

Data Path : Z:\VOASRV\HPCHEM1\MSVOA_U\DATA\VU121718\
 Data File : VU028720.D
 Acq On : 17 Dec 2018 15:06
 Operator : MD/SY
 Sample : J6393-06DL 4X
 Misc : 5.0mL/MSVOA_U/WATER
 ALS Vial : 13 Sample Multiplier: 1

Instrument :
 MSVOA_U
 ClientSampleId :
 MW-10A_R1DL

Quant Time: Dec 18 04:24:14 2018
 Quant Method : Z:\VOASRV\HPCHEM1\MSVOA_U\METHOD\82U120618W.M
 Quant Title : SW846 8260
 QLast Update : Fri Dec 07 00:39:42 2018
 Response via : Initial Calibration

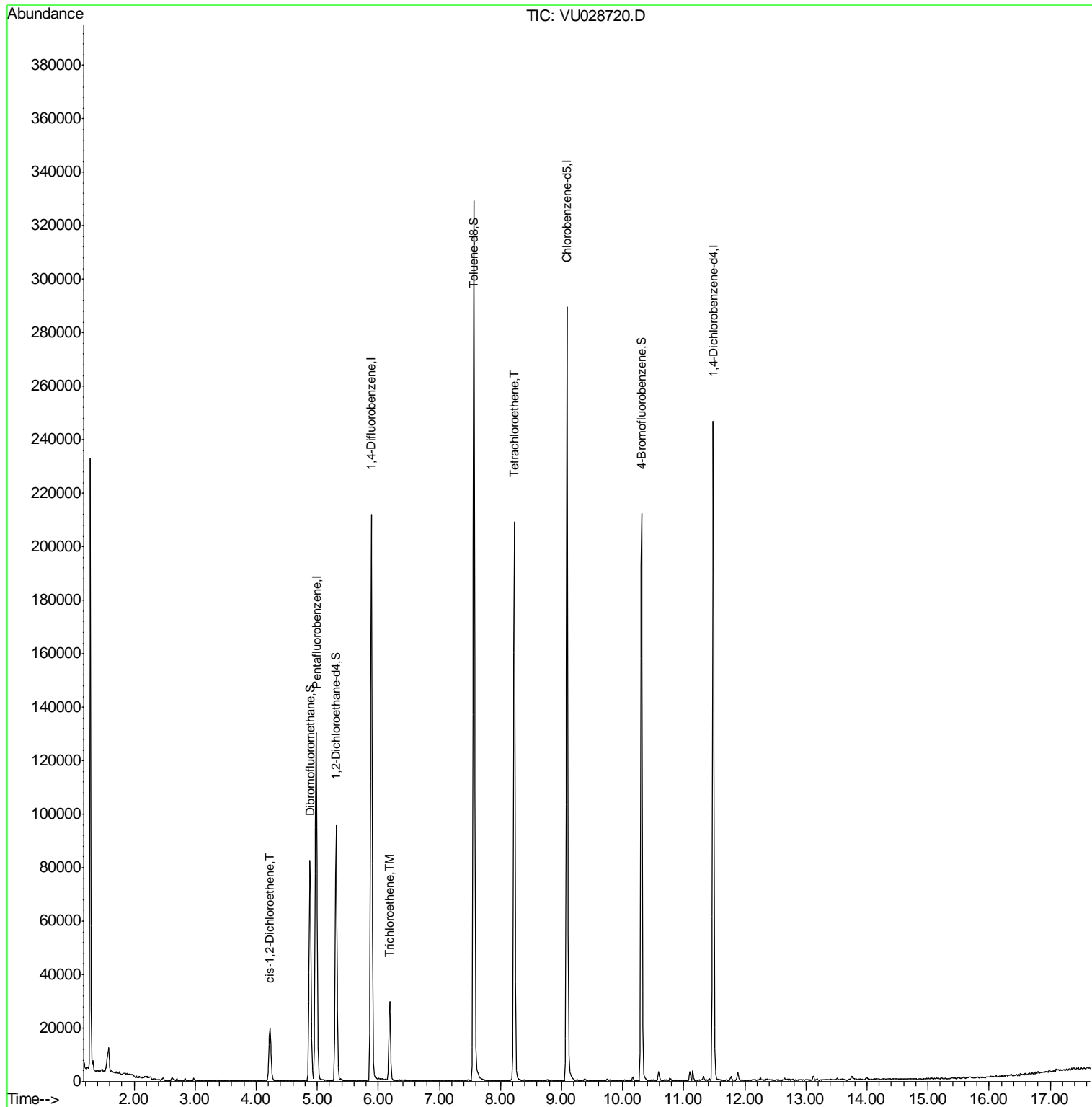
Internal Standards	R.T.	QIon	Response	Conc	Units	Dev(Min)
1) Pentafluorobenzene	4.98	168	98949	50.00	ug/l	0.00
34) 1,4-Difluorobenzene	5.88	114	171511	50.00	ug/l	0.00
63) Chlorobenzene-d5	9.09	117	154900	50.00	ug/l	0.00
72) 1,4-Dichlorobenzene-d4	11.48	152	61512	50.00	ug/l	0.00
System Monitoring Compounds						
33) 1,2-Dichloroethane-d4	5.31	65	72341	47.91	ug/l	0.00
Spiked Amount	50.000		Recovery	=	95.82%	
35) Dibromofluoromethane	4.88	113	57561	53.33	ug/l	0.00
Spiked Amount	50.000		Recovery	=	106.66%	
50) Toluene-d8	7.56	98	221415	51.86	ug/l	0.00
Spiked Amount	50.000		Recovery	=	103.72%	
62) 4-Bromofluorobenzene	10.31	95	73323	45.95	ug/l	0.00
Spiked Amount	50.000		Recovery	=	91.90%	
Target Compounds						
27) cis-1,2-Dichloroethene	4.22	96	11018	7.848	ug/l	90
44) Trichloroethene	6.19	130	10148	8.257	ug/l	96
64) Tetrachloroethene	8.23	164	45895	44.419	ug/l	100

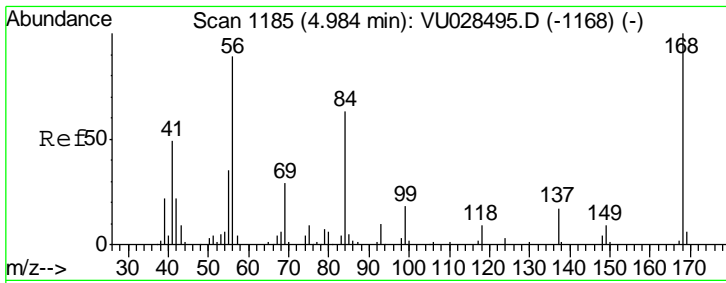
(#) = qualifier out of range (m) = manual integration (+) = signals summed

Data Path : Z:\VOASRV\HPCHEM1\MSVOA_U\DATA\VU121718\
 Data File : VU028720.D
 Acq On : 17 Dec 2018 15:06
 Operator : MD/SY
 Sample : J6393-06DL 4X
 Misc : 5.0mL/MSVOA_U/WATER
 ALS Vial : 13 Sample Multiplier: 1

Instrument :
 MSVOA_U
 ClientSampleID :
 MW-10A_R1DL

Quant Time: Dec 18 04:24:14 2018
 Quant Method : Z:\VOASRV\HPCHEM1\MSVOA_U\METHOD\82U120618W.M
 Quant Title : SW846 8260
 QLast Update : Fri Dec 07 00:39:42 2018
 Response via : Initial Calibration

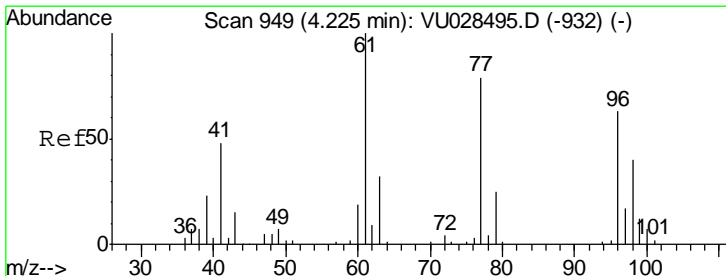
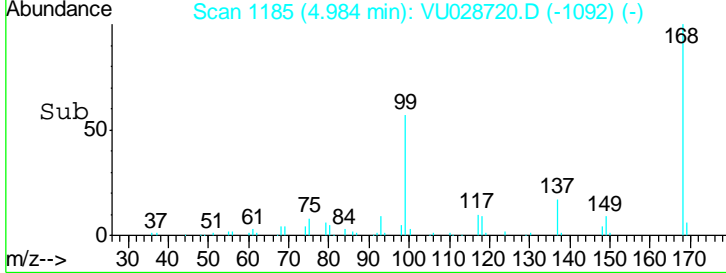
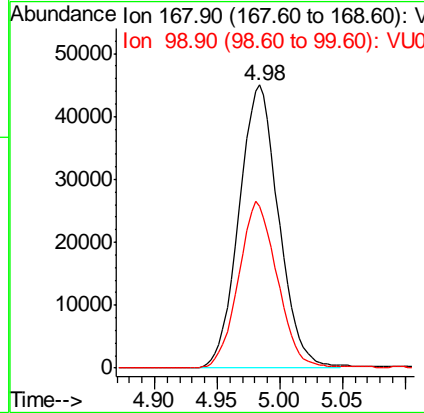
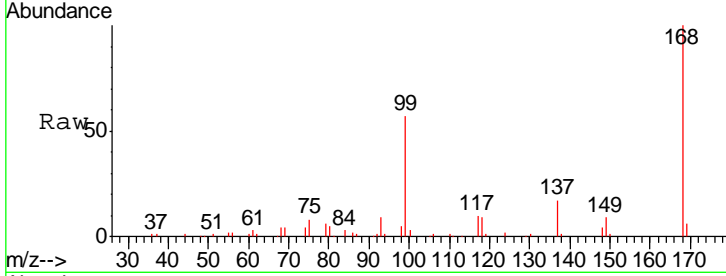




#1
 Pentafluorobenzene
 Concen: 50.000 ug/l
 RT: 4.98 min Scan# 1185
 Delta R.T. -0.00 min
 Lab File: VU028720.D
 Acq: 17 Dec 2018 15:06

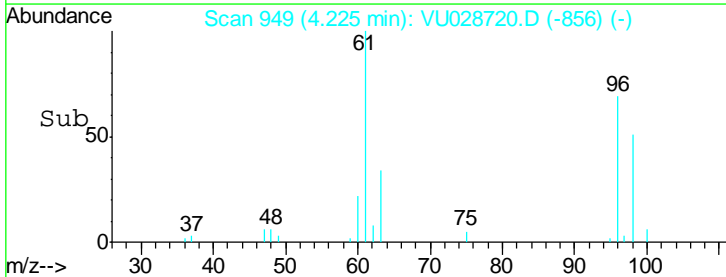
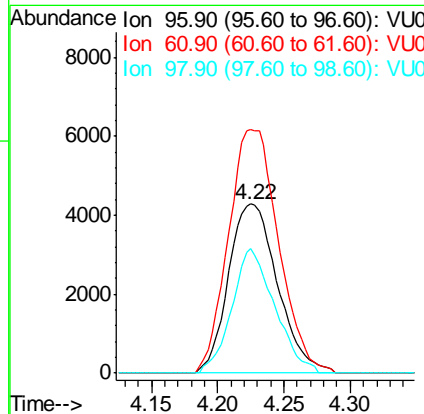
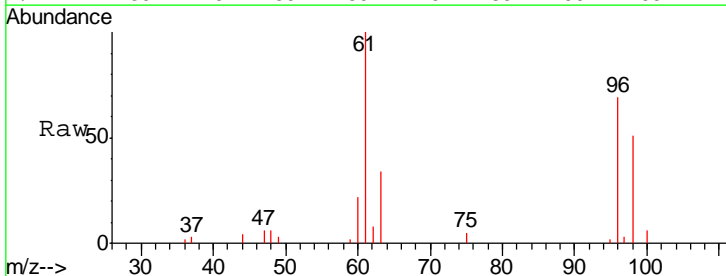
Instrument :
 MSVOA_U
 ClientSampled :
 MW-10A_R1DL

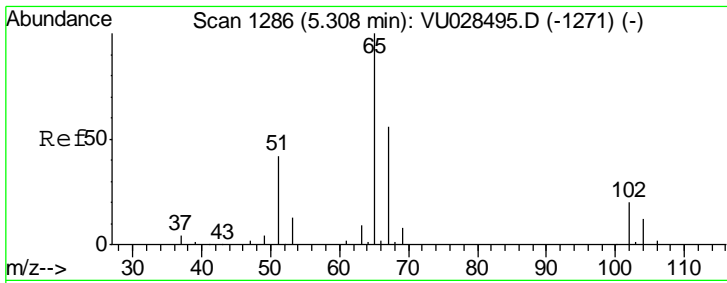
Tgt Ion: 168 Resp: 98949
 Ion Ratio Lower Upper
 168 100
 99 57.1 46.6 69.8



#27
 cis-1,2-Dichloroethene
 Concen: 7.848 ug/l
 RT: 4.22 min Scan# 949
 Delta R.T. -0.00 min
 Lab File: VU028720.D
 Acq: 17 Dec 2018 15:06

Tgt Ion: 96 Resp: 11018
 Ion Ratio Lower Upper
 96 100
 61 147.2 0.0 332.4
 98 64.0 0.0 129.0

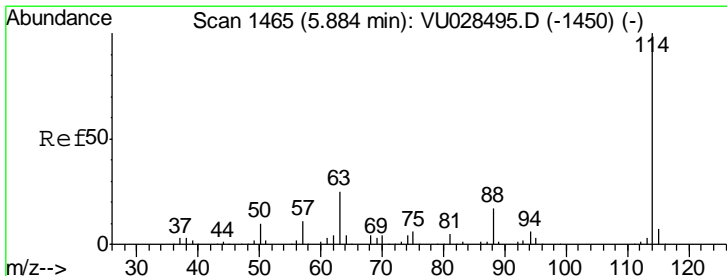
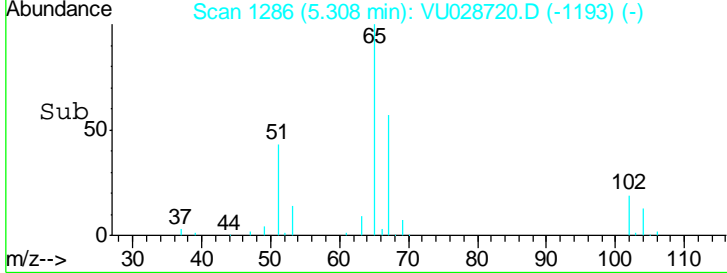
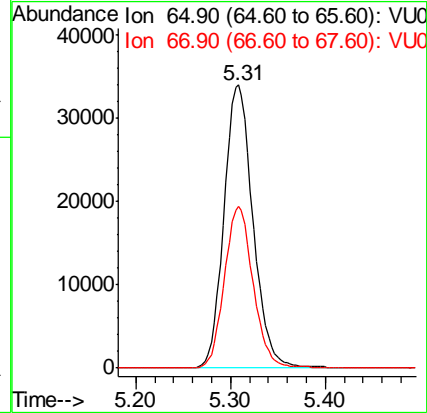
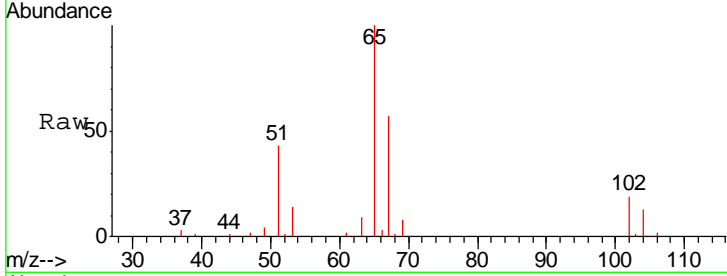




#33
 1,2-Dichloroethane-d4
 Concen: 47.907 ug/l
 RT: 5.31 min Scan# 1286
 Delta R.T. -0.00 min
 Lab File: VU028720.D
 Acq: 17 Dec 2018 15:06

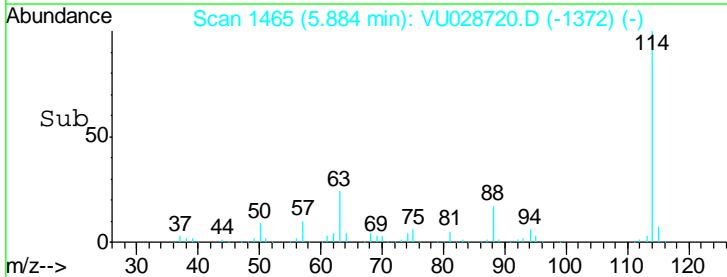
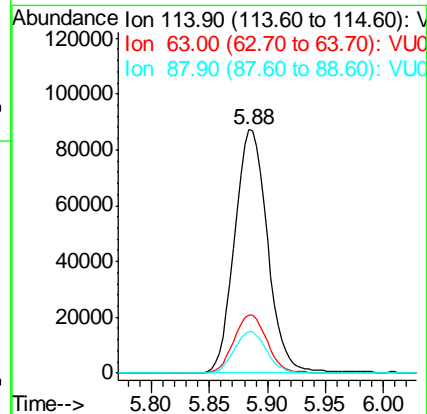
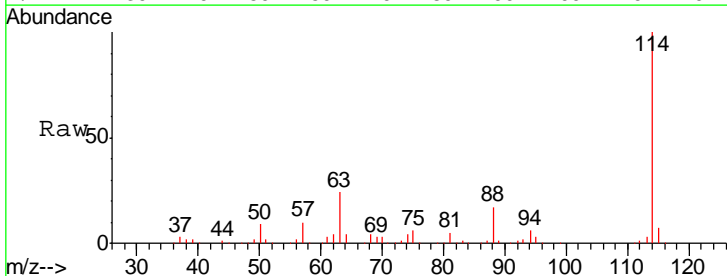
Instrument : MSVOA_U
 ClientSampled : MW-10A_R1DL

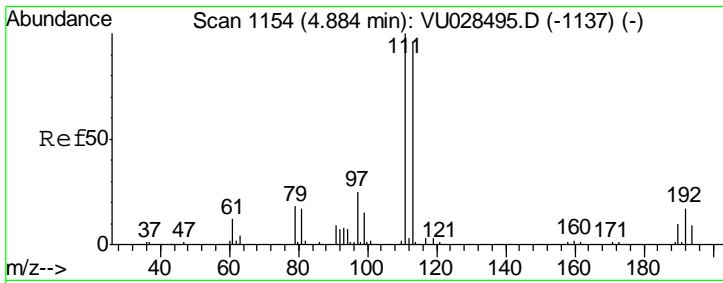
Tgt Ion	Resp	Lower	Upper
65	100		
67	56.3	0.0	110.6



#34
 1,4-Difluorobenzene
 Concen: 50.000 ug/l
 RT: 5.88 min Scan# 1465
 Delta R.T. -0.00 min
 Lab File: VU028720.D
 Acq: 17 Dec 2018 15:06

Tgt Ion	Resp	Lower	Upper
114	100		
63	24.1	0.0	49.2
88	16.8	0.0	33.4

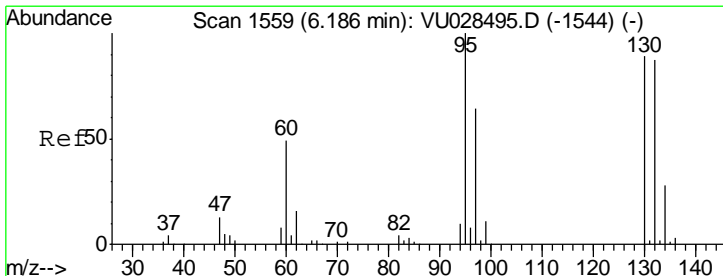
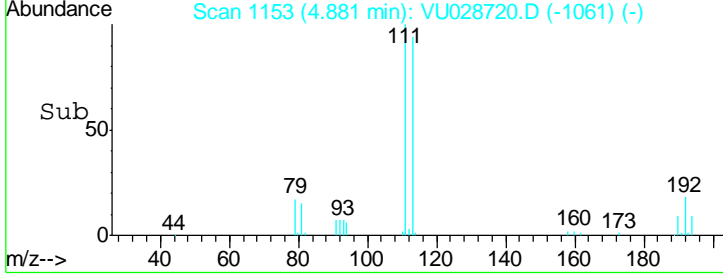
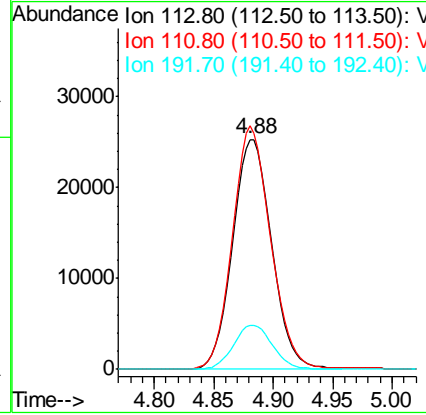
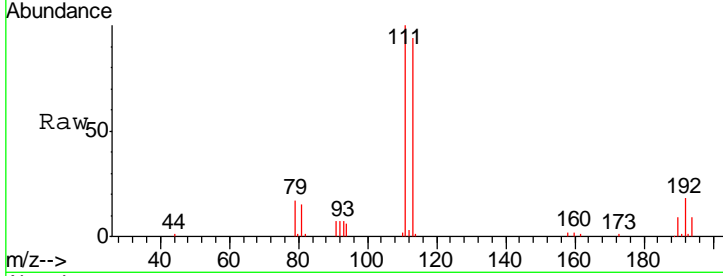




#35
 Dibromofluoromethane
 Concen: 53.330 ug/l
 RT: 4.88 min Scan# 1153
 Delta R.T. -0.00 min
 Lab File: VU028720.D
 Acq: 17 Dec 2018 15:06

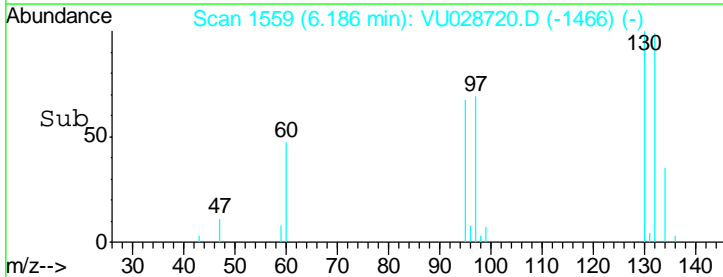
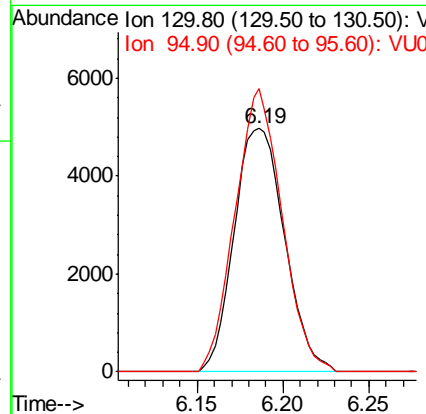
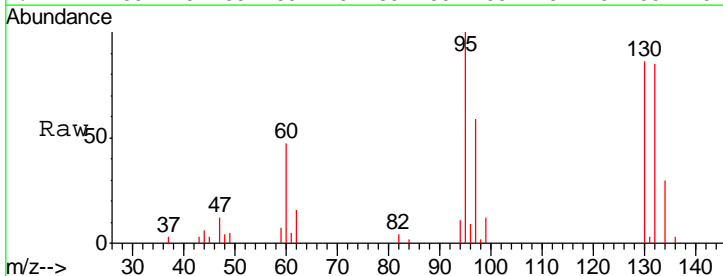
Instrument :
 MSVOA_U
 ClientSampleID :
 MW-10A_R1DL

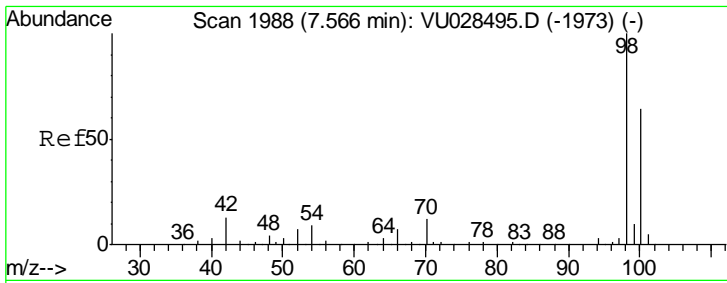
Tgt Ion	Resp	Lower	Upper
113	100		
111	103.3	83.4	125.0
192	19.1	14.8	22.2



#44
 Trichloroethene
 Concen: 8.257 ug/l
 RT: 6.19 min Scan# 1559
 Delta R.T. -0.00 min
 Lab File: VU028720.D
 Acq: 17 Dec 2018 15:06

Tgt Ion	Resp	Lower	Upper
130	100		
95	116.2	0.0	224.0

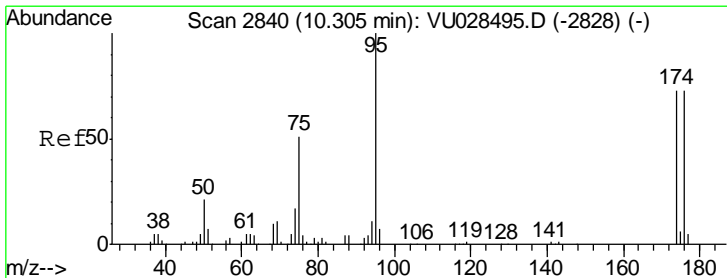
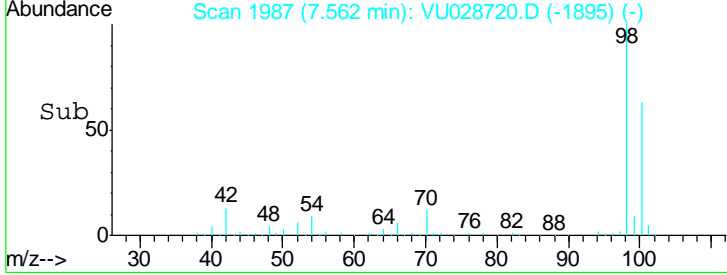
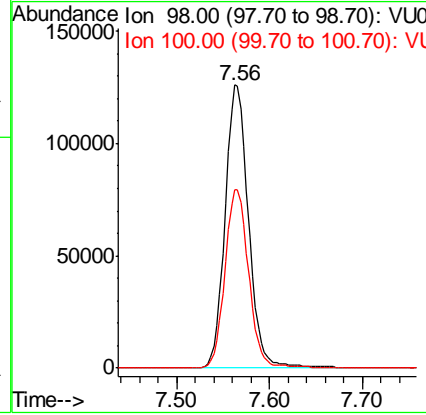
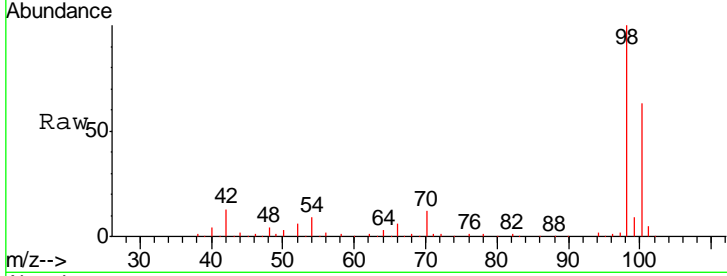




#50
 Toluene-d8
 Concen: 51.858 ug/l
 RT: 7.56 min Scan# 1987
 Delta R.T. -0.00 min
 Lab File: VU028720.D
 Acq: 17 Dec 2018 15:06

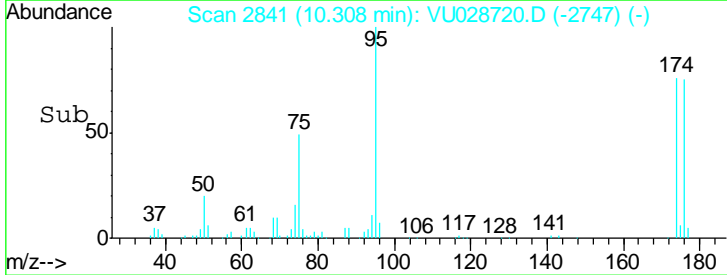
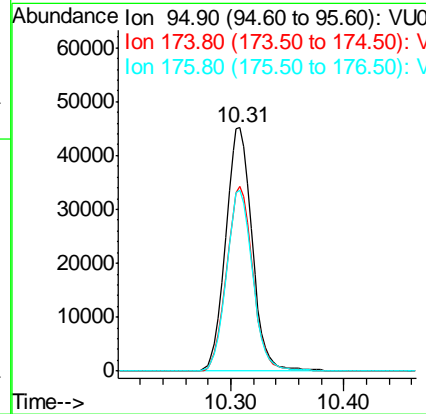
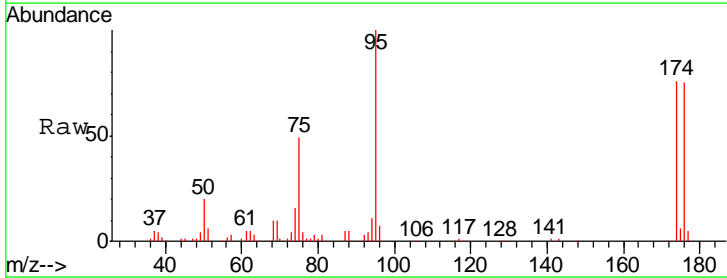
Instrument : MSVOA_U
 ClientSampled : MW-10A_R1DL

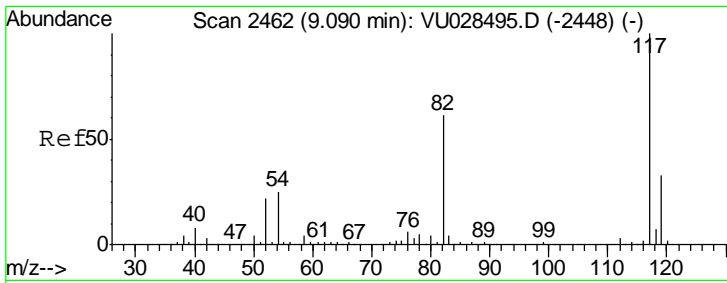
Tgt Ion	Resp	Lower	Upper
98	221415		
98	100		
100	63.8	51.0	76.6



#62
 4-Bromofluorobenzene
 Concen: 45.946 ug/l
 RT: 10.31 min Scan# 2841
 Delta R.T. 0.00 min
 Lab File: VU028720.D
 Acq: 17 Dec 2018 15:06

Tgt Ion	Resp	Lower	Upper
95	73323		
95	100		
174	75.2	0.0	150.4
176	73.7	0.0	145.2

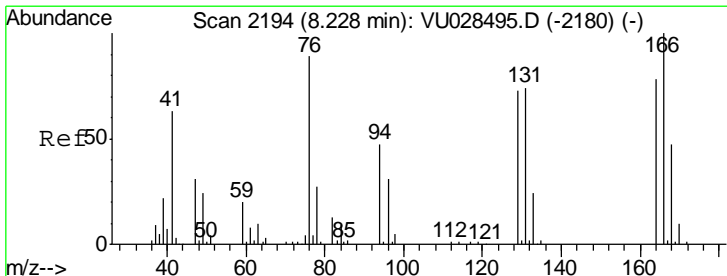
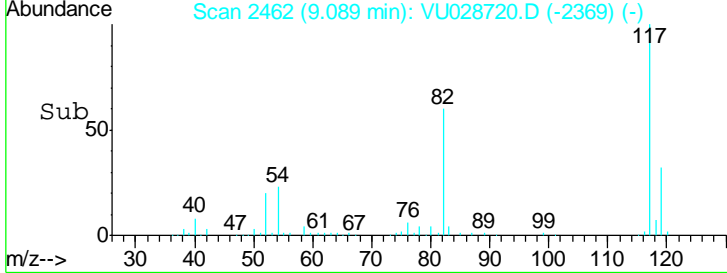
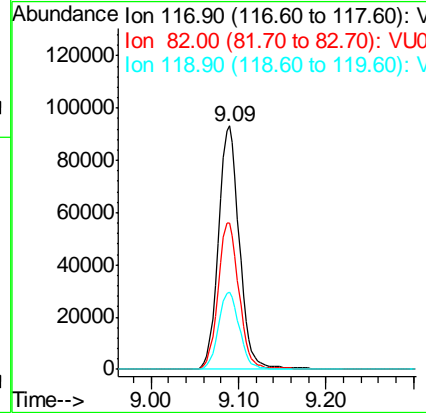
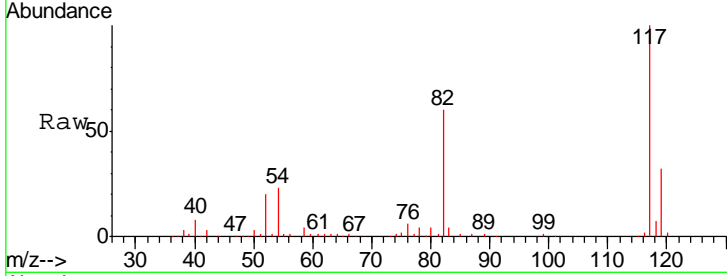




#63
 Chlorobenzene-d5
 Concen: 50.000 ug/l
 RT: 9.09 min Scan# 2462
 Delta R.T. -0.00 min
 Lab File: VU028720.D
 Acq: 17 Dec 2018 15:06

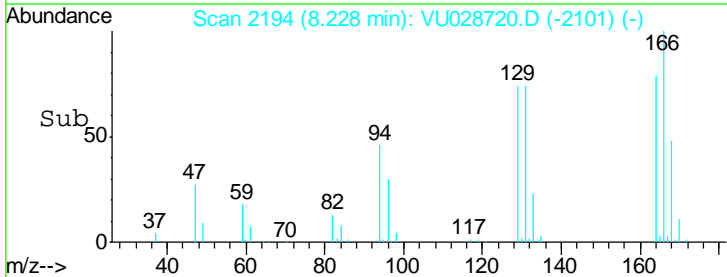
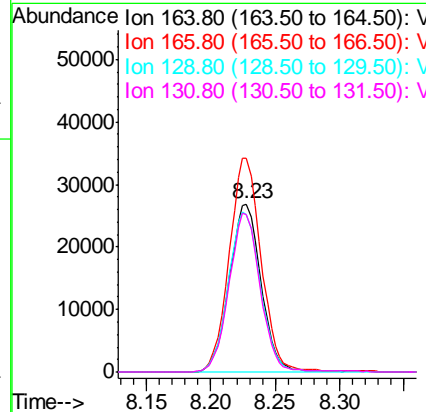
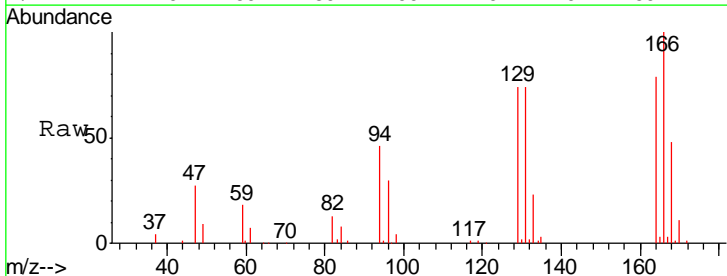
Instrument :
 MSVOA_U
 ClientSampled :
 MW-10A_R1DL

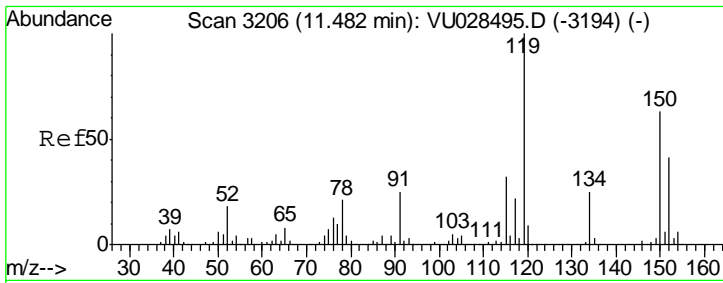
Tgt Ion	Resp	Lower	Upper
117	154900		
82	59.9	48.9	73.3
119	31.9	26.2	39.4



#64
 Tetrachloroethene
 Concen: 44.419 ug/l
 RT: 8.23 min Scan# 2194
 Delta R.T. -0.00 min
 Lab File: VU028720.D
 Acq: 17 Dec 2018 15:06

Tgt Ion	Resp	Lower	Upper
164	45895		
166	127.1	101.9	152.9
129	93.6	74.9	112.3
131	94.0	75.4	113.0





#72
 1,4-Dichlorobenzene-d4
 Concen: 50.000 ug/l
 RT: 11.48 min Scan# 3206
 Delta R.T. -0.00 min
 Lab File: VU028720.D
 Acq: 17 Dec 2018 15:06

Instrument : MSVOA_U
 ClientSampleID : MW-10A_R1DL

Tgt Ion:152 Resp: 61512

Ion	Ratio	Lower	Upper
152	100		
115	58.6	42.7	128.1
150	155.8	0.0	346.0

