

Data Path : Z:\voasrv\HPCHEM1\MSVOA_U\Data\VU121724\
 Data File : VU062387.D
 Acq On : 17 Dec 2024 14:49
 Operator : MD/SY
 Sample : P5310-03
 Misc : 25mL/MSVOA_U/WATER
 ALS Vial : 14 Sample Multiplier: 1

Instrument :
 MSVOA_U
 ClientSampleId :
 C0CL9

Quant Time: Dec 18 00:15:16 2024
 Quant Method : Z:\voasrv\HPCHEM1\MSVOA_U\Method\SFAMUTR120924WMA.M
 Quant Title : TRACE VOA SFAM1.0
 QLast Update : Wed Dec 18 00:11:18 2024
 Response via : Initial Calibration

Compound	R.T.	QIon	Response	Conc	Units	Dev(Min)

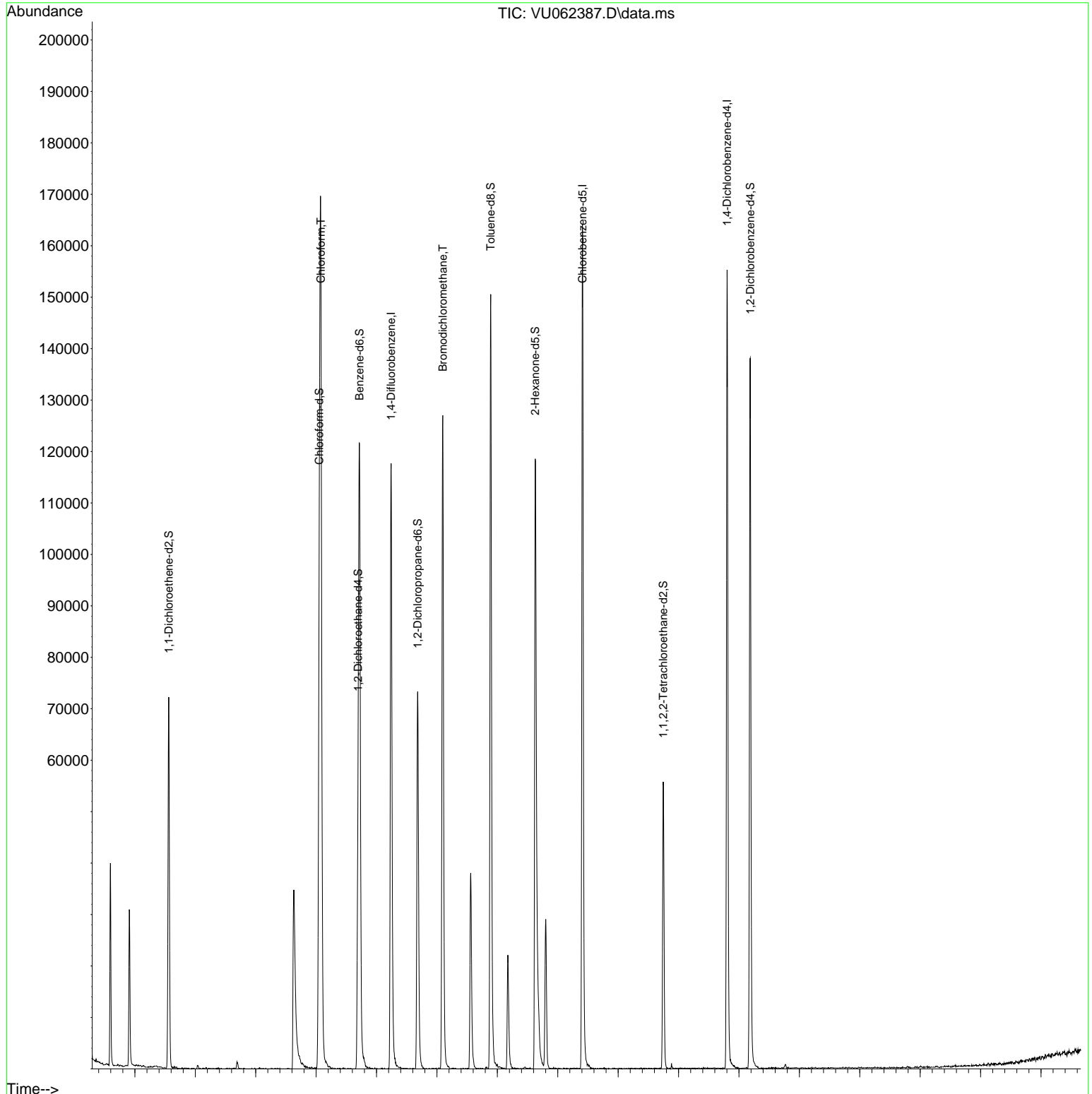
Internal Standards						
1) 1,4-Difluorobenzene	6.242	114	100663	5.000	ug/L	0.00
28) Chlorobenzene-d5	9.409	117	96120	5.000	ug/L	0.00
58) 1,4-Dichlorobenzene-d4	11.804	152	44481	5.000	ug/L	0.00
System Monitoring Compounds						
4) Vinyl Chloride-d3	1.596	65	27082	3.989	ug/L	0.00
Spiked Amount	5.000	Range 40 - 130	Recovery	=	79.800%	
7) Chloroethane-d5	1.907	69	21830	4.520	ug/L	0.00
Spiked Amount	5.000	Range 65 - 130	Recovery	=	90.400%	
11) 1,1-Dichloroethene-d2	2.560	65	13702	4.242	ug/L	0.00
Spiked Amount	5.000	Range 60 - 125	Recovery	=	84.800%	
20) 2-Butanone-d5	4.631	46	56677	43.556	ug/L	0.00
Spiked Amount	50.000	Range 40 - 130	Recovery	=	87.120%	
24) Chloroform-d	5.052	84	71547	4.869	ug/L	0.00
Spiked Amount	5.000	Range 70 - 125	Recovery	=	97.400%	
26) 1,2-Dichloroethane-d4	5.695	65	34484	4.772	ug/L	0.00
Spiked Amount	5.000	Range 70 - 130	Recovery	=	95.400%	
32) Benzene-d6	5.718	84	119454	4.315	ug/L	0.00
Spiked Amount	5.000	Range 70 - 125	Recovery	=	86.200%	
36) 1,2-Dichloropropane-d6	6.682	67	34337	4.335	ug/L	0.00
Spiked Amount	5.000	Range 60 - 140	Recovery	=	86.600%	
41) Toluene-d8	7.891	98	107352	4.105	ug/L	0.00
Spiked Amount	5.000	Range 70 - 130	Recovery	=	82.000%	
43) trans-1,3-Dichloroprop...	8.174	79	14339	4.113	ug/L	0.00
Spiked Amount	5.000	Range 55 - 130	Recovery	=	82.200%	
46) 2-Hexanone-d5	8.627	63	43186	41.056	ug/L	0.00
Spiked Amount	50.000	Range 45 - 130	Recovery	=	82.120%	
56) 1,1,2,2-Tetrachloroeth...	10.746	84	27235	4.419	ug/L	0.00
Spiked Amount	5.000	Range 65 - 120	Recovery	=	88.400%	
66) 1,2-Dichlorobenzene-d4	12.187	152	39421	4.809	ug/L	0.00
Spiked Amount	5.000	Range 80 - 120	Recovery	=	96.200%	
Target Compounds						
25) Chloroform	5.078	83	137492	9.536	ug/L	100
38) Bromodichloromethane	7.097	83	87328	8.533	ug/L	100
49) Dibromochloromethane	8.801	129	16047	2.425	ug/L	99

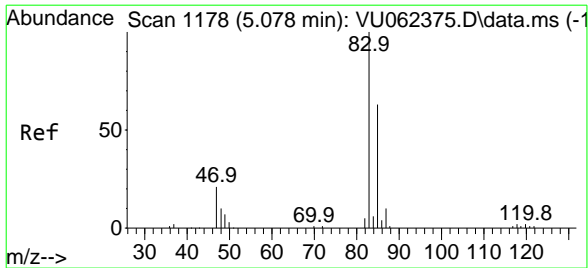
(#) = qualifier out of range (m) = manual integration (+) = signals summed

Data Path : Z:\voasrv\HPCHEM1\MSVOA_U\Data\VU121724\
 Data File : VU062387.D
 Acq On : 17 Dec 2024 14:49
 Operator : MD/SY
 Sample : P5310-03
 Misc : 25mL/MSVOA_U/WATER
 ALS Vial : 14 Sample Multiplier: 1

Instrument :
 MSVOA_U
 ClientSampleId :
 COCL9

Quant Time: Dec 18 00:15:16 2024
 Quant Method : Z:\voasrv\HPCHEM1\MSVOA_U\Method\SFAMUTR120924WMA.M
 Quant Title : TRACE VOA SFAM1.0
 QLast Update : Wed Dec 18 00:11:18 2024
 Response via : Initial Calibration

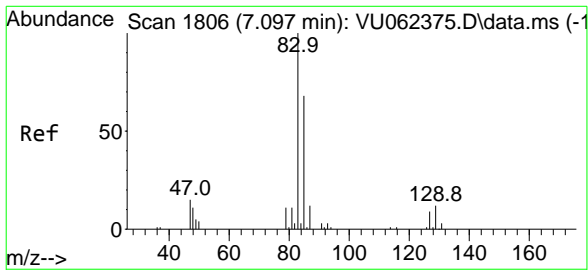
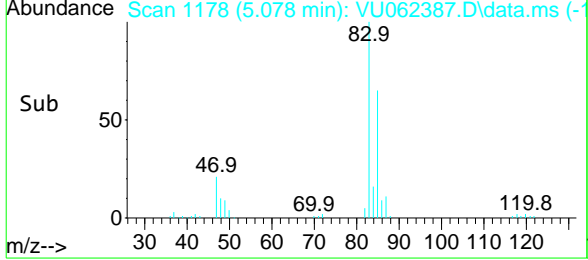
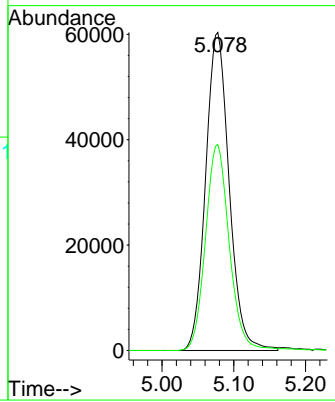
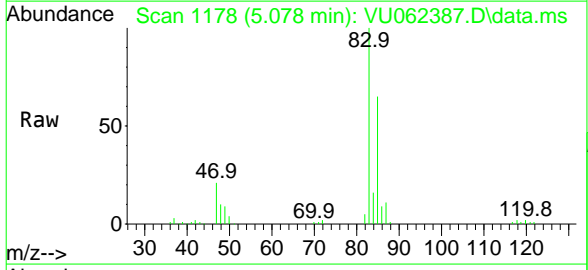




#25
 Chloroform
 Concen: 9.536 ug/L
 RT: 5.078 min Scan# 1178
 Delta R.T. 0.000 min
 Lab File: VU062387.D
 Acq: 17 Dec 2024 14:49

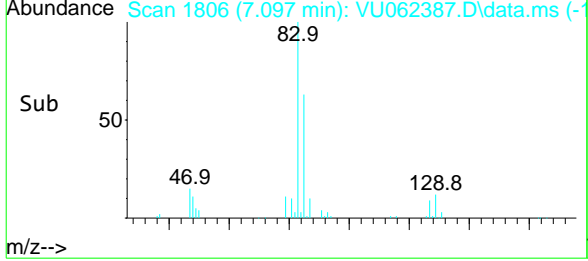
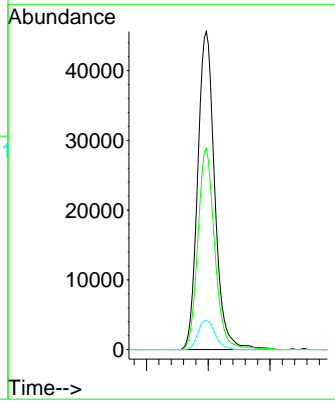
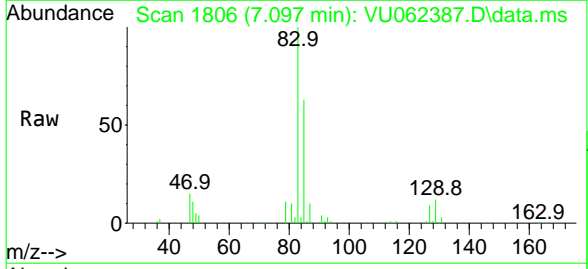
Instrument : MSVOA_U
 ClientSampleId : COCL9

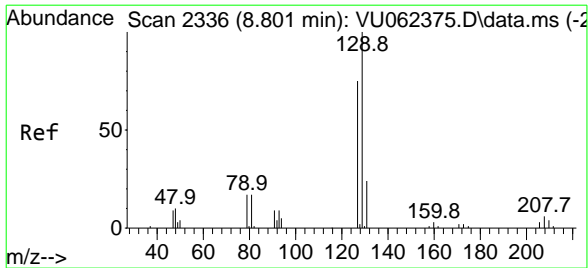
Tgt Ion	Resp	Lower	Upper
83	137492		
85	64.8	45.4	84.2



#38
 Bromodichloromethane
 Concen: 8.533 ug/L
 RT: 7.097 min Scan# 1806
 Delta R.T. 0.000 min
 Lab File: VU062387.D
 Acq: 17 Dec 2024 14:49

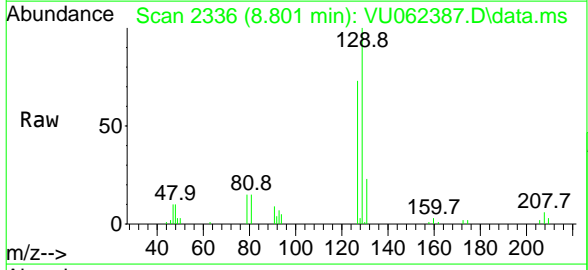
Tgt Ion	Resp	Lower	Upper
83	87328		
85	63.2	44.1	81.9
127	9.1	6.9	10.3





#49
 Dibromochloromethane
 Concen: 2.425 ug/L
 RT: 8.801 min Scan# 23
 Delta R.T. 0.000 min
 Lab File: VU062387.D
 Acq: 17 Dec 2024 14:49

Instrument : MSVOA_U
 ClientSampleId : COCL9



Tgt Ion:129 Resp: 16047

Ion	Ratio	Lower	Upper
129	100		
127	72.6	51.1	94.9

