

Data Path : Z:\VOASRV\HPCHEM1\MSVOA U\DATA\VU121820\
 Data File : VU041677.D
 Acq On : 18 Dec 2020 14:14
 Operator : SY/MD
 Sample : L5142-01
 Misc : 25.0mL/MSVOA U/WATER
 ALS Vial : 13 Sample Multiplier: 1

Instrument :
 MSVOA_U
 ClientSampleId :
 ETZA9

Quant Time: Dec 19 04:14:32 2020
 Quant Method : Z:\VOASRV\HPCHEM1\MSVOA_U\METHOD\SOMUTR121220WMA.M
 Quant Title : TRACE VOA SOM01.0
 QLast Update : Sat Dec 19 04:12:21 2020
 Response via : Initial Calibration

Internal Standards	R.T.	QIon	Response	Conc	Units	Dev(Min)
1) 1,4-Difluorobenzene	6.26	114	112635	5.00	ug/L	0.00
28) Chlorobenzene-d5	9.42	117	102835	5.00	ug/L	0.00
60) 1,4-Dichlorobenzene-d4	11.81	152	46868	5.00	ug/L	0.00

System Monitoring Compounds

4) Vinyl Chloride-d3	1.60	65	33229	3.77	ug/L	0.00
Spiked Amount	5.000	Range	40 - 130	Recovery	=	75.40%
7) Chloroethane-d5	1.92	69	31961	4.69	ug/L	0.00
Spiked Amount	5.000	Range	65 - 130	Recovery	=	93.80%
11) 1,1-Dichloroethene-d2	2.58	63	51517	3.18	ug/L	0.00
Spiked Amount	5.000	Range	60 - 125	Recovery	=	63.60%
20) 2-Butanone-d5	4.66	46	140324	55.48	ug/L	0.00
Spiked Amount	50.000	Range	40 - 130	Recovery	=	110.96%
24) Chloroform-d	5.08	84	70997	4.71	ug/L	0.00
Spiked Amount	5.000	Range	70 - 125	Recovery	=	94.20%
26) 1,2-Dichloroethane-d4	5.72	65	42389	4.95	ug/L	0.00
Spiked Amount	5.000	Range	70 - 130	Recovery	=	99.00%
32) Benzene-d6	5.74	84	140003	4.75	ug/L	0.00
Spiked Amount	5.000	Range	70 - 125	Recovery	=	95.00%
36) 1,2-Dichloropropane-d6	6.70	67	45582	4.94	ug/L	0.00
Spiked Amount	5.000	Range	60 - 140	Recovery	=	98.80%
41) Toluene-d8	7.90	98	124847	4.70	ug/L	0.00
Spiked Amount	5.000	Range	70 - 130	Recovery	=	94.00%
43) trans-1,3-Dichloropropene-	8.19	79	19317	4.65	ug/L	0.00
Spiked Amount	5.000	Range	55 - 130	Recovery	=	93.00%
46) 2-Hexanone-d5	8.64	63	124528	54.87	ug/L	0.00
Spiked Amount	50.000	Range	45 - 130	Recovery	=	109.74%
57) 1,1,2,2-Tetrachloroethane-	10.75	84	46009	5.49	ug/L	0.00
Spiked Amount	5.000	Range	65 - 120	Recovery	=	109.80%
64) 1,2-Dichlorobenzene-d4	12.19	152	44915	5.39	ug/L	0.00
Spiked Amount	5.000	Range	80 - 120	Recovery	=	107.80%

Target Compounds

					Ovalue
3) Chloromethane	1.53	50	1555	0.168	ug/L 96
8) Chloroethane	1.93	64	212	0.030	ug/L # 44
10) 1,1,2-Trichloro-1,2,2-trif	2.58	101	415	0.054	ug/L # 22
12) 1,1-Dichloroethene	2.58	96	438	0.057	ug/L # 1
27) 1,2-Dichloroethane	5.75	62	707	0.070	ug/L # 73
34) Trichloroethene	6.56	95	1455	0.176	ug/L # 89
35) Methylcyclohexane	6.70	83	10948	0.820	ug/L # 19
37) 1,2-Dichloropropane	6.70	63	4845	0.576	ug/L # 88
39) cis-1,3-Dichloropropene	7.57	75	1033	0.083	ug/L 83
44) trans-1,3-Dichloropropene	8.19	75	645	0.058	ug/L # 64
45) 1,1,2-Trichloroethane	8.55	97	597	0.096	ug/L # 37
47) Tetrachloroethene	8.56	164	84108	14.538	ug/L 98
48) 2-Hexanone	8.64	43	14123	3.242	ug/L # 66
49) Dibromochloromethane	8.56	129	81078	11.346	ug/L # 10
59) 1,2,3-Trichloropropane	11.81	75	4719	0.747	ug/L 99

Data Path : Z:\VOASRV\HPCHEM1\MSVOA U\DATA\VU121820\
Data File : VU041677.D
Acq On : 18 Dec 2020 14:14
Operator : SY/MD
Sample : L5142-01
Misc : 25.0mL/MSVOA U/WATER
ALS Vial : 13 Sample Multiplier: 1

Instrument :
MSVOA_U
ClientSampleId :
ETZA9

Quant Time: Dec 19 04:14:32 2020
Quant Method : Z:\VOASRV\HPCHEM1\MSVOA_U\METHOD\SOMUTR121220WMA.M
Quant Title : TRACE VOA SOM01.0
QLast Update : Sat Dec 19 04:12:21 2020
Response via : Initial Calibration

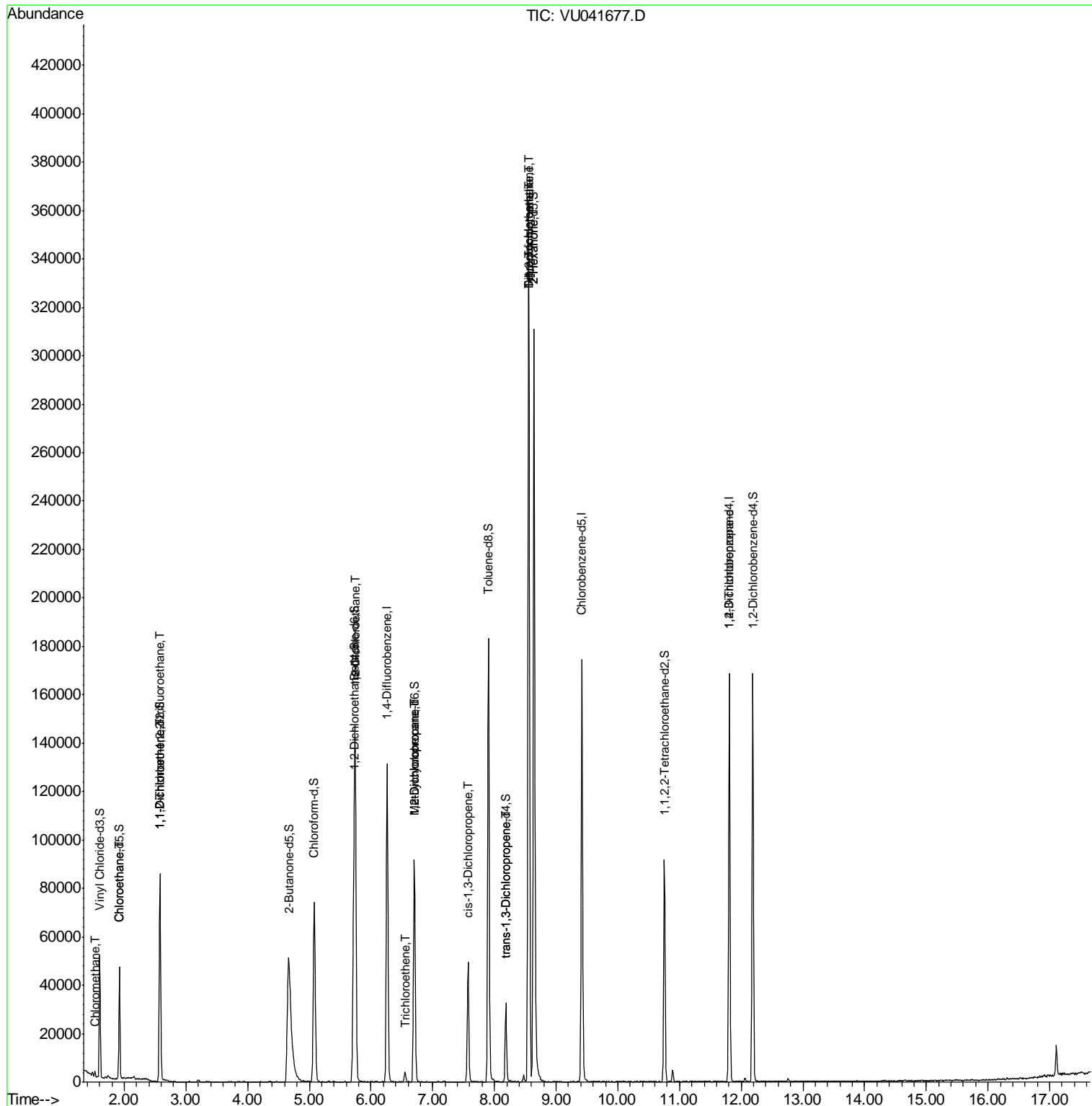
Internal Standards	R.T.	QIon	Response	Conc	Units	Dev(Min)

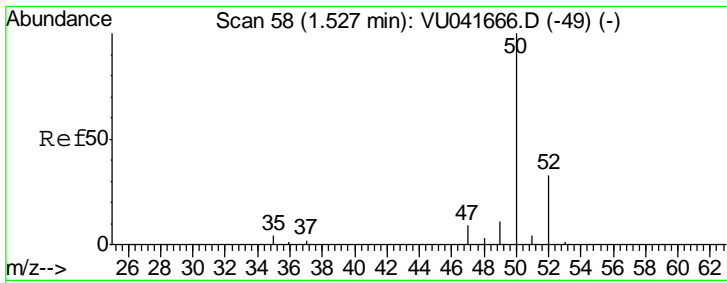
(#) = qualifier out of range (m) = manual integration (+) = signals summed						

Data Path : Z:\VOASRV\HPCHEM1\MSVOA U\DATA\VU121820\
 Data File : VU041677.D
 Acq On : 18 Dec 2020 14:14
 Operator : SY/MD
 Sample : L5142-01
 Misc : 25.0mL/MSVOA U/WATER
 ALS Vial : 13 Sample Multiplier: 1

Instrument :
 MSVOA_U
 Client Sampled :
 ETZA9

Quant Time: Dec 19 04:14:32 2020
 Quant Method : Z:\VOASRV\HPCHEM1\MSVOA_U\METHOD\SOMUTR121220WMA.M
 Quant Title : TRACE VOA SOM01.0
 QLast Update : Sat Dec 19 04:12:21 2020
 Response via : Initial Calibration

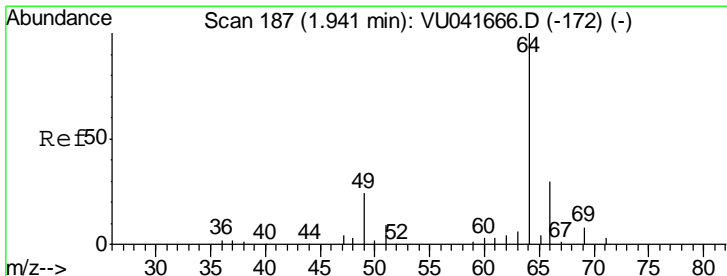
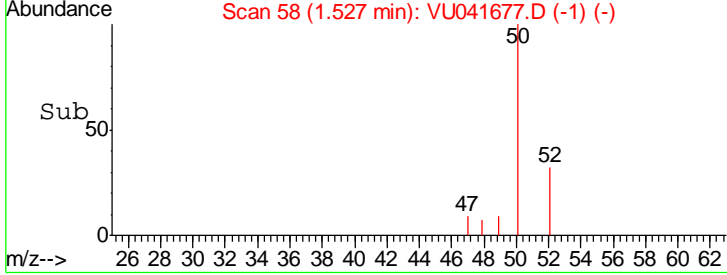
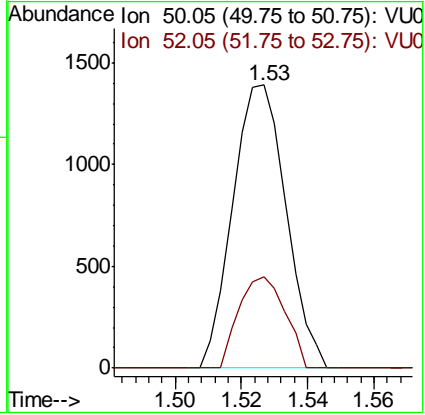
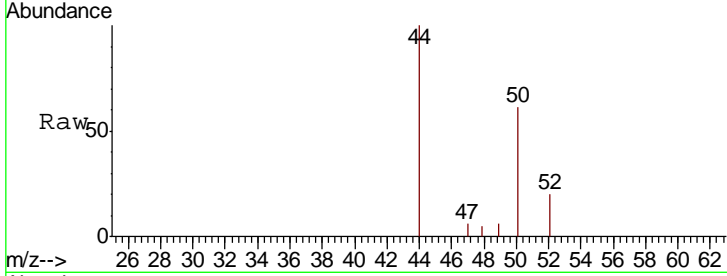




#3
 Chloromethane
 Concen: 0.168 ug/L
 RT: 1.53 min Scan# 58
 Delta R.T. 0.00 min
 Lab File: VU041677.D
 Acq: 18 Dec 2020 14:14

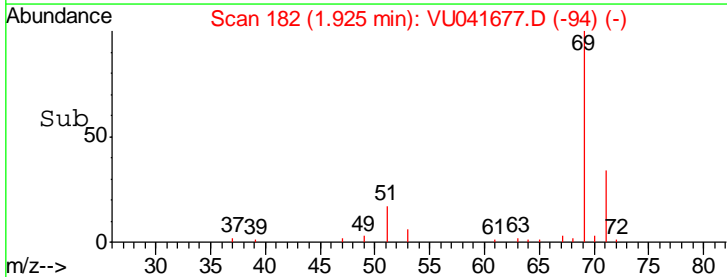
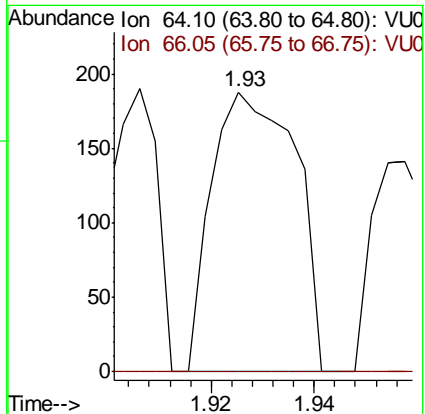
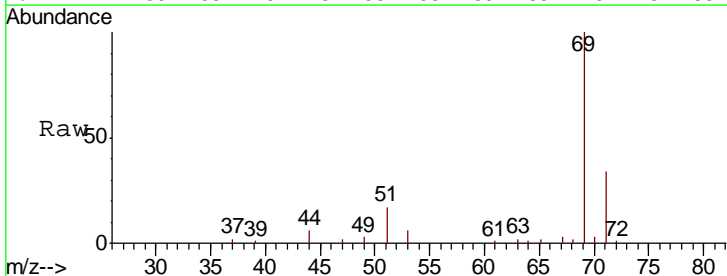
Instrument :
 MSVOA_U
 ClientSampled :
 ETZA9

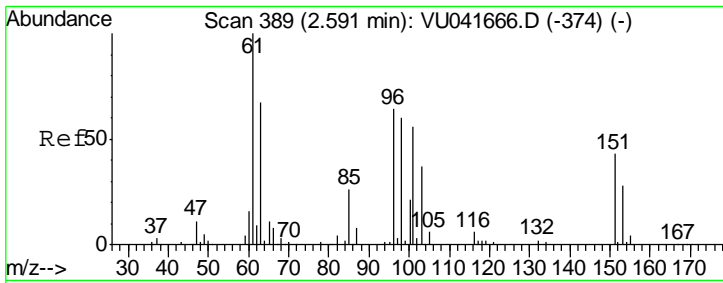
Tgt Ion	Resp	Lower	Upper
50	1555		
52	32.4	24.1	44.8



#8
 Chloroethane
 Concen: 0.030 ug/L
 RT: 1.93 min Scan# 182
 Delta R.T. -0.02 min
 Lab File: VU041677.D
 Acq: 18 Dec 2020 14:14

Tgt Ion	Resp	Lower	Upper
64	212		
66	0.0	21.6	40.0#

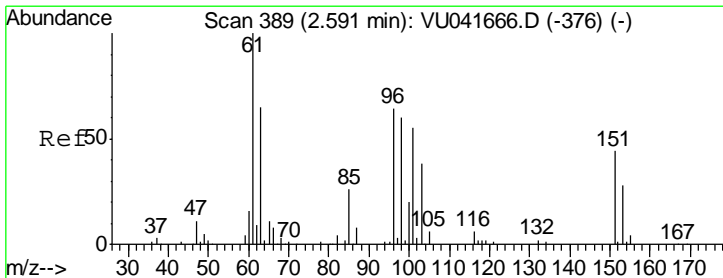
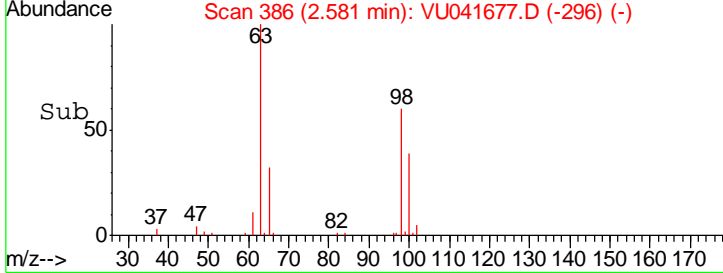
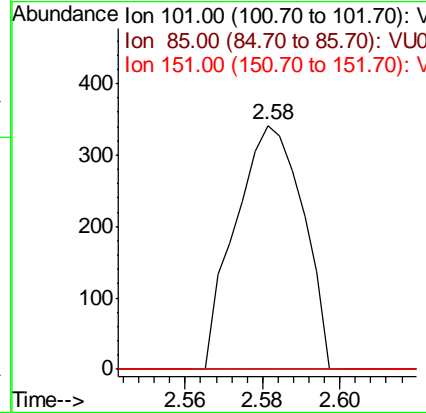
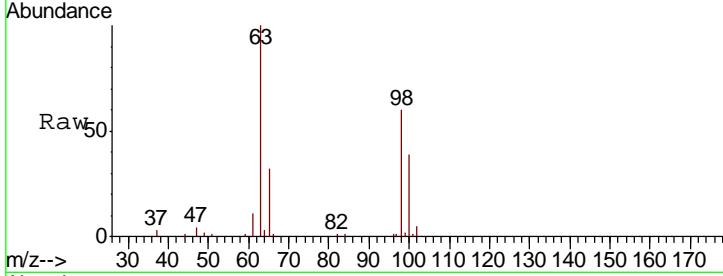




#10
 1,1,2-Trichloro-1,2,2-trifluoroethane
 Concen: 0.054 ug/L
 RT: 2.58 min Scan# 386
 Delta R.T. -0.01 min
 Lab File: VU041677.D
 Acq: 18 Dec 2020 14:14

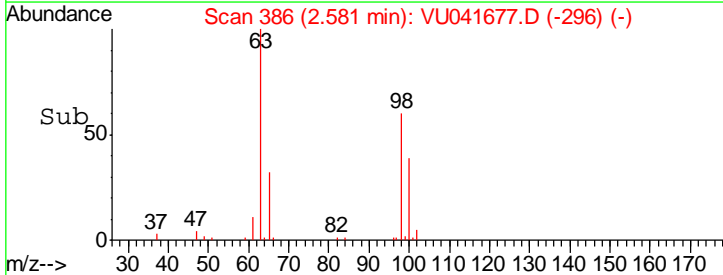
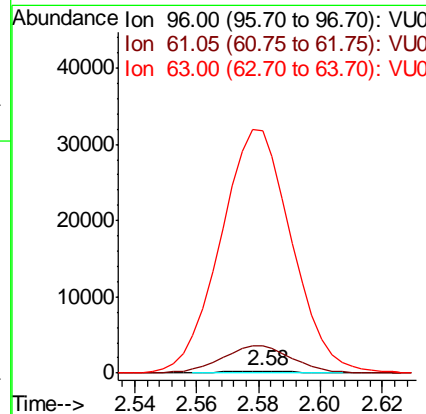
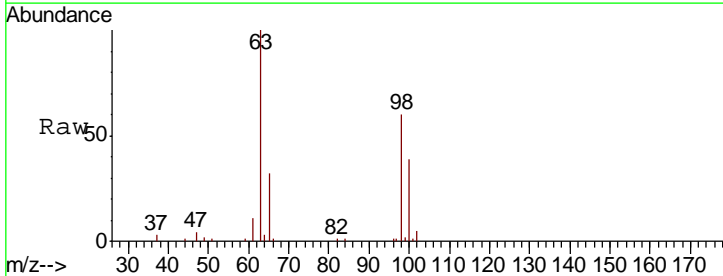
Instrument :
 MSVOA_U
 ClientSampled :
 ETZA9

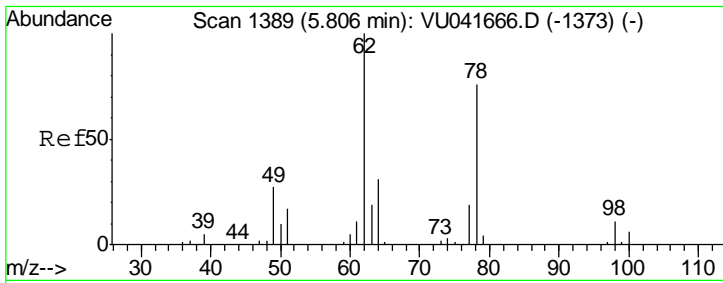
Tgt Ion	Resp	Lower	Upper
101	415		
101	100		
85	0.0	33.6	50.4#
151	0.0	56.2	84.4#



#12
 1,1-Dichloroethene
 Concen: 0.057 ug/L
 RT: 2.58 min Scan# 386
 Delta R.T. -0.01 min
 Lab File: VU041677.D
 Acq: 18 Dec 2020 14:14

Tgt Ion	Resp	Lower	Upper
96	438		
96	100		
61	1289.9	123.8	230.0#
63	11491.7	81.0	150.4#

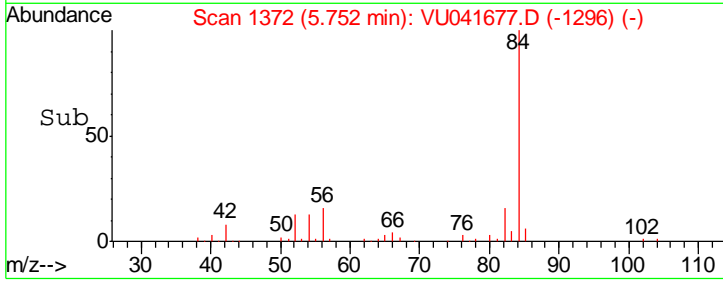
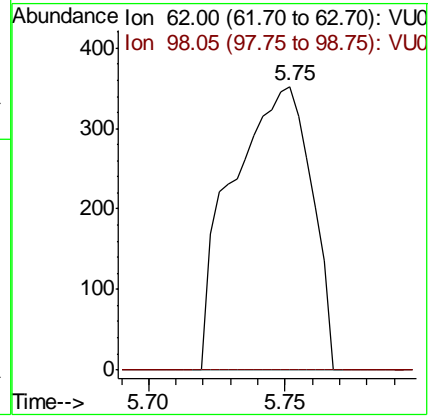
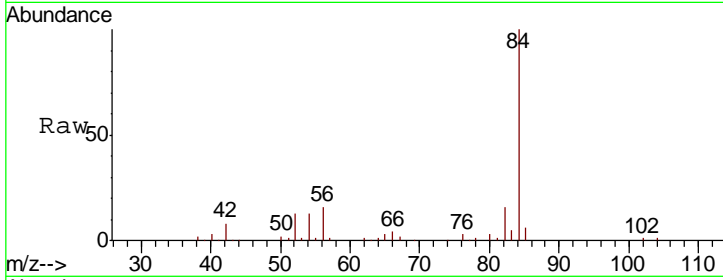




#27
 1,2-Dichloroethane
 Concen: 0.070 ug/L
 RT: 5.75 min Scan# 1372
 Delta R.T. -0.05 min
 Lab File: VU041677.D
 Acq: 18 Dec 2020 14:14

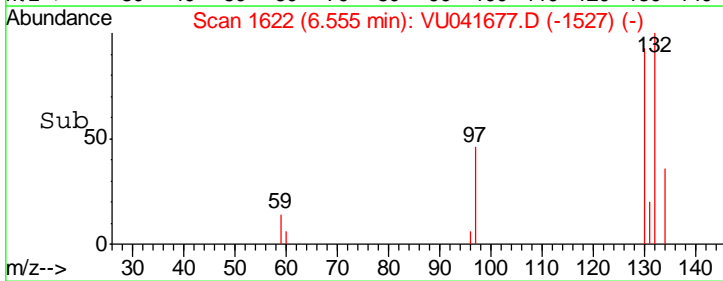
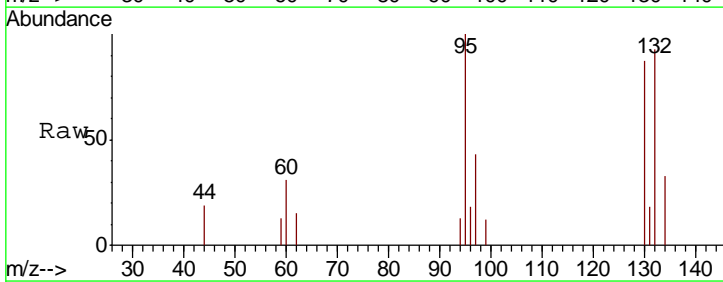
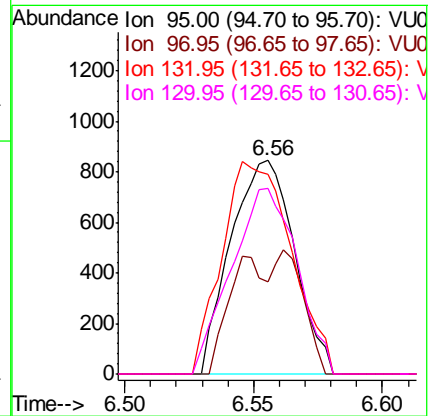
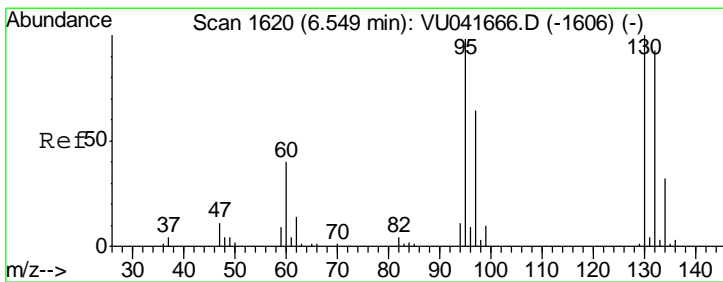
Instrument : MSVOA_U
 ClientSampled : ETZA9

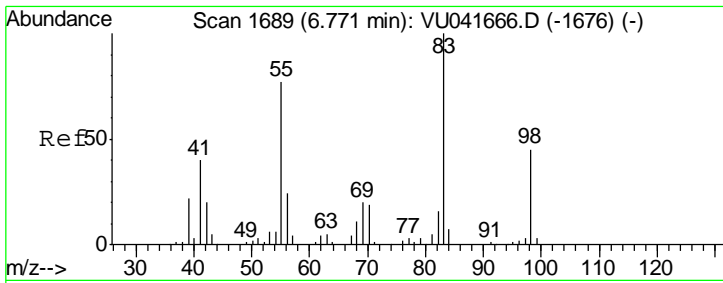
Tgt Ion	Resp	Lower	Upper
62	100		
98	0.0	8.2	12.2#



#34
 Trichloroethene
 Concen: 0.176 ug/L
 RT: 6.56 min Scan# 1622
 Delta R.T. 0.01 min
 Lab File: VU041677.D
 Acq: 18 Dec 2020 14:14

Tgt Ion	Resp	Lower	Upper
95	100		
97	43.1	43.9	81.5#
132	93.4	63.1	117.3
130	86.7	67.4	125.2

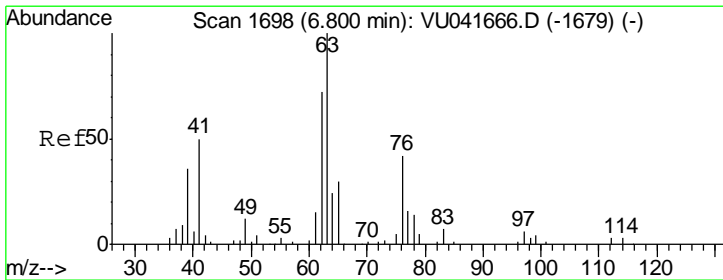
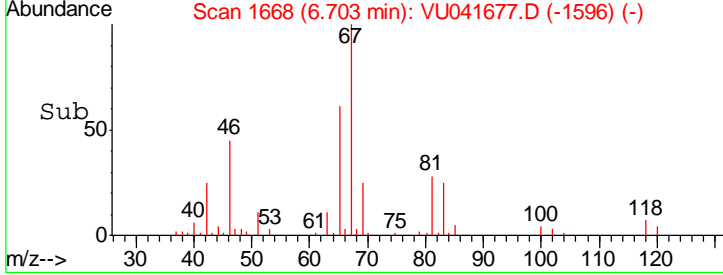
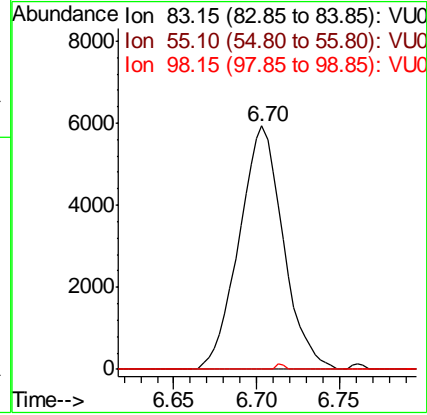
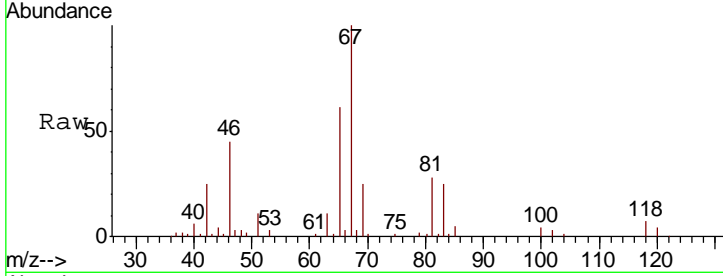




#35
 Methylcyclohexane
 Concen: 0.820 ug/L
 RT: 6.70 min Scan# 1668
 Delta R.T. -0.07 min
 Lab File: VU041677.D
 Acq: 18 Dec 2020 14:14

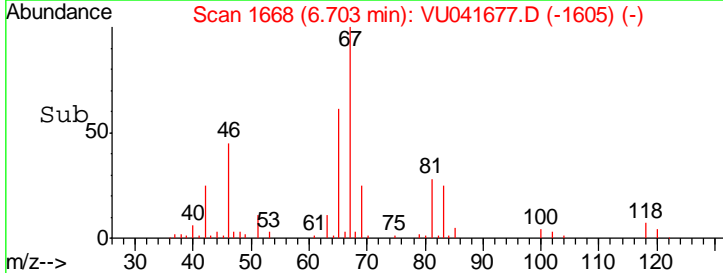
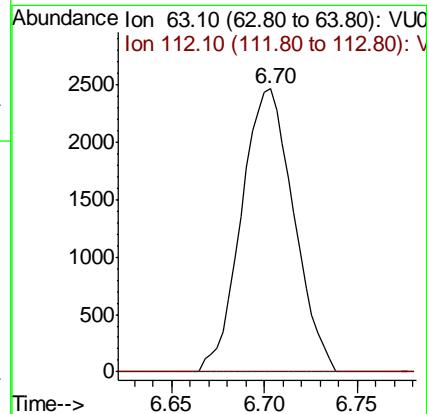
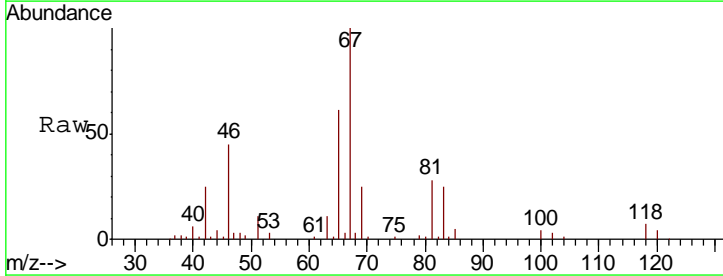
Instrument :
 MSVOA_U
 ClientSampled :
 ETZA9

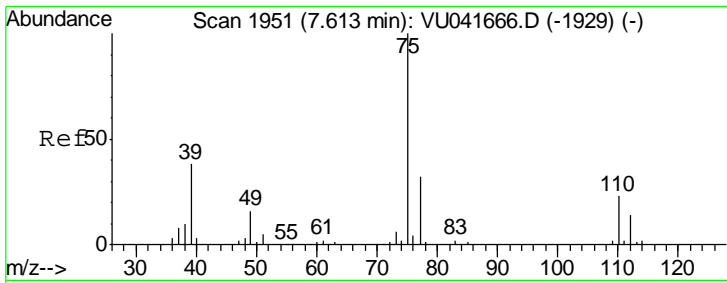
Tgt Ion	Resp	Lower	Upper
83	10948		
55	0.0	61.2	91.8#
98	0.4	36.6	54.8#



#37
 1,2-Dichloropropane
 Concen: 0.576 ug/L
 RT: 6.70 min Scan# 1668
 Delta R.T. -0.10 min
 Lab File: VU041677.D
 Acq: 18 Dec 2020 14:14

Tgt Ion	Resp	Lower	Upper
63	4845		
112	0.0	3.1	4.7#

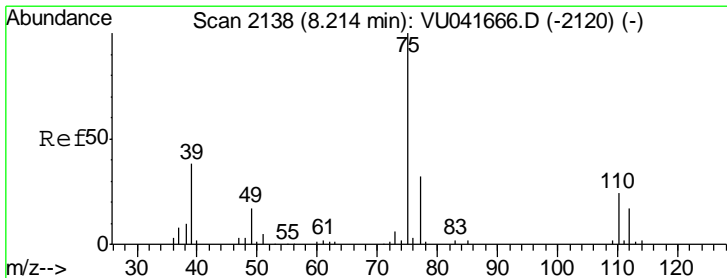
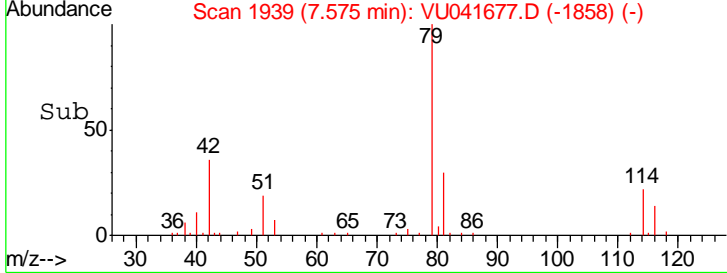
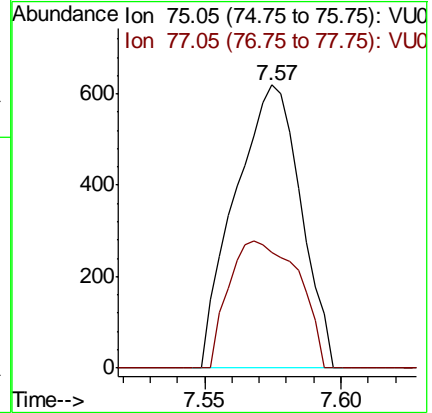
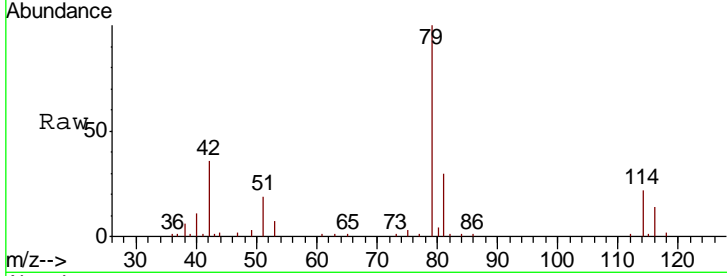




#39
 cis-1,3-Dichloropropene
 Concen: 0.083 ug/L
 RT: 7.57 min Scan# 1939
 Delta R.T. -0.04 min
 Lab File: VU041677.D
 Acq: 18 Dec 2020 14:14

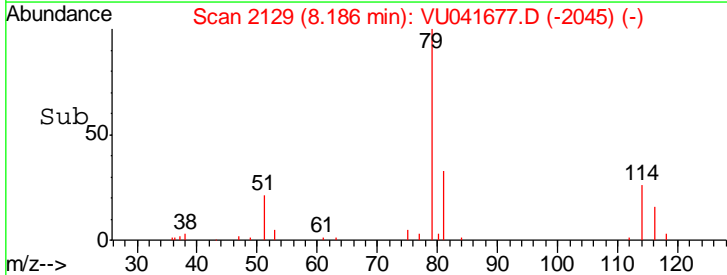
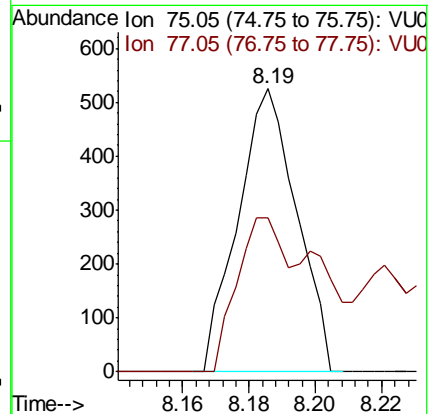
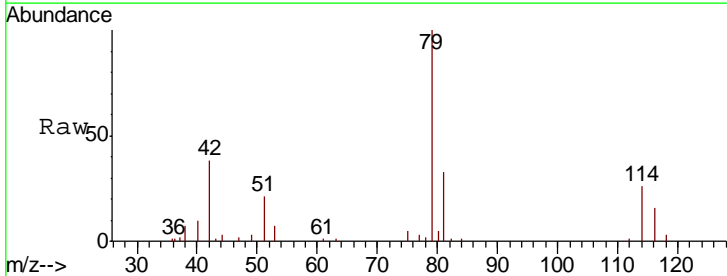
Instrument : MSVOA_U
 ClientSampled : ETZA9

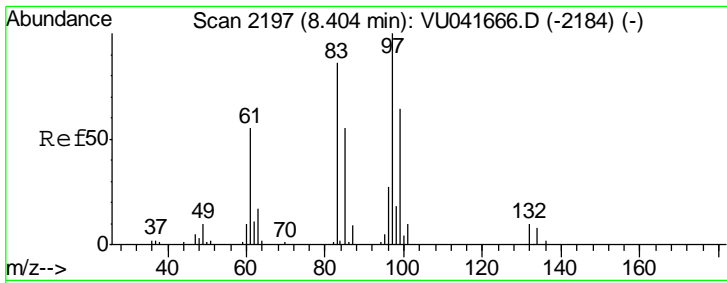
Tgt Ion: 75 Resp: 1033
 Ion Ratio Lower Upper
 75 100
 77 41.0 22.3 41.3



#44
 trans-1,3-Dichloropropene
 Concen: 0.058 ug/L
 RT: 8.19 min Scan# 2129
 Delta R.T. -0.03 min
 Lab File: VU041677.D
 Acq: 18 Dec 2020 14:14

Tgt Ion: 75 Resp: 645
 Ion Ratio Lower Upper
 75 100
 77 54.5 23.8 44.2#

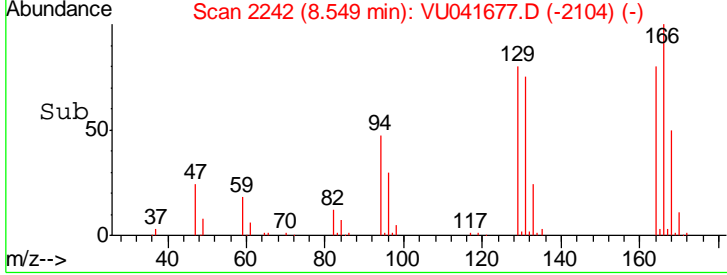
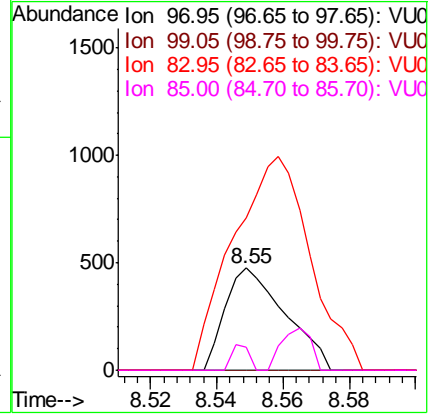
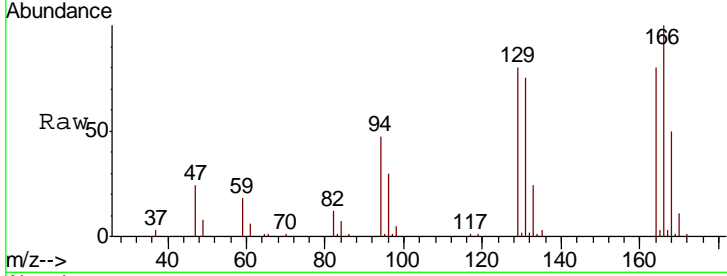




#45
 1,1,2-Trichloroethane
 Concen: 0.096 ug/L
 RT: 8.55 min Scan# 2242
 Delta R.T. 0.14 min
 Lab File: VU041677.D
 Acq: 18 Dec 2020 14:14

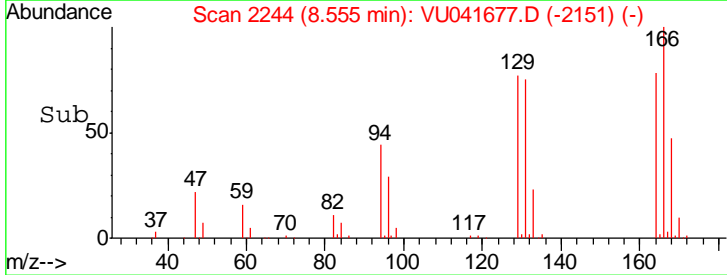
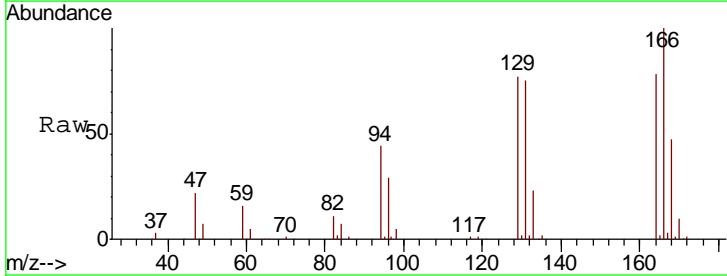
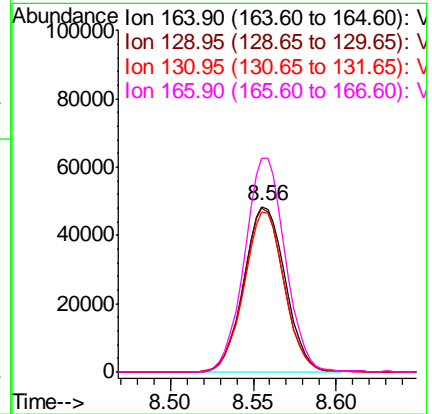
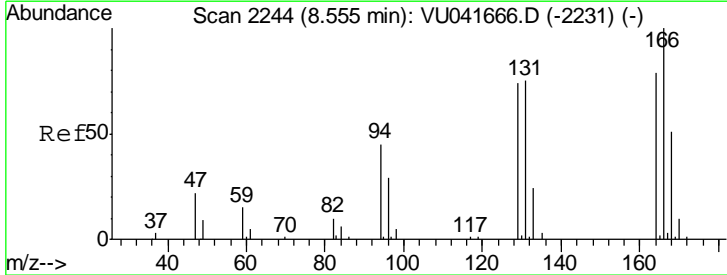
Instrument : MSVOA_U
 ClientSampled : ETZA9

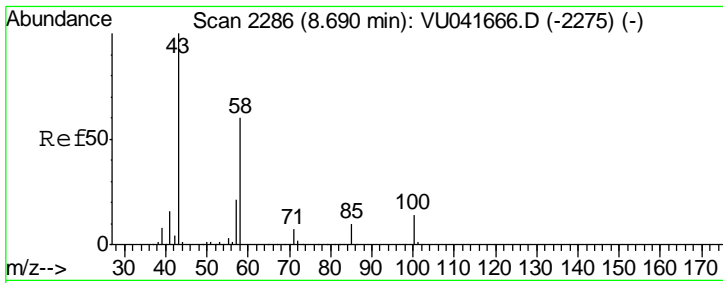
Tgt Ion	Resp	Lower	Upper
97	100		
99	0.0	42.1	78.3#
83	149.2	62.6	116.2#
85	23.1	39.1	72.7#



#47
 Tetrachloroethene
 Concen: 14.538 ug/L
 RT: 8.56 min Scan# 2244
 Delta R.T. 0.00 min
 Lab File: VU041677.D
 Acq: 18 Dec 2020 14:14

Tgt Ion	Resp	Lower	Upper
164	100		
129	99.0	72.2	134.0
131	96.5	66.9	124.3
166	128.8	89.6	166.4

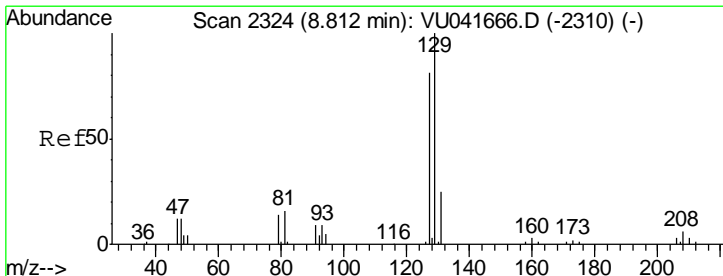
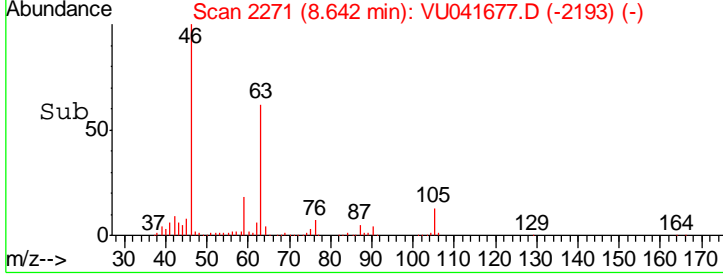
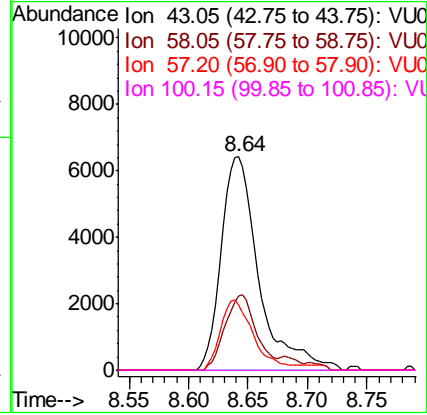
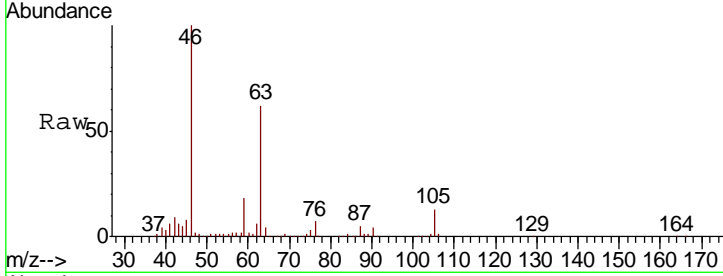




#48
 2-Hexanone
 Concen: 3.242 ug/L
 RT: 8.64 min Scan# 2271
 Delta R.T. -0.05 min
 Lab File: VU041677.D
 Acq: 18 Dec 2020 14:14

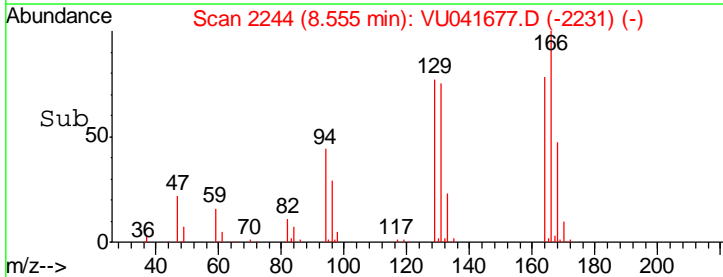
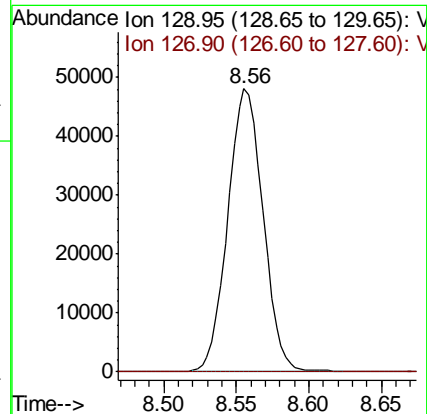
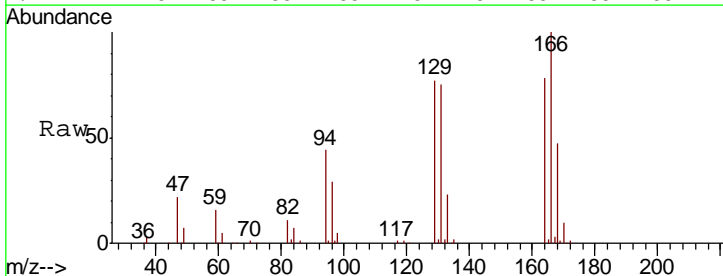
Instrument : MSVOA_U
 ClientSampled : ETZA9

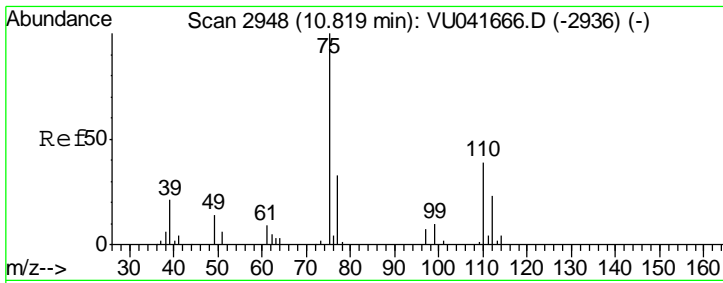
Tgt Ion	Resp	Lower	Upper
43	14123		
58	29.5	47.9	71.9#
57	29.2	16.5	24.7#
100	0.0	9.4	14.2#



#49
 Dibromochloromethane
 Concen: 11.346 ug/L
 RT: 8.56 min Scan# 2244
 Delta R.T. -0.26 min
 Lab File: VU041677.D
 Acq: 18 Dec 2020 14:14

Tgt Ion	Resp	Lower	Upper
129	81078		
127	0.0	54.7	101.7#

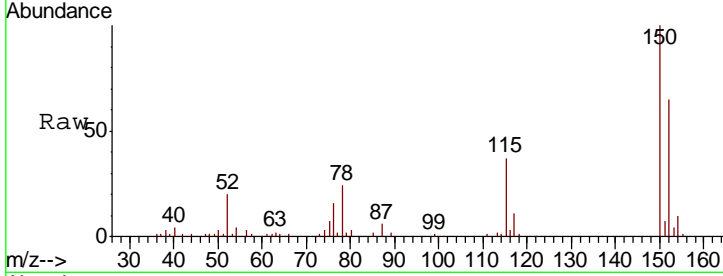




#59
 1,2,3-Trichloropropane
 Concen: 0.747 ug/L
 RT: 11.81 min Scan# 3255
 Delta R.T. 0.99 min
 Lab File: VU041677.D
 Acq: 18 Dec 2020 14:14

Instrument :
 MSVOA_U
 ClientSampled :
 ETZA9

Tot Ion: 75 Resp: 4719
 Ion Ratio Lower Upper
 75 100
 77 32.1 26.2 39.2



Abundance Ion 75.00 (74.70 to 75.70): VU0
 Ion 77.00 (76.70 to 77.70): VU0

