

Data Path : Z:\VOASRV\HPCHEM1\MSVOA U\DATA\VU121919\  
 Data File : VU036290.D  
 Acq On : 19 Dec 2019 18:10  
 Operator : JC/MD  
 Sample : K6282-09  
 Misc : 25.0mL/MSVOA U/WATER  
 ALS Vial : 14 Sample Multiplier: 1

Instrument :  
 MSVOA\_U  
 ClientSampleID :  
 BFDW5

Quant Time: Dec 20 04:27:29 2019  
 Quant Method : Z:\VOASRV\HPCHEM1\MSVOA\_U\METHOD\SOMUTR121319WMA.M  
 Quant Title : TRACE VOA SOM01.0  
 QLast Update : Fri Dec 20 03:13:48 2019  
 Response via : Initial Calibration

Internal Standards	R.T.	QIon	Response	Conc	Units	Dev(Min)
1) 1,4-Difluorobenzene	6.29	114	253267	5.00	ug/L	0.00
28) Chlorobenzene-d5	9.45	117	283272	5.00	ug/L	0.00
60) 1,4-Dichlorobenzene-d4	11.83	152	142631	5.00	ug/L	0.00

## System Monitoring Compounds

4) Vinyl Chloride-d3	1.61	65	111392	4.99	ug/L	0.00
Spiked Amount	5.000	Range	40 - 130	Recovery	=	99.80%
7) Chloroethane-d5	1.93	69	97517	4.88	ug/L	0.00
Spiked Amount	5.000	Range	65 - 130	Recovery	=	97.60%
11) 1,1-Dichloroethene-d2	2.59	63	112042	3.48	ug/L	0.00
Spiked Amount	5.000	Range	60 - 125	Recovery	=	69.60%
20) 2-Butanone-d5	4.70	46	190451	45.58	ug/L	0.00
Spiked Amount	50.000	Range	40 - 130	Recovery	=	91.16%
24) Chloroform-d	5.11	84	158782	4.43	ug/L	0.00
Spiked Amount	5.000	Range	70 - 125	Recovery	=	88.60%
26) 1,2-Dichloroethane-d4	5.75	65	85695	4.55	ug/L	0.00
Spiked Amount	5.000	Range	70 - 130	Recovery	=	91.00%
32) Benzene-d6	5.77	84	297274	4.18	ug/L	0.00
Spiked Amount	5.000	Range	70 - 125	Recovery	=	83.60%
36) 1,2-Dichloropropane-d6	6.73	67	93036	4.15	ug/L	0.00
Spiked Amount	5.000	Range	60 - 140	Recovery	=	83.00%
41) Toluene-d8	7.93	98	238993	3.57	ug/L	0.00
Spiked Amount	5.000	Range	70 - 130	Recovery	=	71.40%
43) trans-1,3-Dichloropropene-	8.21	79	35956	3.90	ug/L	0.00
Spiked Amount	5.000	Range	55 - 130	Recovery	=	78.00%
46) 2-Hexanone-d5	8.67	63	156749	44.41	ug/L	0.00
Spiked Amount	50.000	Range	45 - 130	Recovery	=	88.82%
57) 1,1,2,2-Tetrachloroethane-	10.78	84	86357	4.21	ug/L	0.00
Spiked Amount	5.000	Range	65 - 120	Recovery	=	84.20%
64) 1,2-Dichlorobenzene-d4	12.21	152	113231	4.15	ug/L	0.00
Spiked Amount	5.000	Range	80 - 120	Recovery	=	83.00%

## Target Compounds

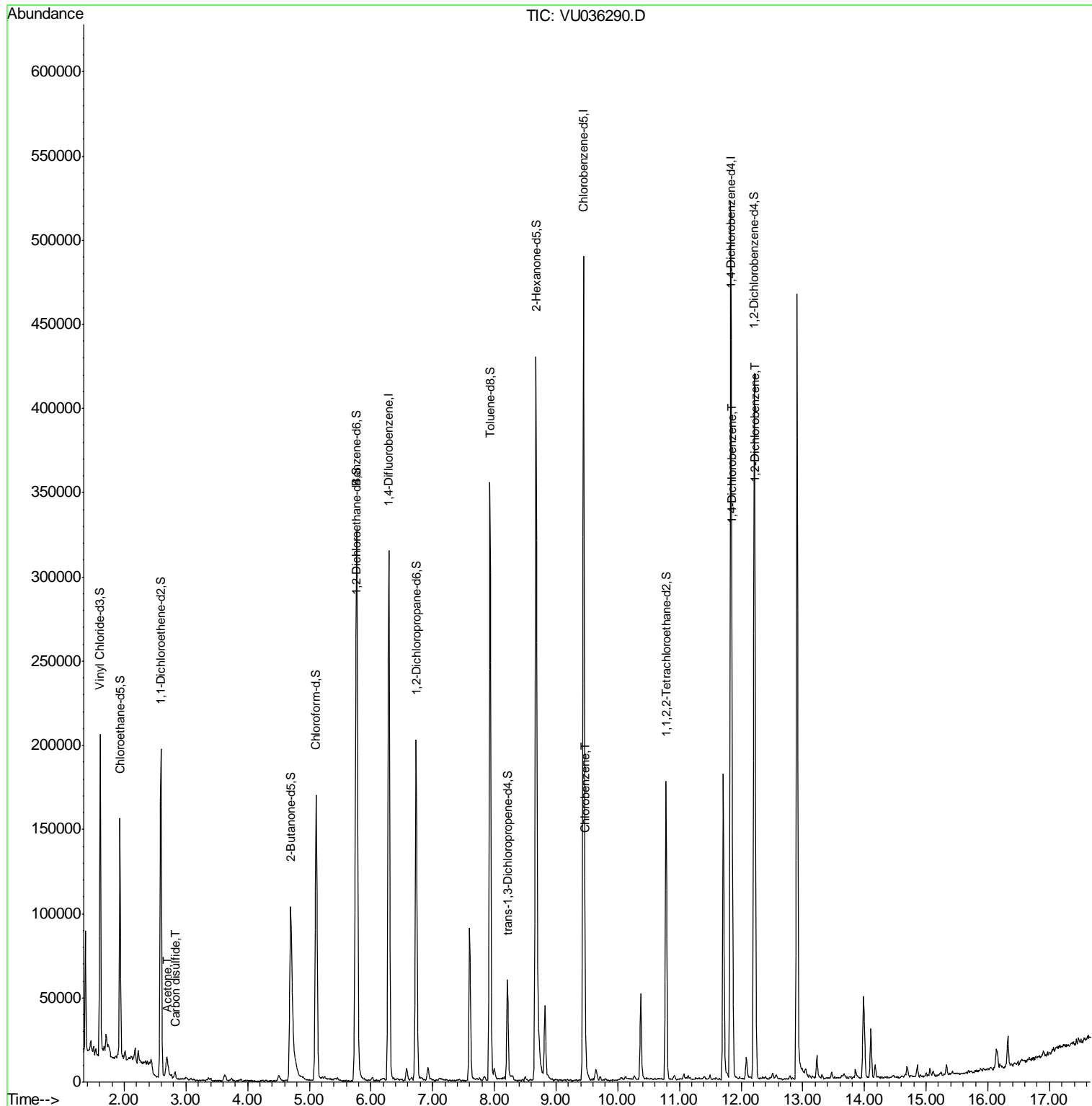
Target Compounds	R.T.	QIon	Response	Conc	Units	Ovalue
13) Acetone	2.69	43	23850	6.550	ug/L	95
14) Carbon disulfide	2.82	76	5704	0.090	ug/L #	91
51) Chlorobenzene	9.47	112	10188	0.165	ug/L	92
63) 1,4-Dichlorobenzene	11.86	146	49294	1.033	ug/L	97
65) 1,2-Dichlorobenzene	12.23	146	33459	0.730	ug/L	98

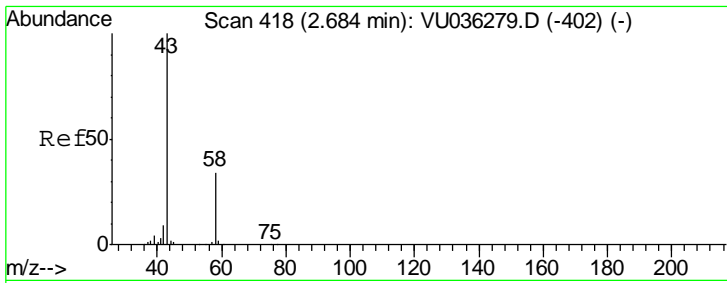
(#) = qualifier out of range (m) = manual integration (+) = signals summed

Data Path : Z:\VOASRV\HPCHEM1\MSVOA U\DATA\VU121919\  
 Data File : VU036290.D  
 Acq On : 19 Dec 2019 18:10  
 Operator : JC/MD  
 Sample : K6282-09  
 Misc : 25.0mL/MSVOA U/WATER  
 ALS Vial : 14 Sample Multiplier: 1

Instrument :  
 MSVOA\_U  
 Client Sampled :  
 BFDW5

Quant Time: Dec 20 04:27:29 2019  
 Quant Method : Z:\VOASRV\HPCHEM1\MSVOA\_U\METHOD\SOMUTR121319WMA.M  
 Quant Title : TRACE VOA SOM01.0  
 QLast Update : Fri Dec 20 03:13:48 2019  
 Response via : Initial Calibration

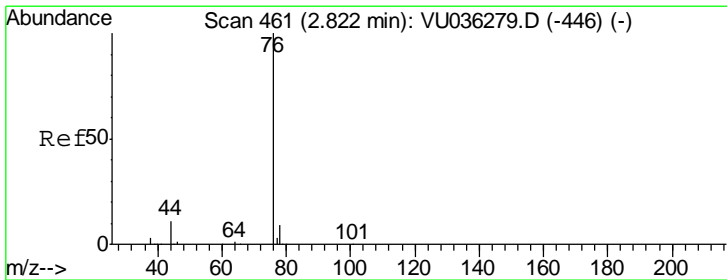
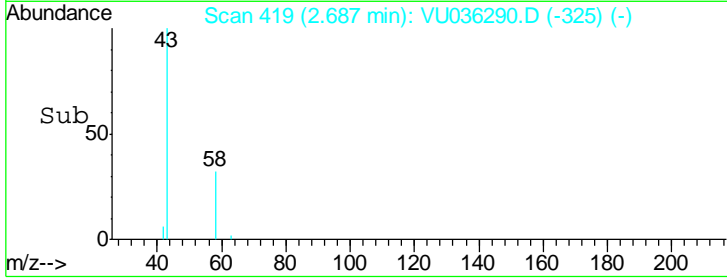
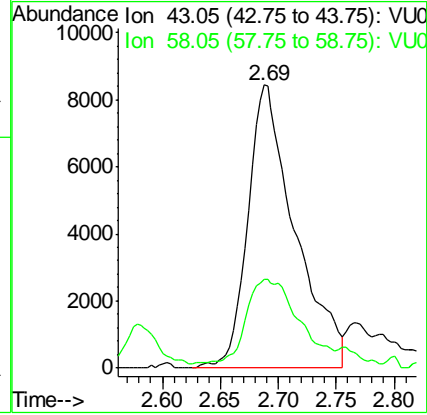
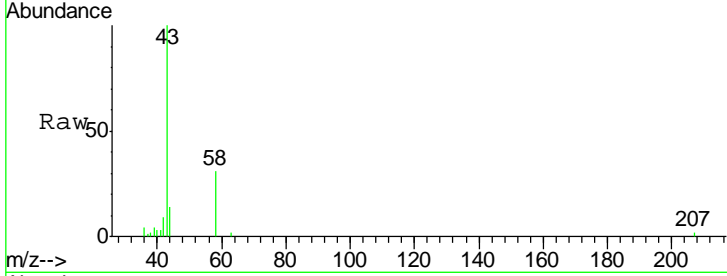




#13  
 Acetone  
 Concen: 6.550 ug/L  
 RT: 2.69 min Scan# 419  
 Delta R.T. 0.00 min  
 Lab File: VU036290.D  
 Acq: 19 Dec 2019 18:10

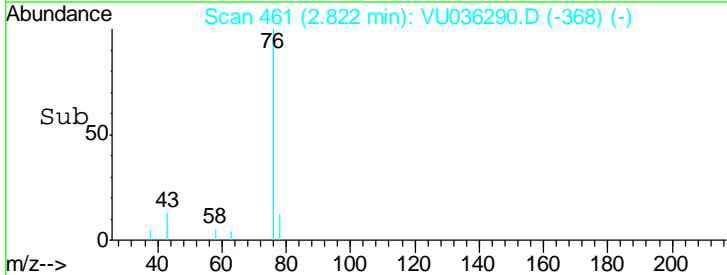
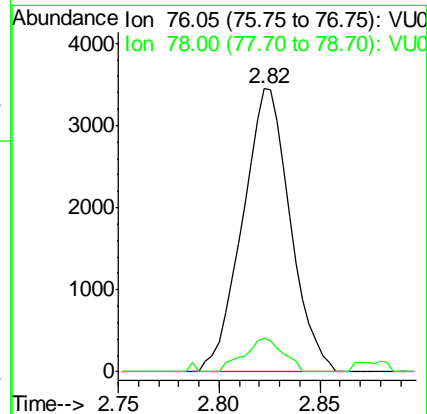
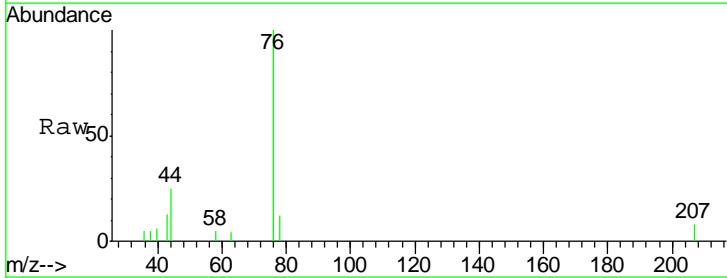
Instrument :  
 MSVOA\_U  
 ClientSampled :  
 BFDW5

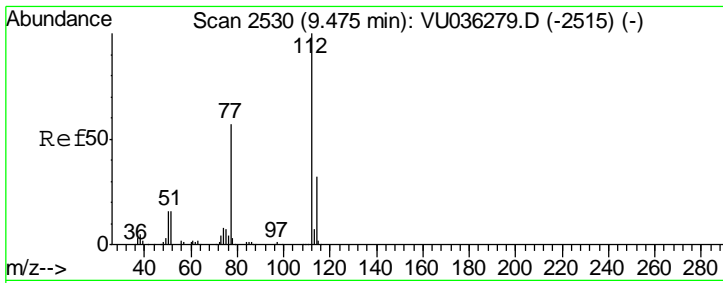
Tgt Ion	Resp	Lower	Upper
43	100		
58	36.7	0.0	67.6



#14  
 Carbon disulfide  
 Concen: 0.090 ug/L  
 RT: 2.82 min Scan# 461  
 Delta R.T. -0.00 min  
 Lab File: VU036290.D  
 Acq: 19 Dec 2019 18:10

Tgt Ion	Resp	Lower	Upper
76	100		
78	12.1	7.1	10.7#

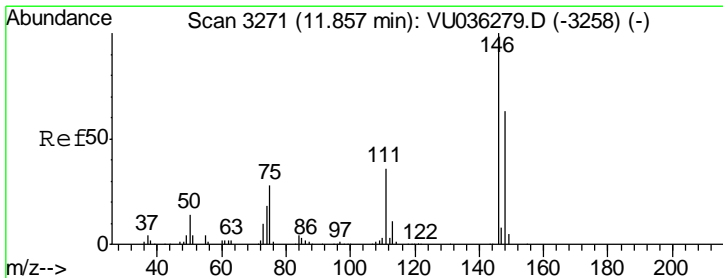
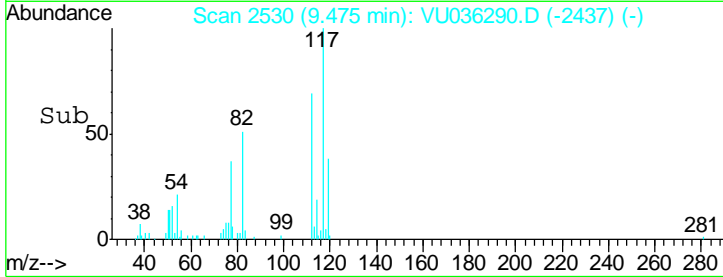
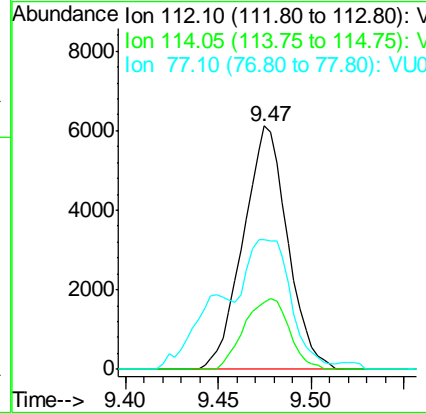
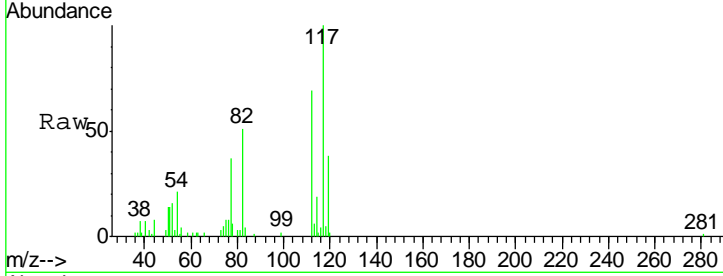




#51  
 Chlorobenzene  
 Concen: 0.165 ug/L  
 RT: 9.47 min Scan# 2530  
 Delta R.T. -0.00 min  
 Lab File: VU036290.D  
 Acq: 19 Dec 2019 18:10

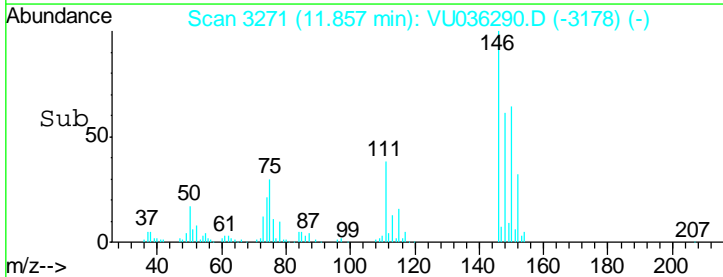
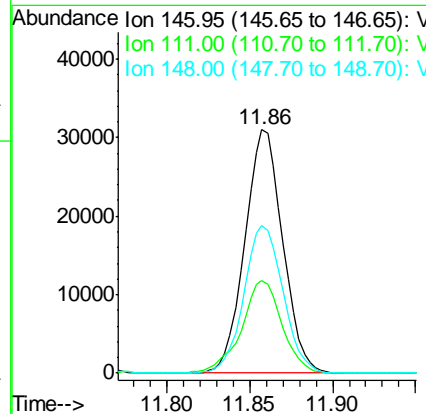
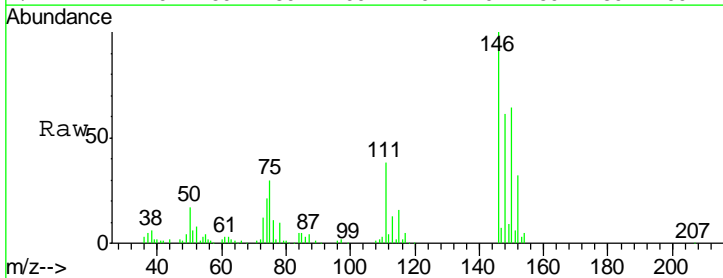
Instrument :  
 MSVOA\_U  
 ClientSampled :  
 BFDW5

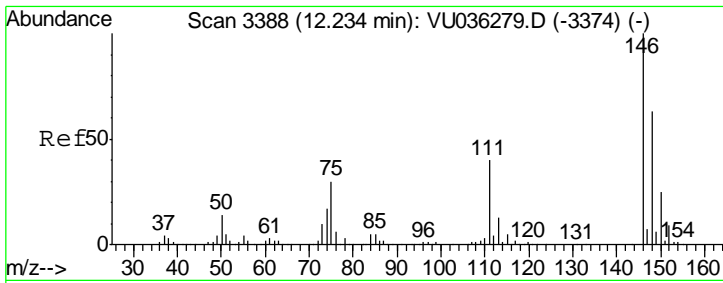
Tgt Ion	Resp	Lower	Upper
112	10188		
114	27.4	23.2	43.2
77	53.3	46.5	69.7



#63  
 1,4-Dichlorobenzene  
 Concen: 1.033 ug/L  
 RT: 11.86 min Scan# 3271  
 Delta R.T. -0.00 min  
 Lab File: VU036290.D  
 Acq: 19 Dec 2019 18:10

Tgt Ion	Resp	Lower	Upper
146	49294		
111	38.1	25.8	48.0
148	60.9	44.7	82.9





#65  
 1,2-Dichlorobenzene  
 Concen: 0.730 ug/L  
 RT: 12.23 min Scan# 3388  
 Delta R.T. -0.00 min  
 Lab File: VU036290.D  
 Acq: 19 Dec 2019 18:10

Instrument :  
 MSVOA\_U  
 ClientSampled :  
 BFDW5

Tot Ion	Resp	Lower	Upper
146	33459		
111	40.7	32.5	48.7
148	63.8	49.2	73.8

