

Data Path : Z:\voasrv\HPCHEM1\MSVOA\_U\Data\VU121923\  
 Data File : VU057069.D  
 Acq On : 20 Dec 2023 01:39  
 Operator : MD/SY  
 Sample : 05865-12  
 Misc : 25.0mL/MSVOA\_U/WATER  
 ALS Vial : 41 Sample Multiplier: 1

Instrument :  
 MSVOA\_U  
 ClientSampleId :  
 F7C77

Integration Parameters: rteint.p  
 Integrator: RTE  
 Smoothing : ON Filtering: 5  
 Sampling : 1 Min Area: 3 % of largest Peak  
 Start Thrs: 0.1 Max Peaks: 100  
 Stop Thrs : 0 Peak Location: TOP

If leading or trailing edge < 100 prefer < Baseline drop else tangent >  
 Peak separation: 5

Method : Z:\voasrv\HPCHEM1\MSVOA\_U\Method\SFAMUTR121123WMA.M  
 Title : TRACE VOA SFAM1.0

Signal : TIC: VU057069.D\data.ms

peak #	R.T. min	first scan	max scan	last scan	PK TY	peak height	corr. area	corr. % max.	% of total
1	1.595	87	95	109	rVB	93610	107645	4.26%	1.342%
2	1.907	184	192	205	rVB	76186	101978	4.03%	1.271%
3	2.563	384	396	411	rBV	144995	239122	9.46%	2.981%
4	4.618	1024	1035	1061	rBV	80174	208539	8.25%	2.600%
5	5.055	1154	1171	1196	rBV	145541	362279	14.33%	4.516%
6	5.717	1357	1377	1404	rBV3	259387	678902	26.85%	8.463%
7	6.245	1528	1541	1562	rBV	223818	435776	17.23%	5.432%
8	6.685	1662	1678	1703	rBV2	159879	319199	12.62%	3.979%
9	7.560	1939	1950	1973	rBV	75469	136135	5.38%	1.697%
10	7.894	2037	2054	2081	rBV	297823	539316	21.33%	6.723%
11	8.177	2132	2142	2161	rBV	44530	79026	3.13%	0.985%
12	8.547	2243	2257	2273	rBV	1501712	2528440	100.00%	31.519%
13	8.627	2273	2282	2316	rVB2	295975	590958	23.37%	7.367%
14	9.412	2514	2526	2550	rBV	323161	560798	22.18%	6.991%
15	10.749	2929	2942	2958	rBV	111730	184069	7.28%	2.295%
16	11.807	3258	3271	3290	rBV	291900	484737	19.17%	6.043%
17	12.187	3377	3389	3410	rBV	274534	464916	18.39%	5.796%

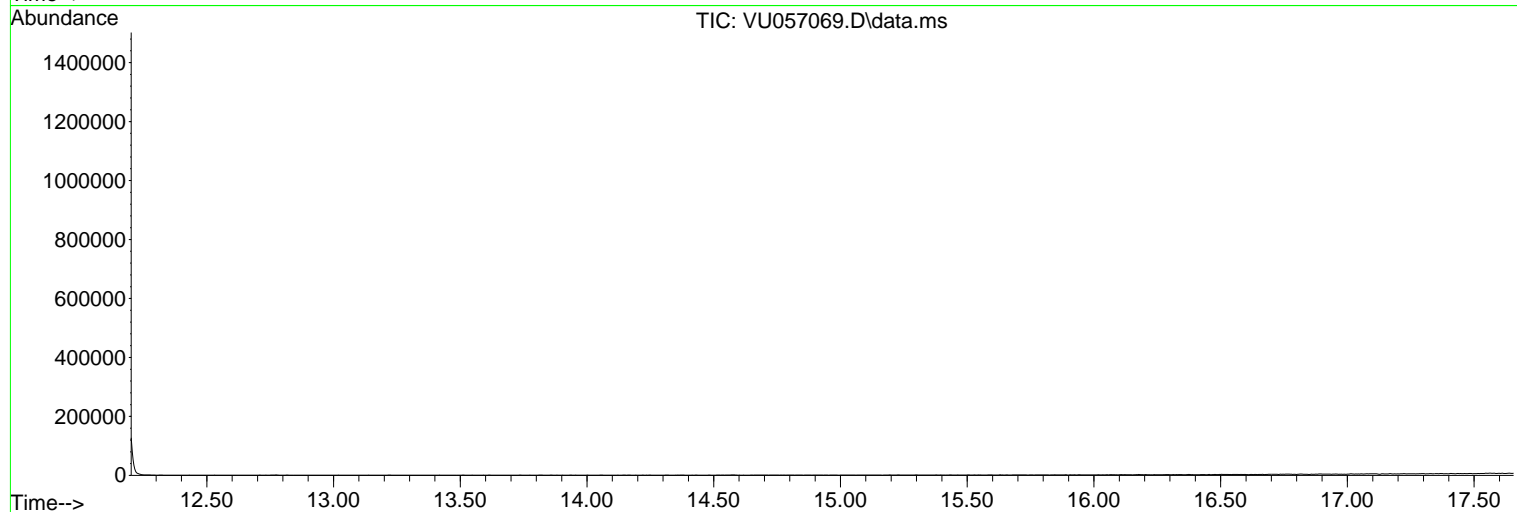
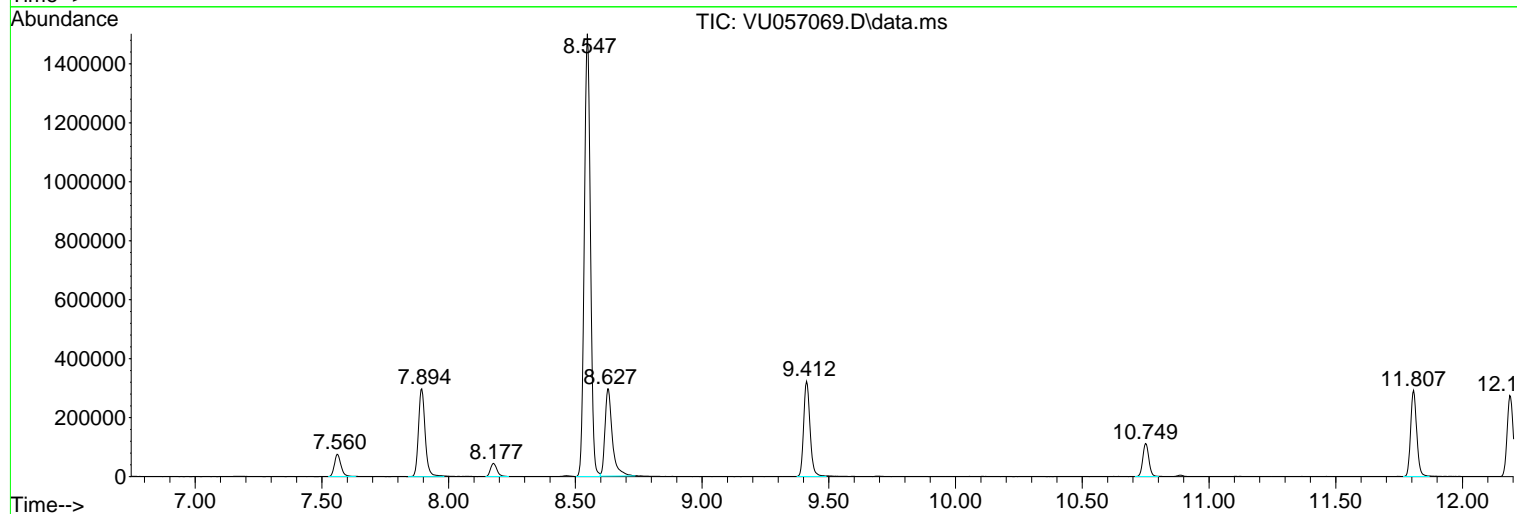
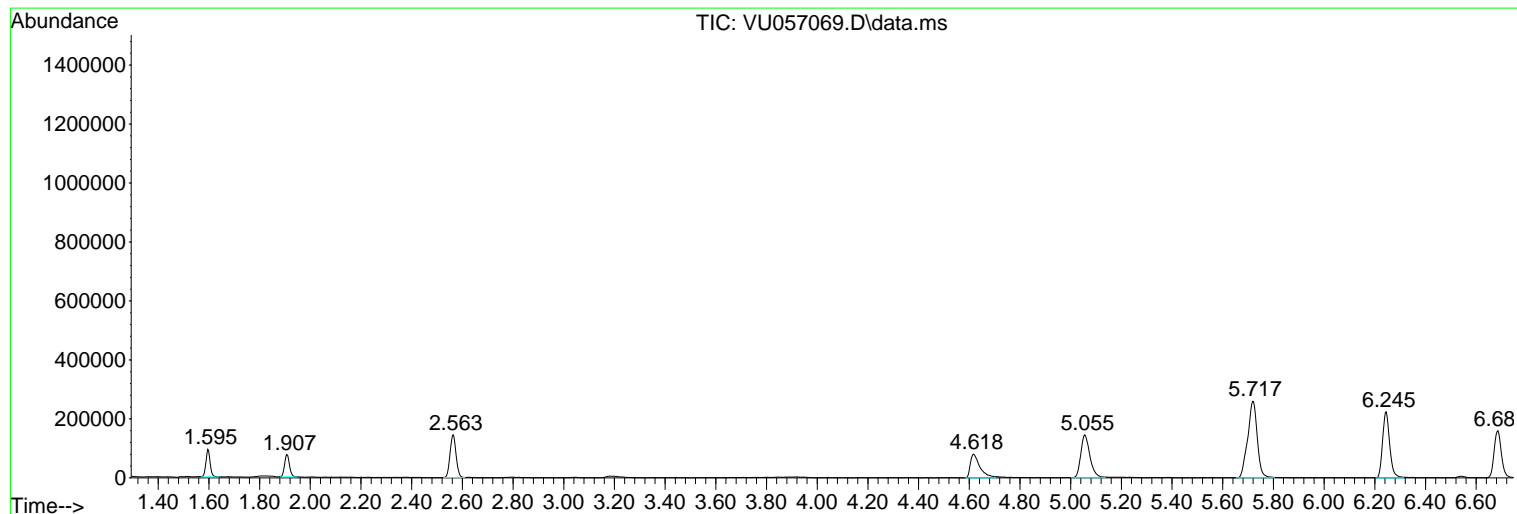
Sum of corrected areas: 8021835

Data Path : Z:\voasrv\HPCHEM1\MSVOA\_U\Data\VU121923\  
Data File : VU057069.D  
Acq On : 20 Dec 2023 01:39  
Operator : MD/SY  
Sample : 05865-12  
Misc : 25.0mL/MSVOA\_U/WATER  
ALS Vial : 41 Sample Multiplier: 1

Instrument :  
MSVOA\_U  
ClientSampleId :  
F7C77

Quant Method : Z:\voasrv\HPCHEM1\MSVOA\_U\Method\SFAMUTR121123WMA.M  
Quant Title : TRACE VOA SFAM1.0

TIC Library : C:\Database\NIST20.L  
TIC Integration Parameters: LSCINT.P



Library Search Compound Report

Data Path : Z:\voasrv\HPCHEM1\MSVOA\_U\Data\VU121923\  
Data File : VU057069.D  
Acq On : 20 Dec 2023 01:39  
Operator : MD/SY  
Sample : 05865-12  
Misc : 25.0mL/MSVOA\_U/WATER  
ALS Vial : 41 Sample Multiplier: 1

Instrument :  
MSVOA\_U  
ClientSampleId :  
F7C77

Quant Method : Z:\voasrv\HPCHEM1\MSVOA\_U\Method\SFAMUTR121123WMA.M  
Quant Title : TRACE VOA SFAM1.0

TIC Library : C:\Database\NIST20.L  
TIC Integration Parameters: LSCINT.P

No Library Search Compounds Detected

\*\*\*\*\*

Data Path : Z:\voasrv\HPCHEM1\MSVOA\_U\Data\VU121923\  
Data File : VU057069.D  
Acq On : 20 Dec 2023 01:39  
Operator : MD/SY  
Sample : 05865-12  
Misc : 25.0mL/MSVOA\_U/WATER  
ALS Vial : 41 Sample Multiplier: 1

Instrument :  
MSVOA\_U  
ClientSampleId :  
F7C77

Quant Method : Z:\voasrv\HPCHEM1\MSVOA\_U\Method\SFAMUTR121123WMA.M  
Quant Title : TRACE VOA SFAM1.0

TIC Library : C:\Database\NIST0.L  
TIC Integration Parameters: LSCINT.P

TIC Top Hit name	RT	EstConc	Units	Response	--Internal Standard--		
					#	RT	Resp Conc

---