

Data File : VU028824.D
 Acq On : 20 Dec 2018 15:06
 Operator : MD/SY
 Sample : J6468-20
 Misc : 6.84g/5mL/100uL/5.0mL/MSVOA_U/MEOH
 ALS Vial : 16 Sample Multiplier: 1

Instrument :
 MSVOA_U
 ClientSampleId :
 C0JH6

Quant Time: Dec 21 03:56:49 2018
 Quant Method : Z:\VOASRV\HPCHEM1\MSVOA_U\METHOD\SOMULM122018WMA.M
 Quant Title : VOC Analysis
 QLast Update : Fri Dec 21 03:50:07 2018
 Response via : Initial Calibration

Internal Standards	R.T.	QIon	Response	Conc	Units	Dev(Min)
1) 1,4-Difluorobenzene	5.88	114	228356	50.00	ug/L	0.00
28) Chlorobenzene-d5	9.09	117	221204	50.00	ug/L	0.00
60) 1,4-Dichlorobenzene-d4	11.48	152	109137	50.00	ug/L	0.00

System Monitoring Compounds

4) Vinyl Chloride-d3	1.40	65	69486	37.96	ug/L	0.00
Spiked Amount	50.000	Range	60 - 135	Recovery	=	75.92%
7) Chloroethane-d5	1.64	69	38832	27.46	ug/L	-0.03
Spiked Amount	50.000	Range	70 - 130	Recovery	=	54.92%#
11) 1,1-Dichloroethene-d2	2.23	63	89831	29.18	ug/L	-0.04
Spiked Amount	50.000	Range	60 - 125	Recovery	=	58.36%#
21) 2-Butanone-d5	4.19	46	113351	88.37	ug/L	0.02
Spiked Amount	100.000	Range	40 - 130	Recovery	=	88.37%
24) Chloroform-d	4.64	84	116953	40.63	ug/L	0.00
Spiked Amount	50.000	Range	70 - 125	Recovery	=	81.26%
26) 1,2-Dichloroethane-d4	5.30	65	73793	41.58	ug/L	0.00
Spiked Amount	50.000	Range	70 - 125	Recovery	=	83.16%
32) Benzene-d6	5.33	84	257387	41.19	ug/L	0.00
Spiked Amount	50.000	Range	70 - 125	Recovery	=	82.38%
36) 1,2-Dichloropropane-d6	6.33	67	90216	42.49	ug/L	0.00
Spiked Amount	50.000	Range	70 - 120	Recovery	=	84.98%
41) Toluene-d8	7.56	98	231798	40.93	ug/L	0.00
Spiked Amount	50.000	Range	80 - 120	Recovery	=	81.86%
43) trans-1,3-Dichloropropene-	7.85	79	39798	41.84	ug/L	0.00
Spiked Amount	50.000	Range	60 - 125	Recovery	=	83.68%
47) 2-Hexanone-d5	8.32	63	100037	99.21	ug/L	0.02
Spiked Amount	100.000	Range	45 - 130	Recovery	=	99.21%
57) 1,1,2,2-Tetrachloroethane-	10.44	84	138129	46.90	ug/L	0.00
Spiked Amount	50.000	Range	65 - 120	Recovery	=	93.80%
64) 1,2-Dichlorobenzene-d4	11.86	152	95347	43.20	ug/L	0.00
Spiked Amount	50.000	Range	80 - 120	Recovery	=	86.40%

Target Compounds

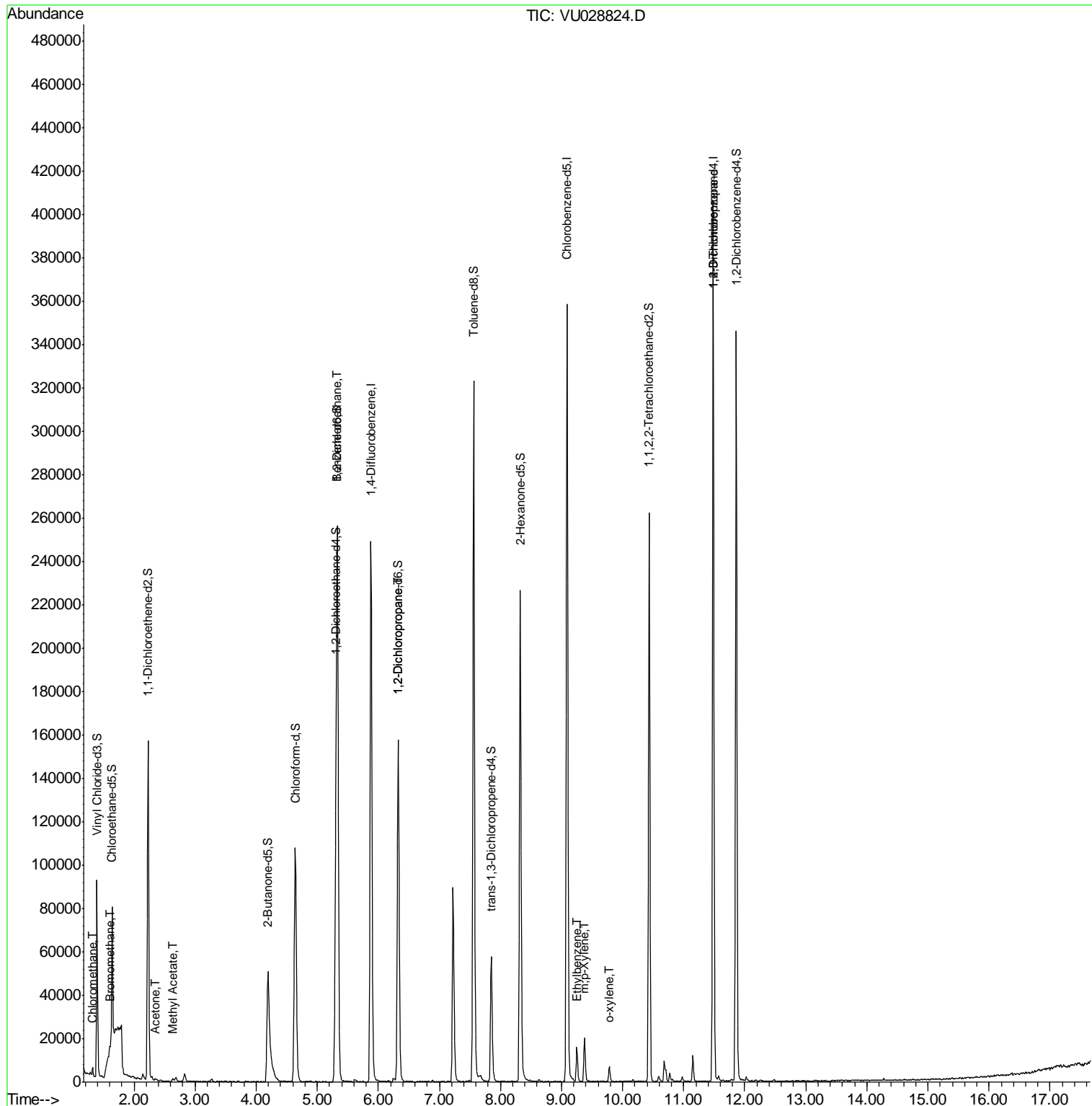
						Qvalue
3) Chloromethane	1.32	50	3428	1.354	ug/L	96
6) Bromomethane	1.60	94	557	0.585	ug/L	97
13) Acetone	2.35	43	772	0.591	ug/L	73
15) Methyl Acetate	2.64	43	2212	1.085	ug/L	98
27) 1,2-Dichloroethane	5.33	62	1178	0.540	ug/L #	74
37) 1,2-Dichloropropane	6.33	63	8304	4.218	ug/L #	90
52) Ethylbenzene	9.25	91	13633	1.777	ug/L	99
53) m,p-Xylene	9.38	106	6803	2.398	ug/L	85
54) o-xylene	9.78	106	2001	0.704	ug/L	94
59) 1,2,3-Trichloropropane	11.48	75	13386	5.698	ug/L	97

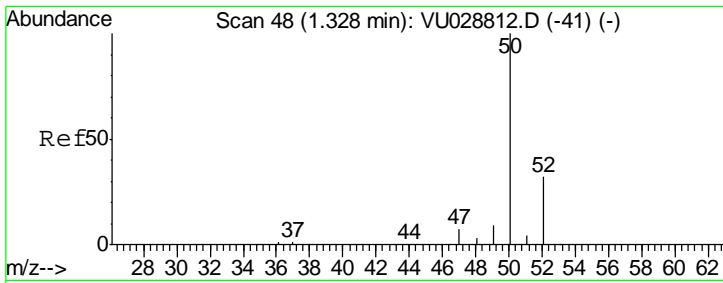
(#) = qualifier out of range (m) = manual integration (+) = signals summed

Data File : VU028824.D
Acq On : 20 Dec 2018 15:06
Operator : MD/SY
Sample : J6468-20
Misc : 6.84g/5mL/100uL/5.0mL/MSVOA_U/MEOH
ALS Vial : 16 Sample Multiplier: 1

Instrument :
MSVOA_U
ClientSampled :
C0JH6

Quant Time: Dec 21 03:56:49 2018
Quant Method : Z:\VOASRV\HPCHEM1\MSVOA_U\METHOD\SOMULM122018WMA.M
Quant Title : VOC Analysis
QLast Update : Fri Dec 21 03:50:07 2018
Response via : Initial Calibration



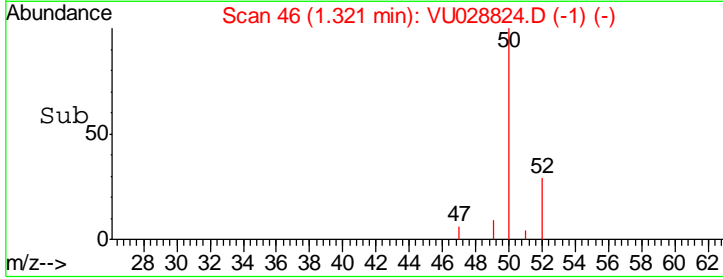
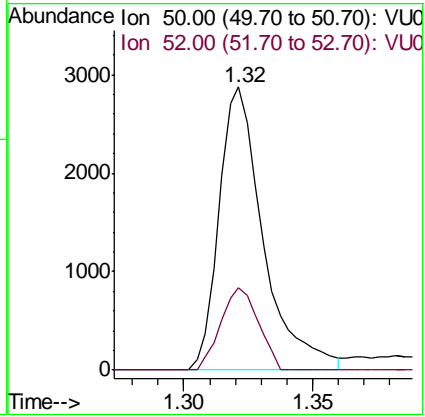
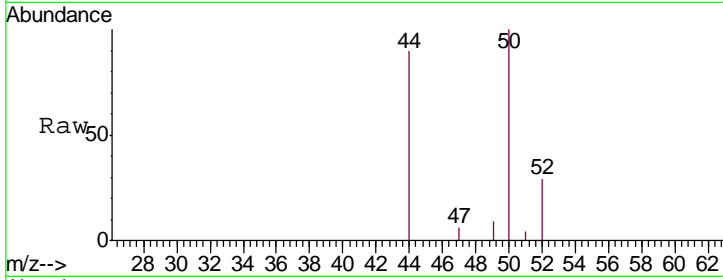


#3
 Chloromethane
 Concen: 1.354 ug/L
 RT: 1.32 min Scan# 46
 Delta R.T. -0.01 min
 Lab File: VU028824.D
 Acq: 20 Dec 2018 15:06

Instrument :
 MSVOA_U
ClientSampled :
 C0JH6

Tgt Ion: 50 Resp: 3428

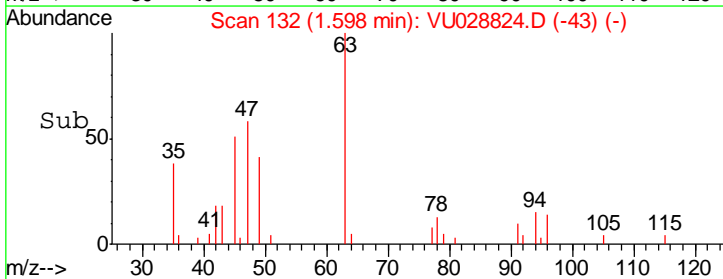
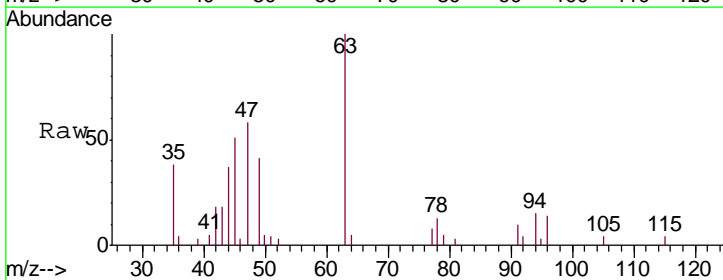
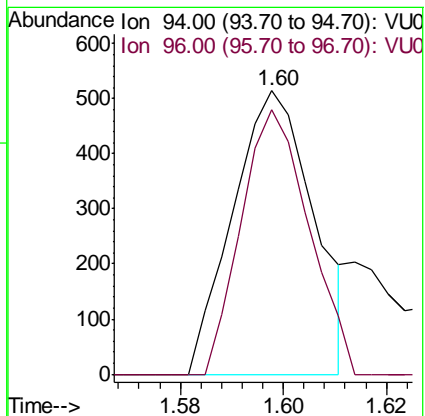
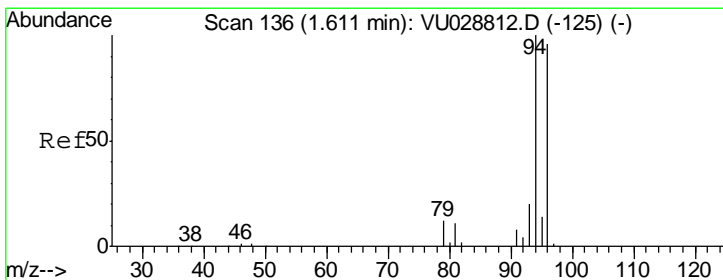
Ion	Ratio	Lower	Upper
50	100		
52	29.3	22.3	41.3

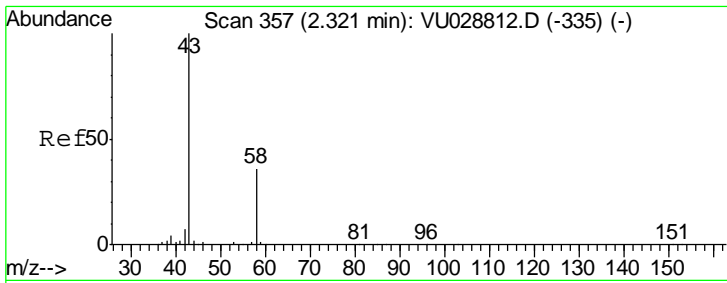


#6
 Bromomethane
 Concen: 0.585 ug/L
 RT: 1.60 min Scan# 132
 Delta R.T. -0.01 min
 Lab File: VU028824.D
 Acq: 20 Dec 2018 15:06

Tgt Ion: 94 Resp: 557

Ion	Ratio	Lower	Upper
94	100		
96	93.4	67.3	125.1

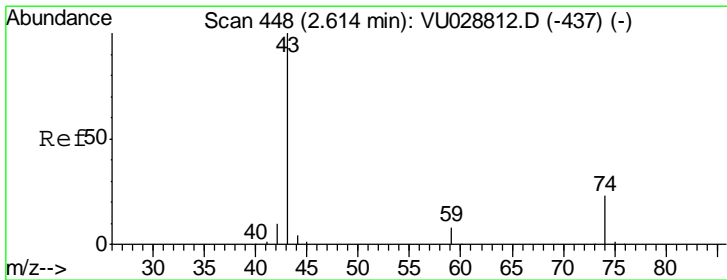
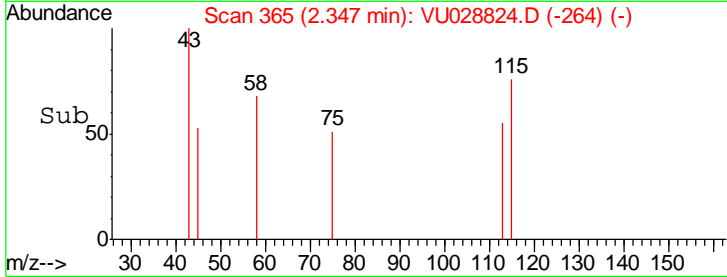
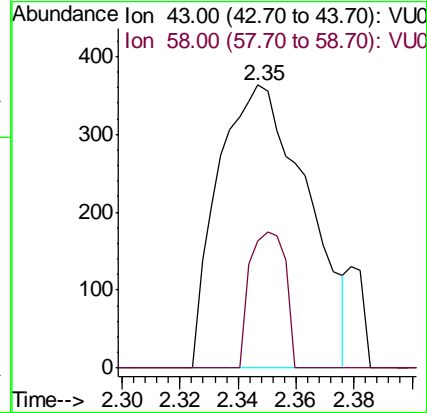
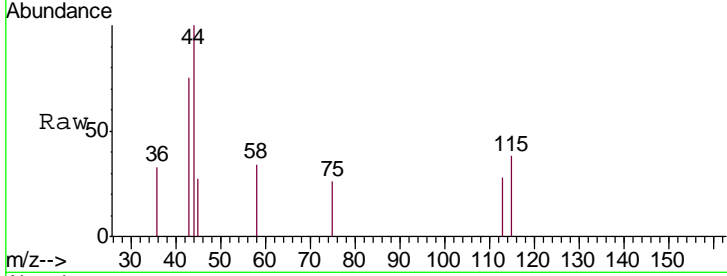




#13
 Acetone
 Concen: 0.591 ug/L
 RT: 2.35 min Scan# 365
 Delta R.T. 0.03 min
 Lab File: VU028824.D
 Acq: 20 Dec 2018 15:06

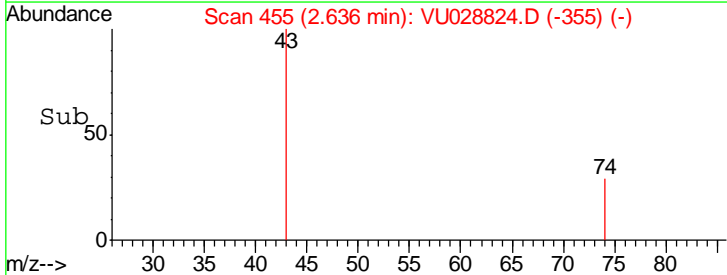
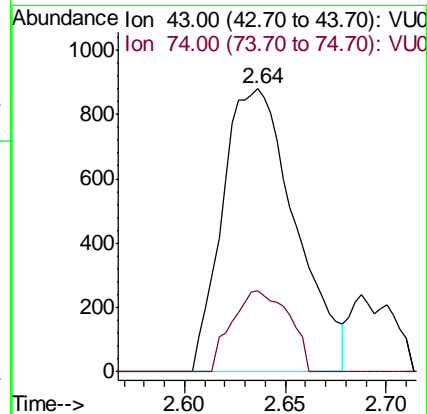
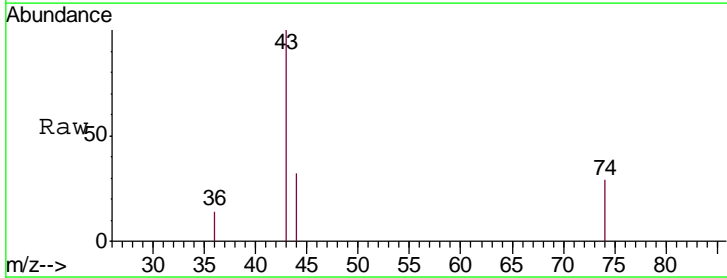
Instrument :
 MSVOA_U
 ClientSampled :
 C0JH6

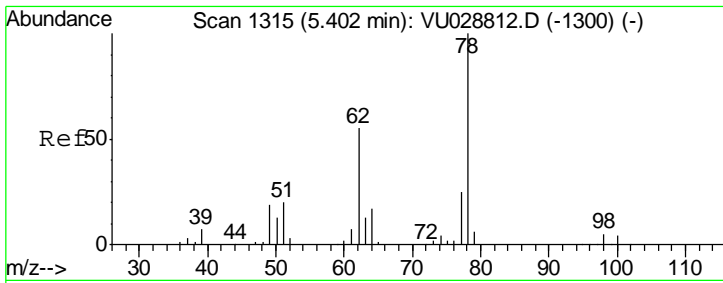
Tgt Ion: 43 Resp: 772
 Ion Ratio Lower Upper
 43 100
 58 19.6 0.0 70.2



#15
 Methyl Acetate
 Concen: 1.085 ug/L
 RT: 2.64 min Scan# 455
 Delta R.T. 0.02 min
 Lab File: VU028824.D
 Acq: 20 Dec 2018 15:06

Tgt Ion: 43 Resp: 2212
 Ion Ratio Lower Upper
 43 100
 74 22.6 19.0 28.4

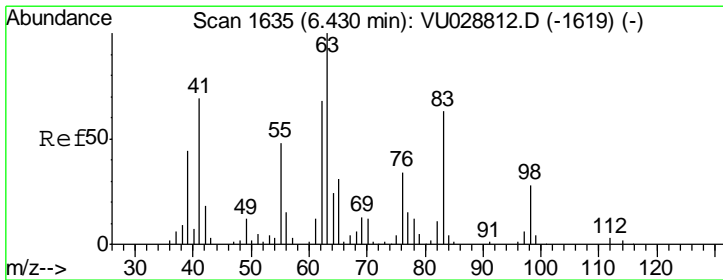
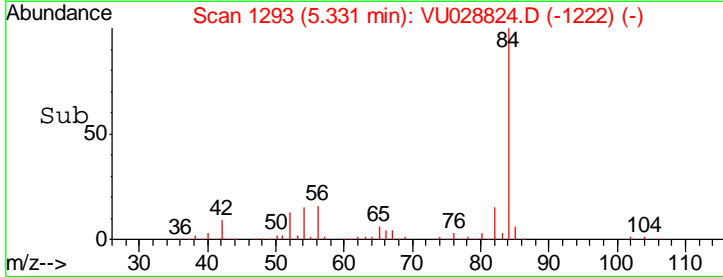
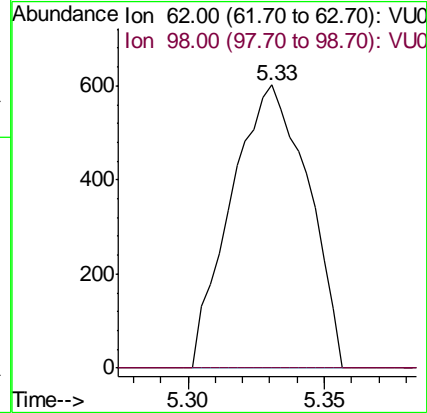
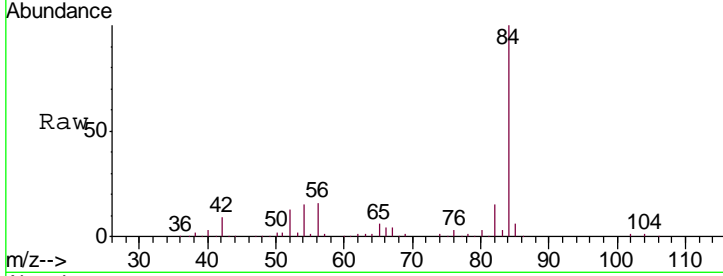




#27
 1,2-Dichloroethane
 Concen: 0.540 ug/L
 RT: 5.33 min Scan# 1293
 Delta R.T. -0.07 min
 Lab File: VU028824.D
 Acq: 20 Dec 2018 15:06

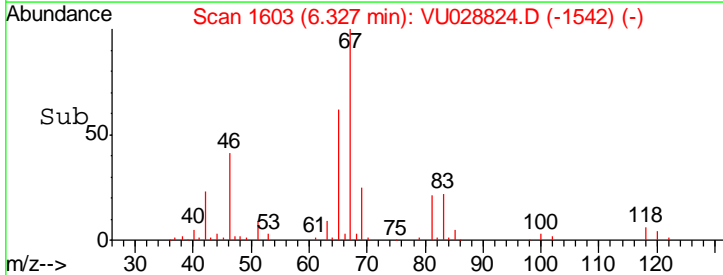
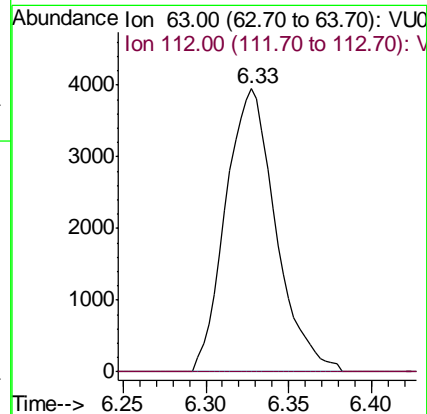
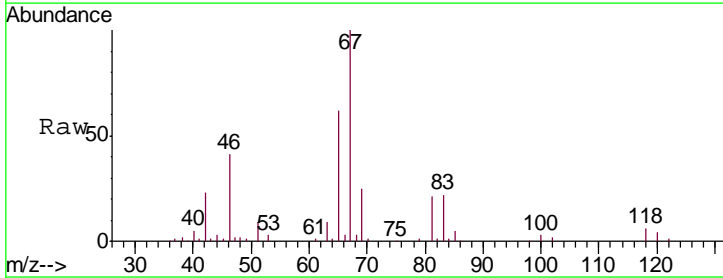
Instrument :
 MSVOA_U
 ClientSampled :
 C0JH6

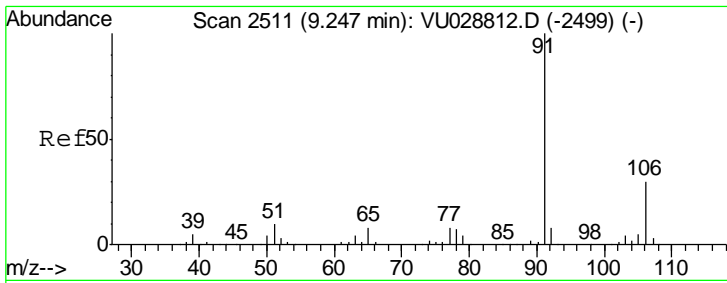
Tgt Ion: 62 Resp: 1178
 Ion Ratio Lower Upper
 62 100
 98 0.0 7.5 11.3#



#37
 1,2-Dichloropropane
 Concen: 4.218 ug/L
 RT: 6.33 min Scan# 1603
 Delta R.T. -0.10 min
 Lab File: VU028824.D
 Acq: 20 Dec 2018 15:06

Tgt Ion: 63 Resp: 8304
 Ion Ratio Lower Upper
 63 100
 112 0.0 2.7 4.1#

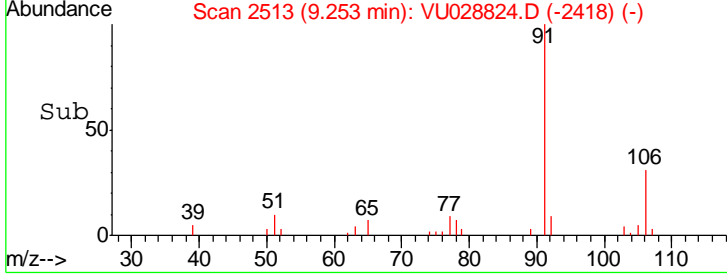
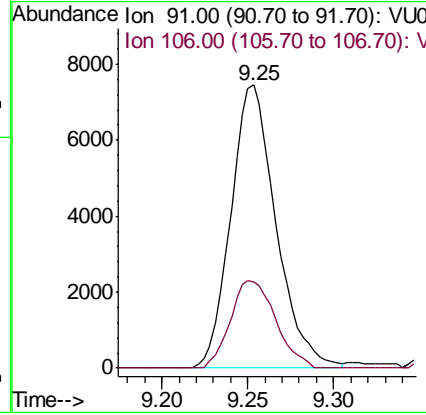
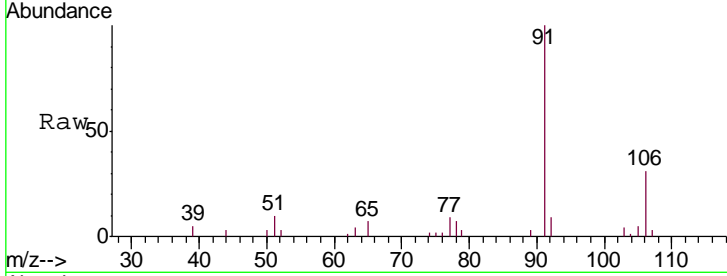




#52
 Ethylbenzene
 Concen: 1.777 ug/L
 RT: 9.25 min Scan# 2513
 Delta R.T. 0.01 min
 Lab File: VU028824.D
 Acq: 20 Dec 2018 15:06

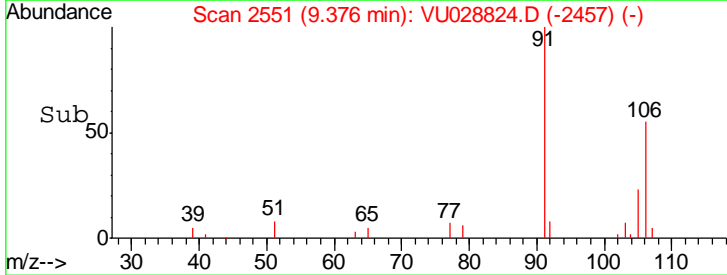
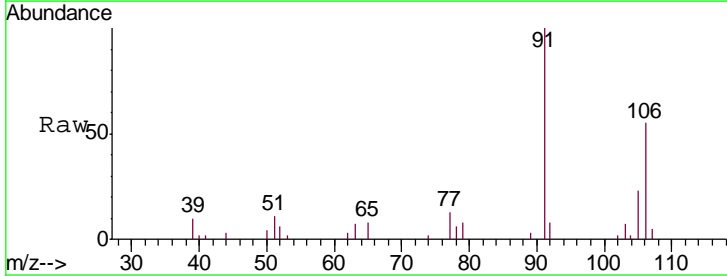
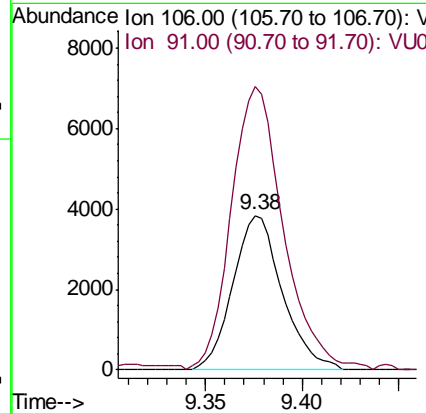
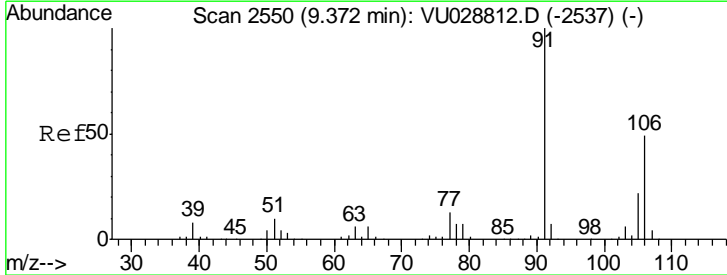
Instrument : MSVOA_U
 ClientSampled : C0JH6

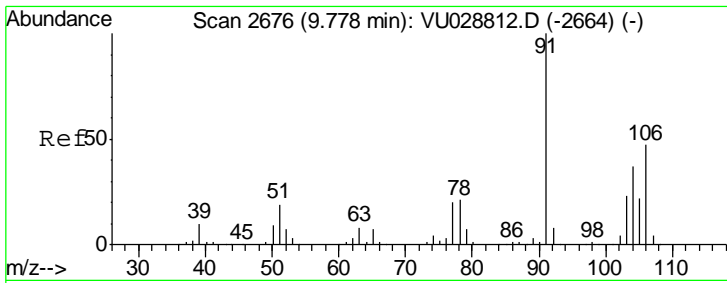
Tgt Ion: 91 Resp: 13633
 Ion Ratio Lower Upper
 91 100
 106 30.7 20.9 38.9



#53
 m,p-Xylene
 Concen: 2.398 ug/L
 RT: 9.38 min Scan# 2551
 Delta R.T. 0.00 min
 Lab File: VU028824.D
 Acq: 20 Dec 2018 15:06

Tgt Ion: 106 Resp: 6803
 Ion Ratio Lower Upper
 106 100
 91 183.2 144.1 267.5

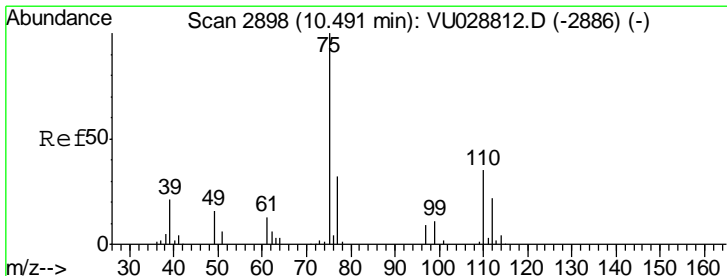
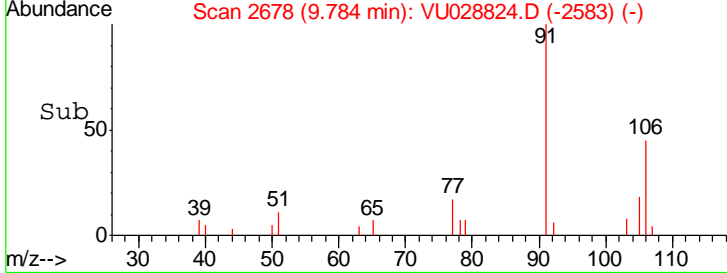
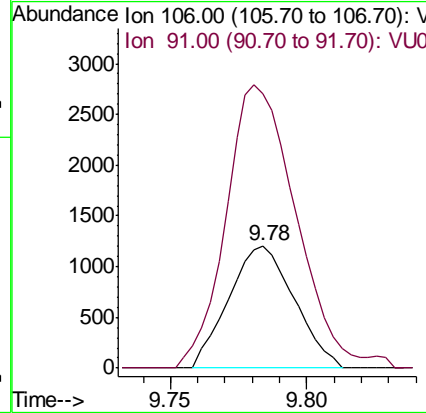
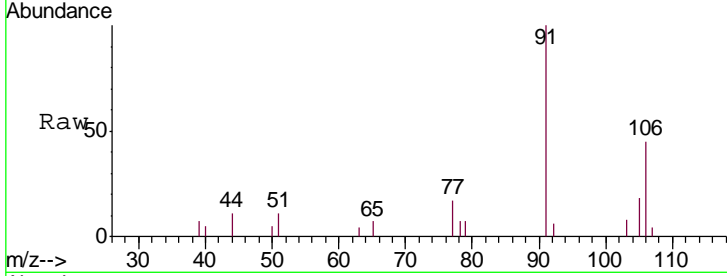




#54
 o-xylene
 Concen: 0.704 ug/L
 RT: 9.78 min Scan# 2678
 Delta R.T. 0.01 min
 Lab File: VU028824.D
 Acq: 20 Dec 2018 15:06

Instrument : MSVOA_U
 ClientSampled : C0JH6

Tgt Ion: 106 Resp: 2001
 Ion Ratio Lower Upper
 106 100
 91 224.3 150.4 279.4



#59
 1,2,3-Trichloropropane
 Concen: 5.698 ug/L
 RT: 11.48 min Scan# 3207
 Delta R.T. 0.99 min
 Lab File: VU028824.D
 Acq: 20 Dec 2018 15:06

Tgt Ion: 75 Resp: 13386
 Ion Ratio Lower Upper
 75 100
 77 33.8 25.5 38.3

