

Data Path : Z:\VOASRV\HPCHEM1\MSVOA_U\DATA\VU122018\
 Data File : VU028830.D
 Acq On : 20 Dec 2018 17:30
 Operator : MD/SY
 Sample : J6419-15ME
 Misc : 5.74g/5mL/100uL/5.0mL/MSVOA_U/MEOH
 ALS Vial : 22 Sample Multiplier: 1

Instrument :
 MSVOA_U
 ClientSampleId :
 BF043ME

Integration Parameters: LSCINT.P

Integrator: RTE
 Smoothing : OFF
 Sampling : 1
 Start Thrs: 0.2
 Stop Thrs : 0

Filtering: 5
 Min Area: 0 % of largest Peak
 Max Peaks: 100
 Peak Location: TOP

If leading or trailing edge < 100 prefer < Baseline drop else tangent >
 Peak separation: 5

Method : Z:\VOASRV\HPCHEM1\MSVOA_U\METHOD\SOMULM122018WMA.M
 Title : VOC Analysis

Signal : TIC

peak #	R.T. min	first scan	max scan	last scan	PK TY	peak height	corr. area	corr. % max.	% of total
1	1.395	62	69	84	rVB	89043	103025	8.41%	1.451%
2	1.640	141	145	155	rVB	61148	61864	5.05%	0.871%
3	2.238	320	331	345	rBV	147855	227637	18.58%	3.205%
4	2.517	417	418	422	rBV	252	84	0.01%	0.001%
5	2.685	463	470	478	rVB3	1878	2724	0.22%	0.038%
6	2.829	503	515	535	rVB2	6668	14606	1.19%	0.206%
7	2.903	535	538	541	rBV	243	145	0.01%	0.002%
8	2.919	541	543	549	rVB	238	121	0.01%	0.002%
9	3.225	635	638	640	rBV	90	54	0.00%	0.001%
10	3.260	645	649	651	rBV	157	112	0.01%	0.002%
11	3.308	662	664	668	rBV	207	141	0.01%	0.002%
12	3.366	679	682	685	rVB	111	70	0.01%	0.001%
13	3.392	685	690	692	rBV	192	125	0.01%	0.002%
14	3.415	692	697	699	rBV	200	123	0.01%	0.002%
15	3.662	772	774	777	rVB	165	117	0.01%	0.002%
16	3.691	777	783	785	rBV	54	64	0.01%	0.001%
17	3.781	808	811	812	rBV	129	55	0.00%	0.001%
18	3.865	831	837	842	rBV	159	185	0.02%	0.003%
19	3.903	846	849	852	rVV2	183	117	0.01%	0.002%
20	3.974	868	871	874	rVB	83	54	0.00%	0.001%
21	4.045	891	893	896	rVV	173	107	0.01%	0.002%
22	4.189	925	938	991	rBV	49416	177386	14.48%	2.498%
23	4.472	1023	1026	1032	rBV	209	267	0.02%	0.004%
24	4.517	1037	1040	1042	rBV3	213	111	0.01%	0.002%
25	4.553	1049	1051	1053	rBV	145	76	0.01%	0.001%
26	4.569	1054	1056	1060	rVB2	135	87	0.01%	0.001%
27	4.643	1061	1079	1106	rBV	107559	259278	21.16%	3.651%
28	4.762	1112	1116	1119	rVB2	161	123	0.01%	0.002%
29	4.823	1132	1135	1137	rBV	75	60	0.00%	0.001%
30	4.878	1147	1152	1155	rBV	342	355	0.03%	0.005%
31	4.955	1169	1176	1177	rBV	124	123	0.01%	0.002%
32	4.974	1180	1182	1185	rVV2	293	234	0.02%	0.003%
33	5.000	1188	1190	1193	rVB	142	88	0.01%	0.001%
34	5.042	1199	1203	1208	rVB	136	136	0.01%	0.002%

Data Path : Z:\VOASRV\HPCHEM1\MSVOA_U\DATA\VU122018\
 Data File : VU028830.D
 Acq On : 20 Dec 2018 17:30
 Operator : MD/SY
 Sample : J6419-15ME
 Misc : 5.74g/5mL/100uL/5.0mL/MSVOA_U/MEOH
 ALS Vial : 22 Sample Multiplier: 1

Instrument :
 MSVOA_U
 ClientSampleId :
 BF043ME

Integration Parameters: LSCINT.P

Integrator: RTE
 Smoothing : OFF
 Sampling : 1
 Start Thrs: 0.2
 Stop Thrs : 0

Filtering: 5
 Min Area: 0 % of largest Peak
 Max Peaks: 100
 Peak Location: TOP

If leading or trailing edge < 100 prefer < Baseline drop else tangent >
 Peak separation: 5

Method : Z:\VOASRV\HPCHEM1\MSVOA_U\METHOD\SOMULM122018WMA.M
 Title : VOC Analysis

35	5.070	1208	1212	1214	rBV	140	112	0.01%	0.002%
36	5.167	1239	1242	1246	rBV	103	72	0.01%	0.001%
37	5.199	1250	1252	1254	rBV	157	85	0.01%	0.001%
38	5.331	1270	1293	1318	rBV2	246760	695831	56.79%	9.798%
39	5.559	1361	1364	1365	rBV	162	58	0.00%	0.001%
40	5.611	1374	1380	1390	rBV3	967	1653	0.13%	0.023%
41	5.685	1400	1403	1405	rBV	100	71	0.01%	0.001%
42	5.752	1421	1424	1427	rVB2	169	103	0.01%	0.001%
43	5.813	1439	1443	1444	rBV	195	82	0.01%	0.001%
44	5.881	1449	1464	1497	rBV	249036	513647	41.92%	7.233%
45	6.183	1546	1558	1570	rBV6	1977	3697	0.30%	0.052%
46	6.247	1570	1578	1588	rBV4	1395	2559	0.21%	0.036%
47	6.328	1588	1603	1631	rVB	152141	320290	26.14%	4.510%
48	6.450	1637	1641	1642	rBV	152	97	0.01%	0.001%
49	6.549	1670	1672	1675	rVB	219	101	0.01%	0.001%
50	6.688	1712	1715	1720	rVB	190	123	0.01%	0.002%
51	6.755	1733	1736	1740	rBV	122	113	0.01%	0.002%
52	6.813	1750	1754	1759	rBV	111	136	0.01%	0.002%
53	6.877	1770	1774	1775	rBV	325	224	0.02%	0.003%
54	6.922	1785	1788	1792	rBV	88	58	0.00%	0.001%
55	6.945	1792	1795	1799	rVB	95	71	0.01%	0.001%
56	7.029	1819	1821	1825	rVB	104	62	0.01%	0.001%
57	7.051	1825	1828	1833	rVB	114	85	0.01%	0.001%
58	7.157	1858	1861	1865	rBV	94	83	0.01%	0.001%
59	7.225	1870	1882	1911	rBV	85236	165900	13.54%	2.336%
60	7.347	1918	1920	1921	rBV	263	126	0.01%	0.002%
61	7.395	1932	1935	1938	rBV	85	66	0.01%	0.001%
62	7.437	1945	1948	1952	rBV	70	59	0.00%	0.001%
63	7.459	1952	1955	1957	rBV2	224	145	0.01%	0.002%
64	7.488	1957	1964	1968	rBV	957	1166	0.10%	0.016%
65	7.562	1974	1987	2006	rBV	306441	561073	45.79%	7.901%
66	7.852	2065	2077	2101	rBV	58274	111009	9.06%	1.563%
67	8.093	2149	2152	2155	rVB2	140	83	0.01%	0.001%
68	8.131	2161	2164	2166	rBV2	112	80	0.01%	0.001%
69	8.225	2179	2193	2211	rBV	716026	1225244	100.00%	17.253%
70	8.321	2213	2223	2247	rVB	231200	440191	35.93%	6.198%
71	8.514	2279	2283	2291	rBV3	455	537	0.04%	0.008%

Data Path : Z:\VOASRV\HPCHEM1\MSVOA_U\DATA\VU122018\
 Data File : VU028830.D
 Acq On : 20 Dec 2018 17:30
 Operator : MD/SY
 Sample : J6419-15ME
 Misc : 5.74g/5mL/100uL/5.0mL/MSVOA_U/MEOH
 ALS Vial : 22 Sample Multiplier: 1

Instrument :
 MSVOA_U
 ClientSampleId :
 BF043ME

Integration Parameters: LSCINT.P

Integrator: RTE
 Smoothing : OFF Filtering: 5
 Sampling : 1 Min Area: 0 % of largest Peak
 Start Thrs: 0.2 Max Peaks: 100
 Stop Thrs : 0 Peak Location: TOP

If leading or trailing edge < 100 prefer < Baseline drop else tangent >
 Peak separation: 5

Method : Z:\VOASRV\HPCHEM1\MSVOA_U\METHOD\SOMULM122018WMA.M
 Title : VOC Analysis

72	8.585	2302	2305	2308	rBV	159	115	0.01%	0.002%
73	8.620	2308	2316	2317	rBV	1186	887	0.07%	0.012%
74	8.768	2357	2362	2364	rBV	173	125	0.01%	0.002%
75	8.787	2365	2368	2371	rVB	204	126	0.01%	0.002%
76	8.864	2390	2392	2396	rBV	97	59	0.00%	0.001%
77	8.945	2414	2417	2420	rBV	91	70	0.01%	0.001%
78	9.090	2449	2462	2490	rBV	364216	634259	51.77%	8.931%
79	9.254	2505	2513	2523	rVB	1638	2507	0.20%	0.035%
80	9.382	2543	2553	2562	rBV2	2385	3921	0.32%	0.055%
81	9.443	2568	2572	2574	rBV2	213	150	0.01%	0.002%
82	9.472	2579	2581	2586	rBV	79	57	0.00%	0.001%
83	9.498	2586	2589	2591	rBV	138	103	0.01%	0.001%
84	9.787	2671	2679	2686	rBV2	847	1207	0.10%	0.017%
85	9.948	2725	2729	2733	rVB2	199	156	0.01%	0.002%
86	10.263	2824	2827	2829	rBV	137	92	0.01%	0.001%
87	10.276	2829	2831	2835	rVB	183	78	0.01%	0.001%
88	10.434	2868	2880	2900	rBV	253735	404781	33.04%	5.700%
89	10.588	2925	2928	2930	rBV2	257	215	0.02%	0.003%
90	10.771	2982	2985	2987	rBV	341	234	0.02%	0.003%
91	10.954	3040	3042	3043	rBV	170	57	0.00%	0.001%
92	11.012	3057	3060	3065	rBV2	192	151	0.01%	0.002%
93	11.154	3096	3104	3113	rBV3	879	1384	0.11%	0.019%
94	11.186	3113	3114	3121	rVB2	227	121	0.01%	0.002%
95	11.405	3179	3182	3185	rVB2	224	146	0.01%	0.002%
96	11.485	3195	3207	3228	rBV	394621	617184	50.37%	8.691%
97	11.716	3277	3279	3282	rBV2	293	185	0.02%	0.003%
98	11.861	3311	3324	3346	rBV	336119	537224	43.85%	7.565%
99	12.157	3414	3416	3421	rBV2	244	167	0.01%	0.002%
100	12.475	3506	3515	3516	rBV2	810	969	0.08%	0.014%

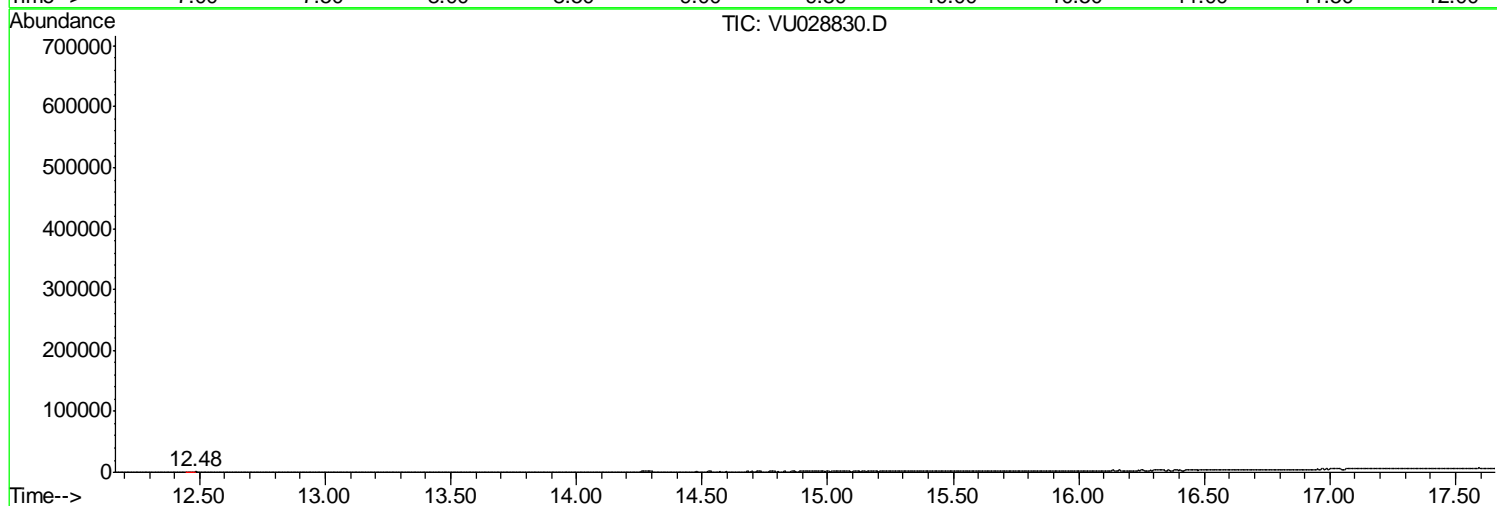
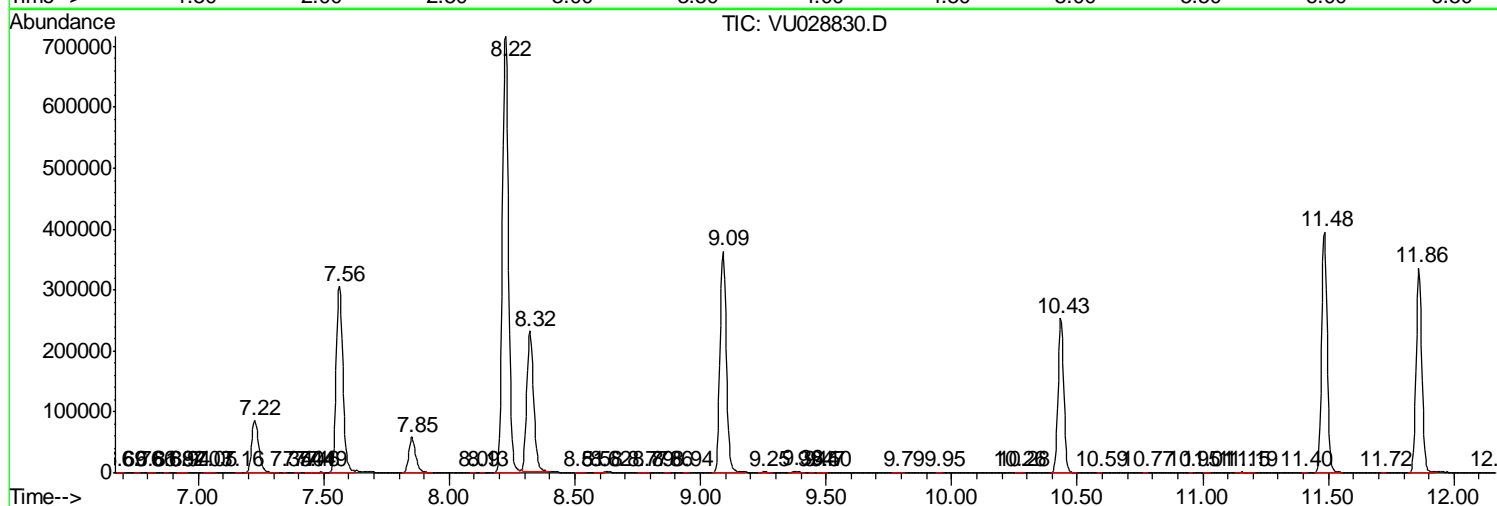
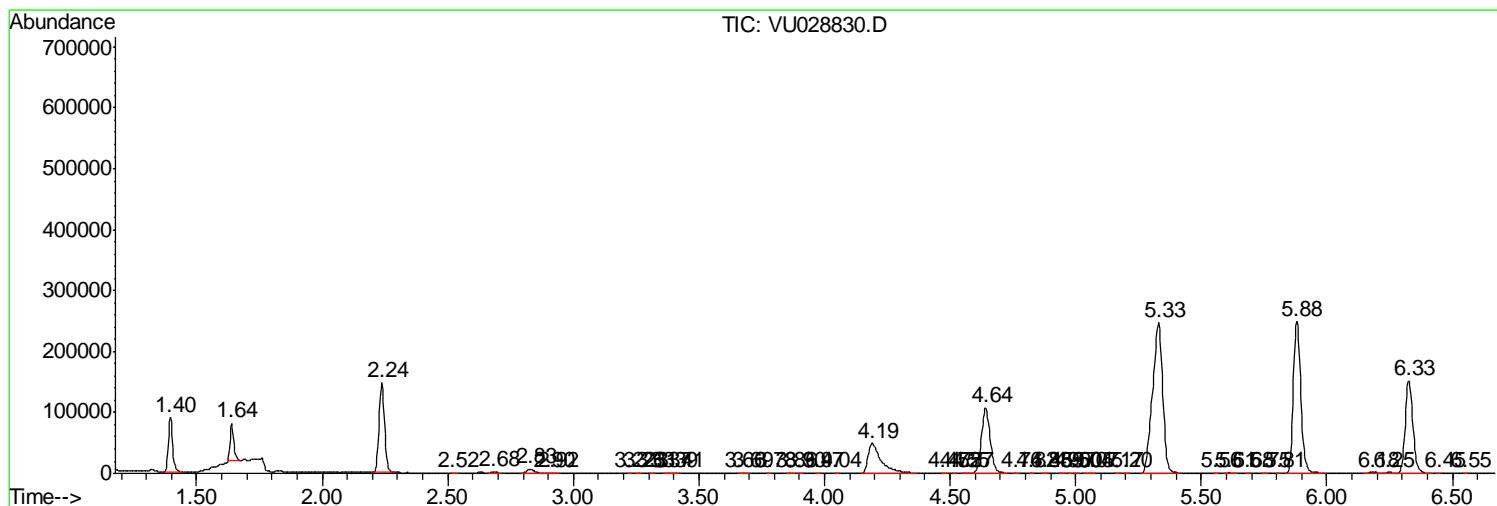
Sum of corrected areas: 7101676

Data Path : Z:\VOASRV\HPCHEM1\MSVOA_U\DATA\VU122018\
 Data File : VU028830.D
 Acq On : 20 Dec 2018 17:30
 Operator : MD/SY
 Sample : J6419-15ME
 Misc : 5.74g/5mL/100uL/5.0mL/MSVOA_U/MEOH
 ALS Vial : 22 Sample Multiplier: 1

Instrument :
 MSVOA_U
Client Sampled :
 BF043ME

Quant Method : Z:\VOASRV\HPCHEM1\MSVOA_U\METHOD\SOMULM122018WMA.M
 Quant Title : VOC Analysis

TIC Library : C:\DATABASE\NIST11.L
 TIC Integration Parameters: LSCINT.P



Data Path : Z:\VOASRV\HPCHEM1\MSVOA_U\DATA\VU122018\
Data File : VU028830.D
Acq On : 20 Dec 2018 17:30
Operator : MD/SY
Sample : J6419-15ME
Misc : 5.74g/5mL/100uL/5.0mL/MSVOA_U/MEOH
ALS Vial : 22 Sample Multiplier: 1

Instrument :
MSVOA_U
ClientSampleId :
BF043ME

Quant Method : Z:\VOASRV\HPCHEM1\MSVOA_U\METHOD\SOMULM122018WMA.M
Quant Title : VOC Analysis

TIC Library : C:\DATABASE\NIST11.L
TIC Integration Parameters: LSCINT.P

No Library Search Compounds Detected

Data Path : Z:\VOASRV\HPCHEM1\MSVOA_U\DATA\VU122018\
Data File : VU028830.D
Acq On : 20 Dec 2018 17:30
Operator : MD/SY
Sample : J6419-15ME
Misc : 5.74g/5mL/100uL/5.0mL/MSVOA_U/MEOH
ALS Vial : 22 Sample Multiplier: 1

Instrument :
MSVOA_U
ClientSampleId :
BF043ME

Quant Method : Z:\VOASRV\HPCHEM1\MSVOA_U\METHOD\SOMULM122018WMA.M
Quant Title : VOC Analysis

TIC Library : C:\DATABASE\NIST11.L
TIC Integration Parameters: LSCINT.P

TIC Top Hit name	RT	EstConc	Units	Response	--Internal Standard--			
					#	RT	Resp	Conc
