

Data Path : Z:\voasrv\HPCHEM1\MSVOA\_U\Data\VU122023\  
 Data File : VU057111.D  
 Acq On : 20 Dec 2023 23:19  
 Operator : MD/SY  
 Sample : 05894-06  
 Misc : 25.0mL/MSVOA\_U/WATER  
 ALS Vial : 36 Sample Multiplier: 1

Instrument :  
 MSVOA\_U  
 ClientSampleId :

Quant Time: Dec 21 05:01:09 2023  
 Quant Method : Z:\voasrv\HPCHEM1\MSVOA\_U\Method\SFAMUTR121123WMA.M  
 Quant Title : TRACE VOA SFAM1.0  
 QLast Update : Thu Dec 21 01:34:13 2023  
 Response via : Initial Calibration

Compound	R.T.	QIon	Response	Conc	Units	Dev(Min)
Internal Standards						
1) 1,4-Difluorobenzene	6.245	114	194501	5.000	ug/L	0.00
28) Chlorobenzene-d5	9.412	117	196059	5.000	ug/L	0.00
58) 1,4-Dichlorobenzene-d4	11.807	152	86959	5.000	ug/L	0.00
System Monitoring Compounds						
4) Vinyl Chloride-d3	1.595	65	53582	3.214	ug/L	0.00
Spiked Amount	5.000	Range 40 - 130	Recovery	=	64.200%	
7) Chloroethane-d5	1.911	69	46747	3.747	ug/L	0.00
Spiked Amount	5.000	Range 65 - 130	Recovery	=	75.000%	
11) 1,1-Dichloroethene-d2	2.563	65	25550	3.582	ug/L	0.00
Spiked Amount	5.000	Range 60 - 125	Recovery	=	71.600%	
20) 2-Butanone-d5	4.624	46	123556	37.527	ug/L	0.00
Spiked Amount	50.000	Range 40 - 130	Recovery	=	75.060%	
24) Chloroform-d	5.055	84	130140	4.122	ug/L	0.00
Spiked Amount	5.000	Range 70 - 125	Recovery	=	82.400%	
26) 1,2-Dichloroethane-d4	5.695	65	63430	4.246	ug/L	0.00
Spiked Amount	5.000	Range 70 - 130	Recovery	=	85.000%	
32) Benzene-d6	5.721	84	231146	3.801	ug/L	0.00
Spiked Amount	5.000	Range 70 - 125	Recovery	=	76.000%	
36) 1,2-Dichloropropane-d6	6.682	67	71704	3.767	ug/L	0.00
Spiked Amount	5.000	Range 60 - 140	Recovery	=	75.400%	
41) Toluene-d8	7.894	98	191171	3.517	ug/L	0.00
Spiked Amount	5.000	Range 70 - 130	Recovery	=	70.400%	
43) trans-1,3-Dichloroprop...	8.174	79	26716	3.619	ug/L	0.00
Spiked Amount	5.000	Range 55 - 130	Recovery	=	72.400%	
46) 2-Hexanone-d5	8.631	63	100310	36.031	ug/L	0.00
Spiked Amount	50.000	Range 45 - 130	Recovery	=	72.060%	
56) 1,1,2,2-Tetrachloroeth...	10.749	84	54173	3.934	ug/L	0.00
Spiked Amount	5.000	Range 65 - 120	Recovery	=	78.600%	
66) 1,2-Dichlorobenzene-d4	12.187	152	70909	4.148	ug/L	0.00
Spiked Amount	5.000	Range 80 - 120	Recovery	=	83.000%	
Target Compounds						
5) Vinyl chloride	1.602	62	10757	0.541	ug/L	97
8) Chloroethane	1.930	64	30294	2.599	ug/L	98
12) 1,1-Dichloroethene	2.573	96	2336	0.148	ug/L #	1
19) 1,1-Dichloroethane	3.859	63	333321	10.823	ug/L	99
22) cis-1,2-Dichloroethene	4.660	96	93693	5.379	ug/L	98
29) 1,1,1-Trichloroethane	5.309	97	224253	7.913	ug/L	98
31) Carbon tetrachloride	5.309	117	26742	1.086	ug/L	99
34) Trichloroethene	6.537	95	88187	4.666	ug/L	99
35) Methylcyclohexane	6.682	83	17669	0.633	ug/L #	20
37) 1,2-Dichloropropane	6.682	63	8079	0.458	ug/L #	91
47) Tetrachloroethene	8.550	164	2523	0.191	ug/L	75
48) 2-Hexanone	8.682	43	3829	0.642	ug/L #	45
49) Dibromochloromethane	8.553	129	2370	0.173	ug/L #	11
51) Chlorobenzene	9.444	112	12363	0.272	ug/L #	88
61) 1,2,3-Trichloropropane	11.804	75	12744	1.365	ug/L #	66
65) 1,4-Dichlorobenzene	11.833	146	5426	0.170	ug/L	99
67) 1,2-Dichlorobenzene	12.209	146	11028	0.372	ug/L	95

Data Path : Z:\voasrv\HPCHEM1\MSVOA\_U\Data\VU122023\  
Data File : VU057111.D  
Acq On : 20 Dec 2023 23:19  
Operator : MD/SY  
Sample : 05894-06  
Misc : 25.0mL/MSVOA\_U/WATER  
ALS Vial : 36 Sample Multiplier: 1

Instrument :  
MSVOA\_U  
ClientSampleId :

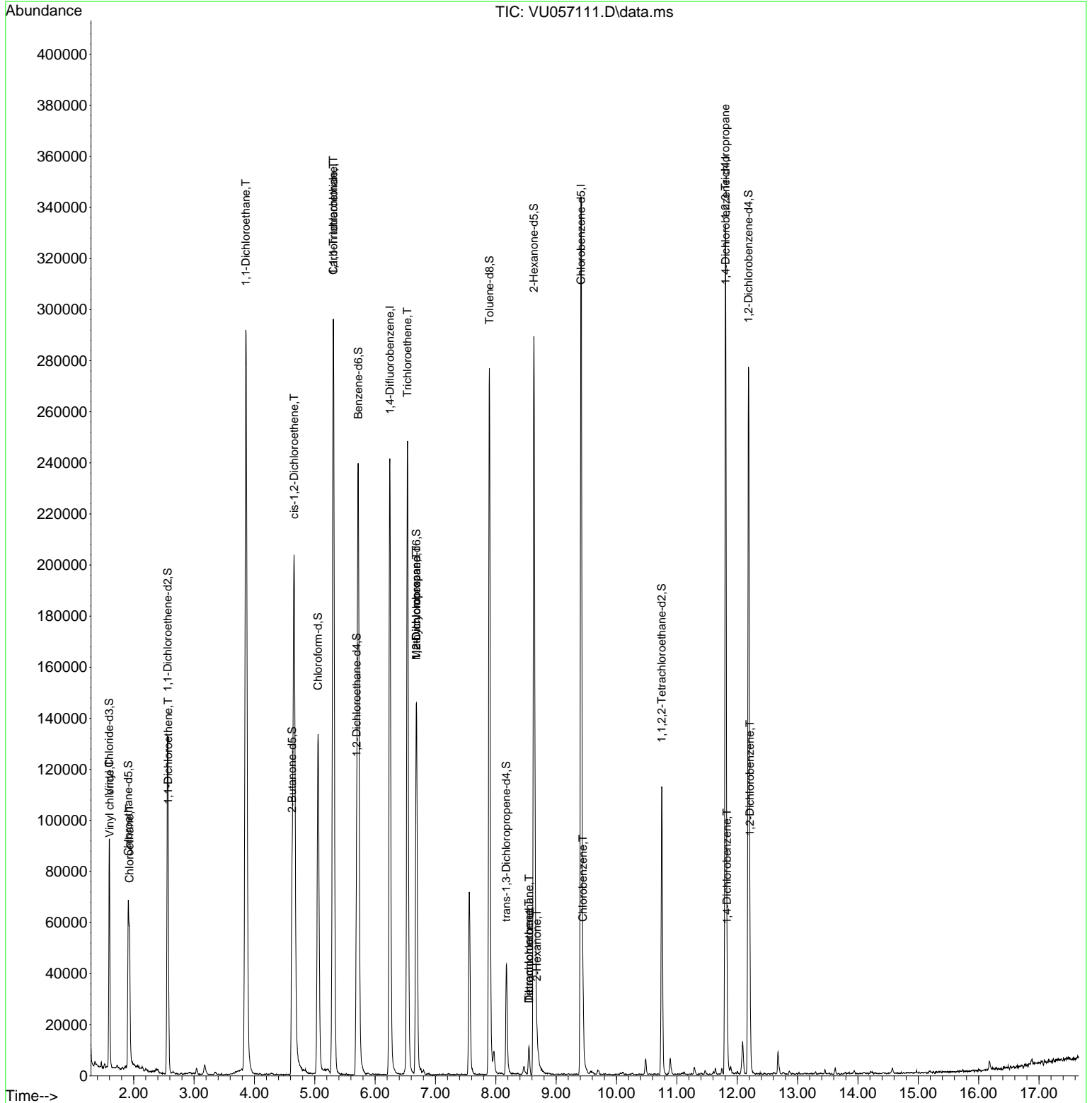
Quant Time: Dec 21 05:01:09 2023  
Quant Method : Z:\voasrv\HPCHEM1\MSVOA\_U\Method\SFAMUTR121123WMA.M  
Quant Title : TRACE VOA SFAM1.0  
QLast Update : Thu Dec 21 01:34:13 2023  
Response via : Initial Calibration

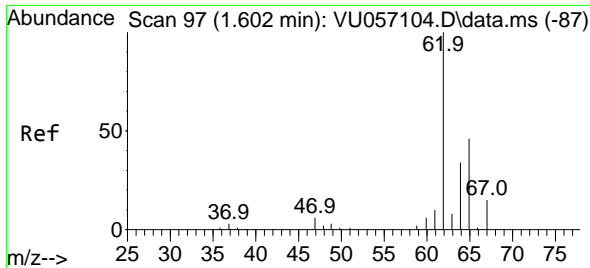
Compound	R.T.	QIon	Response	Conc	Units	Dev(Min)
-----						
(#) = qualifier out of range (m) = manual integration (+) = signals summed						

Data Path : Z:\voasrv\HPCHEM1\MSVOA\_U\Data\VU122023\  
 Data File : VU057111.D  
 Acq On : 20 Dec 2023 23:19  
 Operator : MD/SY  
 Sample : 05894-06  
 Misc : 25.0mL/MSVOA\_U/WATER  
 ALS Vial : 36 Sample Multiplier: 1

Instrument :  
 MSVOA\_U  
 ClientSampleId :

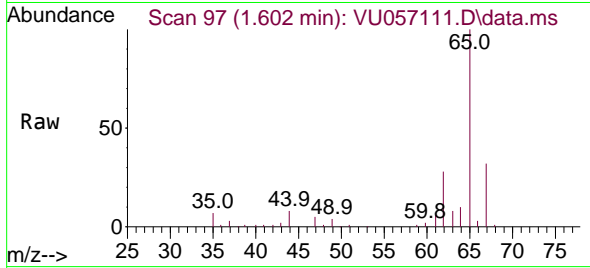
Quant Time: Dec 21 05:01:09 2023  
 Quant Method : Z:\voasrv\HPCHEM1\MSVOA\_U\Method\SFAMUTR121123WMA.M  
 Quant Title : TRACE VOA SFAM1.0  
 QLast Update : Thu Dec 21 01:34:13 2023  
 Response via : Initial Calibration



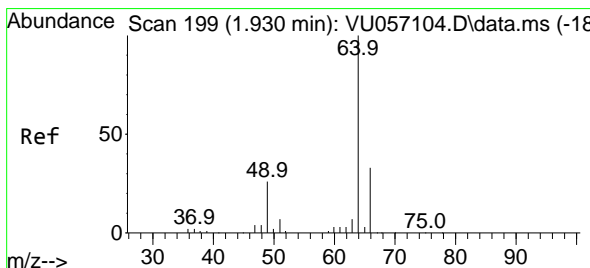
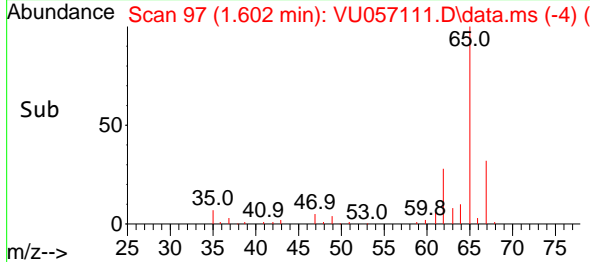
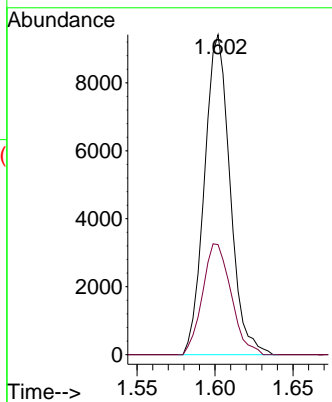


#5  
 Vinyl chloride  
 Concen: 0.541 ug/L  
 RT: 1.602 min Scan# 91  
 Delta R.T. -0.000 min  
 Lab File: VU057111.D  
 Acq: 20 Dec 2023 23:19

Instrument :  
 MSVOA\_U  
 ClientSampleId :

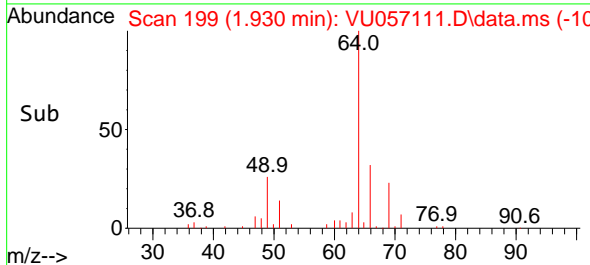
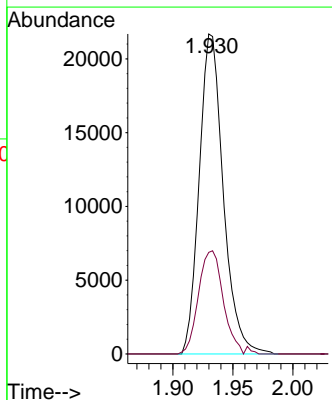
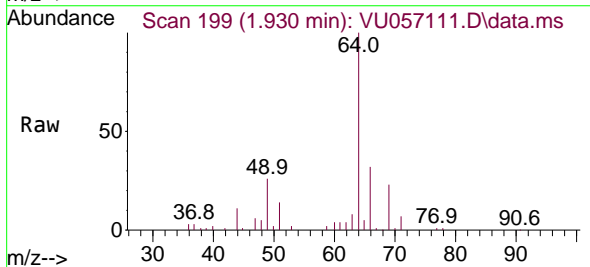


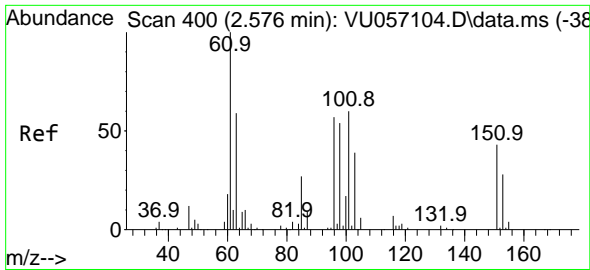
Tgt Ion: 62 Resp: 10757  
 Ion Ratio Lower Upper  
 62 100  
 64 34.4 22.8 42.4



#8  
 Chloroethane  
 Concen: 2.599 ug/L  
 RT: 1.930 min Scan# 199  
 Delta R.T. -0.000 min  
 Lab File: VU057111.D  
 Acq: 20 Dec 2023 23:19

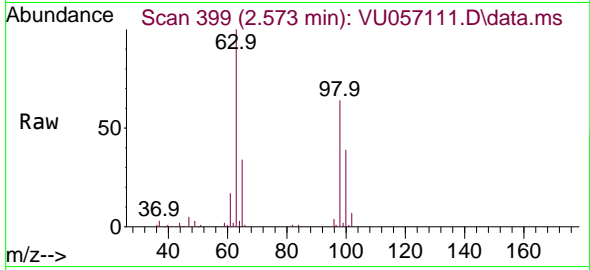
Tgt Ion: 64 Resp: 30294  
 Ion Ratio Lower Upper  
 64 100  
 66 31.7 21.4 39.8



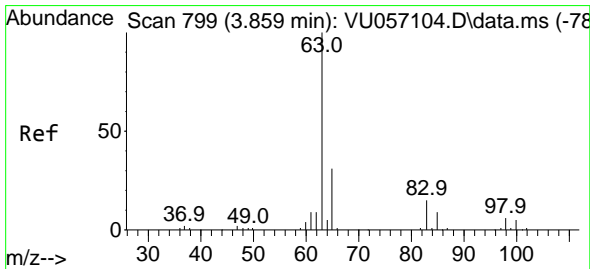
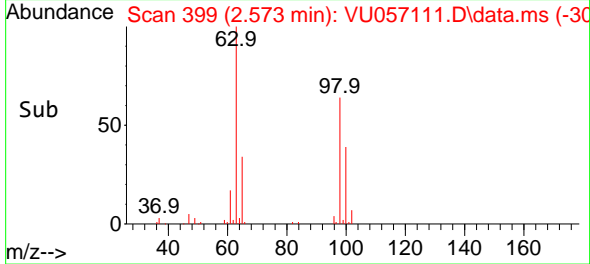
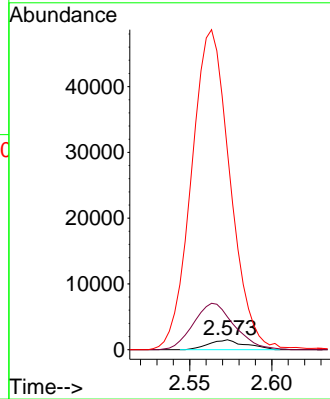


#12  
 1,1-Dichloroethene  
 Concen: 0.148 ug/L  
 RT: 2.573 min Scan# 399  
 Delta R.T. -0.003 min  
 Lab File: VU057111.D  
 Acq: 20 Dec 2023 23:19

Instrument : MSVOA\_U  
 ClientSampleId :

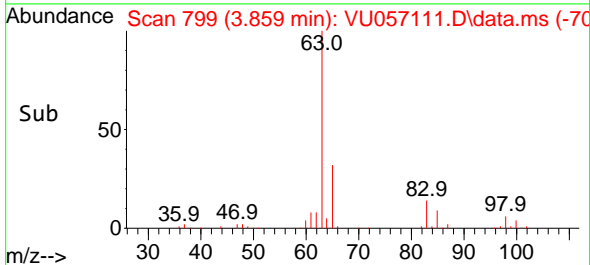
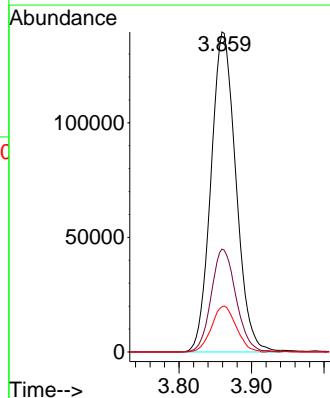
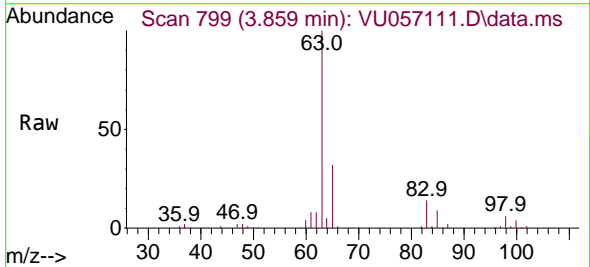


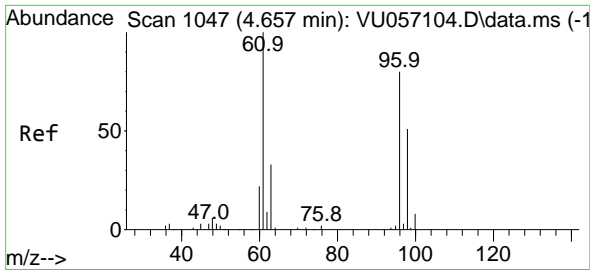
Tgt Ion: 96 Resp: 2336  
 Ion Ratio Lower Upper  
 96 100  
 61 333.3 119.0 221.0#  
 63 2015.7 88.7 164.7#



#19  
 1,1-Dichloroethane  
 Concen: 10.823 ug/L  
 RT: 3.859 min Scan# 799  
 Delta R.T. -0.000 min  
 Lab File: VU057111.D  
 Acq: 20 Dec 2023 23:19

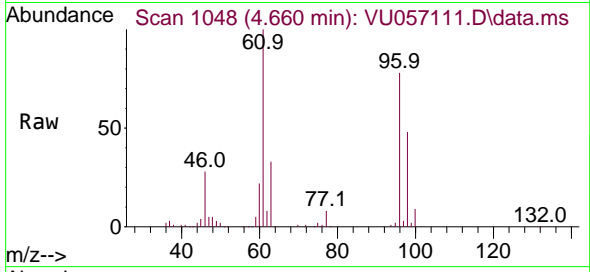
Tgt Ion: 63 Resp: 333321  
 Ion Ratio Lower Upper  
 63 100  
 65 32.1 22.9 42.5  
 83 14.1 10.1 18.9



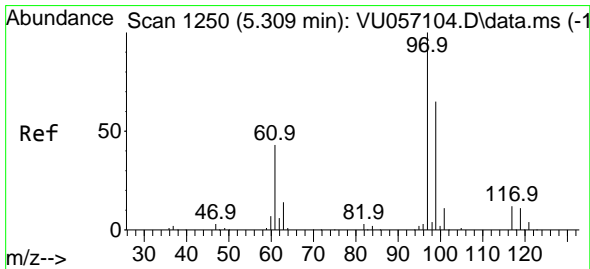
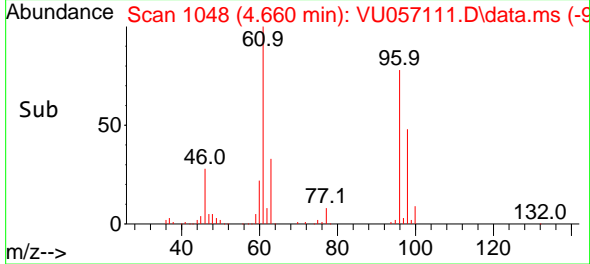
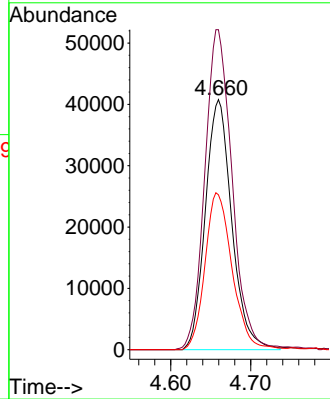


#22  
 cis-1,2-Dichloroethene  
 Concen: 5.379 ug/L  
 RT: 4.660 min Scan# 1048  
 Delta R.T. 0.003 min  
 Lab File: VU057111.D  
 Acq: 20 Dec 2023 23:19

Instrument : MSVOA\_U  
 ClientSampleId :

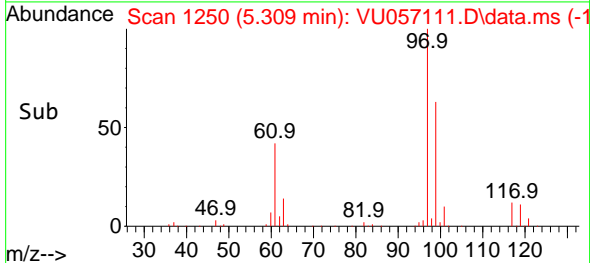
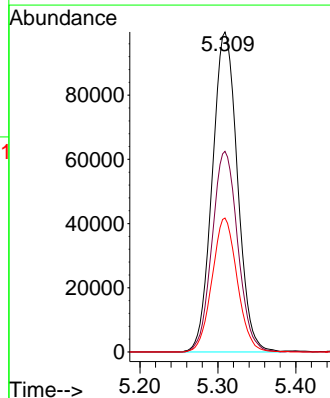
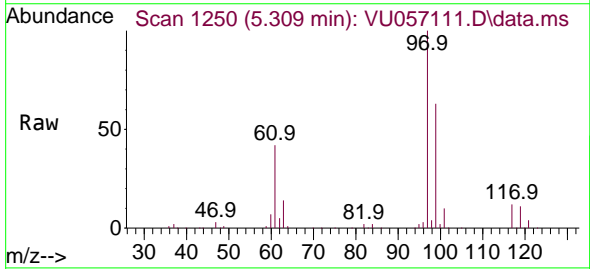


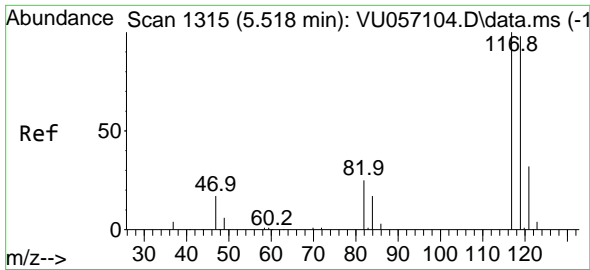
Tgt Ion: 96 Resp: 93693  
 Ion Ratio Lower Upper  
 96 100  
 61 128.0 91.3 169.6  
 98 62.0 44.2 82.0



#29  
 1,1,1-Trichloroethane  
 Concen: 7.913 ug/L  
 RT: 5.309 min Scan# 1250  
 Delta R.T. -0.000 min  
 Lab File: VU057111.D  
 Acq: 20 Dec 2023 23:19

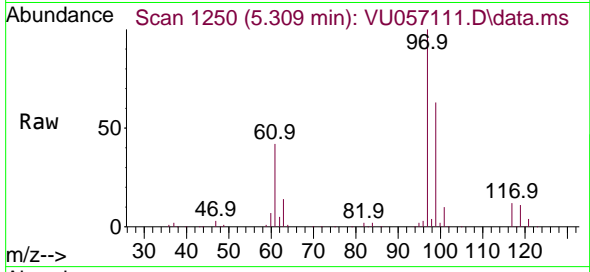
Tgt Ion: 97 Resp: 224253  
 Ion Ratio Lower Upper  
 97 100  
 99 64.0 52.5 78.7  
 61 41.8 34.2 51.2



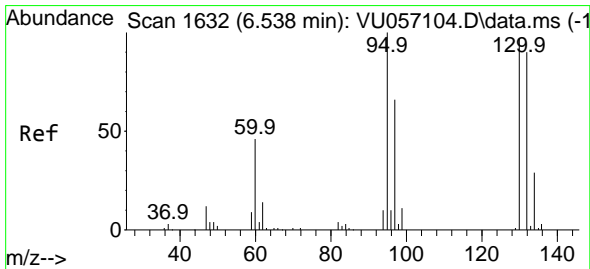
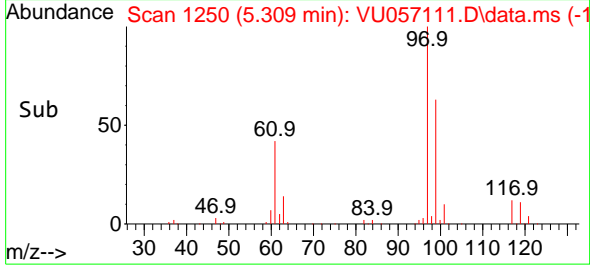
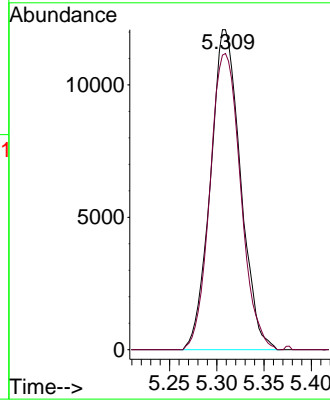


#31  
 Carbon tetrachloride  
 Concen: 1.086 ug/L  
 RT: 5.309 min Scan# 1111  
 Delta R.T. -0.209 min  
 Lab File: VU057111.D  
 Acq: 20 Dec 2023 23:19

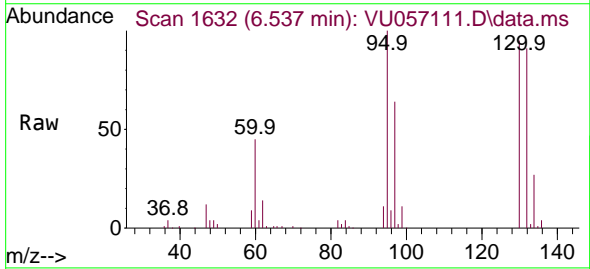
Instrument : MSVOA\_U  
 ClientSampleId :



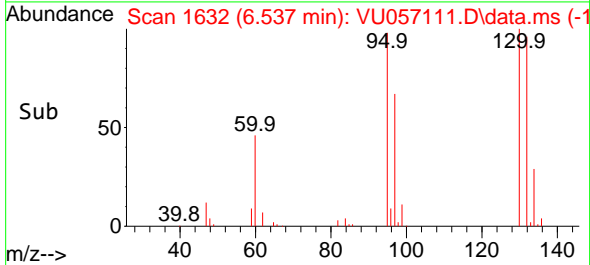
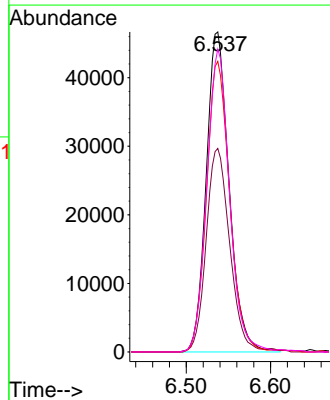
Tgt Ion:117 Resp: 26742  
 Ion Ratio Lower Upper  
 117 100  
 119 94.2 76.2 114.4

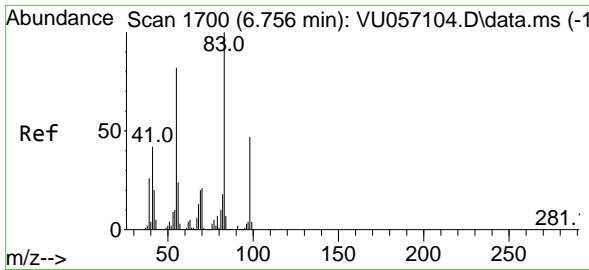


#34  
 Trichloroethene  
 Concen: 4.666 ug/L  
 RT: 6.537 min Scan# 1632  
 Delta R.T. -0.000 min  
 Lab File: VU057111.D  
 Acq: 20 Dec 2023 23:19



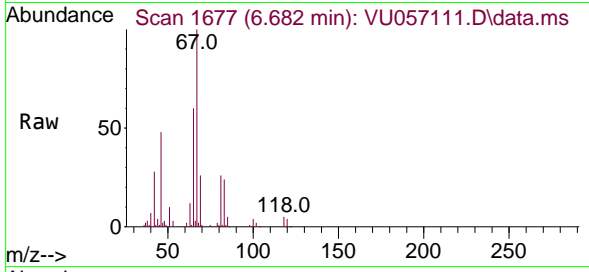
Tgt Ion: 95 Resp: 88187  
 Ion Ratio Lower Upper  
 95 100  
 97 63.6 46.1 85.5  
 132 90.8 63.6 118.0  
 130 94.7 66.4 123.4



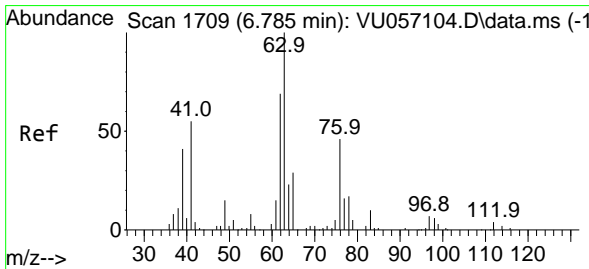
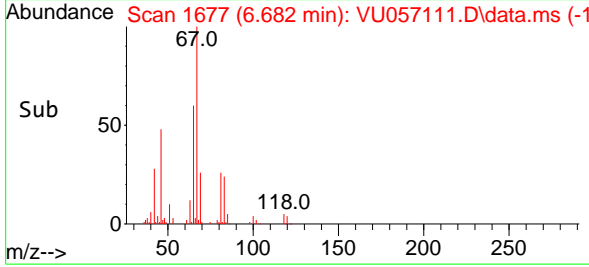
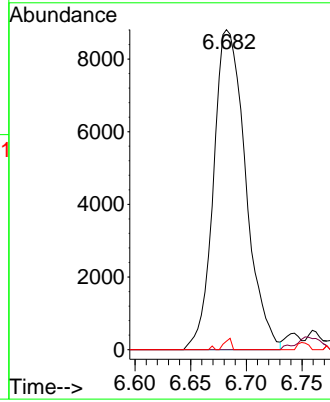


#35  
 Methylcyclohexane  
 Concen: 0.633 ug/L  
 RT: 6.682 min Scan# 1677  
 Delta R.T. -0.074 min  
 Lab File: VU057111.D  
 Acq: 20 Dec 2023 23:19

Instrument : MSVOA\_U  
 ClientSampleId :

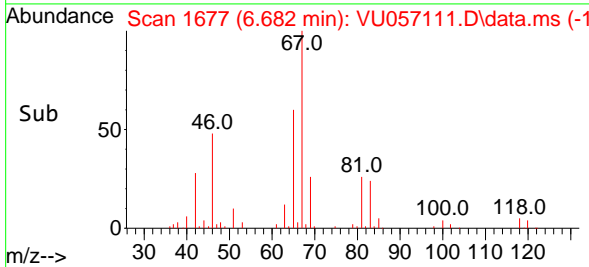
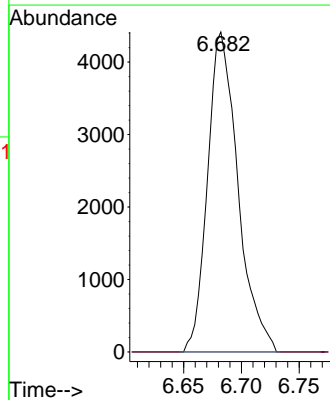
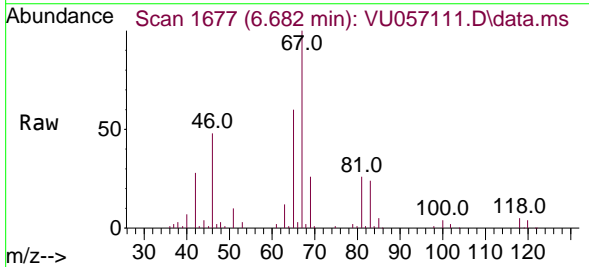


Tgt Ion: 83 Resp: 17669  
 Ion Ratio Lower Upper  
 83 100  
 55 3.0 64.6 97.0#  
 98 1.8 36.1 54.1#

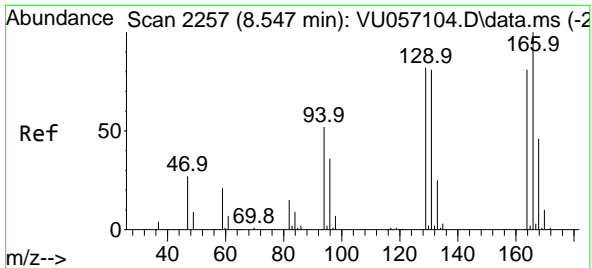


#37  
 1,2-Dichloropropane  
 Concen: 0.458 ug/L  
 RT: 6.682 min Scan# 1677  
 Delta R.T. -0.103 min  
 Lab File: VU057111.D  
 Acq: 20 Dec 2023 23:19

Tgt Ion: 63 Resp: 8079  
 Ion Ratio Lower Upper  
 63 100  
 112 1.0 3.3 4.9#

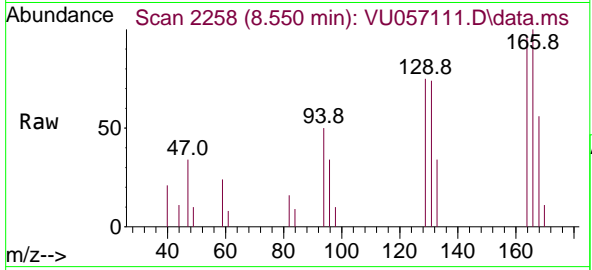






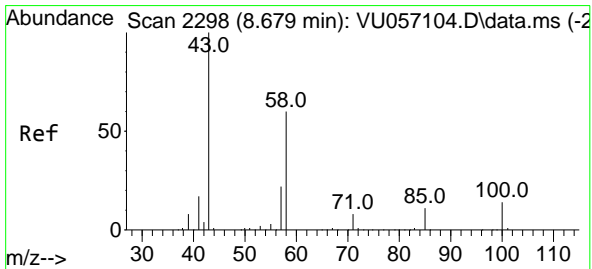
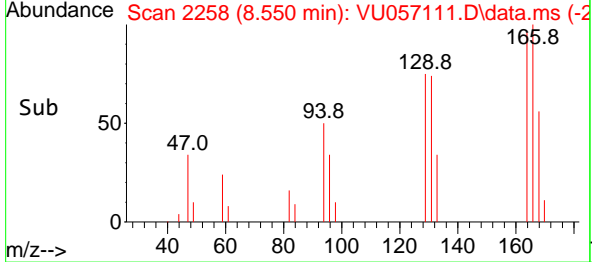
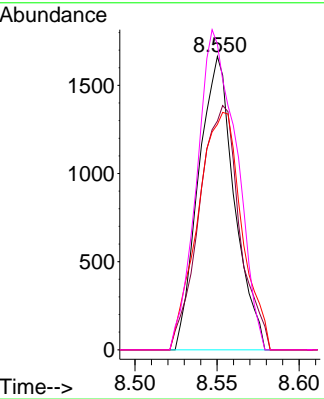
#47  
 Tetrachloroethene  
 Concen: 0.191 ug/L  
 RT: 8.550 min Scan# 211  
 Delta R.T. 0.003 min  
 Lab File: VU057111.D  
 Acq: 20 Dec 2023 23:19

Instrument :  
 MSVOA\_U  
 ClientSampleId :

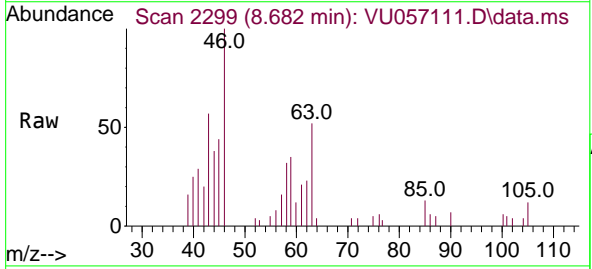


Tgt Ion:164 Resp: 2523

Ion	Ratio	Lower	Upper
164	100		
129	78.0	73.4	136.4
131	76.9	71.5	132.9
166	104.1	92.7	172.1

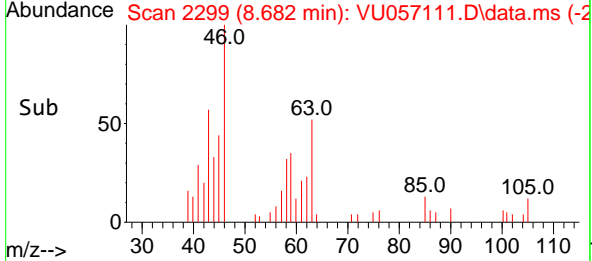
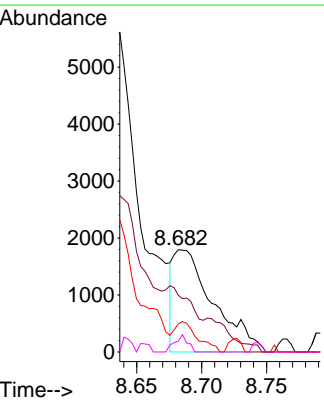


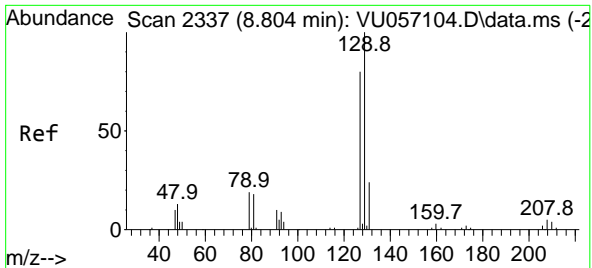
#48  
 2-Hexanone  
 Concen: 0.642 ug/L  
 RT: 8.682 min Scan# 2299  
 Delta R.T. 0.003 min  
 Lab File: VU057111.D  
 Acq: 20 Dec 2023 23:19



Tgt Ion: 43 Resp: 3829

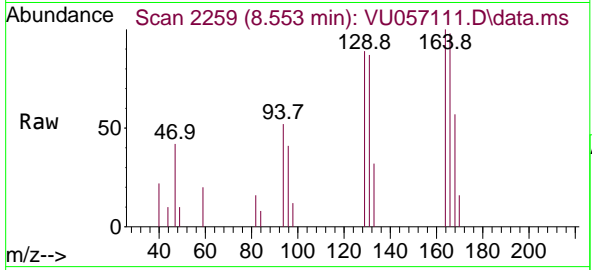
Ion	Ratio	Lower	Upper
43	100		
58	0.0	47.5	71.3#
57	16.9	17.0	25.4#
100	5.4	9.8	14.8#



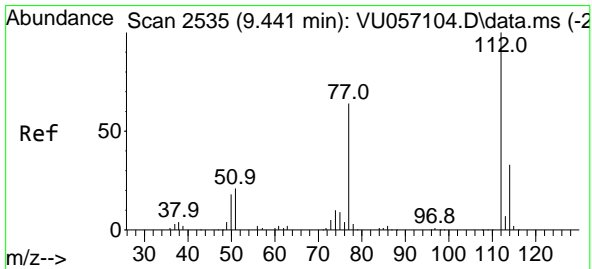
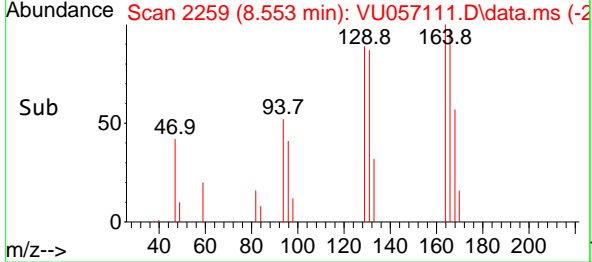
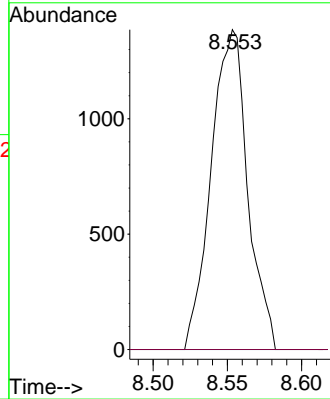


#49  
 Dibromochloromethane  
 Concen: 0.173 ug/L  
 RT: 8.553 min Scan# 211  
 Delta R.T. -0.251 min  
 Lab File: VU057111.D  
 Acq: 20 Dec 2023 23:19

Instrument :  
 MSVOA\_U  
 ClientSampleId :

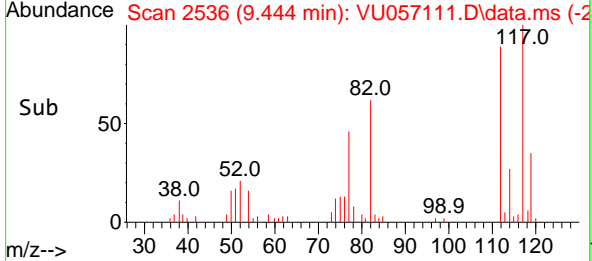
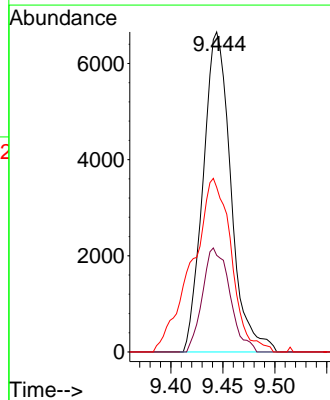
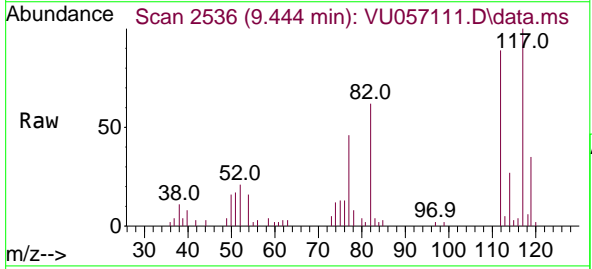


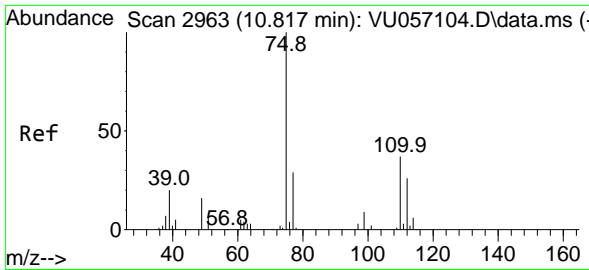
Tgt Ion:129 Resp: 2370  
 Ion Ratio Lower Upper  
 129 100  
 127 0.0 53.9 100.1#



#51  
 Chlorobenzene  
 Concen: 0.272 ug/L  
 RT: 9.444 min Scan# 2536  
 Delta R.T. 0.003 min  
 Lab File: VU057111.D  
 Acq: 20 Dec 2023 23:19

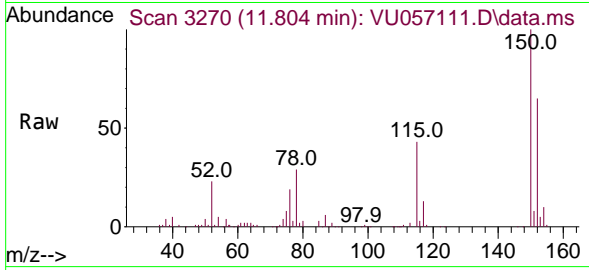
Tgt Ion:112 Resp: 12363  
 Ion Ratio Lower Upper  
 112 100  
 114 30.2 21.9 40.7  
 77 51.5 51.6 77.4#



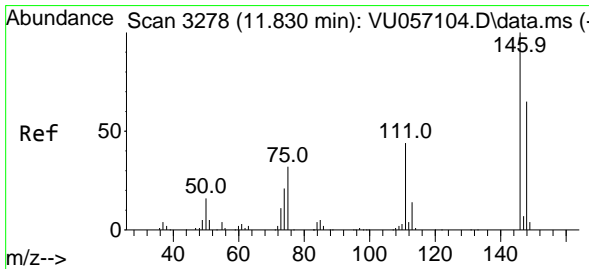
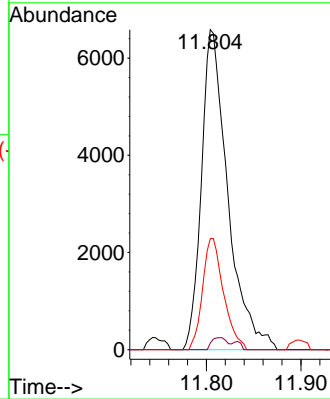
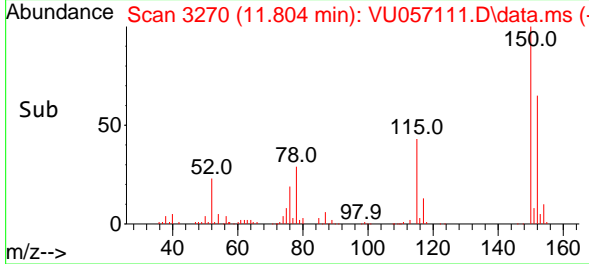


#61  
 1,2,3-Trichloropropane  
 Concen: 1.365 ug/L  
 RT: 11.804 min Scan# 31  
 Delta R.T. 0.987 min  
 Lab File: VU057111.D  
 Acq: 20 Dec 2023 23:19

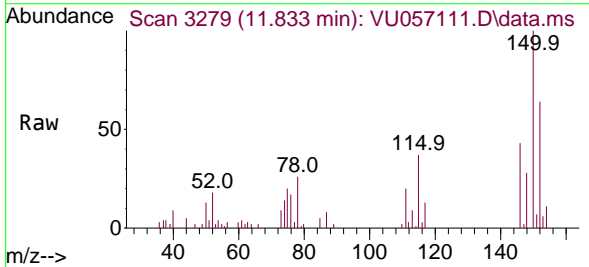
Instrument : MSVOA\_U  
 ClientSampleId :



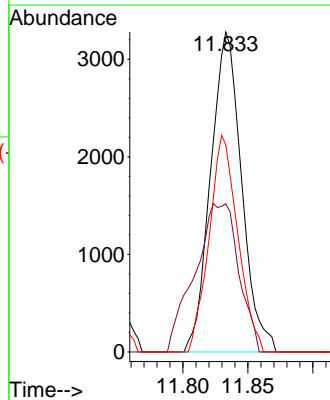
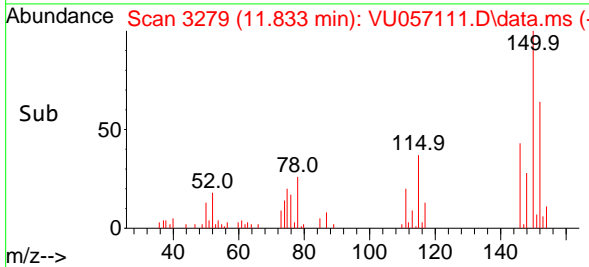
Tgt Ion: 75 Resp: 12744  
 Ion Ratio Lower Upper  
 75 100  
 110 2.3 28.4 42.6#  
 77 27.6 26.3 39.5

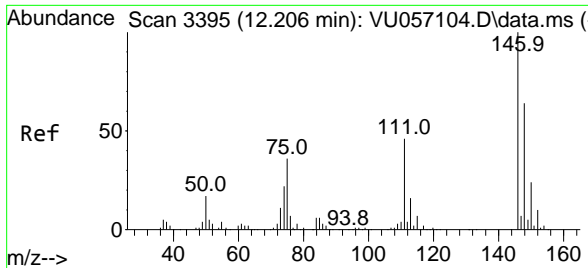


#65  
 1,4-Dichlorobenzene  
 Concen: 0.170 ug/L  
 RT: 11.833 min Scan# 3279  
 Delta R.T. 0.003 min  
 Lab File: VU057111.D  
 Acq: 20 Dec 2023 23:19



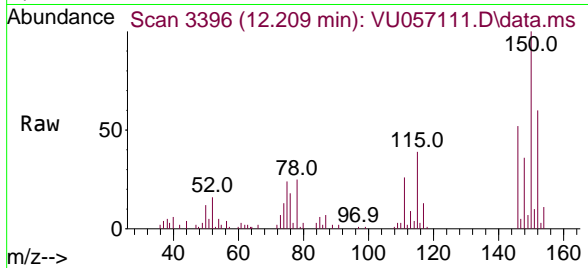
Tgt Ion: 146 Resp: 5426  
 Ion Ratio Lower Upper  
 146 100  
 111 46.3 31.2 58.0  
 148 64.7 45.6 84.8





#67  
 1,2-Dichlorobenzene  
 Concen: 0.372 ug/L  
 RT: 12.209 min Scan# 31  
 Delta R.T. 0.003 min  
 Lab File: VU057111.D  
 Acq: 20 Dec 2023 23:19

Instrument :  
 MSVOA\_U  
 ClientSampleId :



Tgt Ion:146 Resp: 11028

Ion	Ratio	Lower	Upper
146	100		
111	50.6	36.9	55.3
148	68.8	53.0	79.4

