

Data Path : Z:\voasrv\HPCHEM1\MSVOA_U\Data\VU122123\
 Data File : VU057147.D
 Acq On : 21 Dec 2023 20:26
 Operator : MD/SY
 Sample : 05894-08
 Misc : 25.0mL/MSVOA_U/WATER
 ALS Vial : 23 Sample Multiplier: 1

Instrument :
 MSVOA_U
 ClientSampleId :

Quant Time: Dec 21 23:33:44 2023
 Quant Method : Z:\voasrv\HPCHEM1\MSVOA_U\Method\SFAMUTR122123WMA.M
 Quant Title : TRACE VOA SFAM1.0
 QLast Update : Thu Dec 21 23:30:13 2023
 Response via : Initial Calibration

Compound	R.T.	QIon	Response	Conc	Units	Dev(Min)

Internal Standards						
1) 1,4-Difluorobenzene	6.245	114	152502	5.000	ug/L	0.00
28) Chlorobenzene-d5	9.412	117	152942	5.000	ug/L	0.00
58) 1,4-Dichlorobenzene-d4	11.807	152	65448	5.000	ug/L	0.00
System Monitoring Compounds						
4) Vinyl Chloride-d3	1.599	65	80269	5.507	ug/L	0.00
Spiked Amount	5.000	Range 40 - 130	Recovery	=	110.200%	
7) Chloroethane-d5	1.914	69	68014	5.669	ug/L	0.00
Spiked Amount	5.000	Range 65 - 130	Recovery	=	113.400%	
11) 1,1-Dichloroethene-d2	2.563	65	34276	5.427	ug/L	0.00
Spiked Amount	5.000	Range 60 - 125	Recovery	=	108.600%	
20) 2-Butanone-d5	4.624	46	134775	58.890	ug/L	0.00
Spiked Amount	50.000	Range 40 - 130	Recovery	=	117.780%	
24) Chloroform-d	5.055	84	150134	5.334	ug/L	0.00
Spiked Amount	5.000	Range 70 - 125	Recovery	=	106.600%	
26) 1,2-Dichloroethane-d4	5.695	65	75575	5.633	ug/L	0.00
Spiked Amount	5.000	Range 70 - 130	Recovery	=	112.600%	
32) Benzene-d6	5.721	84	276025	5.262	ug/L	0.00
Spiked Amount	5.000	Range 70 - 125	Recovery	=	105.200%	
36) 1,2-Dichloropropane-d6	6.685	67	80663	5.404	ug/L	0.00
Spiked Amount	5.000	Range 60 - 140	Recovery	=	108.000%	
41) Toluene-d8	7.894	98	234569	4.898	ug/L	0.00
Spiked Amount	5.000	Range 70 - 130	Recovery	=	98.000%	
43) trans-1,3-Dichloroprop...	8.174	79	31521	5.073	ug/L	0.00
Spiked Amount	5.000	Range 55 - 130	Recovery	=	101.400%	
46) 2-Hexanone-d5	8.627	63	115752	54.710	ug/L	-0.03
Spiked Amount	50.000	Range 45 - 130	Recovery	=	109.420%	
56) 1,1,2,2-Tetrachloroeth...	10.750	84	59421	5.594	ug/L	0.00
Spiked Amount	5.000	Range 65 - 120	Recovery	=	111.800%	
66) 1,2-Dichlorobenzene-d4	12.187	152	82456	5.855	ug/L	0.00
Spiked Amount	5.000	Range 80 - 120	Recovery	=	117.000%	

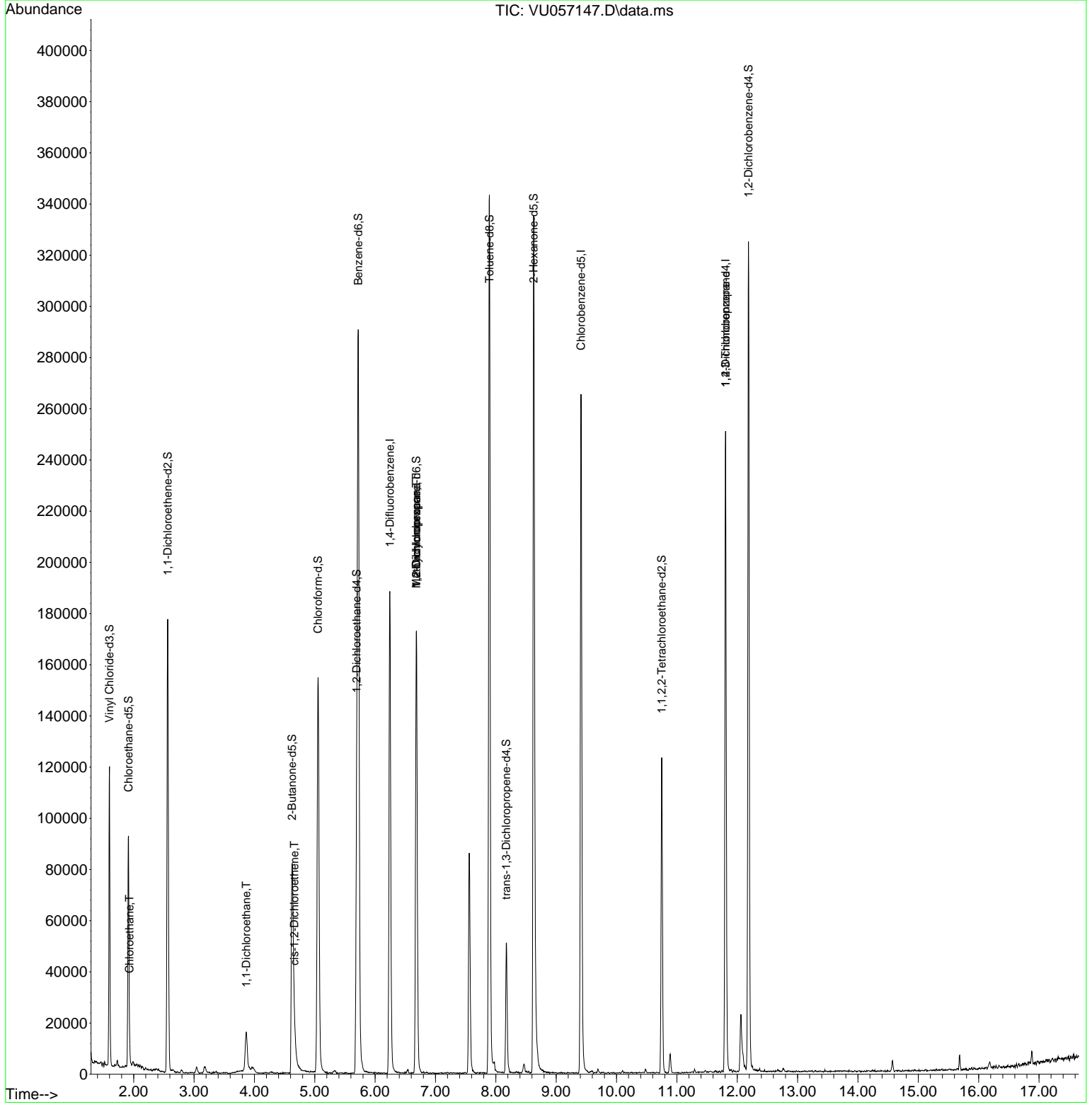
Target Compounds						Qvalue
8) Chloroethane	1.930	64	1803	0.213	ug/L #	73
19) 1,1-Dichloroethane	3.866	63	18009	0.816	ug/L	99
22) cis-1,2-Dichloroethene	4.663	96	1402	0.115	ug/L	94
35) Methylcyclohexane	6.682	83	20151	1.080	ug/L #	19
37) 1,2-Dichloropropane	6.682	63	9943	0.824	ug/L #	88
61) 1,2,3-Trichloropropane	11.807	75	8376	1.374	ug/L #	65

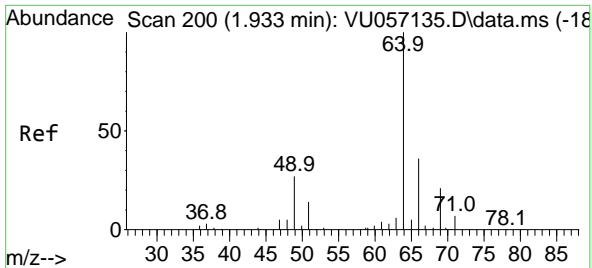
(#) = qualifier out of range (m) = manual integration (+) = signals summed

Data Path : Z:\voasrv\HPCHEM1\MSVOA_U\Data\VU122123\
 Data File : VU057147.D
 Acq On : 21 Dec 2023 20:26
 Operator : MD/SY
 Sample : 05894-08
 Misc : 25.0mL/MSVOA_U/WATER
 ALS Vial : 23 Sample Multiplier: 1

Instrument :
 MSVOA_U
 ClientSampleId :

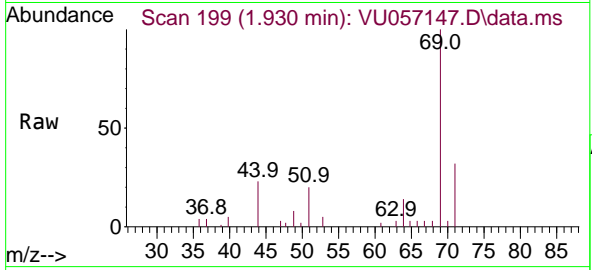
Quant Time: Dec 21 23:33:44 2023
 Quant Method : Z:\voasrv\HPCHEM1\MSVOA_U\Method\SFAMUTR122123WMA.M
 Quant Title : TRACE VOA SFAM1.0
 QLast Update : Thu Dec 21 23:30:13 2023
 Response via : Initial Calibration



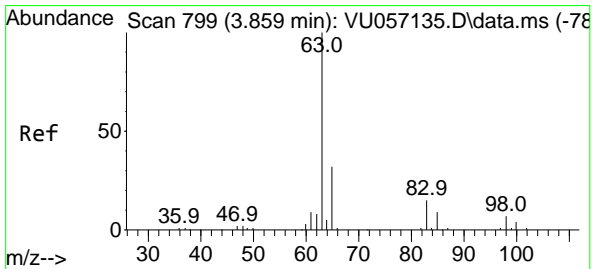
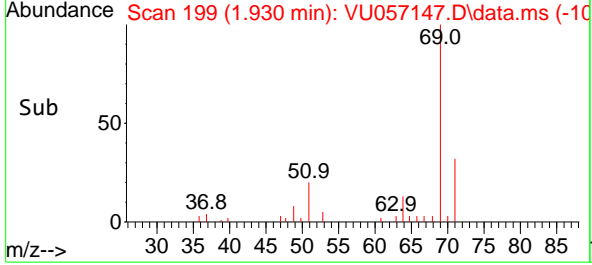
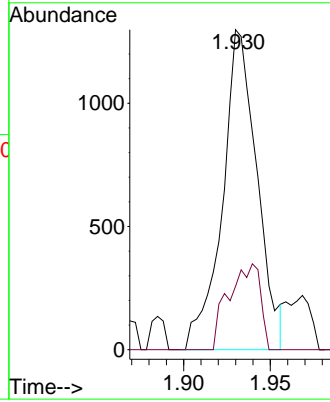


#8
 Chloroethane
 Concen: 0.213 ug/L
 RT: 1.930 min Scan# 199
 Delta R.T. -0.003 min
 Lab File: VU057147.D
 Acq: 21 Dec 2023 20:26

Instrument : MSVOA_U
 ClientSampleId :

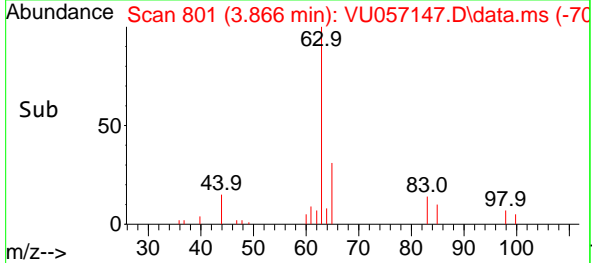
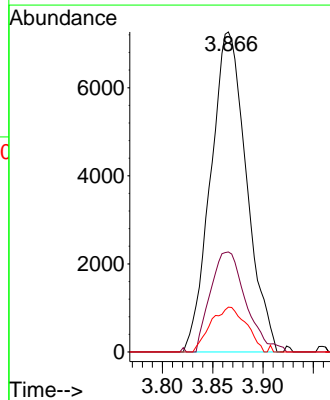
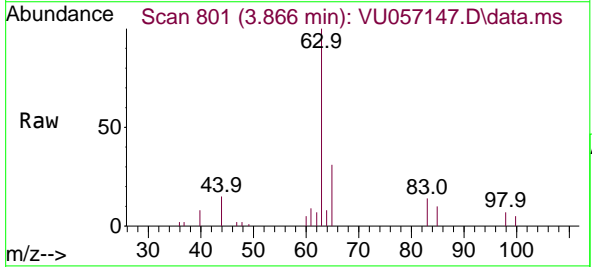


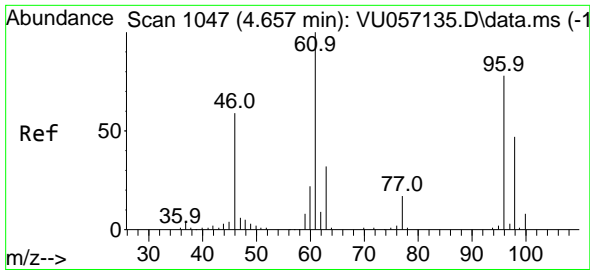
Tgt Ion: 64 Resp: 1803
 Ion Ratio Lower Upper
 64 100
 66 16.1 21.6 40.2#



#19
 1,1-Dichloroethane
 Concen: 0.816 ug/L
 RT: 3.866 min Scan# 801
 Delta R.T. 0.006 min
 Lab File: VU057147.D
 Acq: 21 Dec 2023 20:26

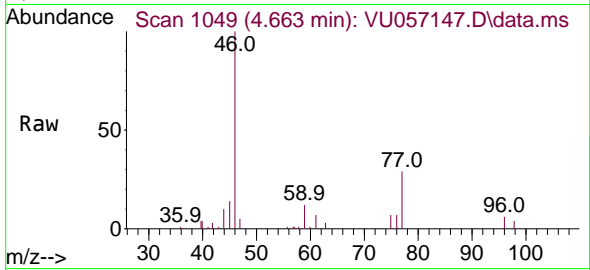
Tgt Ion: 63 Resp: 18009
 Ion Ratio Lower Upper
 63 100
 65 31.2 21.6 40.2
 83 14.0 10.2 19.0



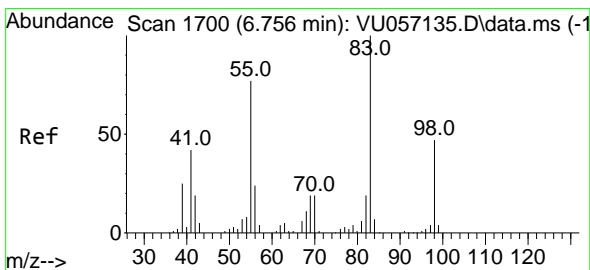
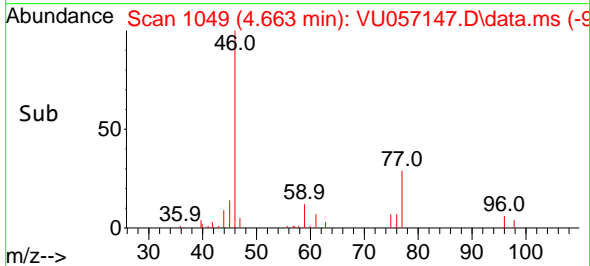
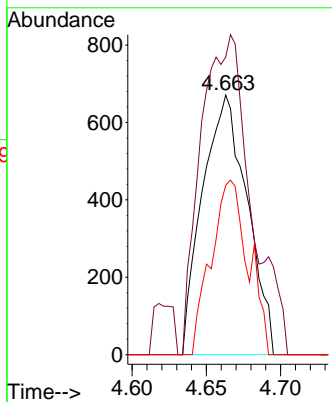


#22
 cis-1,2-Dichloroethene
 Concen: 0.115 ug/L
 RT: 4.663 min Scan# 1049
 Delta R.T. 0.006 min
 Lab File: VU057147.D
 Acq: 21 Dec 2023 20:26

Instrument :
 MSVOA_U
 ClientSampleId :

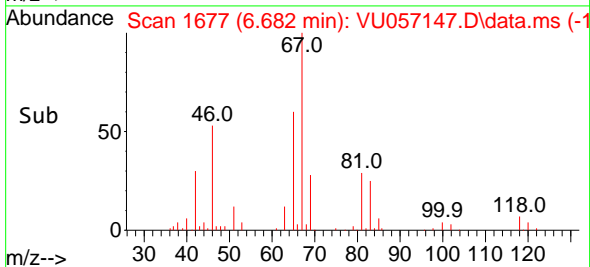
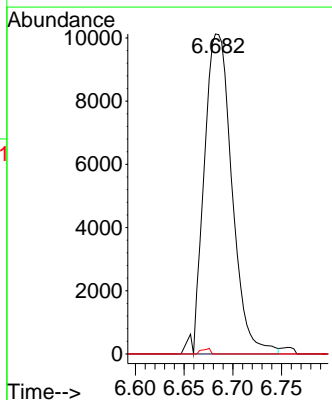
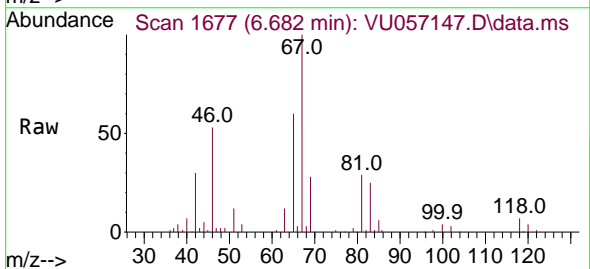


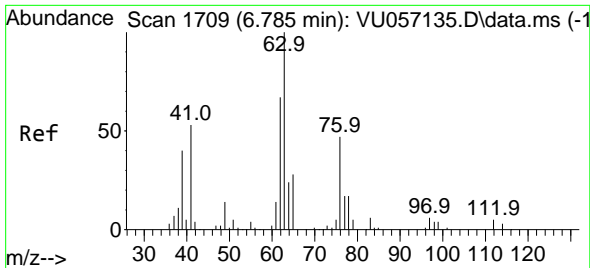
Tgt Ion: 96 Resp: 1402
 Ion Ratio Lower Upper
 96 100
 61 114.6 86.8 161.2
 98 65.3 45.5 84.5



#35
 Methylcyclohexane
 Concen: 1.080 ug/L
 RT: 6.682 min Scan# 1677
 Delta R.T. -0.074 min
 Lab File: VU057147.D
 Acq: 21 Dec 2023 20:26

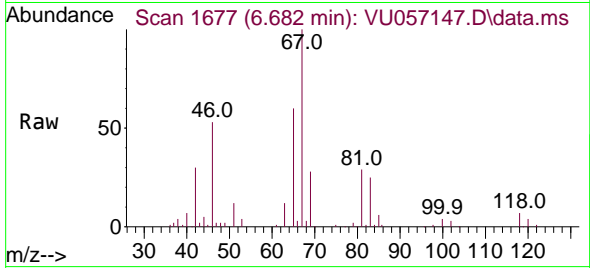
Tgt Ion: 83 Resp: 20151
 Ion Ratio Lower Upper
 83 100
 55 0.0 61.3 91.9#
 98 0.5 36.6 55.0#



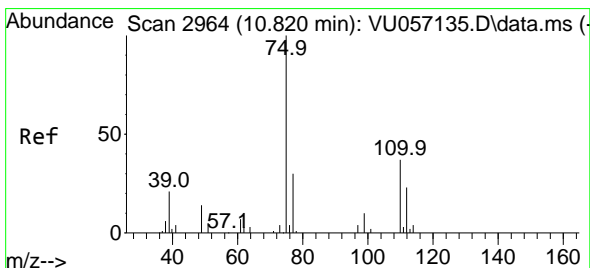
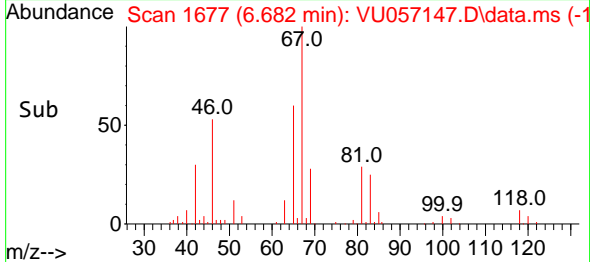
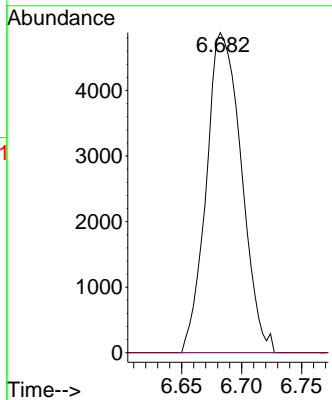


#37
 1,2-Dichloropropane
 Concen: 0.824 ug/L
 RT: 6.682 min Scan# 1100
 Delta R.T. -0.103 min
 Lab File: VU057147.D
 Acq: 21 Dec 2023 20:26

Instrument : MSVOA_U
 ClientSampleId :



Tgt Ion: 63 Resp: 9943
 Ion Ratio Lower Upper
 63 100
 112 0.0 3.1 4.7#



#61
 1,2,3-Trichloropropane
 Concen: 1.374 ug/L
 RT: 11.807 min Scan# 3271
 Delta R.T. 0.987 min
 Lab File: VU057147.D
 Acq: 21 Dec 2023 20:26

Tgt Ion: 75 Resp: 8376
 Ion Ratio Lower Upper
 75 100
 110 0.8 31.2 46.8#
 77 31.5 25.5 38.3

