

Data Path : Z:\voasrv\HPCHEM1\MSVOA\_U\Data\VU122123\  
 Data File : VU057149.D  
 Acq On : 21 Dec 2023 21:14  
 Operator : MD/SY  
 Sample : 05894-11  
 Misc : 25.0mL/MSVOA\_U/WATER  
 ALS Vial : 25 Sample Multiplier: 1

**Instrument :**  
 MSVOA\_U  
**ClientSampleId :**  
 BH3L7

Quant Time: Dec 21 23:34:16 2023  
 Quant Method : Z:\voasrv\HPCHEM1\MSVOA\_U\Method\SFAMUTR122123WMA.M  
 Quant Title : TRACE VOA SFAM1.0  
 QLast Update : Thu Dec 21 23:30:13 2023  
 Response via : Initial Calibration

Compound	R.T.	QIon	Response	Conc	Units	Dev(Min)
Internal Standards						
1) 1,4-Difluorobenzene	6.245	114	163368	5.000	ug/L	0.00
28) Chlorobenzene-d5	9.412	117	160496	5.000	ug/L	0.00
58) 1,4-Dichlorobenzene-d4	11.807	152	72177	5.000	ug/L	0.00

System Monitoring Compounds						
4) Vinyl Chloride-d3	1.599	65	77377	4.955	ug/L	0.00
Spiked Amount	5.000	Range 40 - 130	Recovery	=	99.200%	
7) Chloroethane-d5	1.914	69	65739	5.115	ug/L	0.00
Spiked Amount	5.000	Range 65 - 130	Recovery	=	102.200%	
11) 1,1-Dichloroethene-d2	2.563	65	32588	4.817	ug/L	0.00
Spiked Amount	5.000	Range 60 - 125	Recovery	=	96.400%	
20) 2-Butanone-d5	4.624	46	139852	57.044	ug/L	0.00
Spiked Amount	50.000	Range 40 - 130	Recovery	=	114.080%	
24) Chloroform-d	5.055	84	149059	4.943	ug/L	0.00
Spiked Amount	5.000	Range 70 - 125	Recovery	=	98.800%	
26) 1,2-Dichloroethane-d4	5.695	65	75805	5.275	ug/L	0.00
Spiked Amount	5.000	Range 70 - 130	Recovery	=	105.400%	
32) Benzene-d6	5.721	84	270669	4.917	ug/L	0.00
Spiked Amount	5.000	Range 70 - 125	Recovery	=	98.400%	
36) 1,2-Dichloropropane-d6	6.685	67	79625	5.083	ug/L	0.00
Spiked Amount	5.000	Range 60 - 140	Recovery	=	101.600%	
41) Toluene-d8	7.894	98	233419	4.644	ug/L	0.00
Spiked Amount	5.000	Range 70 - 130	Recovery	=	92.800%	
43) trans-1,3-Dichloroprop...	8.177	79	30442	4.668	ug/L	0.00
Spiked Amount	5.000	Range 55 - 130	Recovery	=	93.400%	
46) 2-Hexanone-d5	8.627	63	115887	52.196	ug/L	-0.03
Spiked Amount	50.000	Range 45 - 130	Recovery	=	104.400%	
56) 1,1,2,2-Tetrachloroeth...	10.749	84	58221	5.223	ug/L	0.00
Spiked Amount	5.000	Range 65 - 120	Recovery	=	104.400%	
66) 1,2-Dichlorobenzene-d4	12.187	152	80996	5.215	ug/L	0.00
Spiked Amount	5.000	Range 80 - 120	Recovery	=	104.400%	

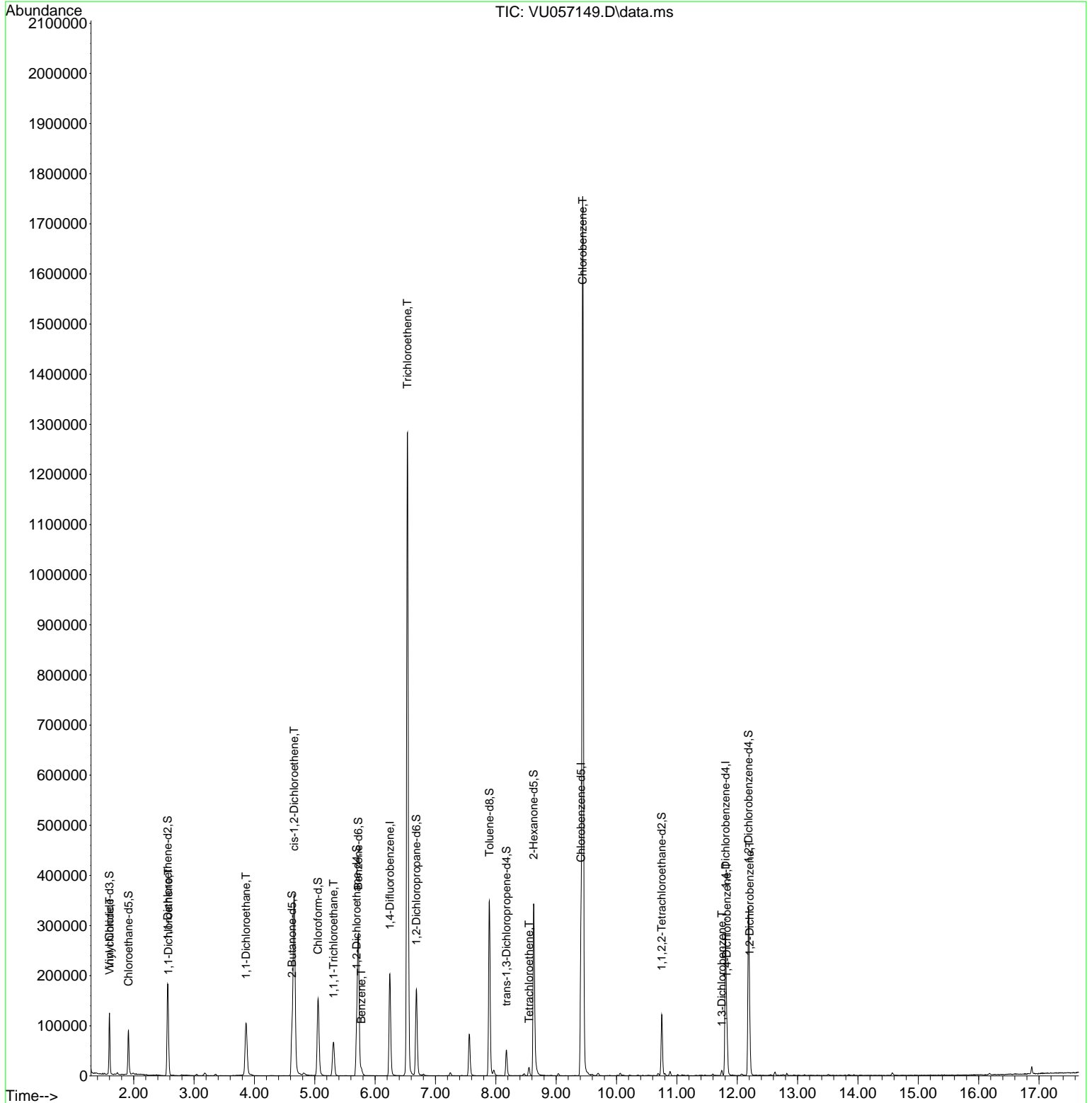
Target Compounds	Qvalue					
5) Vinyl chloride	1.602	62	11384	0.797	ug/L	98
12) 1,1-Dichloroethene	2.576	96	8792	0.720	ug/L #	1
19) 1,1-Dichloroethane	3.862	63	118620	5.018	ug/L	100
22) cis-1,2-Dichloroethene	4.660	96	185061	14.109	ug/L	99
29) 1,1,1-Trichloroethane	5.312	97	52056	2.041	ug/L	99
33) Benzene	5.772	78	11099	0.218	ug/L	100
34) Trichloroethene	6.537	95	450483	30.277	ug/L	98
47) Tetrachloroethene	8.553	164	3836	0.360	ug/L	84
51) Chlorobenzene	9.441	112	919610	26.204	ug/L	99
64) 1,3-Dichlorobenzene	11.746	146	4241	0.169	ug/L	88
65) 1,4-Dichlorobenzene	11.830	146	32469	1.282	ug/L	96
67) 1,2-Dichlorobenzene	12.206	146	30844	1.371	ug/L	95

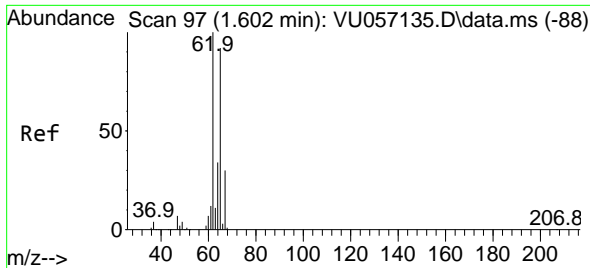
(#) = qualifier out of range (m) = manual integration (+) = signals summed

Data Path : Z:\voasrv\HPCHEM1\MSVOA\_U\Data\VU122123\  
 Data File : VU057149.D  
 Acq On : 21 Dec 2023 21:14  
 Operator : MD/SY  
 Sample : 05894-11  
 Misc : 25.0mL/MSVOA\_U/WATER  
 ALS Vial : 25 Sample Multiplier: 1

Instrument :  
 MSVOA\_U  
 ClientSampleId :  
 BH3L7

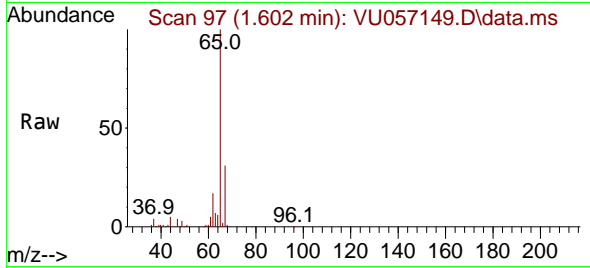
Quant Time: Dec 21 23:34:16 2023  
 Quant Method : Z:\voasrv\HPCHEM1\MSVOA\_U\Method\SFAMUTR122123WMA.M  
 Quant Title : TRACE VOA SFAM1.0  
 QLast Update : Thu Dec 21 23:30:13 2023  
 Response via : Initial Calibration



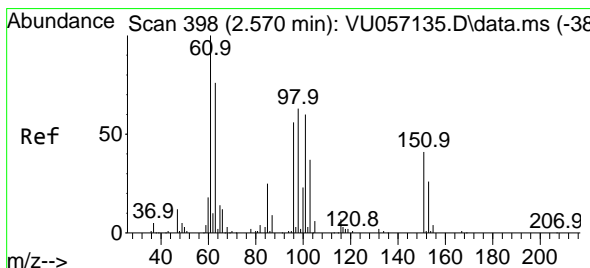
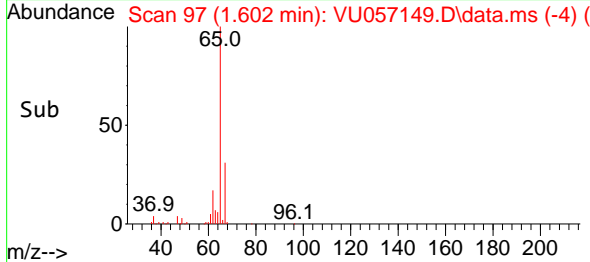
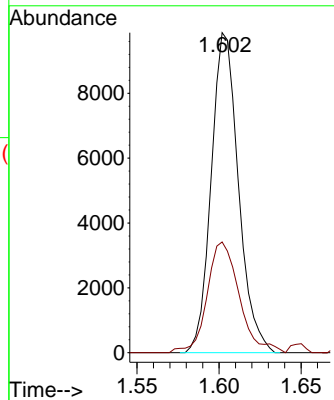


#5  
 Vinyl chloride  
 Concen: 0.797 ug/L  
 RT: 1.602 min Scan# 91  
 Delta R.T. -0.000 min  
 Lab File: VU057149.D  
 Acq: 21 Dec 2023 21:14

Instrument :  
 MSVOA\_U  
 ClientSampleId :  
 BH3L7

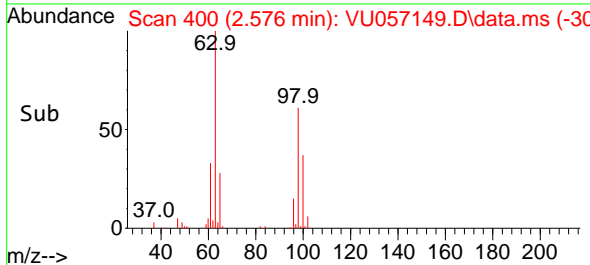
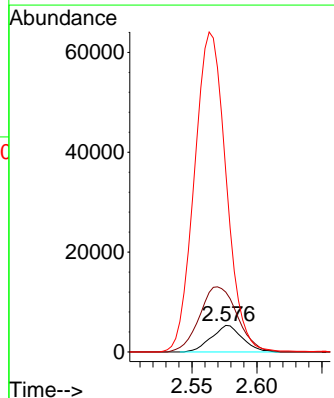
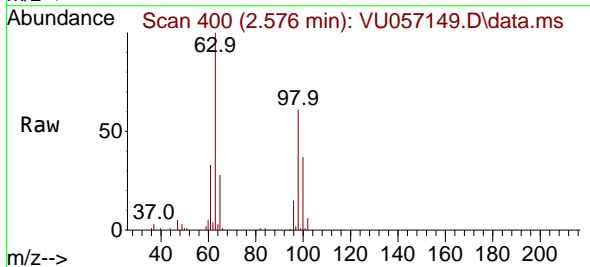


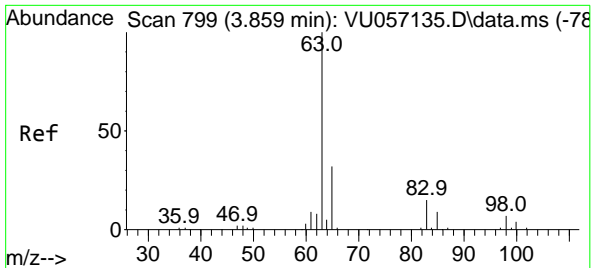
Tgt Ion: 62 Resp: 11384  
 Ion Ratio Lower Upper  
 62 100  
 64 34.6 23.3 43.3



#12  
 1,1-Dichloroethene  
 Concen: 0.720 ug/L  
 RT: 2.576 min Scan# 400  
 Delta R.T. 0.006 min  
 Lab File: VU057149.D  
 Acq: 21 Dec 2023 21:14

Tgt Ion: 96 Resp: 8792  
 Ion Ratio Lower Upper  
 96 100  
 61 225.4 119.6 222.0#  
 63 677.9 96.2 178.8#

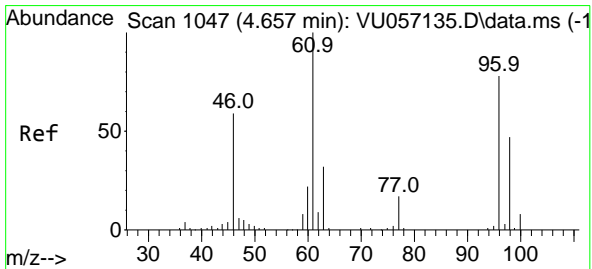
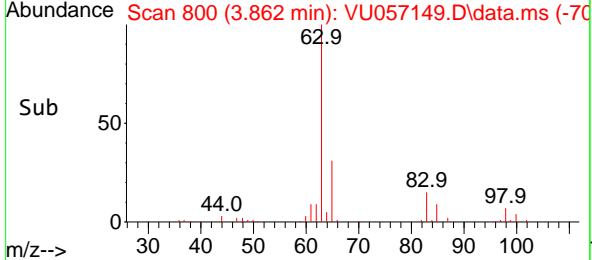
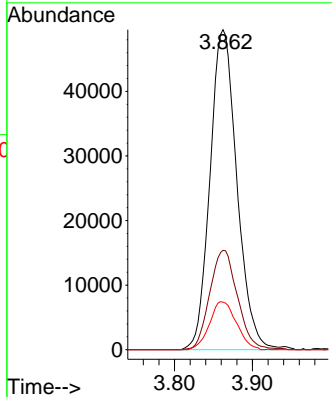
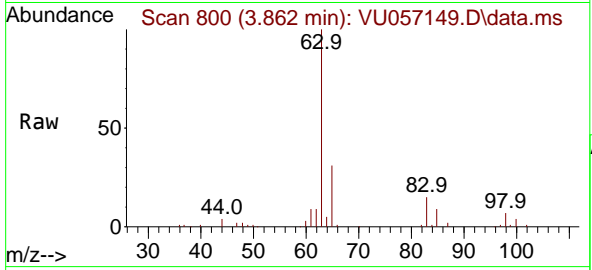




#19  
 1,1-Dichloroethane  
 Concen: 5.018 ug/L  
 RT: 3.862 min Scan# 800  
 Delta R.T. 0.003 min  
 Lab File: VU057149.D  
 Acq: 21 Dec 2023 21:14

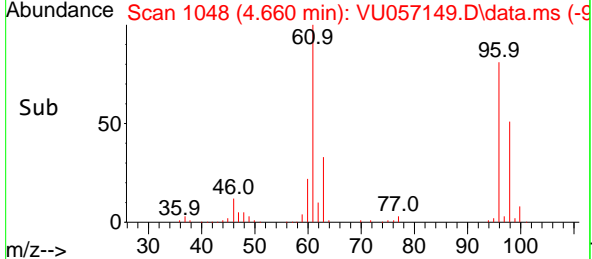
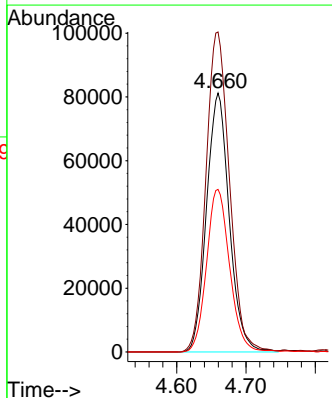
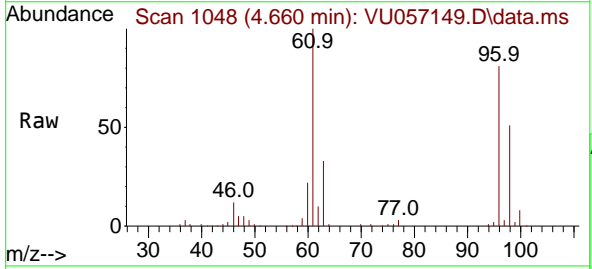
Instrument : MSVOA\_U  
 ClientSampleId : BH3L7

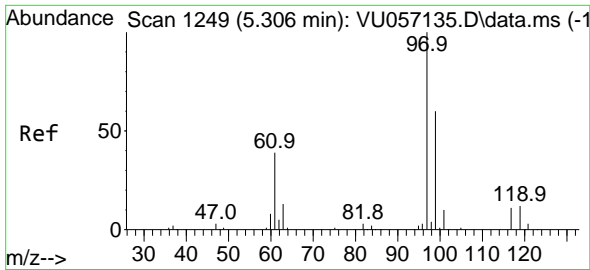
Tgt Ion	Resp	Lower	Upper
63	118620		
65	31.0	21.6	40.2
83	14.9	10.2	19.0



#22  
 cis-1,2-Dichloroethene  
 Concen: 14.109 ug/L  
 RT: 4.660 min Scan# 1048  
 Delta R.T. 0.003 min  
 Lab File: VU057149.D  
 Acq: 21 Dec 2023 21:14

Tgt Ion	Resp	Lower	Upper
96	185061		
61	123.6	86.8	161.2
98	62.8	45.5	84.5

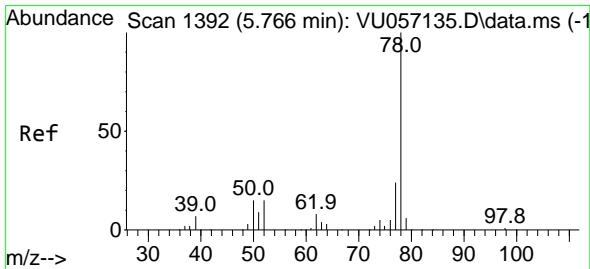
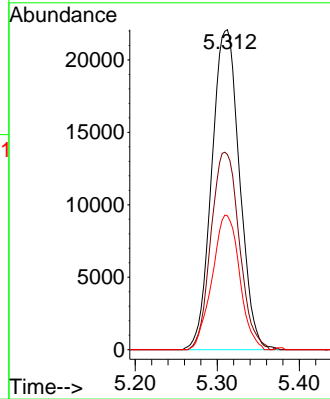
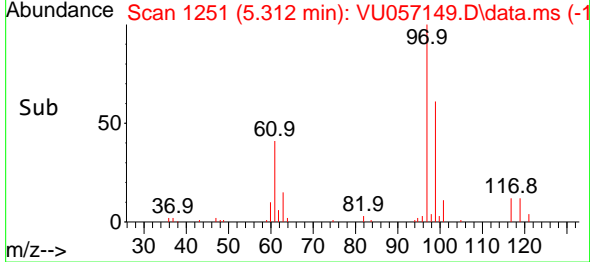
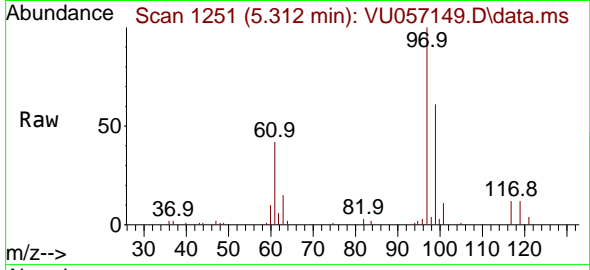




#29  
 1,1,1-Trichloroethane  
 Concen: 2.041 ug/L  
 RT: 5.312 min Scan# 11  
 Delta R.T. 0.006 min  
 Lab File: VU057149.D  
 Acq: 21 Dec 2023 21:14

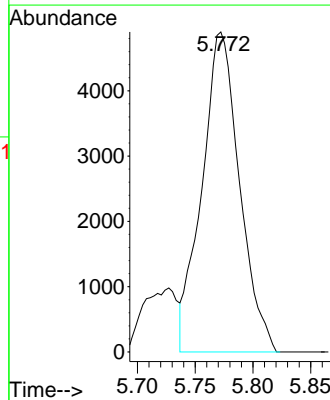
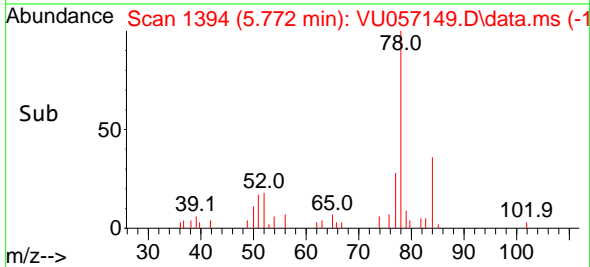
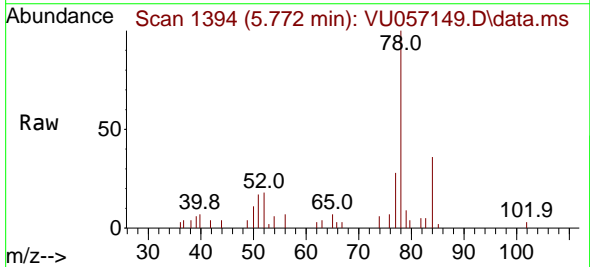
Instrument :  
 MSVOA\_U  
 ClientSampleId :  
 BH3L7

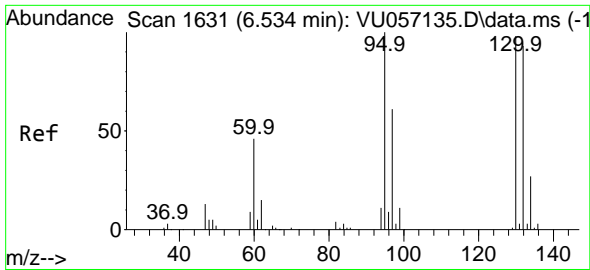
Tgt Ion	Resp	Lower	Upper
97	100		
99	62.9	51.2	76.8
61	41.5	32.5	48.7



#33  
 Benzene  
 Concen: 0.218 ug/L  
 RT: 5.772 min Scan# 1394  
 Delta R.T. 0.006 min  
 Lab File: VU057149.D  
 Acq: 21 Dec 2023 21:14

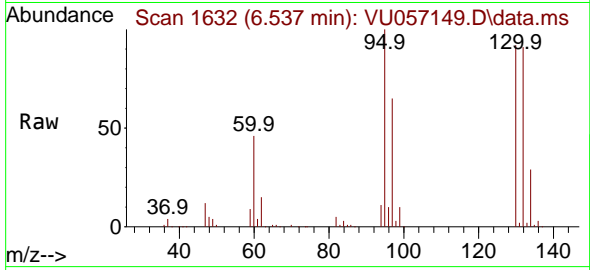
Tgt Ion: 78 Resp: 11099



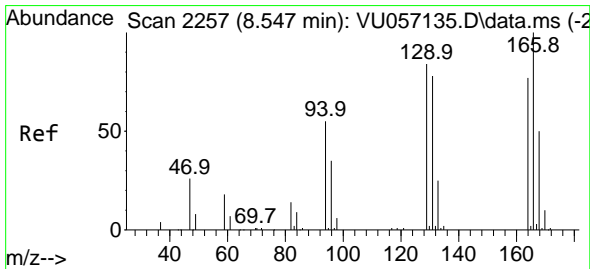
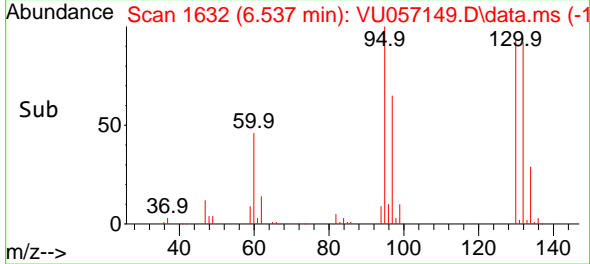
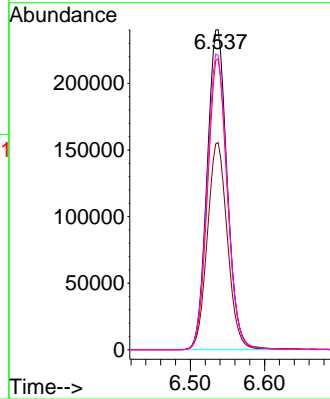


#34  
 Trichloroethene  
 Concen: 30.277 ug/L  
 RT: 6.537 min Scan# 1  
 Delta R.T. 0.003 min  
 Lab File: VU057149.D  
 Acq: 21 Dec 2023 21:14

Instrument :  
 MSVOA\_U  
 ClientSampleId :  
 BH3L7

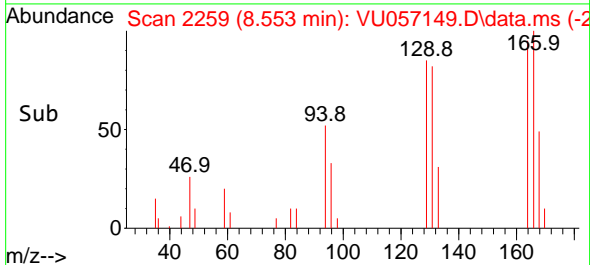
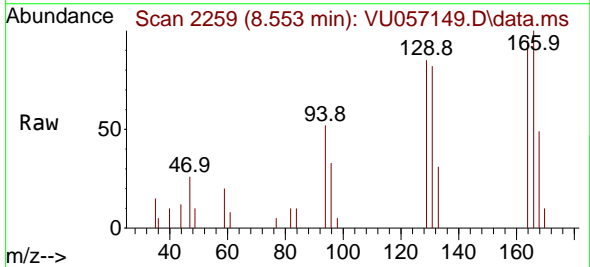
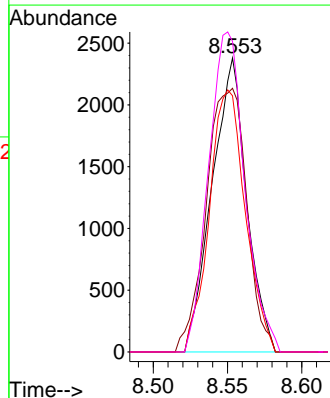


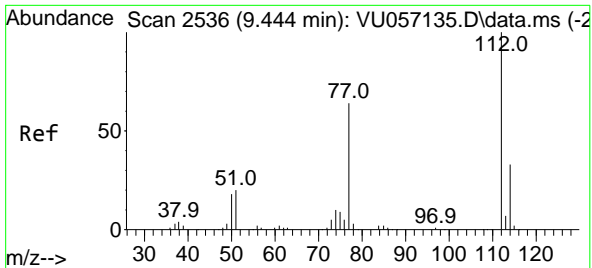
Tgt Ion: 95 Resp: 450483  
 Ion Ratio Lower Upper  
 95 100  
 97 64.7 44.3 82.3  
 132 90.9 62.6 116.2  
 130 92.0 62.4 116.0



#47  
 Tetrachloroethene  
 Concen: 0.360 ug/L  
 RT: 8.553 min Scan# 2259  
 Delta R.T. 0.006 min  
 Lab File: VU057149.D  
 Acq: 21 Dec 2023 21:14

Tgt Ion: 164 Resp: 3836  
 Ion Ratio Lower Upper  
 164 100  
 129 89.7 72.9 135.3  
 131 87.1 71.7 133.3  
 166 105.6 87.7 162.9

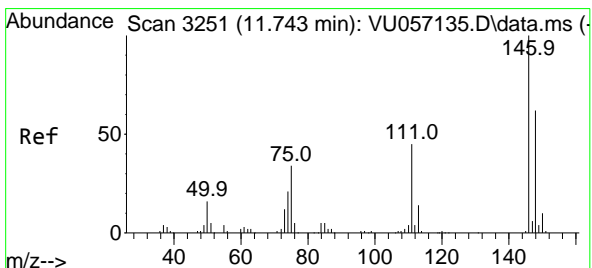
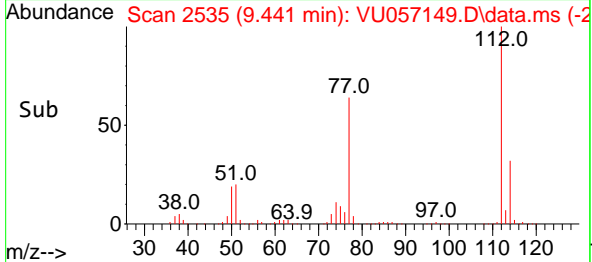
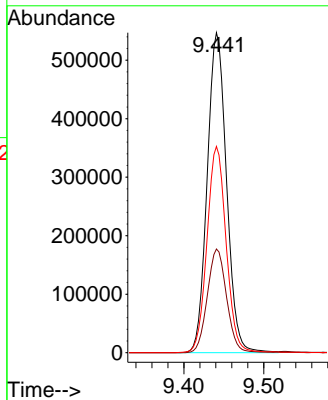
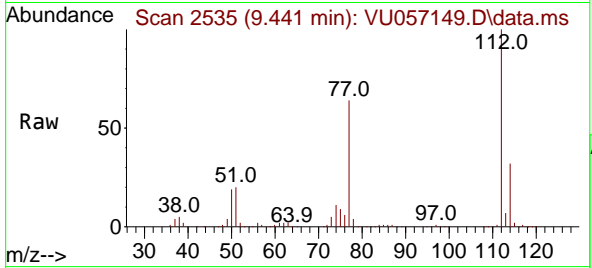




#51  
 Chlorobenzene  
 Concen: 26.204 ug/L  
 RT: 9.441 min Scan# 21  
 Delta R.T. -0.003 min  
 Lab File: VU057149.D  
 Acq: 21 Dec 2023 21:14

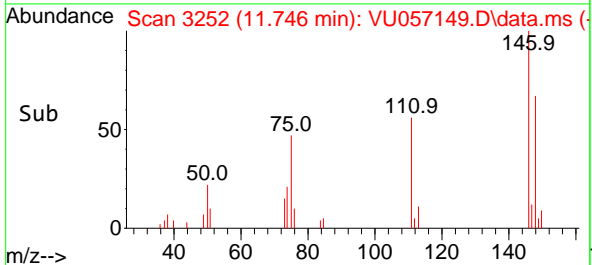
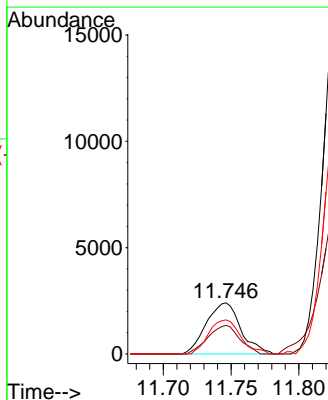
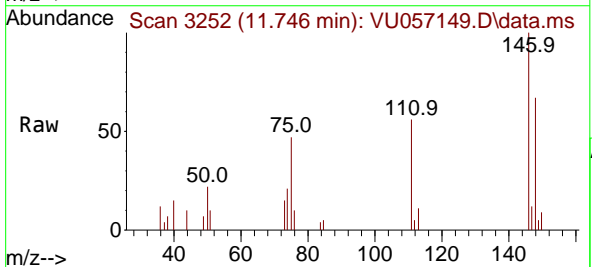
Instrument :  
 MSVOA\_U  
 ClientSampleId :  
 BH3L7

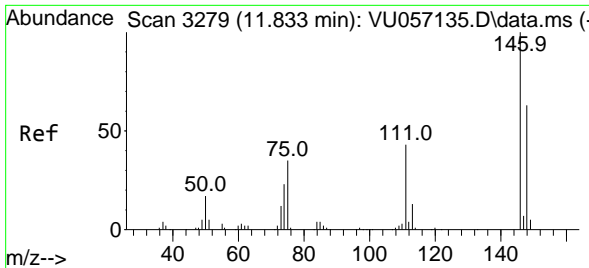
Tgt Ion:112 Resp: 919610  
 Ion Ratio Lower Upper  
 112 100  
 114 32.4 22.7 42.1  
 77 64.4 52.2 78.2



#64  
 1,3-Dichlorobenzene  
 Concen: 0.169 ug/L  
 RT: 11.746 min Scan# 3252  
 Delta R.T. 0.003 min  
 Lab File: VU057149.D  
 Acq: 21 Dec 2023 21:14

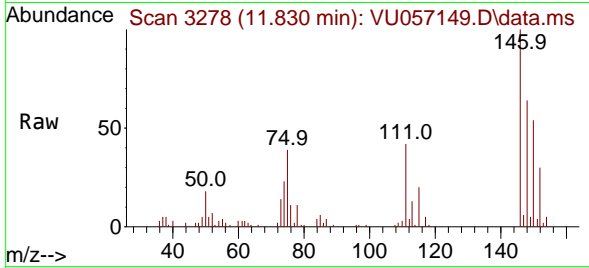
Tgt Ion:146 Resp: 4241  
 Ion Ratio Lower Upper  
 146 100  
 111 55.9 30.4 56.4  
 148 66.6 43.4 80.6



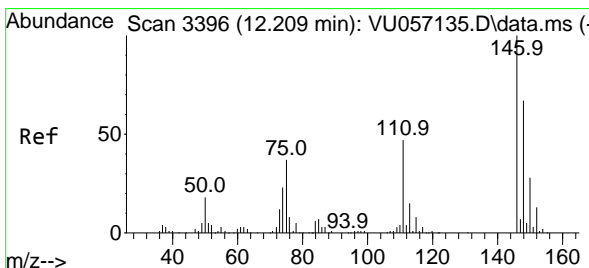
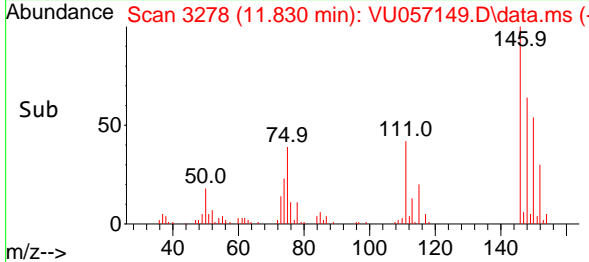
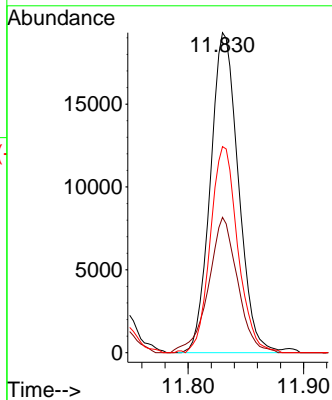


#65  
 1,4-Dichlorobenzene  
 Concen: 1.282 ug/L  
 RT: 11.830 min Scan# 31  
 Delta R.T. -0.003 min  
 Lab File: VU057149.D  
 Acq: 21 Dec 2023 21:14

Instrument :  
 MSVOA\_U  
 ClientSampleId :  
 BH3L7



Tgt Ion:146 Resp: 32469  
 Ion Ratio Lower Upper  
 146 100  
 111 42.3 28.1 52.3  
 148 64.4 43.0 79.8



#67  
 1,2-Dichlorobenzene  
 Concen: 1.371 ug/L  
 RT: 12.206 min Scan# 3395  
 Delta R.T. -0.003 min  
 Lab File: VU057149.D  
 Acq: 21 Dec 2023 21:14

Tgt Ion:146 Resp: 30844  
 Ion Ratio Lower Upper  
 146 100  
 111 48.7 37.9 56.9  
 148 68.6 50.1 75.1

