

Data Path : Z:\voasrv\HPCHEM1\MSVOA_U\Data\VU122123\
 Data File : VU057169.D
 Acq On : 22 Dec 2023 05:42
 Operator : MD/SY
 Sample : 05912-09
 Misc : 25.0mL/MSVOA_U/WATER
 ALS Vial : 46 Sample Multiplier: 1

Instrument :
 MSVOA_U
 ClientSampleId :
 BH3M6

Integration Parameters: rteint.p
 Integrator: RTE
 Smoothing : ON Filtering: 5
 Sampling : 1 Min Area: 3 % of largest Peak
 Start Thrs: 0.1 Max Peaks: 100
 Stop Thrs : 0 Peak Location: TOP

If leading or trailing edge < 100 prefer < Baseline drop else tangent >
 Peak separation: 5

Method : Z:\voasrv\HPCHEM1\MSVOA_U\Method\SFAMUTR122123WMA.M
 Title : TRACE VOA SFAM1.0

Signal : TIC: VU057169.D\data.ms

peak #	R.T. min	first scan	max scan	last scan	PK TY	peak height	corr. area	corr. % max.	% of total
1	1.599	86	96	109	rVB	101805	119537	17.19%	2.079%
2	1.727	128	136	147	rVB	42873	54335	7.81%	0.945%
3	1.911	181	193	208	rVB	79848	109353	15.73%	1.902%
4	2.563	384	396	414	rVB	152694	252834	36.36%	4.396%
5	3.177	566	587	607	rBV2	65963	151667	21.81%	2.637%
6	4.634	1022	1040	1085	rBV2	91584	347008	49.90%	6.034%
7	4.817	1089	1097	1111	rVB2	6117	14492	2.08%	0.252%
8	5.055	1156	1171	1196	rVB	143848	323859	46.57%	5.632%
9	5.721	1358	1378	1405	rBV2	264592	695397	100.00%	12.092%
10	6.245	1527	1541	1567	rBV2	181977	354287	50.95%	6.161%
11	6.685	1664	1678	1697	rBV3	157369	318794	45.84%	5.543%
12	7.560	1939	1950	1969	rBV	75357	137712	19.80%	2.395%
13	7.891	2041	2053	2067	rBV	318803	555645	79.90%	9.662%
14	7.965	2067	2076	2092	rVB	50200	90928	13.08%	1.581%
15	8.174	2130	2141	2156	rBV3	45636	82308	11.84%	1.431%
16	8.631	2271	2283	2315	rBV2	306063	603058	86.72%	10.486%
17	9.412	2514	2526	2544	rBV	257710	444509	63.92%	7.730%
18	9.502	2547	2554	2564	rVB7	4043	7157	1.03%	0.124%
19	10.750	2930	2942	2956	rBV	115501	187399	26.95%	3.259%
20	10.885	2975	2984	2997	rVB3	5970	10444	1.50%	0.182%
21	11.807	3257	3271	3295	rBV	241327	393221	56.55%	6.838%
22	12.187	3376	3389	3412	rBV	291160	476478	68.52%	8.285%
23	14.573	4123	4131	4140	rVB	5057	7060	1.02%	0.123%
24	16.881	4841	4849	4856	rVB2	10048	13322	1.92%	0.232%

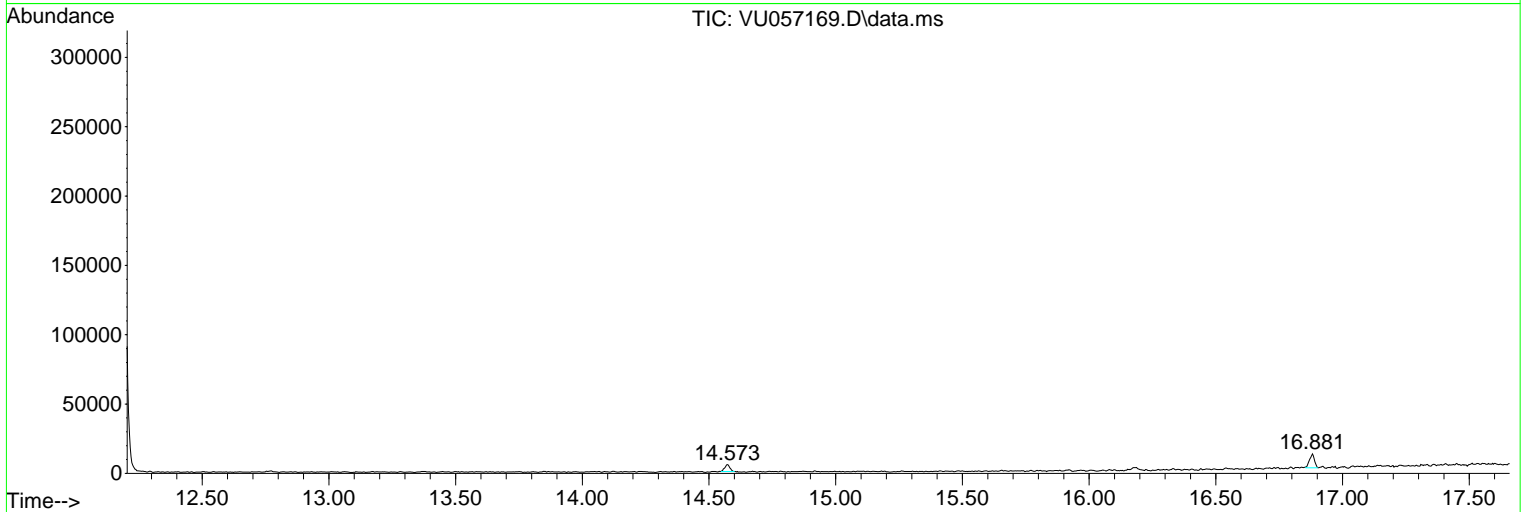
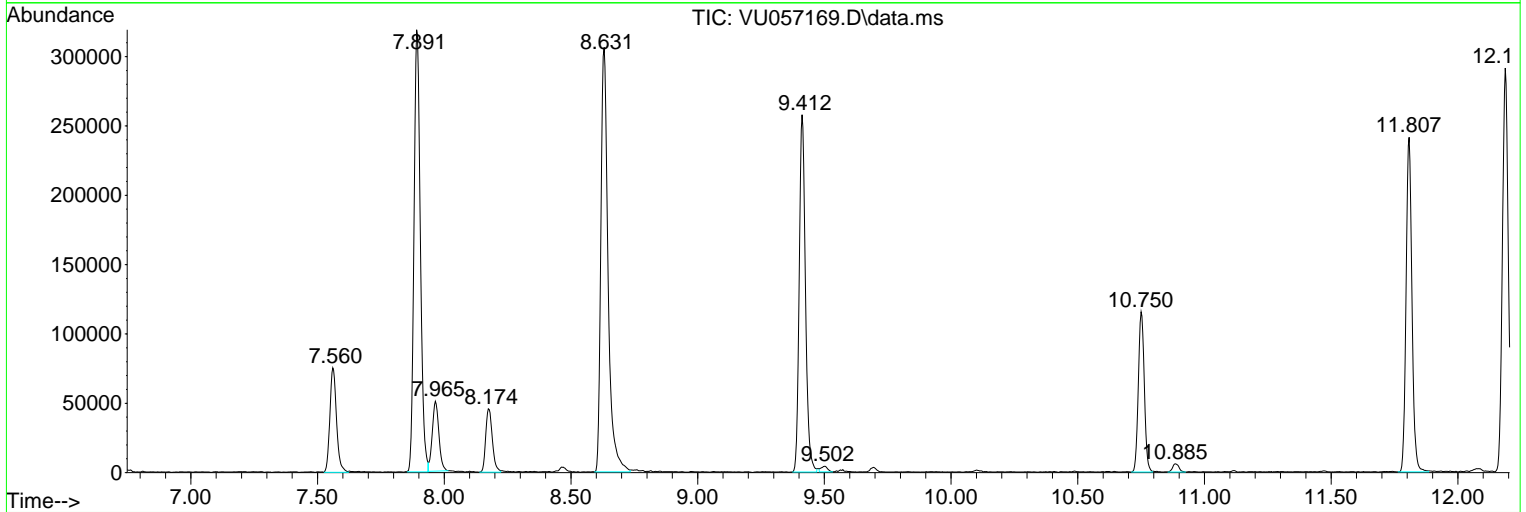
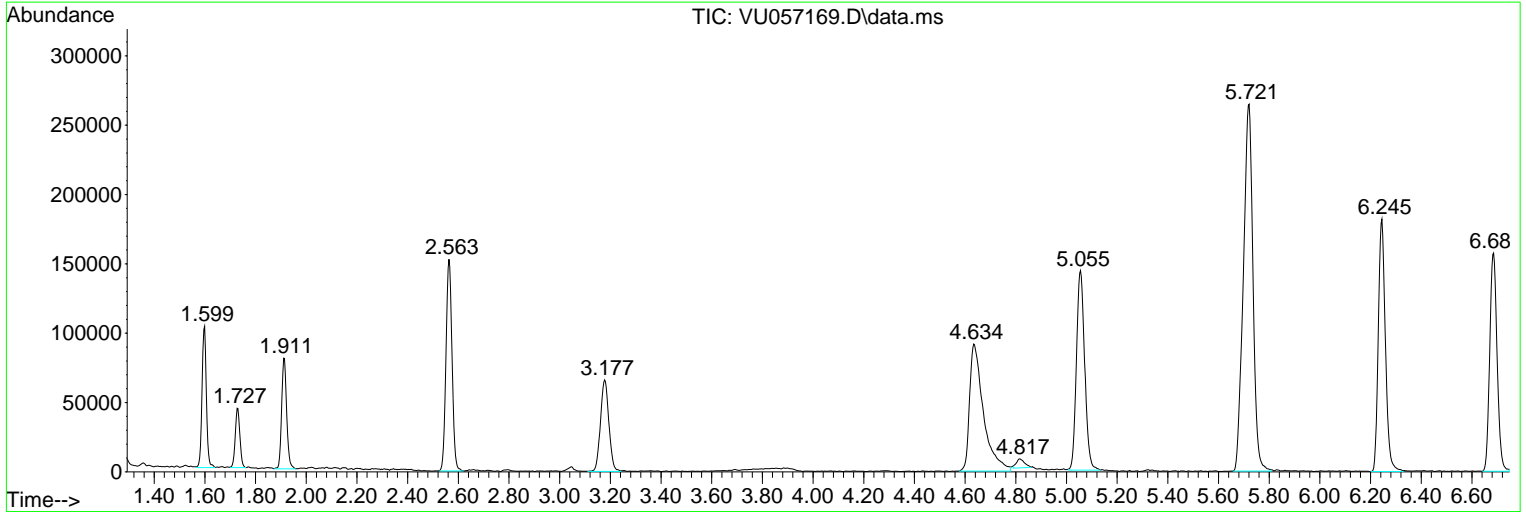
Sum of corrected areas: 5750804

Data Path : Z:\voasrv\HPCHEM1\MSVOA_U\Data\VU122123\
 Data File : VU057169.D
 Acq On : 22 Dec 2023 05:42
 Operator : MD/SY
 Sample : 05912-09
 Misc : 25.0mL/MSVOA_U/WATER
 ALS Vial : 46 Sample Multiplier: 1

Instrument :
 MSVOA_U
 ClientSampleId :
 BH3M6

Quant Method : Z:\voasrv\HPCHEM1\MSVOA_U\Method\SFAMUTR122123WMA.M
 Quant Title : TRACE VOA SFAM1.0

TIC Library :
 TIC Integration Parameters: rteint.p



Library Search Compound Report

Data Path : Z:\voasrv\HPCHEM1\MSVOA_U\Data\VU122123\
Data File : VU057169.D
Acq On : 22 Dec 2023 05:42
Operator : MD/SY
Sample : 05912-09
Misc : 25.0mL/MSVOA_U/WATER
ALS Vial : 46 Sample Multiplier: 1

Instrument :
MSVOA_U
ClientSampleId :
BH3M6

Quant Method : Z:\voasrv\HPCHEM1\MSVOA_U\Method\SFAMUTR122123WMA.M
Quant Title : TRACE VOA SFAM1.0

TIC Library :
TIC Integration Parameters: rteint.p

No Library Search Compounds Detected

Data Path : Z:\voasrv\HPCHEM1\MSVOA_U\Data\VU122123\
Data File : VU057169.D
Acq On : 22 Dec 2023 05:42
Operator : MD/SY
Sample : 05912-09
Misc : 25.0mL/MSVOA_U/WATER
ALS Vial : 46 Sample Multiplier: 1

Instrument :
MSVOA_U
ClientSampleId :
BH3M6

Quant Method : Z:\voasrv\HPCHEM1\MSVOA_U\Method\SFAMUTR122123WMA.M
Quant Title : TRACE VOA SFAM1.0

TIC Library :
TIC Integration Parameters: rteint.p

TIC Top Hit name	RT	EstConc	Units	Response	--Internal Standard--		
					#	RT	Resp Conc
