

Data Path : Z:\VOASRV\HPCHEM1\MSVOA U\DATA\VU122220\
 Data File : VU041734.D
 Acq On : 22 Dec 2020 12:15
 Operator : SY/MD
 Sample : L5148-08
 Misc : 25.0mL/MSVOA U/WATER
 ALS Vial : 9 Sample Multiplier: 1

Instrument :
 MSVOA_U
 ClientSampleId :
 GB1T7

Quant Time: Dec 23 04:33:39 2020
 Quant Method : Z:\VOASRV\HPCHEM1\MSVOA_U\METHOD\SOMUTR121220WMA.M
 Quant Title : TRACE VOA SOM01.0
 QLast Update : Wed Dec 23 04:05:15 2020
 Response via : Initial Calibration

Internal Standards	R.T.	QIon	Response	Conc	Units	Dev(Min)
1) 1,4-Difluorobenzene	6.26	114	133154	5.00	ug/L	0.00
28) Chlorobenzene-d5	9.42	117	129368	5.00	ug/L	0.00
60) 1,4-Dichlorobenzene-d4	11.81	152	56464	5.00	ug/L	0.00

System Monitoring Compounds

4) Vinyl Chloride-d3	1.60	65	33788	3.25	ug/L	0.00
Spiked Amount	5.000	Range	40 - 130	Recovery	=	65.00%
7) Chloroethane-d5	1.92	69	37932	4.71	ug/L	0.00
Spiked Amount	5.000	Range	65 - 130	Recovery	=	94.20%
11) 1,1-Dichloroethene-d2	2.58	63	63744	3.32	ug/L	0.00
Spiked Amount	5.000	Range	60 - 125	Recovery	=	66.40%
20) 2-Butanone-d5	4.66	46	157146	52.55	ug/L	0.00
Spiked Amount	50.000	Range	40 - 130	Recovery	=	105.10%
24) Chloroform-d	5.08	84	83732	4.69	ug/L	0.00
Spiked Amount	5.000	Range	70 - 125	Recovery	=	93.80%
26) 1,2-Dichloroethane-d4	5.72	65	48375	4.78	ug/L	0.00
Spiked Amount	5.000	Range	70 - 130	Recovery	=	95.60%
32) Benzene-d6	5.74	84	163730	4.42	ug/L	0.00
Spiked Amount	5.000	Range	70 - 125	Recovery	=	88.40%
36) 1,2-Dichloropropane-d6	6.70	67	53089	4.57	ug/L	0.00
Spiked Amount	5.000	Range	60 - 140	Recovery	=	91.40%
41) Toluene-d8	7.91	98	132262	3.96	ug/L	0.00
Spiked Amount	5.000	Range	70 - 130	Recovery	=	79.20%
43) trans-1,3-Dichloropropene-	8.19	79	20699	3.96	ug/L	0.00
Spiked Amount	5.000	Range	55 - 130	Recovery	=	79.20%
46) 2-Hexanone-d5	8.64	63	136808	47.92	ug/L	0.00
Spiked Amount	50.000	Range	45 - 130	Recovery	=	95.84%
57) 1,1,2,2-Tetrachloroethane-	10.75	84	52117	4.94	ug/L	0.00
Spiked Amount	5.000	Range	65 - 120	Recovery	=	98.80%
64) 1,2-Dichlorobenzene-d4	12.19	152	53426	5.32	ug/L	0.00
Spiked Amount	5.000	Range	80 - 120	Recovery	=	106.40%

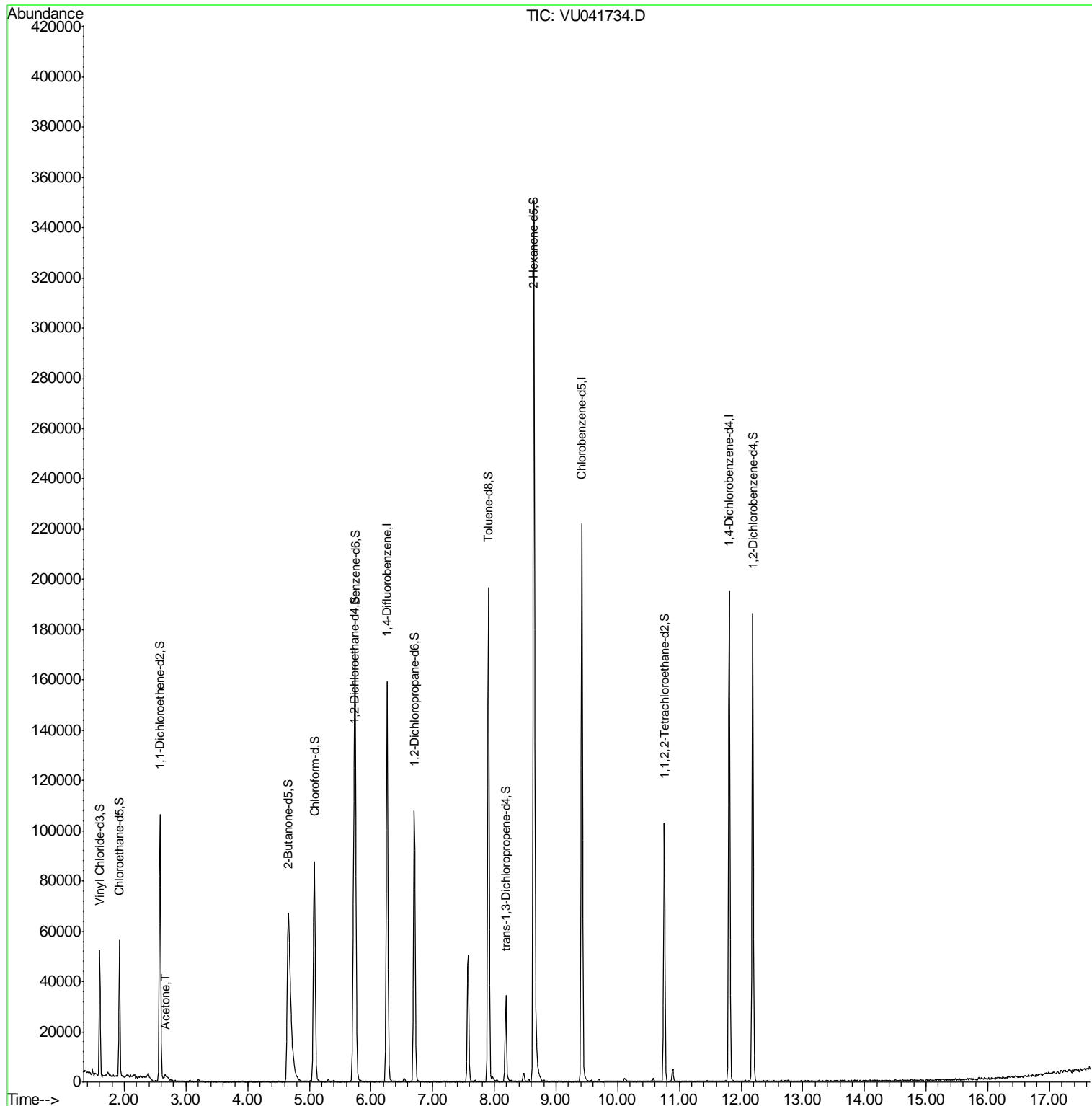
Target Compounds					Ovalue
13) Acetone	2.67	43	3467	1.823 ug/L	55

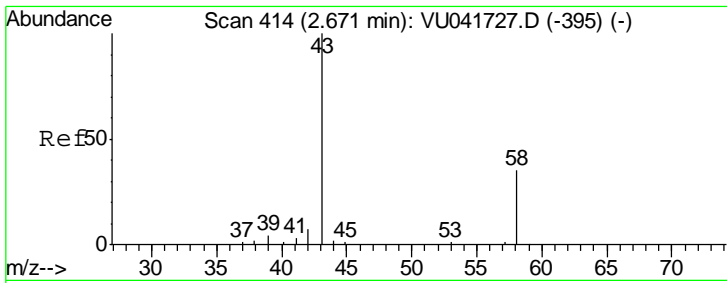
(#) = qualifier out of range (m) = manual integration (+) = signals summed

Data Path : Z:\VOASRV\HPCHEM1\MSVOA U\DATA\VU122220\
 Data File : VU041734.D
 Acq On : 22 Dec 2020 12:15
 Operator : SY/MD
 Sample : L5148-08
 Misc : 25.0mL/MSVOA U/WATER
 ALS Vial : 9 Sample Multiplier: 1

Instrument :
 MSVOA_U
 ClientSampleId :
 GB1T7

Quant Time: Dec 23 04:33:39 2020
 Quant Method : Z:\VOASRV\HPCHEM1\MSVOA_U\METHOD\SOMUTR121220WMA.M
 Quant Title : TRACE VOA SOM01.0
 QLast Update : Wed Dec 23 04:05:15 2020
 Response via : Initial Calibration





#13
 Acetone
 Concen: 1.823 ug/L
 RT: 2.67 min Scan# 414
 Delta R.T. -0.00 min
 Lab File: VU041734.D
 Acq: 22 Dec 2020 12:15

Instrument :
 MSVOA_U
 ClientSampleId :
 GB1T7

Tot Ion: 43 Resp: 3467

Ion	Ratio	Lower	Upper
43	100		
58	10.2	0.0	73.2

