

Data Path : Z:\voasrv\HPCHEM1\MSVOA_U\Data\VU122222\
 Data File : VU052484.D
 Acq On : 22 Dec 2022 12:11
 Operator : JC/MD
 Sample : N6169-18
 Misc : 25.0mL/MSVOA_U/WATER
 ALS Vial : 5 Sample Multiplier: 1

Instrument :
 MSVOA_U
 ClientSampleId :
 GBQA9

Integration Parameters: rteint.p

Integrator: RTE

Smoothing : ON

Sampling : 1

Start Thrs : 0.1

Stop Thrs : 0

Filtering: 5

Min Area: 3 % of largest Peak

Max Peaks: 100

Peak Location: TOP

If leading or trailing edge < 100 prefer < Baseline drop else tangent >

Peak separation: 5

Method : Z:\voasrv\HPCHEM1\MSVOA_U\Method\SFAMUTR122022WMA.M

Title : TRACE VOA SFAM1.0

Signal : TIC: VU052484.D\data.ms

peak #	R.T. min	first scan	max scan	last scan	PK TY	peak height	corr. area	corr. % max.	% of total
1	1.385	7	14	37	rVB	116169	133656	6.11%	0.702%
2	1.600	73	81	101	rVB2	222130	275679	12.61%	1.449%
3	1.935	170	185	207	rVB2	304945	523419	23.95%	2.750%
4	2.578	369	385	397	rBV2	584720	1189531	54.42%	6.251%
5	2.661	397	411	474	rVB2	357433	1687973	77.23%	8.870%
6	2.960	491	504	521	rBV	52413	135712	6.21%	0.713%
7	3.044	521	530	547	rVB2	23048	48027	2.20%	0.252%
8	3.353	611	626	645	rBV	103861	207500	9.49%	1.090%
9	3.864	768	785	805	rBV3	55626	133997	6.13%	0.704%
10	4.661	1011	1033	1067	rBV2	212963	715706	32.74%	3.761%
11	4.973	1114	1130	1144	rBV	130676	290908	13.31%	1.529%
12	5.079	1144	1163	1189	rVB4	317595	930369	42.56%	4.889%
13	5.314	1219	1236	1256	rBV2	68598	156926	7.18%	0.825%
14	5.520	1281	1300	1318	rBV2	93823	205382	9.40%	1.079%
15	5.722	1341	1363	1376	rBV2	305129	794477	36.35%	4.175%
16	5.790	1376	1384	1409	rVB2	50161	106756	4.88%	0.561%
17	6.246	1511	1526	1546	rBV	220498	418419	19.14%	2.199%
18	6.539	1604	1617	1634	rBV	97968	184040	8.42%	0.967%
19	6.687	1648	1663	1687	rBV2	199475	391052	17.89%	2.055%
20	7.221	1812	1829	1843	rBV2	10765	21884	1.00%	0.115%
21	7.562	1923	1935	1941	rBV	88432	152907	7.00%	0.804%
22	7.603	1941	1948	1974	rVB	184560	325569	14.89%	1.711%
23	7.790	1992	2006	2027	rBV	1209526	2185770	100.00%	11.486%
24	7.896	2027	2039	2057	rVB	393112	689394	31.54%	3.623%
25	8.179	2116	2127	2130	rBV	61132	95725	4.38%	0.503%
26	8.208	2131	2136	2157	rVB	87452	141882	6.49%	0.746%
27	8.398	2183	2195	2209	rBV2	85333	148063	6.77%	0.778%
28	8.549	2230	2242	2257	rVB	165165	279462	12.79%	1.469%
29	8.632	2257	2268	2301	rBV	530423	1038791	47.53%	5.459%
30	8.922	2344	2358	2374	rBV	89373	155442	7.11%	0.817%
31	9.417	2499	2512	2514	rBV	333724	469530	21.48%	2.467%
32	9.443	2515	2520	2544	rVB	506709	796062	36.42%	4.183%
33	10.288	2770	2783	2795	rBV	52581	87662	4.01%	0.461%
34	10.751	2913	2927	2948	rBV2	157228	355412	16.26%	1.868%
35	11.465	3137	3149	3169	rBV	371441	571872	26.16%	3.005%
36	11.741	3222	3235	3245	rBV	238220	374716	17.14%	1.969%

Data Path : Z:\voasrv\HPCHEM1\MSVOA_U\Data\VU122222\
Data File : VU052484.D
Acq On : 22 Dec 2022 12:11
Operator : JC/MD
Sample : N6169-18
Misc : 25.0mL/MSVOA_U/WATER
ALS Vial : 5 Sample Multiplier: 1

Instrument :
MSVOA_U
ClientSampleId :
GBQA9

Integration Parameters: rteint.p

Integrator: RTE

Smoothing : ON

Filtering: 5

Sampling : 1

Min Area: 3 % of largest Peak

Start Thrs: 0.1

Max Peaks: 100

Stop Thrs : 0

Peak Location: TOP

If leading or trailing edge < 100 prefer < Baseline drop else tangent >

Peak separation: 5

Method : Z:\voasrv\HPCHEM1\MSVOA_U\Method\SFAMUTR122022WMA.M

Title : TRACE VOA SFAM1.0

37	11.809	3245	3256	3279	rVB3	345700	786203	35.97%	4.131%
38	12.188	3361	3374	3397	rBV	328603	537031	24.57%	2.822%
39	13.214	3681	3693	3712	rBV	363718	568068	25.99%	2.985%
40	13.835	3874	3886	3911	rBV	283815	458804	20.99%	2.411%
41	14.323	4027	4038	4059	rBV	157571	260256	11.91%	1.368%

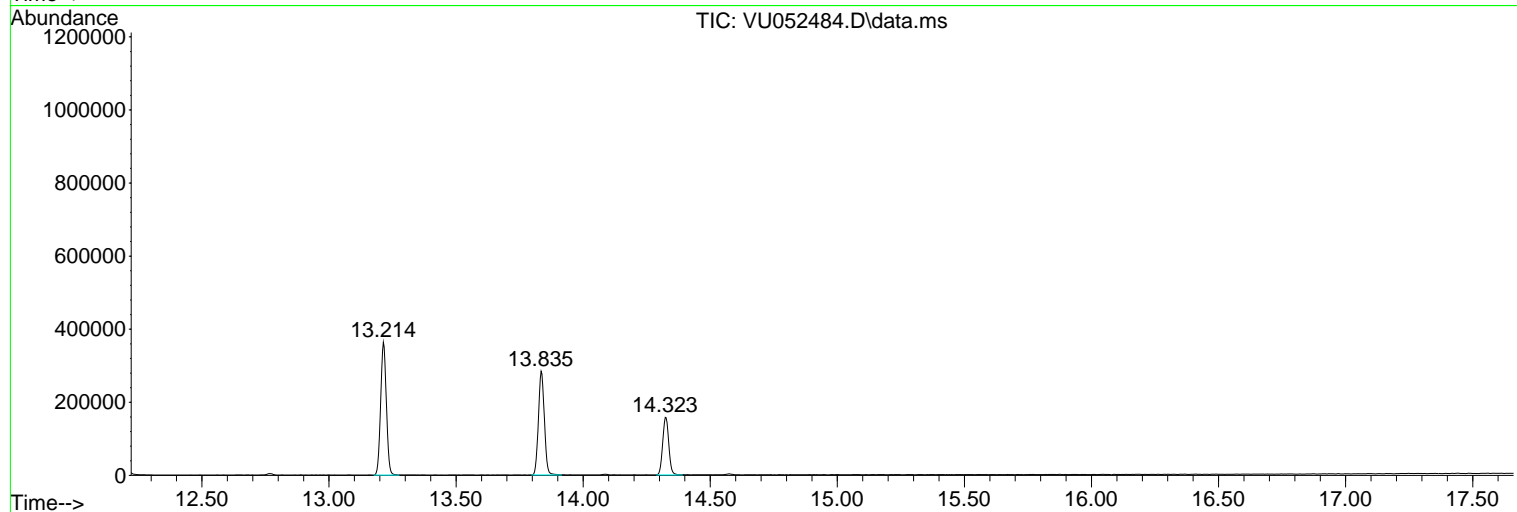
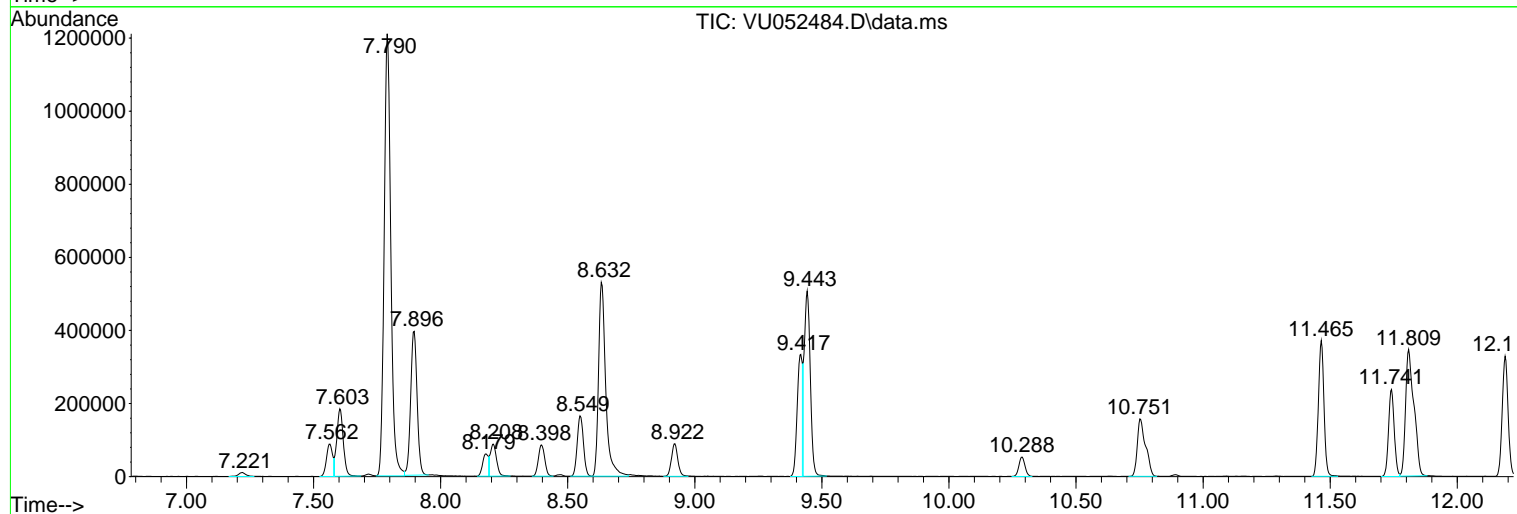
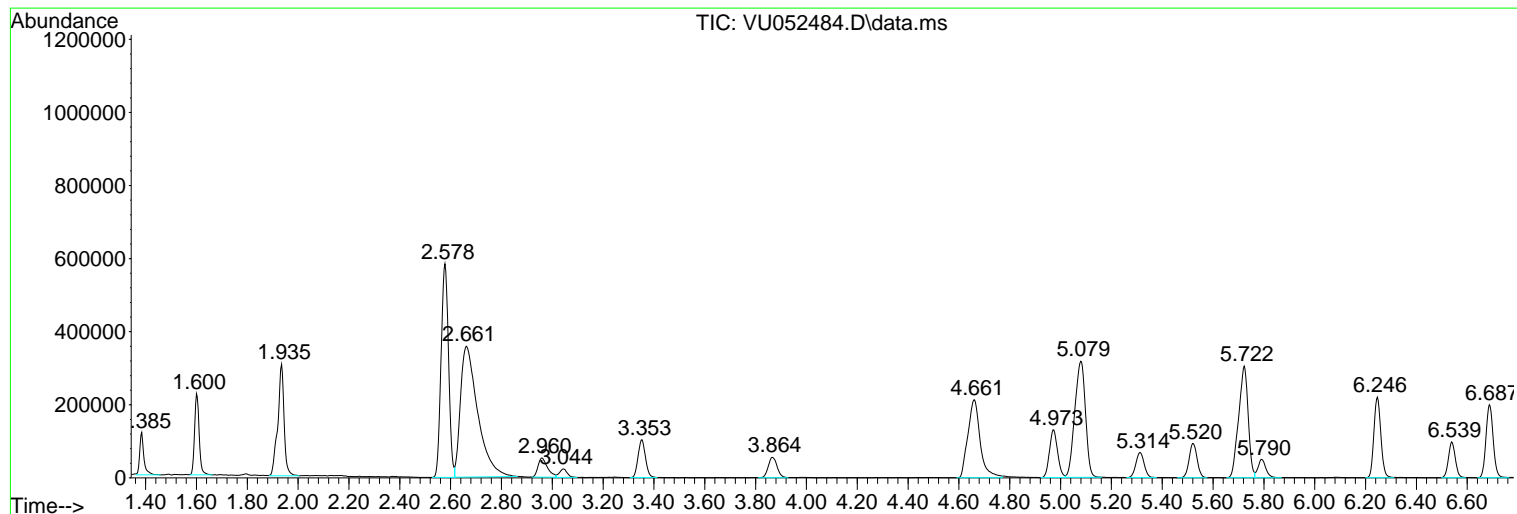
Sum of corrected areas: 19030034

Data Path : Z:\voasrv\HPCHEM1\MSVOA_U\Data\VU122222\
Data File : VU052484.D
Acq On : 22 Dec 2022 12:11
Operator : JC/MD
Sample : N6169-18
Misc : 25.0mL/MSVOA_U/WATER
ALS Vial : 5 Sample Multiplier: 1

Instrument :
MSVOA_U
ClientSampleId :
GBQA9

Quant Method : Z:\voasrv\HPCHEM1\MSVOA_U\Method\SFAMUTR122022WMA.M
Quant Title : TRACE VOA SFAM1.0

TIC Library : C:\Database\NIST20.L
TIC Integration Parameters: LSCINT.P



Data Path : Z:\voasrv\HPCHEM1\MSVOA_U\Data\VU122222\
 Data File : VU052484.D
 Acq On : 22 Dec 2022 12:11
 Operator : JC/MD
 Sample : N6169-18
 Misc : 25.0mL/MSVOA_U/WATER
 ALS Vial : 5 Sample Multiplier: 1

Instrument :
 MSVOA_U
 ClientSampleId :
 GBQA9

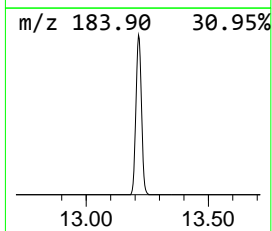
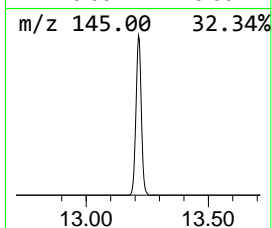
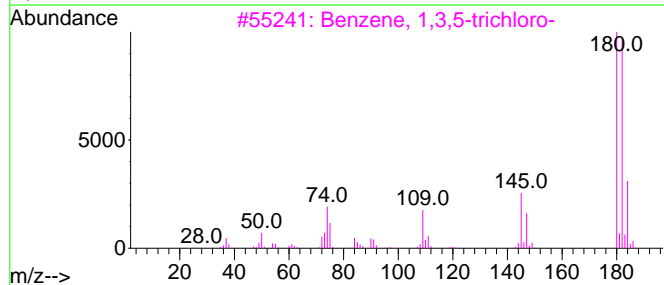
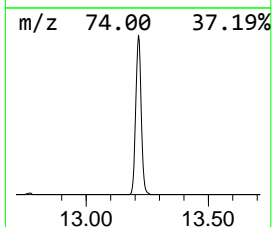
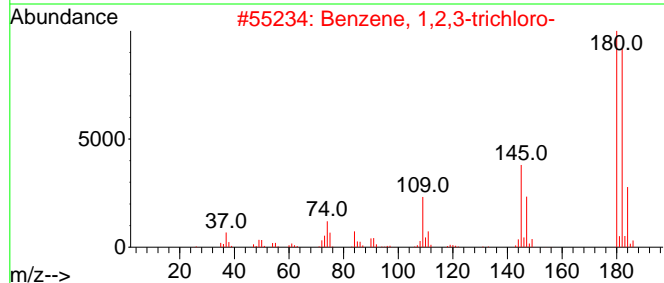
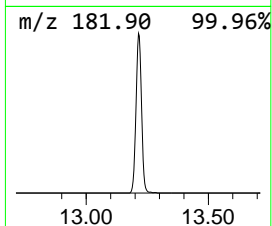
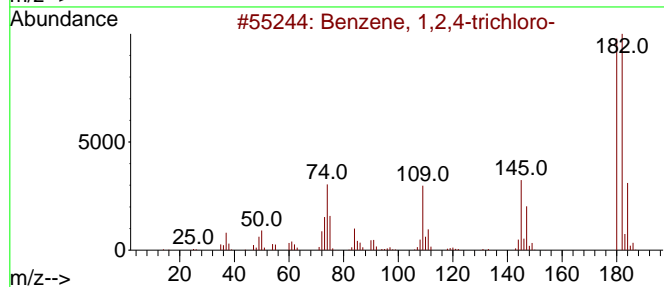
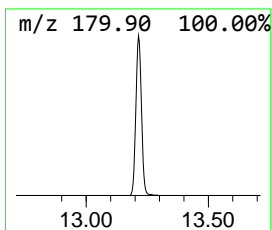
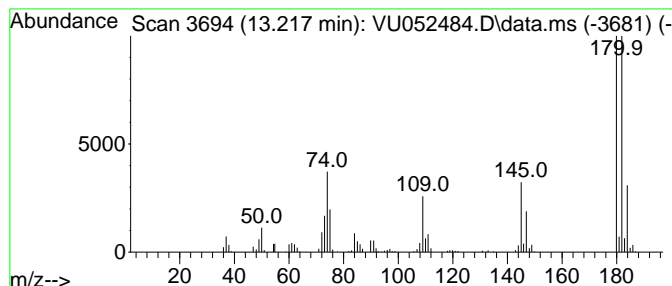
Quant Method : Z:\voasrv\HPCHEM1\MSVOA_U\Method\SFAMUTR122022WMA.M
 Quant Title : TRACE VOA SFAM1.0

TIC Library : C:\Database\NIST20.L
 TIC Integration Parameters: LSCINT.P

 Peak Number 1 Benzene, 1,3,5-trichloro- Concentration Rank 1

R.T.	EstConc	Area	Relative to ISTD	R.T.
13.214	3.61 ug/L	568068	1,4-Dichlorobenzene-d4	11.809

Hit#	of	5	Tentative ID	MW	MolForm	CAS#	Qual
1			Benzene, 1,2,4-trichloro-	180	C6H3Cl3	000120-82-1	98
2			Benzene, 1,2,3-trichloro-	180	C6H3Cl3	000087-61-6	98
3			Benzene, 1,3,5-trichloro-	180	C6H3Cl3	000108-70-3	97
4			Benzene, 1,3,5-trichloro-	180	C6H3Cl3	000108-70-3	96
5			Benzene, 1,2,3-trichloro-	180	C6H3Cl3	000087-61-6	96



Data Path : Z:\voasrv\HPCHEM1\MSVOA_U\Data\VU122222\
Data File : VU052484.D
Acq On : 22 Dec 2022 12:11
Operator : JC/MD
Sample : N6169-18
Misc : 25.0mL/MSVOA_U/WATER
ALS Vial : 5 Sample Multiplier: 1

Instrument :
MSVOA_U
ClientSampleId :
GBQA9

Quant Method : Z:\voasrv\HPCHEM1\MSVOA_U\Method\SFAMUTR122022WMA.M
Quant Title : TRACE VOA SFAM1.0

TIC Library : C:\Database\NIST0.L
TIC Integration Parameters: LSCINT.P

TIC Top Hit name	RT	EstConc	Units	Response	--Internal Standard--			
					#	RT	Resp	Conc
Benzene, 1,3,5-...	13.214	3.6	ug/L	568068	3	11.809	786203	5.0