

Data Path : Z:\voasrv\HPCHEM1\MSVOA_U\Data\VU122223\
 Data File : VU057230.D
 Acq On : 23 Dec 2023 08:17
 Operator : MD/SY
 Sample : 05979-14
 Misc : 25.0mL/MSVOA_U/WATER
 ALS Vial : 50 Sample Multiplier: 1

Instrument :
 MSVOA_U
ClientSampleId :
 BGR44

Quant Time: Dec 25 00:17:10 2023
 Quant Method : Z:\voasrv\HPCHEM1\MSVOA_U\Method\SFAMUTR122123WMA.M
 Quant Title : TRACE VOA SFAM1.0
 QLast Update : Sat Dec 23 00:27:07 2023
 Response via : Initial Calibration

Manual Integrations
APPROVED
 Reviewed By :Semsettin Yesilyurt 12/26/2023
 Supervised By :Mahesh Dadoda 12/26/2023

| Compound | R.T. | QIon | Response | Conc | Units | Dev(Min) |
|------------------------------------|--------|----------------|-----------|----------|----------|----------|
| Internal Standards | | | | | | |
| 1) 1,4-Difluorobenzene | 6.245 | 114 | 169876 | 5.000 | ug/L | 0.00 |
| 28) Chlorobenzene-d5 | 9.412 | 117 | 180454 | 5.000 | ug/L | 0.00 |
| 58) 1,4-Dichlorobenzene-d4 | 11.807 | 152 | 78437 | 5.000 | ug/L | 0.00 |
| System Monitoring Compounds | | | | | | |
| 4) Vinyl Chloride-d3 | 1.599 | 65 | 64893 | 3.997 | ug/L | 0.00 |
| Spiked Amount | 5.000 | Range 40 - 130 | Recovery | = | 80.000% | |
| 7) Chloroethane-d5 | 1.911 | 69 | 58281 | 4.361 | ug/L | 0.00 |
| Spiked Amount | 5.000 | Range 65 - 130 | Recovery | = | 87.200% | |
| 11) 1,1-Dichloroethene-d2 | 2.563 | 65 | 28917 | 4.111 | ug/L | 0.00 |
| Spiked Amount | 5.000 | Range 60 - 125 | Recovery | = | 82.200% | |
| 20) 2-Butanone-d5 | 4.621 | 46 | 141558 | 55.528 | ug/L | 0.00 |
| Spiked Amount | 50.000 | Range 40 - 130 | Recovery | = | 111.060% | |
| 24) Chloroform-d | 5.055 | 84 | 143446 | 4.575 | ug/L | 0.00 |
| Spiked Amount | 5.000 | Range 70 - 125 | Recovery | = | 91.400% | |
| 26) 1,2-Dichloroethane-d4 | 5.695 | 65 | 69140 | 4.627 | ug/L | 0.00 |
| Spiked Amount | 5.000 | Range 70 - 130 | Recovery | = | 92.600% | |
| 32) Benzene-d6 | 5.721 | 84 | 257895 | 4.167 | ug/L | 0.00 |
| Spiked Amount | 5.000 | Range 70 - 125 | Recovery | = | 83.400% | |
| 36) 1,2-Dichloropropane-d6 | 6.685 | 67 | 81918 | 4.651 | ug/L | 0.00 |
| Spiked Amount | 5.000 | Range 60 - 140 | Recovery | = | 93.000% | |
| 41) Toluene-d8 | 7.894 | 98 | 212986 | 3.769 | ug/L | 0.00 |
| Spiked Amount | 5.000 | Range 70 - 130 | Recovery | = | 75.400% | |
| 43) trans-1,3-Dichloroprop... | 8.174 | 79 | 29188 | 3.981 | ug/L | 0.00 |
| Spiked Amount | 5.000 | Range 55 - 130 | Recovery | = | 79.600% | |
| 46) 2-Hexanone-d5 | 8.627 | 63 | 134342 | 53.816 | ug/L | 0.00 |
| Spiked Amount | 50.000 | Range 45 - 130 | Recovery | = | 107.640% | |
| 56) 1,1,2,2-Tetrachloroeth... | 10.750 | 84 | 62747 | 5.006 | ug/L | 0.00 |
| Spiked Amount | 5.000 | Range 65 - 120 | Recovery | = | 100.200% | |
| 66) 1,2-Dichlorobenzene-d4 | 12.187 | 152 | 78013 | 4.622 | ug/L | 0.00 |
| Spiked Amount | 5.000 | Range 80 - 120 | Recovery | = | 92.400% | |
| Target Compounds | | | | | | |
| 22) cis-1,2-Dichloroethene | 4.663 | 96 | 3293 | 0.241 | ug/L | 91 |
| 47) Tetrachloroethene | 8.557 | 164 | 23432360m | 1954.710 | ug/L | |

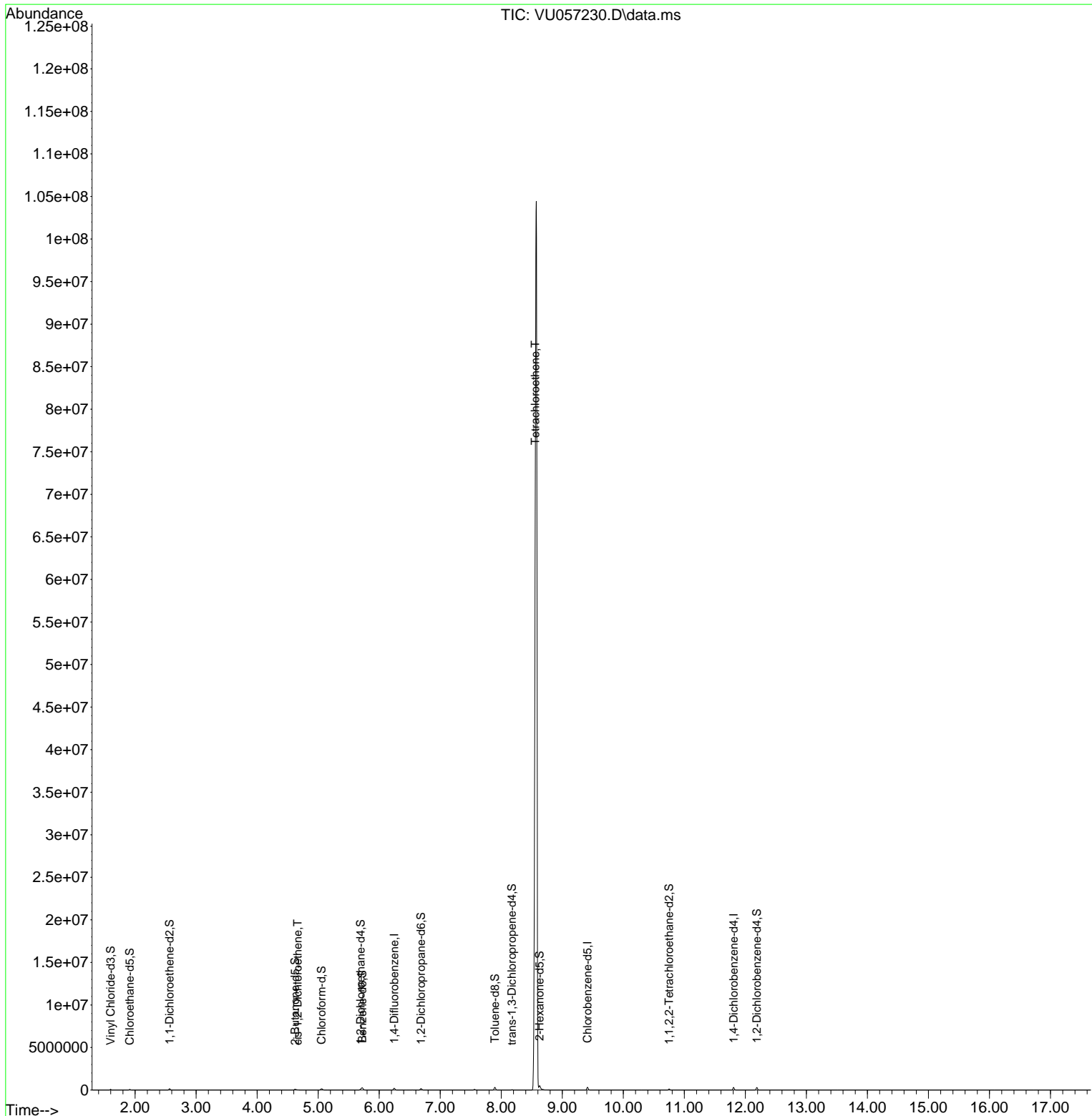
(#) = qualifier out of range (m) = manual integration (+) = signals summed

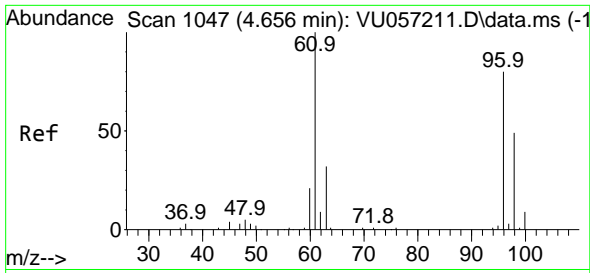
Data Path : Z:\voasrv\HPCHEM1\MSVOA_U\Data\VU122223\
 Data File : VU057230.D
 Acq On : 23 Dec 2023 08:17
 Operator : MD/SY
 Sample : 05979-14
 Misc : 25.0mL/MSVOA_U/WATER
 ALS Vial : 50 Sample Multiplier: 1

Instrument :
 MSVOA_U
ClientSampleId :
 BGR44

Quant Time: Dec 25 00:17:10 2023
 Quant Method : Z:\voasrv\HPCHEM1\MSVOA_U\Method\SFAMUTR122123WMA.M
 Quant Title : TRACE VOA SFAM1.0
 QLast Update : Sat Dec 23 00:27:07 2023
 Response via : Initial Calibration

Manual Integrations
APPROVED
 Reviewed By :Semsettin Yesilyurt 12/26/2023
 Supervised By :Mahesh Dadoda 12/26/2023





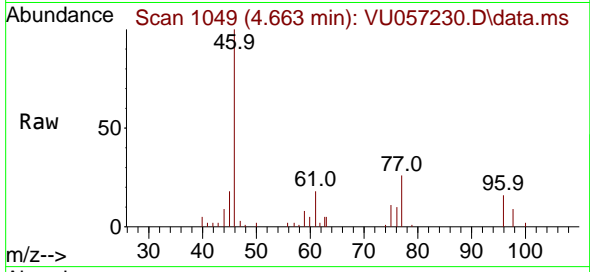
#22
 cis-1,2-Dichloroethene
 Concen: 0.241 ug/L
 RT: 4.663 min Scan# 1049
 Delta R.T. 0.007 min
 Lab File: VU057230.D
 Acq: 23 Dec 2023 08:17

Instrument :

MSVOA_U

Client Sampled :

BGR44

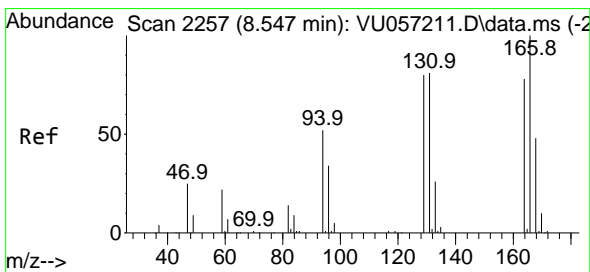
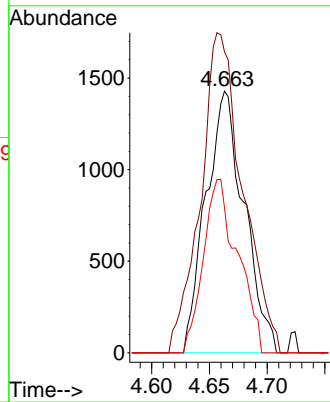
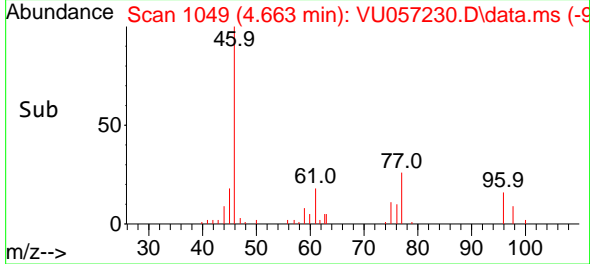


Tgt Ion: 96 Resp: 329
 Ion Ratio Lower Upper
 96 100
 61 115.0 86.8 161.2
 98 55.4 45.5 84.5

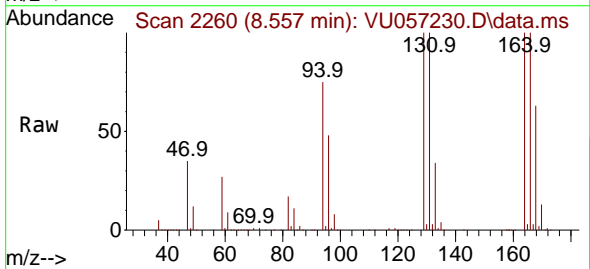
Manual Integrations

APPROVED

Reviewed By :Semsettin Yesilyurt 12/26/2023
 Supervised By :Mahesh Dadoda 12/26/2023



#47
 Tetrachloroethene
 Concen: 1954.710 ug/L m
 RT: 8.557 min Scan# 2260
 Delta R.T. 0.010 min
 Lab File: VU057230.D
 Acq: 23 Dec 2023 08:17



Tgt Ion:164 Resp:23432360
 Ion Ratio Lower Upper
 164 100
 129 100.0 72.9 135.3
 131 100.0 71.7 133.3
 166 100.0 87.7 162.9

