

Data Path : Z:\voasrv\HPCHEM1\MSVOA_U\Data\VU122321\
 Data File : VU046582.D
 Acq On : 23 Dec 2021 21:49
 Operator : SY/MD
 Sample : M5170-04
 Misc : 25.0mL/MSVOA_U/WATER
 ALS Vial : 16 Sample Multiplier: 1

Instrument :
 MSVOA_U
ClientSampleId :
 H0AO2

Manual Integrations
APPROVED
 Reviewed By :Amit Patel 12/24/2021
 Supervised By :Semsettin Yesilyurt 01/02/2022

Quant Time: Dec 24 04:58:58 2021
 Quant Method : Z:\voasrv\HPCHEM1\MSVOA_U\Method\SFAMUTR122121WMA.M
 Quant Title : TRACE VOA SFAM1.0
 QLast Update : Fri Dec 24 04:54:59 2021
 Response via : Initial Calibration

Compound	R.T.	QIon	Response	Conc	Units	Dev(Min)
Internal Standards						
1) 1,4-Difluorobenzene	6.253	114	77332	5.000	ug/L	0.00
28) Chlorobenzene-d5	9.420	117	76010	5.000	ug/L	0.00
58) 1,4-Dichlorobenzene-d4	11.812	152	38478	5.000	ug/L	0.00
System Monitoring Compounds						
4) Vinyl Chloride-d3	1.604	65	20835	3.420	ug/L	0.00
Spiked Amount	5.000	Range 40 - 130	Recovery	=	68.400%	
7) Chloroethane-d5	1.919	69	19120	3.986	ug/L	0.00
Spiked Amount	5.000	Range 65 - 130	Recovery	=	79.800%	
11) 1,1-Dichloroethene-d2	2.575	65	9276	3.611	ug/L	0.00
Spiked Amount	5.000	Range 60 - 125	Recovery	=	72.200%	
20) 2-Butanone-d5	4.655	46	101259	57.310	ug/L	0.00
Spiked Amount	50.000	Range 40 - 130	Recovery	=	114.620%	
24) Chloroform-d	5.067	84	48114	4.311	ug/L	0.00
Spiked Amount	5.000	Range 70 - 125	Recovery	=	86.200%	
26) 1,2-Dichloroethane-d4	5.706	65	29888	4.684	ug/L	0.00
Spiked Amount	5.000	Range 70 - 130	Recovery	=	93.600%	
32) Benzene-d6	5.732	84	86829	4.098	ug/L	0.00
Spiked Amount	5.000	Range 70 - 125	Recovery	=	82.000%	
36) 1,2-Dichloropropane-d6	6.694	67	28220	4.432	ug/L	0.00
Spiked Amount	5.000	Range 60 - 140	Recovery	=	88.600%	
41) Toluene-d8	7.899	98	71003	3.692	ug/L	0.00
Spiked Amount	5.000	Range 70 - 130	Recovery	=	73.800%	
43) trans-1,3-Dichloroprop...	8.182	79	11903	4.042	ug/L	0.00
Spiked Amount	5.000	Range 55 - 130	Recovery	=	80.800%	
46) 2-Hexanone-d5	8.636	63	93666	54.177	ug/L	0.00
Spiked Amount	50.000	Range 45 - 130	Recovery	=	108.360%	
56) 1,1,2,2-Tetrachloroeth...	10.758	84	31818	4.869	ug/L	0.00
Spiked Amount	5.000	Range 65 - 120	Recovery	=	97.400%	
66) 1,2-Dichlorobenzene-d4	12.192	152	33826	4.772	ug/L	0.00
Spiked Amount	5.000	Range 80 - 120	Recovery	=	95.400%	
Target Compounds						
13) Acetone	2.674	43	8149m	4.919	ug/L	
14) Carbon disulfide	2.800	76	6570	0.296	ug/L #	95
22) cis-1,2-Dichloroethene	4.671	96	1361	0.172	ug/L	86
33) Benzene	5.777	78	34189	1.132	ug/L	100
40) 4-Methyl-2-pentanone	7.796	43	8158	1.411	ug/L	97
42) Toluene	7.970	91	52861	1.705	ug/L	98
52) Ethylbenzene	9.571	91	16267	0.507	ug/L	95
53) m,p-Xylene	9.693	106	12997	1.057	ug/L	84
54) o-Xylene	10.102	106	4407	0.373	ug/L	77
60) Isopropylbenzene	10.484	105	1879	0.063	ug/L #	66
62) 1,3,5-Trimethylbenzene	11.089	105	8339	0.338	ug/L	97
63) 1,2,4-Trimethylbenzene	11.468	105	43060	1.733	ug/L	100

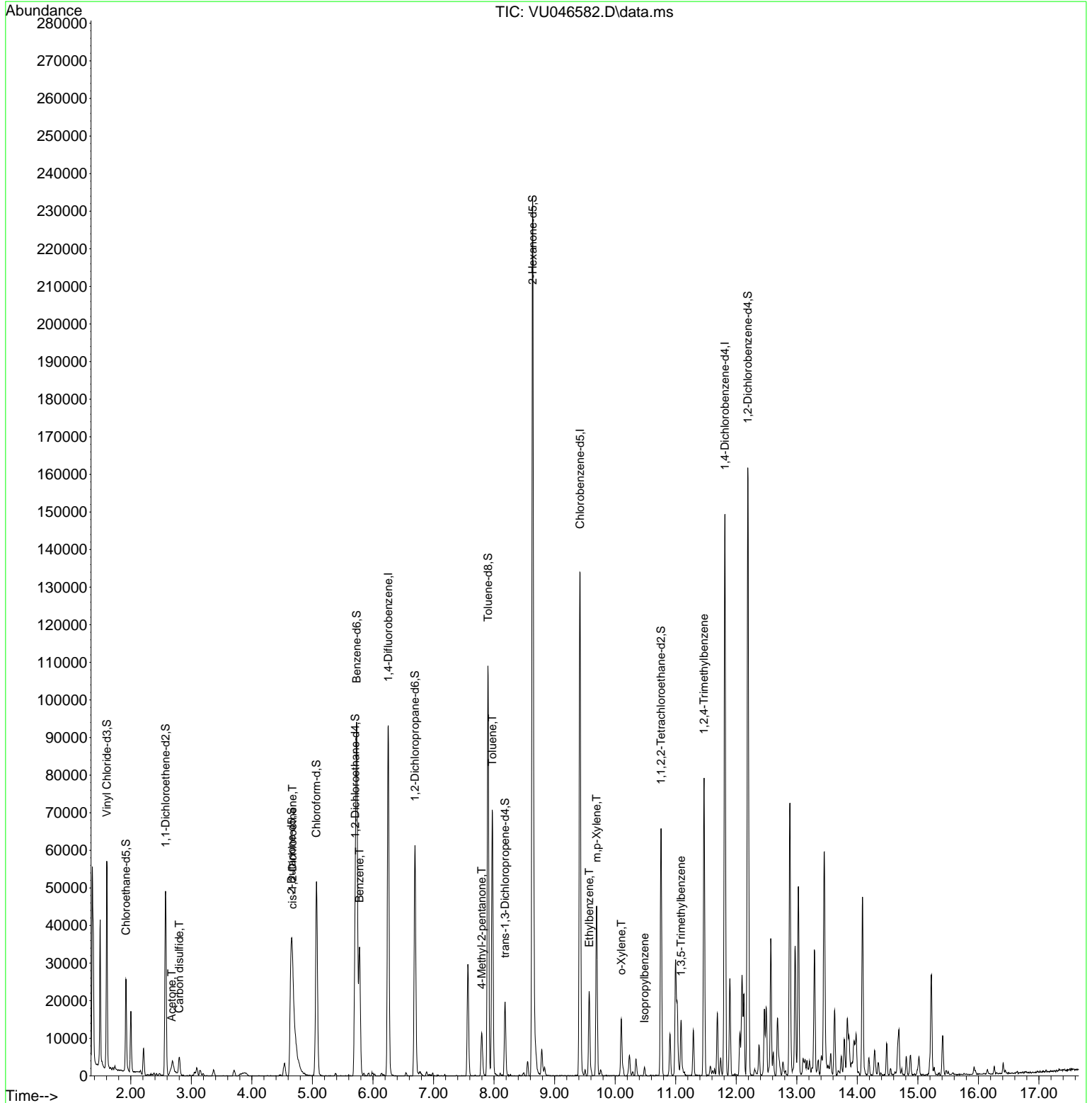
(#) = qualifier out of range (m) = manual integration (+) = signals summed

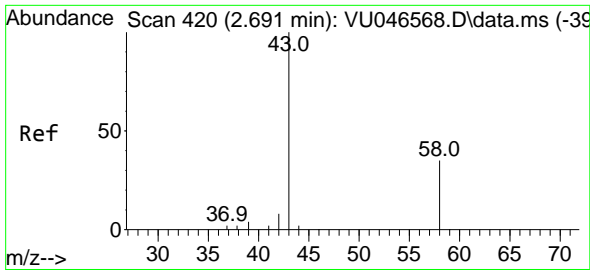
Data Path : Z:\voasrv\HPCHEM1\MSVOA_U\Data\VU122321\
 Data File : VU046582.D
 Acq On : 23 Dec 2021 21:49
 Operator : SY/MD
 Sample : M5170-04
 Misc : 25.0mL/MSVOA_U/WATER
 ALS Vial : 16 Sample Multiplier: 1

Instrument :
 MSVOA_U
ClientSampleId :
 H0AO2

Quant Time: Dec 24 04:58:58 2021
 Quant Method : Z:\voasrv\HPCHEM1\MSVOA_U\Method\SFAMUTR122121WMA.M
 Quant Title : TRACE VOA SFAM1.0
 QLast Update : Fri Dec 24 04:54:59 2021
 Response via : Initial Calibration

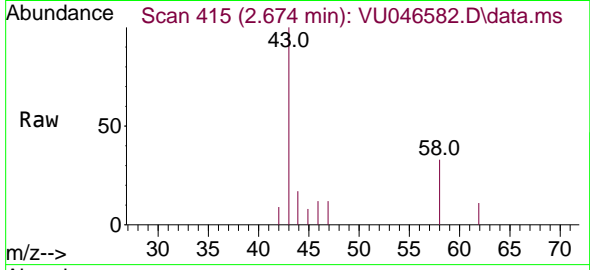
Manual Integrations
APPROVED
 Reviewed By :Amit Patel 12/24/2021
 Supervised By :Semsettin Yesilyurt 01/02/2022





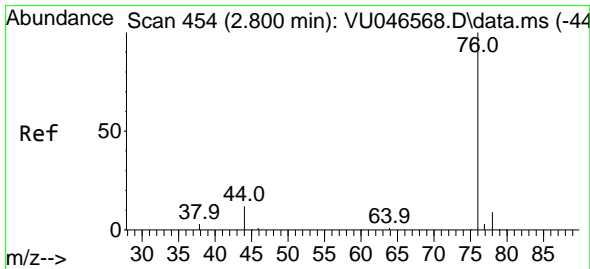
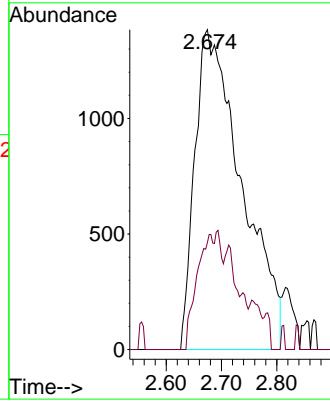
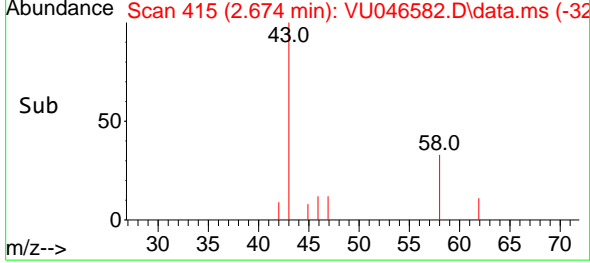
#13
 Acetone
 Concen: 4.919 ug/L m
 RT: 2.674 min Scan# 415
 Delta R.T. -0.019 min
 Lab File: VU046582.D
 Acq: 23 Dec 2021 21:49

Instrument : MSVOA_U
 ClientSampleId : H0AO2

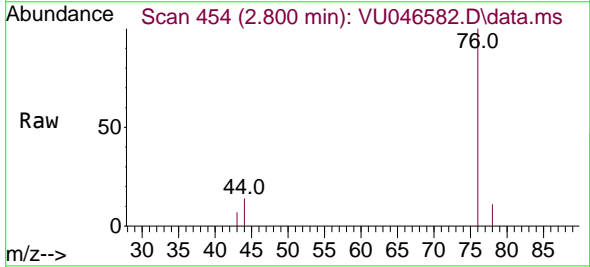


Tgt Ion: 43 Resp: 8149
 Ion Ratio Lower Upper
 43 100
 58 13.4 0.0 71.6

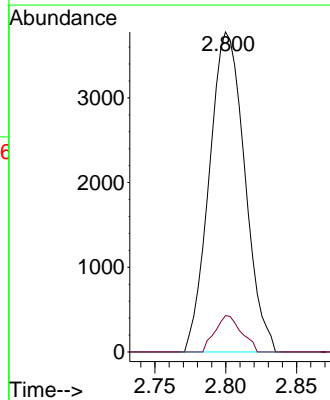
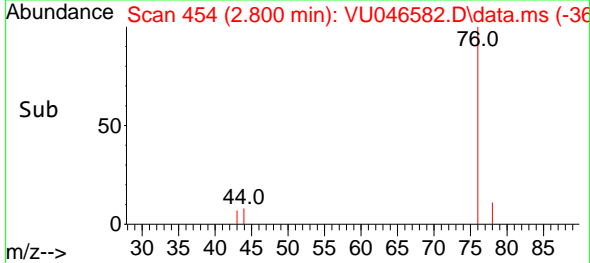
Manual Integrations
APPROVED
 Reviewed By :Amit Patel 12/24/2021
 Supervised By :Semsettin Yesilyurt 01/02/2022

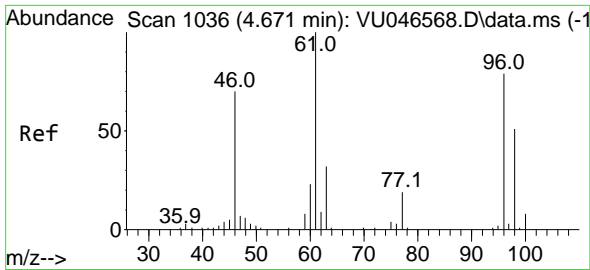


#14
 Carbon disulfide
 Concen: 0.296 ug/L
 RT: 2.800 min Scan# 454
 Delta R.T. -0.000 min
 Lab File: VU046582.D
 Acq: 23 Dec 2021 21:49



Tgt Ion: 76 Resp: 6570
 Ion Ratio Lower Upper
 76 100
 78 11.4 7.5 11.3#





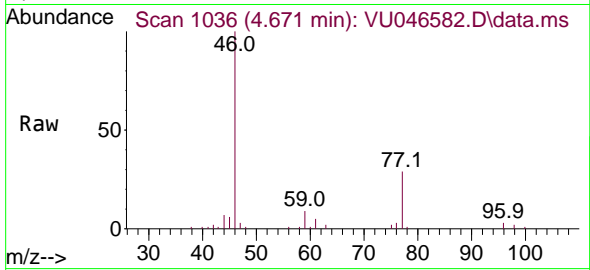
#22
 cis-1,2-Dichloroethene
 Concen: 0.172 ug/L
 RT: 4.671 min Scan# 1036
 Delta R.T. -0.003 min
 Lab File: VU046582.D
 Acq: 23 Dec 2021 21:49

Instrument :

MSVOA_U

ClientSampleID :

H0AO2



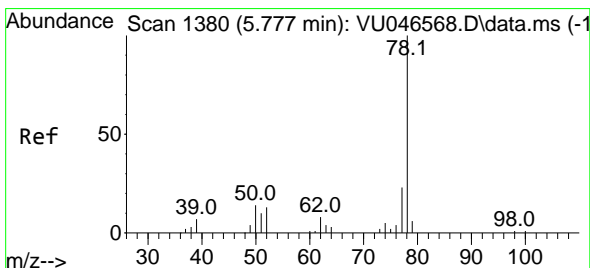
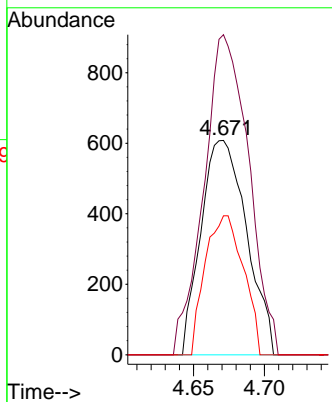
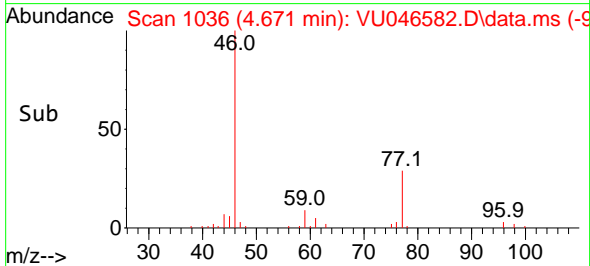
Tgt Ion: 96 Resp: 136
 Ion Ratio Lower Upper
 96 100
 61 149.3 88.5 164.3
 98 64.8 44.4 82.5

Manual Integrations

APPROVED

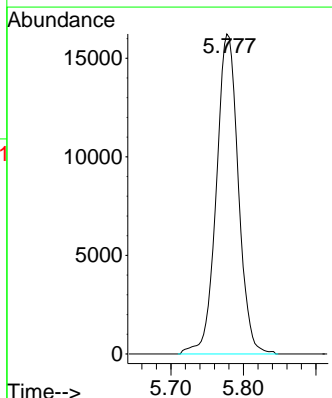
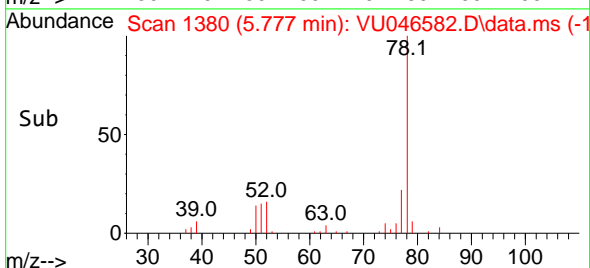
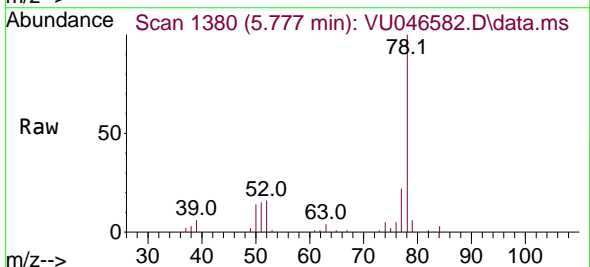
Reviewed By :Amit Patel 12/24/2021

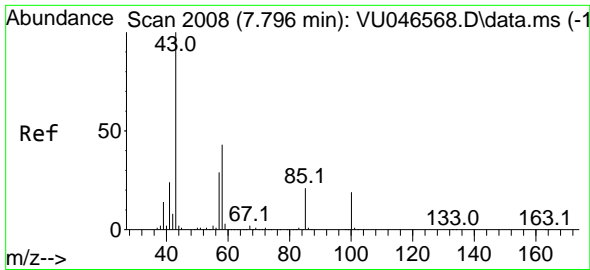
Supervised By :Semsettin Yesilyurt 01/02/2022



#33
 Benzene
 Concen: 1.132 ug/L
 RT: 5.777 min Scan# 1380
 Delta R.T. -0.000 min
 Lab File: VU046582.D
 Acq: 23 Dec 2021 21:49

Tgt Ion: 78 Resp: 34189





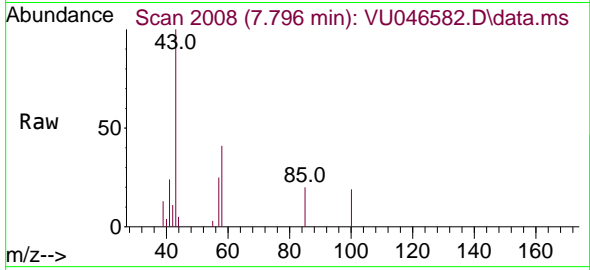
#40
 4-Methyl-2-pentanone
 Concen: 1.411 ug/L
 RT: 7.796 min Scan# 2008
 Delta R.T. -0.000 min
 Lab File: VU046582.D
 Acq: 23 Dec 2021 21:49

Instrument :

MSVOA_U

ClientSampleID :

H0AO2



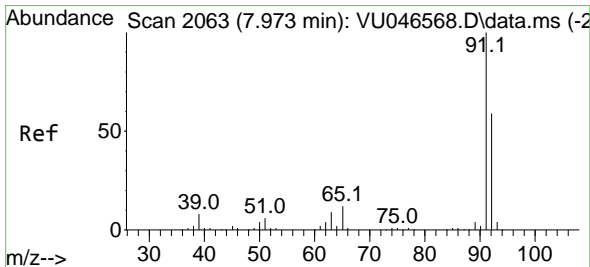
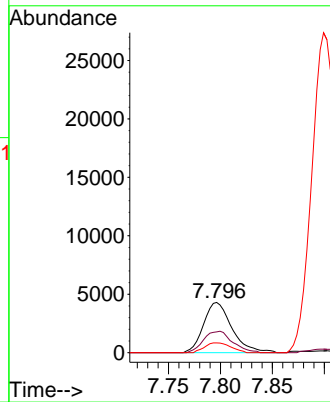
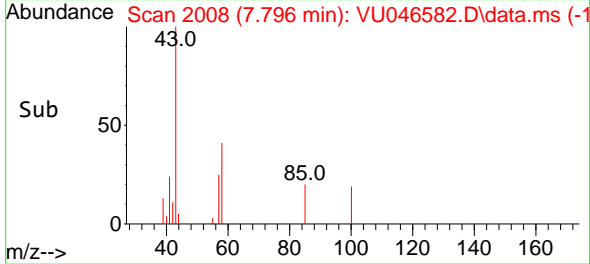
Tgt Ion: 43 Resp: 815
 Ion Ratio Lower Upper
 43 100
 58 43.4 33.1 49.7
 100 18.0 13.2 19.8

Manual Integrations

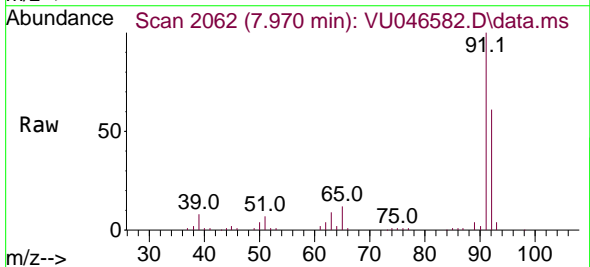
APPROVED

Reviewed By :Amit Patel 12/24/2021

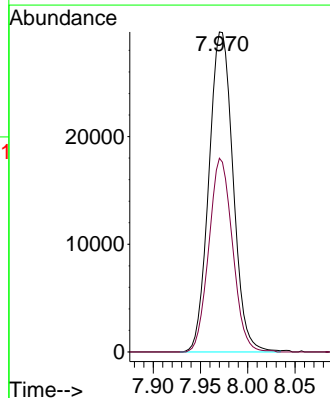
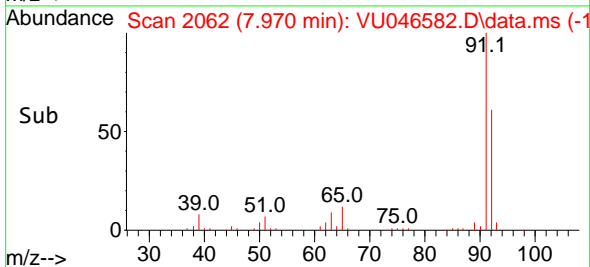
Supervised By :Semsettin Yesilyurt 01/02/2022

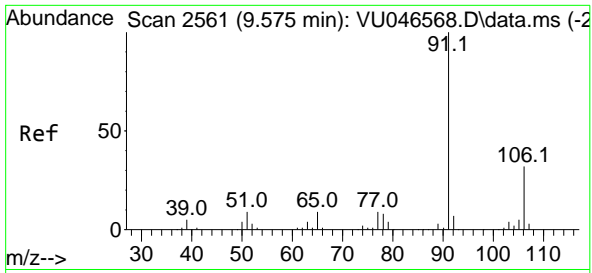


#42
 Toluene
 Concen: 1.705 ug/L
 RT: 7.970 min Scan# 2062
 Delta R.T. -0.003 min
 Lab File: VU046582.D
 Acq: 23 Dec 2021 21:49



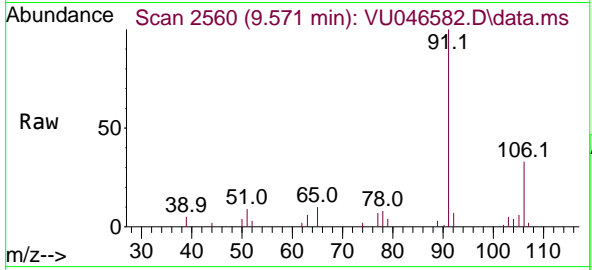
Tgt Ion: 91 Resp: 52861
 Ion Ratio Lower Upper
 91 100
 92 60.5 41.3 76.7





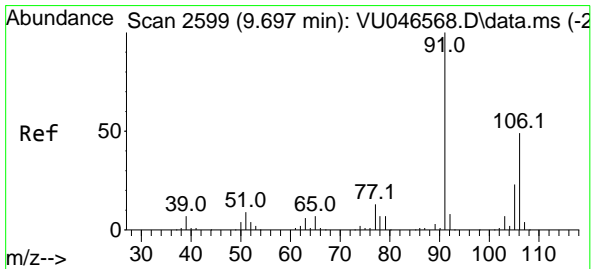
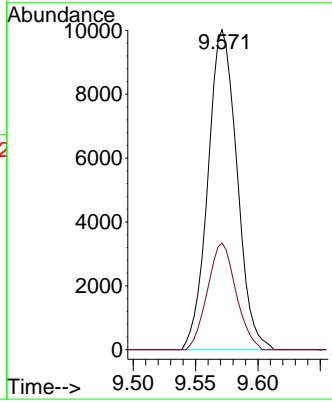
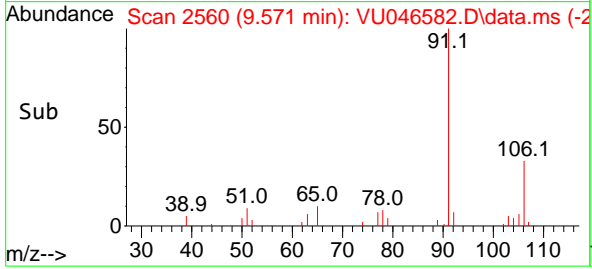
#52
 Ethylbenzene
 Concen: 0.507 ug/L
 RT: 9.571 min Scan# 2561
 Delta R.T. -0.000 min
 Lab File: VU046582.D
 Acq: 23 Dec 2021 21:49

Instrument : MSVOA_U
 Client Sampled : H0AO2

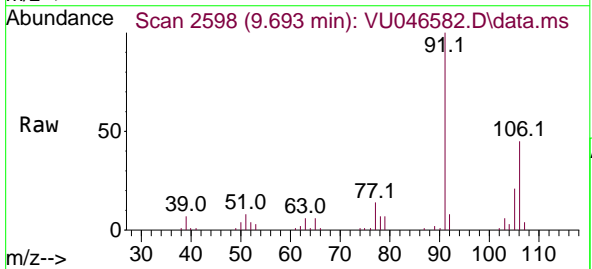


Tgt Ion: 91 Resp: 1626
 Ion Ratio Lower Upper
 91 100
 106 33.4 21.5 39.9

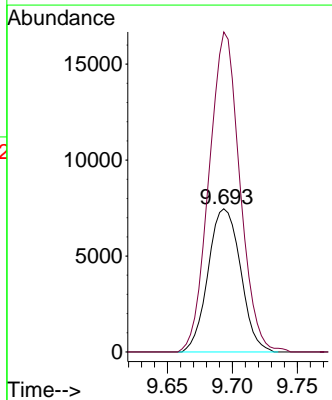
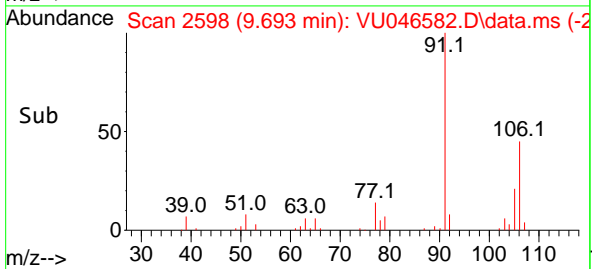
Manual Integrations
APPROVED
 Reviewed By :Amit Patel 12/24/2021
 Supervised By :Semsettin Yesilyurt 01/02/2022

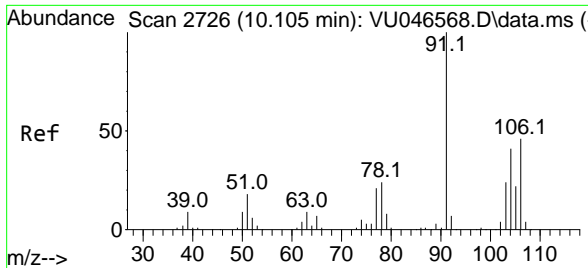


#53
 m,p-Xylene
 Concen: 1.057 ug/L
 RT: 9.693 min Scan# 2598
 Delta R.T. -0.003 min
 Lab File: VU046582.D
 Acq: 23 Dec 2021 21:49



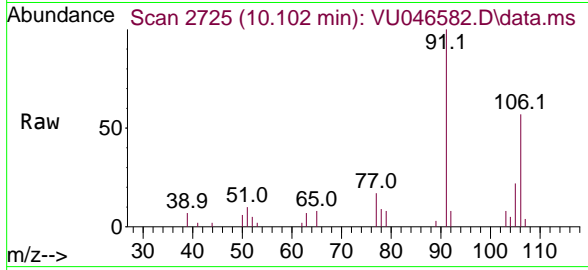
Tgt Ion:106 Resp: 12997
 Ion Ratio Lower Upper
 106 100
 91 223.5 139.4 259.0





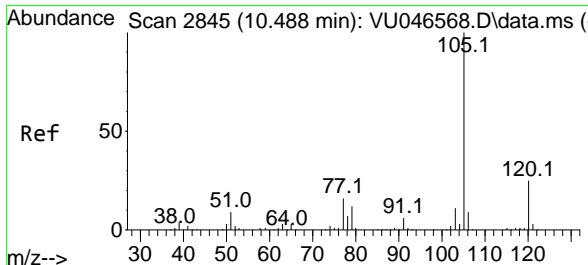
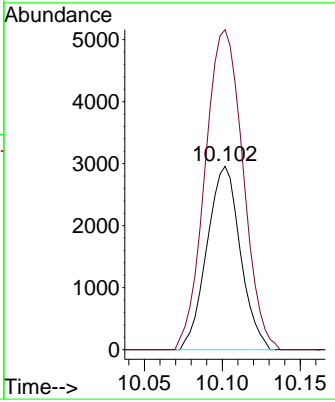
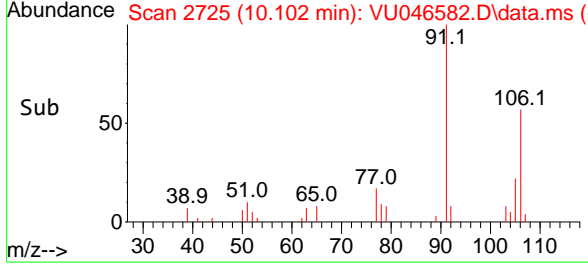
#54
 o-Xylene
 Concen: 0.373 ug/L
 RT: 10.102 min Scan# 21
 Delta R.T. -0.000 min
 Lab File: VU046582.D
 Acq: 23 Dec 2021 21:49

Instrument : MSVOA_U
 ClientSampleId : H0AO2

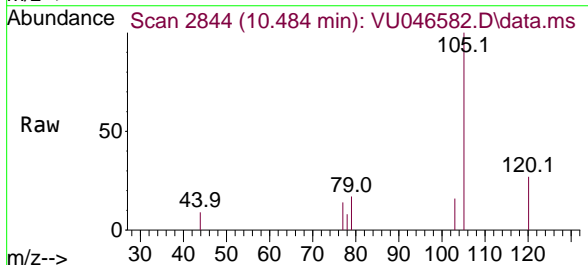


Tgt Ion:106 Resp: 440
 Ion Ratio Lower Upper
 106 100
 91 174.5 147.5 273.9

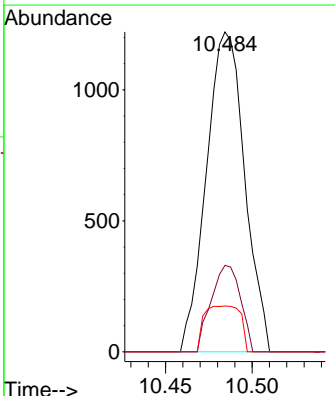
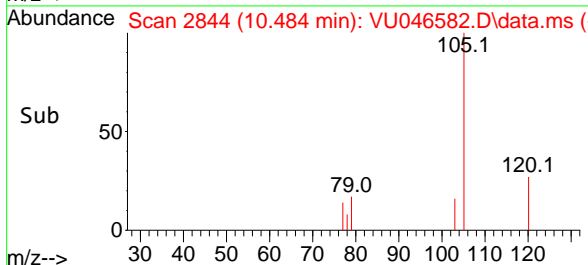
Manual Integrations
APPROVED
 Reviewed By :Amit Patel 12/24/2021
 Supervised By :Semsettin Yesilyurt 01/02/2022

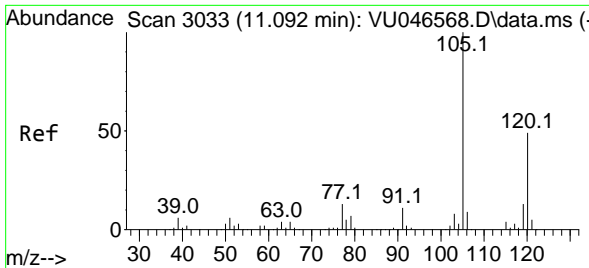


#60
 Isopropylbenzene
 Concen: 0.063 ug/L
 RT: 10.484 min Scan# 2844
 Delta R.T. -0.003 min
 Lab File: VU046582.D
 Acq: 23 Dec 2021 21:49



Tgt Ion:105 Resp: 1879
 Ion Ratio Lower Upper
 105 100
 120 0.0 20.7 31.1#
 77 13.5 12.6 19.0





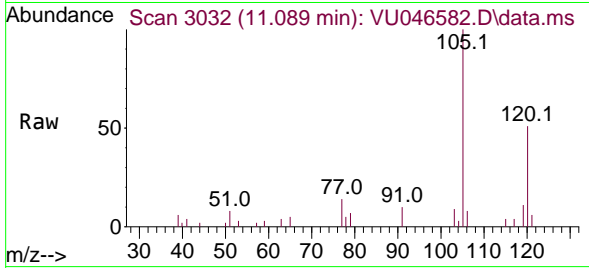
#62
 1,3,5-Trimethylbenzene
 Concen: 0.338 ug/L
 RT: 11.089 min Scan# 3033
 Delta R.T. -0.000 min
 Lab File: VU046582.D
 Acq: 23 Dec 2021 21:49

Instrument :

MSVOA_U

ClientSampleId :

H0AO2



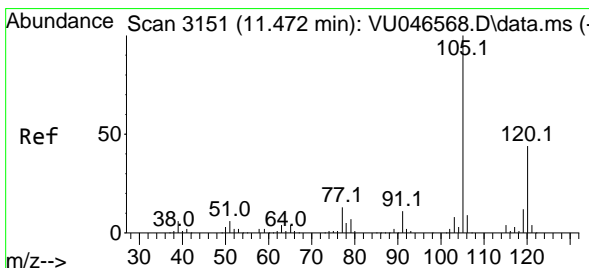
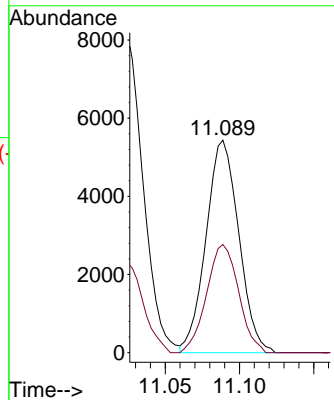
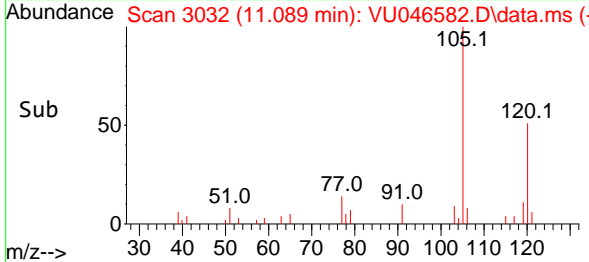
Tgt Ion:105 Resp: 8339
 Ion Ratio Lower Upper
 105 100
 120 49.6 38.3 57.5

Manual Integrations

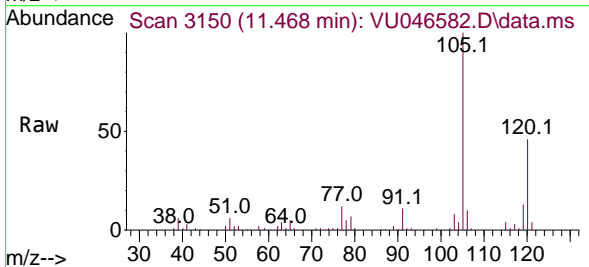
APPROVED

Reviewed By :Amit Patel 12/24/2021

Supervised By :Semsettin Yesilyurt 01/02/2022



#63
 1,2,4-Trimethylbenzene
 Concen: 1.733 ug/L
 RT: 11.468 min Scan# 3150
 Delta R.T. -0.000 min
 Lab File: VU046582.D
 Acq: 23 Dec 2021 21:49



Tgt Ion:105 Resp: 43060
 Ion Ratio Lower Upper
 105 100
 120 45.0 35.8 53.8

