

Data File : VU028961.D
 Acq On : 27 Dec 2018 11:56
 Operator : MD/SY
 Sample : J6507-03ME
 Misc : 6.02g/5mL/100uL/5.0mL/MSVOA_U/MEOH
 ALS Vial : 9 Sample Multiplier: 1

Instrument :
 MSVOA_U
 ClientSampleId :
 BF000ME

Quant Time: Dec 28 00:50:50 2018
 Quant Method : Z:\VOASRV\HPCHEM1\MSVOA_U\METHOD\SOMULM122018WMA.M
 Quant Title : VOC Analysis
 QLast Update : Fri Dec 28 00:46:50 2018
 Response via : Initial Calibration

Internal Standards	R.T.	QIon	Response	Conc	Units	Dev(Min)
1) 1,4-Difluorobenzene	5.88	114	240879	50.00	ug/L	0.00
28) Chlorobenzene-d5	9.09	117	230541	50.00	ug/L	0.00
60) 1,4-Dichlorobenzene-d4	11.48	152	114553	50.00	ug/L	0.00

System Monitoring Compounds

4) Vinyl Chloride-d3	1.40	65	60589	31.38	ug/L	0.00
Spiked Amount	50.000	Range	60 - 135	Recovery	=	62.76%
7) Chloroethane-d5	1.64	69	33800	22.66	ug/L	-0.03
Spiked Amount	50.000	Range	70 - 130	Recovery	=	45.32%#
11) 1,1-Dichloroethene-d2	2.23	63	95094	29.28	ug/L	-0.04
Spiked Amount	50.000	Range	60 - 125	Recovery	=	58.56%#
21) 2-Butanone-d5	4.19	46	118615	87.67	ug/L	0.02
Spiked Amount	100.000	Range	40 - 130	Recovery	=	87.67%
24) Chloroform-d	4.64	84	130153	42.86	ug/L	0.00
Spiked Amount	50.000	Range	70 - 125	Recovery	=	85.72%
26) 1,2-Dichloroethane-d4	5.30	65	82882	44.28	ug/L	0.00
Spiked Amount	50.000	Range	70 - 125	Recovery	=	88.56%
32) Benzene-d6	5.33	84	281098	43.16	ug/L	0.00
Spiked Amount	50.000	Range	70 - 125	Recovery	=	86.32%
36) 1,2-Dichloropropane-d6	6.32	67	95970	43.37	ug/L	0.00
Spiked Amount	50.000	Range	70 - 120	Recovery	=	86.74%
41) Toluene-d8	7.56	98	260017	44.05	ug/L	0.00
Spiked Amount	50.000	Range	80 - 120	Recovery	=	88.10%
43) trans-1,3-Dichloropropene-	7.85	79	45860	46.26	ug/L	0.00
Spiked Amount	50.000	Range	60 - 125	Recovery	=	92.52%
47) 2-Hexanone-d5	8.32	63	110127	104.80	ug/L	0.02
Spiked Amount	100.000	Range	45 - 130	Recovery	=	104.80%
57) 1,1,2,2-Tetrachloroethane-	10.44	84	157228	51.22	ug/L	0.00
Spiked Amount	50.000	Range	65 - 120	Recovery	=	102.44%
64) 1,2-Dichlorobenzene-d4	11.86	152	115737	49.95	ug/L	0.00
Spiked Amount	50.000	Range	80 - 120	Recovery	=	99.90%

Target Compounds

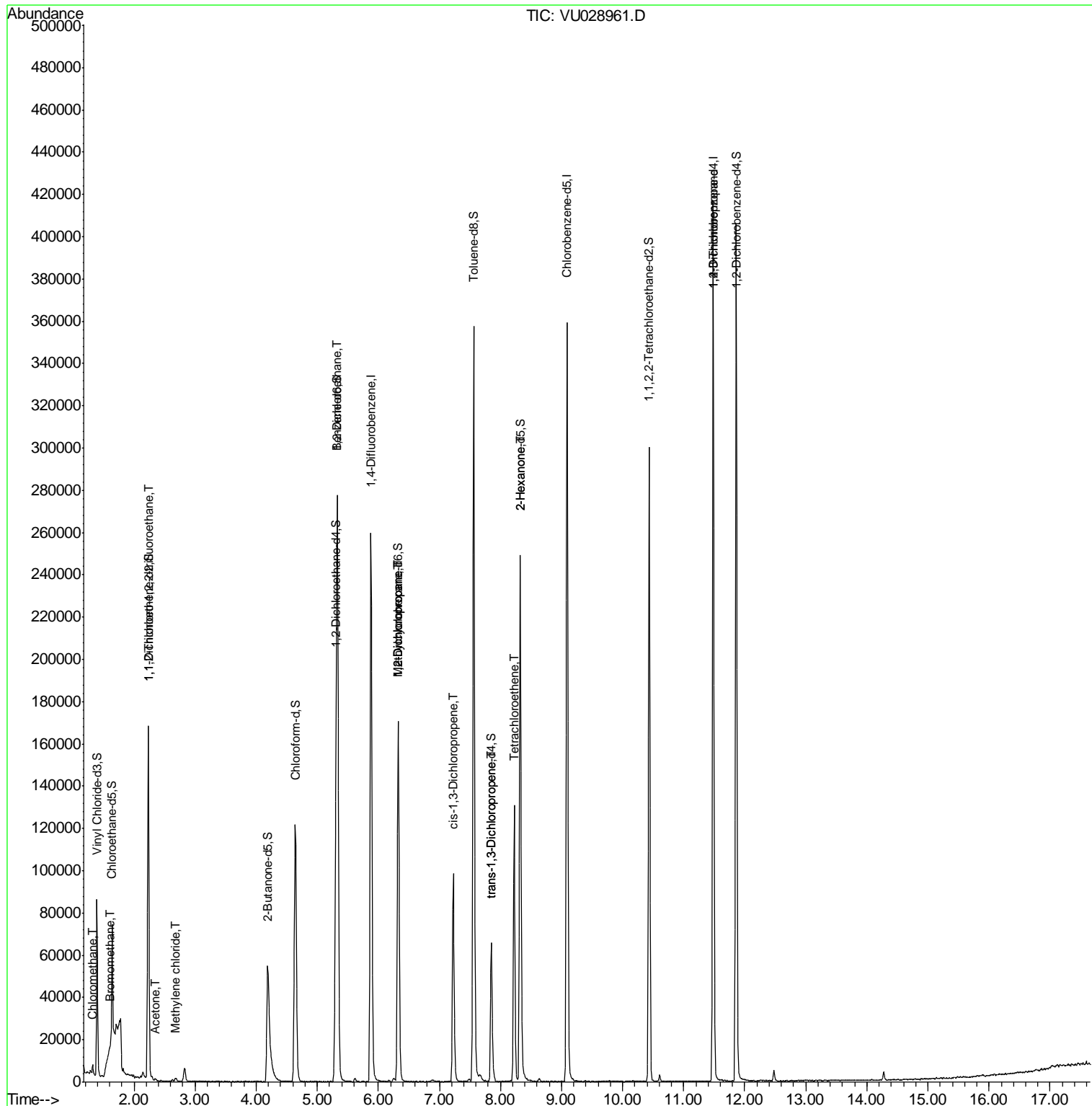
						Qvalue
3) Chloromethane	1.32	50	3293	1.233	ug/L	96
6) Bromomethane	1.60	94	683	0.680	ug/L #	69
10) 1,1,2-Trichloro-1,2,2-trif	2.24	101	1133	0.726	ug/L #	20
13) Acetone	2.35	43	1199	0.870	ug/L	72
16) Methylene chloride	2.68	84	1070	0.562	ug/L	78
27) 1,2-Dichloroethane	5.33	62	1310	0.569	ug/L #	74
35) Methylcyclohexane	6.33	83	21154	7.168	ug/L #	18
37) 1,2-Dichloropropane	6.32	63	9095	4.433	ug/L #	90
39) cis-1,3-Dichloropropene	7.22	75	2239	0.765	ug/L #	59
44) trans-1,3-Dichloropropene	7.85	75	1841	0.706	ug/L	84
46) Tetrachloroethene	8.22	164	32603	23.890	ug/L	96
48) 2-Hexanone	8.32	43	10243	4.526	ug/L #	64
59) 1,2,3-Trichloropropane	11.48	75	12609	5.150	ug/L	97

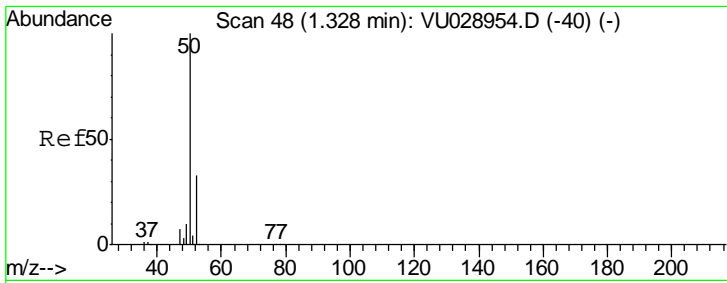
(#) = qualifier out of range (m) = manual integration (+) = signals summed

Data File : VU028961.D
Acq On : 27 Dec 2018 11:56
Operator : MD/SY
Sample : J6507-03ME
Misc : 6.02g/5mL/100uL/5.0mL/MSVOA_U/MEOH
ALS Vial : 9 Sample Multiplier: 1

Instrument :
MSVOA_U
Client Sampled :
BF000ME

Quant Time: Dec 28 00:50:50 2018
Quant Method : Z:\VOASRV\HPCHEM1\MSVOA_U\METHOD\SOMULM122018WMA.M
Quant Title : VOC Analysis
QLast Update : Fri Dec 28 00:46:50 2018
Response via : Initial Calibration

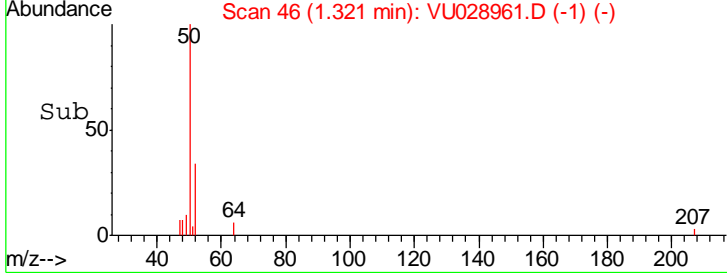
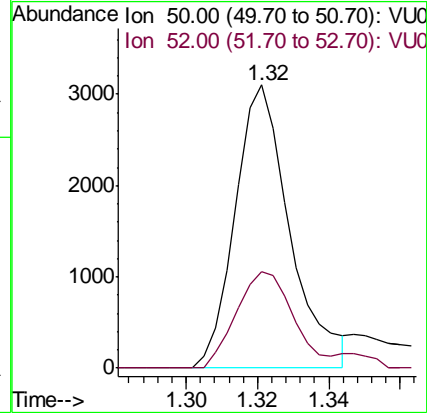
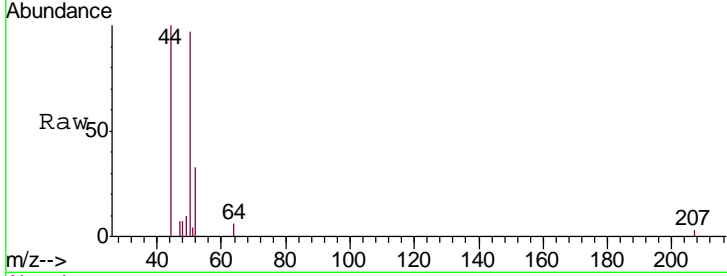




#3
 Chloromethane
 Concen: 1.233 ug/L
 RT: 1.32 min Scan# 46
 Delta R.T. -0.01 min
 Lab File: VU028961.D
 Acq: 27 Dec 2018 11:56

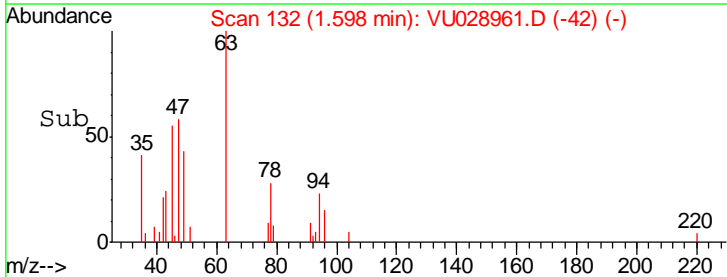
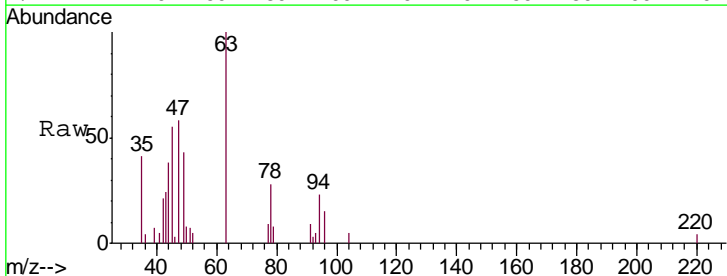
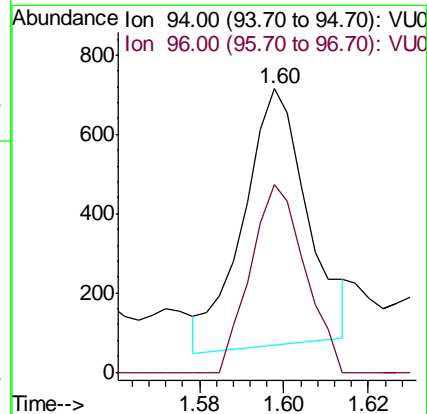
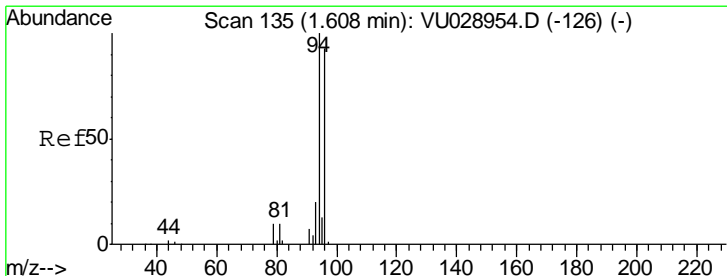
Instrument :
 MSVOA_U
ClientSampled :
 BF000ME

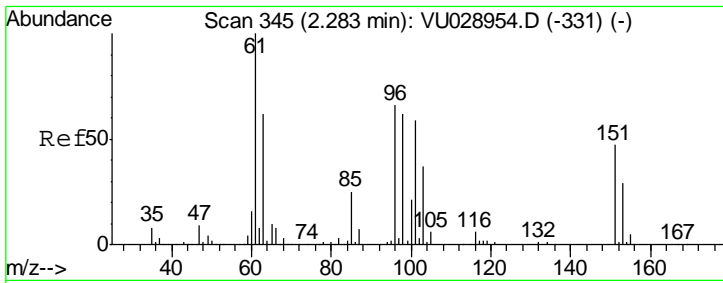
Tgt Ion: 50 Resp: 3293
 Ion Ratio Lower Upper
 50 100
 52 34.2 22.3 41.3



#6
 Bromomethane
 Concen: 0.680 ug/L
 RT: 1.60 min Scan# 132
 Delta R.T. -0.01 min
 Lab File: VU028961.D
 Acq: 27 Dec 2018 11:56

Tgt Ion: 94 Resp: 683
 Ion Ratio Lower Upper
 94 100
 96 66.0 67.3 125.1#

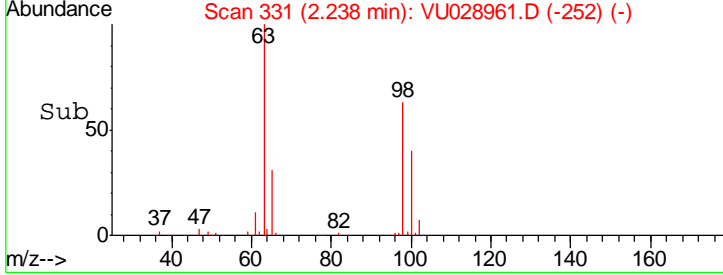
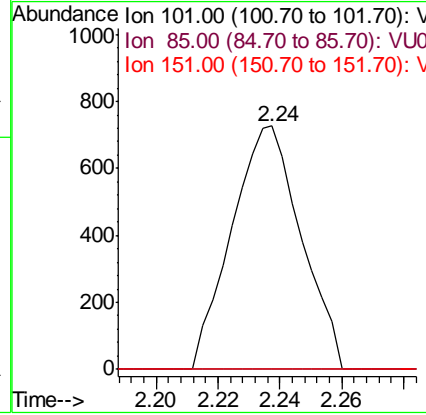
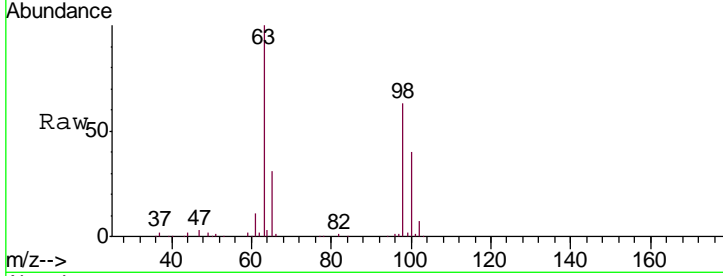




#10
 1,1,2-Trichloro-1,2,2-trifluoroethane
 Concen: 0.726 ug/L
 RT: 2.24 min Scan# 331
 Delta R.T. -0.05 min
 Lab File: VU028961.D
 Acq: 27 Dec 2018 11:56

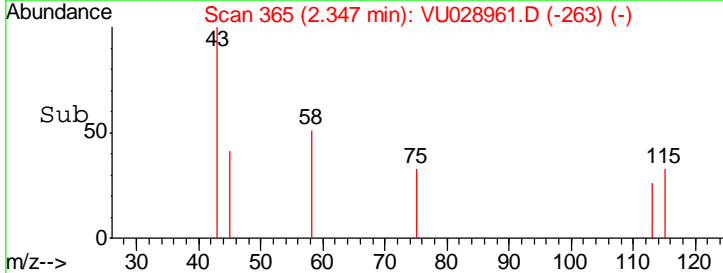
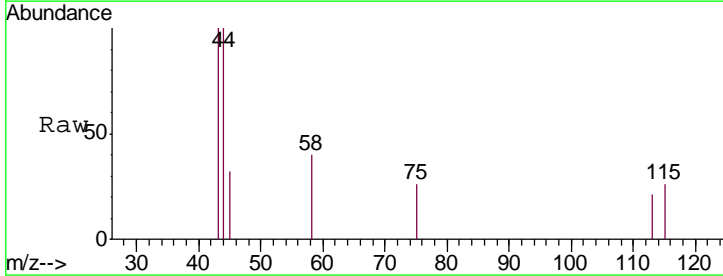
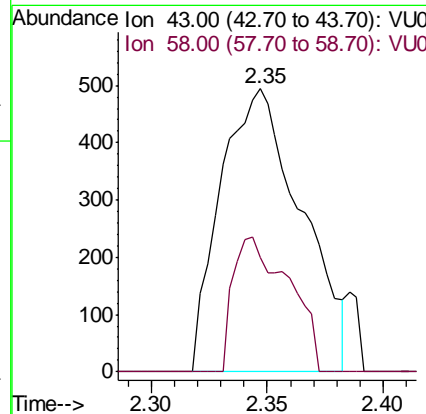
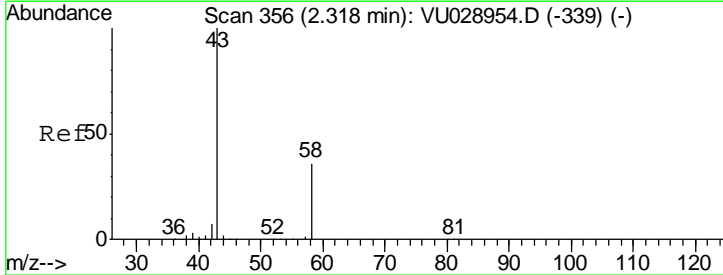
Instrument :
 MSVOA_U
ClientSampled :
 BF000ME

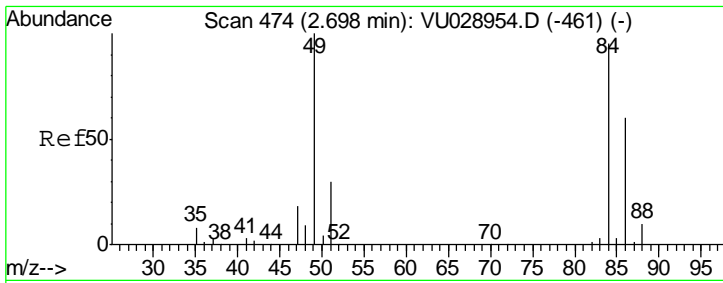
Tgt Ion	Resp	Lower	Upper
101	1133		
85	0.0	33.8	50.6#
151	0.0	59.4	89.0#



#13
 Acetone
 Concen: 0.870 ug/L
 RT: 2.35 min Scan# 365
 Delta R.T. 0.03 min
 Lab File: VU028961.D
 Acq: 27 Dec 2018 11:56

Tgt Ion	Resp	Lower	Upper
43	1199		
58	18.9	0.0	70.2

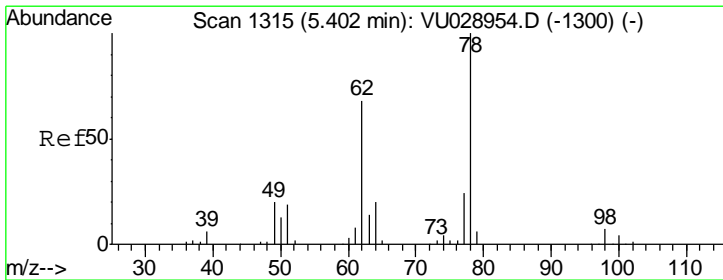
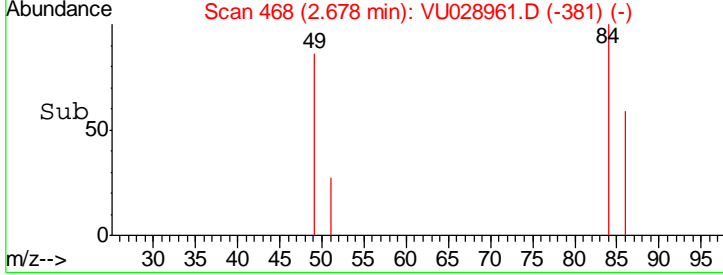
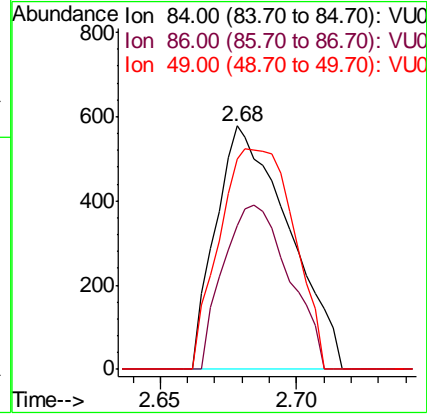
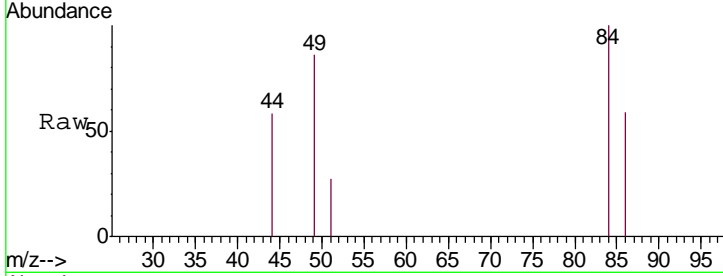




#16
 Methylene chloride
 Concen: 0.562 ug/L
 RT: 2.68 min Scan# 468
 Delta R.T. -0.02 min
 Lab File: VU028961.D
 Acq: 27 Dec 2018 11:56

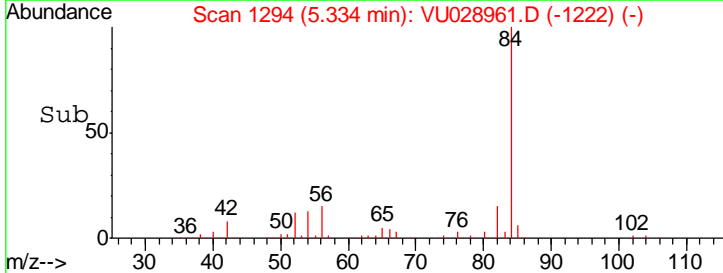
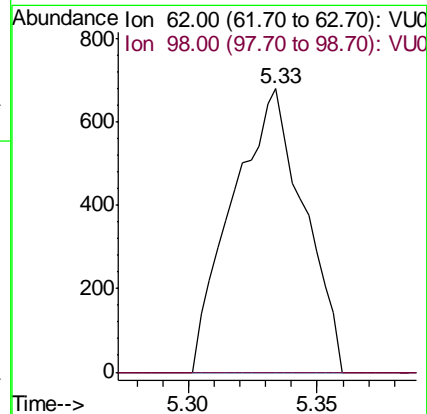
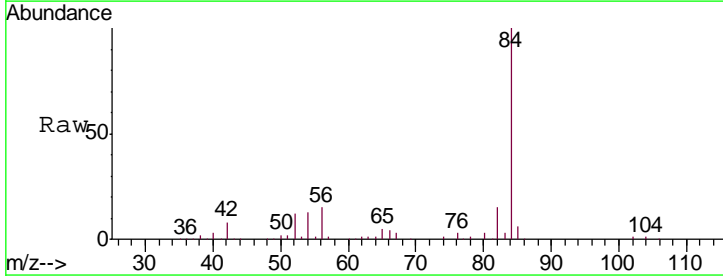
Instrument : MSVOA_U
 ClientSampled : BF000ME

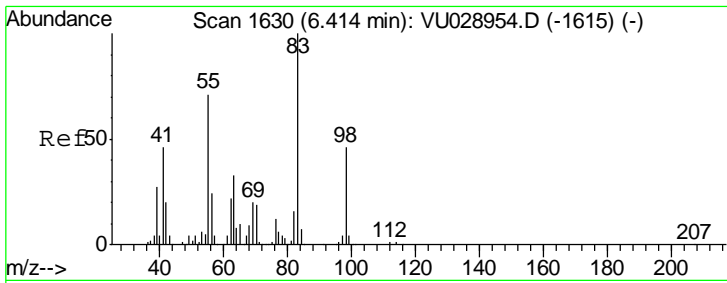
Tgt Ion	Resp	Ion Ratio	Lower	Upper
84	1070	100		
86		59.0	44.9	83.3
49		86.3	83.9	155.7



#27
 1,2-Dichloroethane
 Concen: 0.569 ug/L
 RT: 5.33 min Scan# 1294
 Delta R.T. -0.07 min
 Lab File: VU028961.D
 Acq: 27 Dec 2018 11:56

Tgt Ion	Resp	Ion Ratio	Lower	Upper
62	1310	100		
98		0.0	7.5	11.3#

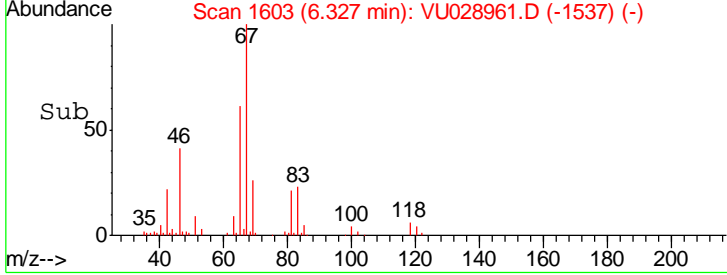
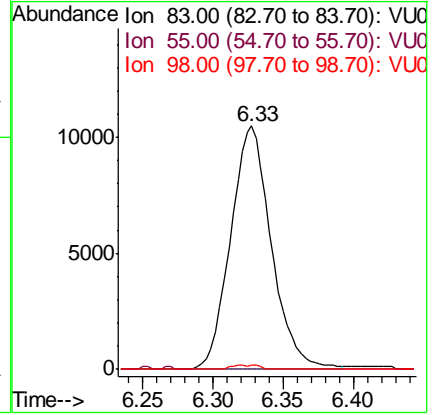
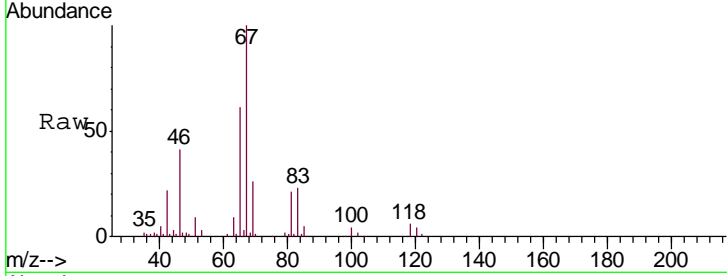




#35
 Methylcyclohexane
 Concen: 7.168 ug/L
 RT: 6.33 min Scan# 1603
 Delta R.T. -0.09 min
 Lab File: VU028961.D
 Acq: 27 Dec 2018 11:56

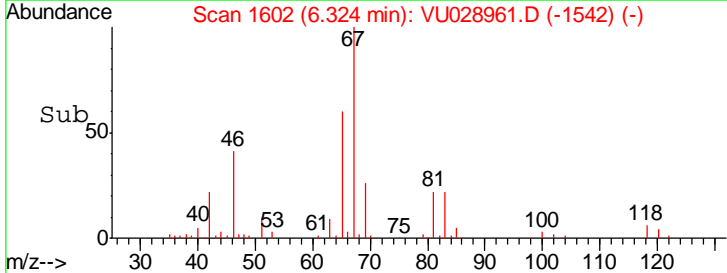
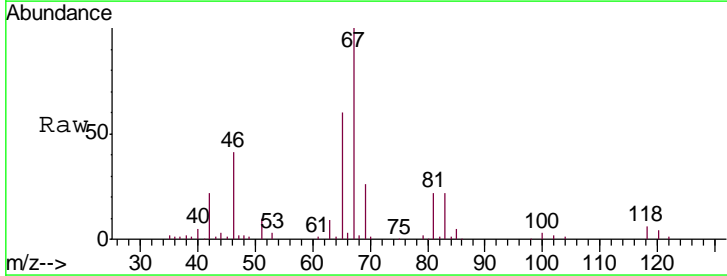
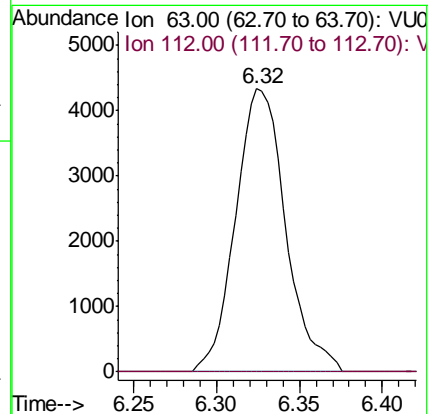
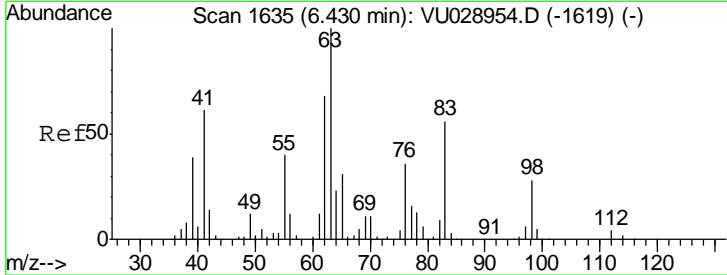
Instrument :
 MSVOA_U
 ClientSampled :
 BF000ME

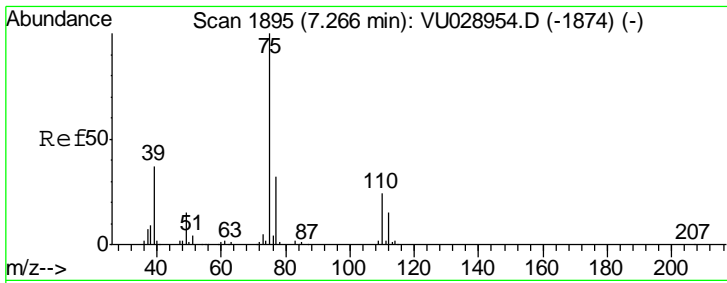
Tgt Ion	Resp	Lower	Upper
83	100		
55	0.2	63.7	95.5#
98	0.7	35.6	53.4#



#37
 1,2-Dichloropropane
 Concen: 4.433 ug/L
 RT: 6.32 min Scan# 1602
 Delta R.T. -0.11 min
 Lab File: VU028961.D
 Acq: 27 Dec 2018 11:56

Tgt Ion	Resp	Lower	Upper
63	100		
112	0.0	2.7	4.1#

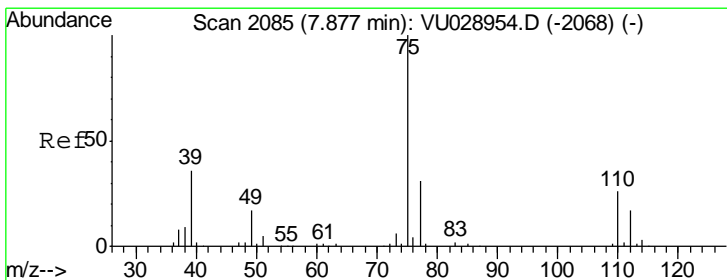
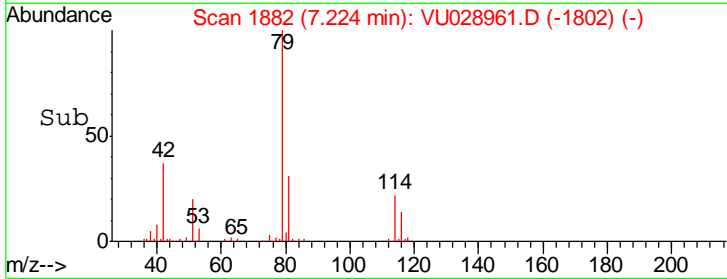
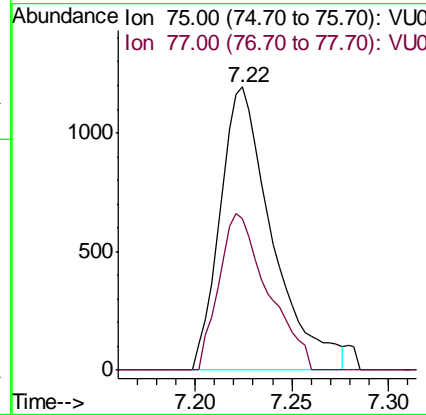
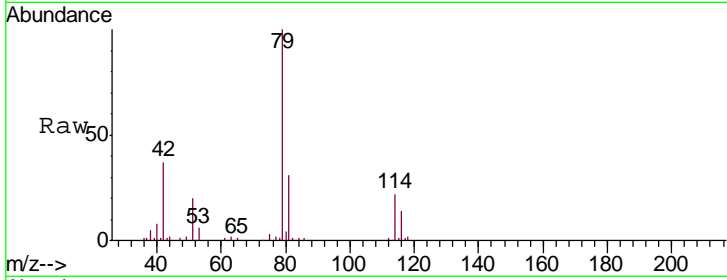




#39
 cis-1,3-Dichloropropene
 Concen: 0.765 ug/L
 RT: 7.22 min Scan# 1882
 Delta R.T. -0.04 min
 Lab File: VU028961.D
 Acq: 27 Dec 2018 11:56

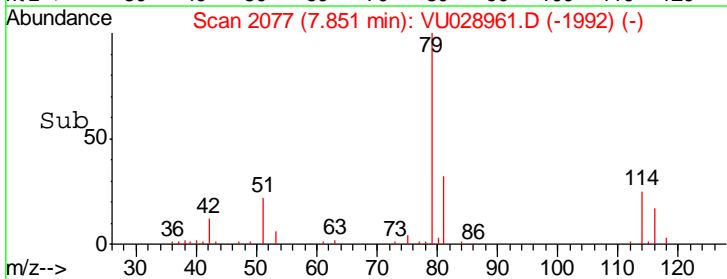
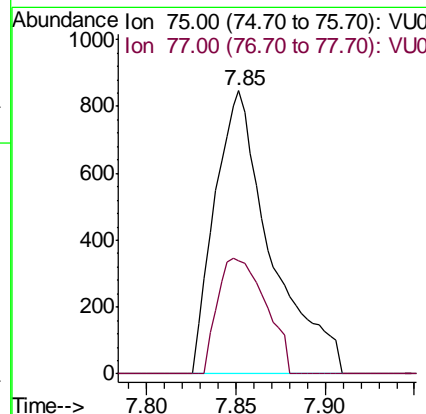
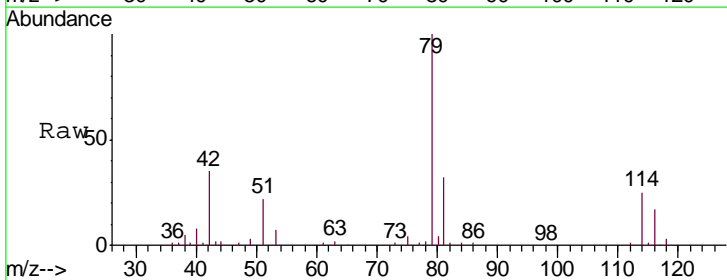
Instrument :
 MSVOA_U
 ClientSampled :
 BF000ME

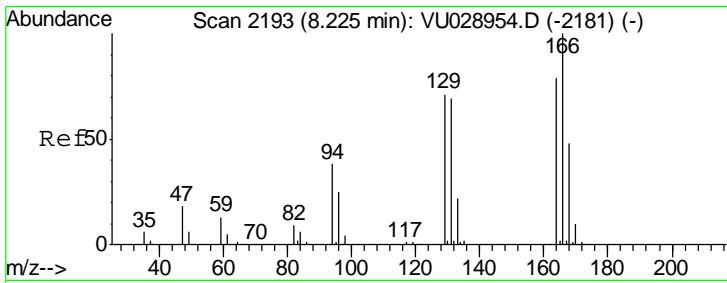
Tgt Ion: 75 Resp: 2239
 Ion Ratio Lower Upper
 75 100
 77 53.7 21.8 40.6#



#44
 trans-1,3-Dichloropropene
 Concen: 0.706 ug/L
 RT: 7.85 min Scan# 2077
 Delta R.T. -0.03 min
 Lab File: VU028961.D
 Acq: 27 Dec 2018 11:56

Tgt Ion: 75 Resp: 1841
 Ion Ratio Lower Upper
 75 100
 77 39.9 21.8 40.6

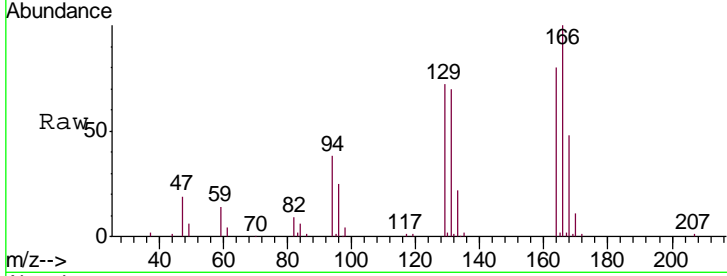




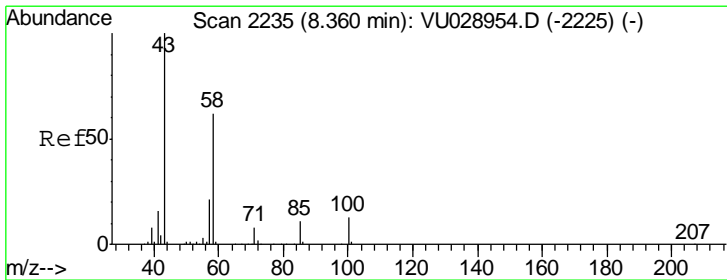
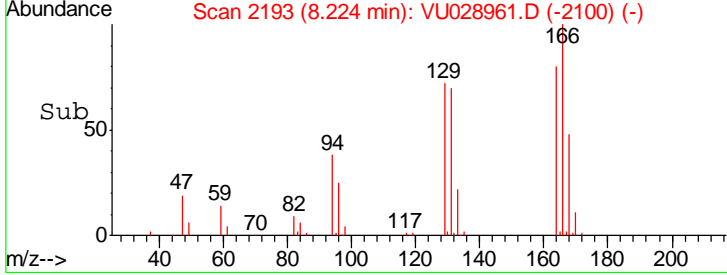
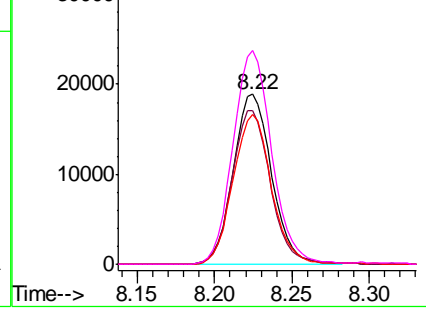
#46
 Tetrachloroethene
 Concen: 23.890 ug/L
 RT: 8.22 min Scan# 2193
 Delta R.T. -0.00 min
 Lab File: VU028961.D
 Acq: 27 Dec 2018 11:56

Instrument : MSVOA_U
 ClientSampled : BF000ME

Tgt Ion	Resp	Lower	Upper
164	100		
129	90.6	66.8	124.0
131	88.4	64.2	119.2
166	125.6	90.8	168.6

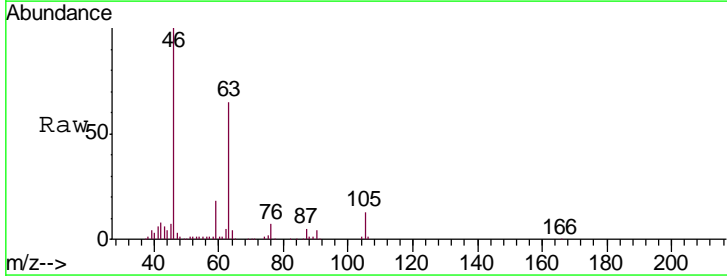


Abundance Ion 164.00 (163.70 to 164.70): V
 Ion 129.00 (128.70 to 129.70): V
 Ion 131.00 (130.70 to 131.70): V
 Ion 166.00 (165.70 to 166.70): V

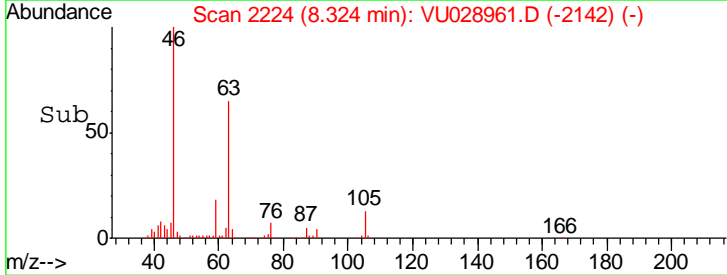
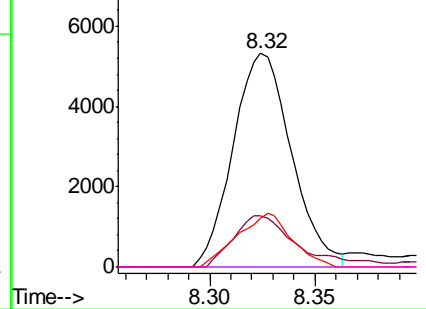


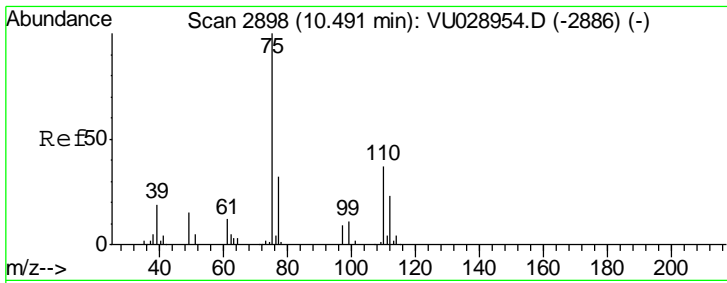
#48
 2-Hexanone
 Concen: 4.526 ug/L
 RT: 8.32 min Scan# 2224
 Delta R.T. -0.04 min
 Lab File: VU028961.D
 Acq: 27 Dec 2018 11:56

Tgt Ion	Resp	Lower	Upper
43	100		
58	23.3	45.9	68.9#
57	23.5	15.0	22.4#
100	0.0	8.7	13.1#



Abundance Ion 43.00 (42.70 to 43.70): VUC
 Ion 58.00 (57.70 to 58.70): VUC
 Ion 57.00 (56.70 to 57.70): VUC
 Ion 100.00 (99.70 to 100.70): VUC





#59
 1,2,3-Trichloropropane
 Concen: 5.150 ug/L
 RT: 11.48 min Scan# 3206
 Delta R.T. 0.99 min
 Lab File: VU028961.D
 Acq: 27 Dec 2018 11:56

Instrument :
 MSVOA_U
 ClientSampled :
 BF000ME

Tgt Ion: 75 Resp: 12609
 Ion Ratio Lower Upper
 75 100
 77 33.8 25.5 38.3

