

Data Path : Z:\voasrv\HPCHEM1\MSVOA_U\Data\VU122723\
 Data File : VU057294.D
 Acq On : 27 Dec 2023 21:52
 Operator : MD/SY
 Sample : 05976-08DL 4X
 Misc : 25.0mL/MSVOA_U/WATER
 ALS Vial : 18 Sample Multiplier: 1

Instrument :
 MSVOA_U
 ClientSampleId :

Quant Time: Dec 28 01:49:05 2023
 Quant Method : Z:\voasrv\HPCHEM1\MSVOA_U\Method\SFAMUTR122723WMA.M
 Quant Title : TRACE VOA SFAM1.0
 QLast Update : Thu Dec 28 00:43:53 2023
 Response via : Initial Calibration

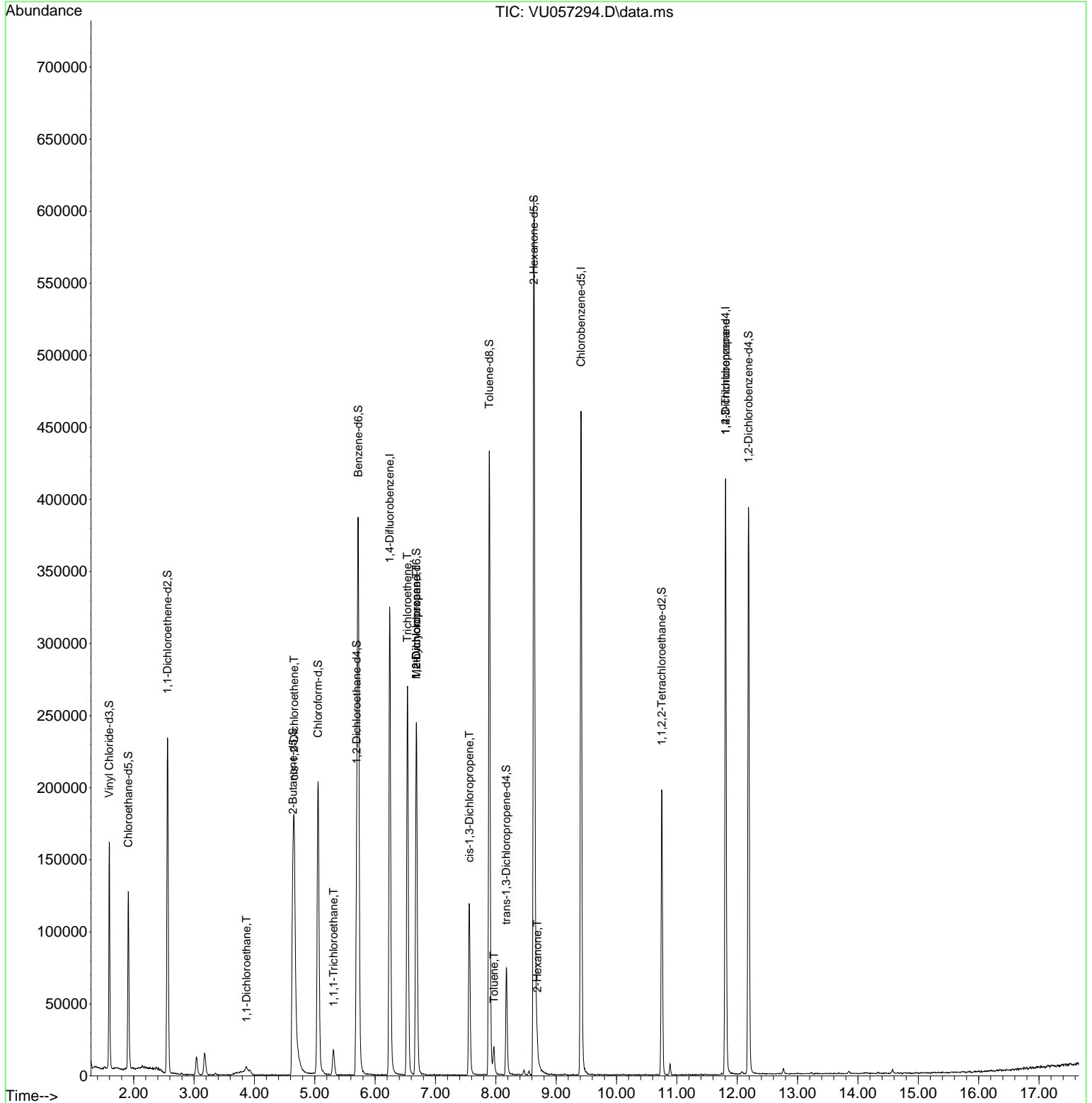
Compound	R.T.	QIon	Response	Conc	Units	Dev(Min)
Internal Standards						
1) 1,4-Difluorobenzene	6.242	114	261048	5.000	ug/L	0.00
28) Chlorobenzene-d5	9.412	117	258266	5.000	ug/L	0.00
58) 1,4-Dichlorobenzene-d4	11.807	152	105915	5.000	ug/L	0.00
System Monitoring Compounds						
4) Vinyl Chloride-d3	1.595	65	112499	5.013	ug/L	0.00
Spiked Amount	5.000	Range 40 - 130	Recovery	=	100.200%	
7) Chloroethane-d5	1.911	69	95158	5.279	ug/L	0.00
Spiked Amount	5.000	Range 65 - 130	Recovery	=	105.600%	
11) 1,1-Dichloroethene-d2	2.560	65	45572	5.102	ug/L	0.00
Spiked Amount	5.000	Range 60 - 125	Recovery	=	102.000%	
20) 2-Butanone-d5	4.637	46	278414	54.775	ug/L	0.00
Spiked Amount	50.000	Range 40 - 130	Recovery	=	109.560%	
24) Chloroform-d	5.055	84	195554	4.900	ug/L	0.00
Spiked Amount	5.000	Range 70 - 125	Recovery	=	98.000%	
26) 1,2-Dichloroethane-d4	5.695	65	107185	5.256	ug/L	0.00
Spiked Amount	5.000	Range 70 - 130	Recovery	=	105.200%	
32) Benzene-d6	5.721	84	369824	5.023	ug/L	0.00
Spiked Amount	5.000	Range 70 - 125	Recovery	=	100.400%	
36) 1,2-Dichloropropane-d6	6.685	67	121250	5.256	ug/L	0.00
Spiked Amount	5.000	Range 60 - 140	Recovery	=	105.200%	
41) Toluene-d8	7.891	98	296226	4.664	ug/L	0.00
Spiked Amount	5.000	Range 70 - 130	Recovery	=	93.200%	
43) trans-1,3-Dichloroprop...	8.174	79	45392	4.904	ug/L	0.00
Spiked Amount	5.000	Range 55 - 130	Recovery	=	98.000%	
46) 2-Hexanone-d5	8.630	63	215737	51.458	ug/L	0.00
Spiked Amount	50.000	Range 45 - 130	Recovery	=	102.920%	
56) 1,1,2,2-Tetrachloroeth...	10.749	84	100769	5.201	ug/L	0.00
Spiked Amount	5.000	Range 65 - 120	Recovery	=	104.000%	
66) 1,2-Dichlorobenzene-d4	12.187	152	102331	5.306	ug/L	0.00
Spiked Amount	5.000	Range 80 - 120	Recovery	=	106.200%	
Target Compounds						
19) 1,1-Dichloroethane	3.869	63	3470	0.098	ug/L	92
22) cis-1,2-Dichloroethene	4.660	96	46664	2.384	ug/L	97
29) 1,1,1-Trichloroethane	5.312	97	12737	0.389	ug/L	99
34) Trichloroethene	6.537	95	98530	4.970	ug/L	97
35) Methylcyclohexane	6.682	83	28645	1.106	ug/L #	17
37) 1,2-Dichloropropane	6.685	63	13581	0.656	ug/L #	90
39) cis-1,3-Dichloropropene	7.563	75	3483	0.123	ug/L	96
42) Toluene	7.968	91	13004	0.162	ug/L	97
48) 2-Hexanone	8.688	43	5946	0.765	ug/L #	35
61) 1,2,3-Trichloropropane	11.807	75	12879	1.165	ug/L #	70

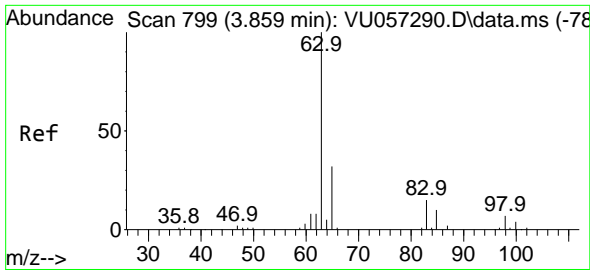
(#) = qualifier out of range (m) = manual integration (+) = signals summed

Data Path : Z:\voasrv\HPCHEM1\MSVOA_U\Data\VU122723\
 Data File : VU057294.D
 Acq On : 27 Dec 2023 21:52
 Operator : MD/SY
 Sample : 05976-08DL 4X
 Misc : 25.0mL/MSVOA_U/WATER
 ALS Vial : 18 Sample Multiplier: 1

Instrument :
 MSVOA_U
 ClientSampleId :

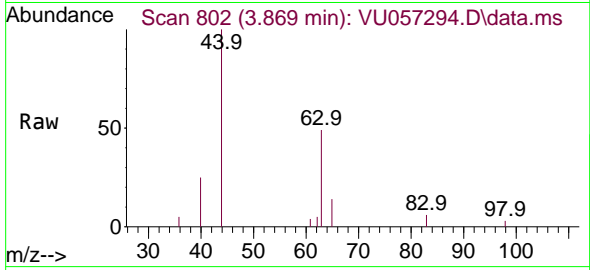
Quant Time: Dec 28 01:49:05 2023
 Quant Method : Z:\voasrv\HPCHEM1\MSVOA_U\Method\SFAMUTR122723WMA.M
 Quant Title : TRACE VOA SFAM1.0
 QLast Update : Thu Dec 28 00:43:53 2023
 Response via : Initial Calibration



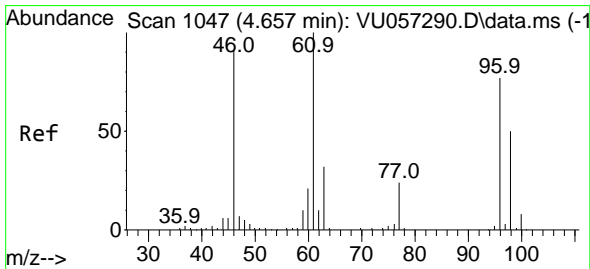
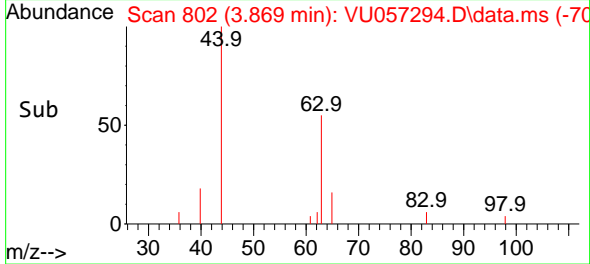
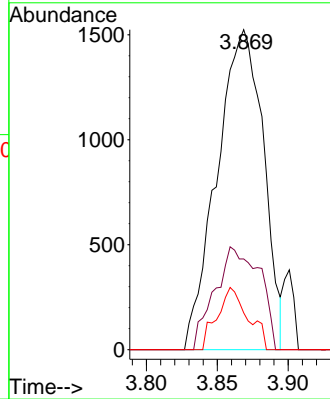


#19
 1,1-Dichloroethane
 Concen: 0.098 ug/L
 RT: 3.869 min Scan# 801
 Delta R.T. 0.009 min
 Lab File: VU057294.D
 Acq: 27 Dec 2023 21:52

Instrument :
 MSVOA_U
 ClientSampleId :

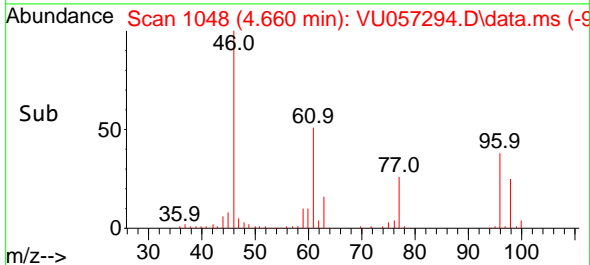
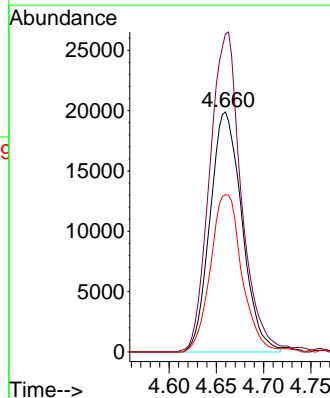
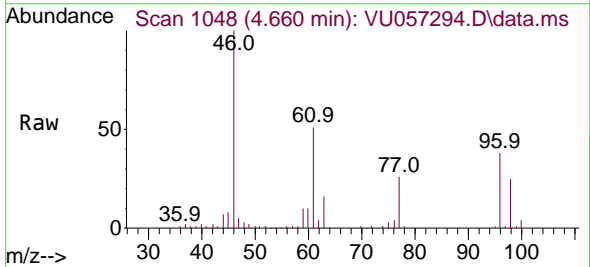


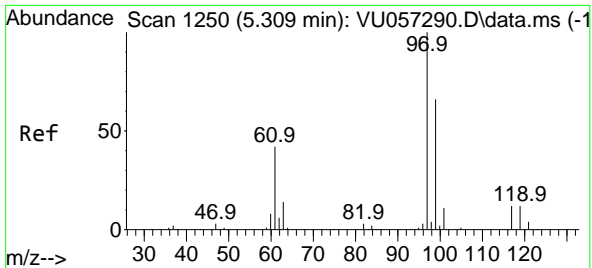
Tgt Ion: 63 Resp: 3470
 Ion Ratio Lower Upper
 63 100
 65 28.3 23.6 43.8
 83 11.5 9.8 18.2



#22
 cis-1,2-Dichloroethene
 Concen: 2.384 ug/L
 RT: 4.660 min Scan# 1048
 Delta R.T. 0.003 min
 Lab File: VU057294.D
 Acq: 27 Dec 2023 21:52

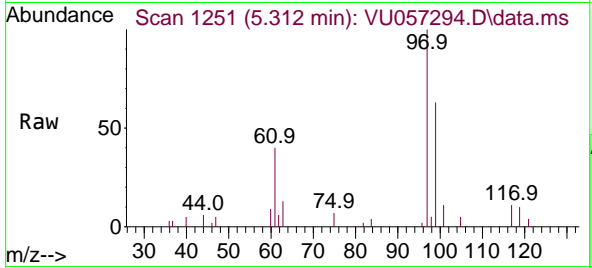
Tgt Ion: 96 Resp: 46664
 Ion Ratio Lower Upper
 96 100
 61 132.6 91.1 169.3
 98 65.5 42.6 79.0



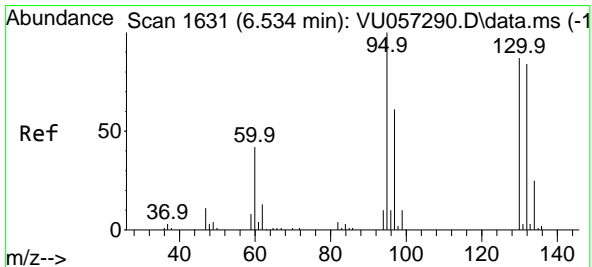
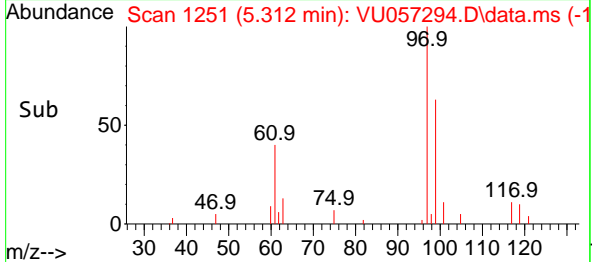
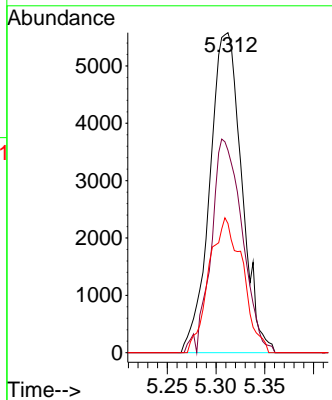


#29
 1,1,1-Trichloroethane
 Concen: 0.389 ug/L
 RT: 5.312 min Scan# 11
 Delta R.T. 0.003 min
 Lab File: VU057294.D
 Acq: 27 Dec 2023 21:52

Instrument :
 MSVOA_U
 ClientSampleId :

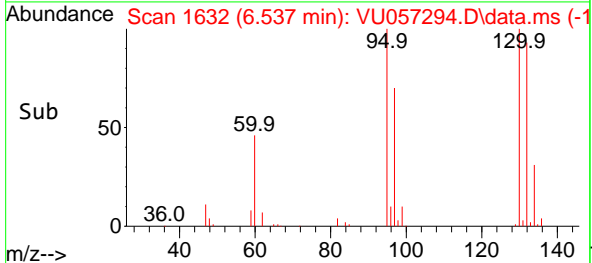
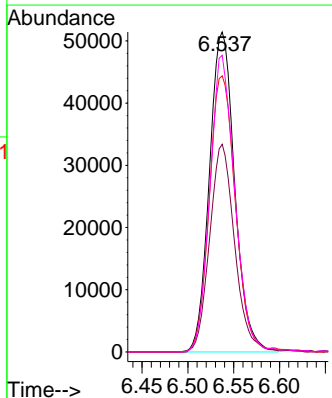
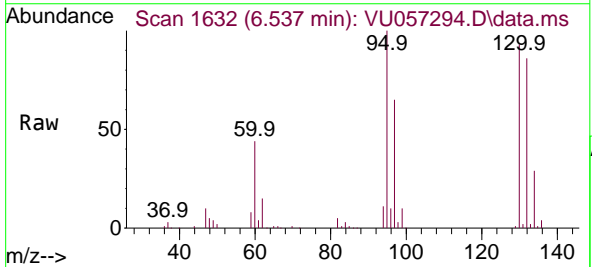


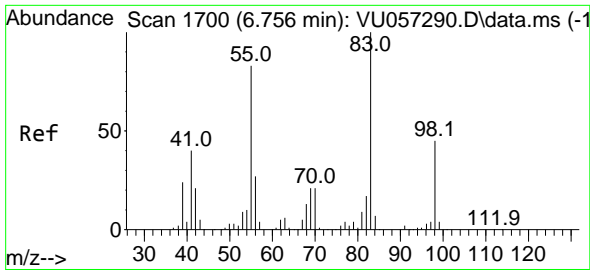
Tgt Ion: 97 Resp: 12737
 Ion Ratio Lower Upper
 97 100
 99 64.5 51.7 77.5
 61 44.3 34.1 51.1



#34
 Trichloroethene
 Concen: 4.970 ug/L
 RT: 6.537 min Scan# 1632
 Delta R.T. 0.003 min
 Lab File: VU057294.D
 Acq: 27 Dec 2023 21:52

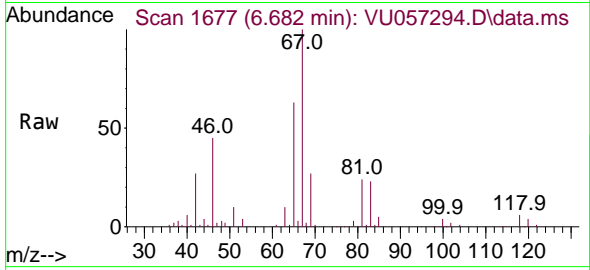
Tgt Ion: 95 Resp: 98530
 Ion Ratio Lower Upper
 95 100
 97 64.9 45.3 84.1
 132 86.3 63.1 117.3
 130 92.7 67.7 125.7



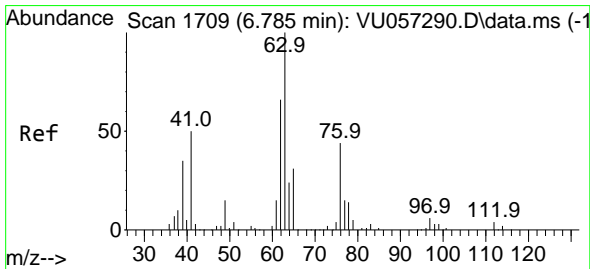
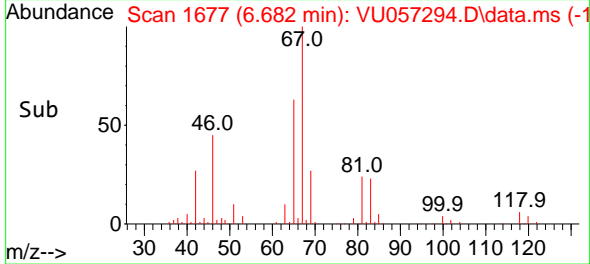
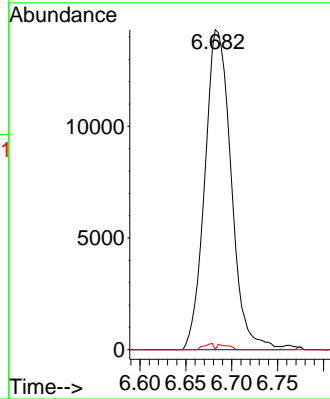


#35
 Methylcyclohexane
 Concen: 1.106 ug/L
 RT: 6.682 min Scan# 1677
 Delta R.T. -0.074 min
 Lab File: VU057294.D
 Acq: 27 Dec 2023 21:52

Instrument : MSVOA_U
 ClientSampleId :

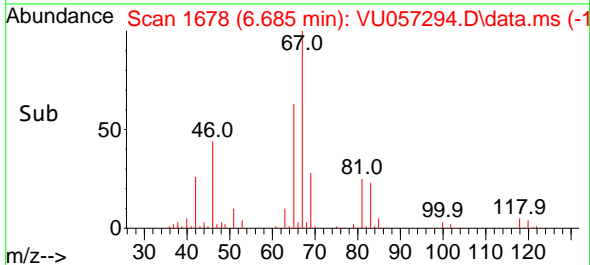
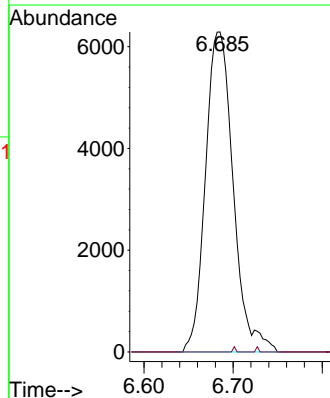
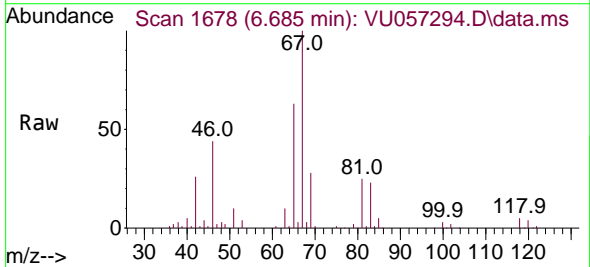


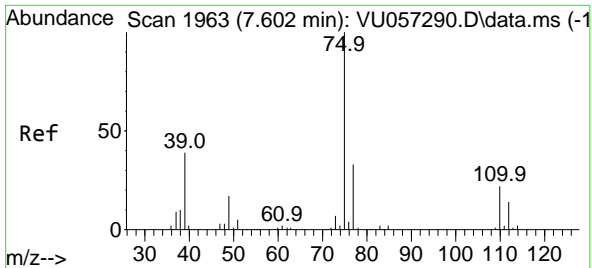
Tgt Ion: 83 Resp: 28645
 Ion Ratio Lower Upper
 83 100
 55 0.2 65.4 98.2#
 98 0.7 35.3 52.9#



#37
 1,2-Dichloropropane
 Concen: 0.656 ug/L
 RT: 6.685 min Scan# 1678
 Delta R.T. -0.100 min
 Lab File: VU057294.D
 Acq: 27 Dec 2023 21:52

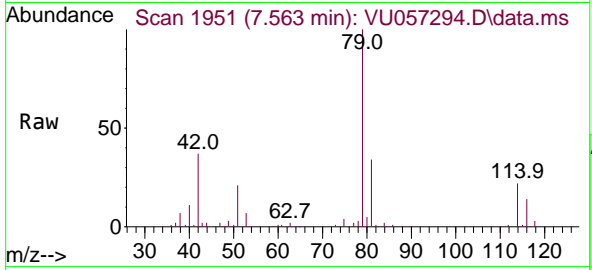
Tgt Ion: 63 Resp: 13581
 Ion Ratio Lower Upper
 63 100
 112 0.1 2.9 4.3#



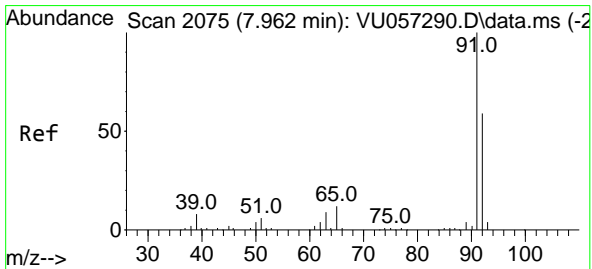
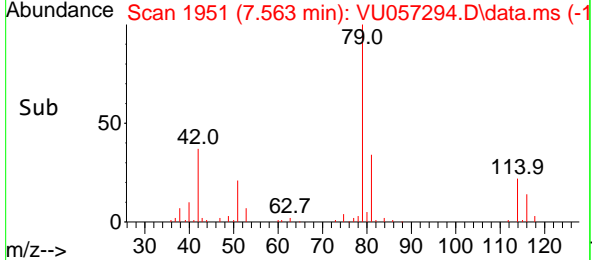
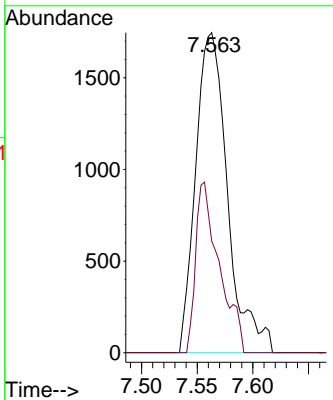


#39
 cis-1,3-Dichloropropene
 Concen: 0.123 ug/L
 RT: 7.563 min Scan# 1963
 Delta R.T. -0.039 min
 Lab File: VU057294.D
 Acq: 27 Dec 2023 21:52

Instrument : MSVOA_U
 ClientSampleId :

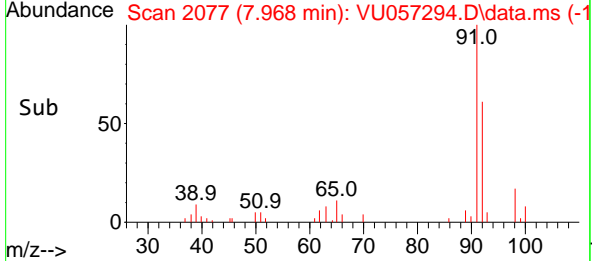
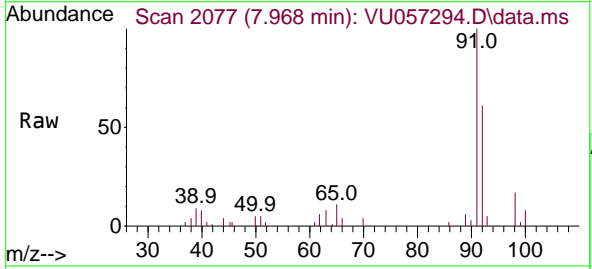
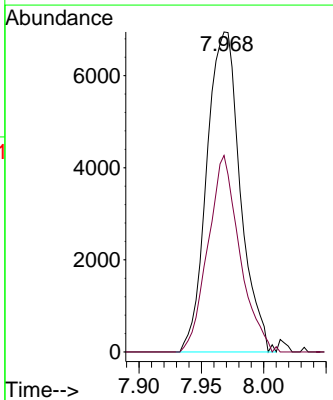


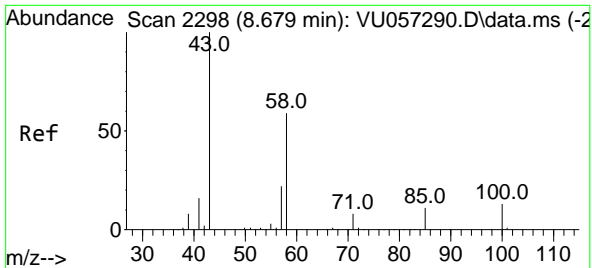
Tgt Ion: 75 Resp: 3483
 Ion Ratio Lower Upper
 75 100
 77 34.9 23.0 42.8



#42
 Toluene
 Concen: 0.162 ug/L
 RT: 7.968 min Scan# 2077
 Delta R.T. 0.006 min
 Lab File: VU057294.D
 Acq: 27 Dec 2023 21:52

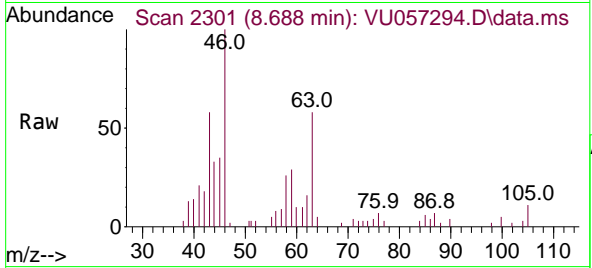
Tgt Ion: 91 Resp: 13004
 Ion Ratio Lower Upper
 91 100
 92 61.4 41.6 77.2





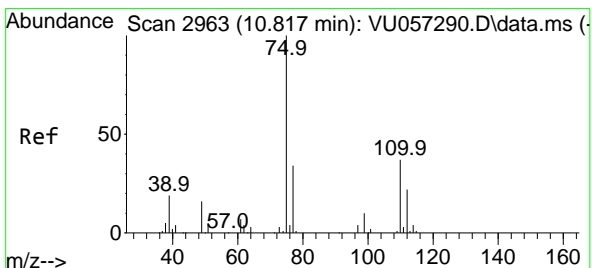
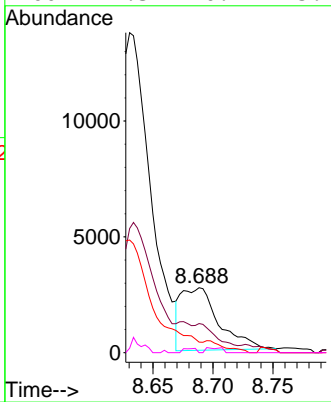
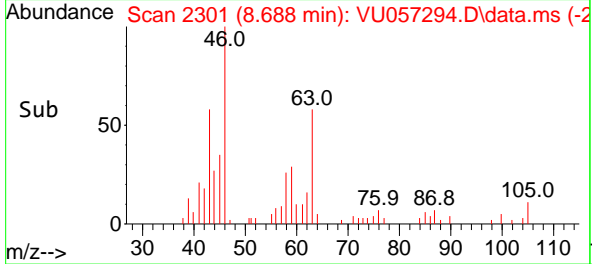
#48
 2-Hexanone
 Concen: 0.765 ug/L
 RT: 8.688 min Scan# 21
 Delta R.T. 0.009 min
 Lab File: VU057294.D
 Acq: 27 Dec 2023 21:52

Instrument :
 MSVOA_U
 ClientSampleId :

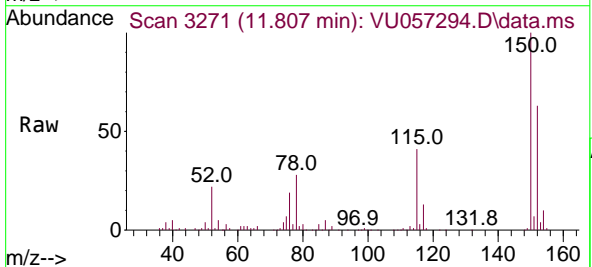


Tgt Ion: 43 Resp: 5946

Ion	Ratio	Lower	Upper
43	100		
58	0.0	48.4	72.6#
57	0.0	17.4	26.2#
100	2.3	10.1	15.1#



#61
 1,2,3-Trichloropropane
 Concen: 1.165 ug/L
 RT: 11.807 min Scan# 3271
 Delta R.T. 0.990 min
 Lab File: VU057294.D
 Acq: 27 Dec 2023 21:52



Tgt Ion: 75 Resp: 12879

Ion	Ratio	Lower	Upper
75	100		
110	4.1	29.0	43.6#
77	33.4	25.4	38.2

