

Data Path : Z:\voasrv\HPCHEM1\MSVOA\_U\Data\VU122723\  
 Data File : VU057300.D  
 Acq On : 28 Dec 2023 00:18  
 Operator : MD/SY  
 Sample : 06021-13  
 Misc : 25.0mL/MSVOA\_U/WATER  
 ALS Vial : 24 Sample Multiplier: 1

Instrument :  
 MSVOA\_U  
 ClientSampleId :

Quant Time: Dec 28 01:50:28 2023  
 Quant Method : Z:\voasrv\HPCHEM1\MSVOA\_U\Method\SFAMUTR122723WMA.M  
 Quant Title : TRACE VOA SFAM1.0  
 QLast Update : Thu Dec 28 00:43:53 2023  
 Response via : Initial Calibration

Compound	R.T.	QIon	Response	Conc	Units	Dev(Min)
Internal Standards						
1) 1,4-Difluorobenzene	6.242	114	246878	5.000	ug/L	0.00
28) Chlorobenzene-d5	9.412	117	252433	5.000	ug/L	0.00
58) 1,4-Dichlorobenzene-d4	11.807	152	101934	5.000	ug/L	0.00
System Monitoring Compounds						
4) Vinyl Chloride-d3	1.595	65	109075	5.139	ug/L	0.00
Spiked Amount	5.000	Range 40 - 130	Recovery	=	102.800%	
7) Chloroethane-d5	1.911	69	90664	5.319	ug/L	0.00
Spiked Amount	5.000	Range 65 - 130	Recovery	=	106.400%	
11) 1,1-Dichloroethene-d2	2.560	65	45915	5.435	ug/L	0.00
Spiked Amount	5.000	Range 60 - 125	Recovery	=	108.800%	
20) 2-Butanone-d5	4.640	46	237056	49.315	ug/L	0.00
Spiked Amount	50.000	Range 40 - 130	Recovery	=	98.640%	
24) Chloroform-d	5.055	84	189367	5.017	ug/L	0.00
Spiked Amount	5.000	Range 70 - 125	Recovery	=	100.400%	
26) 1,2-Dichloroethane-d4	5.695	65	99695	5.169	ug/L	0.00
Spiked Amount	5.000	Range 70 - 130	Recovery	=	103.400%	
32) Benzene-d6	5.721	84	357543	4.969	ug/L	0.00
Spiked Amount	5.000	Range 70 - 125	Recovery	=	99.400%	
36) 1,2-Dichloropropane-d6	6.685	67	117046	5.191	ug/L	0.00
Spiked Amount	5.000	Range 60 - 140	Recovery	=	103.800%	
41) Toluene-d8	7.894	98	282207	4.546	ug/L	0.00
Spiked Amount	5.000	Range 70 - 130	Recovery	=	91.000%	
43) trans-1,3-Dichloroprop...	8.177	79	43478	4.806	ug/L	0.00
Spiked Amount	5.000	Range 55 - 130	Recovery	=	96.200%	
46) 2-Hexanone-d5	8.631	63	209227	51.059	ug/L	0.00
Spiked Amount	50.000	Range 45 - 130	Recovery	=	102.120%	
56) 1,1,2,2-Tetrachloroeth...	10.749	84	93966	4.962	ug/L	0.00
Spiked Amount	5.000	Range 65 - 120	Recovery	=	99.200%	
66) 1,2-Dichlorobenzene-d4	12.190	152	99868	5.380	ug/L	0.00
Spiked Amount	5.000	Range 80 - 120	Recovery	=	107.600%	
Target Compounds						
5) Vinyl chloride	1.599	62	235209	11.414	ug/L	99
12) 1,1-Dichloroethene	2.573	96	1921	0.119	ug/L #	1
13) Acetone	2.663	43	29688	9.476	ug/L	80
14) Carbon disulfide	2.792	76	6600	0.143	ug/L	96
18) trans-1,2-Dichloroethene	3.348	96	6461	0.403	ug/L	88
19) 1,1-Dichloroethane	3.859	63	191735	5.698	ug/L	97
22) cis-1,2-Dichloroethene	4.660	96	68082	3.679	ug/L	97
29) 1,1,1-Trichloroethane	5.306	97	37325	1.167	ug/L	97
31) Carbon tetrachloride	5.309	117	4812	0.179	ug/L	93
34) Trichloroethene	6.534	95	86486	4.463	ug/L	97
35) Methylcyclohexane	6.682	83	28694	1.134	ug/L #	17
37) 1,2-Dichloropropane	6.682	63	12808	0.633	ug/L #	91
39) cis-1,3-Dichloropropene	7.560	75	3245	0.117	ug/L #	78
42) Toluene	7.965	91	128270	1.638	ug/L	97
48) 2-Hexanone	8.627	43	42867	5.640	ug/L #	65
61) 1,2,3-Trichloropropane	11.807	75	13524	1.271	ug/L #	68

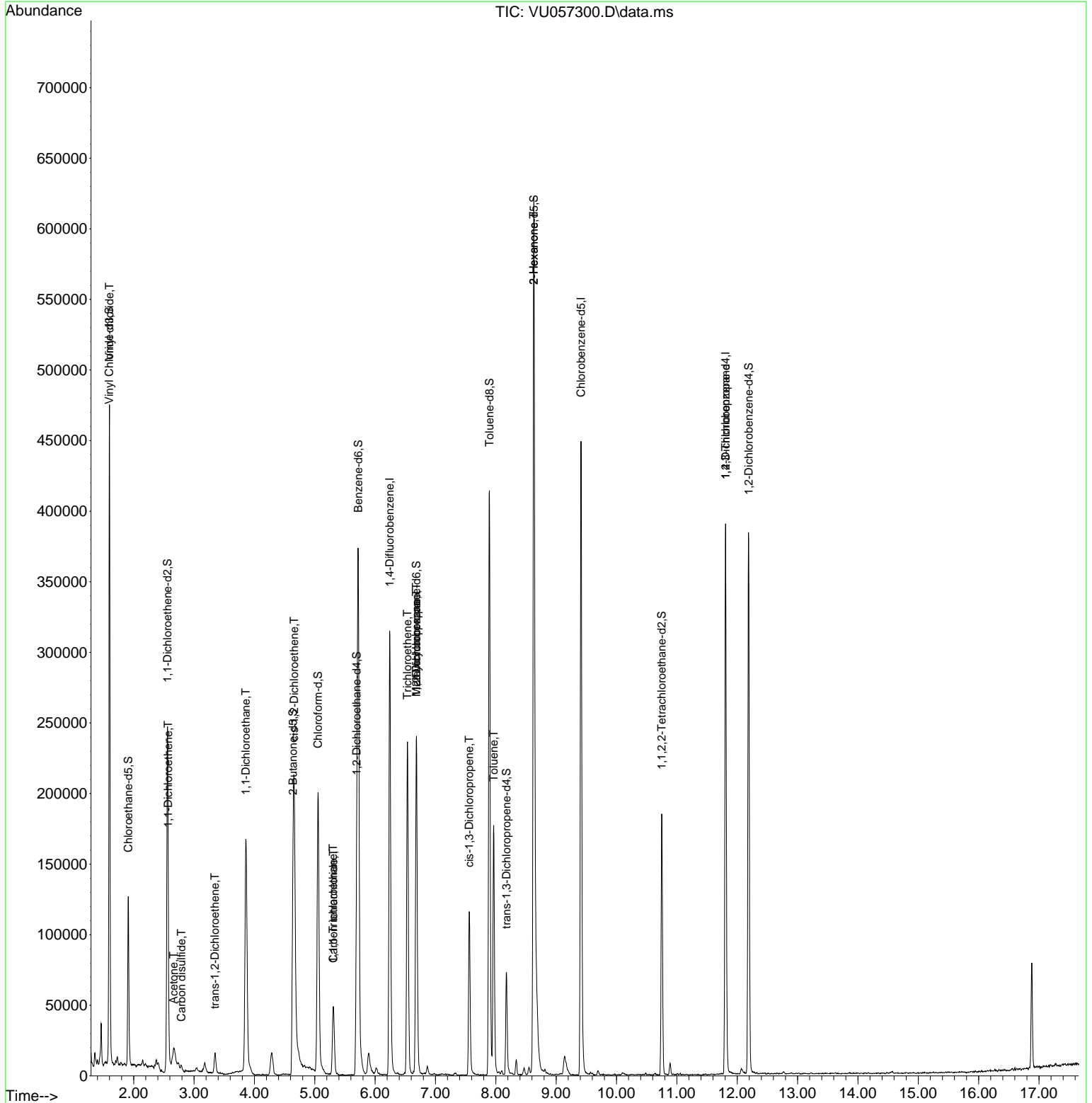
(#) = qualifier out of range (m) = manual integration (+) = signals summed

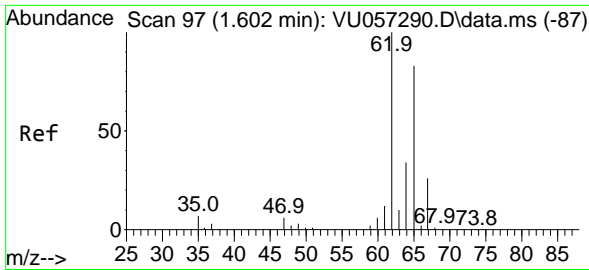
**Instrument :**  
MSVOA\_U  
**ClientSampleId :**

Data Path : Z:\voasrv\HPCHEM1\MSVOA\_U\Data\VU122723\  
 Data File : VU057300.D  
 Acq On : 28 Dec 2023 00:18  
 Operator : MD/SY  
 Sample : 06021-13  
 Misc : 25.0mL/MSVOA\_U/WATER  
 ALS Vial : 24 Sample Multiplier: 1

Instrument :  
 MSVOA\_U  
 ClientSampleId :

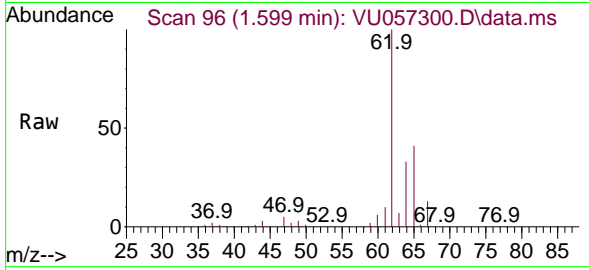
Quant Time: Dec 28 01:50:28 2023  
 Quant Method : Z:\voasrv\HPCHEM1\MSVOA\_U\Method\SFAMUTR122723WMA.M  
 Quant Title : TRACE VOA SFAM1.0  
 QLast Update : Thu Dec 28 00:43:53 2023  
 Response via : Initial Calibration



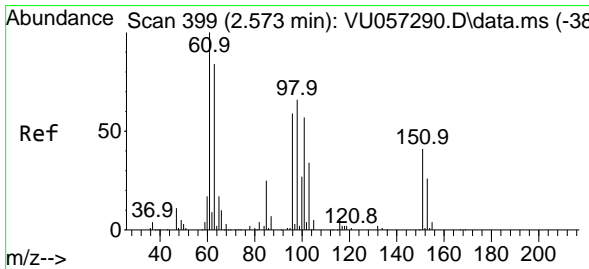
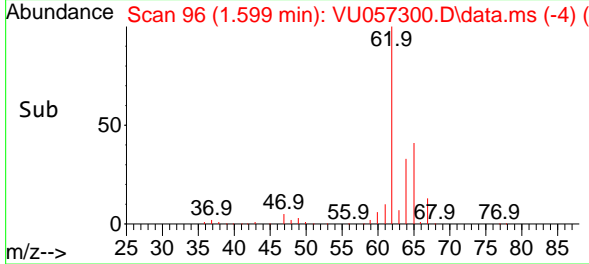
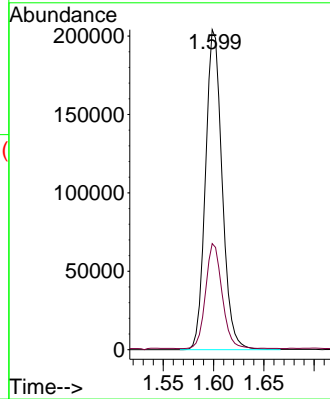


#5  
 Vinyl chloride  
 Concen: 11.414 ug/L  
 RT: 1.599 min Scan# 90  
 Delta R.T. -0.003 min  
 Lab File: VU057300.D  
 Acq: 28 Dec 2023 00:18

Instrument :  
 MSVOA\_U  
 ClientSampleId :

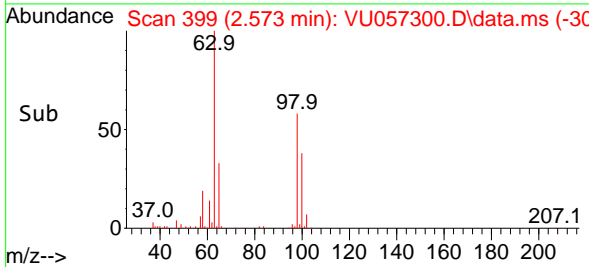
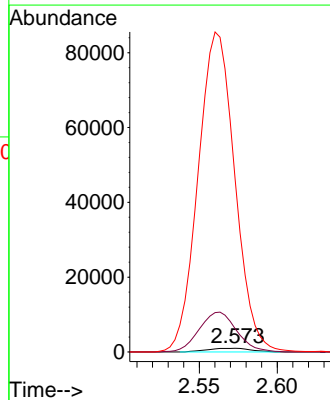
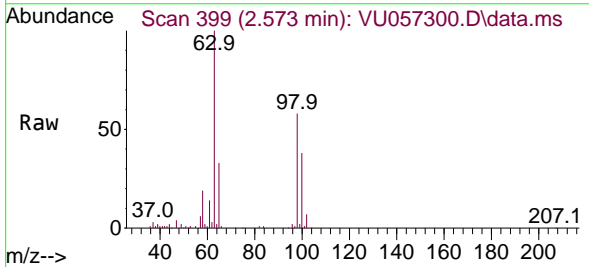


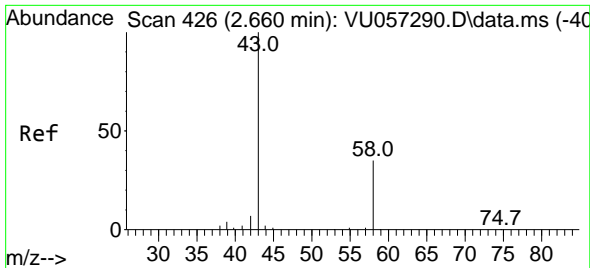
Tgt Ion: 62 Resp: 235209  
 Ion Ratio Lower Upper  
 62 100  
 64 33.2 22.8 42.4



#12  
 1,1-Dichloroethene  
 Concen: 0.119 ug/L  
 RT: 2.573 min Scan# 399  
 Delta R.T. -0.000 min  
 Lab File: VU057300.D  
 Acq: 28 Dec 2023 00:18

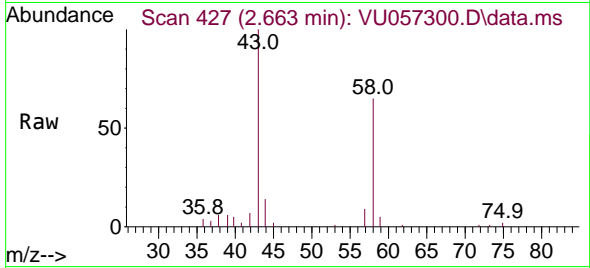
Tgt Ion: 96 Resp: 1921  
 Ion Ratio Lower Upper  
 96 100  
 61 636.1 122.2 226.9#  
 63 4711.3 99.2 184.2#



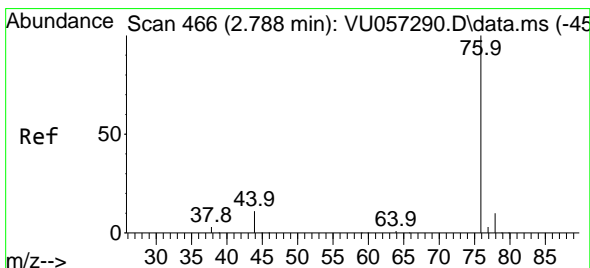
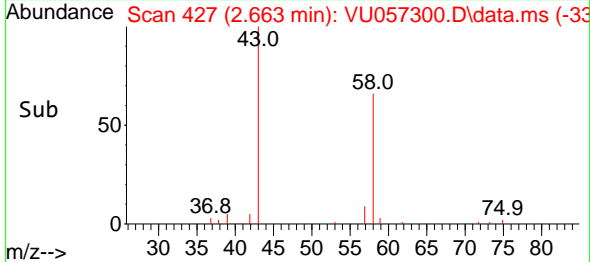
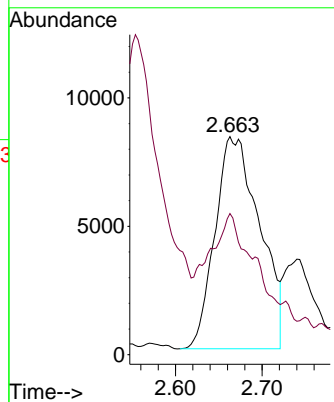


#13  
 Acetone  
 Concen: 9.476 ug/L  
 RT: 2.663 min Scan# 41  
 Delta R.T. 0.003 min  
 Lab File: VU057300.D  
 Acq: 28 Dec 2023 00:18

Instrument :  
 MSVOA\_U  
 ClientSampled :

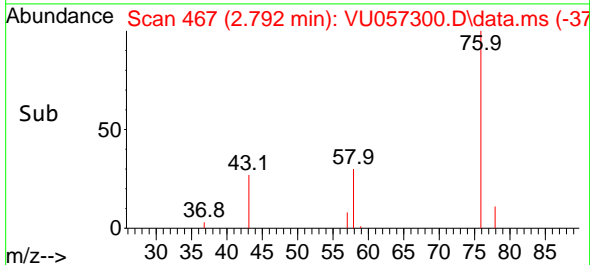
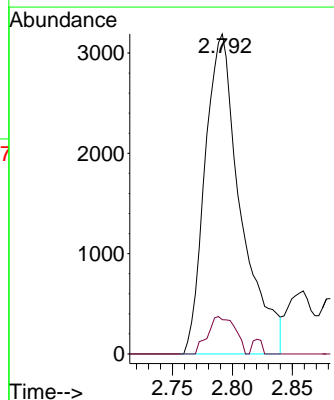
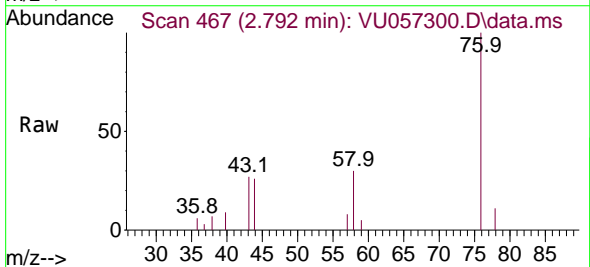


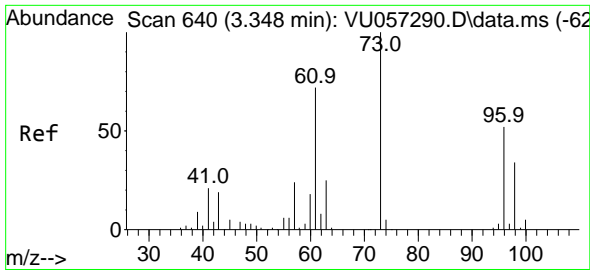
Tgt Ion: 43 Resp: 29688  
 Ion Ratio Lower Upper  
 43 100  
 58 45.2 0.0 67.2



#14  
 Carbon disulfide  
 Concen: 0.143 ug/L  
 RT: 2.792 min Scan# 467  
 Delta R.T. 0.003 min  
 Lab File: VU057300.D  
 Acq: 28 Dec 2023 00:18

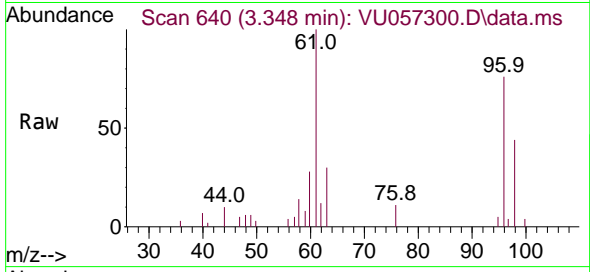
Tgt Ion: 76 Resp: 6600  
 Ion Ratio Lower Upper  
 76 100  
 78 10.7 7.3 10.9



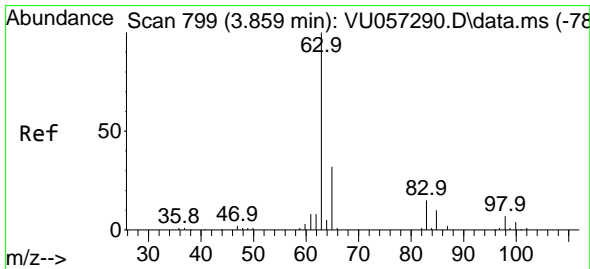
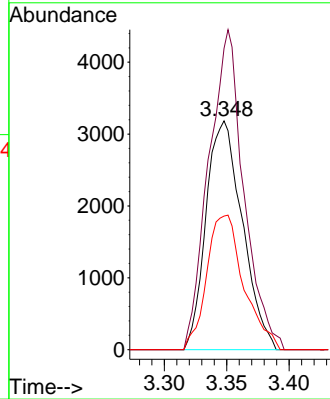
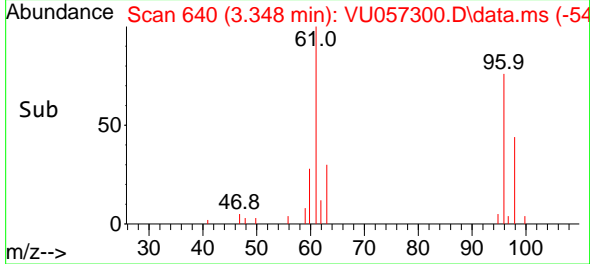


#18  
 trans-1,2-Dichloroethene  
 Concen: 0.403 ug/L  
 RT: 3.348 min Scan# 640  
 Delta R.T. -0.000 min  
 Lab File: VU057300.D  
 Acq: 28 Dec 2023 00:18

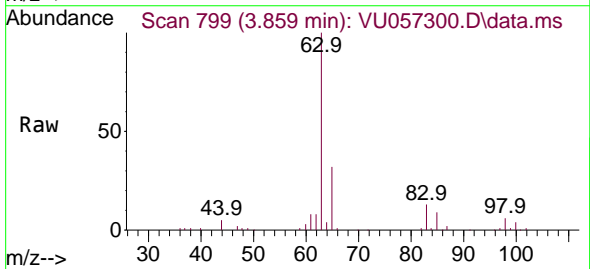
Instrument :  
 MSVOA\_U  
 ClientSampleId :



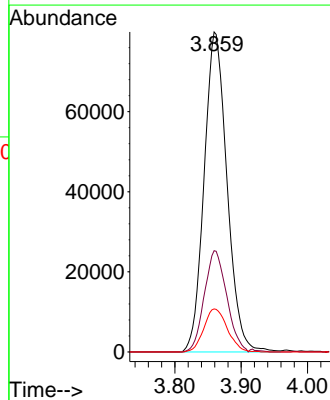
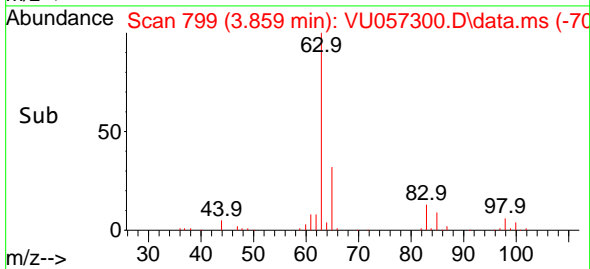
Tgt Ion: 96 Resp: 6461  
 Ion Ratio Lower Upper  
 96 100  
 61 125.0 97.5 181.1  
 98 55.5 45.9 85.3

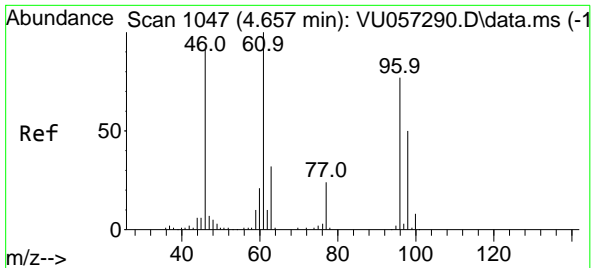


#19  
 1,1-Dichloroethane  
 Concen: 5.698 ug/L  
 RT: 3.859 min Scan# 799  
 Delta R.T. -0.000 min  
 Lab File: VU057300.D  
 Acq: 28 Dec 2023 00:18



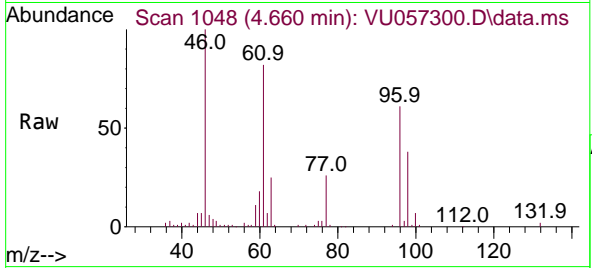
Tgt Ion: 63 Resp: 191735  
 Ion Ratio Lower Upper  
 63 100  
 65 31.7 23.6 43.8  
 83 13.5 9.8 18.2





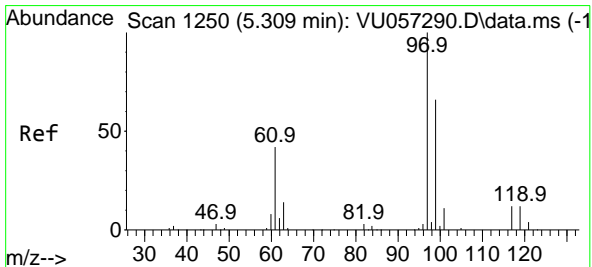
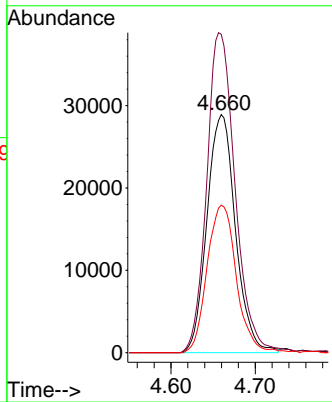
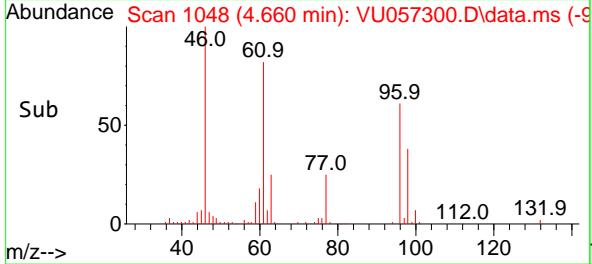
#22  
 cis-1,2-Dichloroethene  
 Concen: 3.679 ug/L  
 RT: 4.660 min Scan# 1048  
 Delta R.T. 0.003 min  
 Lab File: VU057300.D  
 Acq: 28 Dec 2023 00:18

Instrument : MSVOA\_U  
 ClientSampleId :

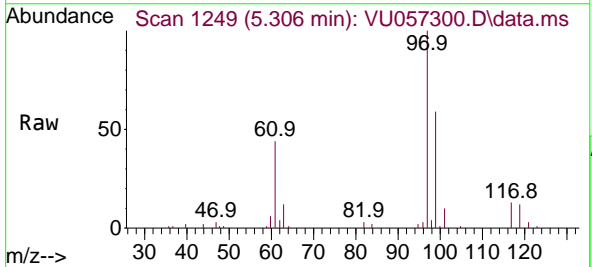


Tgt Ion: 96 Resp: 68082

Ion	Ratio	Lower	Upper
96	100		
61	133.8	91.1	169.3
98	62.0	42.6	79.0

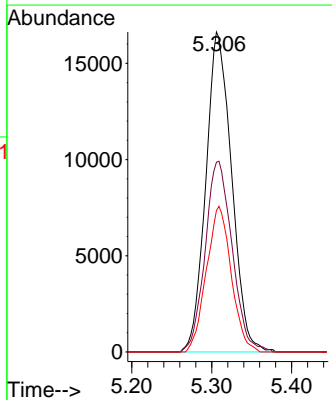
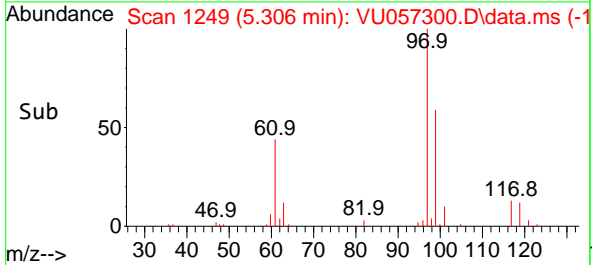


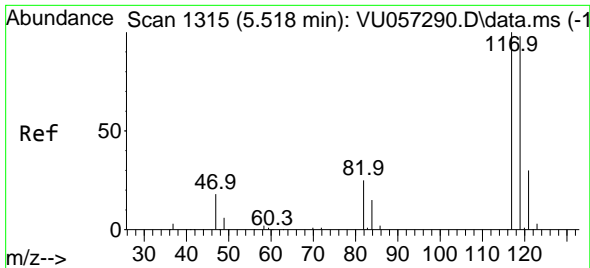
#29  
 1,1,1-Trichloroethane  
 Concen: 1.167 ug/L  
 RT: 5.306 min Scan# 1249  
 Delta R.T. -0.003 min  
 Lab File: VU057300.D  
 Acq: 28 Dec 2023 00:18



Tgt Ion: 97 Resp: 37325

Ion	Ratio	Lower	Upper
97	100		
99	62.3	51.7	77.5
61	43.8	34.1	51.1

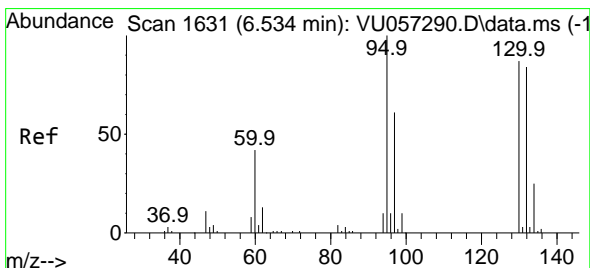
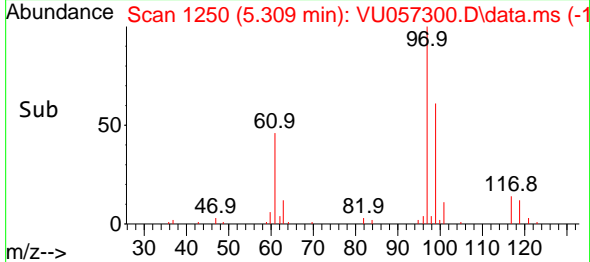
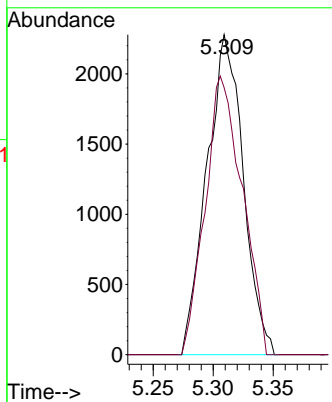
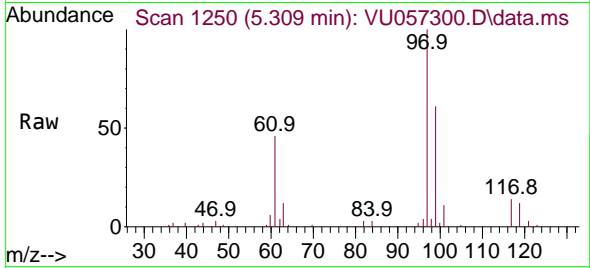




#31  
 Carbon tetrachloride  
 Concen: 0.179 ug/L  
 RT: 5.309 min Scan# 117  
 Delta R.T. -0.209 min  
 Lab File: VU057300.D  
 Acq: 28 Dec 2023 00:18

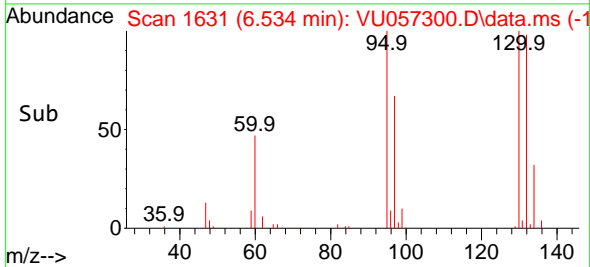
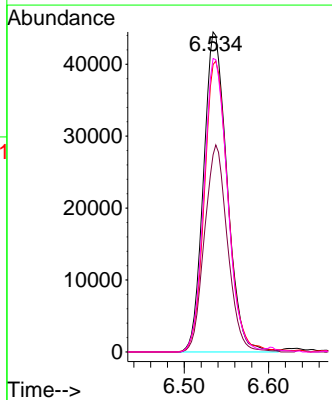
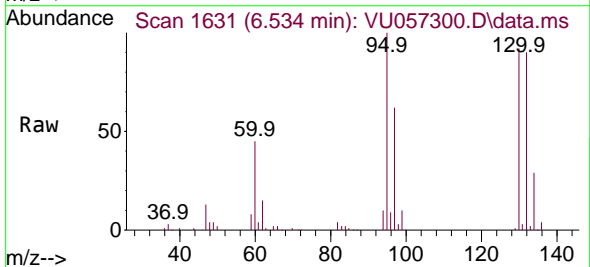
Instrument : MSVOA\_U  
 ClientSampleId :

Tgt Ion:117 Resp: 4812  
 Ion Ratio Lower Upper  
 117 100  
 119 89.0 76.7 115.1

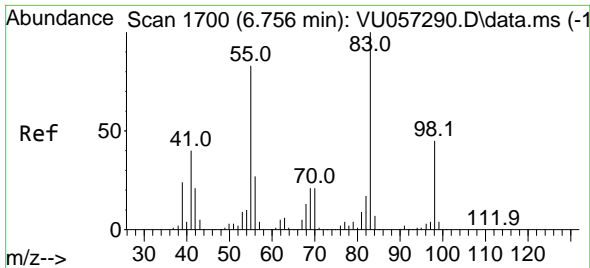


#34  
 Trichloroethene  
 Concen: 4.463 ug/L  
 RT: 6.534 min Scan# 1631  
 Delta R.T. -0.000 min  
 Lab File: VU057300.D  
 Acq: 28 Dec 2023 00:18

Tgt Ion: 95 Resp: 86486  
 Ion Ratio Lower Upper  
 95 100  
 97 61.6 45.3 84.1  
 132 89.8 63.1 117.3  
 130 91.7 67.7 125.7

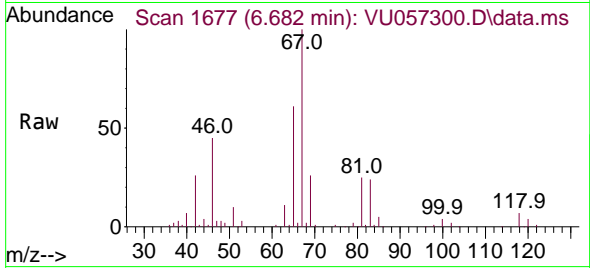




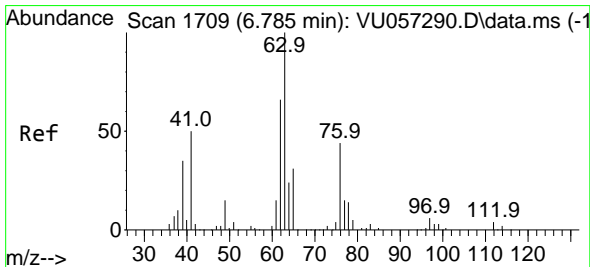
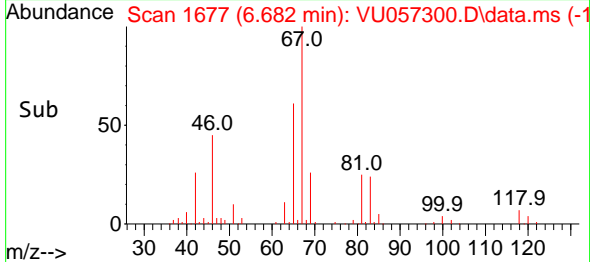
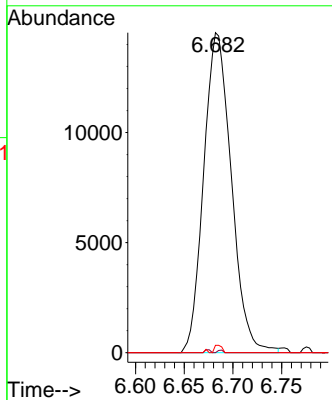


#35  
 Methylcyclohexane  
 Concen: 1.134 ug/L  
 RT: 6.682 min Scan# 1677  
 Delta R.T. -0.074 min  
 Lab File: VU057300.D  
 Acq: 28 Dec 2023 00:18

Instrument : MSVOA\_U  
 ClientSampleId :

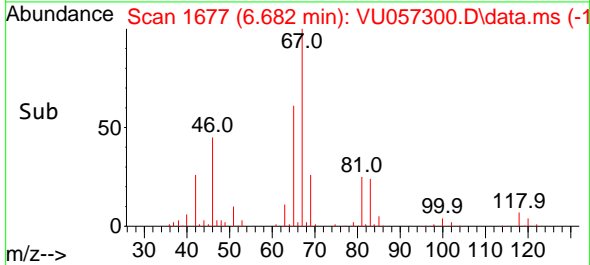
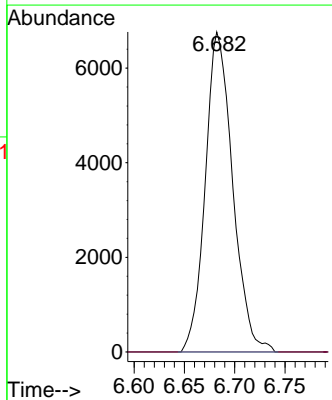
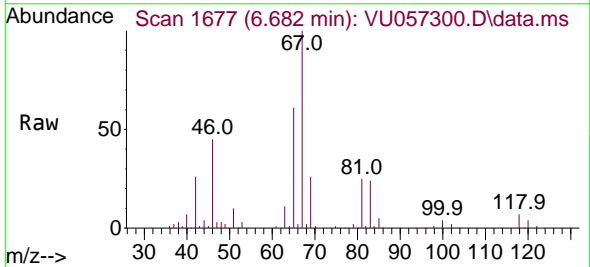


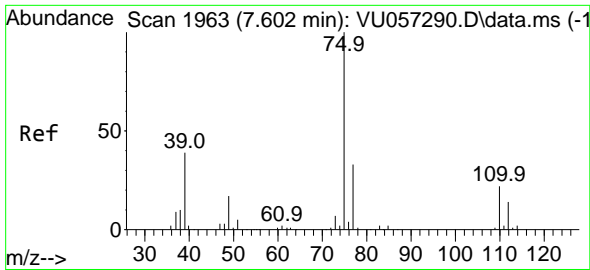
Tgt Ion: 83 Resp: 28694  
 Ion Ratio Lower Upper  
 83 100  
 55 0.1 65.4 98.2#  
 98 0.6 35.3 52.9#



#37  
 1,2-Dichloropropane  
 Concen: 0.633 ug/L  
 RT: 6.682 min Scan# 1677  
 Delta R.T. -0.103 min  
 Lab File: VU057300.D  
 Acq: 28 Dec 2023 00:18

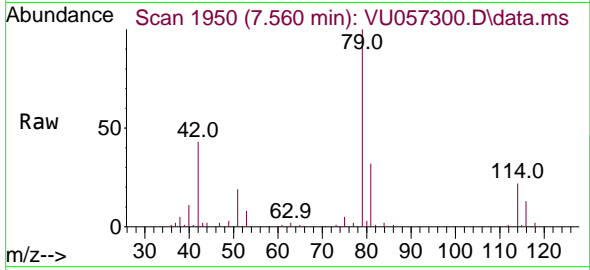
Tgt Ion: 63 Resp: 12808  
 Ion Ratio Lower Upper  
 63 100  
 112 0.7 2.9 4.3#



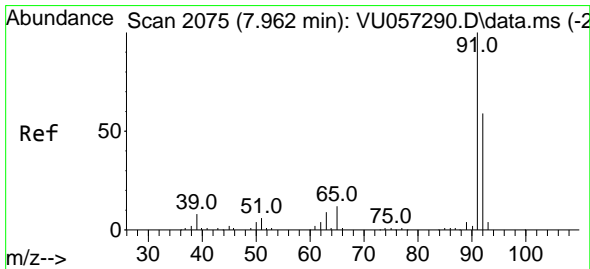
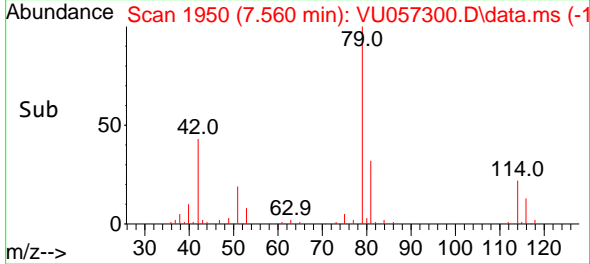
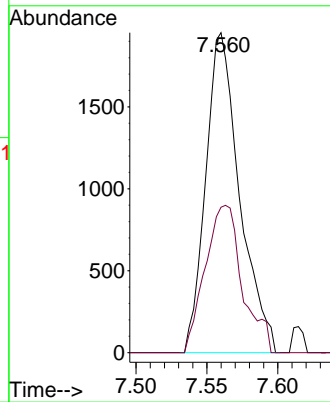


#39  
 cis-1,3-Dichloropropene  
 Concen: 0.117 ug/L  
 RT: 7.560 min Scan# 1963  
 Delta R.T. -0.042 min  
 Lab File: VU057300.D  
 Acq: 28 Dec 2023 00:18

Instrument :  
 MSVOA\_U  
 ClientSampleId :

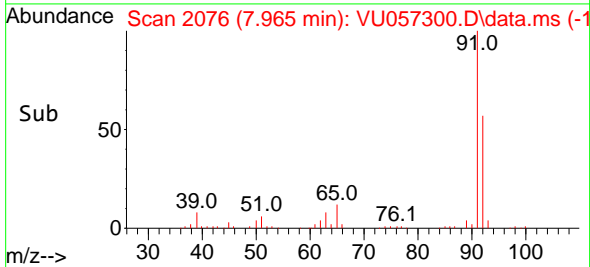
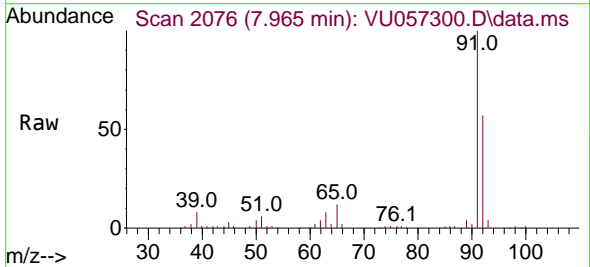
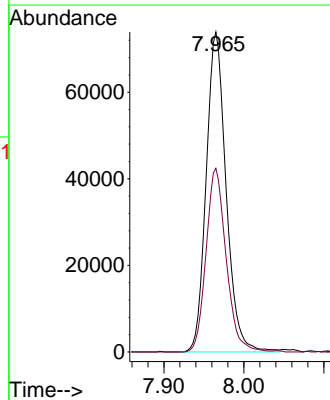


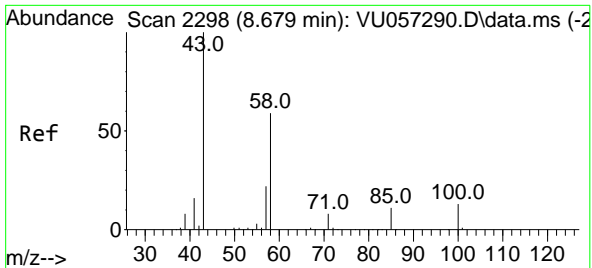
Tgt Ion: 75 Resp: 3245  
 Ion Ratio Lower Upper  
 75 100  
 77 45.4 23.0 42.8#



#42  
 Toluene  
 Concen: 1.638 ug/L  
 RT: 7.965 min Scan# 2076  
 Delta R.T. 0.003 min  
 Lab File: VU057300.D  
 Acq: 28 Dec 2023 00:18

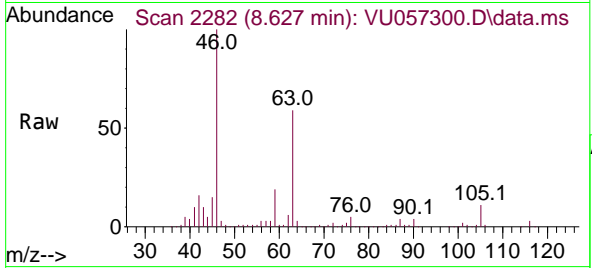
Tgt Ion: 91 Resp: 128270  
 Ion Ratio Lower Upper  
 91 100  
 92 57.4 41.6 77.2





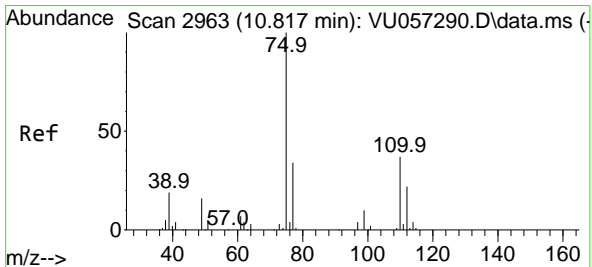
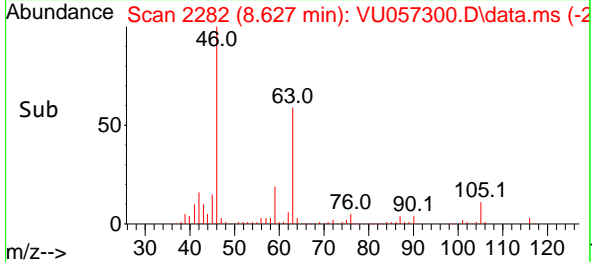
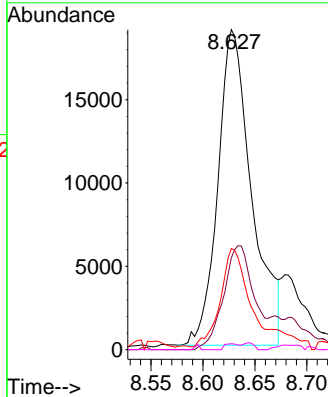
#48  
 2-Hexanone  
 Concen: 5.640 ug/L  
 RT: 8.627 min Scan# 21  
 Delta R.T. -0.052 min  
 Lab File: VU057300.D  
 Acq: 28 Dec 2023 00:18

Instrument :  
 MSVOA\_U  
 ClientSampleId :



Tgt Ion: 43 Resp: 42867

Ion	Ratio	Lower	Upper
43	100		
58	29.8	48.4	72.6#
57	32.1	17.4	26.2#
100	0.9	10.1	15.1#



#61  
 1,2,3-Trichloropropane  
 Concen: 1.271 ug/L  
 RT: 11.807 min Scan# 3271  
 Delta R.T. 0.990 min  
 Lab File: VU057300.D  
 Acq: 28 Dec 2023 00:18

Tgt Ion: 75 Resp: 13524

Ion	Ratio	Lower	Upper
75	100		
110	1.3	29.0	43.6#
77	32.0	25.4	38.2

