

Data Path : Z:\voasrv\HPCHEM1\MSVOA_U\Data\VU122723\
 Data File : VU057299.D
 Acq On : 27 Dec 2023 23:53
 Operator : MD/SY
 Sample : 06021-12
 Misc : 25.0mL/MSVOA_U/WATER
 ALS Vial : 23 Sample Multiplier: 1

Instrument :
 MSVOA_U
 ClientSampleId :
 BH7Z4

Integration Parameters: rteint.p

Integrator: RTE

Smoothing : ON

Filtering: 5

Sampling : 1

Min Area: 3 % of largest Peak

Start Thrs: 0.1

Max Peaks: 100

Stop Thrs : 0

Peak Location: TOP

If leading or trailing edge < 100 prefer < Baseline drop else tangent >

Peak separation: 5

Method : Z:\voasrv\HPCHEM1\MSVOA_U\Method\SFAMUTR122723WMA.M

Title : TRACE VOA SFAM1.0

Signal : TIC: VU057299.D\data.ms

peak #	R.T. min	first scan	max scan	last scan	PK TY	peak height	corr. area	corr. % max.	% of total
1	1.461	43	53	66	rVB	42462	58085	1.76%	0.377%
2	1.599	85	96	113	rVB2	675102	817393	24.72%	5.305%
3	1.908	184	192	207	rVB	116701	159370	4.82%	1.034%
4	2.560	380	395	415	rBV2	256187	475751	14.39%	3.088%
5	3.348	626	640	658	rBV2	78777	157374	4.76%	1.021%
6	3.859	782	799	826	rBV2	181843	446505	13.51%	2.898%
7	4.293	916	934	950	rBV3	17033	45335	1.37%	0.294%
8	4.657	1031	1047	1094	rBV2	732990	1900638	57.49%	12.335%
9	5.055	1156	1171	1188	rBV	198531	440863	13.33%	2.861%
10	5.306	1236	1249	1268	rVB	31580	68609	2.08%	0.445%
11	5.718	1357	1377	1408	rBV2	384135	1021792	30.91%	6.632%
12	6.242	1527	1540	1567	rBV	309182	605536	18.32%	3.930%
13	6.534	1615	1631	1657	rBV	1759821	3306210	100.00%	21.458%
14	6.686	1665	1678	1697	rVB	236188	471029	14.25%	3.057%
15	7.560	1939	1950	1974	rBV	116909	211738	6.40%	1.374%
16	7.891	2041	2053	2066	rBV	431857	747548	22.61%	4.852%
17	7.965	2066	2076	2097	rVB	350738	614737	18.59%	3.990%
18	8.174	2129	2141	2161	rBV	73754	129314	3.91%	0.839%
19	8.634	2267	2284	2326	rBV2	587497	1316820	39.83%	8.546%
20	9.412	2512	2526	2550	rBV	445130	765298	23.15%	4.967%
21	10.750	2930	2942	2958	rBV2	191072	309433	9.36%	2.008%
22	11.807	3256	3271	3295	rBV	387676	632996	19.15%	4.108%
23	12.187	3376	3389	3409	rBV	383473	639738	19.35%	4.152%
24	16.881	4840	4849	4859	rBV	47149	65875	1.99%	0.428%

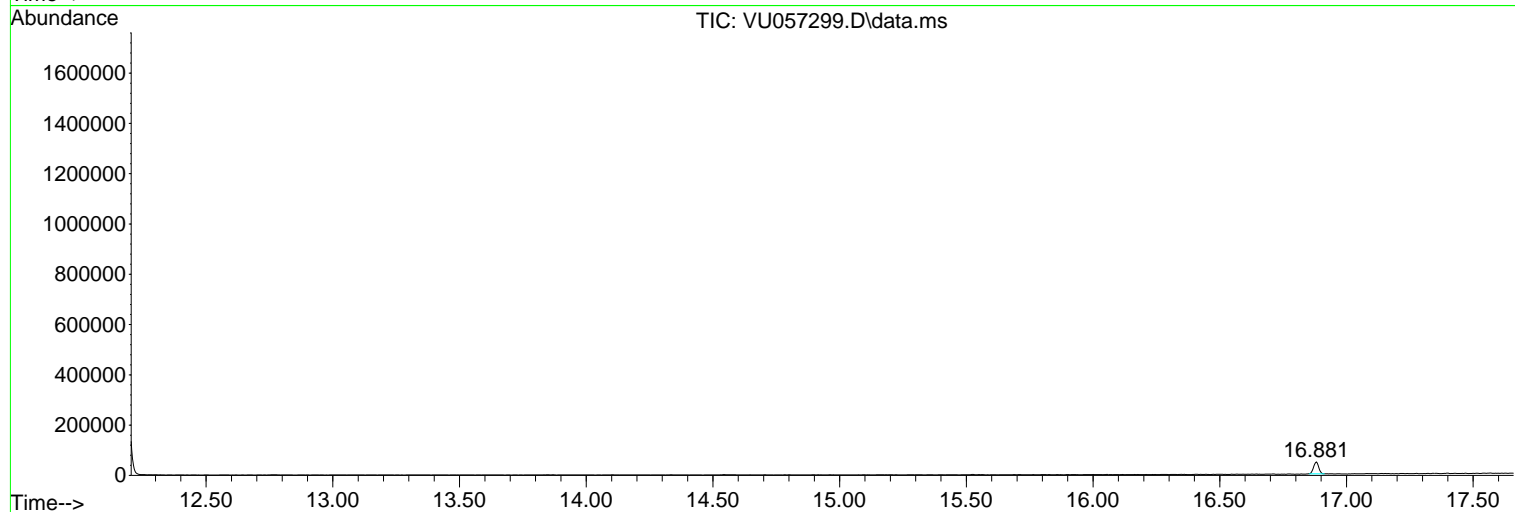
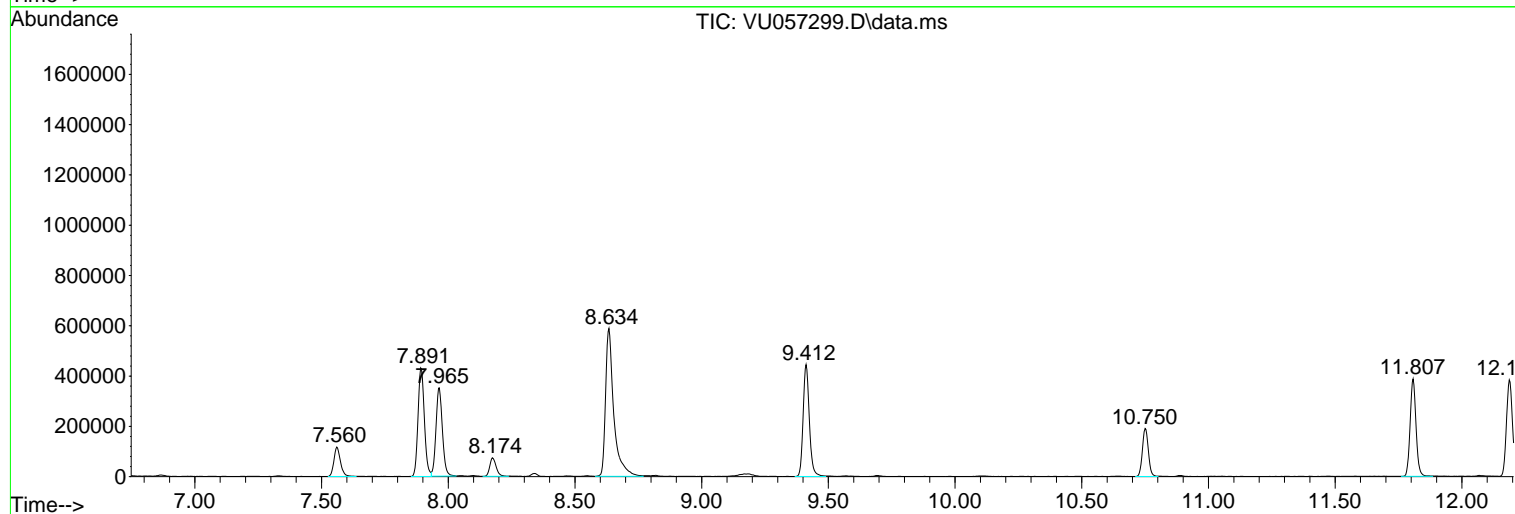
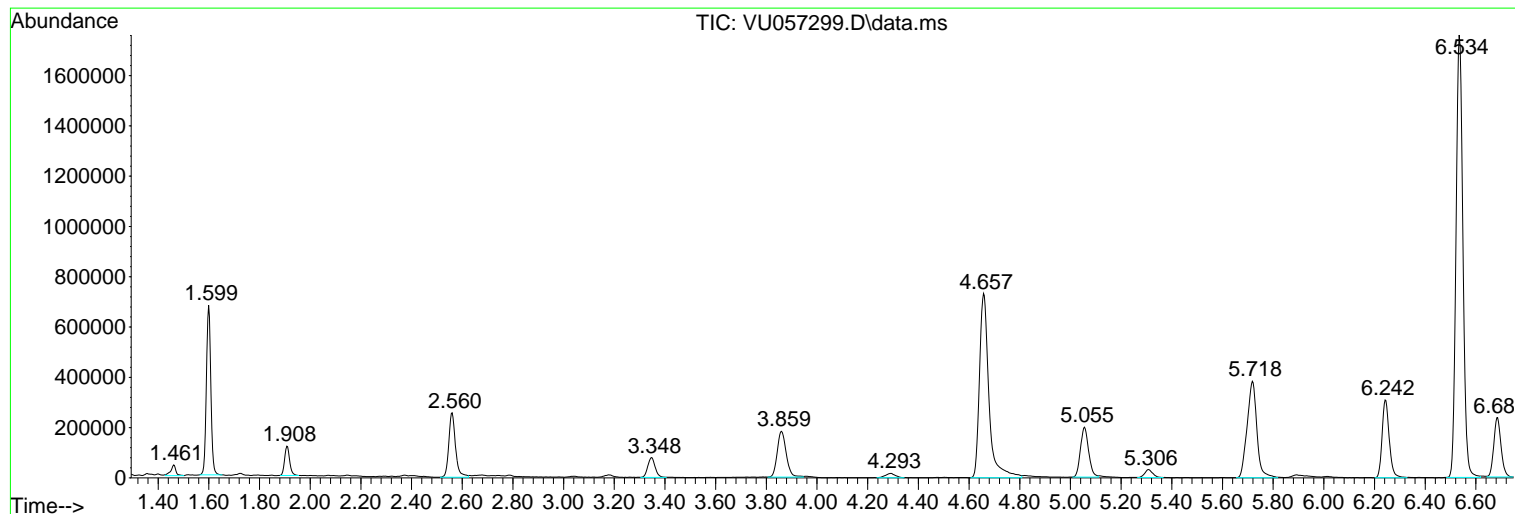
Sum of corrected areas: 15407987

Data Path : Z:\voasrv\HPCHEM1\MSVOA_U\Data\VU122723\
Data File : VU057299.D
Acq On : 27 Dec 2023 23:53
Operator : MD/SY
Sample : 06021-12
Misc : 25.0mL/MSVOA_U/WATER
ALS Vial : 23 Sample Multiplier: 1

Instrument :
MSVOA_U
ClientSampleId :
BH7Z4

Quant Method : Z:\voasrv\HPCHEM1\MSVOA_U\Method\SFAMUTR122723WMA.M
Quant Title : TRACE VOA SFAM1.0

TIC Library : C:\Database\NIST20.L
TIC Integration Parameters: LSCINT.P



Data Path : Z:\voasrv\HPCHEM1\MSVOA_U\Data\VU122723\
 Data File : VU057299.D
 Acq On : 27 Dec 2023 23:53
 Operator : MD/SY
 Sample : 06021-12
 Misc : 25.0mL/MSVOA_U/WATER
 ALS Vial : 23 Sample Multiplier: 1

Instrument :
 MSVOA_U
 ClientSampleId :
 BH7Z4

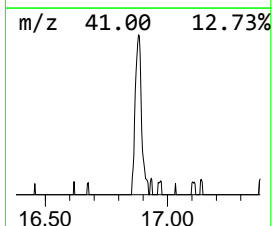
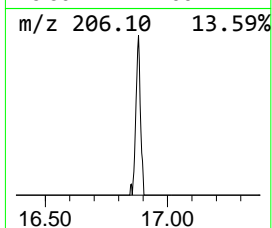
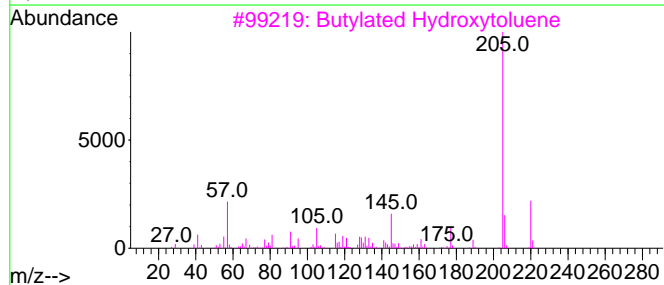
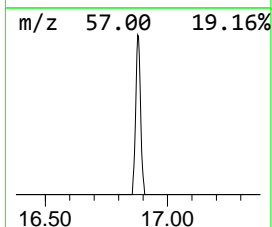
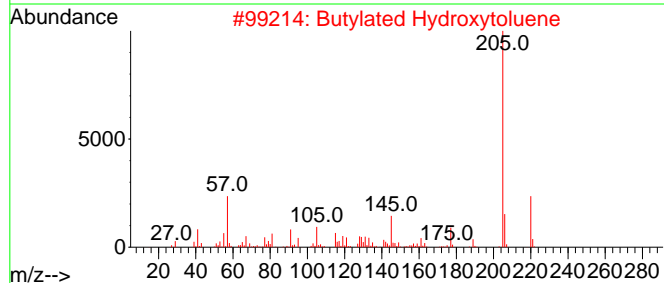
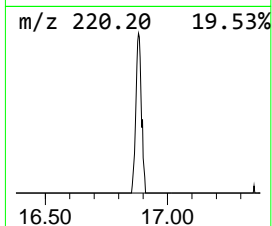
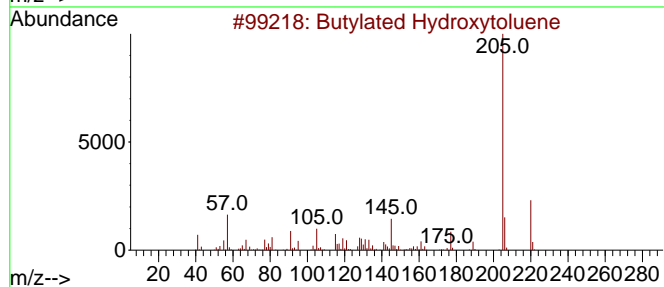
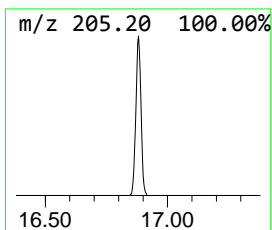
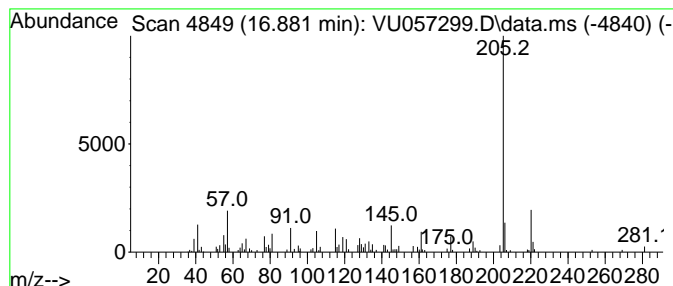
Quant Method : Z:\voasrv\HPCHEM1\MSVOA_U\Method\SFAMUTR122723WMA.M
 Quant Title : TRACE VOA SFAM1.0

TIC Library : C:\Database\NIST20.L
 TIC Integration Parameters: LSCINT.P

 Peak Number 2 Butylated Hydroxytoluene Concentration Rank 2

R.T.	EstConc	Area	Relative to ISTD	R.T.
16.881	0.52 ug/L	65875	1,4-Dichlorobenzene-d4	11.807

Hit#	of 5	Tentative ID	MW	MolForm	CAS#	Qual
1		Butylated Hydroxytoluene	220	C15H24O	000128-37-0	98
2		Butylated Hydroxytoluene	220	C15H24O	000128-37-0	95
3		Butylated Hydroxytoluene	220	C15H24O	000128-37-0	95
4		Ethyl 4-oxo-2-phenylpentanoate	220	C13H16O3	1000427-11-2	90
5		Butylated Hydroxytoluene	220	C15H24O	000128-37-0	90



Data Path : Z:\voasrv\HPCHEM1\MSVOA_U\Data\VU122723\
Data File : VU057299.D
Acq On : 27 Dec 2023 23:53
Operator : MD/SY
Sample : 06021-12
Misc : 25.0mL/MSVOA_U/WATER
ALS Vial : 23 Sample Multiplier: 1

Instrument :
MSVOA_U
ClientSampleId :
BH7Z4

Quant Method : Z:\voasrv\HPCHEM1\MSVOA_U\Method\SFAMUTR122723WMA.M
Quant Title : TRACE VOA SFAM1.0

TIC Library : C:\Database\NIST0.L
TIC Integration Parameters: LSCINT.P

TIC Top Hit name	RT	EstConc	Units	Response	--Internal Standard--			
					#	RT	Resp	Conc
Butylated Hydro...	16.881	0.5	ug/L	65875	3	11.807	632996	5.0