

Data Path : Z:\voasrv\HPCHEM1\MSVOA_U\Data\VU122822\
 Data File : VU052596.D
 Acq On : 28 Dec 2022 18:39
 Operator : JC/MD
 Sample : N6216-01
 Misc : 25.0mL/MSVOA_U/WATER
 ALS Vial : 19 Sample Multiplier: 1

Instrument :
 MSVOA_U
 ClientSampleId :
 H0AA1

Integration Parameters: rteint.p

Integrator: RTE

Smoothing : ON

Filtering: 5

Sampling : 1

Min Area: 3 % of largest Peak

Start Thrs: 0.1

Max Peaks: 100

Stop Thrs : 0

Peak Location: TOP

If leading or trailing edge < 100 prefer < Baseline drop else tangent >

Peak separation: 5

Method : Z:\voasrv\HPCHEM1\MSVOA_U\Method\SFAMUTR122022WMA.M

Title : TRACE VOA SFAM1.0

Signal : TIC: VU052596.D\data.ms

peak #	R.T. min	first scan	max scan	last scan	PK TY	peak height	corr. area	corr. % max.	% of total
1	1.359	3	6	27	rVB2	42188	58087	4.68%	0.859%
2	1.597	71	80	89	rBV2	76374	98279	7.92%	1.453%
3	1.916	171	179	188	rBV	70263	91917	7.41%	1.359%
4	2.565	370	381	398	rVB	122053	202655	16.34%	2.996%
5	4.662	1012	1033	1099	rBV2	86794	493149	39.76%	7.291%
6	5.060	1139	1157	1179	rBV	136632	317131	25.57%	4.689%
7	5.723	1339	1363	1390	rBV2	263249	712218	57.43%	10.530%
8	6.247	1511	1526	1549	rBV	246602	472506	38.10%	6.986%
9	6.687	1647	1663	1681	rBV	185180	363746	29.33%	5.378%
10	7.562	1923	1935	1952	rBV	80962	143256	11.55%	2.118%
11	7.893	2012	2038	2054	rBV	293228	602953	48.62%	8.914%
12	8.176	2117	2126	2142	rVB	55237	92685	7.47%	1.370%
13	8.632	2257	2268	2303	rBV	612253	1240191	100.00%	18.336%
14	9.414	2500	2511	2525	rBV	346875	572266	46.14%	8.461%
15	10.751	2916	2927	2942	rBV	174800	284201	22.92%	4.202%
16	10.886	2962	2969	2978	rVB3	9770	15884	1.28%	0.235%
17	11.806	3243	3255	3271	rBV	323647	513565	41.41%	7.593%
18	12.189	3362	3374	3395	rVB	292591	474606	38.27%	7.017%
19	17.455	5006	5012	5025	rBV8	8978	14514	1.17%	0.215%

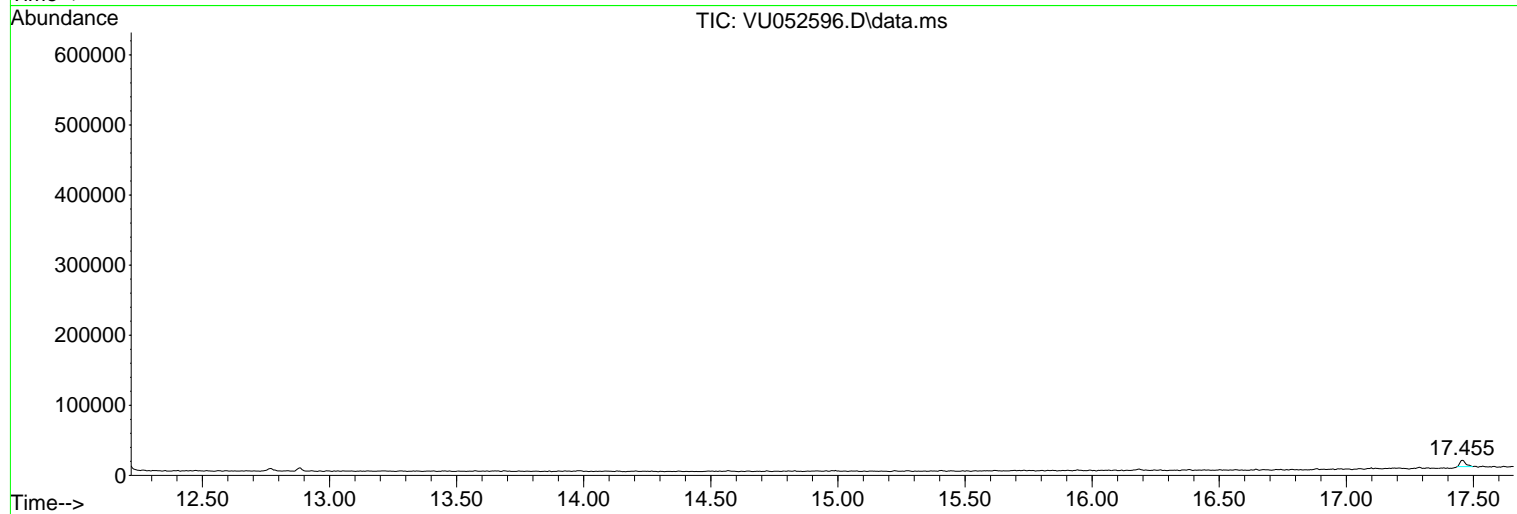
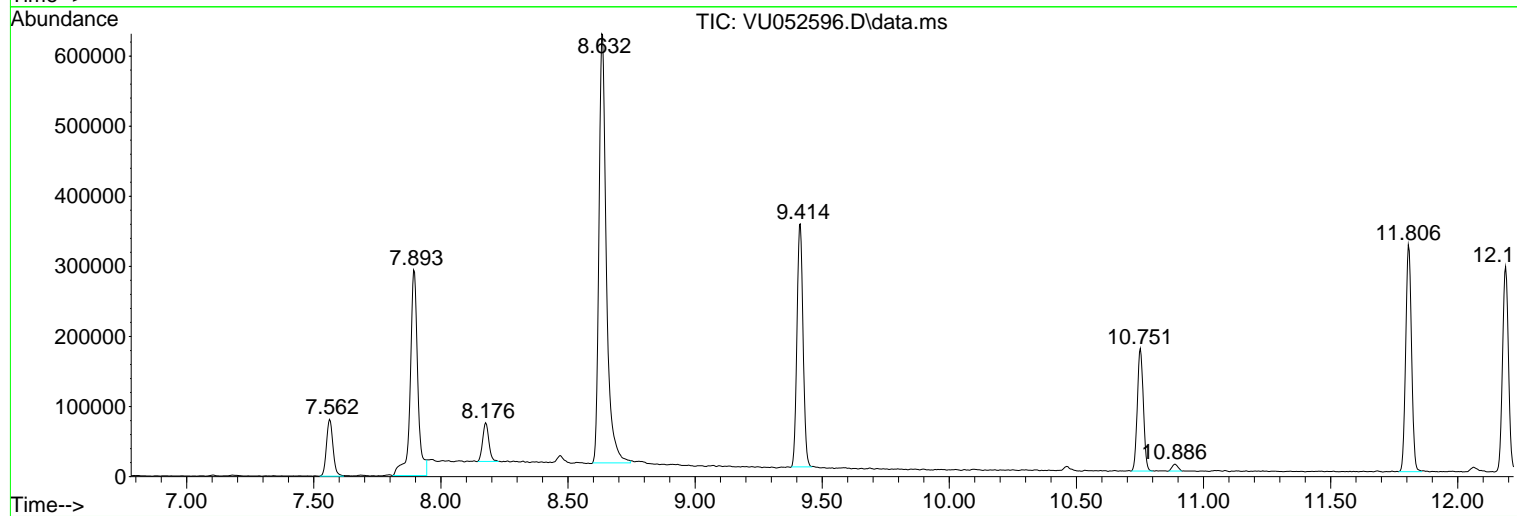
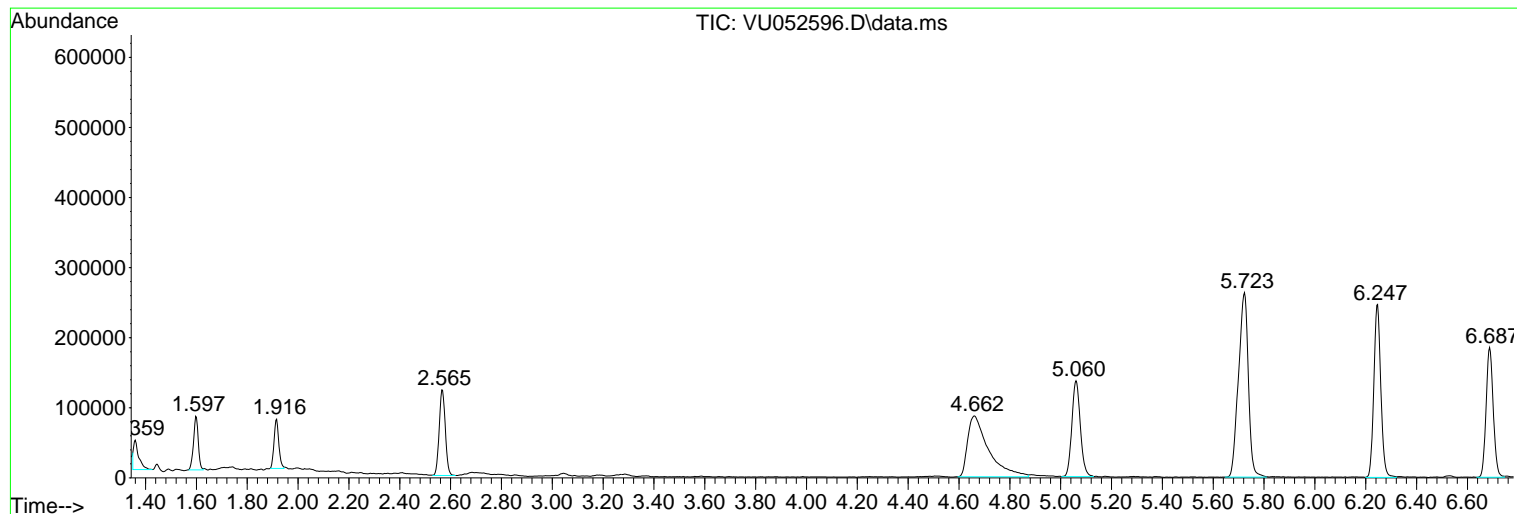
Sum of corrected areas: 6763809

Data Path : Z:\voasrv\HPCHEM1\MSVOA_U\Data\VU122822\
Data File : VU052596.D
Acq On : 28 Dec 2022 18:39
Operator : JC/MD
Sample : N6216-01
Misc : 25.0mL/MSVOA_U/WATER
ALS Vial : 19 Sample Multiplier: 1

Instrument :
MSVOA_U
ClientSampleId :
H0AA1

Quant Method : Z:\voasrv\HPCHEM1\MSVOA_U\Method\SFAMUTR122022WMA.M
Quant Title : TRACE VOA SFAM1.0

TIC Library : C:\Database\NIST20.L
TIC Integration Parameters: LSCINT.P



Data Path : Z:\voasrv\HPCHEM1\MSVOA_U\Data\VU122822\
 Data File : VU052596.D
 Acq On : 28 Dec 2022 18:39
 Operator : JC/MD
 Sample : N6216-01
 Misc : 25.0mL/MSVOA_U/WATER
 ALS Vial : 19 Sample Multiplier: 1

Instrument :
 MSVOA_U
 ClientSampleId :
 H0AA1

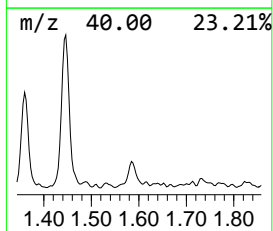
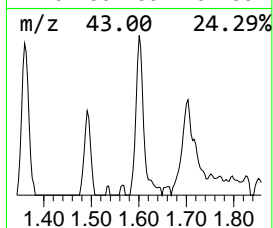
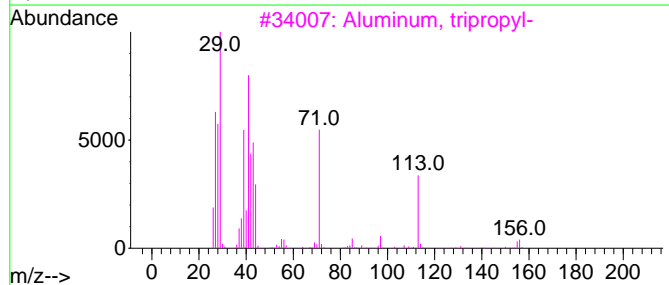
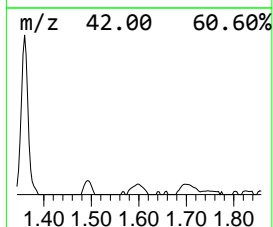
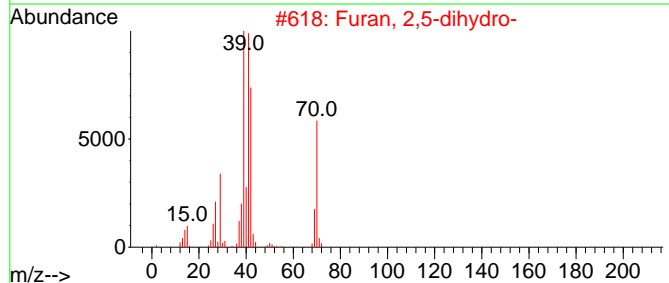
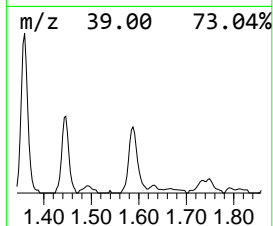
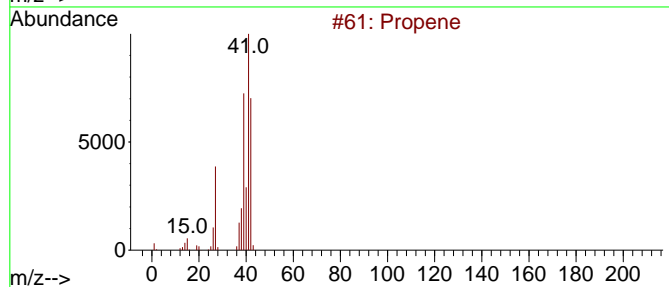
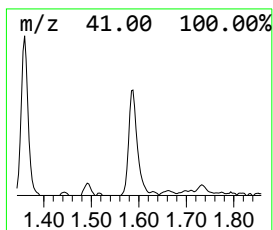
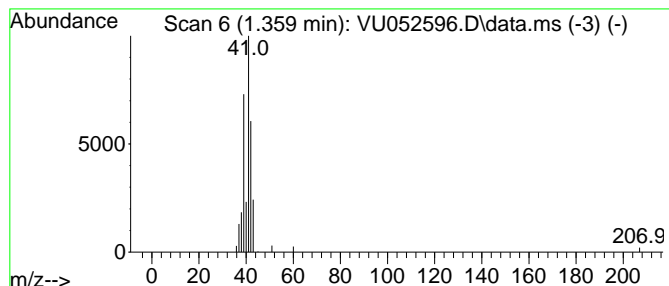
Quant Method : Z:\voasrv\HPCHEM1\MSVOA_U\Method\SFAMUTR122022WMA.M
 Quant Title : TRACE VOA SFAM1.0

TIC Library : C:\Database\NIST0.L
 TIC Integration Parameters: LSCINT.P

 Peak Number 1 (DEL) Alkane: Straight-Chai... Concentration Rank 2

R.T.	EstConc	Area	Relative to ISTD	R.T.
1.359	0.61 ug/L	58087	1,4-Difluorobenzene	6.247

Hit#	of 5	Tentative ID	MW	MolForm	CAS#	Qual
1		Propene	42	C3H6	000115-07-1	90
2		Furan, 2,5-dihydro-	70	C4H6O	001708-29-8	74
3		Aluminum, tripropyl-	156	C9H21Al	000102-67-0	74
4		Pyrimidin-4(3H)-one, 3-amino-2,6...	139	C6H9N3O	093098-74-9	64
5		2-Butenal, (E)-	70	C4H6O	000123-73-9	64



Data Path : Z:\voasrv\HPCHEM1\MSVOA_U\Data\VU122822\
Data File : VU052596.D
Acq On : 28 Dec 2022 18:39
Operator : JC/MD
Sample : N6216-01
Misc : 25.0mL/MSVOA_U/WATER
ALS Vial : 19 Sample Multiplier: 1

Instrument :
MSVOA_U
ClientSampleId :
H0AA1

Quant Method : Z:\voasrv\HPCHEM1\MSVOA_U\Method\SFAMUTR122022WMA.M
Quant Title : TRACE VOA SFAM1.0

TIC Library : C:\Database\NIST0.L
TIC Integration Parameters: LSCINT.P

TIC Top Hit name	RT	EstConc	Units	Response	--Internal Standard--			
					#	RT	Resp	Conc
(DEL) Alkane: S...	1.359	0.6	ug/L	58087	1	6.247	472506	5.0