

Data Path : Z:\voasrv\HPCHEM1\MSVOA\_U\Data\VU122823\  
 Data File : VU057342.D  
 Acq On : 28 Dec 2023 18:46  
 Operator : MD/SY  
 Sample : 06021-14DL 4X  
 Misc : 25.0mL/MSVOA\_U/WATER  
 ALS Vial : 12 Sample Multiplier: 1

Instrument :  
 MSVOA\_U  
 ClientSampleId :  
 BH7Z6DL

Integration Parameters: rteint.p  
 Integrator: RTE  
 Smoothing : ON Filtering: 5  
 Sampling : 1 Min Area: 3 % of largest Peak  
 Start Thrs: 0.1 Max Peaks: 100  
 Stop Thrs : 0 Peak Location: TOP

If leading or trailing edge < 100 prefer < Baseline drop else tangent >  
 Peak separation: 5

Method : Z:\voasrv\HPCHEM1\MSVOA\_U\Method\SFAMUTR122723WMA.M  
 Title : TRACE VOA SFAM1.0

Signal : TIC: VU057342.D\data.ms

peak #	R.T. min	first scan	max scan	last scan	PK TY	peak height	corr. area	corr. % max.	% of total
1	1.374	19	26	35	rVB	22819	26400	2.62%	0.301%
2	1.596	87	95	107	rBV	134495	150855	14.97%	1.718%
3	1.911	183	193	208	rBV	113944	154517	15.33%	1.759%
4	2.560	380	395	412	rBV	191905	312604	31.02%	3.559%
5	3.039	530	544	562	rVB2	28901	57971	5.75%	0.660%
6	3.181	571	588	603	rBV2	21455	50052	4.97%	0.570%
7	4.641	1025	1042	1082	rBV	123225	399259	39.61%	4.546%
8	5.055	1151	1171	1201	rBV	186275	423478	42.02%	4.821%
9	5.718	1356	1377	1408	rBV2	349151	925389	91.81%	10.536%
10	6.242	1528	1540	1564	rBV	303072	590377	58.57%	6.722%
11	6.538	1622	1632	1645	rVB6	10618	19884	1.97%	0.226%
12	6.685	1660	1678	1700	rBV	226093	445566	44.21%	5.073%
13	7.560	1938	1950	1969	rBV	104015	184837	18.34%	2.104%
14	7.891	2041	2053	2072	rBV	380339	666570	66.13%	7.589%
15	8.177	2126	2142	2162	rBV	62923	113839	11.29%	1.296%
16	8.634	2268	2284	2314	rBV2	492178	1007901	100.00%	11.475%
17	9.415	2511	2527	2530	rBV	471459	730547	72.48%	8.317%
18	9.441	2531	2535	2570	rVB	630903	964717	95.72%	10.983%
19	10.753	2929	2943	2962	rBV	171210	283900	28.17%	3.232%
20	11.807	3260	3271	3290	rBV	392679	658210	65.31%	7.494%
21	12.190	3376	3390	3412	rBV	369779	616524	61.17%	7.019%

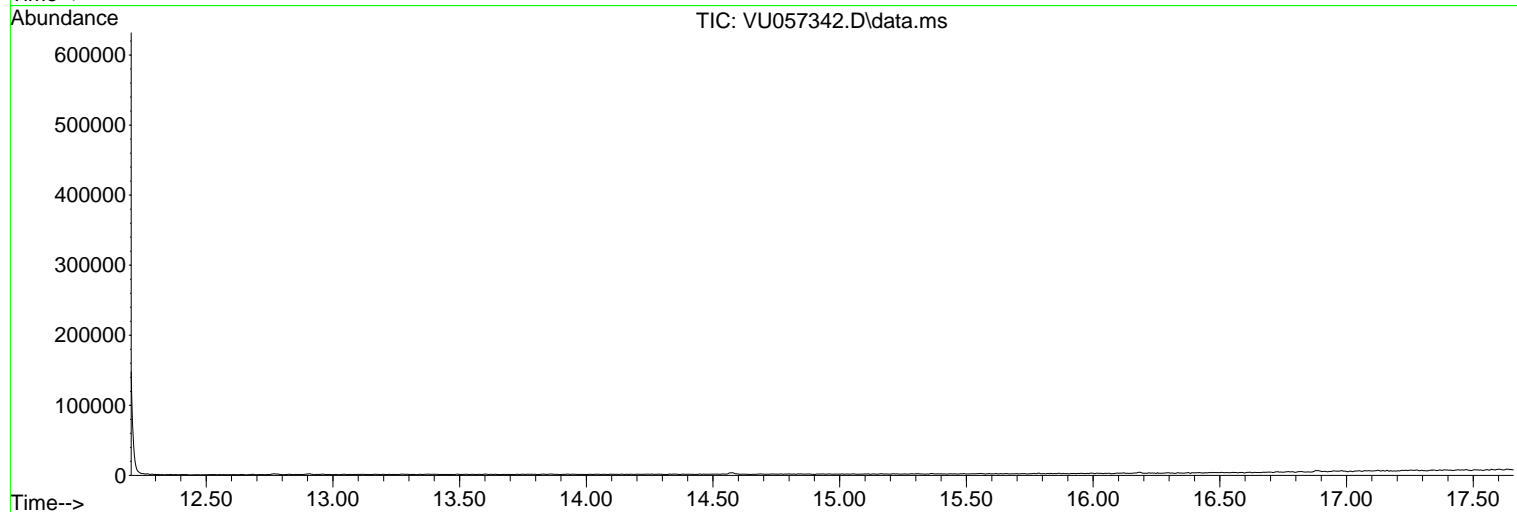
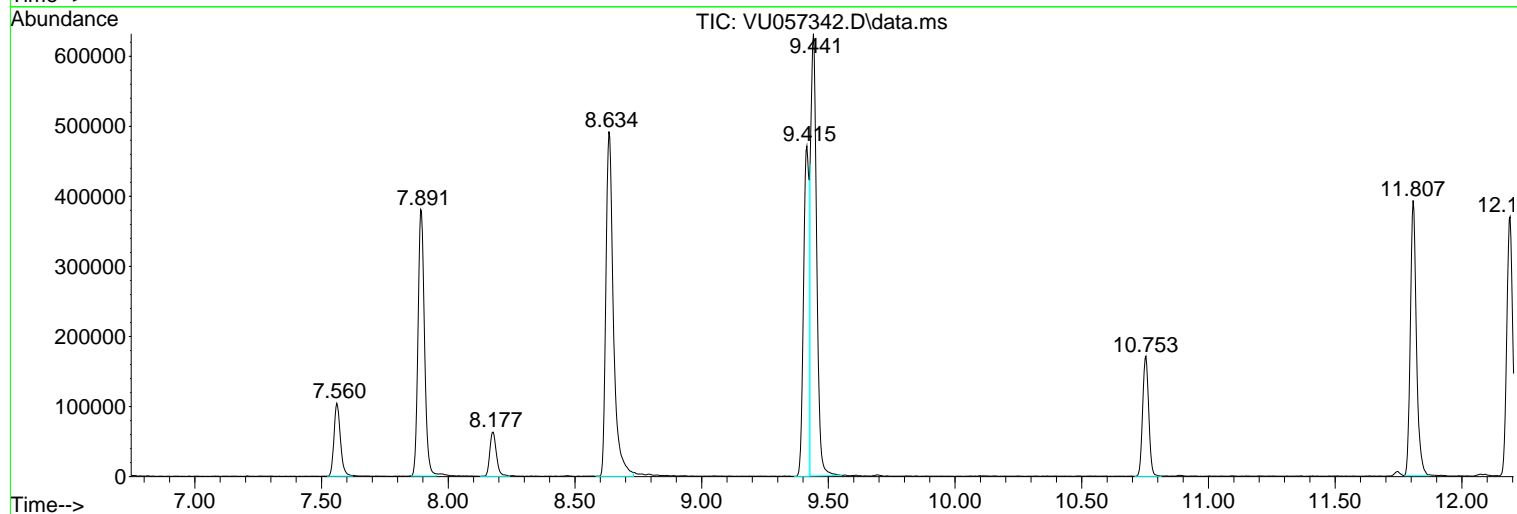
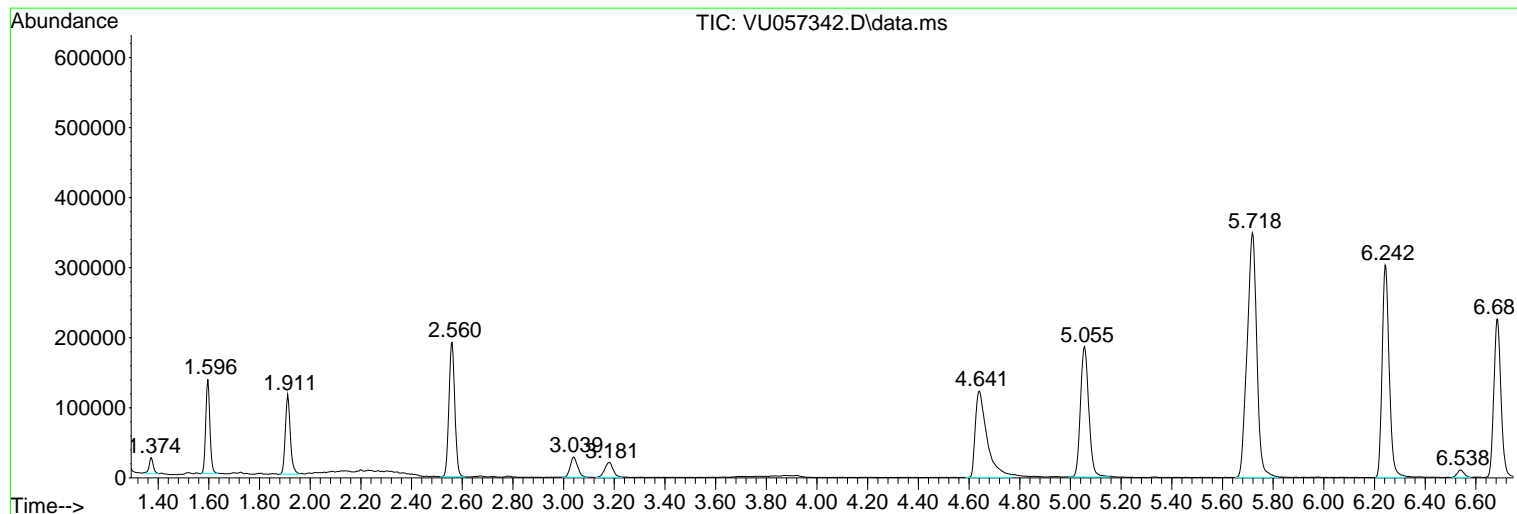
Sum of corrected areas: 8783397

Data Path : Z:\voasrv\HPCHEM1\MSVOA\_U\Data\VU122823\  
Data File : VU057342.D  
Acq On : 28 Dec 2023 18:46  
Operator : MD/SY  
Sample : 06021-14DL 4X  
Misc : 25.0mL/MSVOA\_U/WATER  
ALS Vial : 12 Sample Multiplier: 1

Instrument :  
MSVOA\_U  
ClientSampleId :  
BH7Z6DL

Quant Method : Z:\voasrv\HPCHEM1\MSVOA\_U\Method\SFAMUTR122723WMA.M  
Quant Title : TRACE VOA SFAM1.0

TIC Library : C:\Database\NIST20.L  
TIC Integration Parameters: LSCINT.P



Library Search Compound Report

Data Path : Z:\voasrv\HPCHEM1\MSVOA\_U\Data\VU122823\  
Data File : VU057342.D  
Acq On : 28 Dec 2023 18:46  
Operator : MD/SY  
Sample : 06021-14DL 4X  
Misc : 25.0mL/MSVOA\_U/WATER  
ALS Vial : 12 Sample Multiplier: 1

Instrument :  
MSVOA\_U  
ClientSampleId :  
BH7Z6DL

Quant Method : Z:\voasrv\HPCHEM1\MSVOA\_U\Method\SFAMUTR122723WMA.M  
Quant Title : TRACE VOA SFAM1.0

TIC Library : C:\Database\NIST20.L  
TIC Integration Parameters: LSCINT.P

No Library Search Compounds Detected

\*\*\*\*\*

Data Path : Z:\voasrv\HPCHEM1\MSVOA\_U\Data\VU122823\  
Data File : VU057342.D  
Acq On : 28 Dec 2023 18:46  
Operator : MD/SY  
Sample : 06021-14DL 4X  
Misc : 25.0mL/MSVOA\_U/WATER  
ALS Vial : 12 Sample Multiplier: 1

Instrument :  
MSVOA\_U  
ClientSampleId :  
BH7Z6DL

Quant Method : Z:\voasrv\HPCHEM1\MSVOA\_U\Method\SFAMUTR122723WMA.M  
Quant Title : TRACE VOA SFAM1.0

TIC Library : C:\Database\NIST0.L  
TIC Integration Parameters: LSCINT.P

TIC Top Hit name	RT	EstConc	Units	Response	--Internal Standard--		
					#	RT	Resp Conc

---