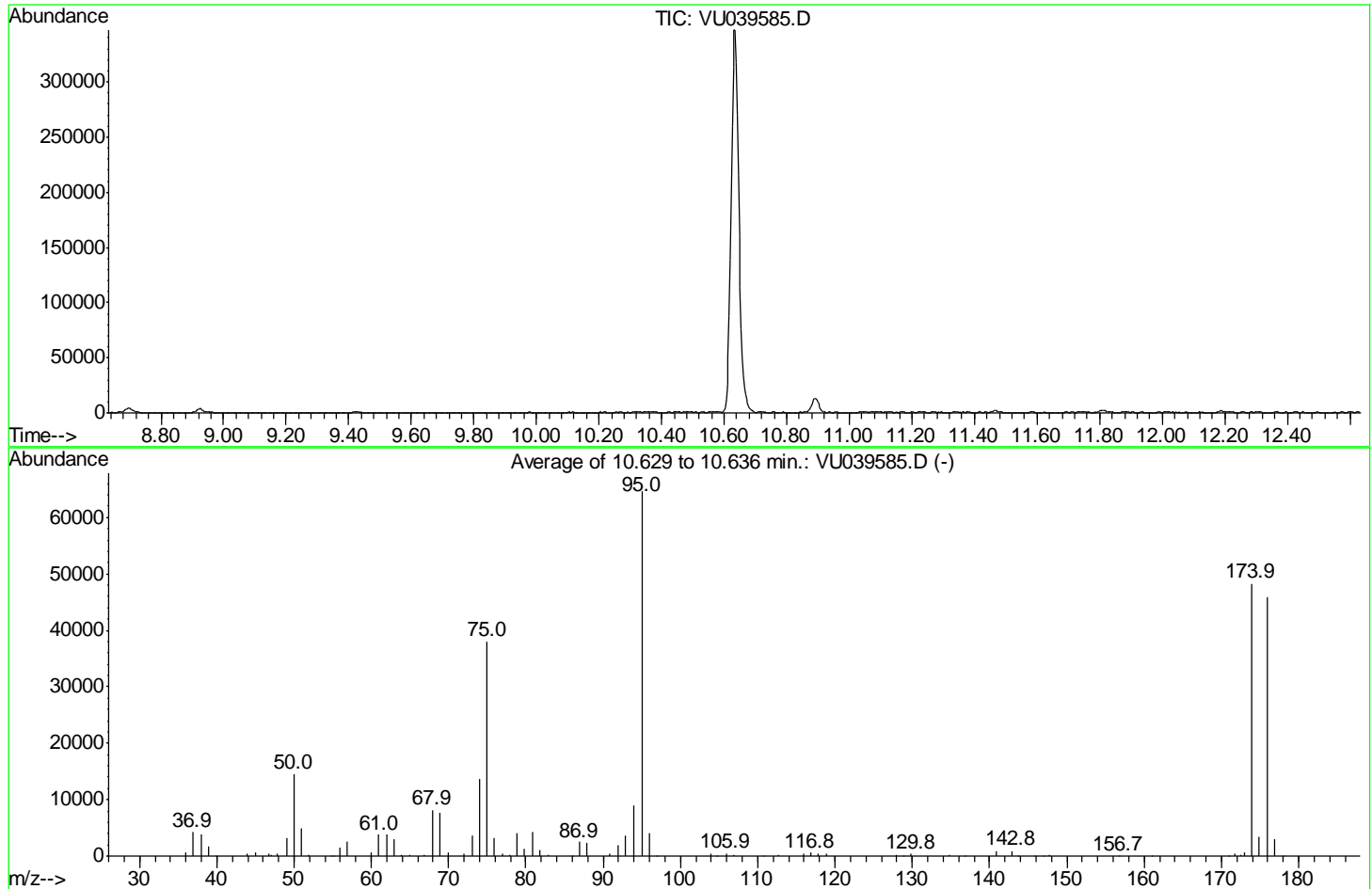


Data Path : Z:\voasrv\HPCHEM1\MSVOA_U\Data\VU072120\
 Data File : VU039585.D
 Acq On : 21 Jul 2020 08:32
 Operator : SY/MD
 Sample : BFB06
 Misc : 25.0mL/MSVOA_U/WATER
 ALS Vial : 1 Sample Multiplier: 1

Instrument :
 MSVOA_U
 ClientSampleId :
 BFB06

Integration File: rteint.p

Method : Z:\VOASRV\HPCHEM1\MSVOA_U\METHOD\SOMUTR072120WMA.M
 Title : TRACE VOA SOM01.0
 Last Update : Tue Jul 21 10:01:37 2020



AutoFind: Scans 2889, 2890, 2891; Background Corrected with Scan 2876

Target Mass	Rel. to Mass	Lower Limit%	Upper Limit%	Rel. Abn%	Raw Abn	Result Pass/Fail
50	95	15	40	22.6	14598	PASS
75	95	30	80	58.8	38000	PASS
95	95	100	100	100.0	64610	PASS
96	95	5	9	6.4	4123	PASS
173	174	0.00	2	1.4	687	PASS
174	95	50	120	74.6	48221	PASS
175	174	5	9	7.1	3419	PASS
176	174	95	101	95.2	45898	PASS
177	176	5	9	6.7	3086	PASS

m/z	Abundance
36.00	177.0
40.00	180.0
43.80	266.0

Instrument :
MSVOA_U
ClientSampleId :
BFB06

m/z	Abundance
36.00	692.0
36.90	4190.0
38.00	3827.0
39.00	1722.0
39.80	254.0
43.90	733.0
45.00	715.0
46.80	578.0
47.80	465.0
49.00	2957.0
50.00	13763.0
51.00	4653.0
51.90	185.0
54.80	149.0
55.90	1398.0
56.90	2376.0
60.00	506.0
61.00	3473.0
62.00	3657.0
63.00	2790.0
63.80	292.0
64.90	197.0
66.90	196.0
67.90	7562.0
68.90	7023.0
69.90	719.0
71.90	473.0
73.00	3506.0
74.00	12779.0
75.00	36040.0
75.90	2991.0
76.90	531.0
78.00	269.0
78.90	3754.0
79.80	1156.0
80.90	4007.0
81.80	983.0
82.90	125.0
86.00	110.0
86.90	2326.0
87.90	2324.0
90.80	405.0
92.00	1800.0
92.90	3352.0
93.90	8437.0
95.00	60720.0
96.00	3763.0
97.00	101.0
103.90	351.0
105.90	401.0
106.80	103.0
112.60	106.0
115.90	342.0
116.80	613.0
117.80	393.0
118.90	383.0
127.90	210.0
128.90	123.0
129.80	356.0
134.80	104.0
136.80	108.0
140.90	774.0
142.80	932.0
147.70	181.0
156.70	112.0
171.80	313.0
172.90	625.0
173.90	43472.0
174.90	3146.0
175.90	42312.0
176.90	2905.0

Instrument :
MSVOA_U
ClientSampleId :
BFB06

m/z	Abundance
36.00	779.0
36.90	4336.0
38.00	4122.0
39.00	1769.0
39.80	226.0
43.90	677.0
45.00	692.0
46.80	568.0
47.80	473.0
49.00	3300.0
50.00	15061.0
51.00	5178.0
51.90	189.0
54.80	162.0
55.20	149.0
55.90	1496.0
56.90	2651.0
60.00	580.0
60.90	3943.0
62.00	3948.0
63.00	3112.0
63.90	267.0
64.90	190.0
66.90	197.0
67.90	8402.0
68.90	7801.0
69.90	706.0
71.90	393.0
73.00	3740.0
74.00	13997.0
75.00	39224.0
75.90	3232.0
76.90	507.0
78.00	331.0
78.90	4243.0
79.80	1261.0
80.90	4303.0
81.80	1002.0
83.00	135.0
86.00	100.0
86.90	2555.0
87.90	2416.0
90.80	479.0
91.90	1899.0
92.90	3728.0
93.90	9328.0
95.00	66720.0
96.00	4239.0
96.90	100.0
103.90	424.0
104.70	108.0
105.90	458.0
106.80	135.0
112.60	137.0
115.90	359.0
116.80	566.0
117.80	459.0
118.90	384.0
127.90	252.0
128.90	120.0
129.80	415.0
134.80	191.0
136.80	105.0
140.90	919.0
142.80	974.0
145.90	120.0
147.70	163.0
156.70	113.0
161.00	104.0
170.90	123.0
171.80	382.0
172.50	480.0
173.00	708.0
173.90	49624.0
174.90	3544.0
175.90	47248.0
176.90	3222.0
177.90	107.0

Instrument :
MSVOA_U
ClientSampleId :
BFB06

m/z	Abundance
36.00	784.0
36.90	4119.0
37.90	3898.0
38.90	1640.0
39.90	244.0
43.90	610.0
44.90	613.0
47.00	573.0
47.80	433.0
49.00	3451.0
50.00	14971.0
51.00	4989.0
51.90	190.0
55.10	175.0
56.00	1444.0
56.90	2653.0
59.90	679.0
60.90	4103.0
62.00	3916.0
63.00	3013.0
64.00	238.0
64.90	175.0
66.90	189.0
67.90	8417.0
68.90	8008.0
70.00	709.0
71.90	339.0
73.00	3787.0
74.00	14092.0
75.00	38736.0
75.90	3132.0
76.90	420.0
77.90	287.0
78.90	4298.0
79.80	1250.0
80.90	4203.0
81.80	983.0
83.00	102.0
86.90	2601.0
87.90	2342.0
90.80	434.0
91.90	1923.0
92.90	3746.0
93.90	8995.0
95.00	66392.0
96.00	4368.0
96.80	115.0
103.90	480.0
105.90	502.0
106.90	139.0
110.80	140.0
112.70	125.0
115.90	335.0
116.80	459.0
117.80	446.0
118.90	364.0
127.90	271.0
129.90	367.0
134.80	243.0
141.00	919.0
142.90	984.0
143.70	115.0
145.90	117.0
147.00	108.0
147.80	156.0
156.70	101.0
170.90	104.0
171.80	385.0
173.00	728.0
173.90	51568.0
174.90	3568.0
175.90	48136.0
176.90	3132.0
178.00	117.0

Instrument :
MSVOA_U
ClientSampleId :
BFB06