

Data Path : Z:\voasrv\HPCHEM1\MSVOA_U\Data\VU013122\
 Data File : VU046934.D
 Acq On : 31 Jan 2022 22:21
 Operator : SY/MD
 Sample : N1328-05DL 200X
 Misc : 25.0mL/MSVOA_U/WATER
 ALS Vial : 30 Sample Multiplier: 1

Instrument :
 MSVOA_U
ClientSampleId :
 COHM4DL

Quant Time: Feb 01 03:01:24 2022
 Quant Method : Z:\voasrv\HPCHEM1\MSVOA_U\Method\SFAMUTR011822WMA.M
 Quant Title : TRACE VOA SFAM1.0
 QLast Update : Tue Feb 01 01:39:38 2022
 Response via : Initial Calibration

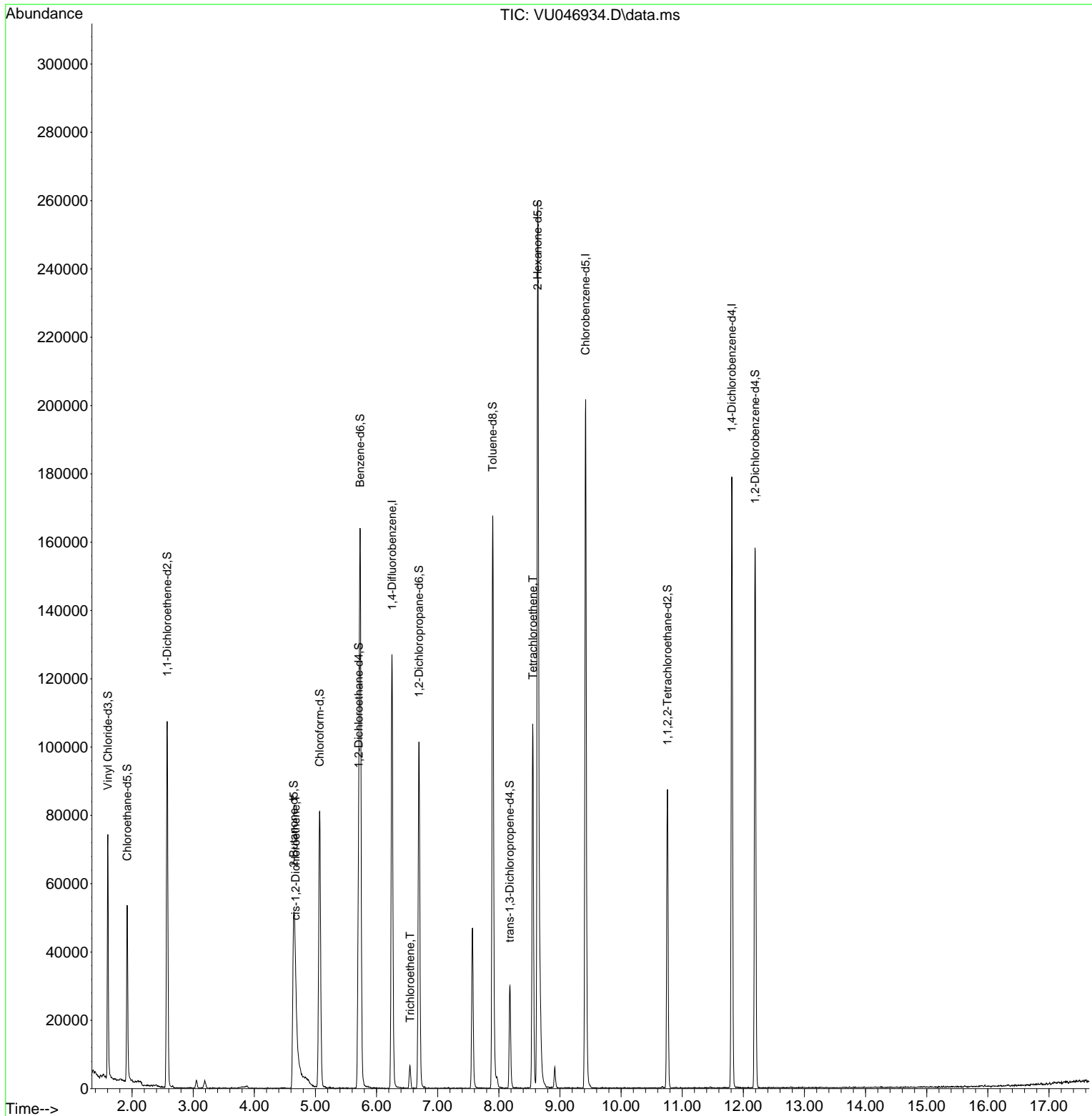
Compound	R.T.	QIon	Response	Conc	Units	Dev(Min)
Internal Standards						
1) 1,4-Difluorobenzene	6.253	114	105538	5.000	ug/L	0.00
28) Chlorobenzene-d5	9.420	117	118771	5.000	ug/L	0.00
58) 1,4-Dichlorobenzene-d4	11.812	152	48200	5.000	ug/L	0.00
System Monitoring Compounds						
4) Vinyl Chloride-d3	1.604	65	53375	5.968	ug/L	0.00
Spiked Amount	5.000	Range 40 - 130	Recovery	=	119.400%	
7) Chloroethane-d5	1.919	69	40899	5.805	ug/L	0.00
Spiked Amount	5.000	Range 65 - 130	Recovery	=	116.000%	
11) 1,1-Dichloroethene-d2	2.575	65	20665	5.809	ug/L	0.00
Spiked Amount	5.000	Range 60 - 125	Recovery	=	116.200%	
20) 2-Butanone-d5	4.646	46	116021	43.793	ug/L	0.00
Spiked Amount	50.000	Range 40 - 130	Recovery	=	87.580%	
24) Chloroform-d	5.070	84	78514	5.001	ug/L	0.00
Spiked Amount	5.000	Range 70 - 125	Recovery	=	100.000%	
26) 1,2-Dichloroethane-d4	5.707	65	43595	5.099	ug/L	0.00
Spiked Amount	5.000	Range 70 - 130	Recovery	=	102.000%	
32) Benzene-d6	5.732	84	157452	4.511	ug/L	0.00
Spiked Amount	5.000	Range 70 - 125	Recovery	=	90.200%	
36) 1,2-Dichloropropane-d6	6.694	67	49518	4.725	ug/L	0.00
Spiked Amount	5.000	Range 60 - 140	Recovery	=	94.400%	
41) Toluene-d8	7.899	98	121836	3.813	ug/L	0.00
Spiked Amount	5.000	Range 70 - 130	Recovery	=	76.200%	
43) trans-1,3-Dichloroprop...	8.179	79	18233	3.961	ug/L	0.00
Spiked Amount	5.000	Range 55 - 130	Recovery	=	79.200%	
46) 2-Hexanone-d5	8.636	63	107280	39.363	ug/L	0.00
Spiked Amount	50.000	Range 45 - 130	Recovery	=	78.720%	
56) 1,1,2,2-Tetrachloroeth...	10.758	84	45344	4.309	ug/L	0.00
Spiked Amount	5.000	Range 65 - 120	Recovery	=	86.200%	
66) 1,2-Dichlorobenzene-d4	12.192	152	41717	4.615	ug/L	0.00
Spiked Amount	5.000	Range 80 - 120	Recovery	=	92.400%	
Target Compounds						
22) cis-1,2-Dichloroethene	4.674	96	4244	0.630	ug/L	95
34) Trichloroethene	6.549	95	2316	0.319	ug/L	87
47) Tetrachloroethene	8.555	164	24517	4.152	ug/L	93

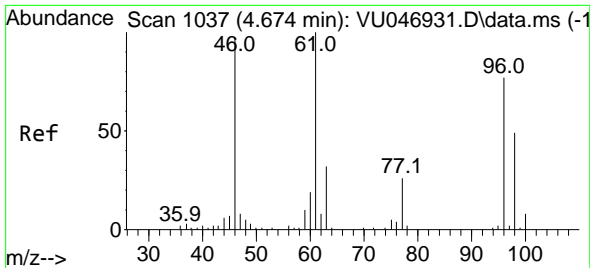
(#) = qualifier out of range (m) = manual integration (+) = signals summed

Data Path : Z:\voasrv\HPCHEM1\MSVOA_U\Data\VU013122\
 Data File : VU046934.D
 Acq On : 31 Jan 2022 22:21
 Operator : SY/MD
 Sample : N1328-05DL 200X
 Misc : 25.0mL/MSVOA_U/WATER
 ALS Vial : 30 Sample Multiplier: 1

Instrument :
 MSVOA_U
 ClientSampleId :
 C0HM4DL

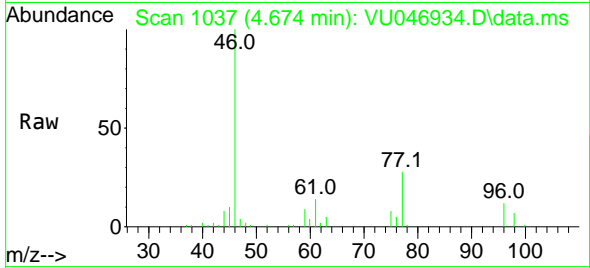
Quant Time: Feb 01 03:01:24 2022
 Quant Method : Z:\voasrv\HPCHEM1\MSVOA_U\Method\SFAMUTR011822WMA.M
 Quant Title : TRACE VOA SFAM1.0
 QLast Update : Tue Feb 01 01:39:38 2022
 Response via : Initial Calibration



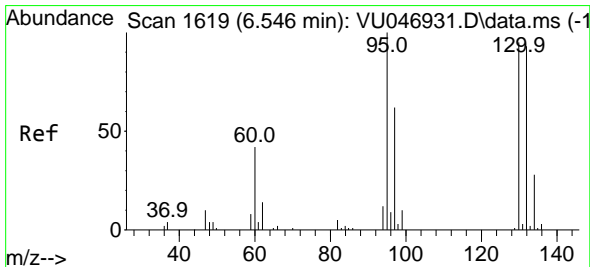
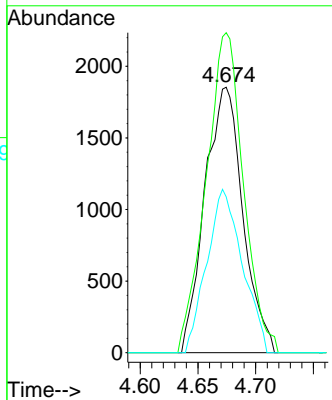
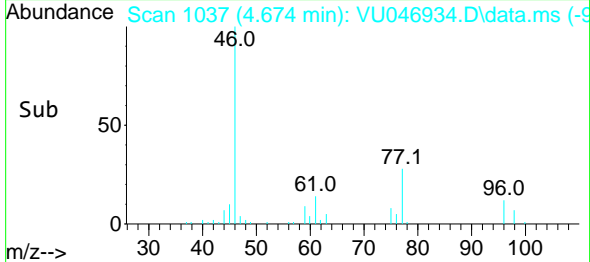


#22
 cis-1,2-Dichloroethene
 Concen: 0.630 ug/L
 RT: 4.674 min Scan# 1037
 Delta R.T. -0.000 min
 Lab File: VU046934.D
 Acq: 31 Jan 2022 22:21

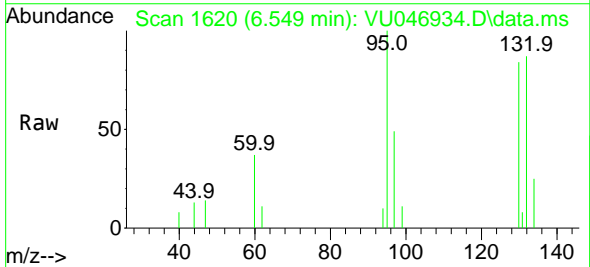
Instrument : MSVOA_U
 ClientSampleId : COHM4DL



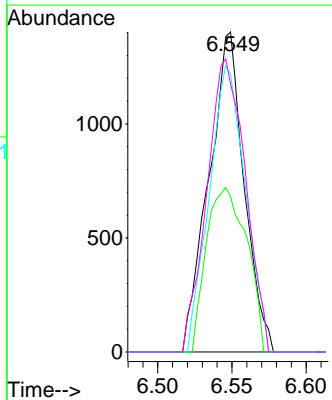
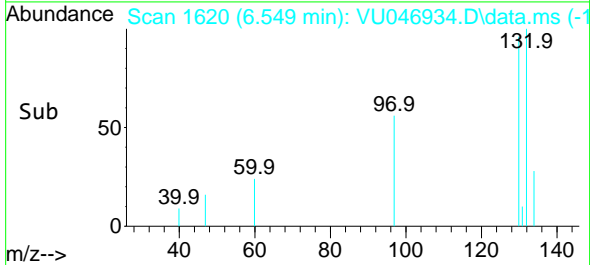
Tgt Ion: 96 Resp: 4244
 Ion Ratio Lower Upper
 96 100
 61 120.6 88.5 164.3
 98 58.7 44.4 82.5

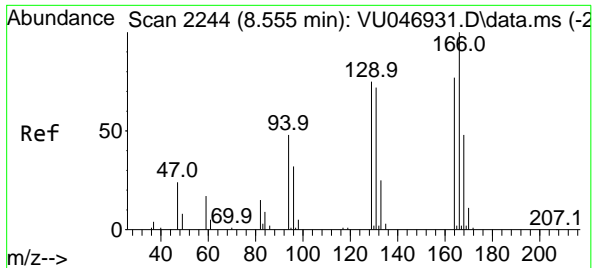


#34
 Trichloroethene
 Concen: 0.319 ug/L
 RT: 6.549 min Scan# 1620
 Delta R.T. 0.003 min
 Lab File: VU046934.D
 Acq: 31 Jan 2022 22:21



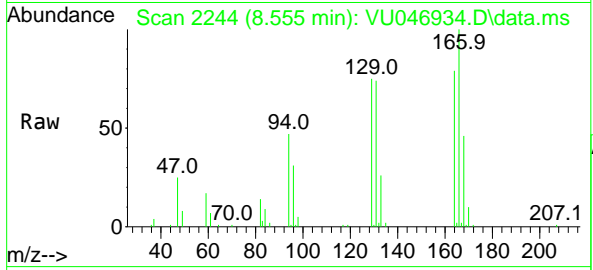
Tgt Ion: 95 Resp: 2316
 Ion Ratio Lower Upper
 95 100
 97 48.5 46.5 86.5
 132 86.8 65.1 120.9
 130 83.7 67.3 124.9





#47
 Tetrachloroethene
 Concen: 4.152 ug/L
 RT: 8.555 min Scan# 21
 Delta R.T. -0.000 min
 Lab File: VU046934.D
 Acq: 31 Jan 2022 22:21

Instrument : MSVOA_U
 ClientSampleId : C0HM4DL



Tgt Ion:164 Resp: 24517

Ion	Ratio	Lower	Upper
164	100		
129	94.9	71.8	133.4
131	92.8	68.5	127.3
166	126.1	94.1	174.8

