

Data Path : Z:\voasrv\HPCHEM1\MSVOA\_U\Data\VU021122\  
 Data File : VU047111.D  
 Acq On : 11 Feb 2022 13:45  
 Operator : SY/MD  
 Sample : N1462-06  
 Misc : 5.0mL/MSVOA\_U/WATER  
 ALS Vial : 11 Sample Multiplier: 1

Instrument :  
 MSVOA\_U  
 ClientSampleId :  
 F4M39

Integration Parameters: LSCINT.P

Integrator: RTE  
 Smoothing : OFF  
 Sampling : 1  
 Start Thrs : 0.2  
 Stop Thrs : 0

Filtering: 5  
 Min Area: 0 % of largest Peak  
 Max Peaks: 100  
 Peak Location: TOP

If leading or trailing edge < 100 prefer < Baseline drop else tangent >  
 Peak separation: 5

Method : Z:\voasrv\HPCHEM1\MSVOA\_U\Method\SFAMULM021022WMA.M  
 Title : VOC Analysis

Signal : TIC: VU047111.D\data.ms

peak #	R.T. min	first scan	max scan	last scan	PK TY	peak height	corr. area	corr. % max.	% of total
1	1.604	75	82	101	rVB	234477	277451	14.28%	1.739%
2	1.922	172	181	201	rBV	183225	257701	13.26%	1.616%
3	2.575	372	384	402	rBV	390911	658066	33.86%	4.125%
4	3.034	523	527	530	rBV4	1184	1158	0.06%	0.007%
5	3.054	530	533	539	rBV7	1286	1254	0.06%	0.008%
6	3.192	564	576	583	rVB7	2159	4318	0.22%	0.027%
7	3.411	642	644	648	rVB4	1123	702	0.04%	0.004%
8	3.433	648	651	654	rBV4	873	712	0.04%	0.004%
9	3.555	685	689	692	rBV4	1283	956	0.05%	0.006%
10	3.774	753	757	760	rBV6	1064	887	0.05%	0.006%
11	3.835	772	776	780	rBV6	1240	1299	0.07%	0.008%
12	3.944	806	810	813	rBV4	908	754	0.04%	0.005%
13	3.977	816	820	823	rVB4	979	724	0.04%	0.005%
14	3.996	823	826	829	rVB5	1088	755	0.04%	0.005%
15	4.022	829	834	835	rBV4	917	783	0.04%	0.005%
16	4.054	843	844	849	rBV5	710	660	0.03%	0.004%
17	4.198	885	889	893	rVV6	826	745	0.04%	0.005%
18	4.231	896	899	906	rVB7	790	734	0.04%	0.005%
19	4.292	914	918	923	rVB8	970	887	0.05%	0.006%
20	4.401	948	952	956	rVB6	1165	807	0.04%	0.005%
21	4.446	963	966	971	rVB6	1007	828	0.04%	0.005%
22	4.485	971	978	979	rBV6	976	857	0.04%	0.005%
23	4.536	989	994	995	rBV4	1076	810	0.04%	0.005%
24	4.575	1000	1006	1009	rBV7	1165	1326	0.07%	0.008%
25	4.636	1009	1025	1058	rBV	229254	714134	36.75%	4.477%
26	5.070	1143	1160	1179	rVV	335960	740557	38.11%	4.643%
27	5.276	1222	1224	1227	rBV3	1045	803	0.04%	0.005%
28	5.485	1283	1289	1296	rVB9	1406	1773	0.09%	0.011%
29	5.530	1296	1303	1308	rBV8	1497	1866	0.10%	0.012%
30	5.729	1342	1365	1384	rBV2	715413	1943359	100.00%	12.183%
31	5.983	1439	1444	1447	rBV6	1153	1172	0.06%	0.007%
32	6.253	1509	1528	1558	rBV	555798	1092444	56.21%	6.849%
33	6.546	1609	1619	1627	rBV6	8872	18845	0.97%	0.118%
34	6.693	1650	1665	1684	rBV	456664	883366	45.46%	5.538%
35	7.002	1755	1761	1763	rBV6	821	682	0.04%	0.004%
36	7.031	1766	1770	1771	rBV3	1246	801	0.04%	0.005%

Data Path : Z:\voasrv\HPCHEM1\MSVOA\_U\Data\VU021122\  
 Data File : VU047111.D  
 Acq On : 11 Feb 2022 13:45  
 Operator : SY/MD  
 Sample : N1462-06  
 Misc : 5.0mL/MSVOA\_U/WATER  
 ALS Vial : 11 Sample Multiplier: 1

Instrument :  
 MSVOA\_U  
 ClientSampleId :  
 F4M39

Integration Parameters: LSCINT.P

Integrator: RTE  
 Smoothing : OFF  
 Sampling : 1  
 Start Thrs : 0.2  
 Stop Thrs : 0

Filtering: 5  
 Min Area: 0 % of largest Peak  
 Max Peaks: 100  
 Peak Location: TOP

If leading or trailing edge < 100 prefer < Baseline drop else tangent >  
 Peak separation: 5

Method : Z:\voasrv\HPCHEM1\MSVOA\_U\Method\SFAMULM021022WMA.M  
 Title : VOC Analysis

37	7.086	1783	1787	1790	rBV5	1287	975	0.05%	0.006%
38	7.192	1805	1820	1825	rBV10	3514	6749	0.35%	0.042%
39	7.337	1860	1865	1867	rBV6	1335	1080	0.06%	0.007%
40	7.449	1896	1900	1904	rVB6	992	1031	0.05%	0.006%
41	7.491	1910	1913	1918	rVB4	1015	899	0.05%	0.006%
42	7.517	1918	1921	1923	rBV4	933	784	0.04%	0.005%
43	7.568	1924	1937	1956	rBV	293754	512226	26.36%	3.211%
44	7.748	1991	1993	1995	rBV3	1091	677	0.03%	0.004%
45	7.899	2026	2040	2058	rBV	888939	1629455	83.85%	10.215%
46	8.179	2115	2127	2148	rBV	203170	348975	17.96%	2.188%
47	8.410	2195	2199	2203	rBV7	1130	947	0.05%	0.006%
48	8.475	2209	2219	2227	rBV2	7907	14591	0.75%	0.091%
49	8.555	2232	2244	2256	rBV	66652	117105	6.03%	0.734%
50	8.632	2257	2268	2282	rBV	765404	1315372	67.69%	8.246%
51	8.944	2361	2365	2368	rBV6	1159	891	0.05%	0.006%
52	9.031	2388	2392	2396	rBV6	1010	1035	0.05%	0.006%
53	9.131	2418	2423	2428	rBV8	1131	837	0.04%	0.005%
54	9.169	2428	2435	2439	rBV9	1141	1543	0.08%	0.010%
55	9.324	2478	2483	2487	rBV8	907	871	0.04%	0.005%
56	9.356	2489	2493	2495	rBV5	1138	845	0.04%	0.005%
57	9.420	2495	2513	2535	rBV	736392	1307305	67.27%	8.196%
58	9.693	2590	2598	2611	rBV5	6612	11722	0.60%	0.073%
59	9.992	2687	2691	2693	rBV4	944	780	0.04%	0.005%
60	10.118	2719	2730	2737	rBV10	4212	8731	0.45%	0.055%
61	10.279	2776	2780	2783	rVB5	1020	716	0.04%	0.004%
62	10.436	2824	2829	2833	rBV6	862	1074	0.06%	0.007%
63	10.488	2837	2845	2854	rVV4	3462	6696	0.34%	0.042%
64	10.523	2854	2856	2864	rVB6	1700	2195	0.11%	0.014%
65	10.632	2884	2890	2892	rVV4	822	831	0.04%	0.005%
66	10.674	2896	2903	2913	rVB4	5373	9190	0.47%	0.058%
67	10.758	2913	2929	2949	rBV	637985	1053777	54.22%	6.606%
68	10.893	2958	2971	2982	rBV2	11743	21377	1.10%	0.134%
69	10.979	2991	2998	3000	rBV8	911	1031	0.05%	0.006%
70	11.095	3028	3034	3036	rBV5	1410	1642	0.08%	0.010%
71	11.288	3090	3094	3100	rBV7	941	1327	0.07%	0.008%
72	11.462	3141	3148	3160	rVB9	5744	10508	0.54%	0.066%
73	11.632	3197	3201	3208	rVB8	1583	1697	0.09%	0.011%
74	11.697	3212	3221	3227	rBV10	3246	5951	0.31%	0.037%
75	11.745	3232	3236	3239	rVV6	1502	1186	0.06%	0.007%
76	11.812	3243	3257	3280	rBV	840377	1338752	68.89%	8.393%

Data Path : Z:\voasrv\HPCHEM1\MSVOA\_U\Data\VU021122\  
 Data File : VU047111.D  
 Acq On : 11 Feb 2022 13:45  
 Operator : SY/MD  
 Sample : N1462-06  
 Misc : 5.0mL/MSVOA\_U/WATER  
 ALS Vial : 11 Sample Multiplier: 1

Instrument :  
 MSVOA\_U  
 ClientSampleId :  
 F4M39

Integration Parameters: LSCINT.P

Integrator: RTE  
 Smoothing : OFF Filtering: 5  
 Sampling : 1 Min Area: 0 % of largest Peak  
 Start Thrs: 0.2 Max Peaks: 100  
 Stop Thrs : 0 Peak Location: TOP

If leading or trailing edge < 100 prefer < Baseline drop else tangent >  
 Peak separation: 5

Method : Z:\voasrv\HPCHEM1\MSVOA\_U\Method\SFAMULM021022WMA.M  
 Title : VOC Analysis

77	11.973	3303	3307	3316	rVB6	4144	5386	0.28%	0.034%
78	12.066	3328	3336	3343	rBV7	3464	5969	0.31%	0.037%
79	12.195	3362	3376	3395	rVV	920950	1496761	77.02%	9.383%
80	12.330	3415	3418	3426	rVB8	1875	2022	0.10%	0.013%
81	12.401	3434	3440	3445	rVB9	936	1015	0.05%	0.006%
82	12.545	3481	3485	3487	rBV6	1298	862	0.04%	0.005%
83	12.770	3549	3555	3564	rVB5	3416	5609	0.29%	0.035%
84	12.857	3578	3582	3586	rBV7	895	874	0.04%	0.005%
85	13.143	3669	3671	3678	rVB8	1279	1336	0.07%	0.008%
86	13.221	3686	3695	3705	rBV3	9289	15027	0.77%	0.094%
87	13.275	3708	3712	3717	rBV6	959	731	0.04%	0.005%
88	13.561	3798	3801	3805	rBV5	870	818	0.04%	0.005%
89	13.610	3814	3816	3822	rBV6	796	664	0.03%	0.004%
90	13.793	3869	3873	3878	rBV6	1442	1755	0.09%	0.011%
91	13.844	3881	3889	3898	rVB4	7088	11498	0.59%	0.072%
92	14.089	3958	3965	3966	rBV6	2298	1836	0.09%	0.012%
93	14.262	4016	4019	4020	rBV3	1069	659	0.03%	0.004%
94	14.330	4030	4040	4054	rBV2	21232	35238	1.81%	0.221%
95	14.413	4062	4066	4068	rBV3	811	665	0.03%	0.004%
96	14.452	4076	4078	4081	rBV2	1031	720	0.04%	0.005%
97	14.471	4081	4084	4087	rVV5	922	765	0.04%	0.005%
98	14.529	4099	4102	4106	rVV5	1052	736	0.04%	0.005%
99	14.786	4178	4182	4186	rBV7	1165	1312	0.07%	0.008%
100	15.169	4298	4301	4306	rVB6	991	715	0.04%	0.004%

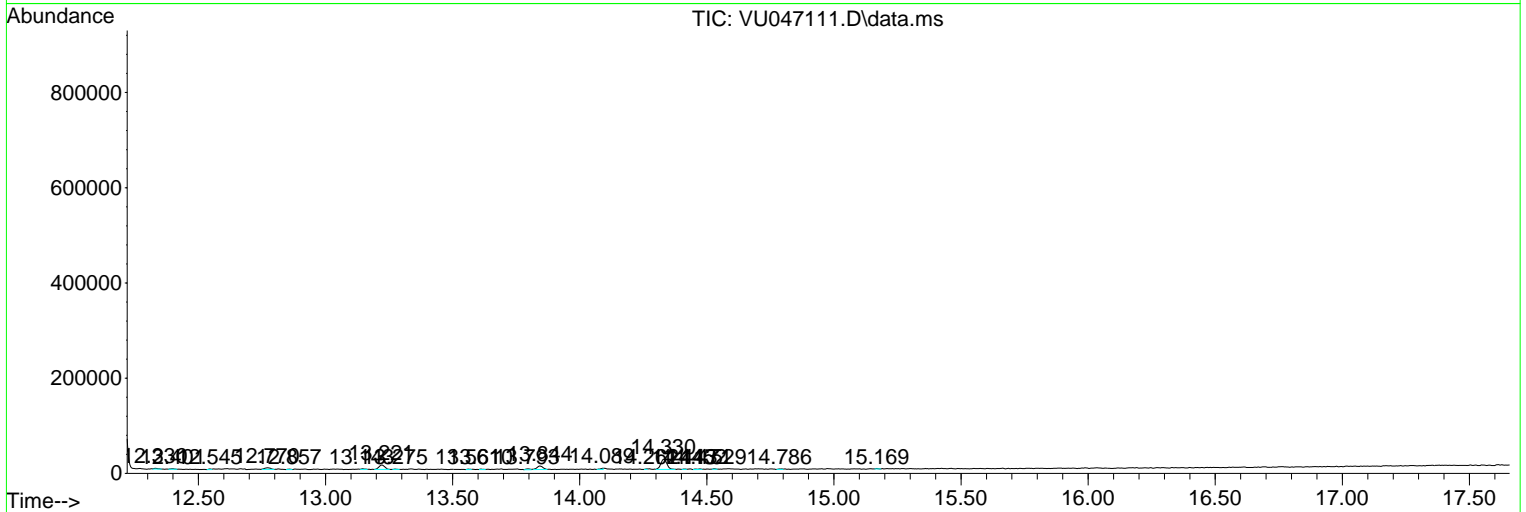
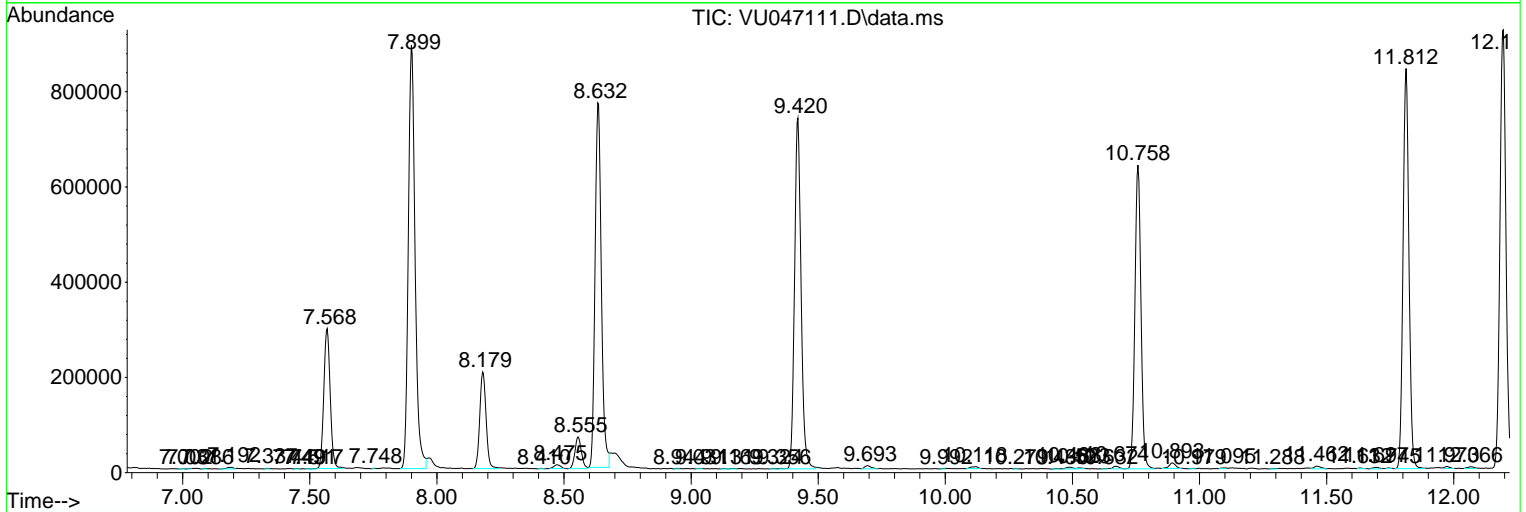
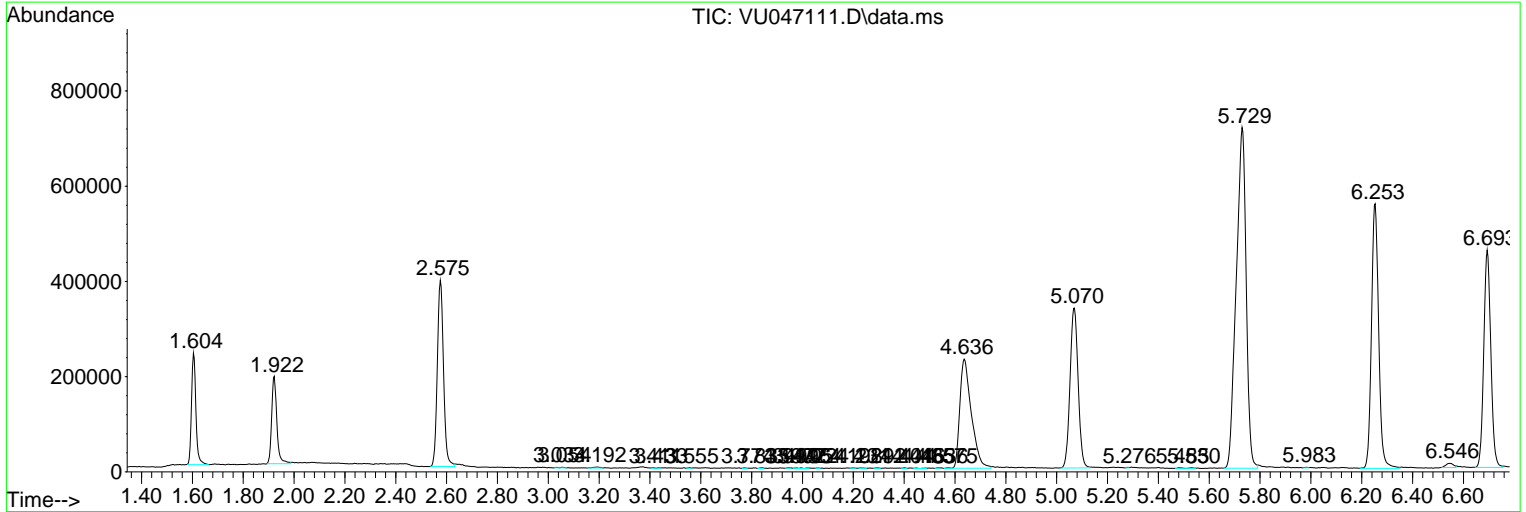
Sum of corrected areas: 15951325

Data Path : Z:\voasrv\HPCHEM1\MSVOA\_U\Data\VU021122\  
 Data File : VU047111.D  
 Acq On : 11 Feb 2022 13:45  
 Operator : SY/MD  
 Sample : N1462-06  
 Misc : 5.0mL/MSVOA\_U/WATER  
 ALS Vial : 11 Sample Multiplier: 1

Instrument :  
 MSVOA\_U  
 ClientSampleId :  
 F4M39

Quant Method : Z:\voasrv\HPCHEM1\MSVOA\_U\Method\SFAMULM021022WMA.M  
 Quant Title : VOC Analysis

TIC Library : C:\Database\NIST20.L  
 TIC Integration Parameters: LSCINT.P



Library Search Compound Report

Data Path : Z:\voasrv\HPCHEM1\MSVOA\_U\Data\VU021122\  
Data File : VU047111.D  
Acq On : 11 Feb 2022 13:45  
Operator : SY/MD  
Sample : N1462-06  
Misc : 5.0mL/MSVOA\_U/WATER  
ALS Vial : 11 Sample Multiplier: 1

Instrument :  
MSVOA\_U  
ClientSampleId :  
F4M39

Quant Method : Z:\voasrv\HPCHEM1\MSVOA\_U\Method\SFAMULM021022WMA.M  
Quant Title : VOC Analysis

TIC Library : C:\Database\NIST20.L  
TIC Integration Parameters: LSCINT.P

No Library Search Compounds Detected

\*\*\*\*\*

Data Path : Z:\voasrv\HPCHEM1\MSVOA\_U\Data\VU021122\  
Data File : VU047111.D  
Acq On : 11 Feb 2022 13:45  
Operator : SY/MD  
Sample : N1462-06  
Misc : 5.0mL/MSVOA\_U/WATER  
ALS Vial : 11 Sample Multiplier: 1

Instrument :  
MSVOA\_U  
ClientSampleId :  
F4M39

Quant Method : Z:\voasrv\HPCHEM1\MSVOA\_U\Method\SFAMULM021022WMA.M  
Quant Title : VOC Analysis

TIC Library : C:\Database\NIST0.L  
TIC Integration Parameters: LSCINT.P

TIC Top Hit name	RT	EstConc	Units	Response	--Internal Standard--		
					#	RT	Resp Conc

---