

Data Path : Z:\voasrv\HPCHEM1\MSVOA_U\Data\VU021823\
 Data File : VU053131.D
 Acq On : 18 Feb 2023 14:00
 Operator : JC/MD
 Sample : 01612-04
 Misc : 25.0mL/MSVOA_U/WATER
 ALS Vial : 8 Sample Multiplier: 1

Instrument :
 MSVOA_U
 ClientSampleId :
 COM86

Quant Time: Feb 19 23:27:55 2023
 Quant Method : Z:\voasrv\HPCHEM1\MSVOA_U\Method\SFAMUTR021023WMA.M
 Quant Title : TRACE VOA SFAM1.0
 QLast Update : Sun Feb 19 23:26:18 2023
 Response via : Initial Calibration

Compound	R.T.	QIon	Response	Conc	Units	Dev(Min)

Internal Standards						
1) 1,4-Difluorobenzene	6.244	114	153117	5.000	ug/L	0.00
28) Chlorobenzene-d5	9.415	117	134778	5.000	ug/L	0.00
58) 1,4-Dichlorobenzene-d4	11.807	152	62983	5.000	ug/L	0.00
System Monitoring Compounds						
4) Vinyl Chloride-d3	1.598	65	27594	3.762	ug/L	0.00
Spiked Amount	5.000	Range 40 - 130	Recovery	=	75.200%	
7) Chloroethane-d5	1.913	69	31604	4.584	ug/L	0.00
Spiked Amount	5.000	Range 65 - 130	Recovery	=	91.600%	
11) 1,1-Dichloroethene-d2	2.566	65	13975	4.154	ug/L	0.00
Spiked Amount	5.000	Range 60 - 125	Recovery	=	83.000%	
20) 2-Butanone-d5	4.637	46	131202	58.402	ug/L	-0.01
Spiked Amount	50.000	Range 40 - 130	Recovery	=	116.800%	
24) Chloroform-d	5.058	84	80733	4.783	ug/L	0.00
Spiked Amount	5.000	Range 70 - 125	Recovery	=	95.600%	
26) 1,2-Dichloroethane-d4	5.698	65	41828	4.918	ug/L	0.00
Spiked Amount	5.000	Range 70 - 130	Recovery	=	98.400%	
32) Benzene-d6	5.723	84	148889	4.916	ug/L	0.00
Spiked Amount	5.000	Range 70 - 125	Recovery	=	98.400%	
36) 1,2-Dichloropropane-d6	6.688	67	53389	5.061	ug/L	0.00
Spiked Amount	5.000	Range 60 - 140	Recovery	=	101.200%	
41) Toluene-d8	7.894	98	129775	4.743	ug/L	0.00
Spiked Amount	5.000	Range 70 - 130	Recovery	=	94.800%	
43) trans-1,3-Dichloroprop...	8.177	79	19475	4.560	ug/L	0.00
Spiked Amount	5.000	Range 55 - 130	Recovery	=	91.200%	
46) 2-Hexanone-d5	8.630	63	102797	54.220	ug/L	0.00
Spiked Amount	50.000	Range 45 - 130	Recovery	=	108.440%	
56) 1,1,2,2-Tetrachloroeth...	10.752	84	46114	5.090	ug/L	0.00
Spiked Amount	5.000	Range 65 - 120	Recovery	=	101.800%	
66) 1,2-Dichlorobenzene-d4	12.189	152	50113	5.326	ug/L	0.00
Spiked Amount	5.000	Range 80 - 120	Recovery	=	106.600%	

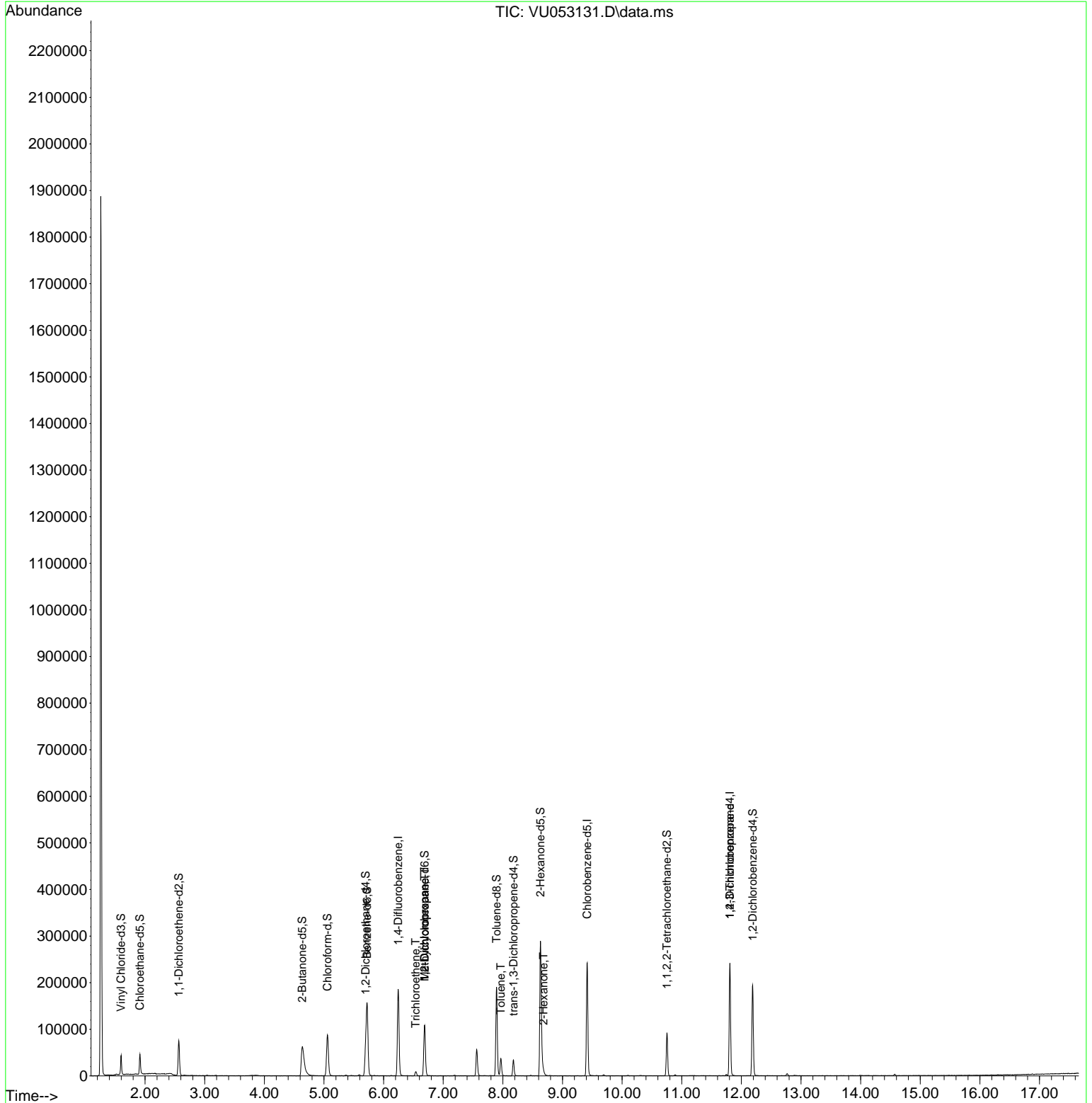
Target Compounds						Qvalue
34) Trichloroethene	6.537	95	3297	0.302	ug/L	92
35) Methylcyclohexane	6.688	83	12555	0.710	ug/L #	21
37) 1,2-Dichloropropane	6.688	63	5934	0.561	ug/L #	90
42) Toluene	7.964	91	28815	0.683	ug/L	93
48) 2-Hexanone	8.681	43	5830	1.439	ug/L #	44
61) 1,2,3-Trichloropropane	11.807	75	8581	1.419	ug/L #	68

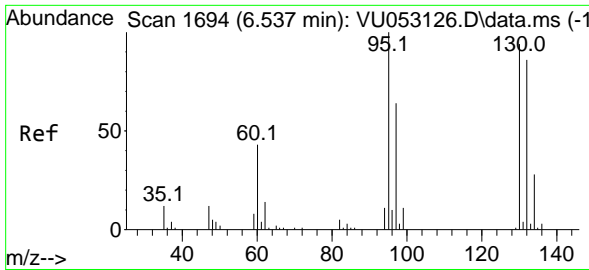
(#) = qualifier out of range (m) = manual integration (+) = signals summed

Data Path : Z:\voasrv\HPCHEM1\MSVOA_U\Data\VU021823\
 Data File : VU053131.D
 Acq On : 18 Feb 2023 14:00
 Operator : JC/MD
 Sample : 01612-04
 Misc : 25.0mL/MSVOA_U/WATER
 ALS Vial : 8 Sample Multiplier: 1

Instrument :
 MSVOA_U
 ClientSampleId :
 COM86

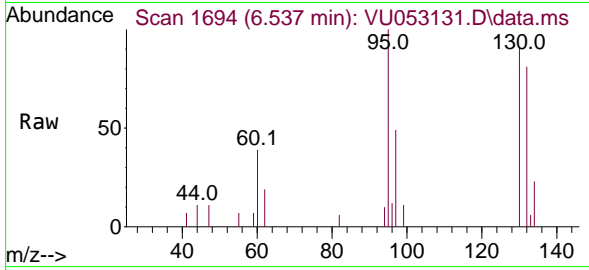
Quant Time: Feb 19 23:27:55 2023
 Quant Method : Z:\voasrv\HPCHEM1\MSVOA_U\Method\SFAMUTR021023WMA.M
 Quant Title : TRACE VOA SFAM1.0
 QLast Update : Sun Feb 19 23:26:18 2023
 Response via : Initial Calibration





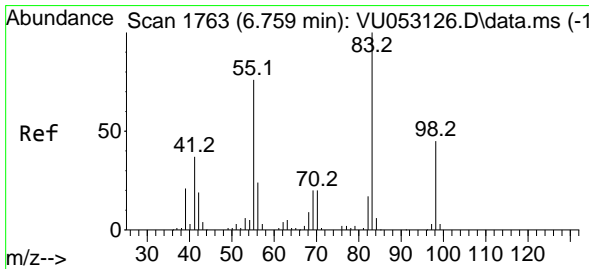
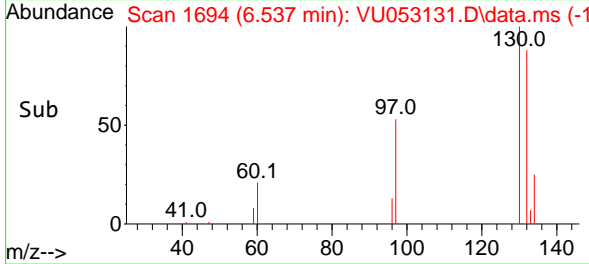
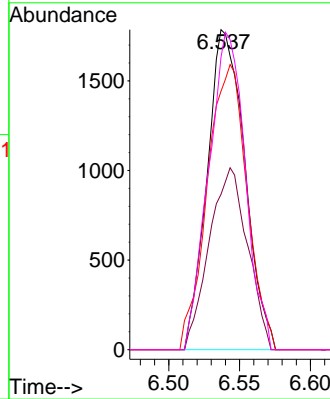
#34
 Trichloroethene
 Concen: 0.302 ug/L
 RT: 6.537 min Scan# 1
 Delta R.T. -0.000 min
 Lab File: VU053131.D
 Acq: 18 Feb 2023 14:00

Instrument :
 MSVOA_U
 ClientSampleId :
 COM86



Tgt Ion: 95 Resp: 3297

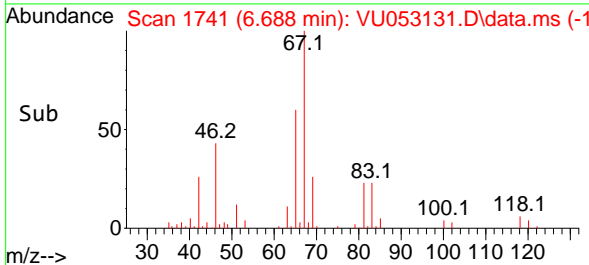
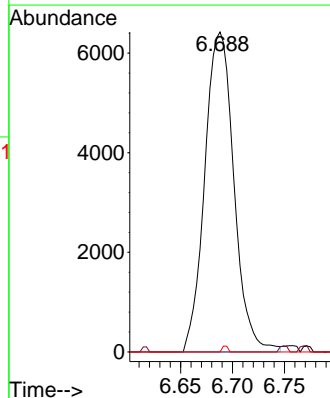
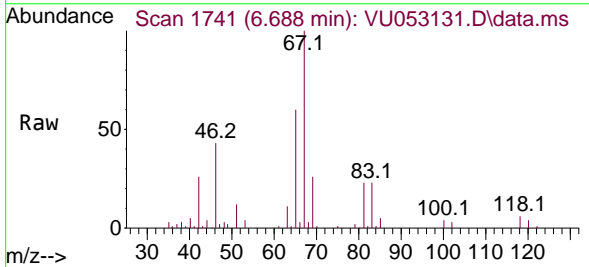
Ion	Ratio	Lower	Upper
95	100		
97	48.5	44.7	82.9
132	80.7	62.3	115.7
130	91.4	64.0	118.8

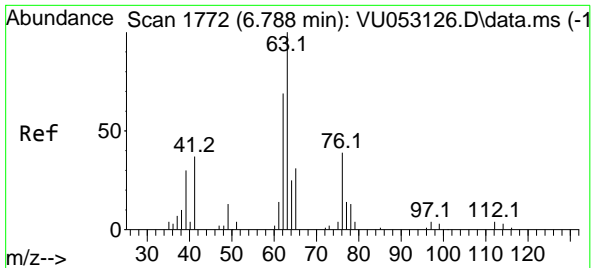


#35
 Methylcyclohexane
 Concen: 0.710 ug/L
 RT: 6.688 min Scan# 1741
 Delta R.T. -0.071 min
 Lab File: VU053131.D
 Acq: 18 Feb 2023 14:00

Tgt Ion: 83 Resp: 12555

Ion	Ratio	Lower	Upper
83	100		
55	0.5	57.9	86.9#
98	0.4	36.4	54.6#

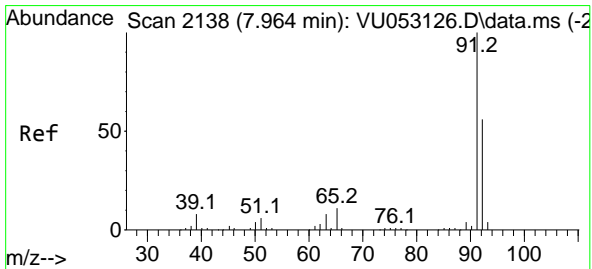
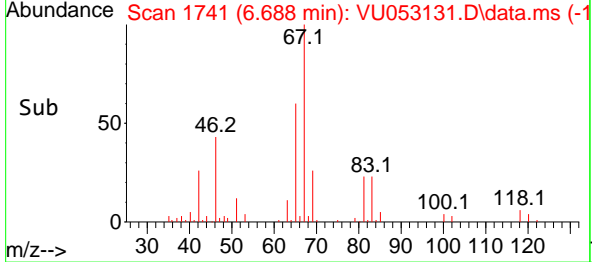
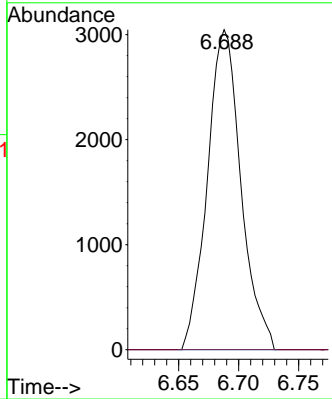
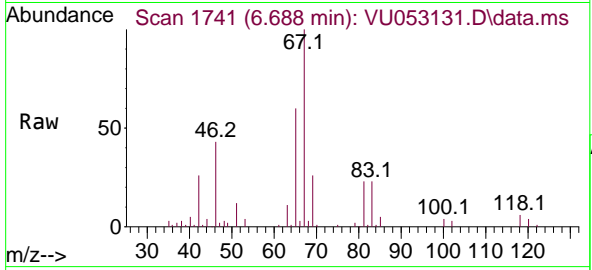




#37
 1,2-Dichloropropane
 Concen: 0.561 ug/L
 RT: 6.688 min Scan# 1741
 Delta R.T. -0.100 min
 Lab File: VU053131.D
 Acq: 18 Feb 2023 14:00

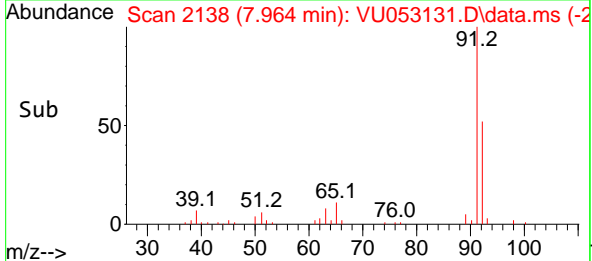
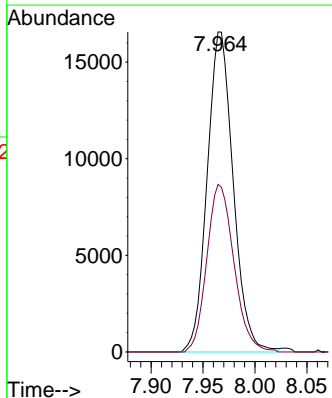
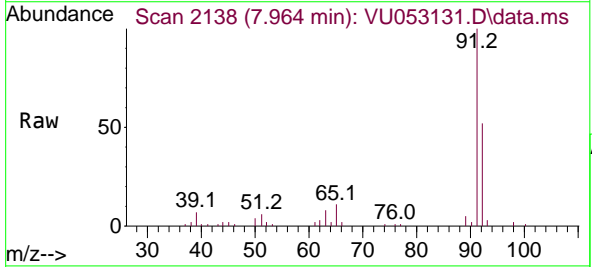
Instrument : MSVOA_U
 ClientSampleId : COM86

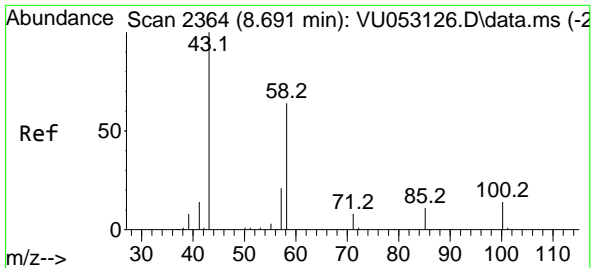
Tgt Ion: 63 Resp: 5934
 Ion Ratio Lower Upper
 63 100
 112 0.0 2.7 4.1#



#42
 Toluene
 Concen: 0.683 ug/L
 RT: 7.964 min Scan# 2138
 Delta R.T. -0.000 min
 Lab File: VU053131.D
 Acq: 18 Feb 2023 14:00

Tgt Ion: 91 Resp: 28815
 Ion Ratio Lower Upper
 91 100
 92 52.4 40.5 75.3



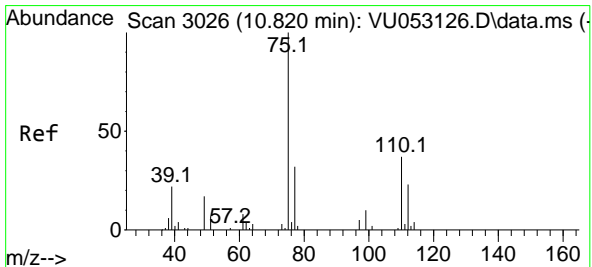
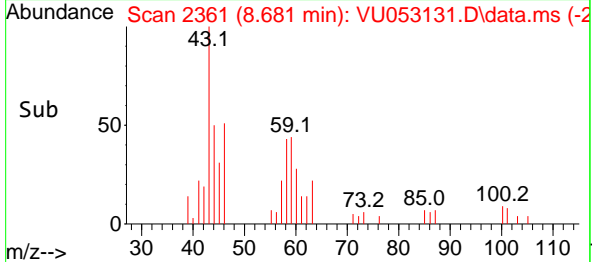
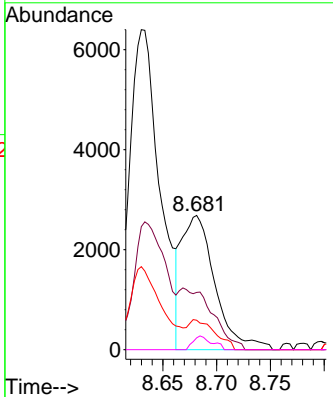
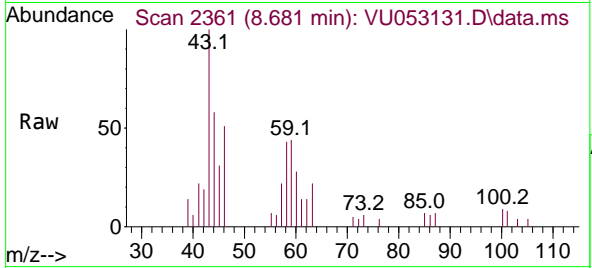


#48
 2-Hexanone
 Concen: 1.439 ug/L
 RT: 8.681 min Scan# 21
 Delta R.T. -0.010 min
 Lab File: VU053131.D
 Acq: 18 Feb 2023 14:00

Instrument :
 MSVOA_U
 ClientSampleId :
 COM86

Tgt Ion: 43 Resp: 5830

Ion	Ratio	Lower	Upper
43	100		
58	0.0	50.3	75.5#
57	18.4	17.4	26.0
100	5.6	10.2	15.2#



#61
 1,2,3-Trichloropropane
 Concen: 1.419 ug/L
 RT: 11.807 min Scan# 3333
 Delta R.T. 0.987 min
 Lab File: VU053131.D
 Acq: 18 Feb 2023 14:00

Tgt Ion: 75 Resp: 8581

Ion	Ratio	Lower	Upper
75	100		
110	1.0	28.6	42.8#
77	32.2	27.6	41.4

