

Data Path : Z:\voasrv\HPCHEM1\MSVOA\_U\Data\VU061622\  
 Data File : VU049204.D  
 Acq On : 16 Jun 2022 13:54  
 Operator : SY/MD  
 Sample : N3288-03DL 10X  
 Misc : 25.0mL/MSVOA\_U/WATER  
 ALS Vial : 13 Sample Multiplier: 1

Instrument :  
 MSVOA\_U  
 ClientSampleId :

Quant Time: Jun 17 01:27:19 2022  
 Quant Method : Z:\voasrv\HPCHEM1\MSVOA\_U\Method\SFAMUTR061422WMA.M  
 Quant Title : TRACE VOA SFAM1.0  
 QLast Update : Fri Jun 17 01:23:56 2022  
 Response via : Initial Calibration

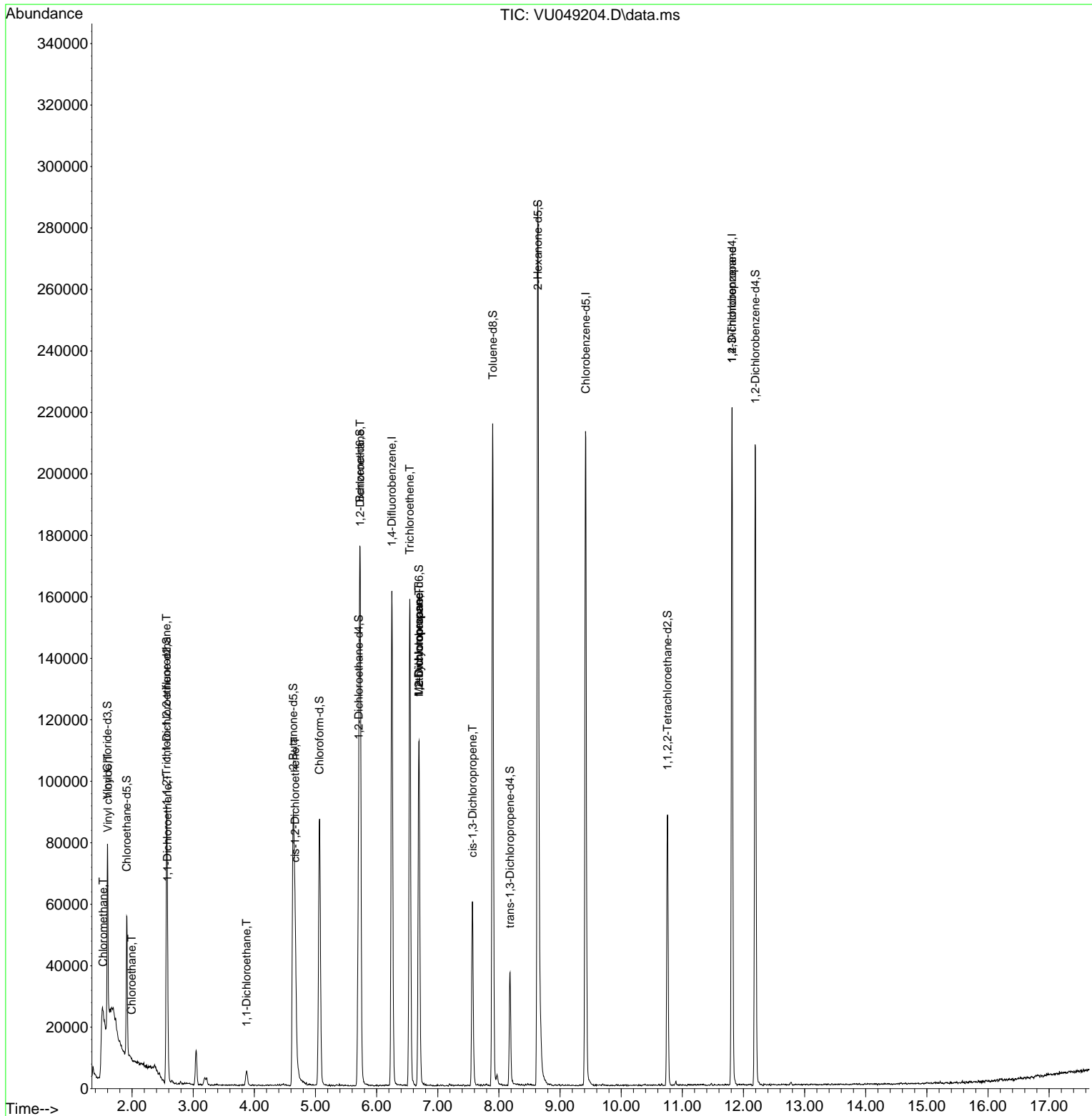
Compound	R.T.	QIon	Response	Conc	Units	Dev(Min)
Internal Standards						
1) 1,4-Difluorobenzene	6.250	114	125793	5.000	ug/L	0.00
28) Chlorobenzene-d5	9.420	117	115624	5.000	ug/L	0.00
58) 1,4-Dichlorobenzene-d4	11.812	152	56564	5.000	ug/L	0.00
System Monitoring Compounds						
4) Vinyl Chloride-d3	1.597	65	39726	3.614	ug/L	0.00
Spiked Amount	5.000	Range 40 - 130	Recovery	=	72.200%	
7) Chloroethane-d5	1.912	69	32016	4.302	ug/L	0.00
Spiked Amount	5.000	Range 65 - 130	Recovery	=	86.000%	
11) 1,1-Dichloroethene-d2	2.568	65	16716	3.781	ug/L	0.00
Spiked Amount	5.000	Range 60 - 125	Recovery	=	75.600%	
20) 2-Butanone-d5	4.636	46	150722	51.356	ug/L	0.00
Spiked Amount	50.000	Range 40 - 130	Recovery	=	102.720%	
24) Chloroform-d	5.067	84	80229	4.652	ug/L	0.00
Spiked Amount	5.000	Range 70 - 125	Recovery	=	93.000%	
26) 1,2-Dichloroethane-d4	5.706	65	45340	4.793	ug/L	0.00
Spiked Amount	5.000	Range 70 - 130	Recovery	=	95.800%	
32) Benzene-d6	5.729	84	157947	4.535	ug/L	0.00
Spiked Amount	5.000	Range 70 - 125	Recovery	=	90.600%	
36) 1,2-Dichloropropane-d6	6.693	67	56665	4.793	ug/L	0.00
Spiked Amount	5.000	Range 60 - 140	Recovery	=	95.800%	
41) Toluene-d8	7.899	98	138237	4.407	ug/L	0.00
Spiked Amount	5.000	Range 70 - 130	Recovery	=	88.200%	
43) trans-1,3-Dichloroprop...	8.182	79	20640	3.930	ug/L	0.00
Spiked Amount	5.000	Range 55 - 130	Recovery	=	78.600%	
46) 2-Hexanone-d5	8.636	63	102846	48.543	ug/L	0.00
Spiked Amount	50.000	Range 45 - 130	Recovery	=	97.080%	
56) 1,1,2,2-Tetrachloroeth...	10.758	84	45278	4.783	ug/L	0.00
Spiked Amount	5.000	Range 65 - 120	Recovery	=	95.600%	
66) 1,2-Dichlorobenzene-d4	12.195	152	52844	4.869	ug/L	0.00
Spiked Amount	5.000	Range 80 - 120	Recovery	=	97.400%	
Target Compounds						
3) Chloromethane	1.526	50	1514	0.128	ug/L #	81
5) Vinyl chloride	1.604	62	1538	0.145	ug/L #	1
8) Chloroethane	1.996	64	581	0.095	ug/L #	54
10) 1,1,2-Trichloro-1,2,2-...	2.562	101	371	0.051	ug/L #	21
12) 1,1-Dichloroethene	2.581	96	4333	0.613	ug/L #	1
19) 1,1-Dichloroethane	3.874	63	6149	0.398	ug/L	92
22) cis-1,2-Dichloroethene	4.668	96	12852	1.466	ug/L	98
27) 1,2-Dichloroethane	5.732	62	1009	0.099	ug/L #	74
34) Trichloroethene	6.542	95	54199	6.163	ug/L	98
35) Methylcyclohexane	6.693	83	12508	0.848	ug/L #	16
37) 1,2-Dichloropropane	6.690	63	5884	0.622	ug/L #	89
39) cis-1,3-Dichloropropene	7.568	75	1634	0.114	ug/L #	62
61) 1,2,3-Trichloropropane	11.812	75	7338	1.156	ug/L #	69

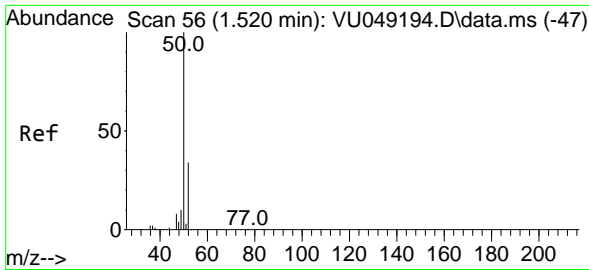
(#) = qualifier out of range (m) = manual integration (+) = signals summed

Data Path : Z:\voasrv\HPCHEM1\MSVOA\_U\Data\VU061622\  
 Data File : VU049204.D  
 Acq On : 16 Jun 2022 13:54  
 Operator : SY/MD  
 Sample : N3288-03DL 10X  
 Misc : 25.0mL/MSVOA\_U/WATER  
 ALS Vial : 13 Sample Multiplier: 1

Instrument :  
 MSVOA\_U  
 ClientSampleId :

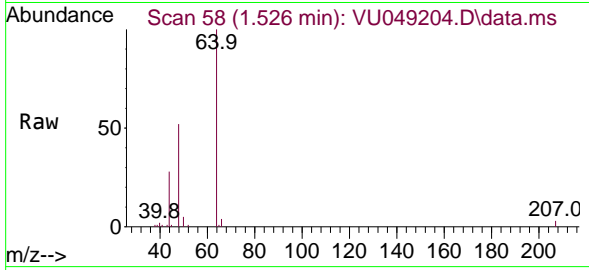
Quant Time: Jun 17 01:27:19 2022  
 Quant Method : Z:\voasrv\HPCHEM1\MSVOA\_U\Method\SFAMUTR061422WMA.M  
 Quant Title : TRACE VOA SFAM1.0  
 QLast Update : Fri Jun 17 01:23:56 2022  
 Response via : Initial Calibration



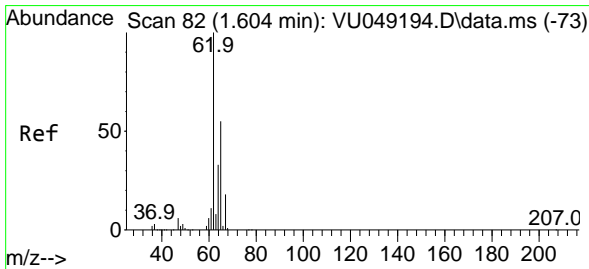
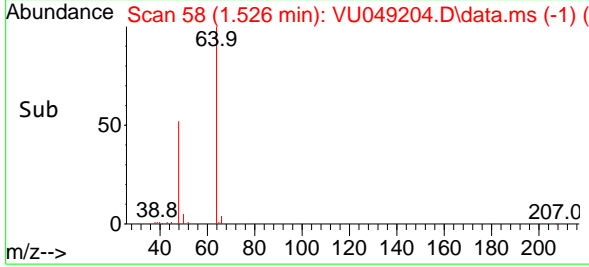
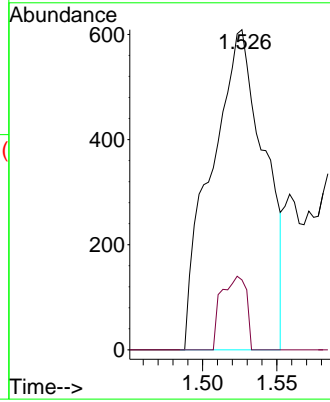


#3  
 Chloromethane  
 Concen: 0.128 ug/L  
 RT: 1.526 min Scan# 51  
 Delta R.T. 0.006 min  
 Lab File: VU049204.D  
 Acq: 16 Jun 2022 13:54

Instrument :  
 MSVOA\_U  
 ClientSampleId :

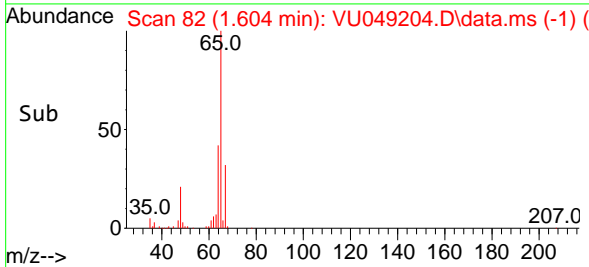
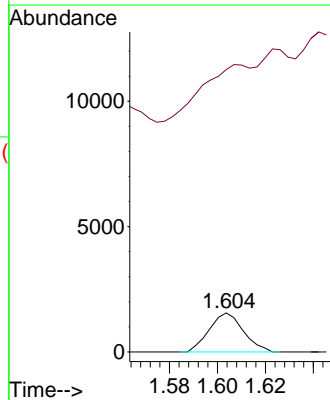
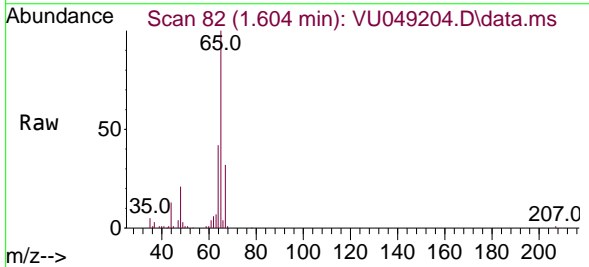


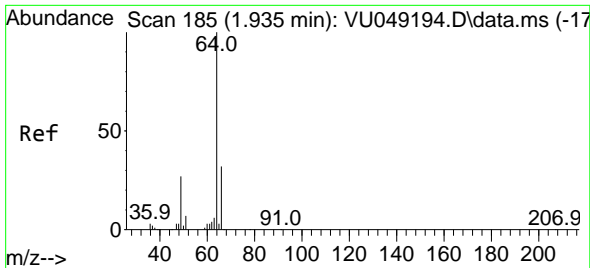
Tgt Ion: 50 Resp: 1514  
 Ion Ratio Lower Upper  
 50 100  
 52 21.8 22.7 42.1#



#5  
 Vinyl chloride  
 Concen: 0.145 ug/L  
 RT: 1.604 min Scan# 82  
 Delta R.T. -0.000 min  
 Lab File: VU049204.D  
 Acq: 16 Jun 2022 13:54

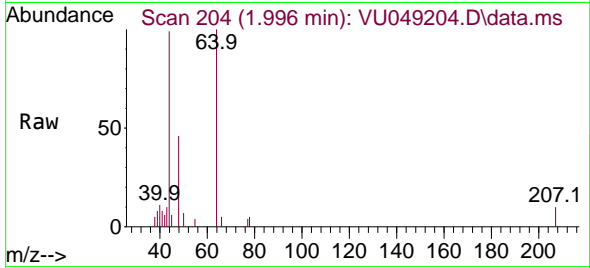
Tgt Ion: 62 Resp: 1538  
 Ion Ratio Lower Upper  
 62 100  
 64 723.4 22.8 42.4#



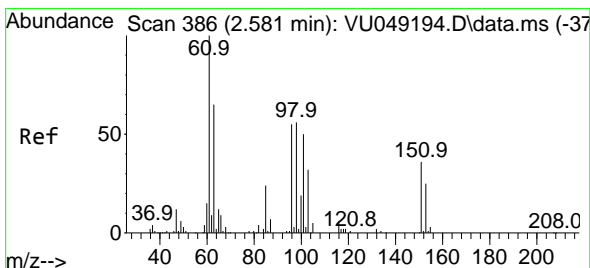
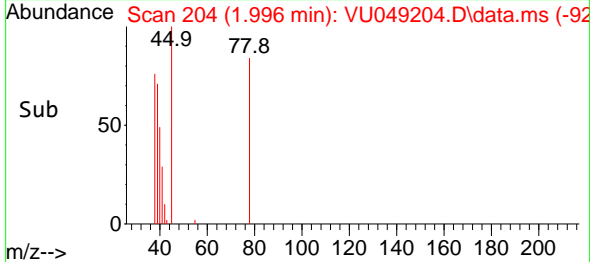
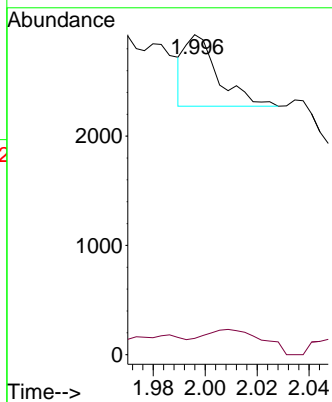


#8  
 Chloroethane  
 Concen: 0.095 ug/L  
 RT: 1.996 min Scan# 204  
 Delta R.T. 0.061 min  
 Lab File: VU049204.D  
 Acq: 16 Jun 2022 13:54

Instrument : MSVOA\_U  
 ClientSampleId :

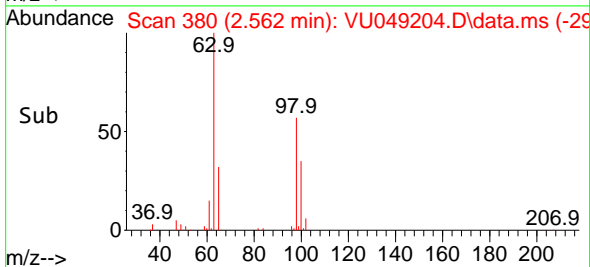
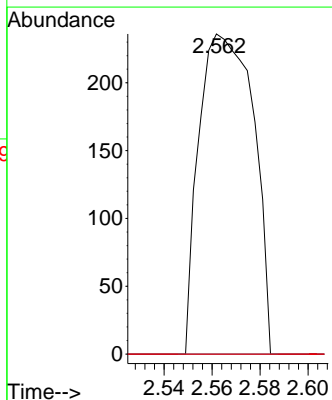
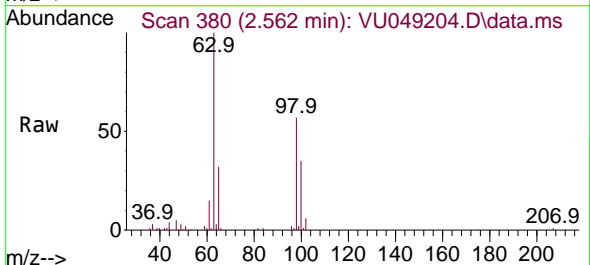


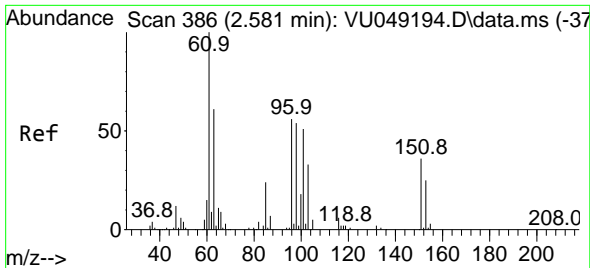
Tgt Ion: 64 Resp: 581  
 Ion Ratio Lower Upper  
 64 100  
 66 5.1 20.9 38.9#



#10  
 1,1,2-Trichloro-1,2,2-trifluoroethane  
 Concen: 0.051 ug/L  
 RT: 2.562 min Scan# 380  
 Delta R.T. -0.019 min  
 Lab File: VU049204.D  
 Acq: 16 Jun 2022 13:54

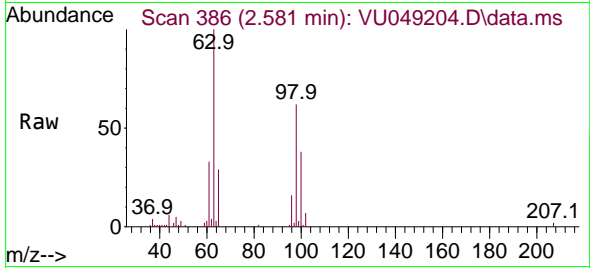
Tgt Ion: 101 Resp: 371  
 Ion Ratio Lower Upper  
 101 100  
 85 0.0 36.1 54.1#  
 151 0.0 56.8 85.2#



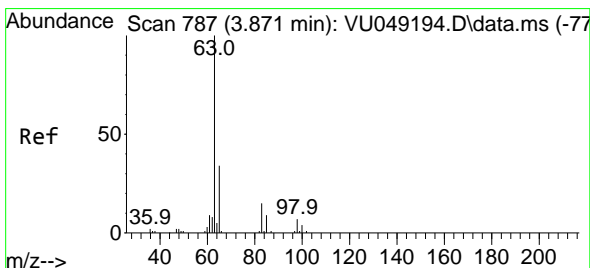
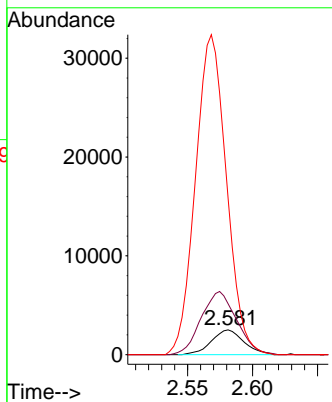
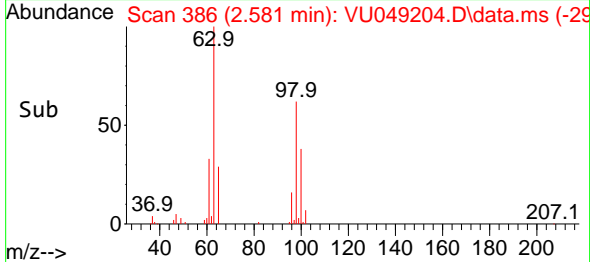


#12  
 1,1-Dichloroethene  
 Concen: 0.613 ug/L  
 RT: 2.581 min Scan# 386  
 Delta R.T. -0.000 min  
 Lab File: VU049204.D  
 Acq: 16 Jun 2022 13:54

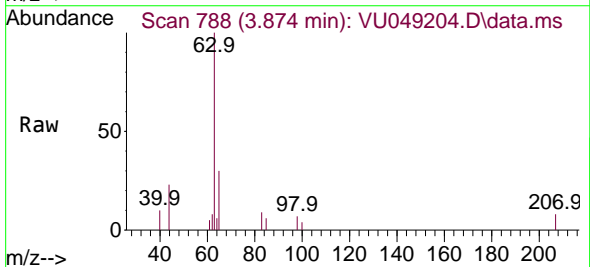
Instrument : MSVOA\_U  
 ClientSampleId :



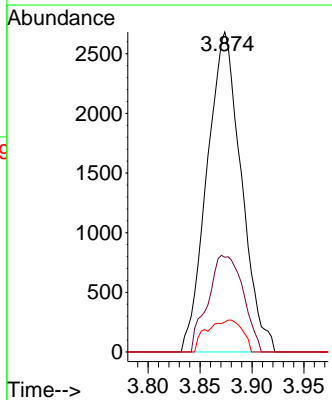
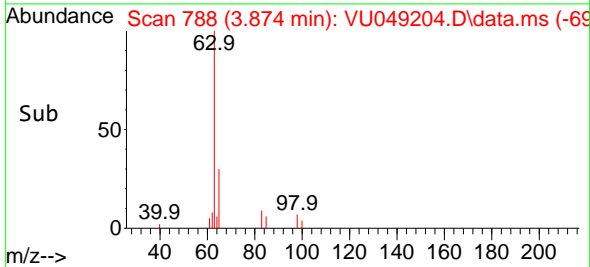
Tgt Ion: 96 Resp: 4333  
 Ion Ratio Lower Upper  
 96 100  
 61 205.1 127.2 236.2  
 63 630.5 94.7 175.9#

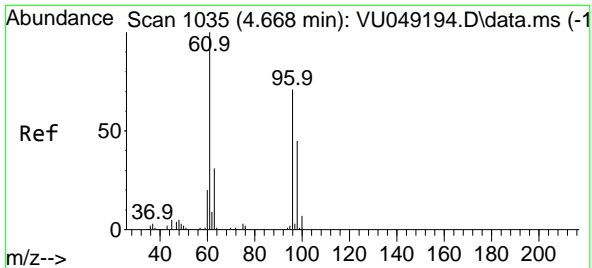


#19  
 1,1-Dichloroethane  
 Concen: 0.398 ug/L  
 RT: 3.874 min Scan# 788  
 Delta R.T. 0.003 min  
 Lab File: VU049204.D  
 Acq: 16 Jun 2022 13:54



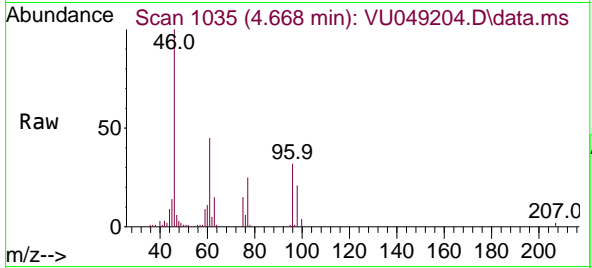
Tgt Ion: 63 Resp: 6149  
 Ion Ratio Lower Upper  
 63 100  
 65 29.6 24.0 44.6  
 83 9.4 9.1 16.9



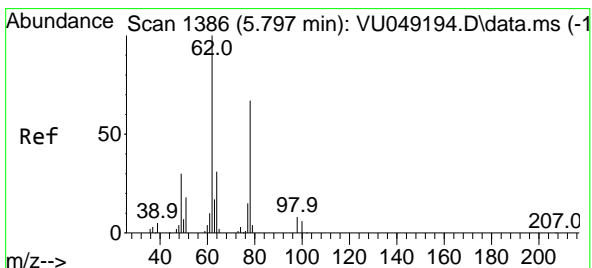
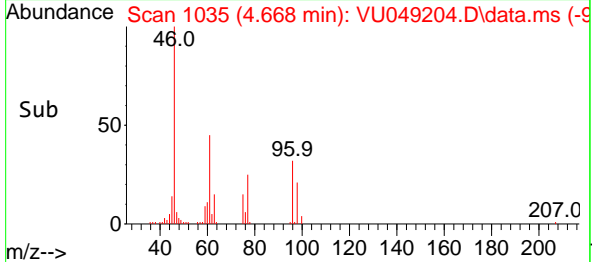
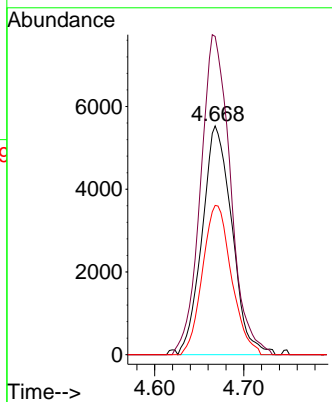


#22  
 cis-1,2-Dichloroethene  
 Concen: 1.466 ug/L  
 RT: 4.668 min Scan# 1035  
 Delta R.T. -0.000 min  
 Lab File: VU049204.D  
 Acq: 16 Jun 2022 13:54

Instrument : MSVOA\_U  
 ClientSampleId :

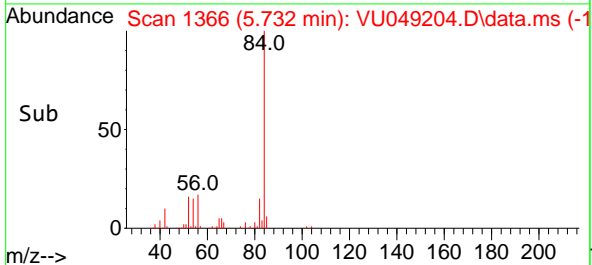
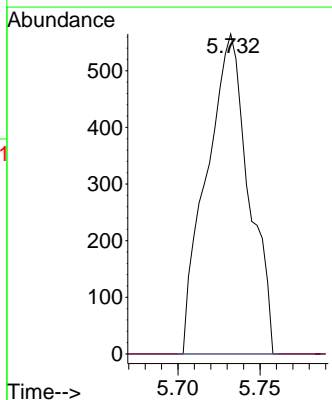
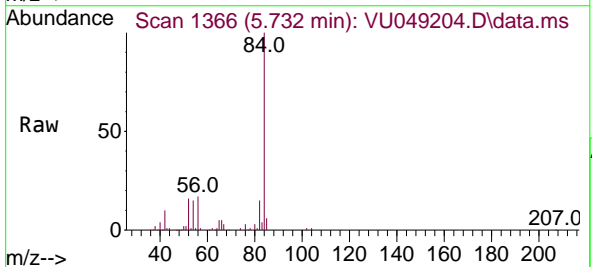


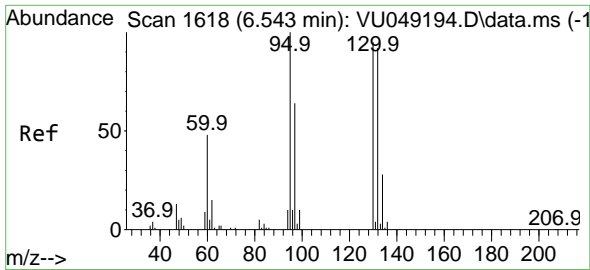
Tgt Ion	Resp	Lower	Upper
96	12852		
96	100		
61	139.2	99.5	184.9
98	65.3	44.8	83.2



#27  
 1,2-Dichloroethane  
 Concen: 0.099 ug/L  
 RT: 5.732 min Scan# 1366  
 Delta R.T. -0.065 min  
 Lab File: VU049204.D  
 Acq: 16 Jun 2022 13:54

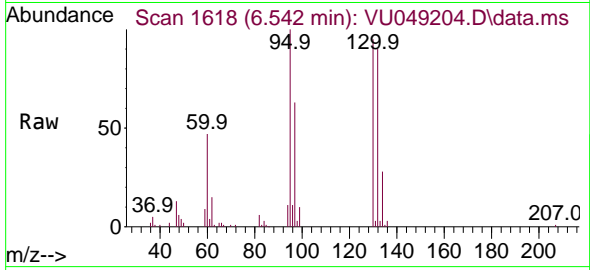
Tgt Ion	Resp	Lower	Upper
62	1009		
62	100		
98	0.0	7.6	11.4#



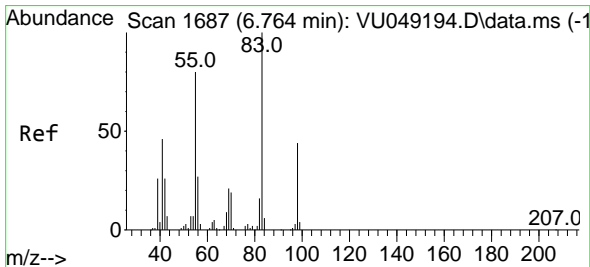
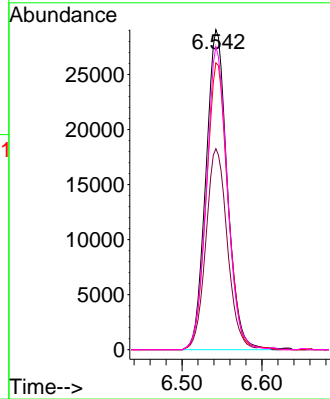
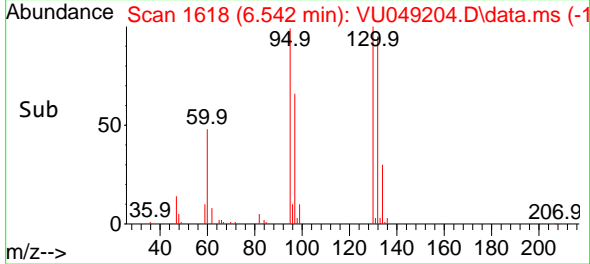


#34  
 Trichloroethene  
 Concen: 6.163 ug/L  
 RT: 6.542 min Scan# 1665  
 Delta R.T. -0.000 min  
 Lab File: VU049204.D  
 Acq: 16 Jun 2022 13:54

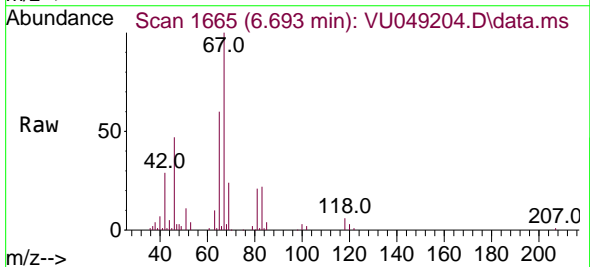
Instrument : MSVOA\_U  
 ClientSampleId :



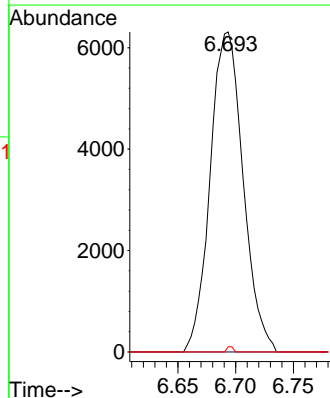
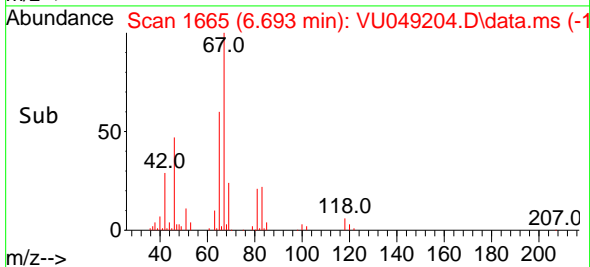
Tgt Ion: 95 Resp: 54199  
 Ion Ratio Lower Upper  
 95 100  
 97 62.8 45.3 84.1  
 132 89.7 61.5 114.3  
 130 94.7 65.6 121.8

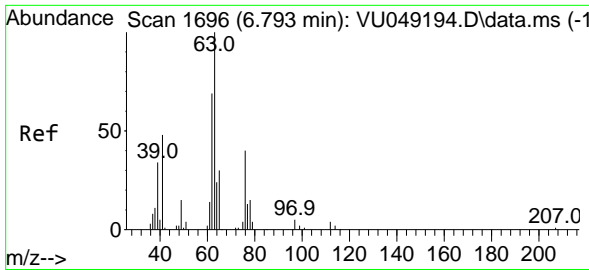


#35  
 Methylcyclohexane  
 Concen: 0.848 ug/L  
 RT: 6.693 min Scan# 1665  
 Delta R.T. -0.071 min  
 Lab File: VU049204.D  
 Acq: 16 Jun 2022 13:54



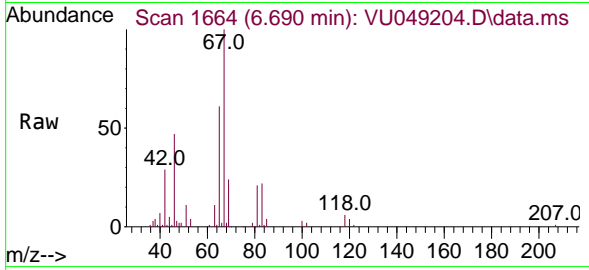
Tgt Ion: 83 Resp: 12508  
 Ion Ratio Lower Upper  
 83 100  
 55 0.0 66.9 100.3#  
 98 0.3 35.5 53.3#



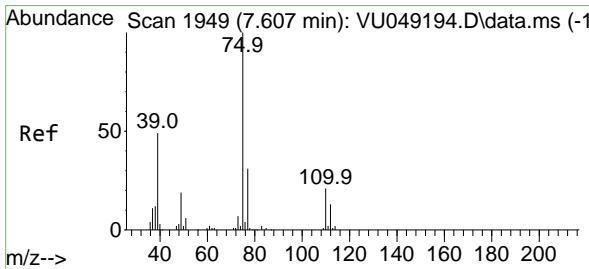
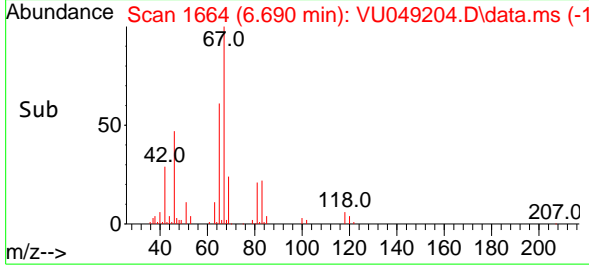
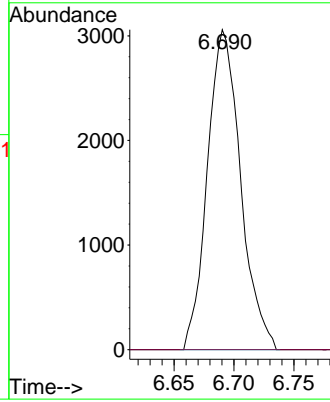


#37  
 1,2-Dichloropropane  
 Concen: 0.622 ug/L  
 RT: 6.690 min Scan# 1664  
 Delta R.T. -0.103 min  
 Lab File: VU049204.D  
 Acq: 16 Jun 2022 13:54

Instrument : MSVOA\_U  
 ClientSampleId :

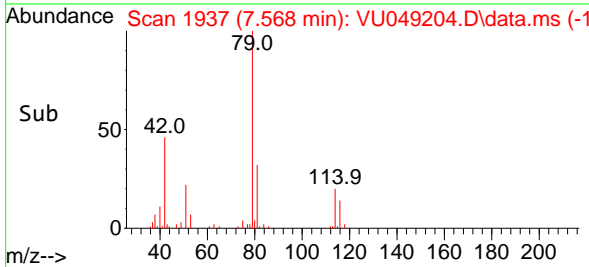
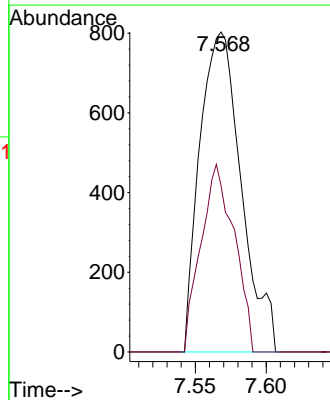
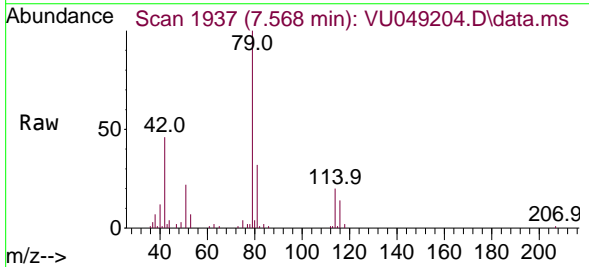


Tgt Ion: 63 Resp: 5884  
 Ion Ratio Lower Upper  
 63 100  
 112 0.0 2.8 4.2#

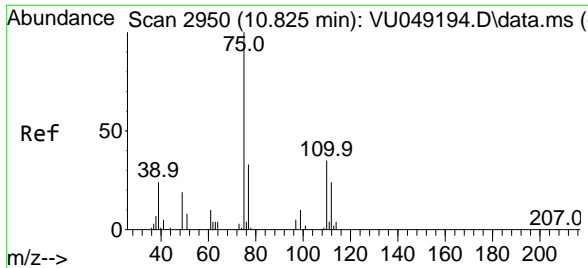


#39  
 cis-1,3-Dichloropropene  
 Concen: 0.114 ug/L  
 RT: 7.568 min Scan# 1937  
 Delta R.T. -0.039 min  
 Lab File: VU049204.D  
 Acq: 16 Jun 2022 13:54

Tgt Ion: 75 Resp: 1634  
 Ion Ratio Lower Upper  
 75 100  
 77 52.1 21.8 40.4#

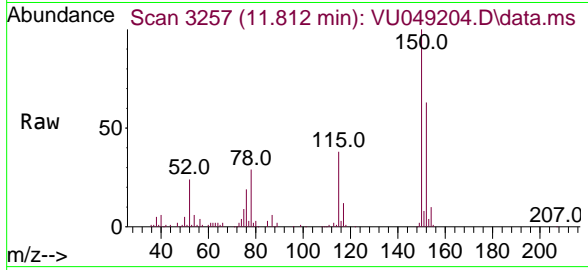






#61  
 1,2,3-Trichloropropane  
 Concen: 1.156 ug/L  
 RT: 11.812 min Scan# 31  
 Delta R.T. 0.987 min  
 Lab File: VU049204.D  
 Acq: 16 Jun 2022 13:54

Instrument :  
 MSVOA\_U  
 ClientSampleId :



Tgt Ion: 75 Resp: 7338

Ion	Ratio	Lower	Upper
75	100		
110	2.5	29.0	43.4#
77	33.4	26.2	39.2

