

Data Path : Z:\voasrv\HPCHEM1\MSVOA_U\Data\VU061622\
 Data File : VU049209.D
 Acq On : 16 Jun 2022 15:53
 Operator : SY/MD
 Sample : N3277-15 10000X
 Misc : 25.0mL/MSVOA_U/WATER
 ALS Vial : 18 Sample Multiplier: 1

Instrument :
 MSVOA_U
 ClientSampleId :
 COBB4

Integration Parameters: rteint.p

Integrator: RTE
 Smoothing : ON Filtering: 5
 Sampling : 1 Min Area: 3 % of largest Peak
 Start Thrs: 0.1 Max Peaks: 100
 Stop Thrs : 0 Peak Location: TOP

If leading or trailing edge < 100 prefer < Baseline drop else tangent >
 Peak separation: 5

Method : Z:\voasrv\HPCHEM1\MSVOA_U\Method\SFAMUTR061422WMA.M
 Title : TRACE VOA SFAM1.0

Signal : TIC: VU049209.D\data.ms

peak #	R.T. min	first scan	max scan	last scan	PK TY	peak height	corr. area	corr. % max.	% of total
1	1.597	74	80	93	rBV	50898	58007	1.50%	0.737%
2	1.912	171	178	195	rVB	45011	59550	1.54%	0.756%
3	2.568	370	382	403	rBV	80592	132726	3.43%	1.686%
4	4.636	1011	1025	1064	rBV	92724	293261	7.58%	3.725%
5	5.067	1140	1159	1176	rBV2	82056	182299	4.71%	2.316%
6	5.726	1344	1364	1389	rBV2	168663	441245	11.40%	5.605%
7	6.250	1510	1527	1543	rBV	155501	292640	7.56%	3.717%
8	6.542	1602	1618	1651	rBV	2072086	3868971	100.00%	49.144%
9	6.690	1652	1664	1680	rVB	109938	216945	5.61%	2.756%
10	7.568	1925	1937	1950	rBV	57641	101739	2.63%	1.292%
11	7.899	2023	2040	2054	rBV	203152	354344	9.16%	4.501%
12	8.179	2112	2127	2147	rBV	36613	63498	1.64%	0.807%
13	8.636	2257	2269	2305	rBV2	311338	632592	16.35%	8.035%
14	9.417	2500	2512	2533	rBV	209835	349755	9.04%	4.443%
15	10.758	2914	2929	2949	rBV	90656	147116	3.80%	1.869%
16	11.812	3246	3257	3277	rBV	218191	352535	9.11%	4.478%
17	12.195	3364	3376	3394	rBV	197503	325458	8.41%	4.134%

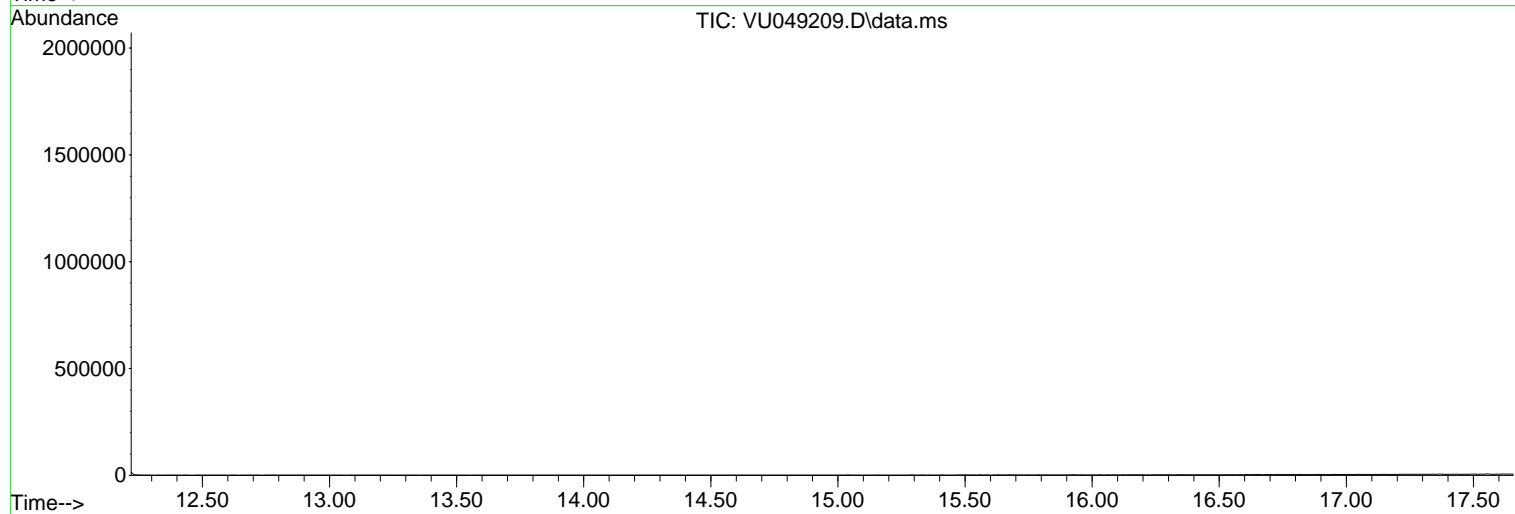
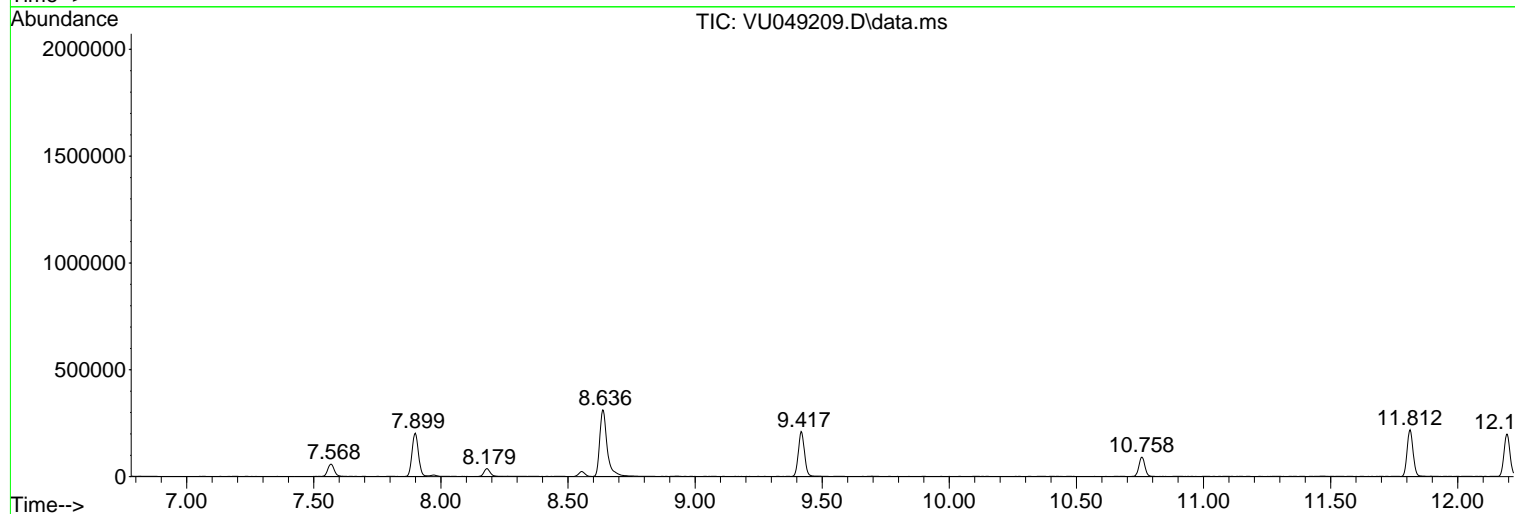
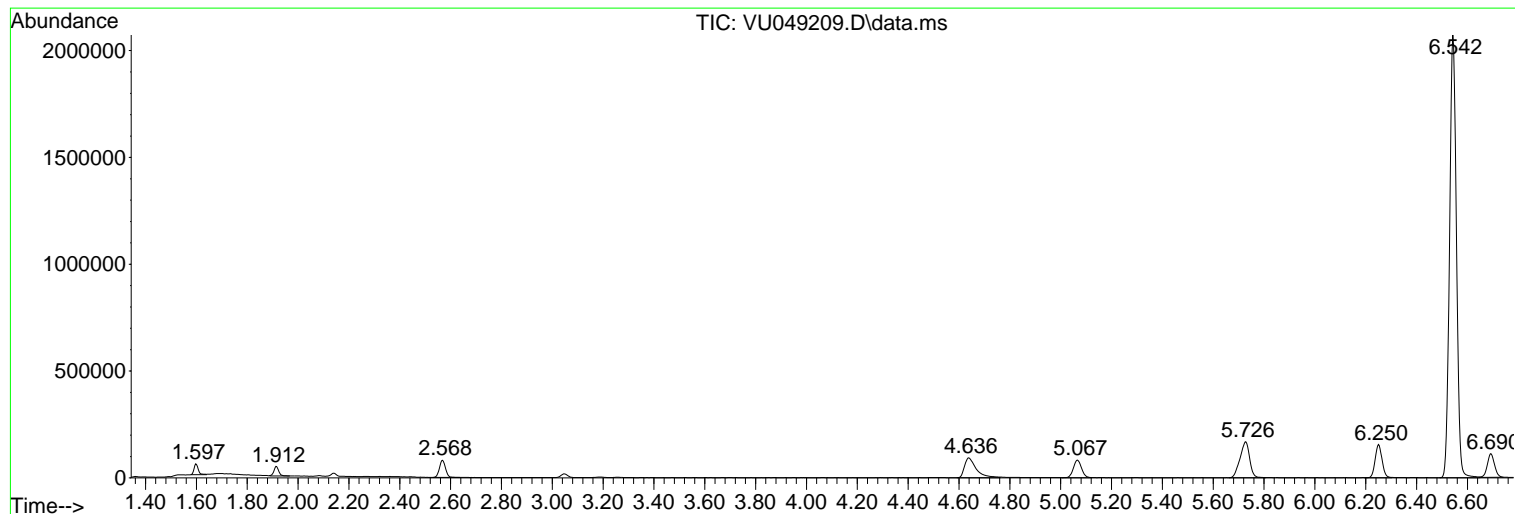
Sum of corrected areas: 7872681

Data Path : Z:\voasrv\HPCHEM1\MSVOA_U\Data\VU061622\
 Data File : VU049209.D
 Acq On : 16 Jun 2022 15:53
 Operator : SY/MD
 Sample : N3277-15 10000X
 Misc : 25.0mL/MSVOA_U/WATER
 ALS Vial : 18 Sample Multiplier: 1

Instrument :
 MSVOA_U
 ClientSampleId :
 COBB4

Quant Method : Z:\voasrv\HPCHEM1\MSVOA_U\Method\SFAMUTR061422WMA.M
 Quant Title : TRACE VOA SFAM1.0

TIC Library : C:\Database\NIST20.L
 TIC Integration Parameters: LSCINT.P



Library Search Compound Report

Data Path : Z:\voasrv\HPCHEM1\MSVOA_U\Data\VU061622\
Data File : VU049209.D
Acq On : 16 Jun 2022 15:53
Operator : SY/MD
Sample : N3277-15 10000X
Misc : 25.0mL/MSVOA_U/WATER
ALS Vial : 18 Sample Multiplier: 1

Instrument :
MSVOA_U
ClientSampleId :
C0BB4

Quant Method : Z:\voasrv\HPCHEM1\MSVOA_U\Method\SFAMUTR061422WMA.M
Quant Title : TRACE VOA SFAM1.0

TIC Library : C:\Database\NIST20.L
TIC Integration Parameters: LSCINT.P

No Library Search Compounds Detected

Data Path : Z:\voasrv\HPCHEM1\MSVOA_U\Data\VU061622\
Data File : VU049209.D
Acq On : 16 Jun 2022 15:53
Operator : SY/MD
Sample : N3277-15 10000X
Misc : 25.0mL/MSVOA_U/WATER
ALS Vial : 18 Sample Multiplier: 1

Instrument :
MSVOA_U
ClientSampleId :
C0BB4

Quant Method : Z:\voasrv\HPCHEM1\MSVOA_U\Method\SFAMUTR061422WMA.M
Quant Title : TRACE VOA SFAM1.0

TIC Library : C:\Database\NIST20.L
TIC Integration Parameters: LSCINT.P

TIC Top Hit name	RT	EstConc	Units	Response	--Internal Standard--			
					#	RT	Resp	Conc
