

Data Path : Z:\voasrv\HPCHEM1\MSVOA_U\Data\VU101122\
 Data File : VU051380.D
 Acq On : 11 Oct 2022 18:06
 Operator : JC/MD
 Sample : N5072-02
 Misc : 25.0mL/MSVOA_U/WATER
 ALS Vial : 16 Sample Multiplier: 1

Instrument :
 MSVOA_U
 ClientSampleId :
 C1BG5

Quant Time: Oct 11 23:39:25 2022
 Quant Method : Z:\voasrv\HPCHEM1\MSVOA_U\Method\SFAMUTR100722WMA.M
 Quant Title : TRACE VOA SFAM1.0
 QLast Update : Tue Oct 11 23:36:07 2022
 Response via : Initial Calibration

Compound	R.T.	QIon	Response	Conc	Units	Dev(Min)

Internal Standards						
1) 1,4-Difluorobenzene	6.247	114	183918	5.000	ug/L	0.00
28) Chlorobenzene-d5	9.417	117	217819	5.000	ug/L	0.00
58) 1,4-Dichlorobenzene-d4	11.812	152	84050	5.000	ug/L	0.00
System Monitoring Compounds						
4) Vinyl Chloride-d3	1.594	65	40826	2.752	ug/L	0.00
Spiked Amount	5.000	Range 40 - 130	Recovery	=	55.000%	
7) Chloroethane-d5	1.909	69	44631	3.501	ug/L	0.00
Spiked Amount	5.000	Range 65 - 130	Recovery	=	70.000%	
11) 1,1-Dichloroethene-d2	2.562	65	19331	3.296	ug/L	0.00
Spiked Amount	5.000	Range 60 - 125	Recovery	=	66.000%	
20) 2-Butanone-d5	4.626	46	199574	61.101	ug/L	0.00
Spiked Amount	50.000	Range 40 - 130	Recovery	=	122.200%	
24) Chloroform-d	5.060	84	137722	4.979	ug/L	0.00
Spiked Amount	5.000	Range 70 - 125	Recovery	=	99.600%	
26) 1,2-Dichloroethane-d4	5.700	65	74881	5.250	ug/L	0.00
Spiked Amount	5.000	Range 70 - 130	Recovery	=	105.000%	
32) Benzene-d6	5.726	84	224180	3.741	ug/L	0.00
Spiked Amount	5.000	Range 70 - 125	Recovery	=	74.800%	
36) 1,2-Dichloropropane-d6	6.690	67	88311	4.339	ug/L	0.00
Spiked Amount	5.000	Range 60 - 140	Recovery	=	86.800%	
41) Toluene-d8	7.896	98	162428	3.030	ug/L	0.00
Spiked Amount	5.000	Range 70 - 130	Recovery	=	60.600%#	
43) trans-1,3-Dichloroprop...	8.179	79	25787	3.857	ug/L	0.00
Spiked Amount	5.000	Range 55 - 130	Recovery	=	77.200%	
46) 2-Hexanone-d5	8.632	63	110037	48.832	ug/L	0.00
Spiked Amount	50.000	Range 45 - 130	Recovery	=	97.660%	
56) 1,1,2,2-Tetrachloroeth...	10.754	84	82436	5.071	ug/L	0.00
Spiked Amount	5.000	Range 65 - 120	Recovery	=	101.400%	
66) 1,2-Dichlorobenzene-d4	12.192	152	70006	4.792	ug/L	0.00
Spiked Amount	5.000	Range 80 - 120	Recovery	=	95.800%	

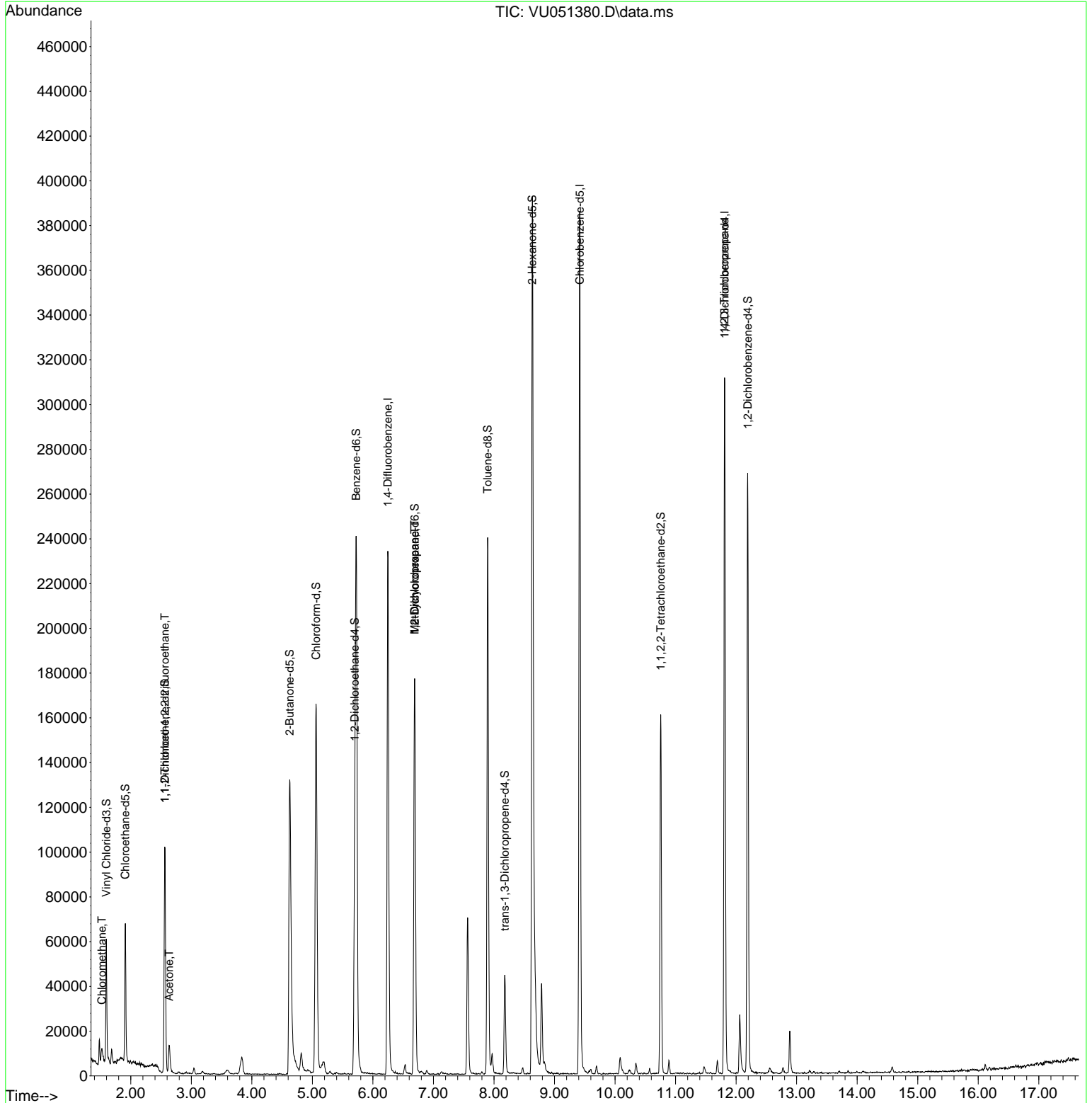
Target Compounds						Qvalue
3) Chloromethane	1.523	50	5292	0.251	ug/L #	79
10) 1,1,2-Trichloro-1,2,2-...	2.562	101	749	0.052	ug/L #	21
13) Acetone	2.636	43	16426	6.705	ug/L	97
35) Methylcyclohexane	6.690	83	20291	0.887	ug/L #	17
37) 1,2-Dichloropropane	6.690	63	8727	0.438	ug/L #	88
61) 1,2,3-Trichloropropane	11.809	75	11081	1.044	ug/L #	71

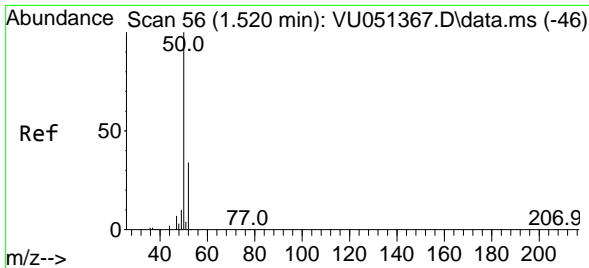
(#) = qualifier out of range (m) = manual integration (+) = signals summed

Data Path : Z:\voasrv\HPCHEM1\MSVOA_U\Data\VU011122\
 Data File : VU051380.D
 Acq On : 11 Oct 2022 18:06
 Operator : JC/MD
 Sample : N5072-02
 Misc : 25.0mL/MSVOA_U/WATER
 ALS Vial : 16 Sample Multiplier: 1

Instrument :
 MSVOA_U
ClientSampleId :
 C1BG5

Quant Time: Oct 11 23:39:25 2022
 Quant Method : Z:\voasrv\HPCHEM1\MSVOA_U\Method\SFAMUTR100722WMA.M
 Quant Title : TRACE VOA SFAM1.0
 QLast Update : Tue Oct 11 23:36:07 2022
 Response via : Initial Calibration

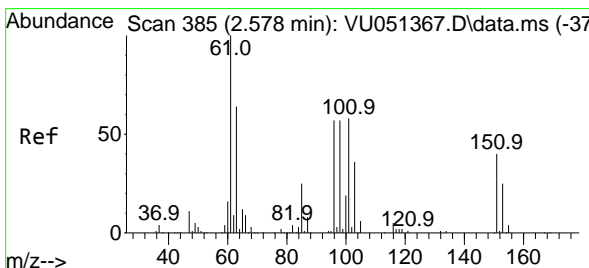
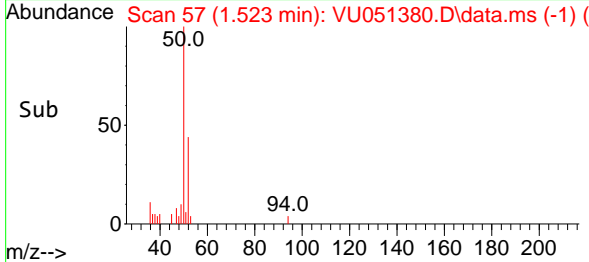
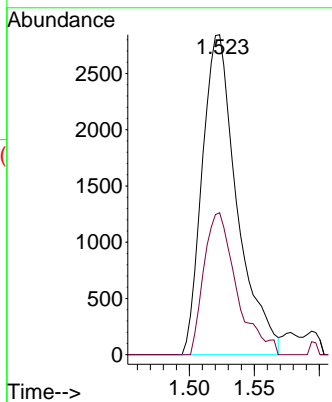
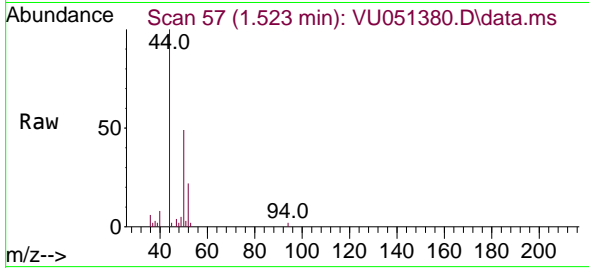




#3
 Chloromethane
 Concen: 0.251 ug/L
 RT: 1.523 min Scan# 51
 Delta R.T. 0.003 min
 Lab File: VU051380.D
 Acq: 11 Oct 2022 18:06

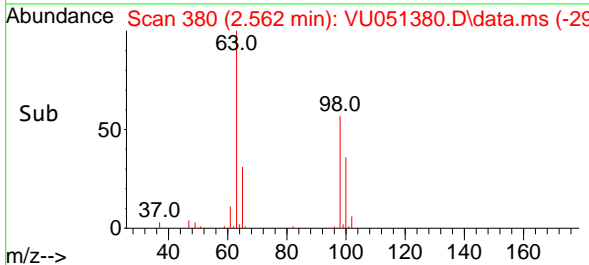
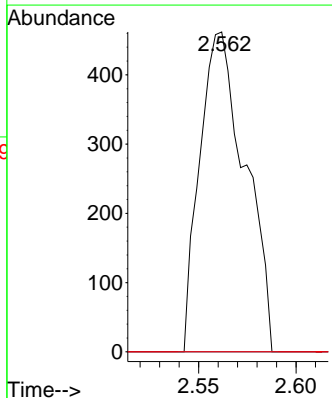
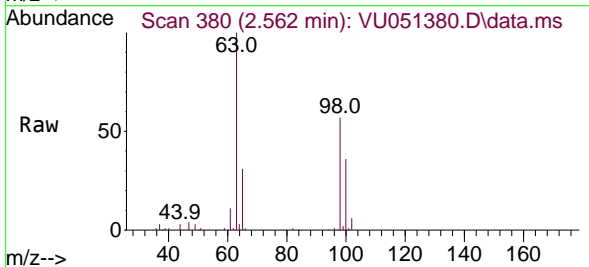
Instrument :
 MSVOA_U
 ClientSampleId :
 C1BG5

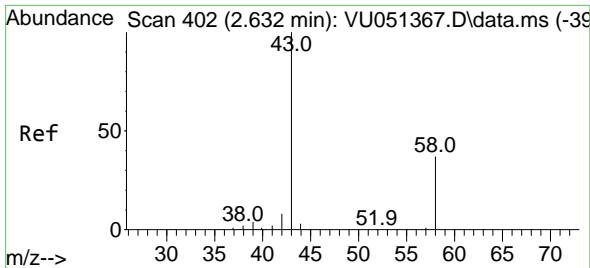
Tgt Ion: 50 Resp: 5292
 Ion Ratio Lower Upper
 50 100
 52 44.4 22.9 42.5#



#10
 1,1,2-Trichloro-1,2,2-trifluoroethane
 Concen: 0.052 ug/L
 RT: 2.562 min Scan# 380
 Delta R.T. -0.016 min
 Lab File: VU051380.D
 Acq: 11 Oct 2022 18:06

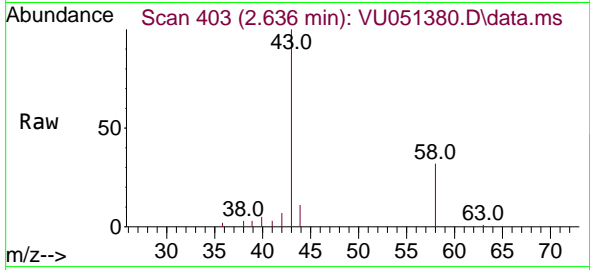
Tgt Ion:101 Resp: 749
 Ion Ratio Lower Upper
 101 100
 85 0.0 34.6 51.8#
 151 0.0 56.5 84.7#



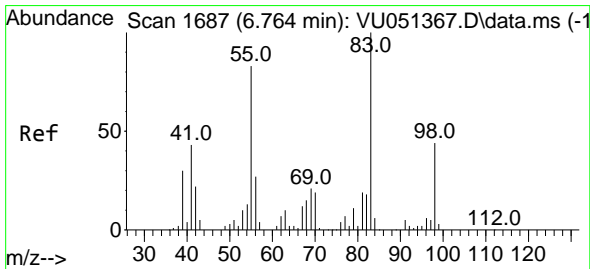
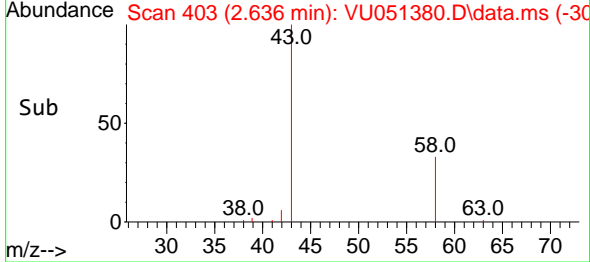
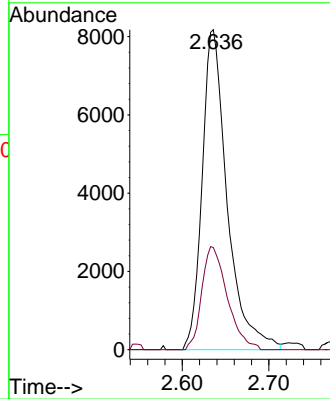


#13
 Acetone
 Concen: 6.705 ug/L
 RT: 2.636 min Scan# 402
 Delta R.T. 0.003 min
 Lab File: VU051380.D
 Acq: 11 Oct 2022 18:06

Instrument : MSVOA_U
 ClientSampleId : C1BG5

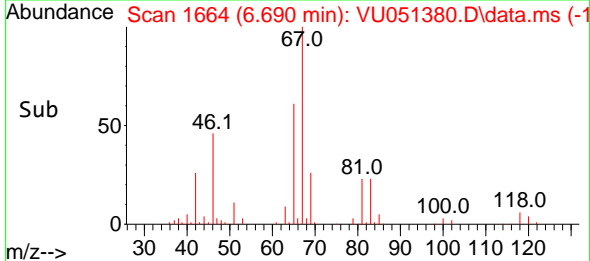
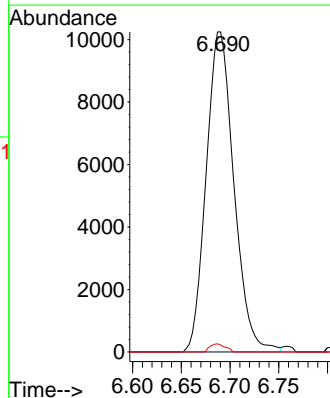
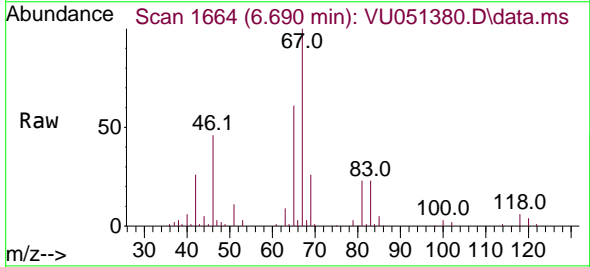


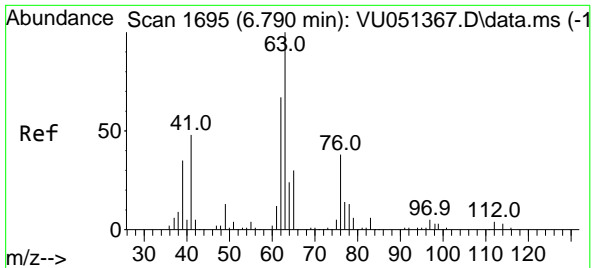
Tgt Ion: 43 Resp: 16426
 Ion Ratio Lower Upper
 43 100
 58 32.7 0.0 68.8



#35
 Methylcyclohexane
 Concen: 0.887 ug/L
 RT: 6.690 min Scan# 1664
 Delta R.T. -0.074 min
 Lab File: VU051380.D
 Acq: 11 Oct 2022 18:06

Tgt Ion: 83 Resp: 20291
 Ion Ratio Lower Upper
 83 100
 55 0.4 65.8 98.6#
 98 1.4 35.9 53.9#

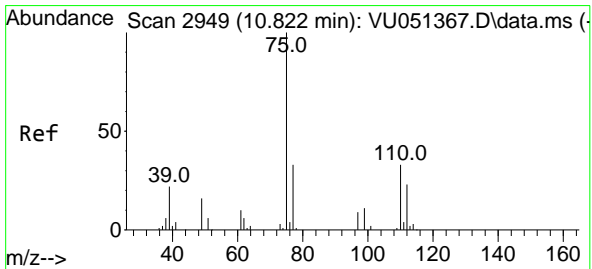
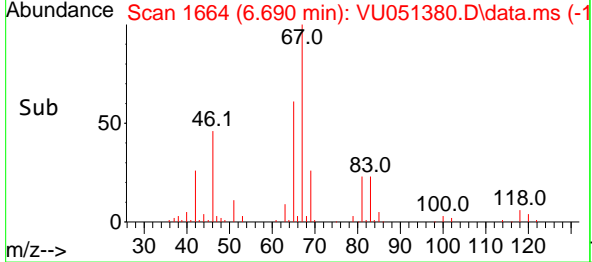
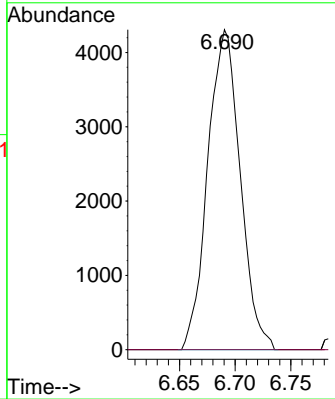
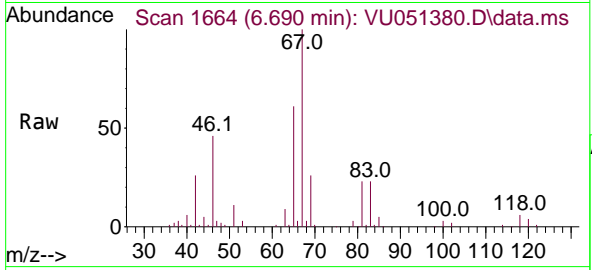




#37
 1,2-Dichloropropane
 Concen: 0.438 ug/L
 RT: 6.690 min Scan# 1
 Delta R.T. -0.100 min
 Lab File: VU051380.D
 Acq: 11 Oct 2022 18:06

Instrument : MSVOA_U
 ClientSampleId : C1BG5

Tgt Ion: 63 Resp: 8727
 Ion Ratio Lower Upper
 63 100
 112 0.0 3.2 4.8#



#61
 1,2,3-Trichloropropane
 Concen: 1.044 ug/L
 RT: 11.809 min Scan# 3256
 Delta R.T. 0.987 min
 Lab File: VU051380.D
 Acq: 11 Oct 2022 18:06

Tgt Ion: 75 Resp: 11081
 Ion Ratio Lower Upper
 75 100
 110 2.2 27.0 40.6#
 77 32.2 26.4 39.6

