

Data Path : Z:\voasrv\HPCHEM1\MSVOA_U\Data\VU110222\
 Data File : VU051682.D
 Acq On : 02 Nov 2022 11:00
 Operator : JC/MD
 Sample : VU1102WBL01
 Misc : 25.0mL/MSVOA_U/WATER
 ALS Vial : 4 Sample Multiplier: 1

Instrument :
 MSVOA_U
 ClientSampleId :
 VBLK128

Quant Time: Nov 03 01:46:28 2022
 Quant Method : Z:\voasrv\HPCHEM1\MSVOA_U\Method\SFAMUTR102822WMA.M
 Quant Title : TRACE VOA SFAM1.0
 QLast Update : Thu Nov 03 01:45:18 2022
 Response via : Initial Calibration

Compound	R.T.	QIon	Response	Conc	Units	Dev(Min)

Internal Standards						
1) 1,4-Difluorobenzene	6.247	114	162880	5.000	ug/L	0.00
28) Chlorobenzene-d5	9.417	117	172731	5.000	ug/L	0.00
58) 1,4-Dichlorobenzene-d4	11.812	152	68933	5.000	ug/L	0.00
System Monitoring Compounds						
4) Vinyl Chloride-d3	1.597	65	69169	5.638	ug/L	0.00
Spiked Amount	5.000	Range 40 - 130	Recovery	=	112.800%	
7) Chloroethane-d5	1.912	69	62786	4.907	ug/L	0.00
Spiked Amount	5.000	Range 65 - 130	Recovery	=	98.200%	
11) 1,1-Dichloroethene-d2	2.565	65	27013	6.067	ug/L	0.00
Spiked Amount	5.000	Range 60 - 125	Recovery	=	121.400%	
20) 2-Butanone-d5	4.639	46	170450	38.366	ug/L	0.01
Spiked Amount	50.000	Range 40 - 130	Recovery	=	76.740%	
24) Chloroform-d	5.060	84	140479	4.894	ug/L	0.00
Spiked Amount	5.000	Range 70 - 125	Recovery	=	97.800%	
26) 1,2-Dichloroethane-d4	5.703	65	71241	4.594	ug/L	0.00
Spiked Amount	5.000	Range 70 - 130	Recovery	=	91.800%	
32) Benzene-d6	5.726	84	270511	4.963	ug/L	0.00
Spiked Amount	5.000	Range 70 - 125	Recovery	=	99.200%	
36) 1,2-Dichloropropane-d6	6.690	67	91478	4.799	ug/L	0.00
Spiked Amount	5.000	Range 60 - 140	Recovery	=	96.000%	
41) Toluene-d8	7.896	98	209153	4.879	ug/L	0.00
Spiked Amount	5.000	Range 70 - 130	Recovery	=	97.600%	
43) trans-1,3-Dichloroprop...	8.179	79	28066	4.816	ug/L	0.00
Spiked Amount	5.000	Range 55 - 130	Recovery	=	96.400%	
46) 2-Hexanone-d5	8.636	63	122960	35.048	ug/L	0.00
Spiked Amount	50.000	Range 45 - 130	Recovery	=	70.100%	
56) 1,1,2,2-Tetrachloroeth...	10.755	84	75740	4.336	ug/L	0.00
Spiked Amount	5.000	Range 65 - 120	Recovery	=	86.800%	
66) 1,2-Dichlorobenzene-d4	12.192	152	72333	5.717	ug/L	0.00
Spiked Amount	5.000	Range 80 - 120	Recovery	=	114.400%	

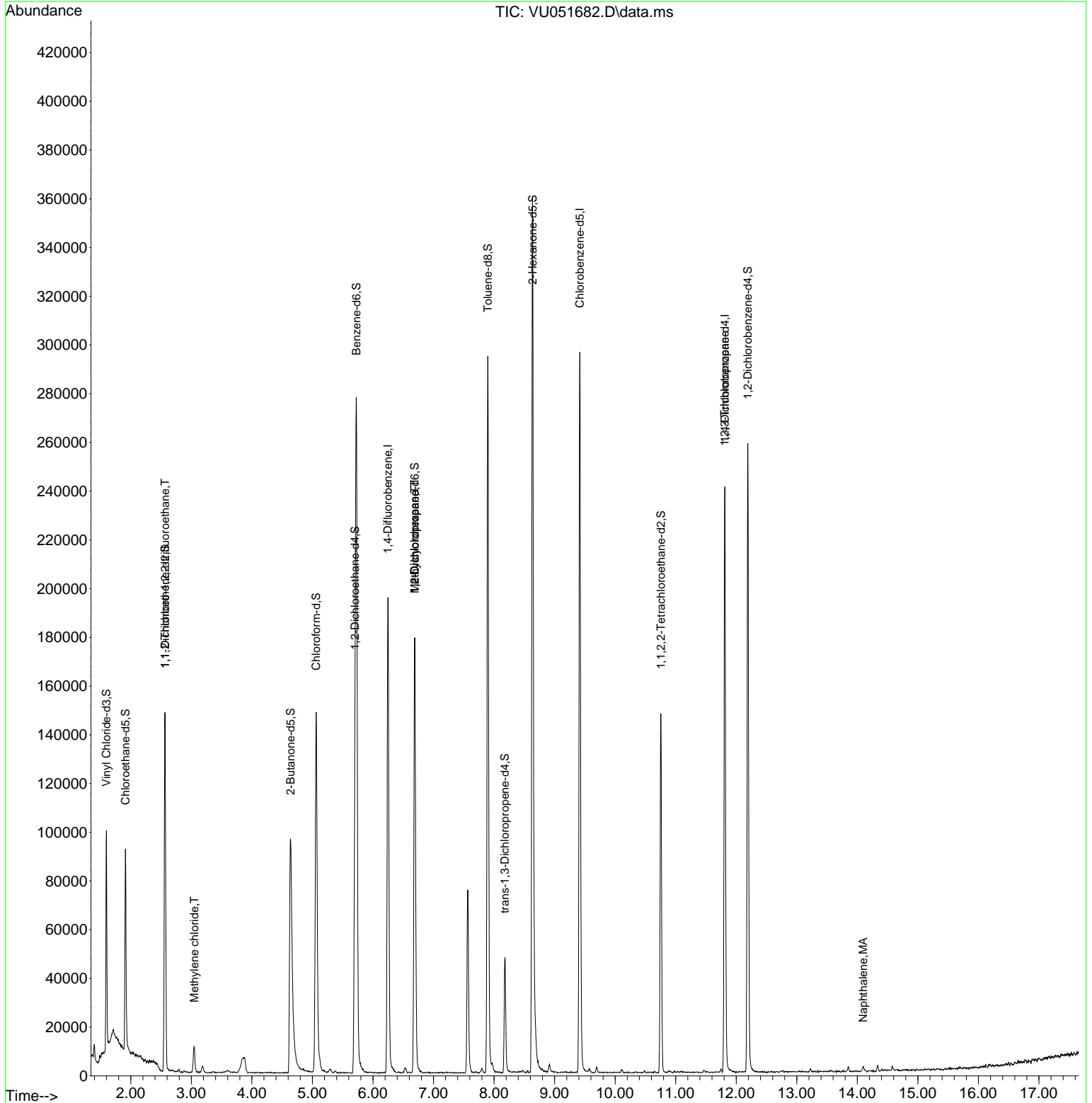
Target Compounds						Qvalue
10) 1,1,2-Trichloro-1,2,2-...	2.565	101	812	0.058	ug/L #	19
16) Methylene chloride	3.047	84	5505	0.237	ug/L	95
35) Methylcyclohexane	6.690	83	20551	0.904	ug/L #	20
37) 1,2-Dichloropropane	6.690	63	9041	0.516	ug/L #	88
61) 1,2,3-Trichloropropane	11.809	75	8389	0.941	ug/L #	66
71) Naphthalene	14.095	128	2748	0.107	ug/L #	86

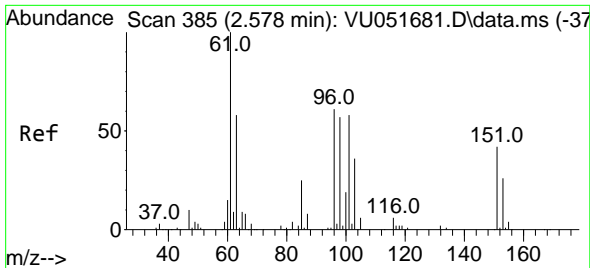
(#) = qualifier out of range (m) = manual integration (+) = signals summed

Data Path : Z:\voasrv\HPCHEM1\MSVOA_U\Data\VU110222\
 Data File : VU051682.D
 Acq On : 02 Nov 2022 11:00
 Operator : JC/MD
 Sample : VU1102WBL01
 Misc : 25.0mL/MSVOA_U/WATER
 ALS Vial : 4 Sample Multiplier: 1

Instrument :
 MSVOA_U
 ClientSampleId :
 VBLK128

Quant Time: Nov 03 01:46:28 2022
 Quant Method : Z:\voasrv\HPCHEM1\MSVOA_U\Method\SFAMUTR102822WMA.M
 Quant Title : TRACE VOA SFAM1.0
 QLast Update : Thu Nov 03 01:45:18 2022
 Response via : Initial Calibration

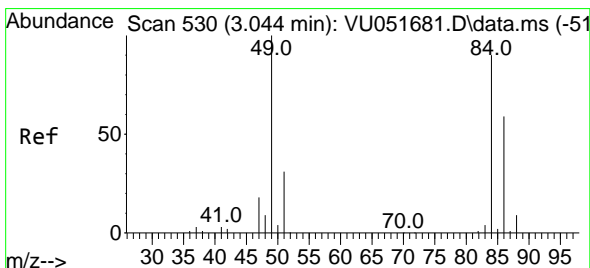
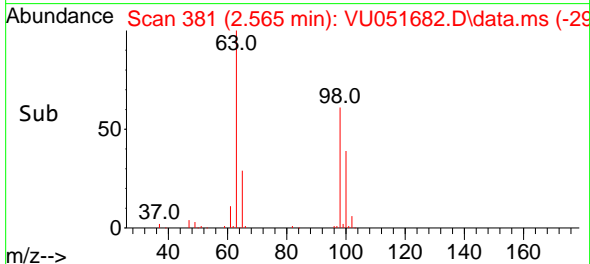
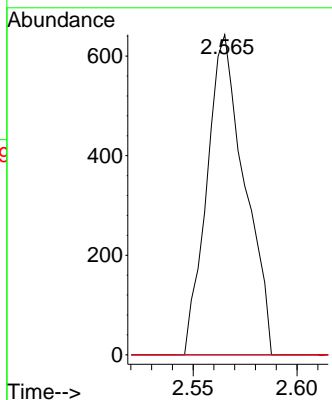
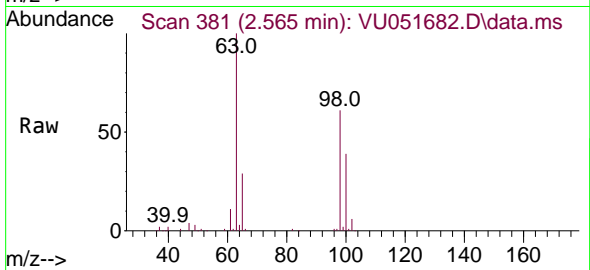




#10
 1,1,2-Trichloro-1,2,2-trifluoroethane
 Concen: 0.058 ug/L
 RT: 2.565 min Scan# 381
 Delta R.T. -0.013 min
 Lab File: VU051682.D
 Acq: 02 Nov 2022 11:00

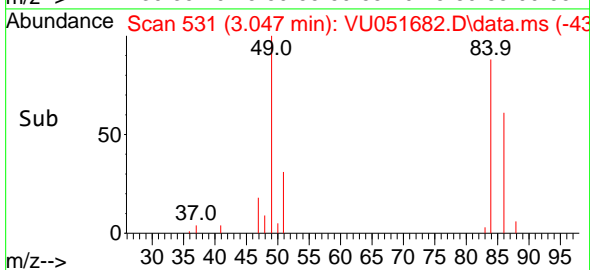
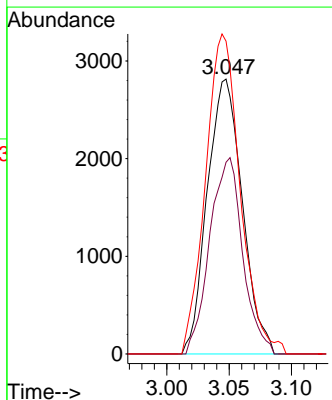
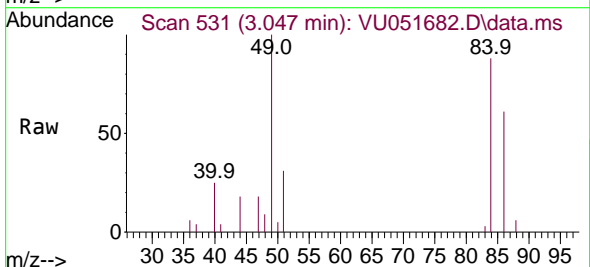
Instrument : MSVOA_U
 ClientSampleId : VBLK128

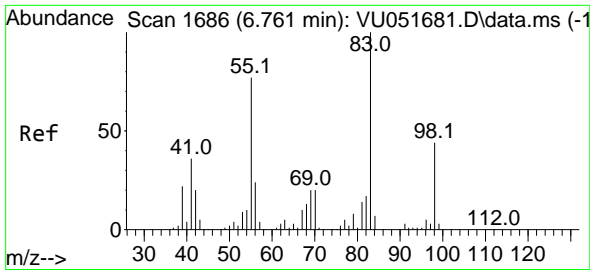
Tgt Ion	Resp	Lower	Upper
101	100		
85	0.0	35.6	53.4#
151	0.0	59.6	89.4#



#16
 Methylene chloride
 Concen: 0.237 ug/L
 RT: 3.047 min Scan# 531
 Delta R.T. 0.003 min
 Lab File: VU051682.D
 Acq: 02 Nov 2022 11:00

Tgt Ion	Resp	Lower	Upper
84	100		
86	69.8	46.3	85.9
49	113.8	76.0	141.2

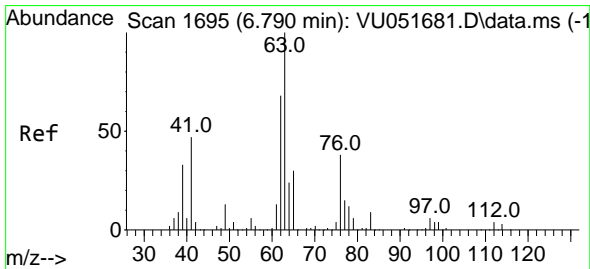
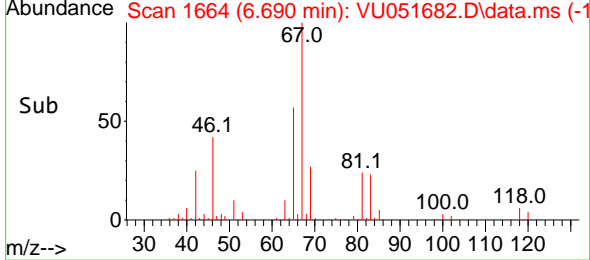
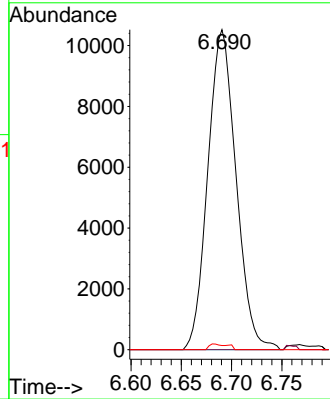
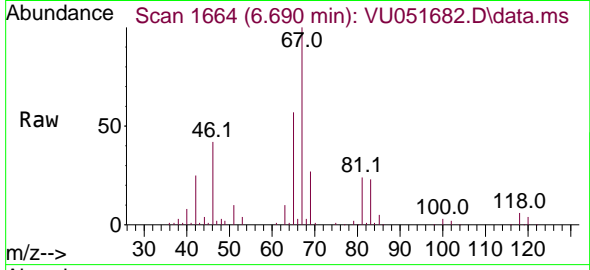




#35
 Methylcyclohexane
 Concen: 0.904 ug/L
 RT: 6.690 min Scan# 1664
 Delta R.T. -0.071 min
 Lab File: VU051682.D
 Acq: 02 Nov 2022 11:00

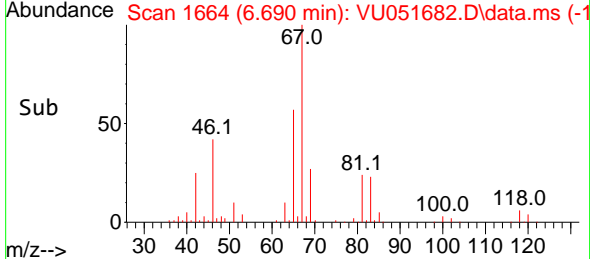
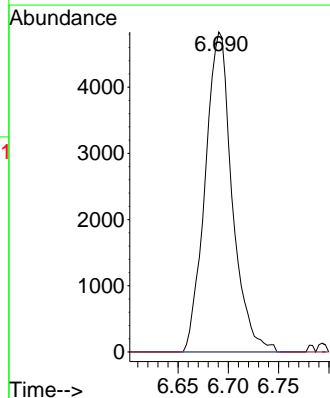
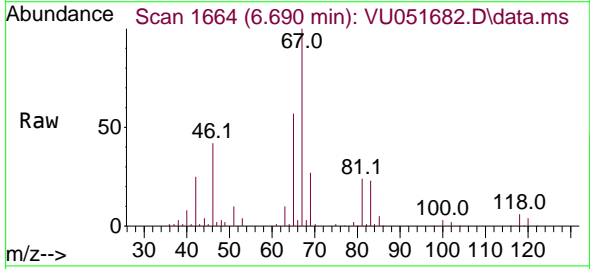
Instrument : MSVOA_U
 ClientSampleId : VBLK128

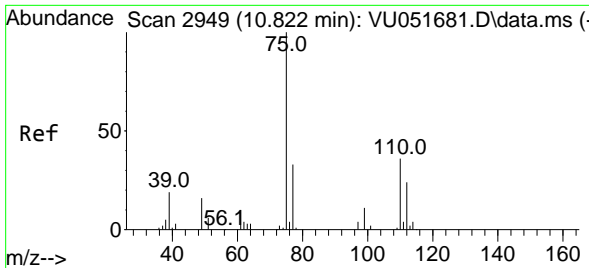
Tgt Ion	Resp	Lower	Upper
83	100		
55	0.5	60.6	90.8#
98	0.7	35.8	53.6#



#37
 1,2-Dichloropropane
 Concen: 0.516 ug/L
 RT: 6.690 min Scan# 1664
 Delta R.T. -0.100 min
 Lab File: VU051682.D
 Acq: 02 Nov 2022 11:00

Tgt Ion	Resp	Lower	Upper
63	100		
112	0.2	3.3	4.9#



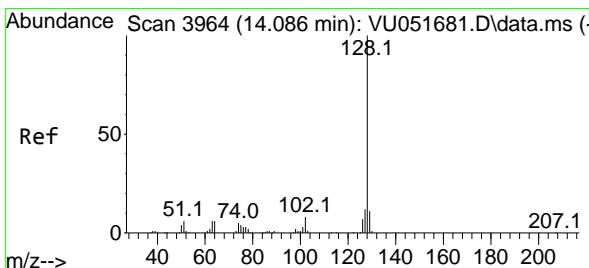
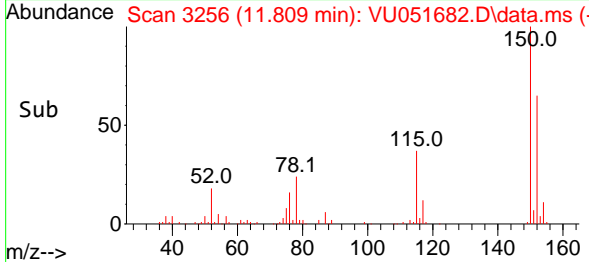
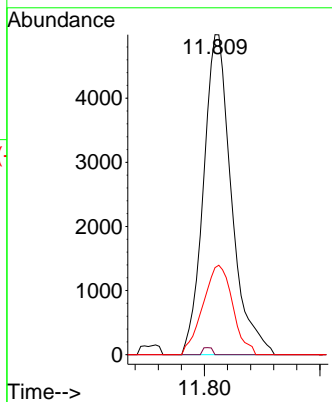
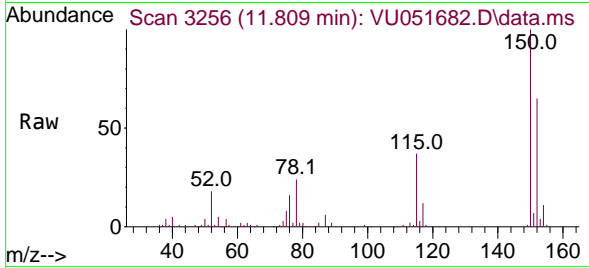


#61
 1,2,3-Trichloropropane
 Concen: 0.941 ug/L
 RT: 11.809 min Scan# 31
 Delta R.T. 0.987 min
 Lab File: VU051682.D
 Acq: 02 Nov 2022 11:00

Instrument :
 MSVOA_U
 ClientSampleId :
 VBLK128

Tgt Ion: 75 Resp: 8389

Ion	Ratio	Lower	Upper
75	100		
110	0.7	28.7	43.1#
77	29.8	26.1	39.1



#71
 Naphthalene
 Concen: 0.107 ug/L
 RT: 14.095 min Scan# 3967
 Delta R.T. 0.010 min
 Lab File: VU051682.D
 Acq: 02 Nov 2022 11:00

Tgt Ion: 128 Resp: 2748

Ion	Ratio	Lower	Upper
128	100		
129	1.5	8.4	12.6#
127	10.4	10.3	15.5

