

Data Path : Z:\voasrv\HPCHEM1\MSVOA_U\Data\VU110222\
 Data File : VU051694.D
 Acq On : 02 Nov 2022 16:05
 Operator : JC/MD
 Sample : N5321-09DL 10X
 Misc : 25.0mL/MSVOA_U/WATER
 ALS Vial : 16 Sample Multiplier: 1

Instrument :
 MSVOA_U
 ClientSampleId :
 DBWR5DL

Quant Time: Nov 03 01:49:03 2022
 Quant Method : Z:\voasrv\HPCHEM1\MSVOA_U\Method\SFAMUTR102822WMA.M
 Quant Title : TRACE VOA SFAM1.0
 QLast Update : Thu Nov 03 01:45:18 2022
 Response via : Initial Calibration

Compound	R.T.	QIon	Response	Conc	Units	Dev(Min)

Internal Standards						
1) 1,4-Difluorobenzene	6.247	114	189979	5.000	ug/L	0.00
28) Chlorobenzene-d5	9.417	117	196581	5.000	ug/L	0.00
58) 1,4-Dichlorobenzene-d4	11.812	152	82180	5.000	ug/L	0.00
System Monitoring Compounds						
4) Vinyl Chloride-d3	1.597	65	73426	5.132	ug/L	0.00
Spiked Amount	5.000	Range 40 - 130	Recovery	=	102.600%	
7) Chloroethane-d5	1.909	69	66401	4.450	ug/L	0.00
Spiked Amount	5.000	Range 65 - 130	Recovery	=	89.000%	
11) 1,1-Dichloroethene-d2	2.562	65	29863	5.751	ug/L	0.00
Spiked Amount	5.000	Range 60 - 125	Recovery	=	115.000%	
20) 2-Butanone-d5	4.620	46	179498	34.640	ug/L	0.00
Spiked Amount	50.000	Range 40 - 130	Recovery	=	69.280%	
24) Chloroform-d	5.060	84	151581	4.527	ug/L	0.00
Spiked Amount	5.000	Range 70 - 125	Recovery	=	90.600%	
26) 1,2-Dichloroethane-d4	5.700	65	72682	4.018	ug/L	0.00
Spiked Amount	5.000	Range 70 - 130	Recovery	=	80.400%	
32) Benzene-d6	5.726	84	290533	4.683	ug/L	0.00
Spiked Amount	5.000	Range 70 - 125	Recovery	=	93.600%	
36) 1,2-Dichloropropane-d6	6.690	67	97710	4.504	ug/L	0.00
Spiked Amount	5.000	Range 60 - 140	Recovery	=	90.000%	
41) Toluene-d8	7.896	98	233892	4.794	ug/L	0.00
Spiked Amount	5.000	Range 70 - 130	Recovery	=	95.800%	
43) trans-1,3-Dichloroprop...	8.179	79	29060	4.381	ug/L	0.00
Spiked Amount	5.000	Range 55 - 130	Recovery	=	87.600%	
46) 2-Hexanone-d5	8.632	63	136078	34.081	ug/L	0.00
Spiked Amount	50.000	Range 45 - 130	Recovery	=	68.160%	
56) 1,1,2,2-Tetrachloroeth...	10.755	84	79756	4.012	ug/L	0.00
Spiked Amount	5.000	Range 65 - 120	Recovery	=	80.200%	
66) 1,2-Dichlorobenzene-d4	12.192	152	81641	5.413	ug/L	0.00
Spiked Amount	5.000	Range 80 - 120	Recovery	=	108.200%	

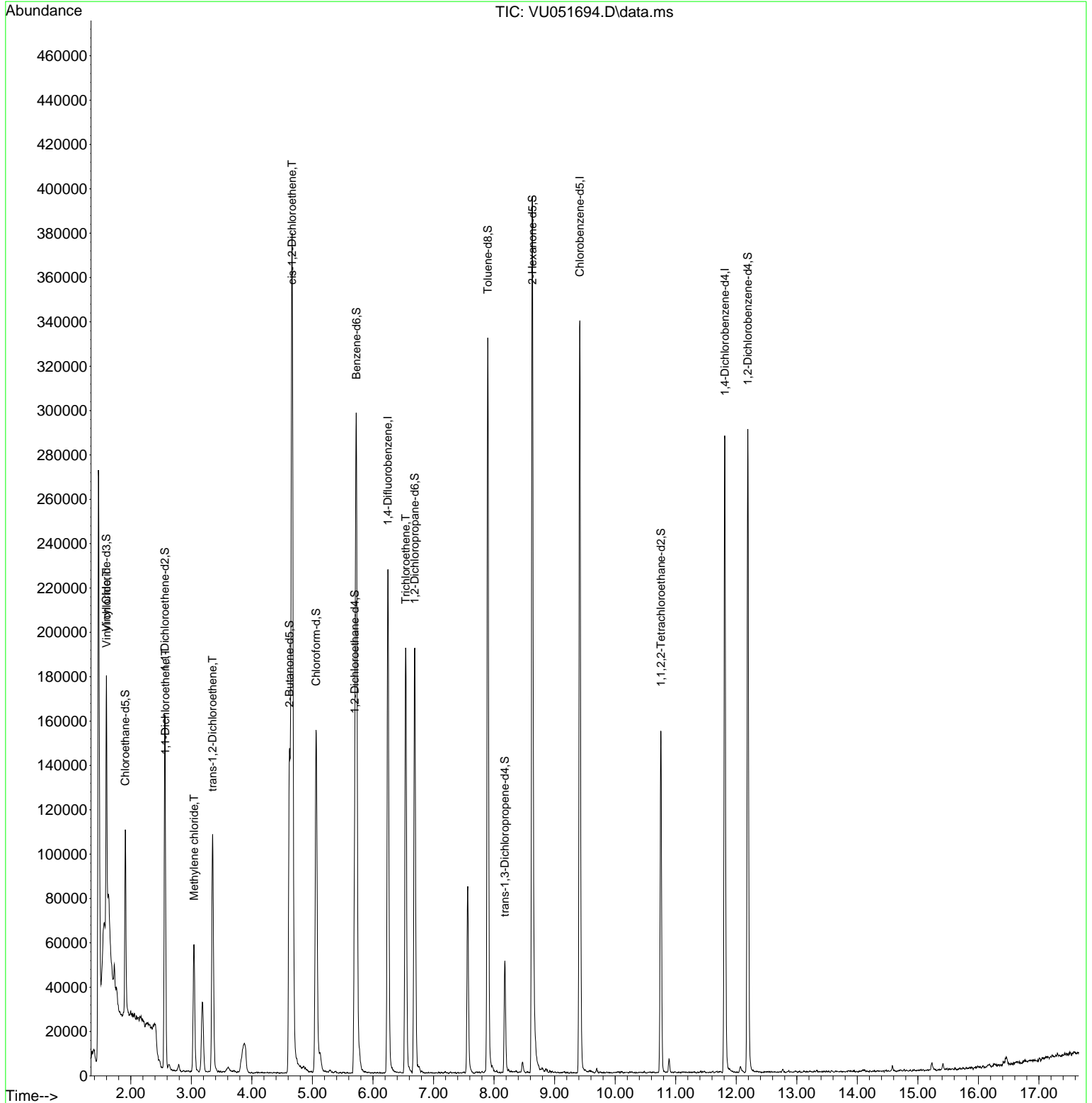
Target Compounds						Qvalue
5) Vinyl chloride	1.601	62	15132	0.603	ug/L #	1
12) 1,1-Dichloroethene	2.572	96	2725	0.165	ug/L #	1
16) Methylene chloride	3.044	84	28779	1.064	ug/L	96
18) trans-1,2-Dichloroethene	3.350	96	47629	2.687	ug/L	97
22) cis-1,2-Dichloroethene	4.665	96	201191	10.258	ug/L	100
34) Trichloroethene	6.539	95	68205	3.643	ug/L	97

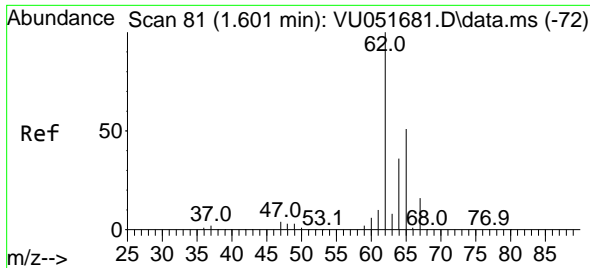
(#) = qualifier out of range (m) = manual integration (+) = signals summed

Data Path : Z:\voasrv\HPCHEM1\MSVOA_U\Data\VU110222\
 Data File : VU051694.D
 Acq On : 02 Nov 2022 16:05
 Operator : JC/MD
 Sample : N5321-09DL 10X
 Misc : 25.0mL/MSVOA_U/WATER
 ALS Vial : 16 Sample Multiplier: 1

Instrument :
 MSVOA_U
 ClientSampleId :
 DBWR5DL

Quant Time: Nov 03 01:49:03 2022
 Quant Method : Z:\voasrv\HPCHEM1\MSVOA_U\Method\SFAMUTR102822WMA.M
 Quant Title : TRACE VOA SFAM1.0
 QLast Update : Thu Nov 03 01:45:18 2022
 Response via : Initial Calibration

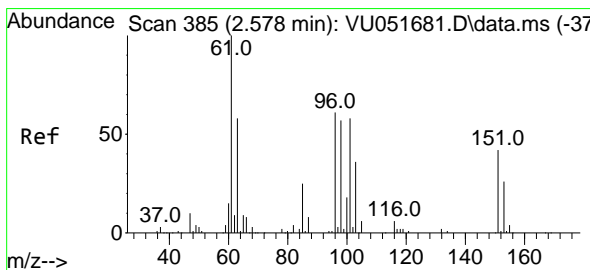
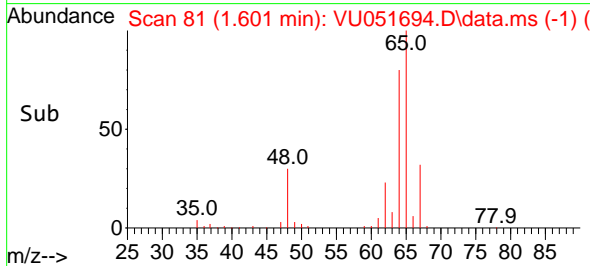
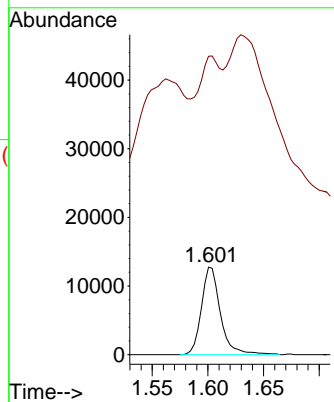
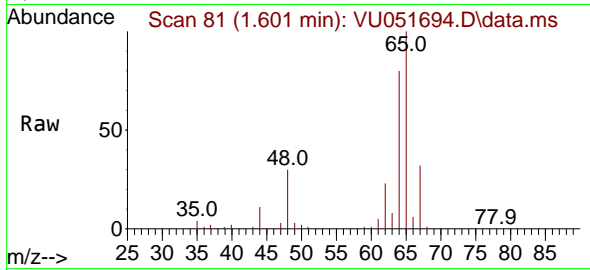




#5
 Vinyl chloride
 Concen: 0.603 ug/L
 RT: 1.601 min Scan# 81
 Delta R.T. 0.000 min
 Lab File: VU051694.D
 Acq: 02 Nov 2022 16:05

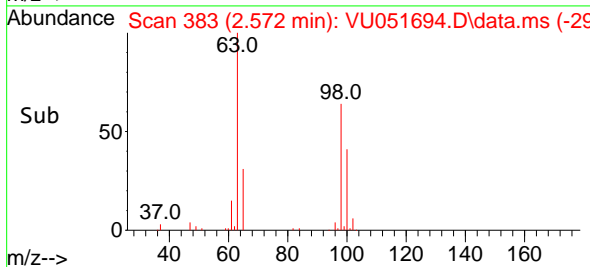
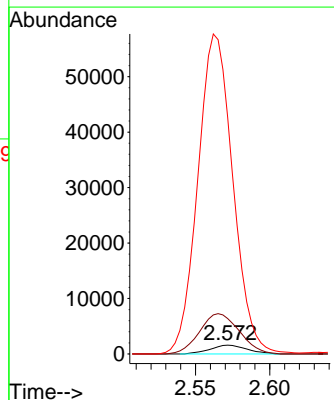
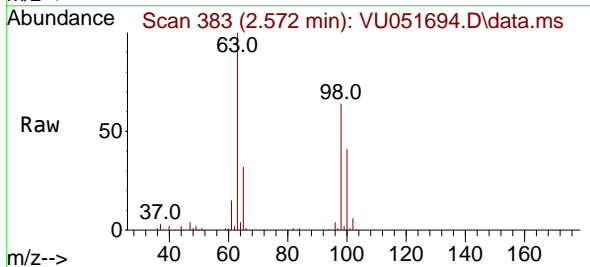
Instrument : MSVOA_U
 ClientSampleId : DBWR5DL

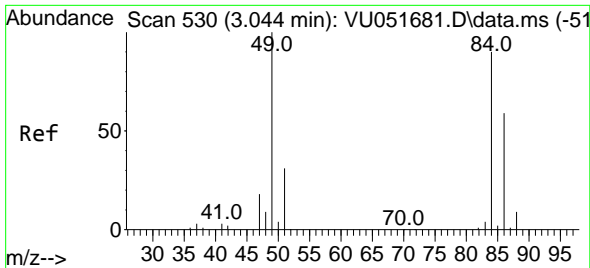
Tgt Ion: 62 Resp: 15132
 Ion Ratio Lower Upper
 62 100
 64 341.0 22.1 41.1#



#12
 1,1-Dichloroethene
 Concen: 0.165 ug/L
 RT: 2.572 min Scan# 383
 Delta R.T. -0.006 min
 Lab File: VU051694.D
 Acq: 02 Nov 2022 16:05

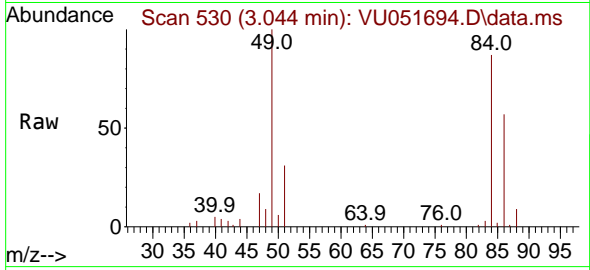
Tgt Ion: 96 Resp: 2725
 Ion Ratio Lower Upper
 96 100
 61 401.0 108.8 202.0#
 63 2679.9 64.9 120.5#





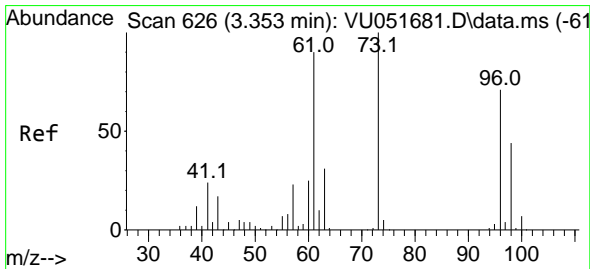
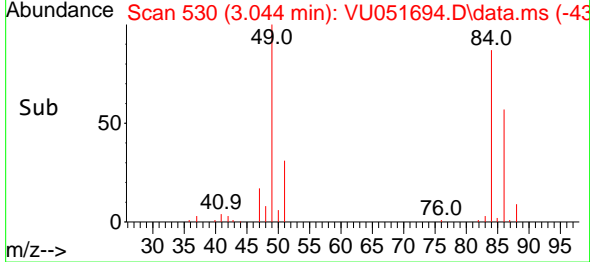
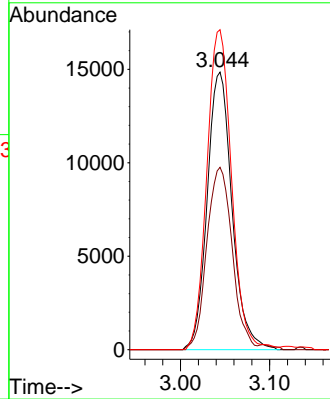
#16
 Methylene chloride
 Concen: 1.064 ug/L
 RT: 3.044 min Scan# 51
 Delta R.T. 0.000 min
 Lab File: VU051694.D
 Acq: 02 Nov 2022 16:05

Instrument : MSVOA_U
 ClientSampleId : DBWR5DL



Tgt Ion: 84 Resp: 28779

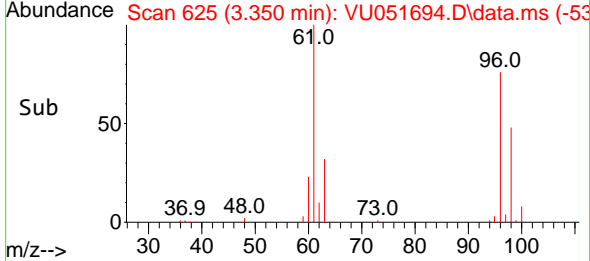
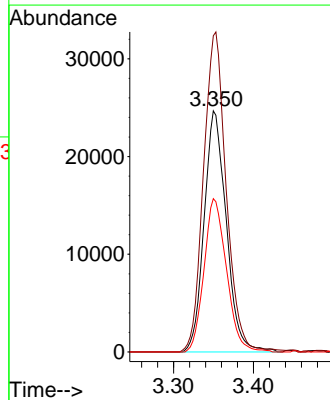
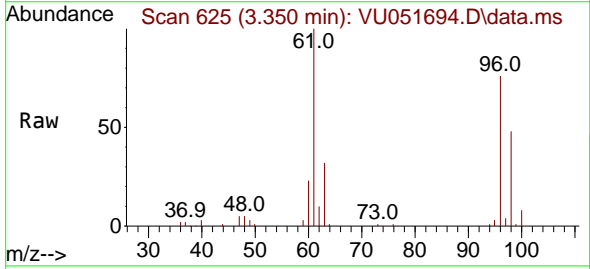
Ion	Ratio	Lower	Upper
84	100		
86	65.7	46.3	85.9
49	115.3	76.0	141.2

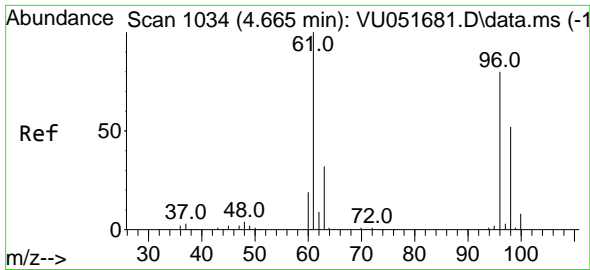


#18
 trans-1,2-Dichloroethene
 Concen: 2.687 ug/L
 RT: 3.350 min Scan# 625
 Delta R.T. -0.003 min
 Lab File: VU051694.D
 Acq: 02 Nov 2022 16:05

Tgt Ion: 96 Resp: 47629

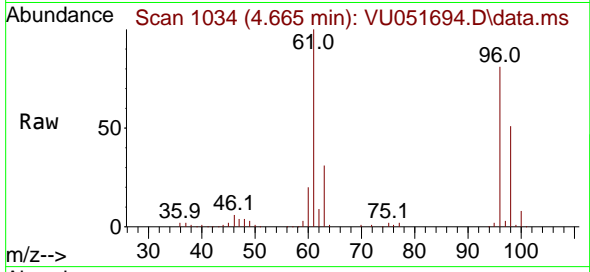
Ion	Ratio	Lower	Upper
96	100		
61	131.1	94.7	175.9
98	63.6	44.2	82.0



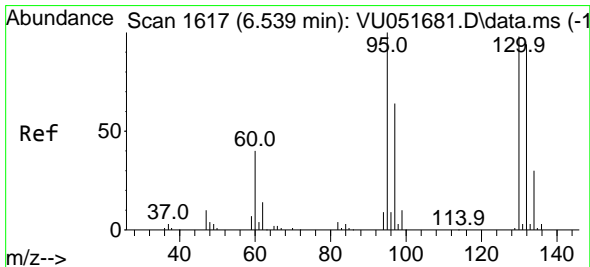
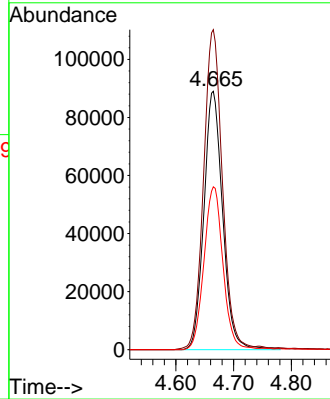
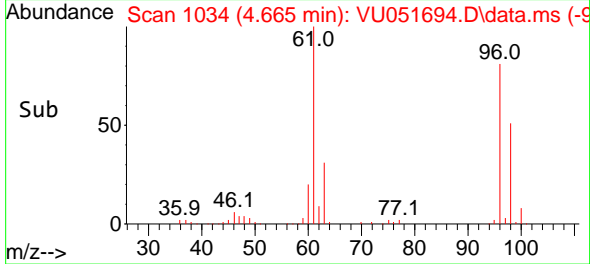


#22
 cis-1,2-Dichloroethene
 Concen: 10.258 ug/L
 RT: 4.665 min Scan# 1034
 Delta R.T. 0.000 min
 Lab File: VU051694.D
 Acq: 02 Nov 2022 16:05

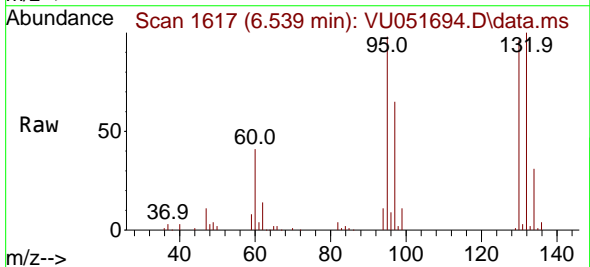
Instrument : MSVOA_U
 ClientSampleId : DBWR5DL



Tgt Ion: 96 Resp: 201191
 Ion Ratio Lower Upper
 96 100
 61 123.9 86.4 160.4
 98 63.1 44.2 82.2



#34
 Trichloroethene
 Concen: 3.643 ug/L
 RT: 6.539 min Scan# 1617
 Delta R.T. 0.000 min
 Lab File: VU051694.D
 Acq: 02 Nov 2022 16:05



Tgt Ion: 95 Resp: 68205
 Ion Ratio Lower Upper
 95 100
 97 66.2 45.2 84.0
 132 102.2 66.5 123.5
 130 98.1 68.3 126.8

