

Data Path : Z:\voasrv\HPCHEM1\MSVOA\_U\Data\VU112222\  
 Data File : VU052073.D  
 Acq On : 23 Nov 2022 06:40  
 Operator : JC/MD  
 Sample : N5693-09  
 Misc : 25.0mL/MSVOA\_U/WATER  
 ALS Vial : 35 Sample Multiplier: 1

Instrument :  
 MSVOA\_U  
 ClientSampleId :  
 GBN90

Quant Time: Nov 23 08:26:35 2022  
 Quant Method : Z:\voasrv\HPCHEM1\MSVOA\_U\Method\SFAMUTR111822WMA.M  
 Quant Title : TRACE VOA SFAM1.0  
 QLast Update : Sat Nov 19 21:39:41 2022  
 Response via : Initial Calibration

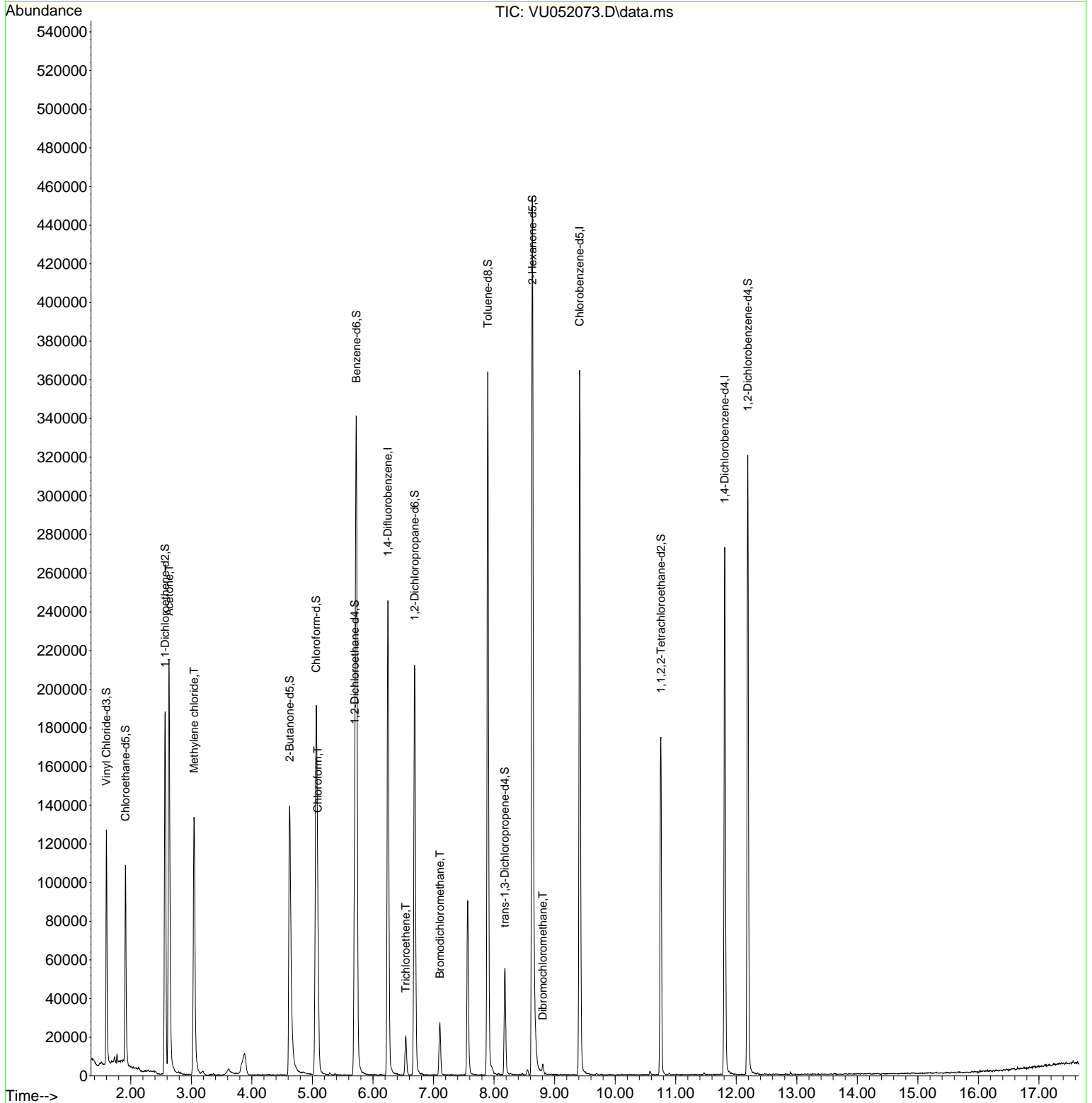
Compound	R.T.	QIon	Response	Conc	Units	Dev(Min)
-----						
Internal Standards						
1) 1,4-Difluorobenzene	6.247	114	200929	5.000	ug/L	0.00
28) Chlorobenzene-d5	9.414	117	214597	5.000	ug/L	0.00
58) 1,4-Dichlorobenzene-d4	11.809	152	76963	5.000	ug/L	0.00
System Monitoring Compounds						
4) Vinyl Chloride-d3	1.597	65	93784	4.798	ug/L	0.00
Spiked Amount	5.000	Range 40 - 130	Recovery	=	96.000%	
7) Chloroethane-d5	1.912	69	80738	5.319	ug/L	0.00
Spiked Amount	5.000	Range 65 - 130	Recovery	=	106.400%	
11) 1,1-Dichloroethene-d2	2.568	65	35046	5.002	ug/L	0.00
Spiked Amount	5.000	Range 60 - 125	Recovery	=	100.000%	
20) 2-Butanone-d5	4.623	46	213344	60.221	ug/L	0.00
Spiked Amount	50.000	Range 40 - 130	Recovery	=	120.440%	
24) Chloroform-d	5.060	84	166122	5.785	ug/L	0.00
Spiked Amount	5.000	Range 70 - 125	Recovery	=	115.600%	
26) 1,2-Dichloroethane-d4	5.700	65	84865	5.851	ug/L	0.00
Spiked Amount	5.000	Range 70 - 130	Recovery	=	117.000%	
32) Benzene-d6	5.726	84	332143	5.213	ug/L	0.00
Spiked Amount	5.000	Range 70 - 125	Recovery	=	104.200%	
36) 1,2-Dichloropropane-d6	6.687	67	108957	5.526	ug/L	0.00
Spiked Amount	5.000	Range 60 - 140	Recovery	=	110.600%	
41) Toluene-d8	7.896	98	254286	4.411	ug/L	0.00
Spiked Amount	5.000	Range 70 - 130	Recovery	=	88.200%	
43) trans-1,3-Dichloroprop...	8.176	79	32868	4.575	ug/L	0.00
Spiked Amount	5.000	Range 55 - 130	Recovery	=	91.400%	
46) 2-Hexanone-d5	8.632	63	154908	50.875	ug/L	0.00
Spiked Amount	50.000	Range 45 - 130	Recovery	=	101.740%	
56) 1,1,2,2-Tetrachloroeth...	10.755	84	92046	5.384	ug/L	0.00
Spiked Amount	5.000	Range 65 - 120	Recovery	=	107.600%	
66) 1,2-Dichlorobenzene-d4	12.192	152	88130	5.981	ug/L	0.00
Spiked Amount	5.000	Range 80 - 120	Recovery	=	119.600%	
-----						
Target Compounds						Qvalue
13) Acetone	2.633	43	259436	107.843	ug/L	99
16) Methylene chloride	3.044	84	72844	3.694	ug/L	97
25) Chloroform	5.086	83	62161	2.178	ug/L	98
34) Trichloroethene	6.543	95	7118	0.409	ug/L	85
38) Bromodichloromethane	7.105	83	18999	0.862	ug/L	94
49) Dibromochloromethane	8.806	129	2115	0.139	ug/L	94
-----						

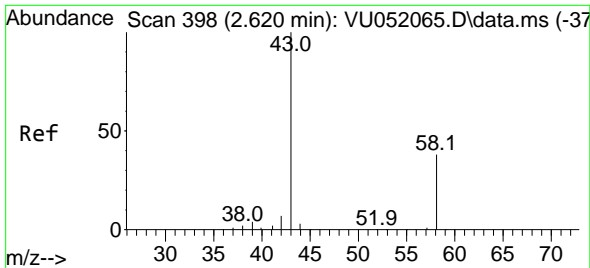
(#) = qualifier out of range (m) = manual integration (+) = signals summed

Data Path : Z:\voasrv\HPCHEM1\MSVOA\_U\Data\VU112222\  
 Data File : VU052073.D  
 Acq On : 23 Nov 2022 06:40  
 Operator : JC/MD  
 Sample : N5693-09  
 Misc : 25.0mL/MSVOA\_U/WATER  
 ALS Vial : 35 Sample Multiplier: 1

Instrument :  
 MSVOA\_U  
 ClientSampleId :  
 GBN90

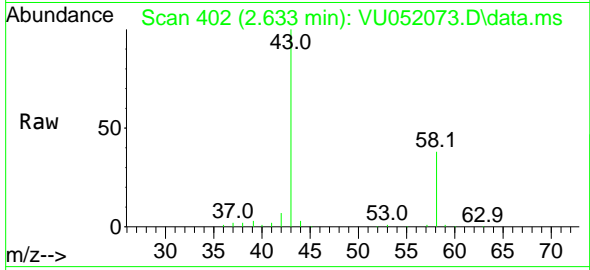
Quant Time: Nov 23 08:26:35 2022  
 Quant Method : Z:\voasrv\HPCHEM1\MSVOA\_U\Method\SFAMUTR111822WMA.M  
 Quant Title : TRACE VOA SFAM1.0  
 QLast Update : Sat Nov 19 21:39:41 2022  
 Response via : Initial Calibration



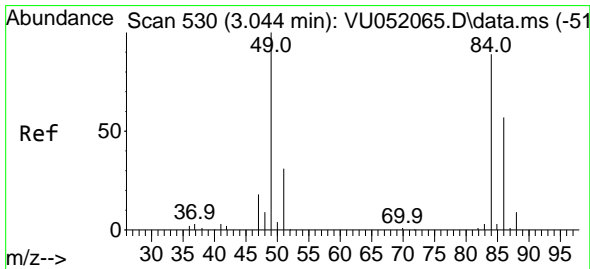
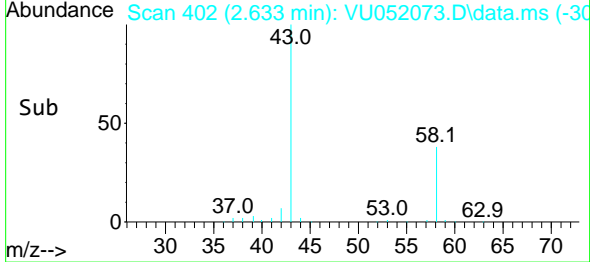
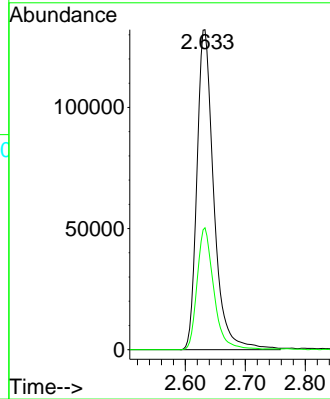


#13  
 Acetone  
 Concen: 107.843 ug/L  
 RT: 2.633 min Scan# 40  
 Delta R.T. 0.013 min  
 Lab File: VU052073.D  
 Acq: 23 Nov 2022 06:40

Instrument :  
 MSVOA\_U  
 ClientSampleId :  
 GBN90

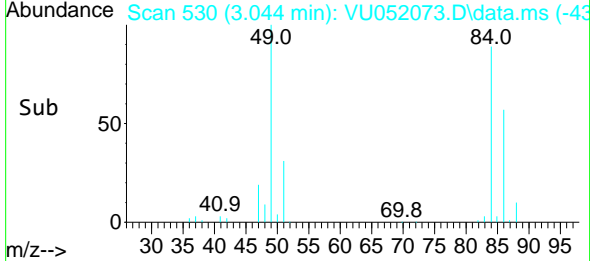
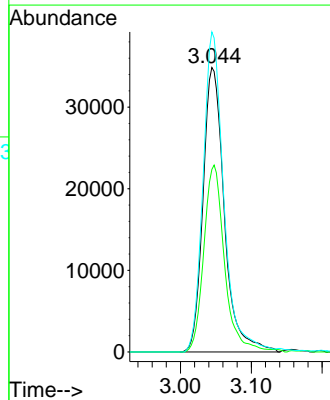
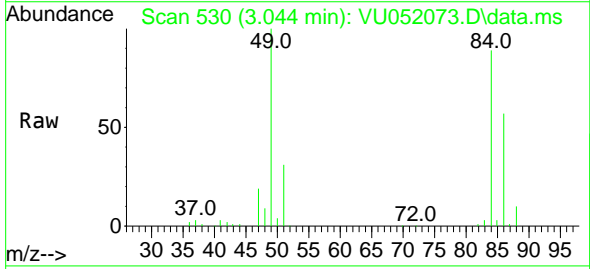


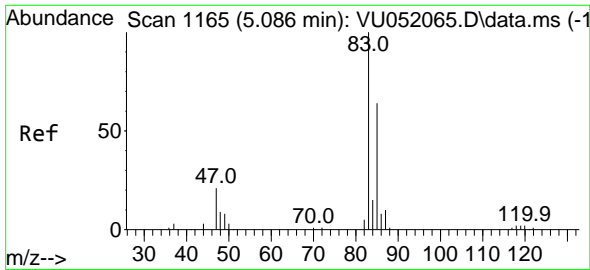
Tgt Ion: 43 Resp: 259436  
 Ion Ratio Lower Upper  
 43 100  
 58 37.6 0.0 76.0



#16  
 Methylene chloride  
 Concen: 3.694 ug/L  
 RT: 3.044 min Scan# 530  
 Delta R.T. 0.000 min  
 Lab File: VU052073.D  
 Acq: 23 Nov 2022 06:40

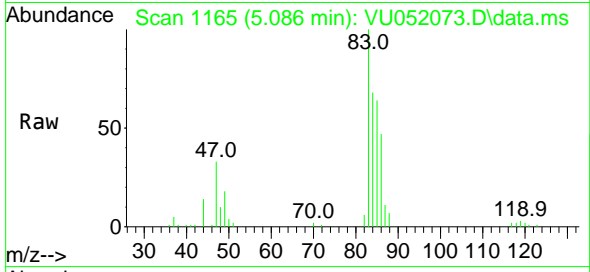
Tgt Ion: 84 Resp: 72844  
 Ion Ratio Lower Upper  
 84 100  
 86 64.2 43.8 81.4  
 49 112.5 75.9 141.1



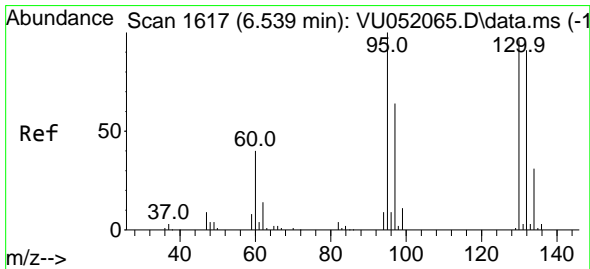
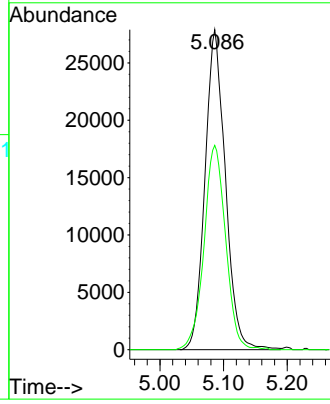
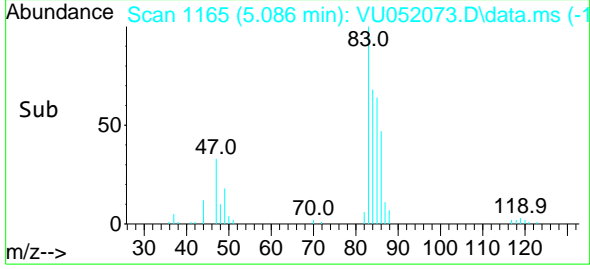


#25  
 Chloroform  
 Concen: 2.178 ug/L  
 RT: 5.086 min Scan# 1165  
 Delta R.T. 0.000 min  
 Lab File: VU052073.D  
 Acq: 23 Nov 2022 06:40

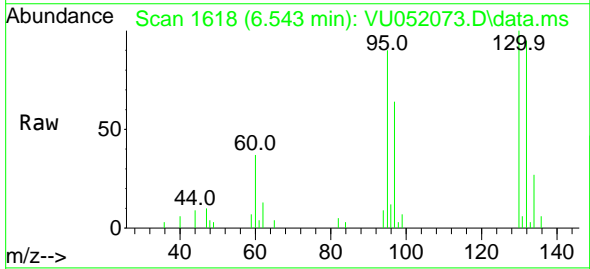
Instrument : MSVOA\_U  
 ClientSampleId : GBN90



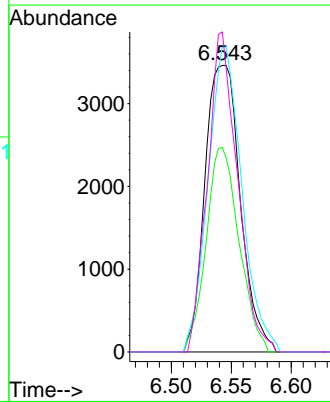
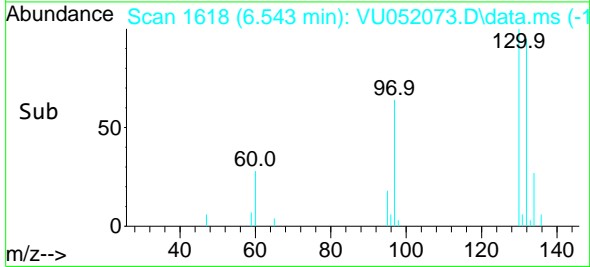
Tgt Ion: 83 Resp: 62161  
 Ion Ratio Lower Upper  
 83 100  
 85 63.8 43.8 81.4

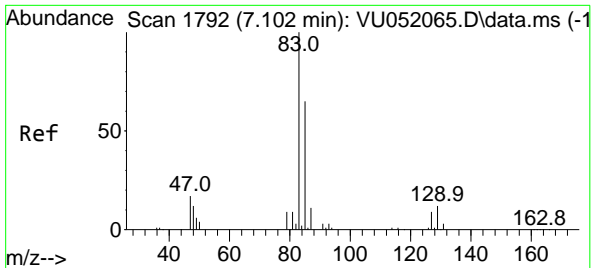


#34  
 Trichloroethene  
 Concen: 0.409 ug/L  
 RT: 6.543 min Scan# 1618  
 Delta R.T. 0.003 min  
 Lab File: VU052073.D  
 Acq: 23 Nov 2022 06:40



Tgt Ion: 95 Resp: 7118  
 Ion Ratio Lower Upper  
 95 100  
 97 71.3 43.7 81.1  
 132 106.3 64.3 119.3  
 130 111.6 67.3 124.9

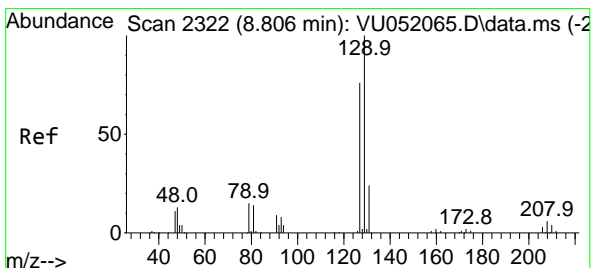
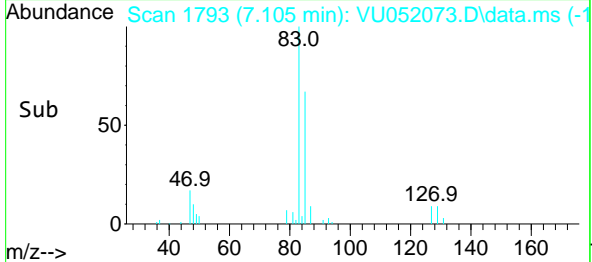
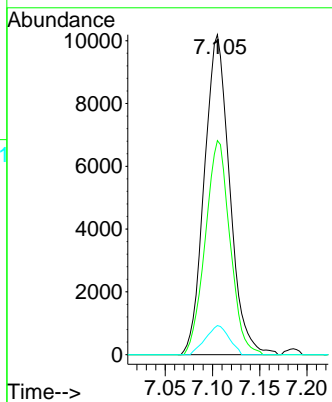
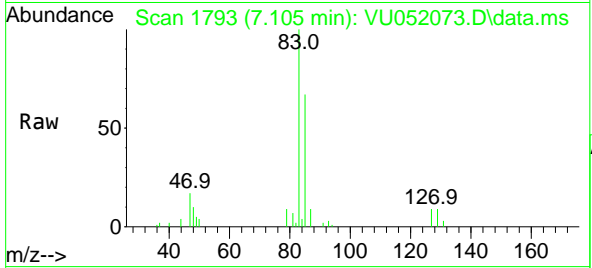




#38  
 Bromodichloromethane  
 Concen: 0.862 ug/L  
 RT: 7.105 min Scan# 1  
 Delta R.T. 0.003 min  
 Lab File: VU052073.D  
 Acq: 23 Nov 2022 06:40

Instrument :  
 MSVOA\_U  
 ClientSampleId :  
 GBN90

Tgt Ion	Resp	Lower	Upper
83	18999		
85	66.9	43.5	80.9
127	9.1	6.8	10.2



#49  
 Dibromochloromethane  
 Concen: 0.139 ug/L  
 RT: 8.806 min Scan# 2322  
 Delta R.T. 0.000 min  
 Lab File: VU052073.D  
 Acq: 23 Nov 2022 06:40

Tgt Ion	Resp	Lower	Upper
129	2115		
127	80.2	52.8	98.2

