

Data Path : Z:\VOASRV\HPCHEM1\MSVOA U\DATA\VU010220\
 Data File : VU036389.D
 Acq On : 02 Jan 2020 12:34
 Operator : JC/MD
 Sample : VU0102WBL01
 Misc : 25.0mL/MSVOA U/WATER
 ALS Vial : 1 Sample Multiplier: 1

Instrument :
 MSVOA_U
 ClientSampleId :
 VBLK11

Quant Time: Jan 03 00:52:04 2020
 Quant Method : Z:\VOASRV\HPCHEM1\MSVOA_U\METHOD\SOMUTR122819WMA.M
 Quant Title : TRACE VOA SOM01.0
 QLast Update : Fri Jan 03 00:45:06 2020
 Response via : Initial Calibration

Internal Standards	R.T.	QIon	Response	Conc	Units	Dev(Min)
1) 1,4-Difluorobenzene	6.29	114	298982	5.00	ug/L	0.00
28) Chlorobenzene-d5	9.45	117	287927	5.00	ug/L	0.00
60) 1,4-Dichlorobenzene-d4	11.83	152	120610	5.00	ug/L	0.00

System Monitoring Compounds

4) Vinyl Chloride-d3	1.61	65	80316	3.70	ug/L	0.00
Spiked Amount	5.000	Range	40 - 130	Recovery	=	74.00%
7) Chloroethane-d5	1.93	69	78961	4.01	ug/L	0.00
Spiked Amount	5.000	Range	65 - 130	Recovery	=	80.20%
11) 1,1-Dichloroethene-d2	2.59	63	125756	3.16	ug/L	0.00
Spiked Amount	5.000	Range	60 - 125	Recovery	=	63.20%
20) 2-Butanone-d5	4.69	46	231838	41.84	ug/L	0.00
Spiked Amount	50.000	Range	40 - 130	Recovery	=	83.68%
24) Chloroform-d	5.11	84	184028	4.23	ug/L	0.00
Spiked Amount	5.000	Range	70 - 125	Recovery	=	84.60%
26) 1,2-Dichloroethane-d4	5.75	65	106222	4.57	ug/L	0.00
Spiked Amount	5.000	Range	70 - 130	Recovery	=	91.40%
32) Benzene-d6	5.77	84	358540	4.31	ug/L	0.00
Spiked Amount	5.000	Range	70 - 125	Recovery	=	86.20%
36) 1,2-Dichloropropane-d6	6.73	67	117971	4.43	ug/L	0.00
Spiked Amount	5.000	Range	60 - 140	Recovery	=	88.60%
41) Toluene-d8	7.93	98	329802	4.22	ug/L	0.00
Spiked Amount	5.000	Range	70 - 130	Recovery	=	84.40%
43) trans-1,3-Dichloropropene-	8.21	79	53587	4.35	ug/L	0.00
Spiked Amount	5.000	Range	55 - 130	Recovery	=	87.00%
46) 2-Hexanone-d5	8.68	63	250874	47.45	ug/L	0.00
Spiked Amount	50.000	Range	45 - 130	Recovery	=	94.90%
57) 1,1,2,2-Tetrachloroethane-	10.78	84	103124	4.46	ug/L	0.00
Spiked Amount	5.000	Range	65 - 120	Recovery	=	89.20%
64) 1,2-Dichlorobenzene-d4	12.22	152	113635	4.42	ug/L	0.00
Spiked Amount	5.000	Range	80 - 120	Recovery	=	88.40%

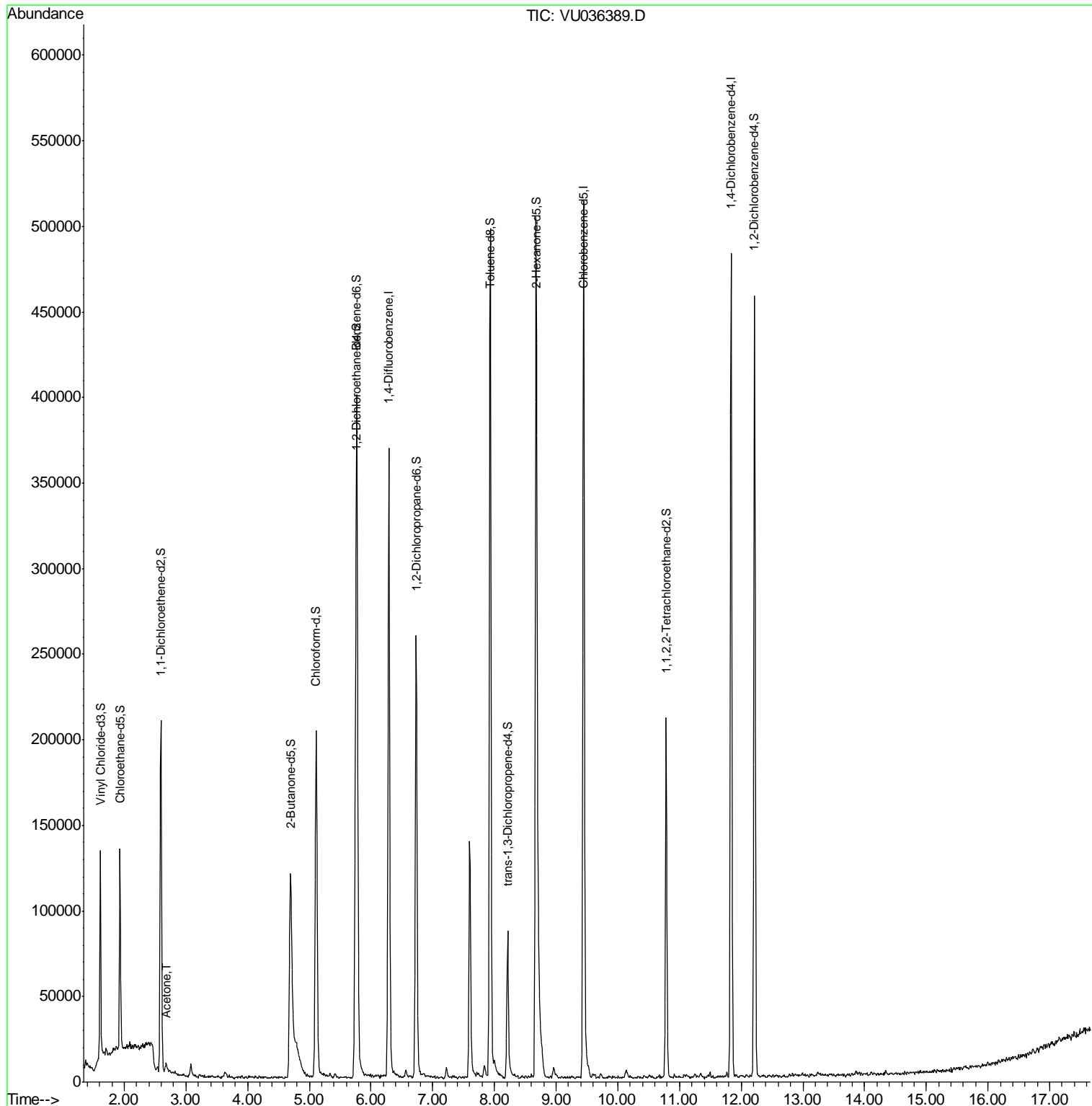
Target Compounds					Ovalue
13) Acetone	2.68	43	8760	2.454 ug/L	84

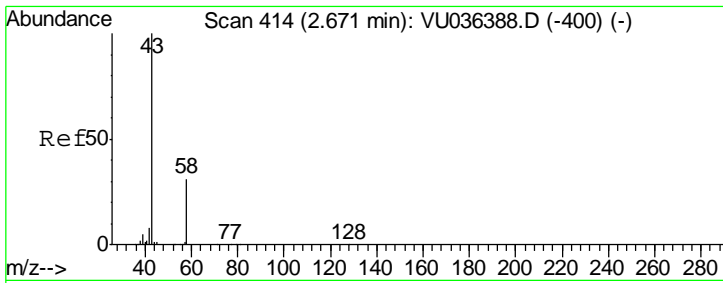
(#) = qualifier out of range (m) = manual integration (+) = signals summed

Data Path : Z:\VOASRV\HPCHEM1\MSVOA U\DATA\VU010220\
 Data File : VU036389.D
 Acq On : 02 Jan 2020 12:34
 Operator : JC/MD
 Sample : VU0102WBL01
 Misc : 25.0mL/MSVOA U/WATER
 ALS Vial : 1 Sample Multiplier: 1

Instrument :
 MSVOA_U
 ClientSampled :
 VBLK11

Quant Time: Jan 03 00:52:04 2020
 Quant Method : Z:\VOASRV\HPCHEM1\MSVOA_U\METHOD\SOMUTR122819WMA.M
 Quant Title : TRACE VOA SOM01.0
 QLast Update : Fri Jan 03 00:45:06 2020
 Response via : Initial Calibration





#13
 Acetone
 Concen: 2.454 ug/L
 RT: 2.68 min Scan# 417
 Delta R.T. 0.01 min
 Lab File: VU036389.D
 Acq: 02 Jan 2020 12:34

Instrument :
 MSVOA_U
ClientSampled :
 VBLK11

Tot Ion: 43 Resp: 8760

Ion	Ratio	Lower	Upper
43	100		
58	36.7	0.0	57.0

