

Data Path : Z:\voasrv\HPCHEM1\MSVOA_U\Data\VU011025\
 Data File : VU062678.D
 Acq On : 10 Jan 2025 12:34
 Operator : MD/SY
 Sample : Q1058-05
 Misc : 25mL/MSVOA_U/WATER
 ALS Vial : 8 Sample Multiplier: 1

Instrument :
 MSVOA_U
 ClientSampleId :

Quant Time: Jan 10 22:43:54 2025
 Quant Method : Z:\voasrv\HPCHEM1\MSVOA_U\Method\SFAMUTR010225WMA.M
 Quant Title : TRACE VOA SFAM1.0
 QLast Update : Fri Jan 10 22:42:03 2025
 Response via : Initial Calibration

Compound	R.T.	QIon	Response	Conc	Units	Dev(Min)

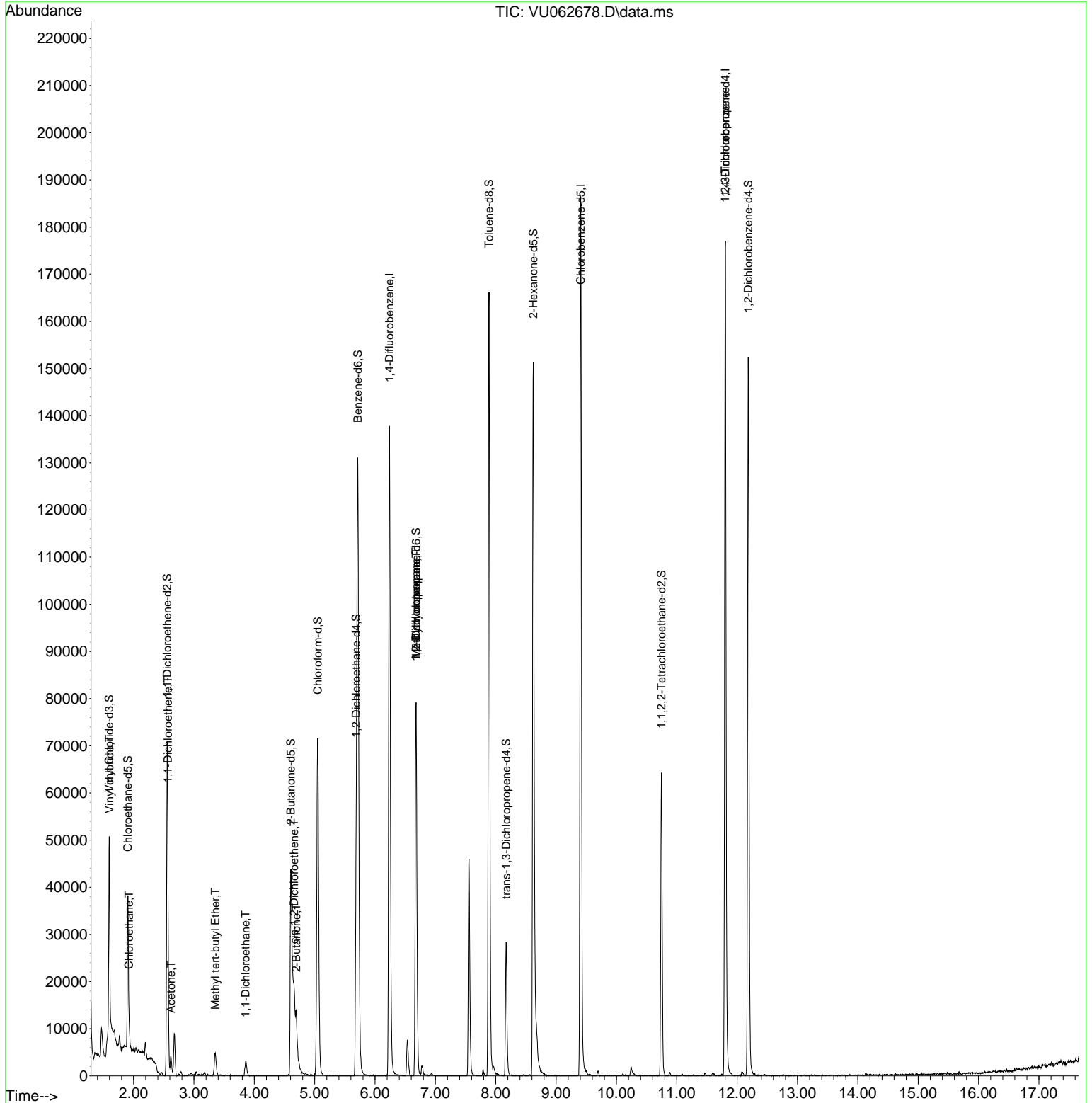
Internal Standards						
1) 1,4-Difluorobenzene	6.239	114	115540	5.000	ug/L	0.00
28) Chlorobenzene-d5	9.409	117	105409	5.000	ug/L	0.00
58) 1,4-Dichlorobenzene-d4	11.804	152	50810	5.000	ug/L	0.00
System Monitoring Compounds						
4) Vinyl Chloride-d3	1.596	65	25155	3.931	ug/L	0.00
Spiked Amount	5.000	Range 40 - 130	Recovery	=	78.600%	
7) Chloroethane-d5	1.904	69	22478	4.367	ug/L	0.00
Spiked Amount	5.000	Range 65 - 130	Recovery	=	87.400%	
11) 1,1-Dichloroethene-d2	2.557	65	13349	4.027	ug/L	0.00
Spiked Amount	5.000	Range 60 - 125	Recovery	=	80.600%	
20) 2-Butanone-d5	4.605	46	62797	48.016	ug/L	0.00
Spiked Amount	50.000	Range 40 - 130	Recovery	=	96.040%	
24) Chloroform-d	5.049	84	70723	4.492	ug/L	0.00
Spiked Amount	5.000	Range 70 - 125	Recovery	=	89.800%	
26) 1,2-Dichloroethane-d4	5.689	65	41535	4.864	ug/L	0.00
Spiked Amount	5.000	Range 70 - 130	Recovery	=	97.200%	
32) Benzene-d6	5.714	84	122753	4.764	ug/L	0.00
Spiked Amount	5.000	Range 70 - 125	Recovery	=	95.200%	
36) 1,2-Dichloropropane-d6	6.679	67	34591	4.842	ug/L	0.00
Spiked Amount	5.000	Range 60 - 140	Recovery	=	96.800%	
41) Toluene-d8	7.888	98	115479	4.600	ug/L	0.00
Spiked Amount	5.000	Range 70 - 130	Recovery	=	92.000%	
43) trans-1,3-Dichloroprop...	8.174	79	17216	4.834	ug/L	0.00
Spiked Amount	5.000	Range 55 - 130	Recovery	=	96.600%	
46) 2-Hexanone-d5	8.621	63	52217	46.622	ug/L	0.00
Spiked Amount	50.000	Range 45 - 130	Recovery	=	93.240%	
56) 1,1,2,2-Tetrachloroeth...	10.746	84	31136	5.204	ug/L	0.00
Spiked Amount	5.000	Range 65 - 120	Recovery	=	104.000%	
66) 1,2-Dichlorobenzene-d4	12.184	152	42548	5.033	ug/L	0.00
Spiked Amount	5.000	Range 80 - 120	Recovery	=	100.600%	
Target Compounds						
						Qvalue
5) Vinyl chloride	1.599	62	4057	0.488	ug/L #	1
8) Chloroethane	1.924	64	3749	0.750	ug/L #	74
12) 1,1-Dichloroethene	2.567	96	1558	0.217	ug/L #	1
13) Acetone	2.618	43	4956	4.784	ug/L	93
17) Methyl tert-butyl Ether	3.354	73	5416	0.275	ug/L	100
19) 1,1-Dichloroethane	3.856	63	3995	0.291	ug/L	93
21) 2-Butanone	4.695	43	17203	12.468	ug/L	98
22) cis-1,2-Dichloroethene	4.660	96	7788	0.931	ug/L	99
35) Methylcyclohexane	6.679	83	9514	0.747	ug/L #	21
37) 1,2-Dichloropropane	6.676	63	4227	0.592	ug/L #	85
61) 1,2,3-Trichloropropane	11.801	75	4983	1.106	ug/L #	61

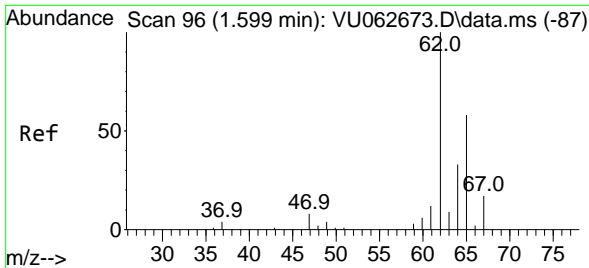
(#) = qualifier out of range (m) = manual integration (+) = signals summed

Data Path : Z:\voasrv\HPCHEM1\MSVOA_U\Data\VU011025\
 Data File : VU062678.D
 Acq On : 10 Jan 2025 12:34
 Operator : MD/SY
 Sample : Q1058-05
 Misc : 25mL/MSVOA_U/WATER
 ALS Vial : 8 Sample Multiplier: 1

Instrument :
 MSVOA_U
 ClientSampleId :

Quant Time: Jan 10 22:43:54 2025
 Quant Method : Z:\voasrv\HPCHEM1\MSVOA_U\Method\SFAMUTR010225WMA.M
 Quant Title : TRACE VOA SFAM1.0
 QLast Update : Fri Jan 10 22:42:03 2025
 Response via : Initial Calibration

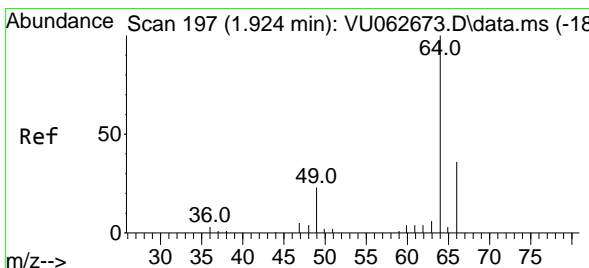
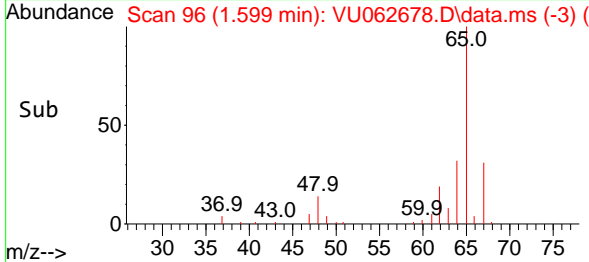
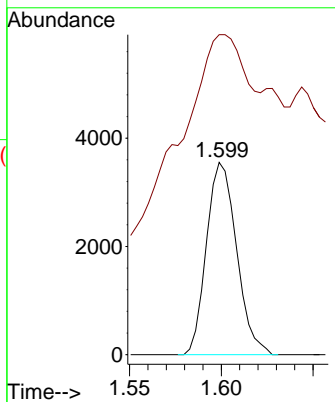
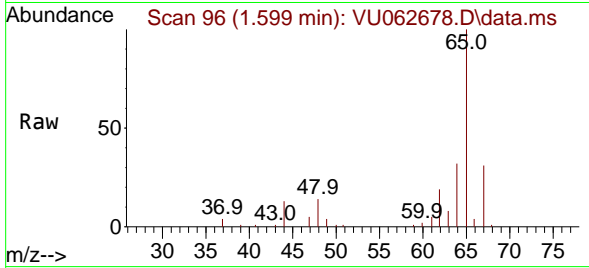




#5
 Vinyl chloride
 Concen: 0.488 ug/L
 RT: 1.599 min Scan# 90
 Delta R.T. 0.000 min
 Lab File: VU062678.D
 Acq: 10 Jan 2025 12:34

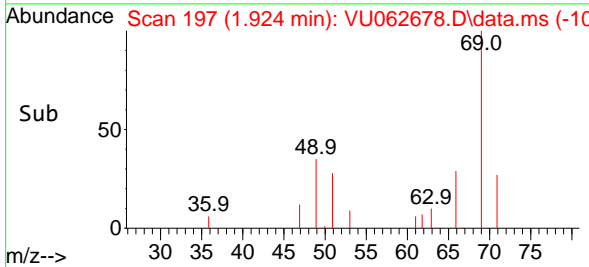
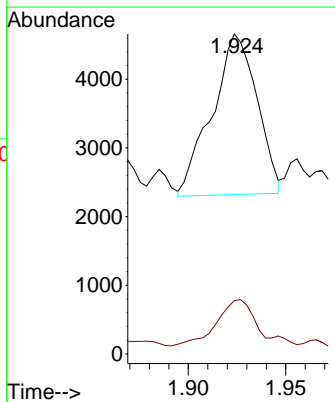
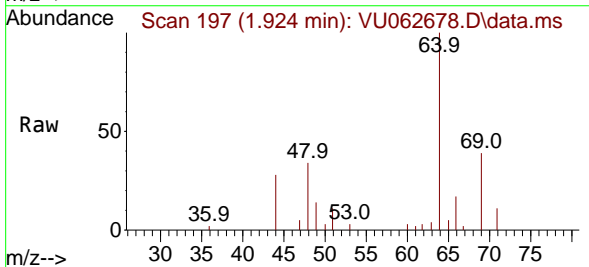
Instrument :
 MSVOA_U
 ClientSampleId :

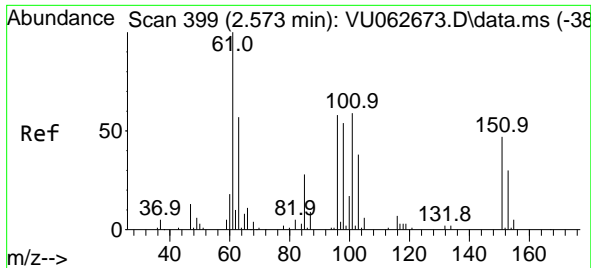
Tgt Ion: 62 Resp: 4057
 Ion Ratio Lower Upper
 62 100
 64 166.3 23.4 43.4#



#8
 Chloroethane
 Concen: 0.750 ug/L
 RT: 1.924 min Scan# 197
 Delta R.T. 0.000 min
 Lab File: VU062678.D
 Acq: 10 Jan 2025 12:34

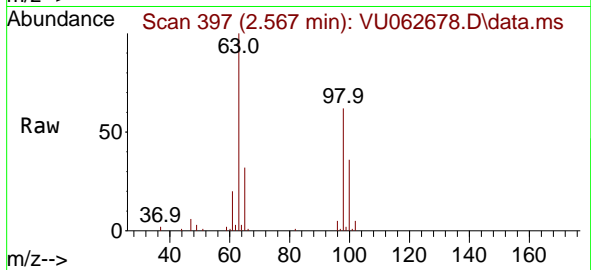
Tgt Ion: 64 Resp: 3749
 Ion Ratio Lower Upper
 64 100
 66 16.7 21.6 40.2#



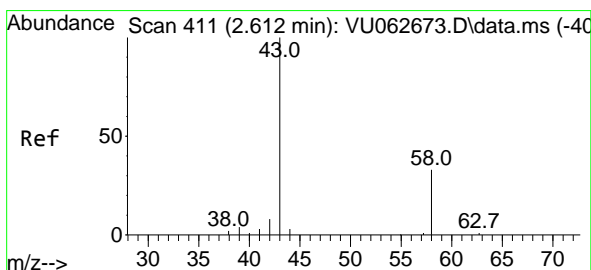
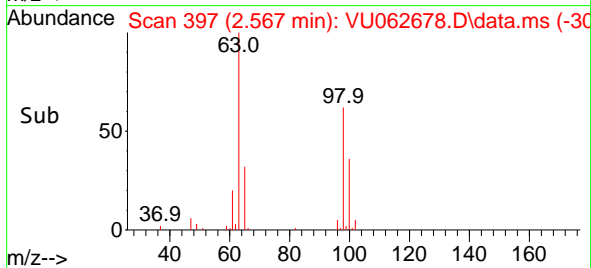
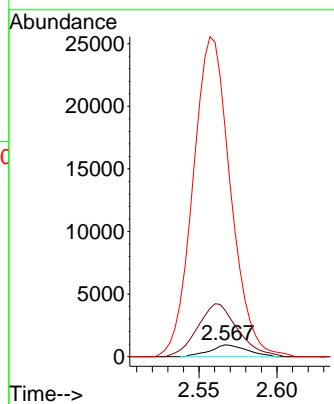


#12
 1,1-Dichloroethene
 Concen: 0.217 ug/L
 RT: 2.567 min Scan# 397
 Delta R.T. -0.006 min
 Lab File: VU062678.D
 Acq: 10 Jan 2025 12:34

Instrument : MSVOA_U
 ClientSampleId :

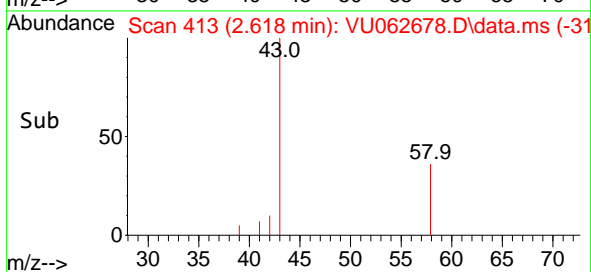
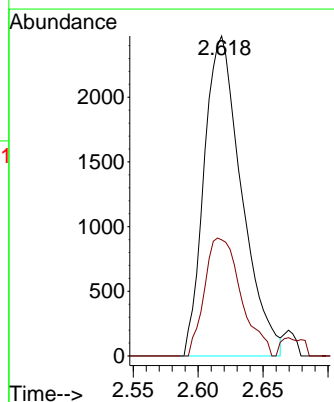
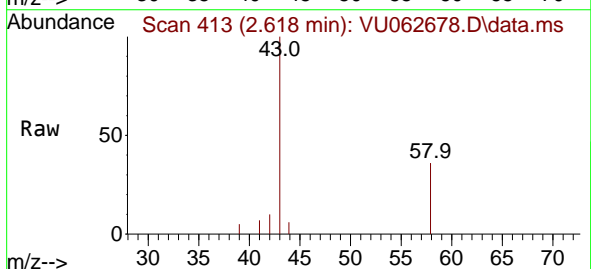


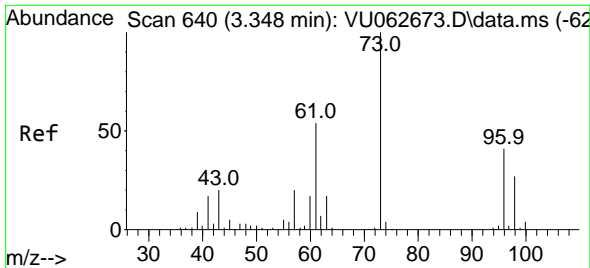
Tgt Ion: 96 Resp: 1558
 Ion Ratio Lower Upper
 96 100
 61 395.3 120.4 223.6#
 63 1944.8 82.3 152.9#



#13
 Acetone
 Concen: 4.784 ug/L
 RT: 2.618 min Scan# 413
 Delta R.T. 0.006 min
 Lab File: VU062678.D
 Acq: 10 Jan 2025 12:34

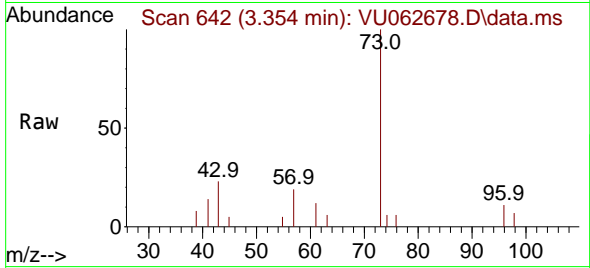
Tgt Ion: 43 Resp: 4956
 Ion Ratio Lower Upper
 43 100
 58 35.9 0.0 64.4





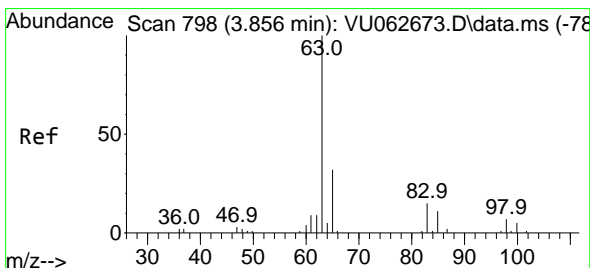
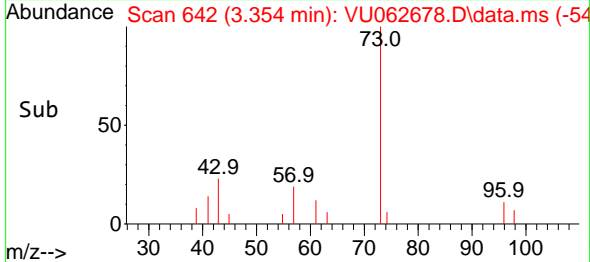
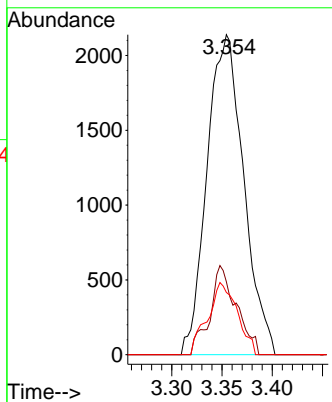
#17
 Methyl tert-butyl Ether
 Concen: 0.275 ug/L
 RT: 3.354 min Scan# 642
 Delta R.T. 0.006 min
 Lab File: VU062678.D
 Acq: 10 Jan 2025 12:34

Instrument :
 MSVOA_U
 ClientSampleId :



Tgt Ion: 73 Resp: 5416

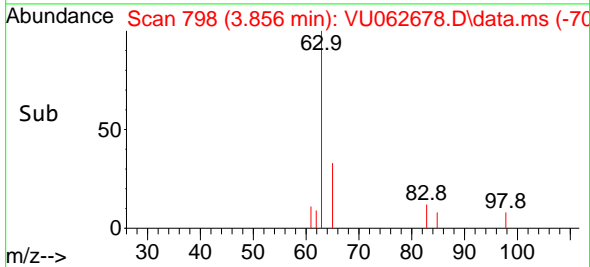
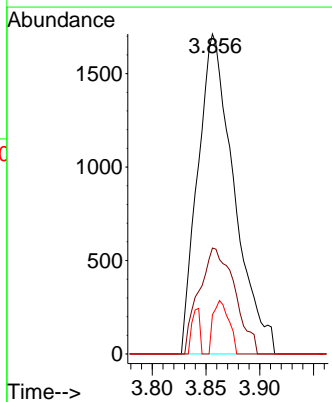
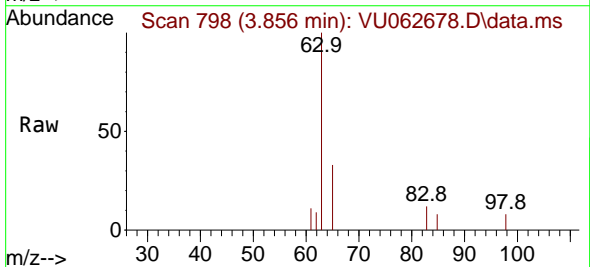
Ion	Ratio	Lower	Upper
73	100		
43	20.2	16.2	24.4
57	18.2	14.6	22.0

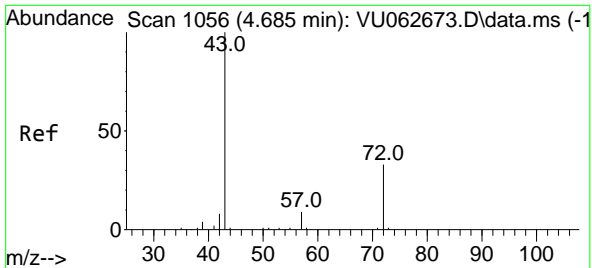


#19
 1,1-Dichloroethane
 Concen: 0.291 ug/L
 RT: 3.856 min Scan# 798
 Delta R.T. 0.000 min
 Lab File: VU062678.D
 Acq: 10 Jan 2025 12:34

Tgt Ion: 63 Resp: 3995

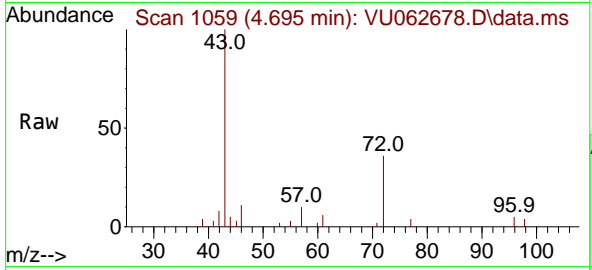
Ion	Ratio	Lower	Upper
63	100		
65	33.1	20.7	38.5
83	12.3	10.5	19.5



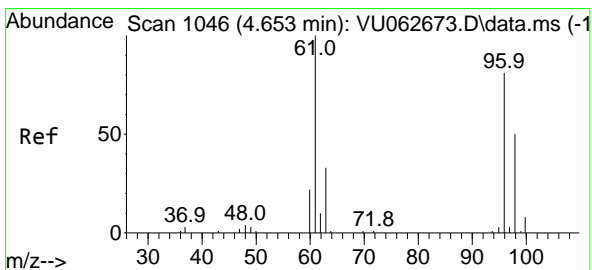
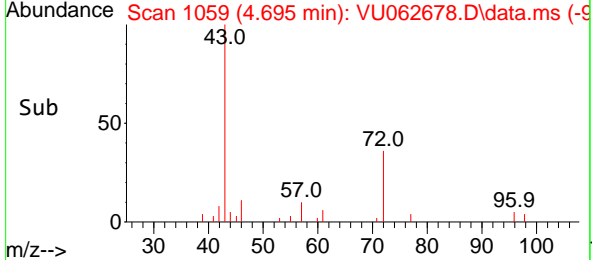
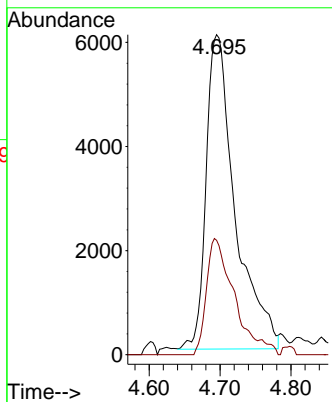


#21
 2-Butanone
 Concen: 12.468 ug/L
 RT: 4.695 min Scan# 1059
 Delta R.T. 0.010 min
 Lab File: VU062678.D
 Acq: 10 Jan 2025 12:34

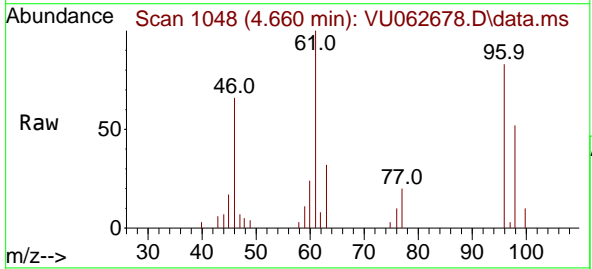
Instrument : MSVOA_U
 ClientSampleId :



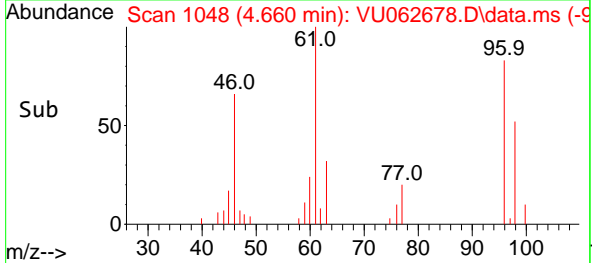
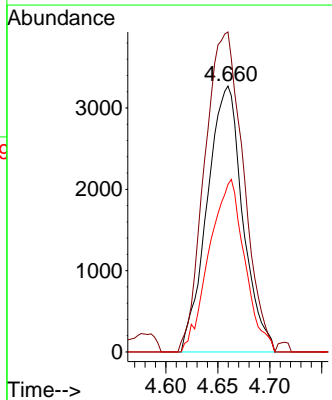
Tgt Ion: 43 Resp: 17203
 Ion Ratio Lower Upper
 43 100
 72 35.5 17.1 51.2

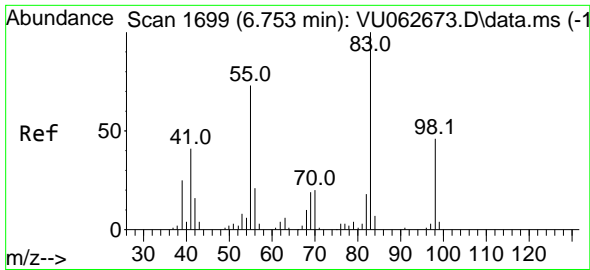


#22
 cis-1,2-Dichloroethene
 Concen: 0.931 ug/L
 RT: 4.660 min Scan# 1048
 Delta R.T. 0.006 min
 Lab File: VU062678.D
 Acq: 10 Jan 2025 12:34



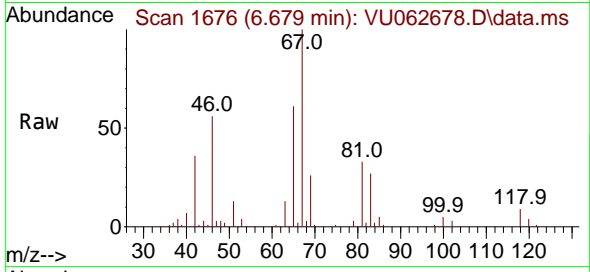
Tgt Ion: 96 Resp: 7788
 Ion Ratio Lower Upper
 96 100
 61 120.3 84.8 157.6
 98 63.0 43.1 80.1



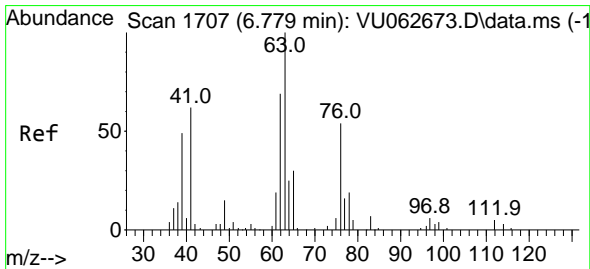
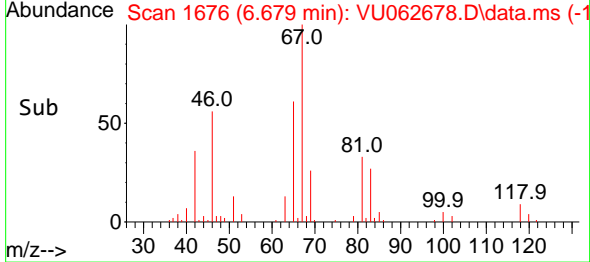
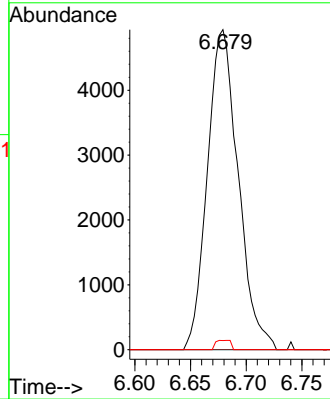


#35
 Methylcyclohexane
 Concen: 0.747 ug/L
 RT: 6.679 min Scan# 1676
 Delta R.T. -0.074 min
 Lab File: VU062678.D
 Acq: 10 Jan 2025 12:34

Instrument : MSVOA_U
 ClientSampleId :

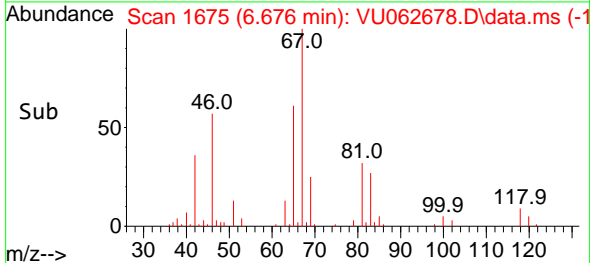
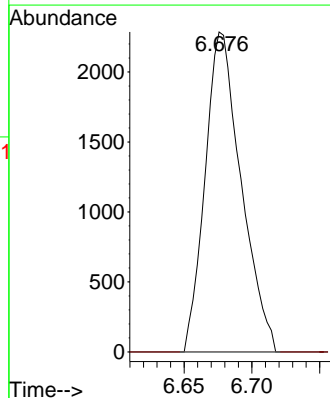
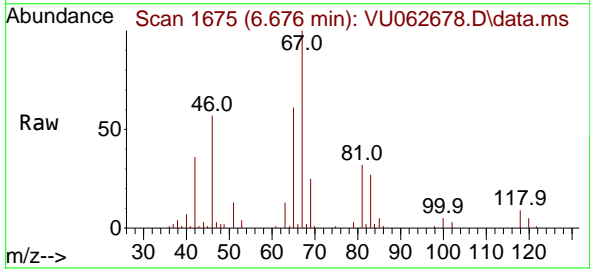


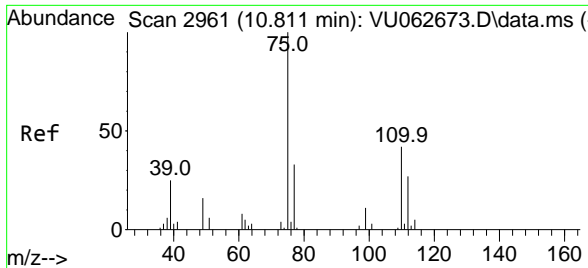
Tgt Ion: 83 Resp: 9514
 Ion Ratio Lower Upper
 83 100
 55 0.0 57.2 85.8#
 98 1.4 36.6 55.0#



#37
 1,2-Dichloropropane
 Concen: 0.592 ug/L
 RT: 6.676 min Scan# 1675
 Delta R.T. -0.103 min
 Lab File: VU062678.D
 Acq: 10 Jan 2025 12:34

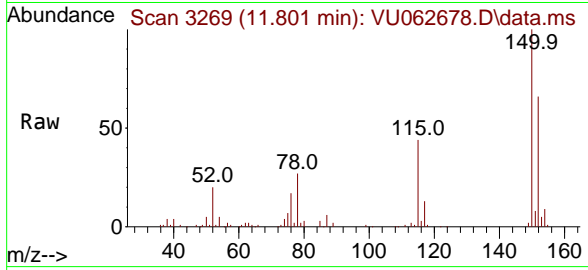
Tgt Ion: 63 Resp: 4227
 Ion Ratio Lower Upper
 63 100
 112 0.0 3.8 5.8#





#61
 1,2,3-Trichloropropane
 Concen: 1.106 ug/L
 RT: 11.801 min Scan# 31
 Delta R.T. 0.990 min
 Lab File: VU062678.D
 Acq: 10 Jan 2025 12:34

Instrument :
 MSVOA_U
 ClientSampleId :



Tgt Ion: 75 Resp: 4983

Ion	Ratio	Lower	Upper
75	100		
110	0.8	33.2	49.8#
77	36.2	25.9	38.9

