

Data Path : Z:\voasrv\HPCHEM1\MSVOA_U\Data\VU011222\
 Data File : VU046736.D
 Acq On : 12 Jan 2022 12:40
 Operator : SY/MD
 Sample : N1101-03
 Misc : 25.0mL/MSVOA_U/WATER
 ALS Vial : 5 Sample Multiplier: 1

Instrument :
 MSVOA_U
 ClientSampleId :
 BFXW6

Integration Parameters: rteint.p
 Integrator: RTE
 Smoothing : ON
 Sampling : 1
 Start Thrs : 0.1
 Stop Thrs : 0

Filtering: 5
 Min Area: 3 % of largest Peak
 Max Peaks: 100
 Peak Location: TOP

If leading or trailing edge < 100 prefer < Baseline drop else tangent >
 Peak separation: 5

Method : Z:\voasrv\HPCHEM1\MSVOA_U\Method\SFAMUTR122121WMA.M
 Title : TRACE VOA SFAM1.0

Signal : TIC: VU046736.D\data.ms

peak #	R.T. min	first scan	max scan	last scan	PK TY	peak height	corr. area	corr. % max.	% of total
1	1.363	3	7	20	rVB	19317	20284	2.58%	0.466%
2	1.604	72	82	94	rVB	35144	43176	5.50%	0.993%
3	1.919	172	180	197	rVB	25452	34901	4.44%	0.802%
4	2.578	369	385	401	rBV2	74170	147122	18.73%	3.382%
5	3.189	562	575	594	rBV	8926	21454	2.73%	0.493%
6	3.369	616	631	650	rVB3	11931	29153	3.71%	0.670%
7	4.658	1011	1032	1078	rBV2	42380	201329	25.63%	4.629%
8	5.070	1142	1160	1180	rBV2	57539	137697	17.53%	3.166%
9	5.321	1224	1238	1254	rBV	31840	68786	8.76%	1.581%
10	5.729	1345	1365	1390	rBV2	105224	281970	35.89%	6.483%
11	6.253	1514	1528	1557	rBV	119964	225749	28.74%	5.190%
12	6.546	1608	1619	1636	rBB2	26149	47056	5.99%	1.082%
13	6.694	1652	1665	1687	rBV	69388	134047	17.06%	3.082%
14	6.883	1713	1724	1740	rBV4	7718	17554	2.23%	0.404%
15	7.568	1926	1937	1955	rBB2	35335	60899	7.75%	1.400%
16	7.899	2028	2040	2056	rBV	126955	217469	27.68%	5.000%
17	8.182	2118	2128	2140	rBV	22913	37475	4.77%	0.862%
18	8.555	2231	2244	2258	rBV	470413	785608	100.00%	18.061%
19	8.639	2259	2270	2304	rVV	255544	476043	60.60%	10.944%
20	8.790	2306	2317	2348	rVB2	74183	138248	17.60%	3.178%
21	9.420	2499	2513	2536	rBV	179918	302081	38.45%	6.945%
22	10.346	2792	2801	2816	rVB2	17801	27947	3.56%	0.643%
23	10.758	2918	2929	2945	rVB	76906	121430	15.46%	2.792%
24	10.893	2961	2971	2981	rVB	6823	10965	1.40%	0.252%
25	11.690	3206	3219	3232	rBV2	37028	56577	7.20%	1.301%
26	11.812	3245	3257	3272	rBV	214761	340223	43.31%	7.822%
27	12.063	3328	3335	3348	rBV3	5647	8796	1.12%	0.202%
28	12.195	3364	3376	3390	rBV	143252	231437	29.46%	5.321%
29	12.890	3581	3592	3606	rBV	78083	115765	14.74%	2.661%
30	14.735	4159	4166	4176	rVB3	6631	8459	1.08%	0.194%

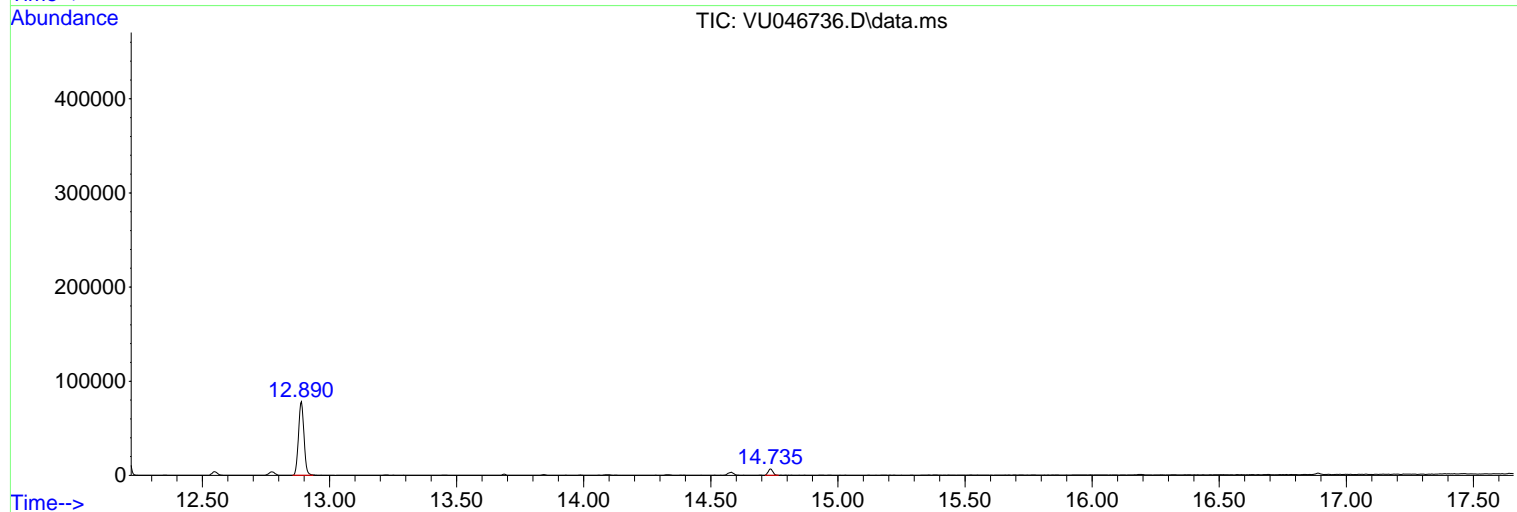
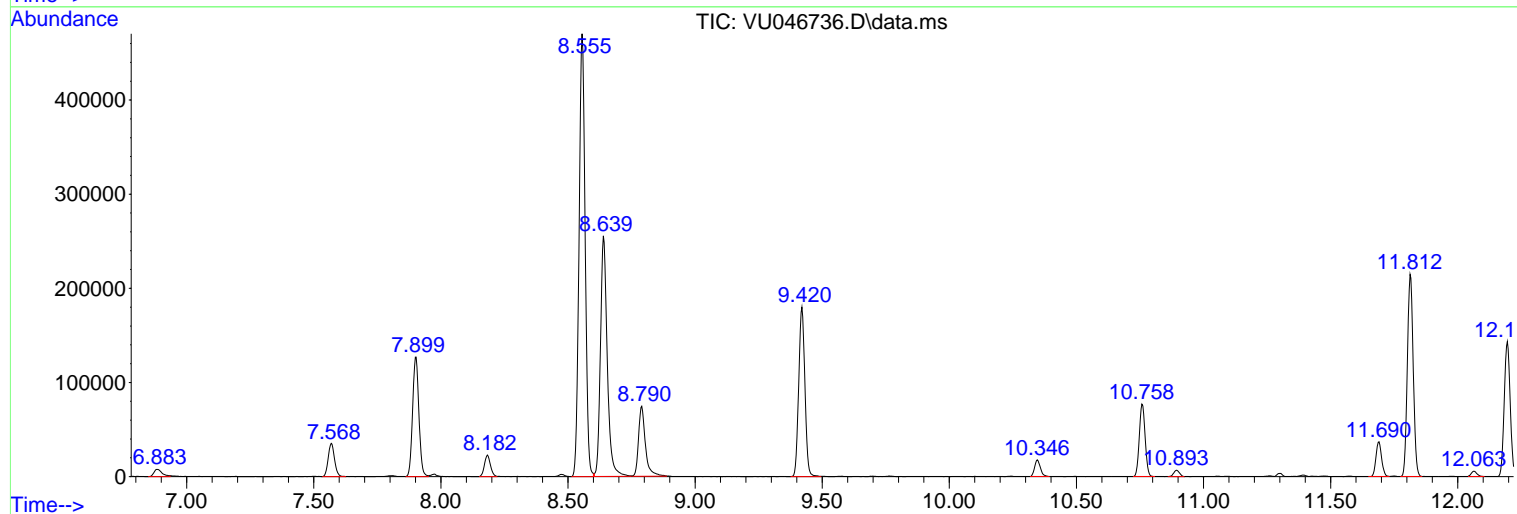
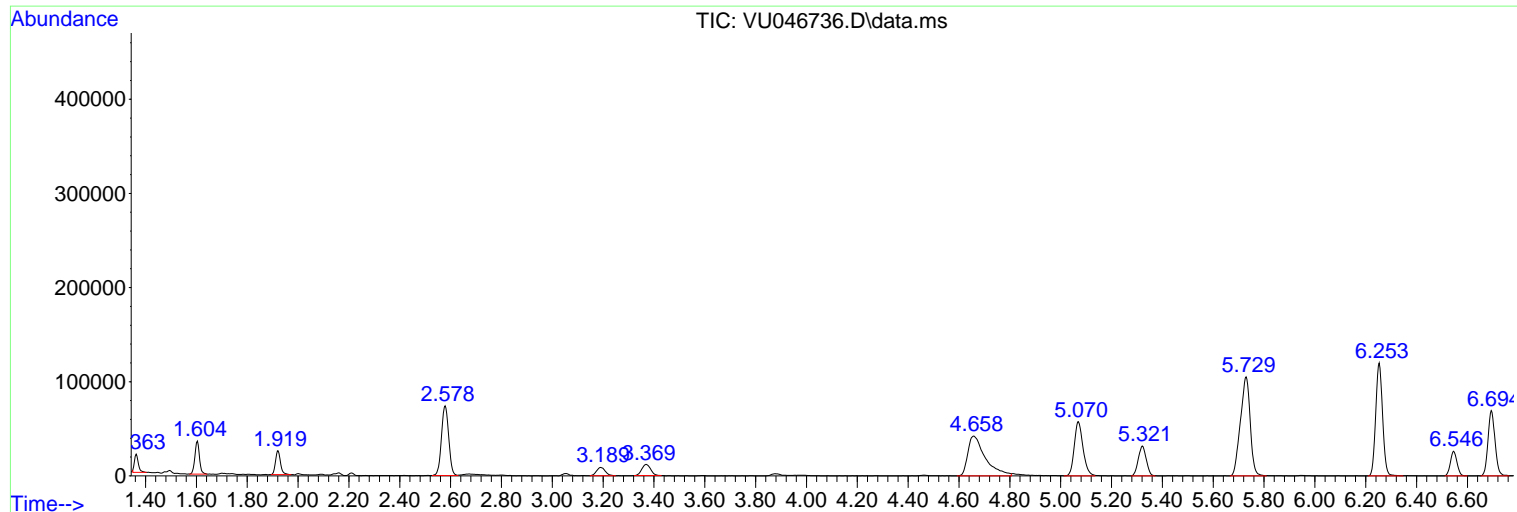
Sum of corrected areas: 4349700

Data Path : Z:\voasrv\HPCHEM1\MSVOA_U\Data\VU011222\
Data File : VU046736.D
Acq On : 12 Jan 2022 12:40
Operator : SY/MD
Sample : N1101-03
Misc : 25.0mL/MSVOA_U/WATER
ALS Vial : 5 Sample Multiplier: 1

Instrument :
MSVOA_U
ClientSampleId :
BFXW6

Quant Method : Z:\voasrv\HPCHEM1\MSVOA_U\Method\SFAMUTR122121WMA.M
Quant Title : TRACE VOA SFAM1.0

TIC Library : C:\Database\NIST20.L
TIC Integration Parameters: LSCINT.P



Data Path : Z:\voasrv\HPCHEM1\MSVOA_U\Data\VU011222\
 Data File : VU046736.D
 Acq On : 12 Jan 2022 12:40
 Operator : SY/MD
 Sample : N1101-03
 Misc : 25.0mL/MSVOA_U/WATER
 ALS Vial : 5 Sample Multiplier: 1

Instrument :
 MSVOA_U
 ClientSampleId :
 BFXW6

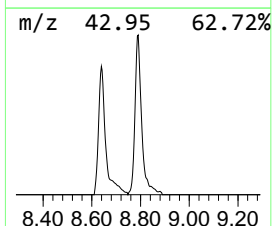
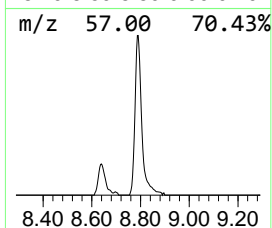
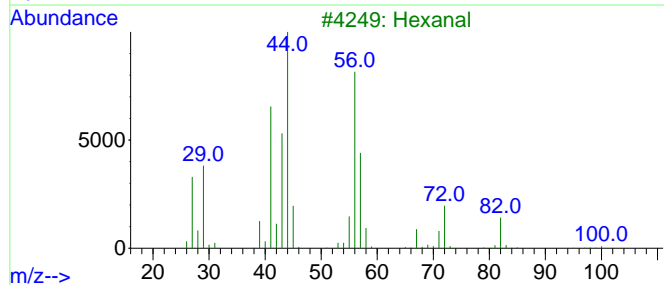
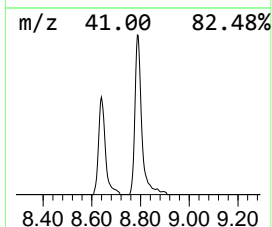
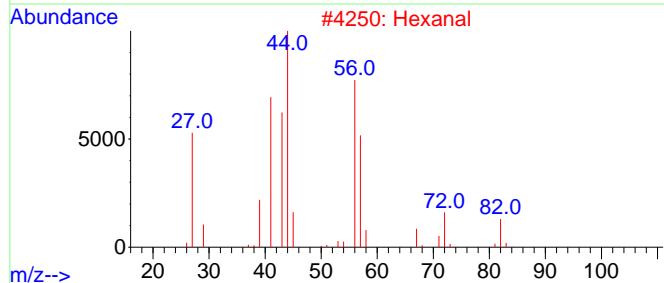
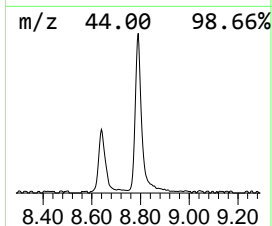
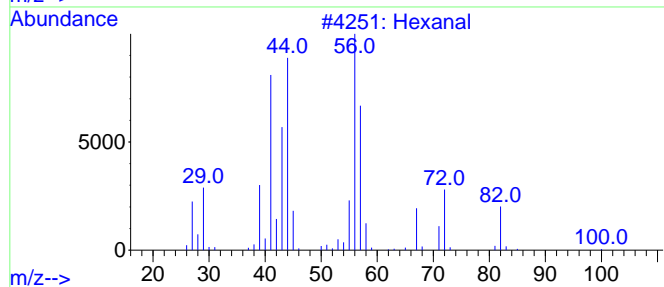
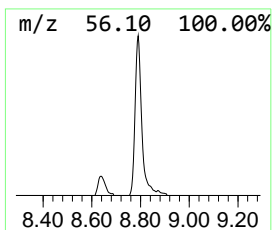
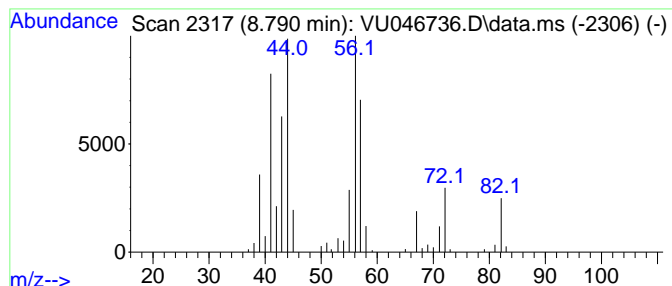
Quant Method : Z:\voasrv\HPCHEM1\MSVOA_U\Method\SFAMUTR122121WMA.M
 Quant Title : TRACE VOA SFAM1.0

TIC Library : C:\Database\NIST20.L
 TIC Integration Parameters: LSCINT.P

 Peak Number 2 Hexanal Concentration Rank 1

R.T.	EstConc	Area	Relative to ISTD	R.T.
8.790	2.29 ug/L	138248	Chlorobenzene-d5	9.420

Hit#	of	5	Tentative ID	MW	MolForm	CAS#	Qual
1	Hexanal			100	C6H12O	000066-25-1	90
2	Hexanal			100	C6H12O	000066-25-1	86
3	Hexanal			100	C6H12O	000066-25-1	86
4	Hexanal			100	C6H12O	000066-25-1	83
5	Hexanal			100	C6H12O	000066-25-1	83



Data Path : Z:\voasrv\HPCHEM1\MSVOA_U\Data\VU011222\
 Data File : VU046736.D
 Acq On : 12 Jan 2022 12:40
 Operator : SY/MD
 Sample : N1101-03
 Misc : 25.0mL/MSVOA_U/WATER
 ALS Vial : 5 Sample Multiplier: 1

Instrument :
 MSVOA_U
 ClientSampleId :
 BFXW6

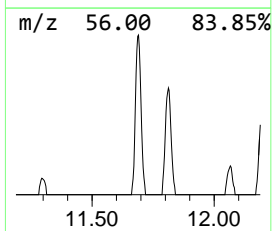
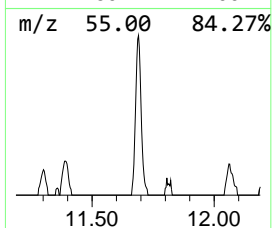
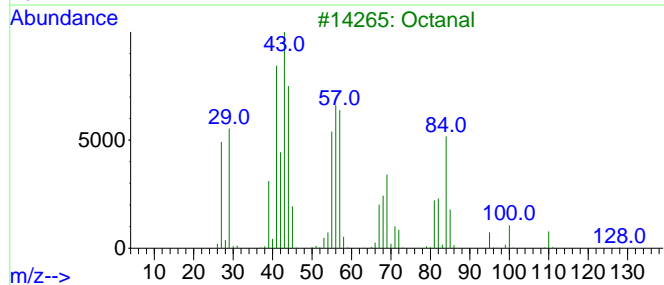
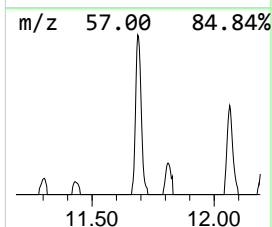
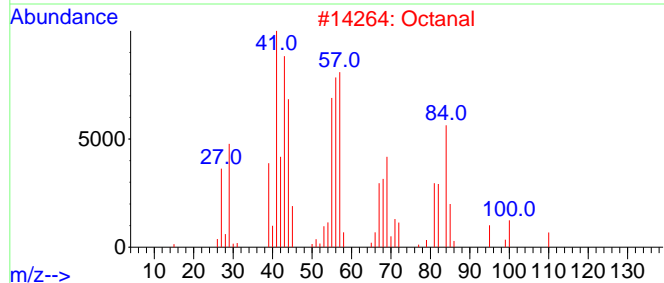
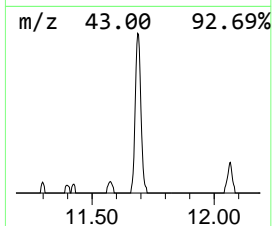
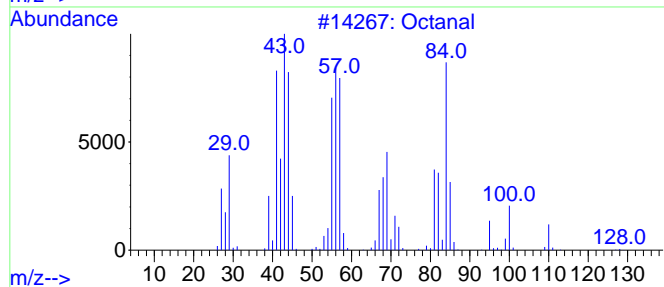
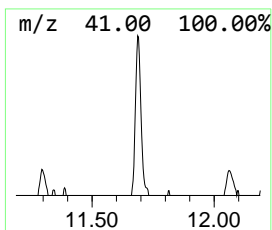
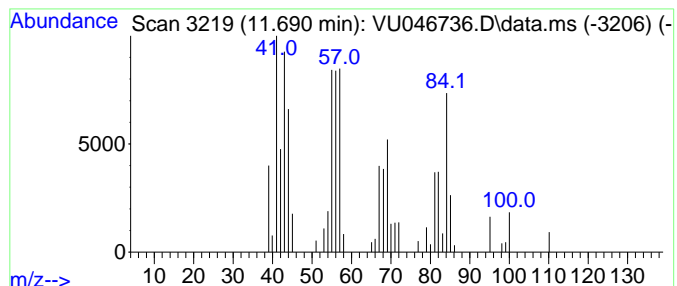
Quant Method : Z:\voasrv\HPCHEM1\MSVOA_U\Method\SFAMUTR122121WMA.M
 Quant Title : TRACE VOA SFAM1.0

TIC Library : C:\Database\NIST20.L
 TIC Integration Parameters: LSCINT.P

 Peak Number 3 Octanal Concentration Rank 4

R.T.	EstConc	Area	Relative to ISTD	R.T.
11.690	0.83 ug/L	56577	1,4-Dichlorobenzene-d4	11.812

Hit#	of	5	Tentative ID	MW	MolForm	CAS#	Qual
1	Octanal			128	C8H16O	000124-13-0	91
2	Octanal			128	C8H16O	000124-13-0	91
3	Octanal			128	C8H16O	000124-13-0	53
4	Octanal			128	C8H16O	000124-13-0	53
5	2-Amino-oxazole			84	C3H4N2O	004570-45-0	50



Data Path : Z:\voasrv\HPCHEM1\MSVOA_U\Data\VU011222\
 Data File : VU046736.D
 Acq On : 12 Jan 2022 12:40
 Operator : SY/MD
 Sample : N1101-03
 Misc : 25.0mL/MSVOA_U/WATER
 ALS Vial : 5 Sample Multiplier: 1

Instrument :
 MSVOA_U
 ClientSampleId :
 BFXW6

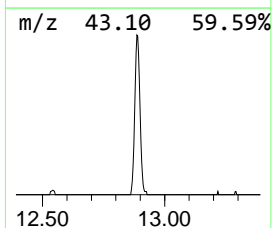
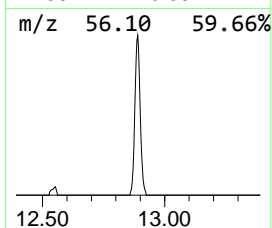
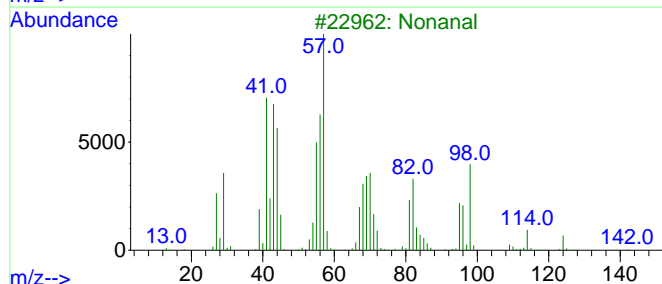
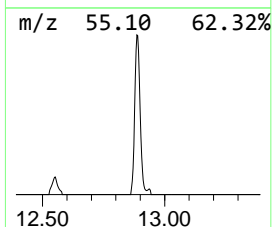
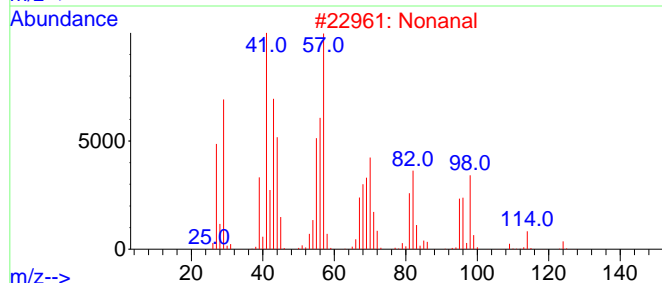
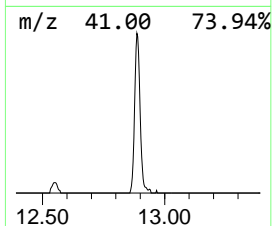
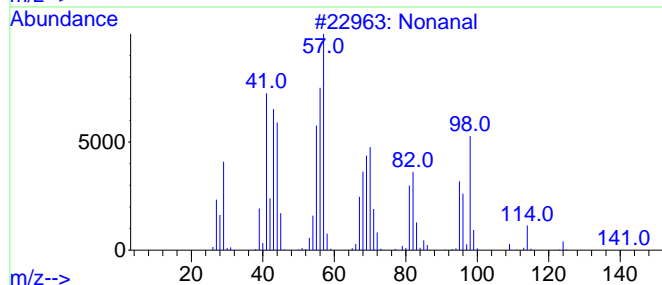
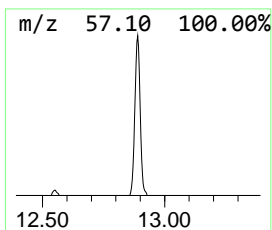
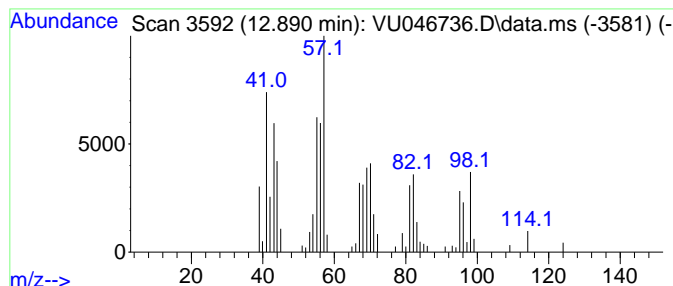
Quant Method : Z:\voasrv\HPCHEM1\MSVOA_U\Method\SFAMUTR122121WMA.M
 Quant Title : TRACE VOA SFAM1.0

TIC Library : C:\Database\NIST20.L
 TIC Integration Parameters: LSCINT.P

 Peak Number 4 Nonanal Concentration Rank 2

R.T.	EstConc	Area	Relative to ISTD	R.T.
12.890	1.70 ug/L	115765	1,4-Dichlorobenzene-d4	11.812

Hit#	of	5	Tentative ID	MW	MolForm	CAS#	Qual
1			Nonanal	142	C9H18O	000124-19-6	90
2			Nonanal	142	C9H18O	000124-19-6	87
3			Nonanal	142	C9H18O	000124-19-6	72
4			Cyclohexanol, 2-methyl-, trans-	114	C7H14O	007443-52-9	38
5			11-Hexadecen-1-ol, (Z)-	240	C16H32O	056683-54-6	35



Data Path : Z:\voasrv\HPCHEM1\MSVOA_U\Data\VU011222\
Data File : VU046736.D
Acq On : 12 Jan 2022 12:40
Operator : SY/MD
Sample : N1101-03
Misc : 25.0mL/MSVOA_U/WATER
ALS Vial : 5 Sample Multiplier: 1

Instrument :
MSVOA_U
ClientSampleId :
BFXW6

Quant Method : Z:\voasrv\HPCHEM1\MSVOA_U\Method\SFAMUTR122121WMA.M
Quant Title : TRACE VOA SFAM1.0

TIC Library : C:\Database\NIST20.L
TIC Integration Parameters: LSCINT.P

TIC Top Hit name	RT	EstConc	Units	Response	--Internal Standard--			
					#	RT	Resp	Conc
Hexanal	8.790	2.3	ug/L	138248	2	9.420	302081	5.0
Octanal	11.690	0.8	ug/L	56577	3	11.812	340223	5.0
Nonanal	12.890	1.7	ug/L	115765	3	11.812	340223	5.0