

Data Path : Z:\voasrv\HPCHEM1\MSVOA_U\Data\VU012424\
 Data File : VU057617.D
 Acq On : 24 Jan 2024 14:33
 Operator : MD/SY
 Sample : P1228-09
 Misc : 25.0mL/MSVOA_U/WATER
 ALS Vial : 9 Sample Multiplier: 1

Instrument :
 MSVOA_U
 ClientSampleId :

Quant Time: Jan 25 01:54:03 2024
 Quant Method : Z:\voasrv\HPCHEM1\MSVOA_U\Method\SFAMUTR012324WMA.M
 Quant Title : TRACE VOA SFAM1.0
 QLast Update : Thu Jan 25 01:52:13 2024
 Response via : Initial Calibration

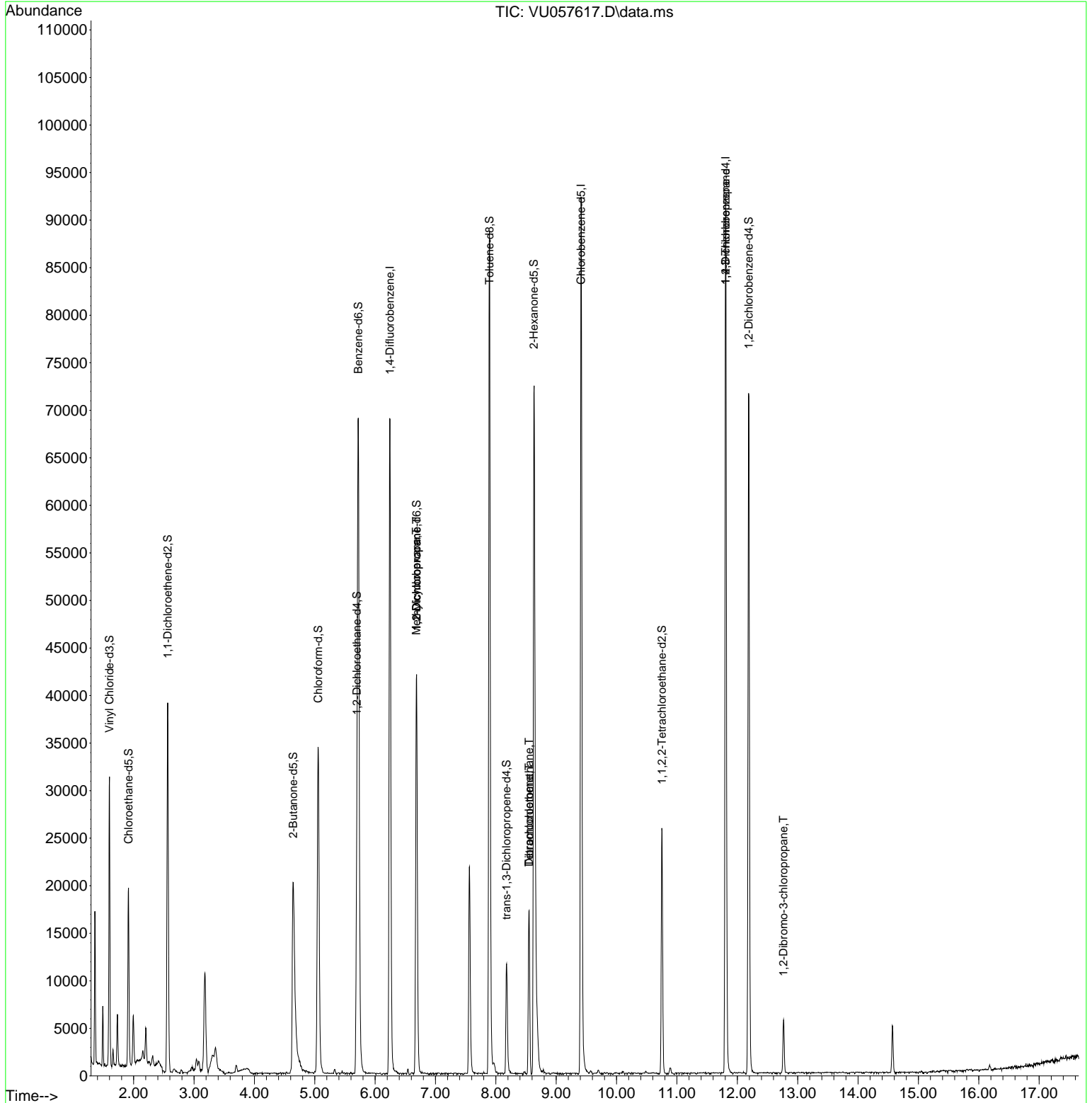
| Compound | R.T. | QIon | Response | Conc | Units | Dev(Min) |
|-------------------------------|--------|----------------|----------|--------|----------|----------|
| ----- | | | | | | |
| Internal Standards | | | | | | |
| 1) 1,4-Difluorobenzene | 6.245 | 114 | 58810 | 5.000 | ug/L | 0.00 |
| 28) Chlorobenzene-d5 | 9.412 | 117 | 52859 | 5.000 | ug/L | 0.00 |
| 58) 1,4-Dichlorobenzene-d4 | 11.807 | 152 | 24505 | 5.000 | ug/L | 0.00 |
| System Monitoring Compounds | | | | | | |
| 4) Vinyl Chloride-d3 | 1.599 | 65 | 15673 | 4.837 | ug/L | 0.00 |
| Spiked Amount | 5.000 | Range 40 - 130 | Recovery | = | 96.800% | |
| 7) Chloroethane-d5 | 1.914 | 69 | 13317 | 4.905 | ug/L | 0.00 |
| Spiked Amount | 5.000 | Range 65 - 130 | Recovery | = | 98.000% | |
| 11) 1,1-Dichloroethene-d2 | 2.563 | 65 | 7486 | 4.913 | ug/L | 0.00 |
| Spiked Amount | 5.000 | Range 60 - 125 | Recovery | = | 98.200% | |
| 20) 2-Butanone-d5 | 4.641 | 46 | 34382 | 56.247 | ug/L | 0.00 |
| Spiked Amount | 50.000 | Range 40 - 130 | Recovery | = | 112.500% | |
| 24) Chloroform-d | 5.055 | 84 | 32909 | 5.004 | ug/L | 0.00 |
| Spiked Amount | 5.000 | Range 70 - 125 | Recovery | = | 100.000% | |
| 26) 1,2-Dichloroethane-d4 | 5.698 | 65 | 15886 | 5.315 | ug/L | 0.00 |
| Spiked Amount | 5.000 | Range 70 - 130 | Recovery | = | 106.400% | |
| 32) Benzene-d6 | 5.721 | 84 | 65558 | 5.287 | ug/L | 0.00 |
| Spiked Amount | 5.000 | Range 70 - 125 | Recovery | = | 105.800% | |
| 36) 1,2-Dichloropropane-d6 | 6.685 | 67 | 19977 | 5.342 | ug/L | 0.00 |
| Spiked Amount | 5.000 | Range 60 - 140 | Recovery | = | 106.800% | |
| 41) Toluene-d8 | 7.894 | 98 | 61189 | 5.199 | ug/L | 0.00 |
| Spiked Amount | 5.000 | Range 70 - 130 | Recovery | = | 104.000% | |
| 43) trans-1,3-Dichloroprop... | 8.177 | 79 | 7688 | 5.158 | ug/L | 0.00 |
| Spiked Amount | 5.000 | Range 55 - 130 | Recovery | = | 103.200% | |
| 46) 2-Hexanone-d5 | 8.631 | 63 | 26208 | 55.110 | ug/L | 0.00 |
| Spiked Amount | 50.000 | Range 45 - 130 | Recovery | = | 110.220% | |
| 56) 1,1,2,2-Tetrachloroeth... | 10.750 | 84 | 12923 | 5.155 | ug/L | 0.00 |
| Spiked Amount | 5.000 | Range 65 - 120 | Recovery | = | 103.200% | |
| 66) 1,2-Dichlorobenzene-d4 | 12.187 | 152 | 19454 | 5.657 | ug/L | 0.00 |
| Spiked Amount | 5.000 | Range 80 - 120 | Recovery | = | 113.200% | |
| ----- | | | | | | |
| Target Compounds | | | | | | Qvalue |
| 35) Methylcyclohexane | 6.682 | 83 | 4643 | 0.575 | ug/L # | 18 |
| 37) 1,2-Dichloropropane | 6.685 | 63 | 2266 | 0.500 | ug/L # | 89 |
| 47) Tetrachloroethene | 8.550 | 164 | 3604 | 0.981 | ug/L | 95 |
| 49) Dibromochloromethane | 8.550 | 129 | 3695 | 0.967 | ug/L # | 10 |
| 61) 1,2,3-Trichloropropane | 11.807 | 75 | 3096 | 1.259 | ug/L # | 66 |
| 68) 1,2-Dibromo-3-chloropr... | 12.766 | 75 | 129 | 0.279 | ug/L # | 5 |
| ----- | | | | | | |

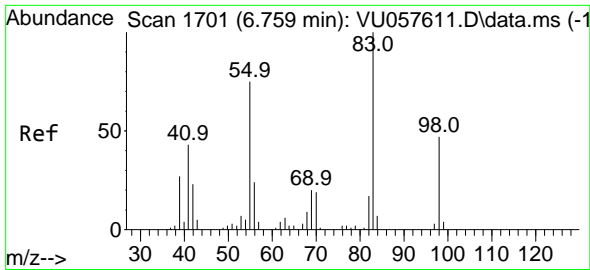
(#) = qualifier out of range (m) = manual integration (+) = signals summed

Data Path : Z:\voasrv\HPCHEM1\MSVOA_U\Data\VU012424\
 Data File : VU057617.D
 Acq On : 24 Jan 2024 14:33
 Operator : MD/SY
 Sample : P1228-09
 Misc : 25.0mL/MSVOA_U/WATER
 ALS Vial : 9 Sample Multiplier: 1

Instrument :
 MSVOA_U
 ClientSampleId :

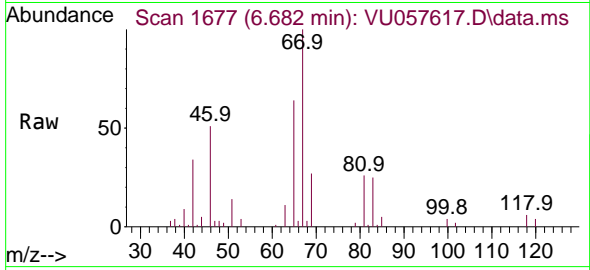
Quant Time: Jan 25 01:54:03 2024
 Quant Method : Z:\voasrv\HPCHEM1\MSVOA_U\Method\SFAMUTR012324WMA.M
 Quant Title : TRACE VOA SFAM1.0
 QLast Update : Thu Jan 25 01:52:13 2024
 Response via : Initial Calibration



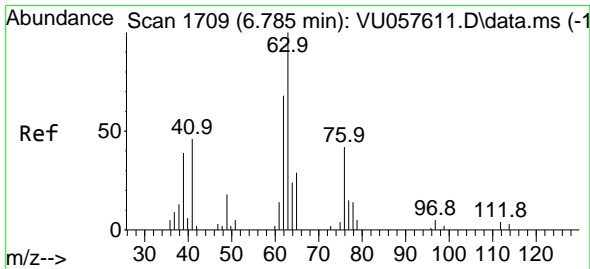
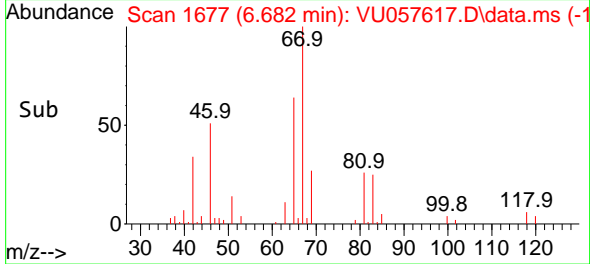
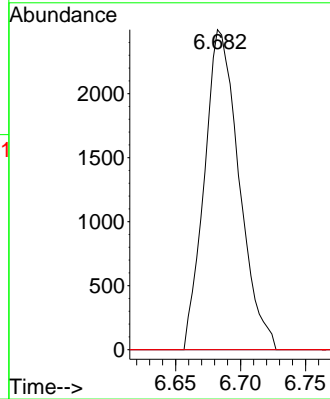


#35
 Methylcyclohexane
 Concen: 0.575 ug/L
 RT: 6.682 min Scan# 1677
 Delta R.T. -0.077 min
 Lab File: VU057617.D
 Acq: 24 Jan 2024 14:33

Instrument :
 MSVOA_U
 ClientSampleId :

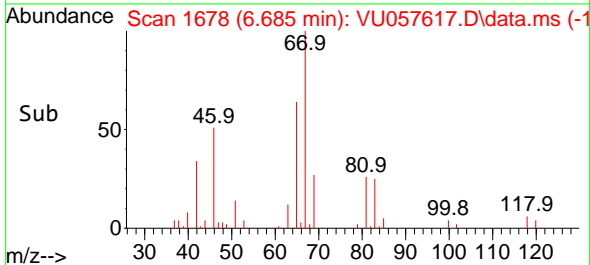
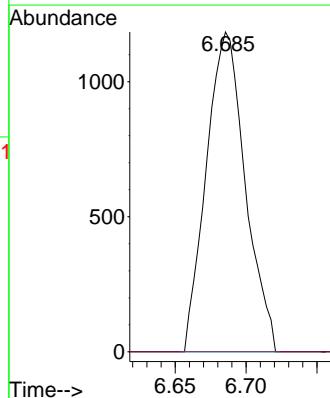
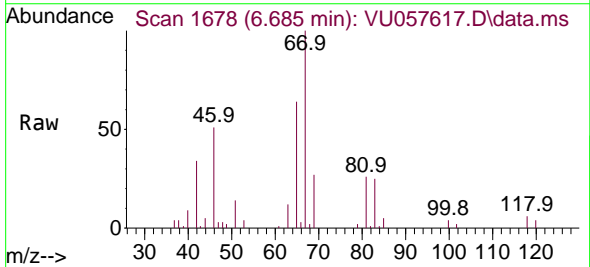


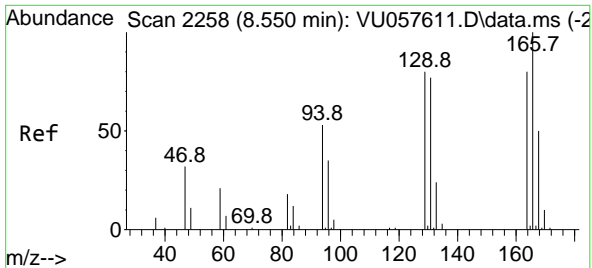
Tgt Ion: 83 Resp: 4643
 Ion Ratio Lower Upper
 83 100
 55 0.0 61.4 92.0#
 98 0.0 38.2 57.4#



#37
 1,2-Dichloropropane
 Concen: 0.500 ug/L
 RT: 6.685 min Scan# 1678
 Delta R.T. -0.099 min
 Lab File: VU057617.D
 Acq: 24 Jan 2024 14:33

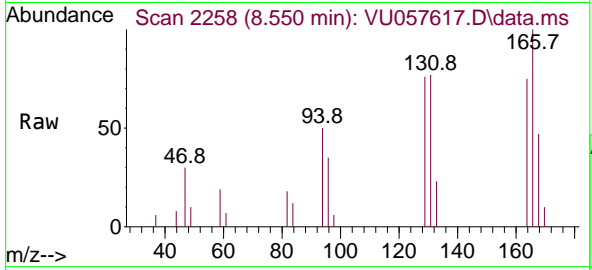
Tgt Ion: 63 Resp: 2266
 Ion Ratio Lower Upper
 63 100
 112 0.0 3.0 4.4#





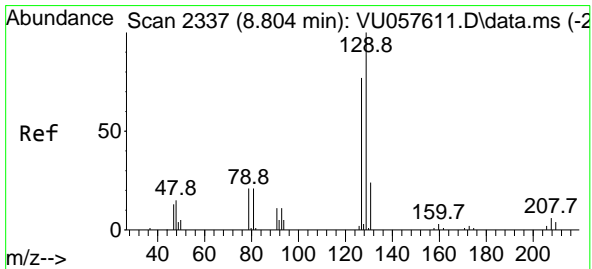
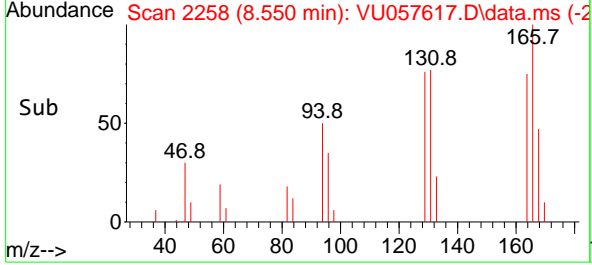
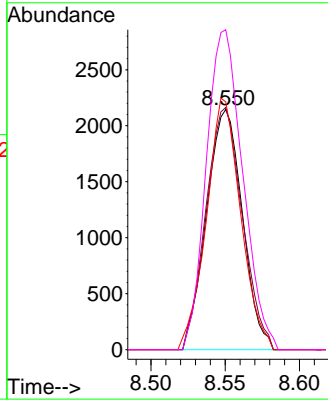
#47
 Tetrachloroethene
 Concen: 0.981 ug/L
 RT: 8.550 min Scan# 2258
 Delta R.T. 0.000 min
 Lab File: VU057617.D
 Acq: 24 Jan 2024 14:33

Instrument : MSVOA_U
 ClientSampleId :



Tgt Ion:164 Resp: 3604

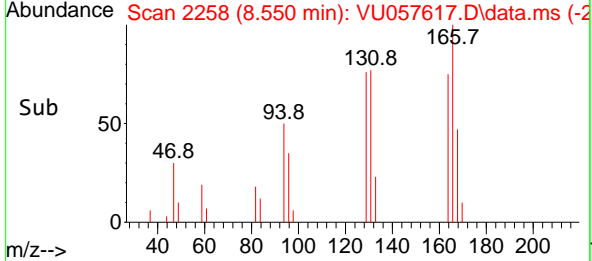
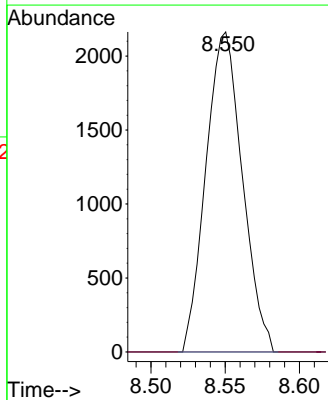
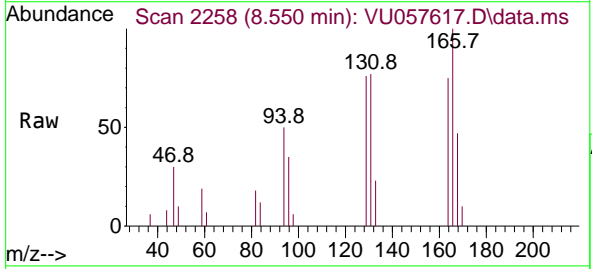
| Ion | Ratio | Lower | Upper |
|-----|-------|-------|-------|
| 164 | 100 | | |
| 129 | 100.8 | 71.3 | 132.5 |
| 131 | 103.2 | 68.1 | 126.5 |
| 166 | 133.2 | 87.4 | 162.4 |

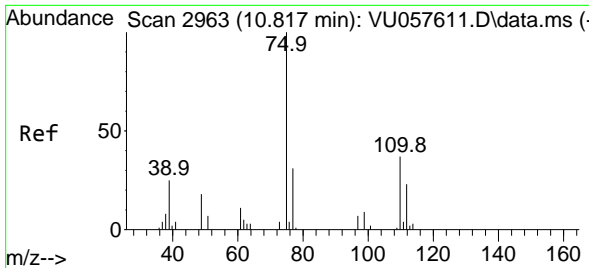


#49
 Dibromochloromethane
 Concen: 0.967 ug/L
 RT: 8.550 min Scan# 2258
 Delta R.T. -0.254 min
 Lab File: VU057617.D
 Acq: 24 Jan 2024 14:33

Tgt Ion:129 Resp: 3695

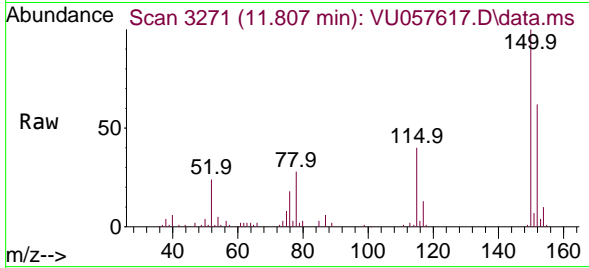
| Ion | Ratio | Lower | Upper |
|-----|-------|-------|--------|
| 129 | 100 | | |
| 127 | 0.0 | 54.5 | 101.1# |



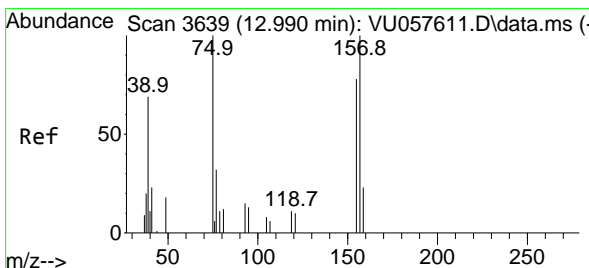
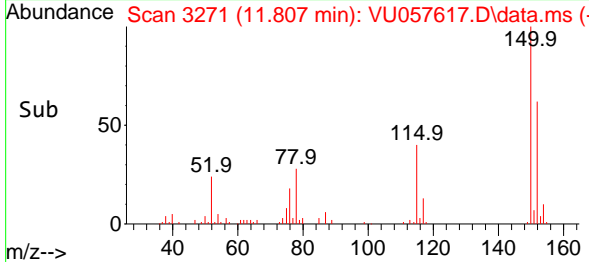
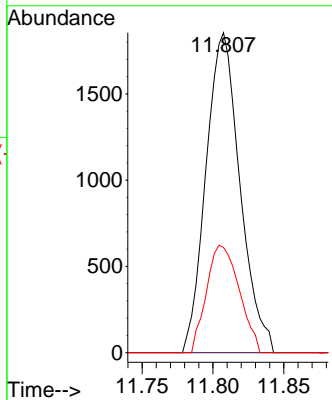


#61
 1,2,3-Trichloropropane
 Concen: 1.259 ug/L
 RT: 11.807 min Scan# 3111
 Delta R.T. 0.991 min
 Lab File: VU057617.D
 Acq: 24 Jan 2024 14:33

Instrument : MSVOA_U
 ClientSampleId :



Tgt Ion: 75 Resp: 3096
 Ion Ratio Lower Upper
 75 100
 110 0.0 30.1 45.1#
 77 32.2 25.5 38.3



#68
 1,2-Dibromo-3-chloropropane
 Concen: 0.279 ug/L
 RT: 12.766 min Scan# 3569
 Delta R.T. -0.225 min
 Lab File: VU057617.D
 Acq: 24 Jan 2024 14:33

Tgt Ion: 75 Resp: 129
 Ion Ratio Lower Upper
 75 100
 155 0.0 62.8 94.2#
 157 0.0 78.9 118.3#

