

Data Path : Z:\voasrv\HPCHEM1\MSVOA_U\Data\VU012424\
 Data File : VU057626.D
 Acq On : 24 Jan 2024 18:08
 Operator : MD/SY
 Sample : P1228-15DL 50X
 Misc : 25.0mL/MSVOA_U/WATER
 ALS Vial : 18 Sample Multiplier: 1

Instrument :
 MSVOA_U
 ClientSampleId :
 C0BA2DL

Integration Parameters: rteint.p

Integrator: RTE

Smoothing : ON

Filtering: 5

Sampling : 1

Min Area: 3 % of largest Peak

Start Thrs: 0.1

Max Peaks: 100

Stop Thrs : 0

Peak Location: TOP

If leading or trailing edge < 100 prefer < Baseline drop else tangent >

Peak separation: 5

Method : Z:\voasrv\HPCHEM1\MSVOA_U\Method\SFAMUTR012324WMA.M

Title : TRACE VOA SFAM1.0

Signal : TIC: VU057626.D\data.ms

peak #	R.T. min	first scan	max scan	last scan	PK TY	peak height	corr. area	corr. % max.	% of total
1	1.599	88	96	108	rVB	20084	22710	13.86%	1.558%
2	1.914	185	194	205	rBV	16052	21729	13.26%	1.490%
3	2.563	385	396	411	rVB	34885	55414	33.82%	3.801%
4	3.042	537	545	559	rVB2	1591	2905	1.77%	0.199%
5	3.177	575	587	603	rBV2	6334	13575	8.29%	0.931%
6	4.644	1028	1043	1071	rBV	18453	57277	34.96%	3.929%
7	5.055	1158	1171	1194	rVB2	32895	72879	44.48%	4.999%
8	5.721	1357	1378	1402	rBV2	64829	163849	100.00%	11.238%
9	6.245	1528	1541	1569	rBV	69793	134714	82.22%	9.240%
10	6.685	1666	1678	1700	rVB	39856	76653	46.78%	5.258%
11	7.563	1940	1951	1967	rBV	20678	36377	22.20%	2.495%
12	7.894	2041	2054	2078	rBV	79761	142047	86.69%	9.743%
13	8.177	2132	2142	2161	rVB	10654	19311	11.79%	1.325%
14	8.550	2249	2258	2265	rVB3	3546	5065	3.09%	0.347%
15	8.634	2273	2284	2320	rBV3	71437	155228	94.74%	10.647%
16	9.412	2514	2526	2549	rBV	93905	161634	98.65%	11.087%
17	10.750	2932	2942	2957	rBV	25767	41247	25.17%	2.829%
18	11.807	3260	3271	3290	rBV	93896	152752	93.23%	10.477%
19	12.187	3379	3389	3409	rBV	67495	112292	68.53%	7.702%
20	12.766	3559	3569	3578	rBV	5185	7794	4.76%	0.535%
21	14.569	4121	4130	4139	rVB	1613	2474	1.51%	0.170%

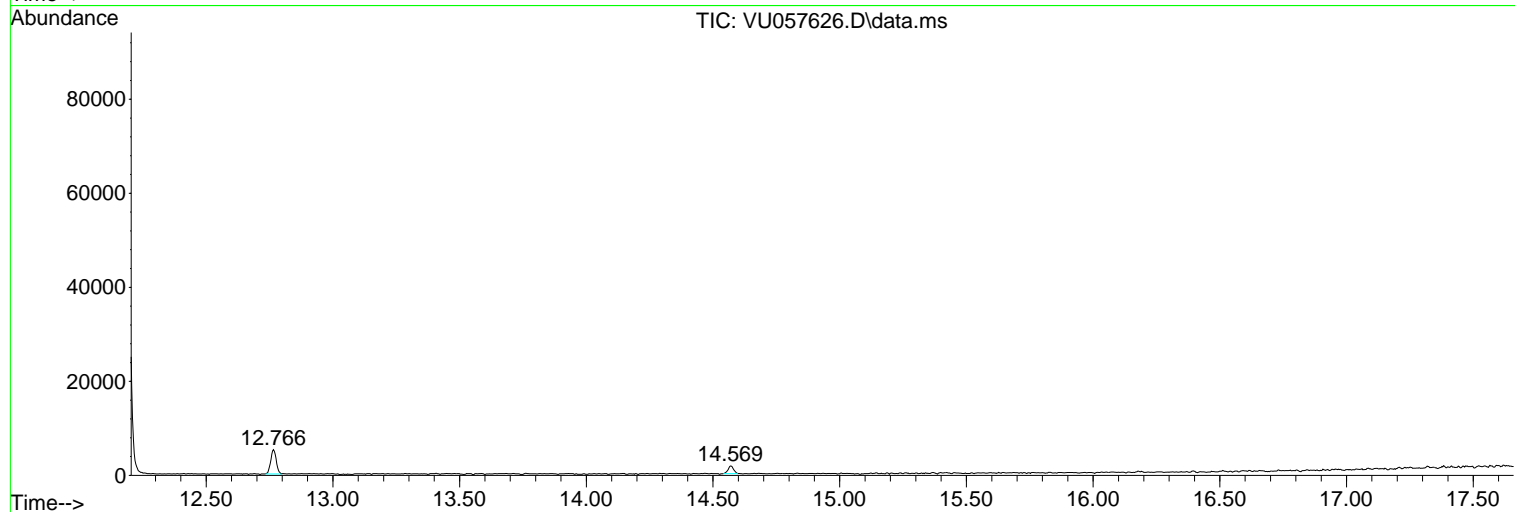
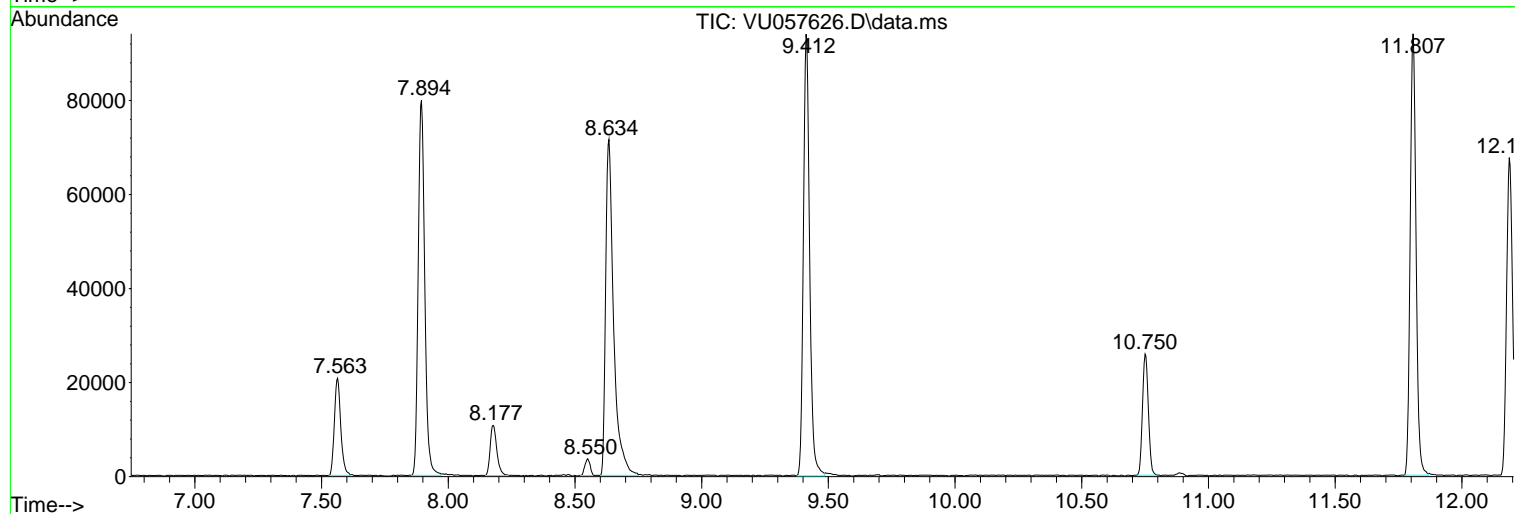
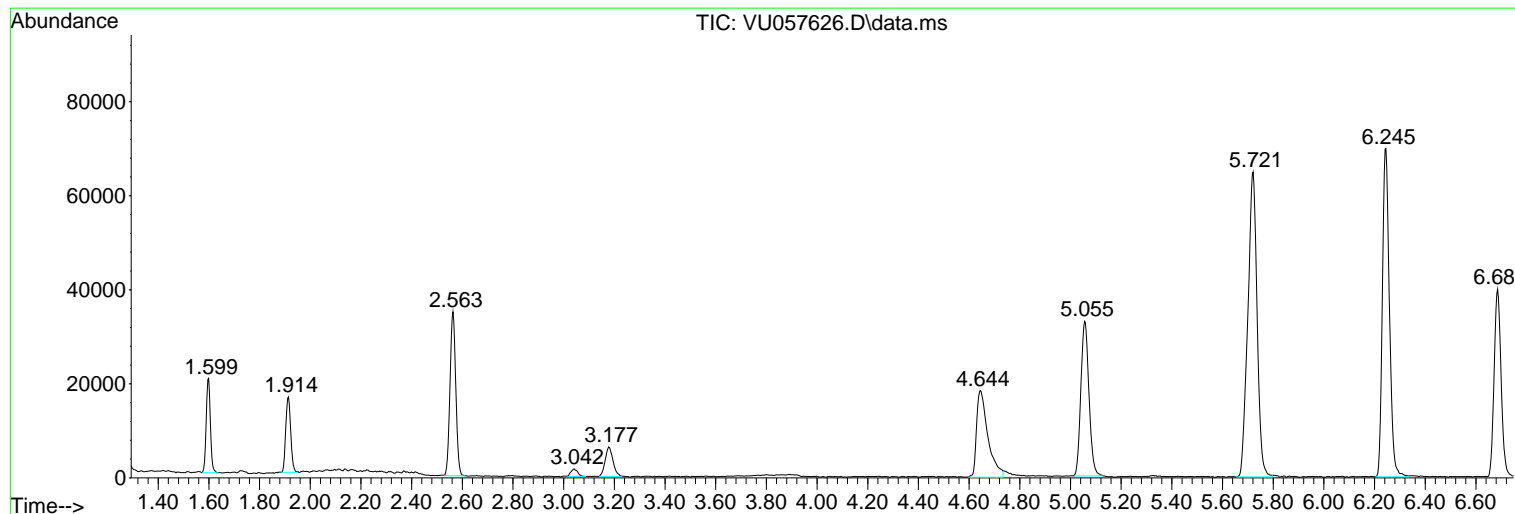
Sum of corrected areas: 1457926

Data Path : Z:\voasrv\HPCHEM1\MSVOA_U\Data\VU012424\
Data File : VU057626.D
Acq On : 24 Jan 2024 18:08
Operator : MD/SY
Sample : P1228-15DL 50X
Misc : 25.0mL/MSVOA_U/WATER
ALS Vial : 18 Sample Multiplier: 1

Instrument :
MSVOA_U
ClientSampleId :
C0BA2DL

Quant Method : Z:\voasrv\HPCHEM1\MSVOA_U\Method\SFAMUTR012324WMA.M
Quant Title : TRACE VOA SFAM1.0

TIC Library : C:\Database\NIST20.L
TIC Integration Parameters: LSCINT.P



Library Search Compound Report

Data Path : Z:\voasrv\HPCHEM1\MSVOA_U\Data\VU012424\
Data File : VU057626.D
Acq On : 24 Jan 2024 18:08
Operator : MD/SY
Sample : P1228-15DL 50X
Misc : 25.0mL/MSVOA_U/WATER
ALS Vial : 18 Sample Multiplier: 1

Instrument :
MSVOA_U
ClientSampleId :
C0BA2DL

Quant Method : Z:\voasrv\HPCHEM1\MSVOA_U\Method\SFAMUTR012324WMA.M
Quant Title : TRACE VOA SFAM1.0

TIC Library : C:\Database\NIST20.L
TIC Integration Parameters: LSCINT.P

No Library Search Compounds Detected

Data Path : Z:\voasrv\HPCHEM1\MSVOA_U\Data\VU012424\
Data File : VU057626.D
Acq On : 24 Jan 2024 18:08
Operator : MD/SY
Sample : P1228-15DL 50X
Misc : 25.0mL/MSVOA_U/WATER
ALS Vial : 18 Sample Multiplier: 1

Instrument :
MSVOA_U
ClientSampleId :
C0BA2DL

Quant Method : Z:\voasrv\HPCHEM1\MSVOA_U\Method\SFAMUTR012324WMA.M
Quant Title : TRACE VOA SFAM1.0

TIC Library : C:\Database\NIST0.L
TIC Integration Parameters: LSCINT.P

TIC Top Hit name	RT	EstConc	Units	Response	--Internal Standard--			
					#	RT	Resp	Conc
