

Data Path : Z:\voasrv\HPCHEM1\MSVOA_U\Data\VU012424\
 Data File : VU057634.D
 Acq On : 24 Jan 2024 21:46
 Operator : MD/SY
 Sample : VU0124WBL02
 Misc : 25.0mL/MSVOA_U/WATER
 ALS Vial : 27 Sample Multiplier: 1

Instrument :
 MSVOA_U
 ClientSampleId :
 VBLK135

Integration Parameters: rteint.p
 Integrator: RTE
 Smoothing : ON Filtering: 5
 Sampling : 1 Min Area: 3 % of largest Peak
 Start Thrs: 0.1 Max Peaks: 100
 Stop Thrs : 0 Peak Location: TOP

If leading or trailing edge < 100 prefer < Baseline drop else tangent >
 Peak separation: 5

Method : Z:\voasrv\HPCHEM1\MSVOA_U\Method\SFAMUTR012324WMA.M
 Title : TRACE VOA SFAM1.0

Signal : TIC: VU057634.D\data.ms

peak #	R.T. min	first scan	max scan	last scan	PK TY	peak height	corr. area	corr. % max.	% of total
1	1.599	88	96	107	rVB	21958	24986	14.34%	1.719%
2	1.914	185	194	206	rVB	17520	23306	13.38%	1.604%
3	2.563	385	396	413	rVB	37770	61218	35.15%	4.213%
4	3.181	573	588	601	rBV2	2046	4725	2.71%	0.325%
5	4.644	1033	1043	1070	rBV	17273	53691	30.82%	3.695%
6	5.055	1156	1171	1191	rBV	34415	75726	43.48%	5.211%
7	5.721	1360	1378	1400	rBV2	68977	174181	100.00%	11.986%
8	6.245	1529	1541	1557	rBV	67358	126454	72.60%	8.702%
9	6.685	1663	1678	1697	rBV	42200	80027	45.94%	5.507%
10	7.560	1939	1950	1967	rBV	21056	37737	21.67%	2.597%
11	7.894	2040	2054	2074	rBV	85235	152125	87.34%	10.469%
12	8.177	2133	2142	2155	rBV3	11115	19642	11.28%	1.352%
13	8.547	2251	2257	2266	rBV3	2091	2868	1.65%	0.197%
14	8.634	2274	2284	2315	rBV3	71919	156233	89.70%	10.751%
15	9.412	2515	2526	2553	rBV	87955	151249	86.83%	10.408%
16	10.753	2929	2943	2958	rBV	25990	42340	24.31%	2.914%
17	11.807	3260	3271	3296	rBV	85353	139104	79.86%	9.572%
18	12.187	3379	3389	3407	rBV	68332	112779	64.75%	7.761%
19	12.766	3558	3569	3578	rVB2	4657	6815	3.91%	0.469%
20	13.846	3899	3905	3913	rBV5	1518	2201	1.26%	0.151%
21	14.573	4120	4131	4144	rVB2	3650	5762	3.31%	0.397%

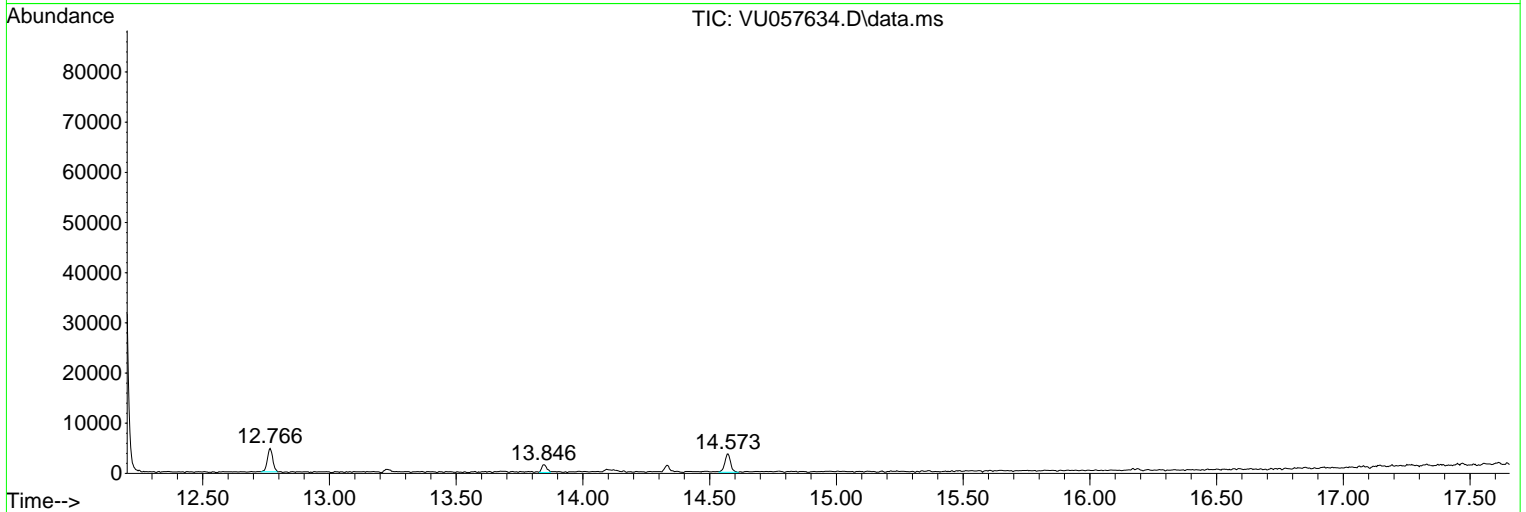
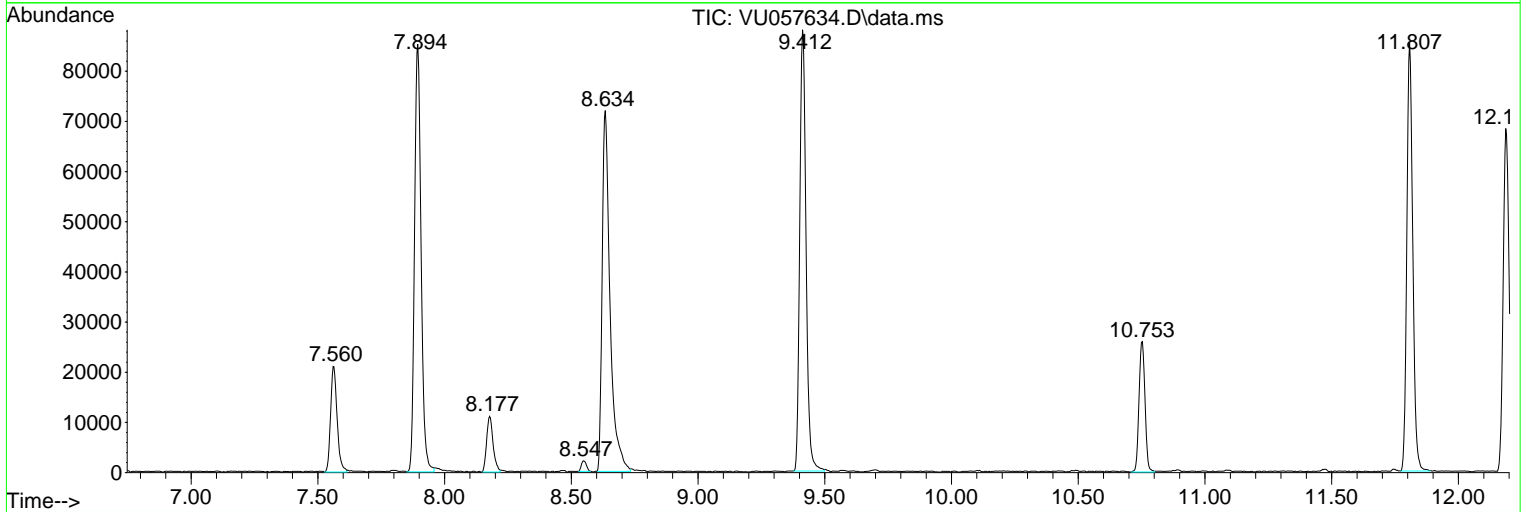
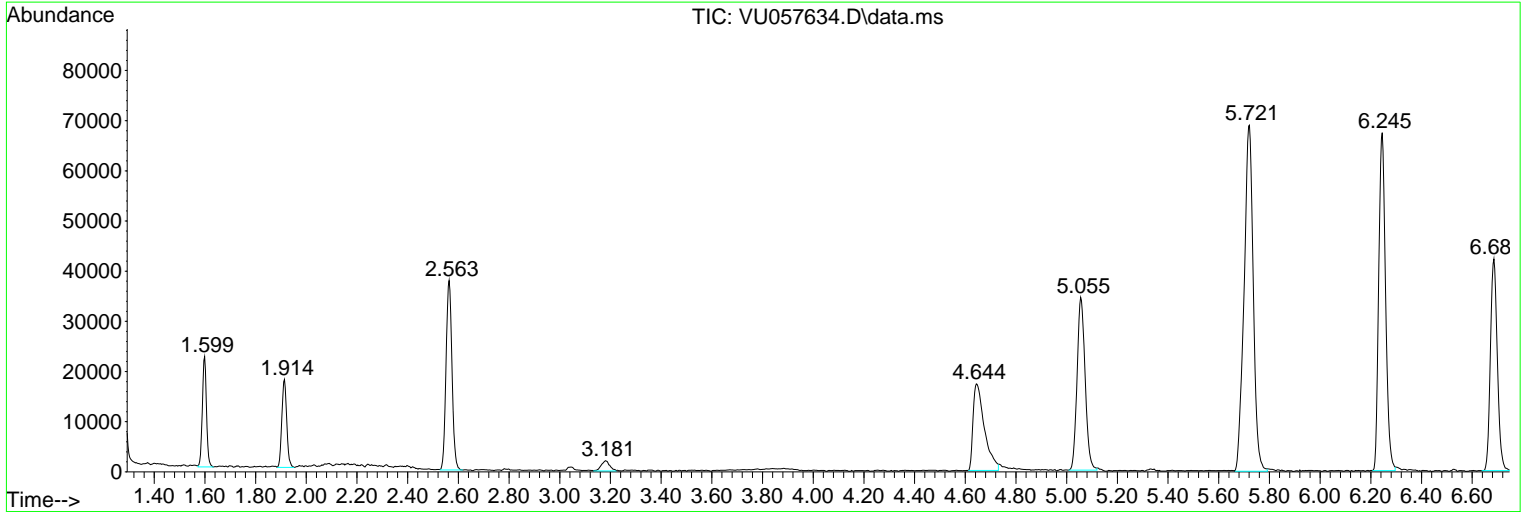
Sum of corrected areas: 1453169

Data Path : Z:\voasrv\HPCHEM1\MSVOA_U\Data\VU012424\
 Data File : VU057634.D
 Acq On : 24 Jan 2024 21:46
 Operator : MD/SY
 Sample : VU0124WBL02
 Misc : 25.0mL/MSVOA_U/WATER
 ALS Vial : 27 Sample Multiplier: 1

Instrument :
 MSVOA_U
 ClientSampleId :
 VBLK135

Quant Method : Z:\voasrv\HPCHEM1\MSVOA_U\Method\SFAMUTR012324WMA.M
 Quant Title : TRACE VOA SFAM1.0

TIC Library : C:\Database\NIST20.L
 TIC Integration Parameters: LSCINT.P



Library Search Compound Report

Data Path : Z:\voasrv\HPCHEM1\MSVOA_U\Data\VU012424\
Data File : VU057634.D
Acq On : 24 Jan 2024 21:46
Operator : MD/SY
Sample : VU0124WBL02
Misc : 25.0mL/MSVOA_U/WATER
ALS Vial : 27 Sample Multiplier: 1

Instrument :
MSVOA_U
ClientSampleId :
VBLK135

Quant Method : Z:\voasrv\HPCHEM1\MSVOA_U\Method\SFAMUTR012324WMA.M
Quant Title : TRACE VOA SFAM1.0

TIC Library : C:\Database\NIST20.L
TIC Integration Parameters: LSCINT.P

No Library Search Compounds Detected

Data Path : Z:\voasrv\HPCHEM1\MSVOA_U\Data\VU012424\
Data File : VU057634.D
Acq On : 24 Jan 2024 21:46
Operator : MD/SY
Sample : VU0124WBL02
Misc : 25.0mL/MSVOA_U/WATER
ALS Vial : 27 Sample Multiplier: 1

Instrument :
MSVOA_U
ClientSampleId :
VBLK135

Quant Method : Z:\voasrv\HPCHEM1\MSVOA_U\Method\SFAMUTR012324WMA.M
Quant Title : TRACE VOA SFAM1.0

TIC Library : C:\Database\NIST0.L
TIC Integration Parameters: LSCINT.P

TIC Top Hit name	RT	EstConc	Units	Response	--Internal Standard--		
					#	RT	Resp Conc
