

Data Path : Z:\voasrv\HPCHEM1\MSVOA_U\Data\VU012424\
 Data File : VU057650.D
 Acq On : 25 Jan 2024 04:13
 Operator : MD/SY
 Sample : P1229-32 50X
 Misc : 25.0mL/MSVOA_U/WATER
 ALS Vial : 43 Sample Multiplier: 1

Instrument :
 MSVOA_U
 ClientSampleId :
 COBB7

Integration Parameters: rteint.p
 Integrator: RTE
 Smoothing : ON
 Sampling : 1
 Start Thrs : 0.1
 Stop Thrs : 0
 Filtering: 5
 Min Area: 3 % of largest Peak
 Max Peaks: 100
 Peak Location: TOP

If leading or trailing edge < 100 prefer < Baseline drop else tangent >
 Peak separation: 5

Method : Z:\voasrv\HPCHEM1\MSVOA_U\Method\SFAMUTR012324WMA.M
 Title : TRACE VOA SFAM1.0

Signal : TIC: VU057650.D\data.ms

peak #	R.T. min	first scan	max scan	last scan	PK TY	peak height	corr. area	corr. % max.	% of total
1	1.599	89	96	106	rBV	18282	20647	13.40%	1.512%
2	1.914	185	194	204	rBV	15490	20234	13.13%	1.482%
3	2.563	385	396	413	rVB	32642	52422	34.02%	3.839%
4	3.042	535	545	555	rBV2	3507	6341	4.12%	0.464%
5	3.181	574	588	602	rBV2	4158	9473	6.15%	0.694%
6	4.653	1030	1046	1087	rBV2	14842	53665	34.83%	3.930%
7	5.055	1158	1171	1192	rBV	30888	68632	44.55%	5.026%
8	5.718	1360	1377	1405	rBV3	61395	154073	100.00%	11.284%
9	6.245	1528	1541	1562	rBV	64620	122561	79.55%	8.976%
10	6.685	1665	1678	1699	rBV	37584	73301	47.58%	5.368%
11	7.563	1940	1951	1970	rBV	18846	33189	21.54%	2.431%
12	7.894	2043	2054	2078	rBV	74204	130851	84.93%	9.583%
13	8.177	2132	2142	2162	rBV2	10403	17511	11.37%	1.282%
14	8.550	2250	2258	2270	rVB2	4989	7963	5.17%	0.583%
15	8.634	2274	2284	2321	rVV2	67687	149972	97.34%	10.983%
16	9.412	2515	2526	2549	rBV	83840	145651	94.53%	10.667%
17	10.750	2931	2942	2956	rBV	23661	39165	25.42%	2.868%
18	11.807	3260	3271	3293	rBV	83483	137448	89.21%	10.066%
19	12.187	3374	3389	3412	rBV	62304	105753	68.64%	7.745%
20	12.769	3560	3570	3577	rVB2	3440	5525	3.59%	0.405%
21	14.569	4120	4130	4144	rBV	5876	9457	6.14%	0.693%
22	16.177	4623	4630	4640	rBV2	911	1615	1.05%	0.118%

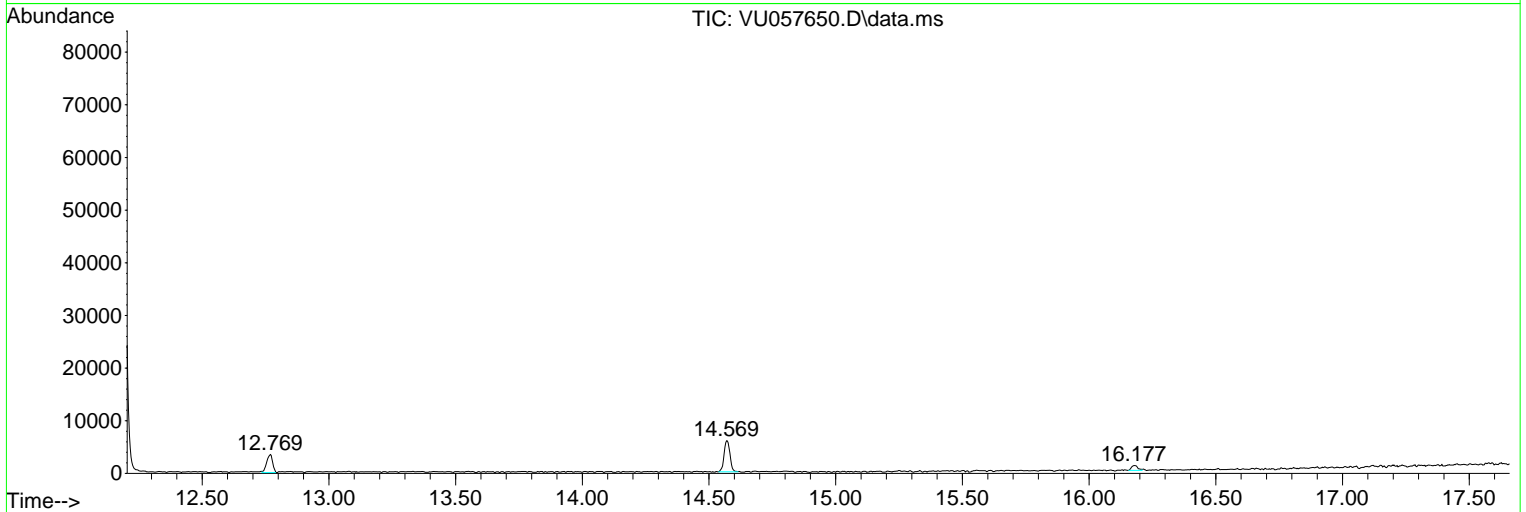
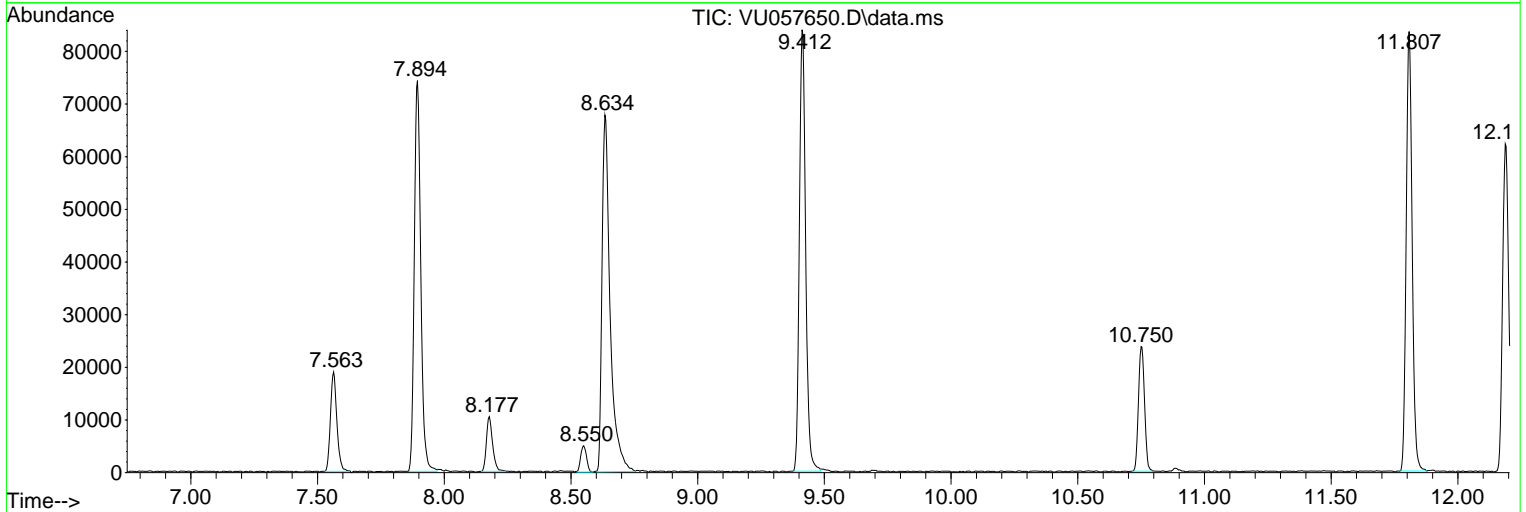
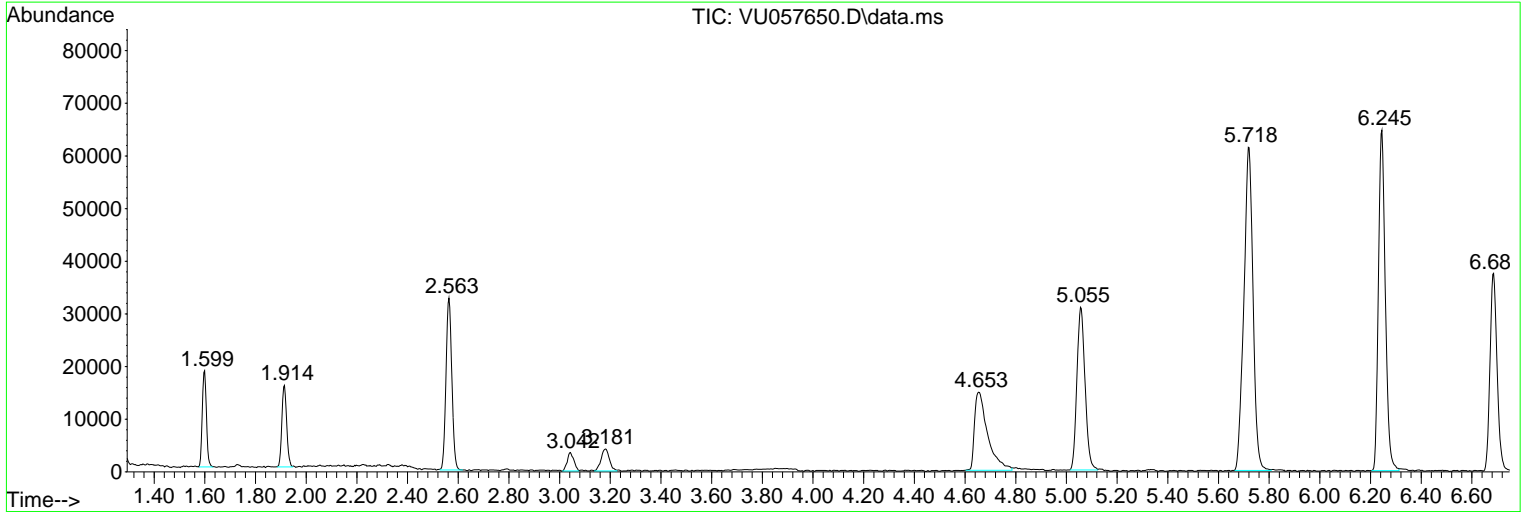
Sum of corrected areas: 1365449

Data Path : Z:\voasrv\HPCHEM1\MSVOA_U\Data\VU012424\
 Data File : VU057650.D
 Acq On : 25 Jan 2024 04:13
 Operator : MD/SY
 Sample : P1229-32 50X
 Misc : 25.0mL/MSVOA_U/WATER
 ALS Vial : 43 Sample Multiplier: 1

Instrument :
 MSVOA_U
 ClientSampleId :
 COBB7

Quant Method : Z:\voasrv\HPCHEM1\MSVOA_U\Method\SFAMUTR012324WMA.M
 Quant Title : TRACE VOA SFAM1.0

TIC Library : C:\Database\NIST20.L
 TIC Integration Parameters: LSCINT.P



Library Search Compound Report

Data Path : Z:\voasrv\HPCHEM1\MSVOA_U\Data\VU012424\
Data File : VU057650.D
Acq On : 25 Jan 2024 04:13
Operator : MD/SY
Sample : P1229-32 50X
Misc : 25.0mL/MSVOA_U/WATER
ALS Vial : 43 Sample Multiplier: 1

Instrument :
MSVOA_U
ClientSampleId :
C0BB7

Quant Method : Z:\voasrv\HPCHEM1\MSVOA_U\Method\SFAMUTR012324WMA.M
Quant Title : TRACE VOA SFAM1.0

TIC Library : C:\Database\NIST20.L
TIC Integration Parameters: LSCINT.P

No Library Search Compounds Detected

Data Path : Z:\voasrv\HPCHEM1\MSVOA_U\Data\VU012424\
Data File : VU057650.D
Acq On : 25 Jan 2024 04:13
Operator : MD/SY
Sample : P1229-32 50X
Misc : 25.0mL/MSVOA_U/WATER
ALS Vial : 43 Sample Multiplier: 1

Instrument :
MSVOA_U
ClientSampleId :
C0BB7

Quant Method : Z:\voasrv\HPCHEM1\MSVOA_U\Method\SFAMUTR012324WMA.M
Quant Title : TRACE VOA SFAM1.0

TIC Library : C:\Database\NIST0.L
TIC Integration Parameters: LSCINT.P

TIC Top Hit name	RT	EstConc	Units	Response	--Internal Standard--		
					#	RT	Resp Conc
