

Data Path : Z:\voasrv\HPCHEM1\MSVOA_U\Data\VU020322\
 Data File : VU047017.D
 Acq On : 03 Feb 2022 13:20
 Operator : SY/MD
 Sample : VU0203WBL01
 Misc : 25.0mL/MSVOA_U/WATER
 ALS Vial : 4 Sample Multiplier: 1

Instrument :
 MSVOA_U
 ClientSampleId :
 VBLK062

Integration Parameters: rteint.p
 Integrator: RTE
 Smoothing : ON Filtering: 5
 Sampling : 1 Min Area: 3 % of largest Peak
 Start Thrs: 0.1 Max Peaks: 100
 Stop Thrs : 0 Peak Location: TOP

If leading or trailing edge < 100 prefer < Baseline drop else tangent >
 Peak separation: 5

Method : Z:\voasrv\HPCHEM1\MSVOA_U\Method\SFAMUTR011822WMA.M
 Title : TRACE VOA SFAM1.0

Signal : TIC: VU047017.D\data.ms

peak #	R.T. min	first scan	max scan	last scan	PK TY	peak height	corr. area	corr. % max.	% of total
1	1.600	74	81	101	rVB	64441	75213	15.07%	2.087%
2	1.919	170	180	198	rBV	52908	72350	14.50%	2.007%
3	2.571	371	383	396	rBV	102154	164395	32.95%	4.561%
4	4.645	1013	1028	1068	rBV	55961	197981	39.68%	5.493%
5	5.070	1144	1160	1181	rBV	90257	195450	39.17%	5.423%
6	5.729	1344	1365	1392	rBV2	165441	434885	87.15%	12.067%
7	6.253	1512	1528	1549	rBV	123140	238037	47.70%	6.605%
8	6.693	1651	1665	1687	rBV	107738	210498	42.19%	5.841%
9	7.568	1922	1937	1954	rBV2	47085	84630	16.96%	2.348%
10	7.902	2028	2041	2060	rBV	163925	306163	61.36%	8.495%
11	8.182	2117	2128	2143	rBV2	31392	50848	10.19%	1.411%
12	8.639	2257	2270	2312	rBV	255797	498980	100.00%	13.845%
13	9.420	2501	2513	2534	rBV	203087	354357	71.02%	9.832%
14	10.761	2918	2930	2943	rBV	86660	139744	28.01%	3.877%
15	11.815	3246	3258	3272	rBV	189790	306645	61.45%	8.508%
16	12.195	3358	3376	3390	rBV2	170117	273834	54.88%	7.598%

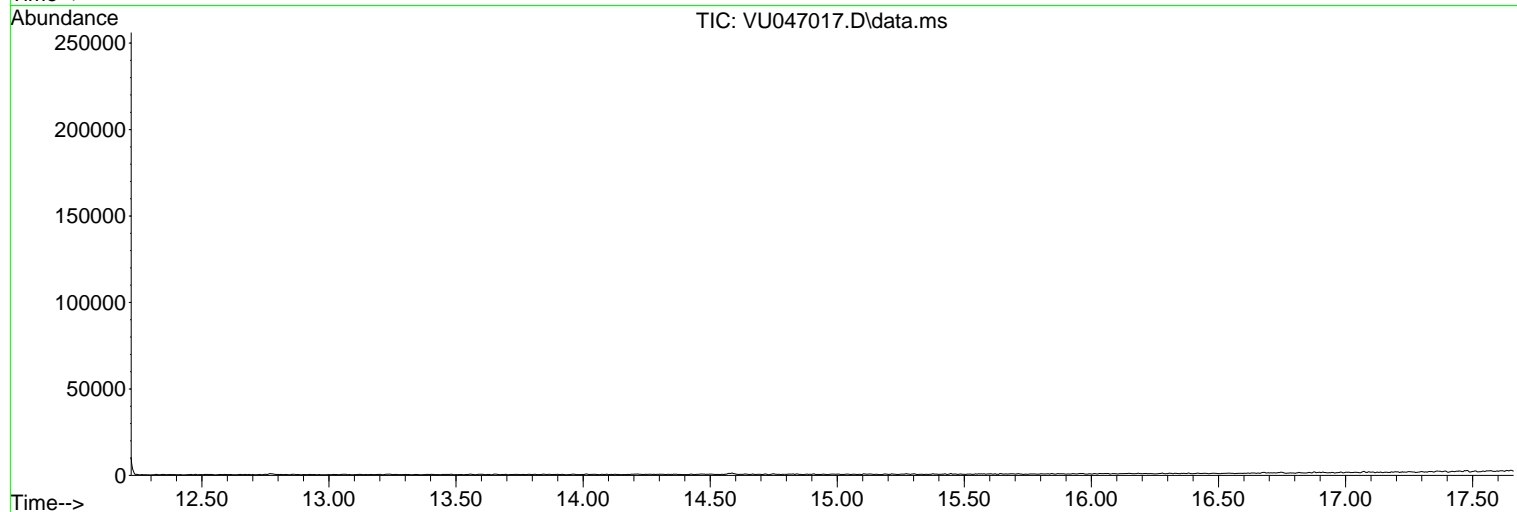
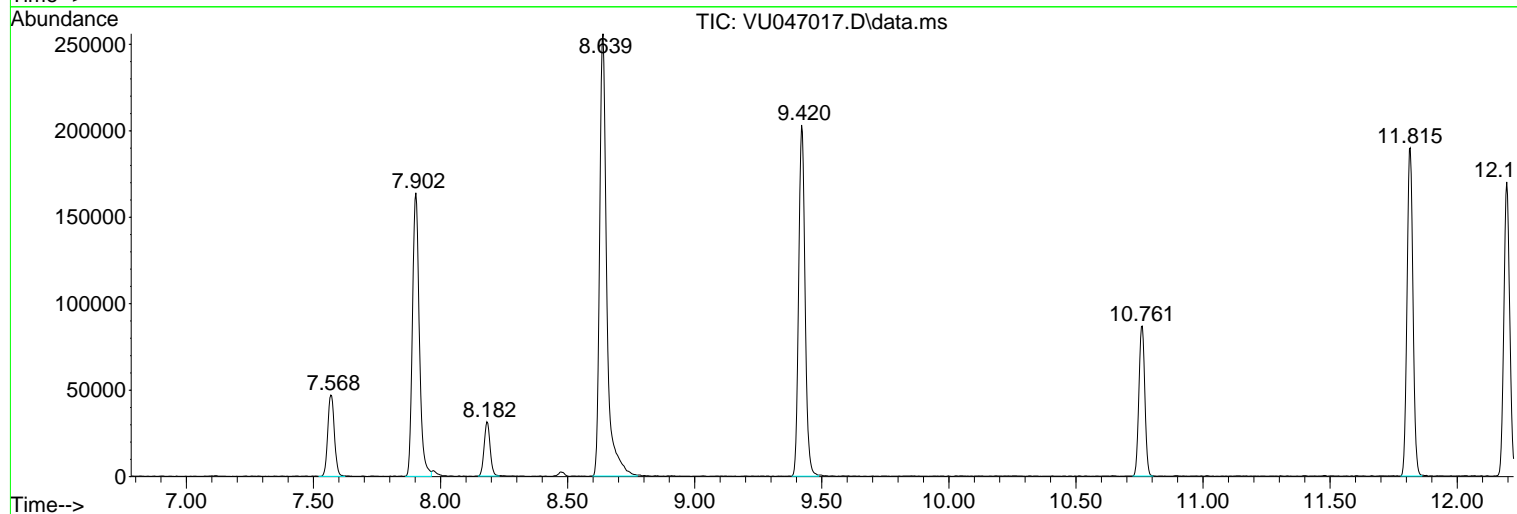
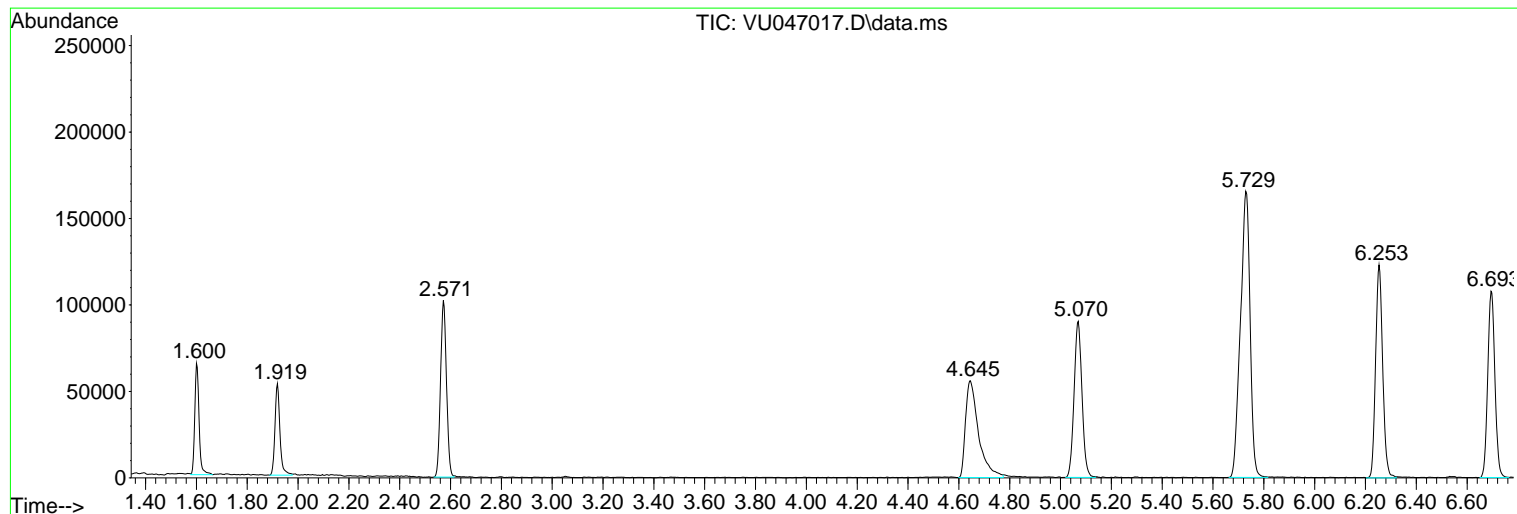
Sum of corrected areas: 3604010

Data Path : Z:\voasrv\HPCHEM1\MSVOA_U\Data\VU020322\
Data File : VU047017.D
Acq On : 03 Feb 2022 13:20
Operator : SY/MD
Sample : VU0203WBL01
Misc : 25.0mL/MSVOA_U/WATER
ALS Vial : 4 Sample Multiplier: 1

Instrument :
MSVOA_U
ClientSampleId :
VBLK062

Quant Method : Z:\voasrv\HPCHEM1\MSVOA_U\Method\SFAMUTR011822WMA.M
Quant Title : TRACE VOA SFAM1.0

TIC Library : C:\Database\NIST20.L
TIC Integration Parameters: LSCINT.P



Data Path : Z:\voasrv\HPCHEM1\MSVOA_U\Data\VU020322\
Data File : VU047017.D
Acq On : 03 Feb 2022 13:20
Operator : SY/MD
Sample : VU0203WBL01
Misc : 25.0mL/MSVOA_U/WATER
ALS Vial : 4 Sample Multiplier: 1

Instrument :
MSVOA_U
ClientSampleId :
VBLK062

Quant Method : Z:\voasrv\HPCHEM1\MSVOA_U\Method\SFAMUTR011822WMA.M
Quant Title : TRACE VOA SFAM1.0

TIC Library : C:\Database\NIST0.L
TIC Integration Parameters: LSCINT.P

No Library Search Compounds Detected

Data Path : Z:\voasrv\HPCHEM1\MSVOA_U\Data\VU020322\
Data File : VU047017.D
Acq On : 03 Feb 2022 13:20
Operator : SY/MD
Sample : VU0203WBL01
Misc : 25.0mL/MSVOA_U/WATER
ALS Vial : 4 Sample Multiplier: 1

Instrument :
MSVOA_U
ClientSampleId :
VBLK062

Quant Method : Z:\voasrv\HPCHEM1\MSVOA_U\Method\SFAMUTR011822WMA.M
Quant Title : TRACE VOA SFAM1.0

TIC Library : C:\Database\NIST0.L
TIC Integration Parameters: LSCINT.P

TIC Top Hit name	RT	EstConc	Units	Response	--Internal Standard--			
					#	RT	Resp	Conc
