

Data Path : Z:\voasrv\HPCHEM1\MSVOA\_U\Data\VU020322\  
 Data File : VU047036.D  
 Acq On : 03 Feb 2022 21:03  
 Operator : SY/MD  
 Sample : N1349-05DL 1000X  
 Misc : 25.0mL/MSVOA\_U/WATER  
 ALS Vial : 23 Sample Multiplier: 1

Instrument :  
 MSVOA\_U  
 ClientSampleId :  
 C0HP4DL

Integration Parameters: rteint.p  
 Integrator: RTE  
 Smoothing : ON Filtering: 5  
 Sampling : 1 Min Area: 3 % of largest Peak  
 Start Thrs: 0.1 Max Peaks: 100  
 Stop Thrs : 0 Peak Location: TOP

If leading or trailing edge < 100 prefer < Baseline drop else tangent >  
 Peak separation: 5

Method : Z:\voasrv\HPCHEM1\MSVOA\_U\Method\SFAMUTR011822WMA.M  
 Title : TRACE VOA SFAM1.0

Signal : TIC: VU047036.D\data.ms

peak #	R.T. min	first scan	max scan	last scan	PK TY	peak height	corr. area	corr. % max.	% of total
1	1.601	73	81	99	rVB	55522	62617	14.72%	1.679%
2	1.916	171	179	192	rBV	42871	57539	13.53%	1.543%
3	2.575	370	384	400	rBV2	101662	191821	45.09%	5.143%
4	4.633	1009	1024	1050	rBV	64088	165559	38.92%	4.439%
5	5.067	1143	1159	1179	rBV	79554	174001	40.90%	4.665%
6	5.321	1222	1238	1249	rBV3	4381	9462	2.22%	0.254%
7	5.729	1340	1365	1385	rBV3	144406	381231	89.62%	10.222%
8	6.250	1513	1527	1547	rBV	118417	227176	53.41%	6.091%
9	6.546	1606	1619	1637	rBV	166755	309034	72.65%	8.286%
10	6.694	1652	1665	1685	rVB	95601	183938	43.24%	4.932%
11	7.568	1923	1937	1952	rBV	42683	73449	17.27%	1.969%
12	7.903	2024	2041	2059	rBV	145201	271560	63.84%	7.281%
13	8.182	2117	2128	2146	rBV2	26905	44468	10.45%	1.192%
14	8.475	2211	2219	2232	rVB4	3447	6127	1.44%	0.164%
15	8.555	2232	2244	2257	rBV2	79496	135627	31.88%	3.636%
16	8.636	2257	2269	2311	rVB	227024	425379	100.00%	11.405%
17	9.420	2500	2513	2538	rBV	195825	342543	80.53%	9.184%
18	10.758	2916	2929	2948	rVB	78294	126844	29.82%	3.401%
19	11.812	3245	3257	3277	rVB	186468	296353	69.67%	7.946%
20	12.195	3362	3376	3389	rBV	149758	244939	57.58%	6.567%

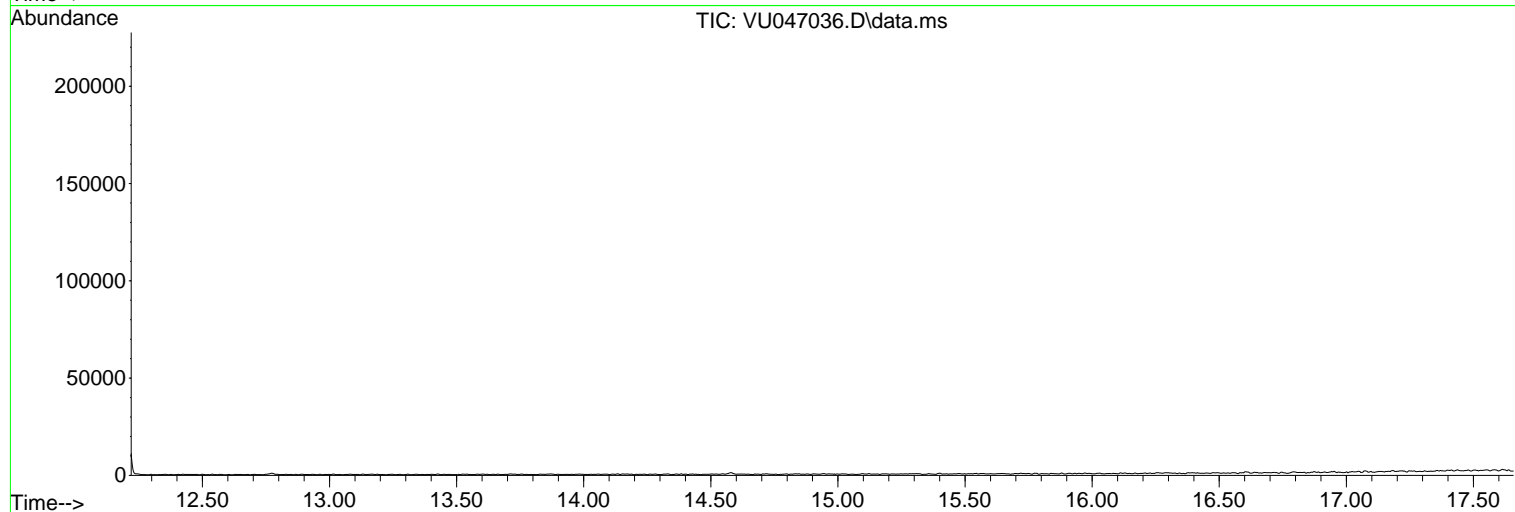
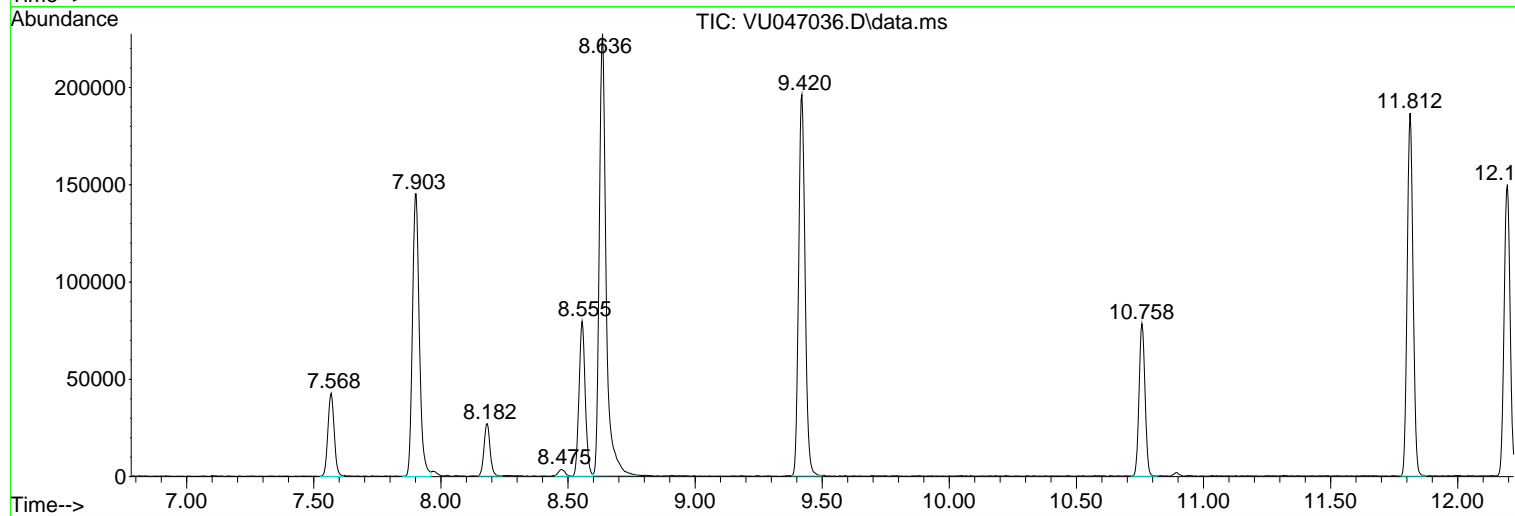
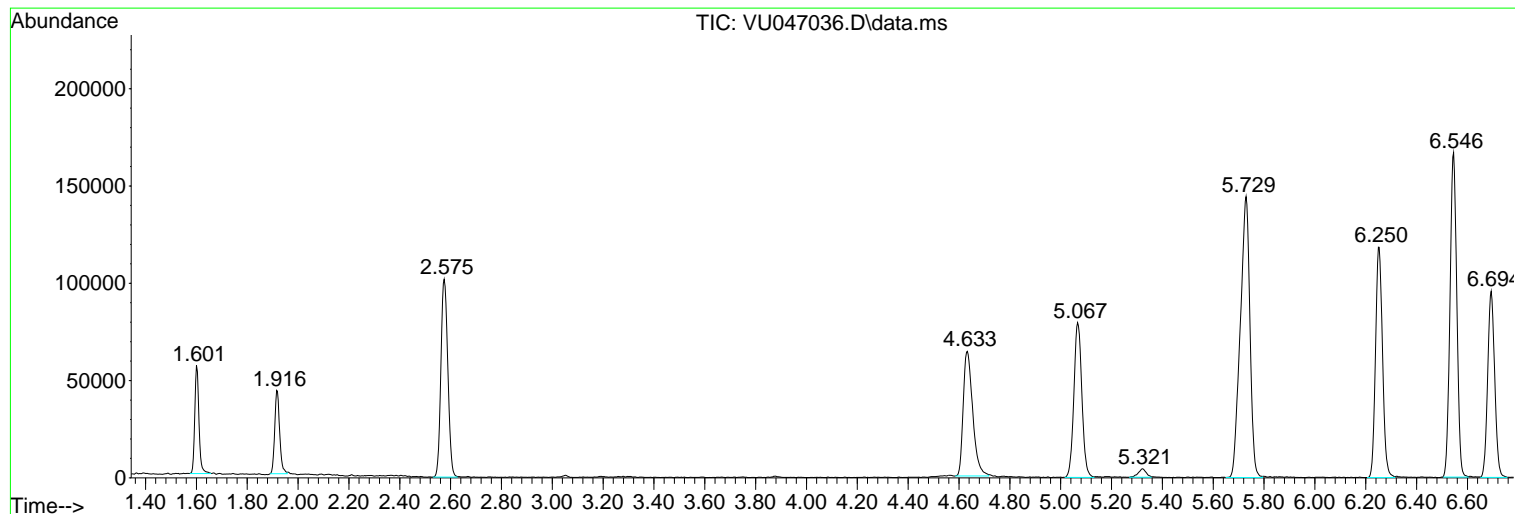
Sum of corrected areas: 3729667

Data Path : Z:\voasrv\HPCHEM1\MSVOA\_U\Data\VU020322\  
Data File : VU047036.D  
Acq On : 03 Feb 2022 21:03  
Operator : SY/MD  
Sample : N1349-05DL 1000X  
Misc : 25.0mL/MSVOA\_U/WATER  
ALS Vial : 23 Sample Multiplier: 1

Instrument :  
MSVOA\_U  
ClientSampleId :  
C0HP4DL

Quant Method : Z:\voasrv\HPCHEM1\MSVOA\_U\Method\SFAMUTR011822WMA.M  
Quant Title : TRACE VOA SFAM1.0

TIC Library : C:\Database\NIST20.L  
TIC Integration Parameters: LSCINT.P



Data Path : Z:\voasrv\HPCHEM1\MSVOA\_U\Data\VU020322\  
Data File : VU047036.D  
Acq On : 03 Feb 2022 21:03  
Operator : SY/MD  
Sample : N1349-05DL 1000X  
Misc : 25.0mL/MSVOA\_U/WATER  
ALS Vial : 23 Sample Multiplier: 1

**Instrument :**  
MSVOA\_U  
**ClientSampleId :**  
C0HP4DL

Quant Method : Z:\voasrv\HPCHEM1\MSVOA\_U\Method\SFAMUTR011822WMA.M  
Quant Title : TRACE VOA SFAM1.0

TIC Library : C:\Database\NIST20.L  
TIC Integration Parameters: LSCINT.P

No Library Search Compounds Detected

\*\*\*\*\*

Data Path : Z:\voasrv\HPCHEM1\MSVOA\_U\Data\VU020322\  
Data File : VU047036.D  
Acq On : 03 Feb 2022 21:03  
Operator : SY/MD  
Sample : N1349-05DL 1000X  
Misc : 25.0mL/MSVOA\_U/WATER  
ALS Vial : 23 Sample Multiplier: 1

Instrument :  
MSVOA\_U  
ClientSampleId :  
C0HP4DL

Quant Method : Z:\voasrv\HPCHEM1\MSVOA\_U\Method\SFAMUTR011822WMA.M  
Quant Title : TRACE VOA SFAM1.0

TIC Library : C:\Database\NIST20.L  
TIC Integration Parameters: LSCINT.P

TIC Top Hit name	RT	EstConc	Units	Response	--Internal Standard--		
					#	RT	Resp Conc

---