

Data Path : Z:\voasrv\HPCHEM1\MSVOA\_U\Data\VU020422\  
 Data File : VU047051.D  
 Acq On : 04 Feb 2022 17:10  
 Operator : SY/MD  
 Sample : N1349-15DL 50X  
 Misc : 25.0mL/MSVOA\_U/WATER  
 ALS Vial : 16 Sample Multiplier: 1

Instrument :  
 MSVOA\_U  
 ClientSampleId :

Quant Time: Feb 05 01:35:24 2022  
 Quant Method : Z:\voasrv\HPCHEM1\MSVOA\_U\Method\SFAMUTR020422WMA.M  
 Quant Title : TRACE VOA SFAM1.0  
 QLast Update : Sat Feb 05 01:18:17 2022  
 Response via : Initial Calibration

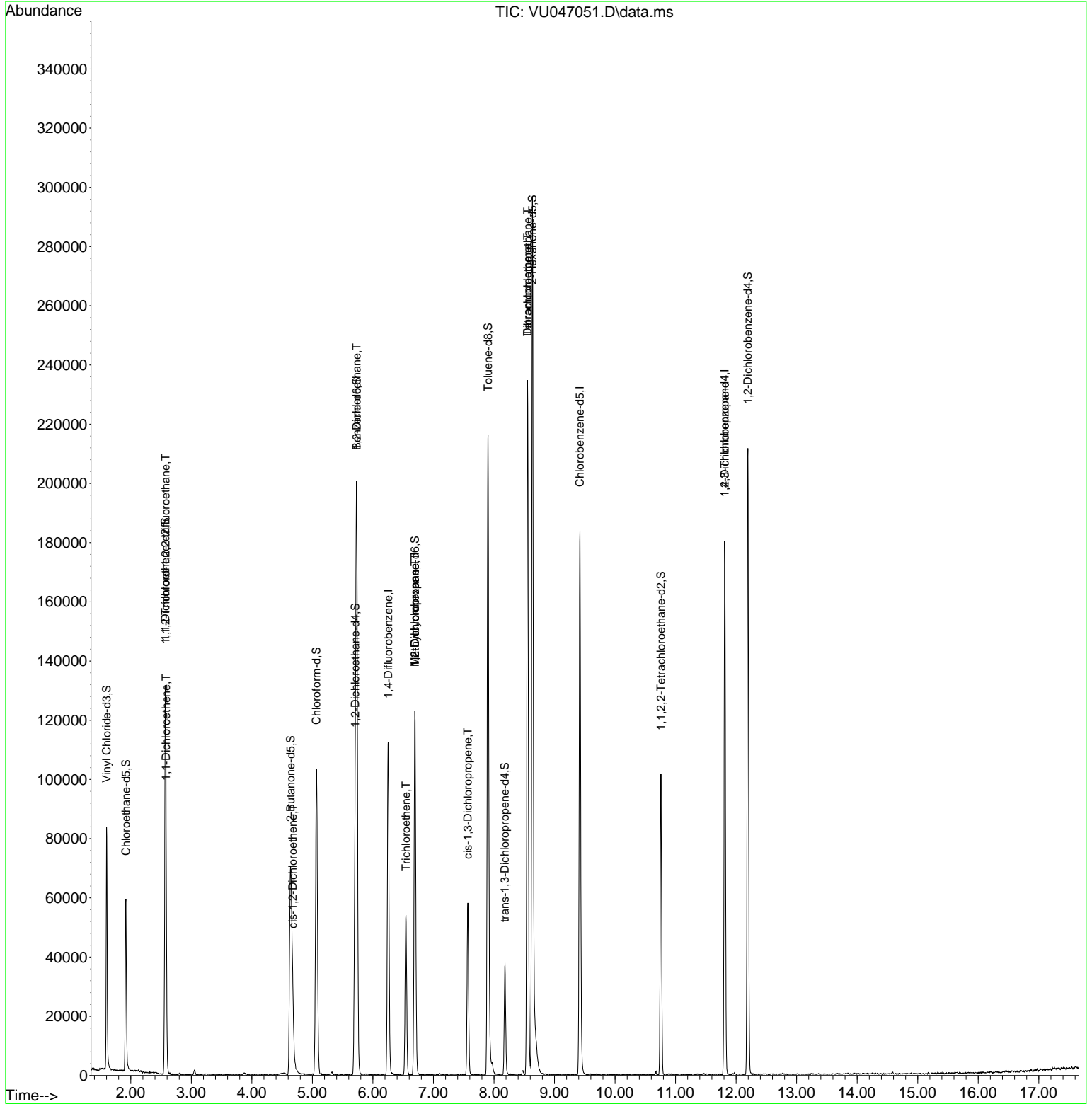
Compound	R.T.	QIon	Response	Conc	Units	Dev(Min)
Internal Standards						
1) 1,4-Difluorobenzene	6.253	114	94941	5.000	ug/L	0.00
28) Chlorobenzene-d5	9.420	117	112674	5.000	ug/L	0.00
58) 1,4-Dichlorobenzene-d4	11.812	152	47653	5.000	ug/L	0.00
System Monitoring Compounds						
4) Vinyl Chloride-d3	1.600	65	60522	4.969	ug/L	0.00
Spiked Amount	5.000	Range 40 - 130	Recovery	=	99.400%	
7) Chloroethane-d5	1.919	69	46787	4.976	ug/L	0.00
Spiked Amount	5.000	Range 65 - 130	Recovery	=	99.600%	
11) 1,1-Dichloroethene-d2	2.571	65	22585	5.181	ug/L	0.00
Spiked Amount	5.000	Range 60 - 125	Recovery	=	103.600%	
20) 2-Butanone-d5	4.639	46	128177	52.633	ug/L	0.00
Spiked Amount	50.000	Range 40 - 130	Recovery	=	105.260%	
24) Chloroform-d	5.067	84	97431	5.016	ug/L	0.00
Spiked Amount	5.000	Range 70 - 125	Recovery	=	100.400%	
26) 1,2-Dichloroethane-d4	5.706	65	50171	5.056	ug/L	0.00
Spiked Amount	5.000	Range 70 - 130	Recovery	=	101.200%	
32) Benzene-d6	5.732	84	193019	4.891	ug/L	0.00
Spiked Amount	5.000	Range 70 - 125	Recovery	=	97.800%	
36) 1,2-Dichloropropane-d6	6.693	67	59555	4.838	ug/L	0.00
Spiked Amount	5.000	Range 60 - 140	Recovery	=	96.800%	
41) Toluene-d8	7.902	98	155955	4.455	ug/L	0.00
Spiked Amount	5.000	Range 70 - 130	Recovery	=	89.200%	
43) trans-1,3-Dichloroprop...	8.179	79	21595	4.604	ug/L	0.00
Spiked Amount	5.000	Range 55 - 130	Recovery	=	92.000%	
46) 2-Hexanone-d5	8.636	63	107639	49.539	ug/L	0.00
Spiked Amount	50.000	Range 45 - 130	Recovery	=	99.080%	
56) 1,1,2,2-Tetrachloroeth...	10.758	84	50106	4.768	ug/L	0.00
Spiked Amount	5.000	Range 65 - 120	Recovery	=	95.400%	
66) 1,2-Dichlorobenzene-d4	12.195	152	57183	5.894	ug/L	0.00
Spiked Amount	5.000	Range 80 - 120	Recovery	=	117.800%	
Target Compounds						
10) 1,1,2-Trichloro-1,2,2-...	2.575	101	687	0.086	ug/L #	21
12) 1,1-Dichloroethene	2.584	96	7990	1.134	ug/L #	1
22) cis-1,2-Dichloroethene	4.674	96	7068	0.914	ug/L	98
27) 1,2-Dichloroethane	5.732	62	941	0.105	ug/L #	73
34) Trichloroethene	6.546	95	19148	2.393	ug/L	97
35) Methylcyclohexane	6.693	83	14274	1.287	ug/L #	18
37) 1,2-Dichloropropane	6.693	63	6230	0.744	ug/L #	85
39) cis-1,3-Dichloropropene	7.568	75	1337	0.123	ug/L #	32
47) Tetrachloroethene	8.555	164	54213	8.732	ug/L	96
49) Dibromochloromethane	8.555	129	51675	7.106	ug/L #	11
61) 1,2,3-Trichloropropane	11.812	75	5744	1.292	ug/L #	65

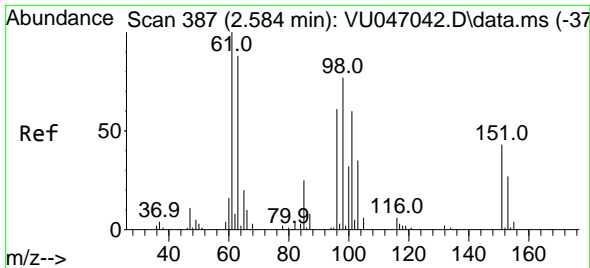
(#) = qualifier out of range (m) = manual integration (+) = signals summed

Data Path : Z:\voasrv\HPCHEM1\MSVOA\_U\Data\VU020422\  
 Data File : VU047051.D  
 Acq On : 04 Feb 2022 17:10  
 Operator : SY/MD  
 Sample : N1349-15DL 50X  
 Misc : 25.0mL/MSVOA\_U/WATER  
 ALS Vial : 16 Sample Multiplier: 1

Instrument :  
 MSVOA\_U  
 ClientSampleId :

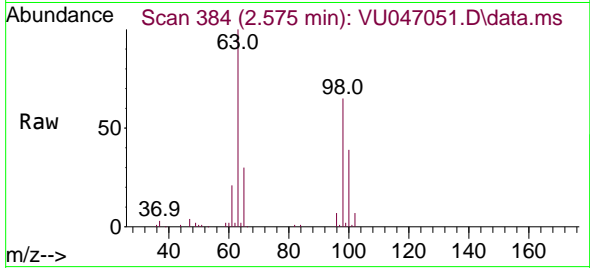
Quant Time: Feb 05 01:35:24 2022  
 Quant Method : Z:\voasrv\HPCHEM1\MSVOA\_U\Method\SFAMUTR020422WMA.M  
 Quant Title : TRACE VOA SFAM1.0  
 QLast Update : Sat Feb 05 01:18:17 2022  
 Response via : Initial Calibration





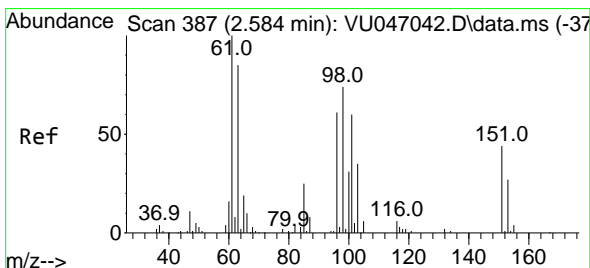
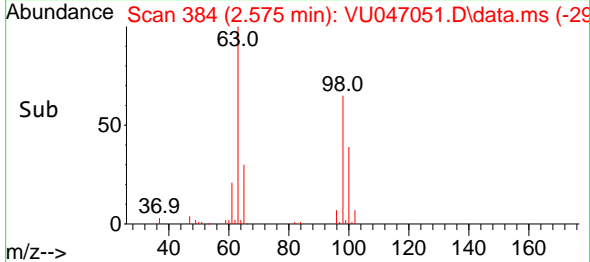
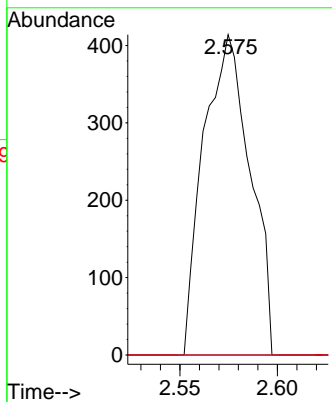
#10  
 1,1,2-Trichloro-1,2,2-trifluoroethane  
 Concen: 0.086 ug/L  
 RT: 2.575 min Scan# 384  
 Delta R.T. -0.010 min  
 Lab File: VU047051.D  
 Acq: 04 Feb 2022 17:10

Instrument :  
 MSVOA\_U  
 ClientSampleId :

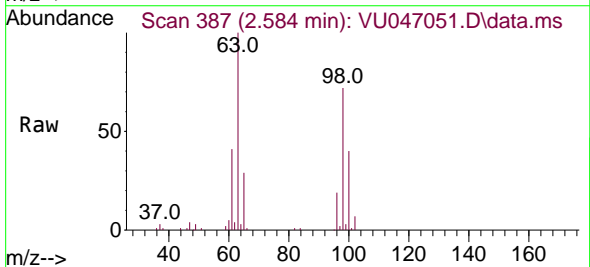


Tgt Ion:101 Resp: 687

Ion	Ratio	Lower	Upper
101	100		
85	0.0	33.8	50.6#
151	0.0	57.2	85.8#

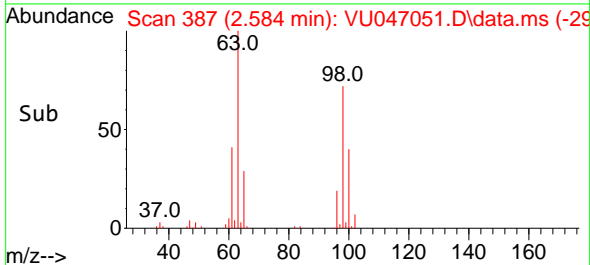
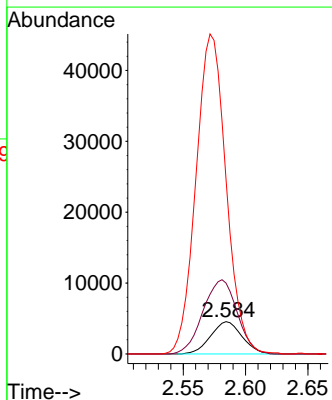


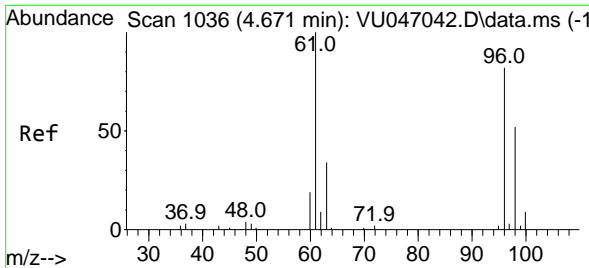
#12  
 1,1-Dichloroethene  
 Concen: 1.134 ug/L  
 RT: 2.584 min Scan# 387  
 Delta R.T. 0.000 min  
 Lab File: VU047051.D  
 Acq: 04 Feb 2022 17:10



Tgt Ion: 96 Resp: 7990

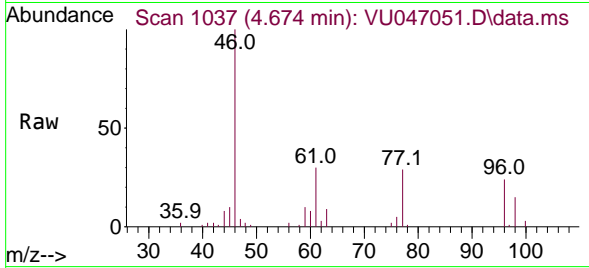
Ion	Ratio	Lower	Upper
96	100		
61	219.0	115.5	214.5#
63	538.6	103.6	192.4#





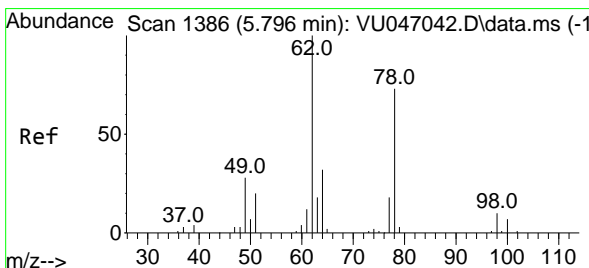
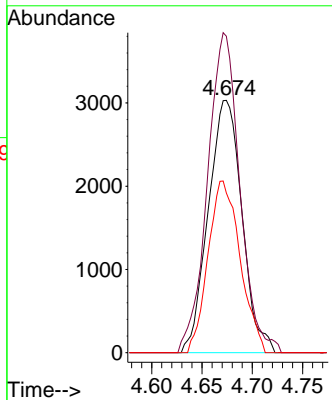
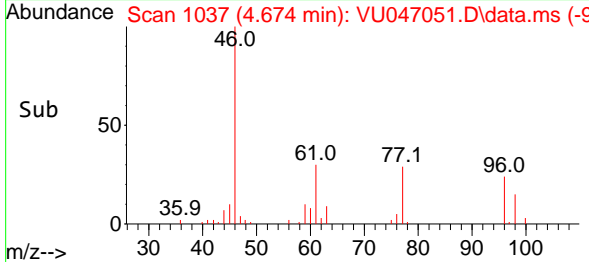
#22  
 cis-1,2-Dichloroethene  
 Concen: 0.914 ug/L  
 RT: 4.674 min Scan# 1036  
 Delta R.T. 0.003 min  
 Lab File: VU047051.D  
 Acq: 04 Feb 2022 17:10

Instrument : MSVOA\_U  
 ClientSampleId :

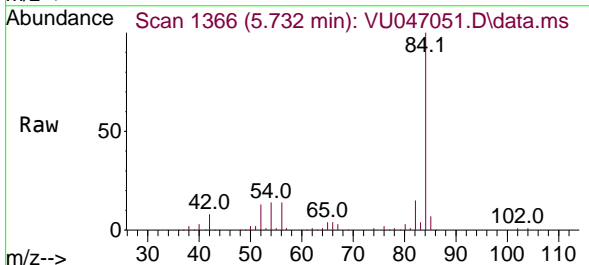


Tgt Ion: 96 Resp: 7068

Ion	Ratio	Lower	Upper
96	100		
61	125.4	85.6	159.0
98	63.3	44.7	83.1

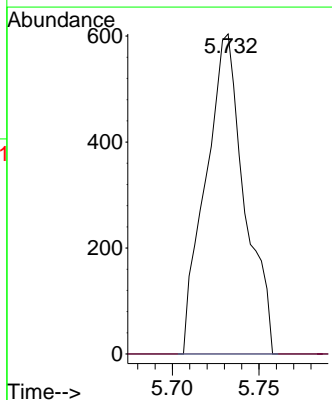
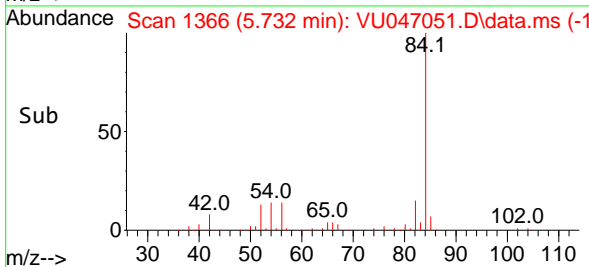


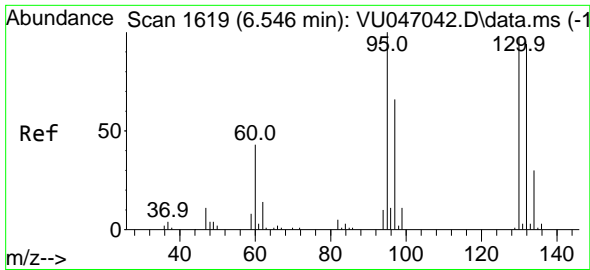
#27  
 1,2-Dichloroethane  
 Concen: 0.105 ug/L  
 RT: 5.732 min Scan# 1366  
 Delta R.T. -0.064 min  
 Lab File: VU047051.D  
 Acq: 04 Feb 2022 17:10



Tgt Ion: 62 Resp: 941

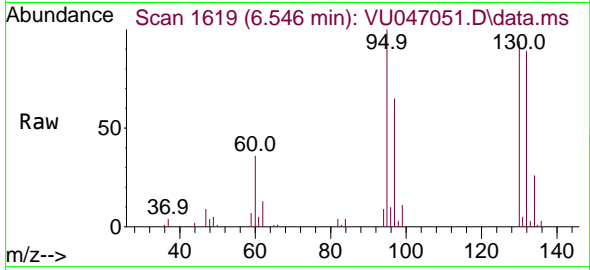
Ion	Ratio	Lower	Upper
62	100		
98	0.0	8.0	12.0#



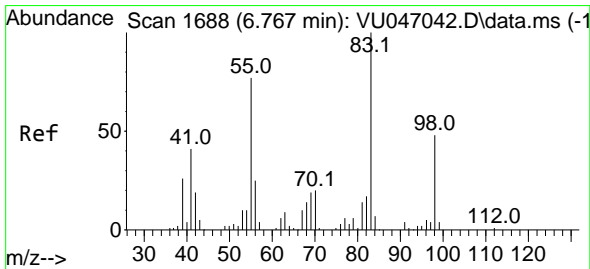
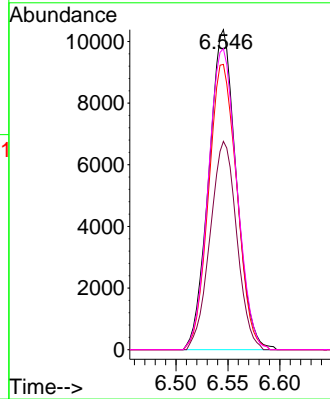
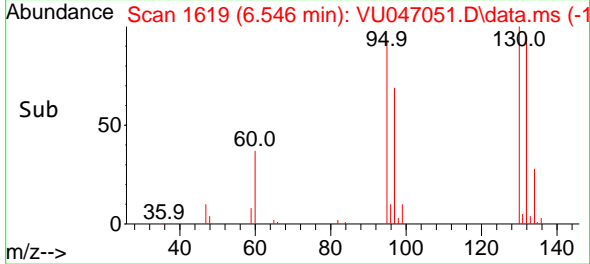


#34  
 Trichloroethene  
 Concen: 2.393 ug/L  
 RT: 6.546 min Scan# 1619  
 Delta R.T. 0.000 min  
 Lab File: VU047051.D  
 Acq: 04 Feb 2022 17:10

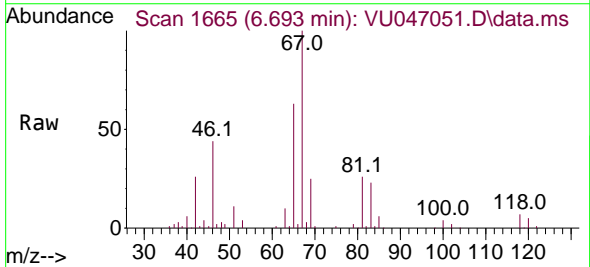
Instrument :  
 MSVOA\_U  
 ClientSampleId :



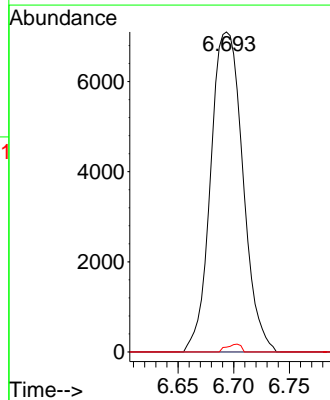
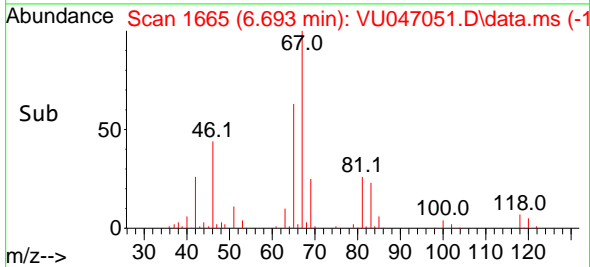
Tgt Ion: 95 Resp: 19148  
 Ion Ratio Lower Upper  
 95 100  
 97 65.1 46.1 85.5  
 132 89.1 65.9 122.5  
 130 94.1 67.9 126.1

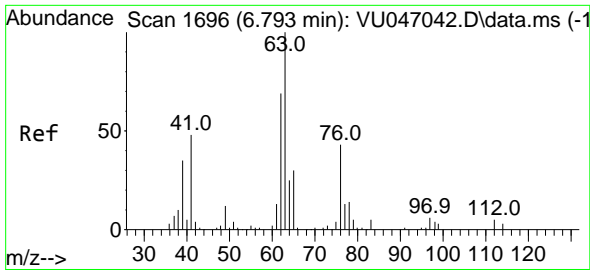


#35  
 Methylcyclohexane  
 Concen: 1.287 ug/L  
 RT: 6.693 min Scan# 1665  
 Delta R.T. -0.074 min  
 Lab File: VU047051.D  
 Acq: 04 Feb 2022 17:10



Tgt Ion: 83 Resp: 14274  
 Ion Ratio Lower Upper  
 83 100  
 55 0.0 61.2 91.8#  
 98 1.1 39.3 58.9#

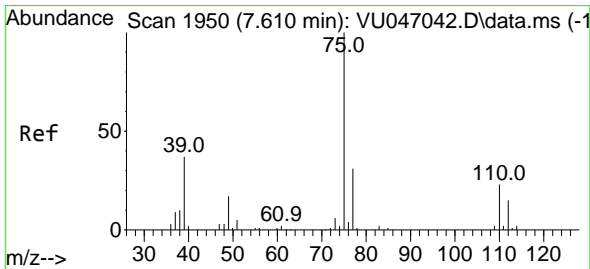
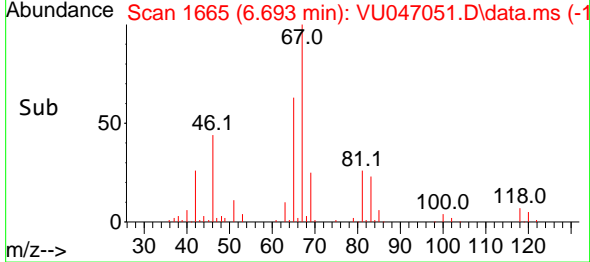
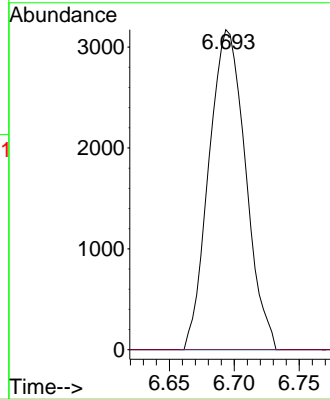
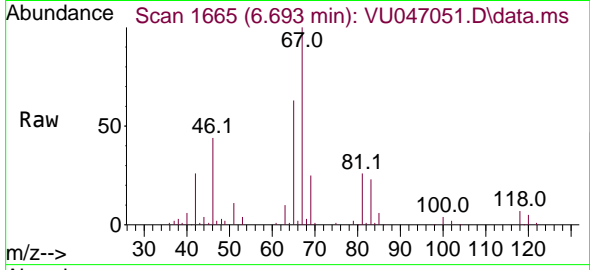




#37  
 1,2-Dichloropropane  
 Concen: 0.744 ug/L  
 RT: 6.693 min Scan# 1696  
 Delta R.T. -0.100 min  
 Lab File: VU047051.D  
 Acq: 04 Feb 2022 17:10

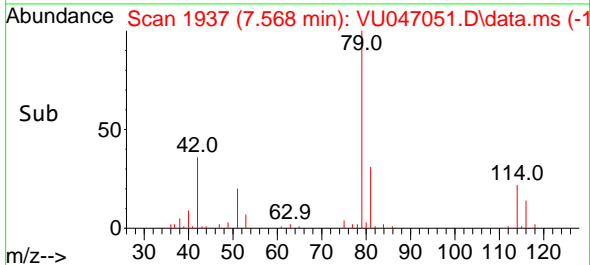
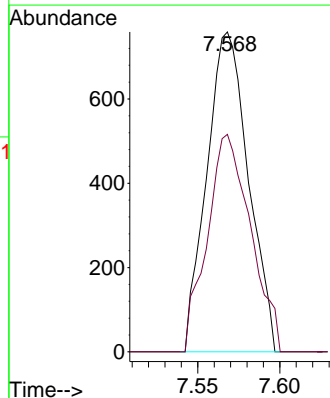
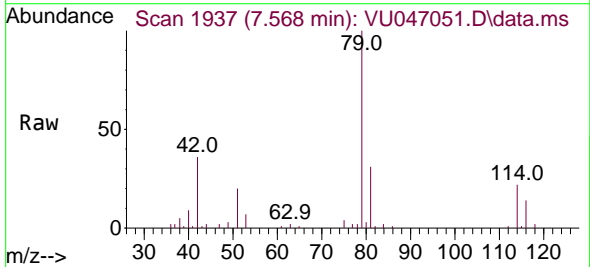
Instrument : MSVOA\_U  
 ClientSampleId :

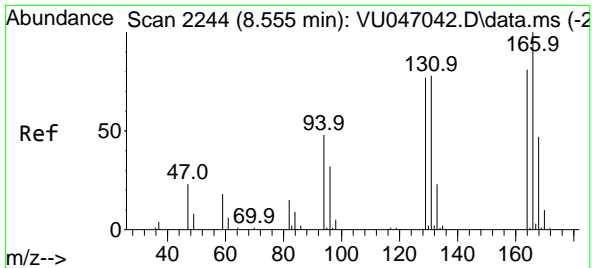
Tgt Ion: 63 Resp: 6230  
 Ion Ratio Lower Upper  
 63 100  
 112 0.0 4.0 6.0#



#39  
 cis-1,3-Dichloropropene  
 Concen: 0.123 ug/L  
 RT: 7.568 min Scan# 1937  
 Delta R.T. -0.042 min  
 Lab File: VU047051.D  
 Acq: 04 Feb 2022 17:10

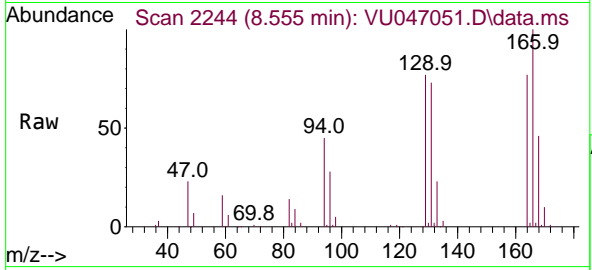
Tgt Ion: 75 Resp: 1337  
 Ion Ratio Lower Upper  
 75 100  
 77 68.0 21.6 40.2#



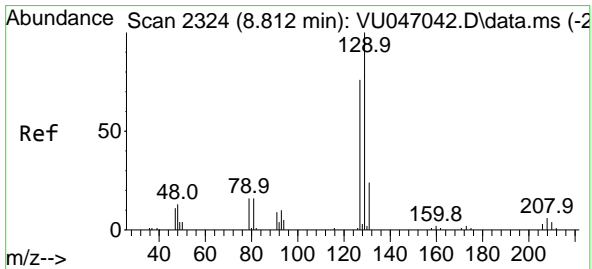
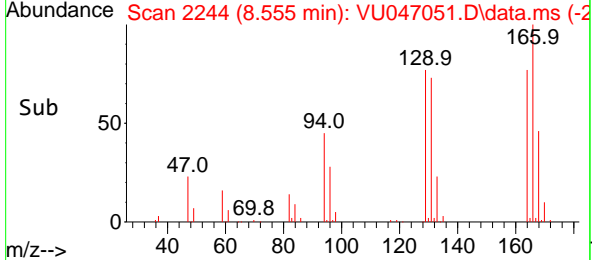
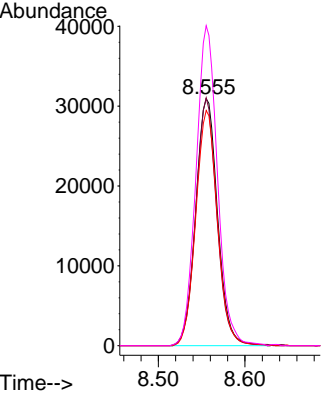


#47  
 Tetrachloroethene  
 Concen: 8.732 ug/L  
 RT: 8.555 min Scan# 21  
 Delta R.T. 0.000 min  
 Lab File: VU047051.D  
 Acq: 04 Feb 2022 17:10

Instrument :  
 MSVOA\_U  
 ClientSampleId :

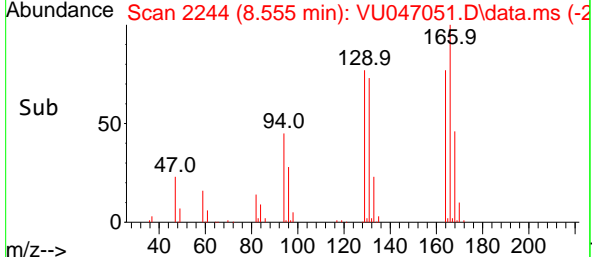
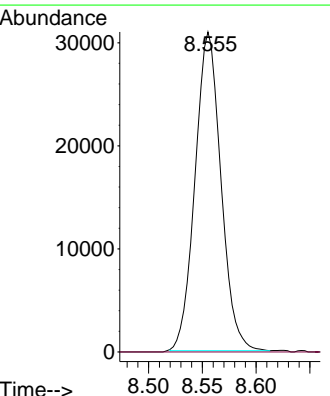
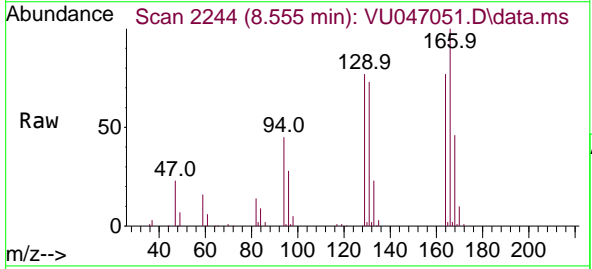


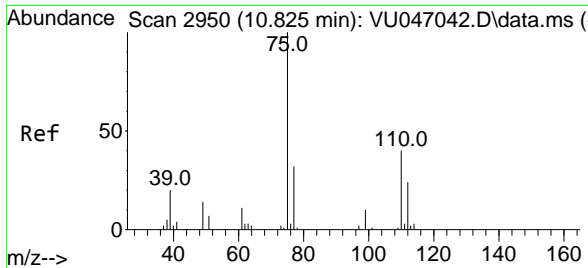
Tgt Ion:164 Resp: 54213  
 Ion Ratio Lower Upper  
 164 100  
 129 100.3 66.5 123.5  
 131 95.2 67.5 125.4  
 166 129.6 86.6 160.8



#49  
 Dibromochloromethane  
 Concen: 7.106 ug/L  
 RT: 8.555 min Scan# 2244  
 Delta R.T. -0.257 min  
 Lab File: VU047051.D  
 Acq: 04 Feb 2022 17:10

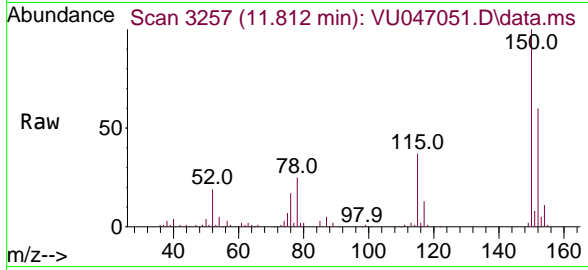
Tgt Ion:129 Resp: 51675  
 Ion Ratio Lower Upper  
 129 100  
 127 0.0 53.4 99.2#





#61  
 1,2,3-Trichloropropane  
 Concen: 1.292 ug/L  
 RT: 11.812 min Scan# 31  
 Delta R.T. 0.987 min  
 Lab File: VU047051.D  
 Acq: 04 Feb 2022 17:10

Instrument :  
 MSVOA\_U  
 ClientSampleId :



Tgt Ion: 75 Resp: 5744

Ion	Ratio	Lower	Upper
75	100		
110	1.9	31.7	47.5#
77	30.3	26.1	39.1

