

Data Path : Z:\voasrv\HPCHEM1\MSVOA_U\Data\VU021025\
 Data File : VU063231.D
 Acq On : 10 Feb 2025 20:54
 Operator : MD/SY
 Sample : VSTDCCC010
 Misc : 25.0mL/MSVOA_U/WATER
 ALS Vial : 19 Sample Multiplier: 1

Instrument :
 MSVOA_U
ClientSampleId :

Quant Time: Feb 11 04:30:09 2025
 Quant Method : Z:\voasrv\HPCHEM1\MSVOA_U\Method\524U021025DW.M
 Quant Title : METHOD 524.2 VOLATILES DRINKING WATER
 QLast Update : Tue Feb 11 04:17:17 2025
 Response via : Initial Calibration

Compound	R.T.	QI on	Response	Conc	Units	Dev(Min)
Internal Standards						
1) Fluorobenzene	6.107	96	58046	1.000	ug/l	# 0.00
System Monitoring Compounds						
57) 4-Bromofluorobenzene	10.624	95	20765	1.085	ug/l	0.00
Spiked Amount	1.000		Recovery	=	108.000%	
68) 1,2-Dichlorobenzene-d4	12.184	152	20492	1.029	ug/l	0.00
Spiked Amount	1.000		Recovery	=	103.000%	
Target Compounds						
						Qvalue
2) Dichlorodifluoromethane	1.380	85	176432	9.355	ug/l	100
3) Chloromethane	1.515	50	196633	9.053	ug/l	97
4) Vinyl Chloride	1.599	62	204165	9.501	ug/l	100
5) Bromomethane	1.840	94	108228	10.890	ug/l	98
6) Chloroethane	1.920	64	123053	9.092	ug/l	98
7) Trichlorofluoromethane	2.126	101	243498	9.563	ug/l	99
8) 1,1,2-Trichloro-1,2,2-...	2.570	101	137233	9.495	ug/l	99
9) 1,1-Dichloroethene	2.567	96	141614	9.617	ug/l	99
10) Iodomethane	2.708	142	232265	10.032	ug/l	99
11) Allyl Chloride	2.911	41	200425	9.474	ug/l	99
12) Acrylonitrile	3.300	53	75844	22.329	ug/l	100
13) Acetone	2.612	43	130426	49.937	ug/l	99
14) Carbon Disulfide	2.782	76	480834	9.338	ug/l	99
15) Methylene Chloride	3.030	84	174994	9.619	ug/l	99
16) trans-1,2-Dichloroethene	3.338	96	164065	9.761	ug/l	99
17) 1,1-Dichloroethane	3.853	63	305345	9.638	ug/l	100
18) 2-Butanone	4.686	43	226899	54.586	ug/l	100
19) Cyclohexane	5.374	56	226501	8.897	ug/l	86
20) Methylcyclohexane	6.750	83	260433	10.317	ug/l	100
21) 2,2-Dichloropropane	4.647	77	226891	9.180	ug/l	99
22) cis-1,2-Dichloroethene	4.650	96	181812	10.012	ug/l	100
23) Diethyl Ether	2.367	59	122874	9.724	ug/l	100
24) tert-Butyl Alcohol	3.161	59	134480	104.515	ug/l	100
25) Methyl tert-Butyl Ether	3.348	73	388082	10.551	ug/l	99
26) Bromochloromethane	4.959	128	79830	10.057	ug/l	98
27) Chloroform	5.071	83	311275	9.736	ug/l	100
28) 1,1,1-Trichloroethane	5.303	97	252423	9.747	ug/l	99
29) 1,1-Dichloropropene	5.512	75	232502	10.023	ug/l	100
30) Carbon Tetrachloride	5.512	117	218463	9.836	ug/l	97
31) Isopropyl Ether	3.975	45	457226	10.109	ug/l	100
32) Ethyl-t-butyl ether	4.483	59	423524	10.297	ug/l	99
33) Tert-Amyl methyl ether	5.927	73	391316	10.889	ug/l	100
34) Propionitrile	4.753	54	72617	57.921	ug/l	97
35) Benzene	5.759	78	704143	9.873	ug/l	99
36) 1,2-Dichloroethane	5.779	62	204095	9.915	ug/l	99
37) Trichloroethene	6.531	130	165166	9.738	ug/l	99
38) 1,2-Dichloropropane	6.775	63	184933	9.907	ug/l	99
39) Methacrylonitrile	4.959	41	56502	12.093	ug/l	96
40) Methyl acrylate	4.833	55	97926	11.372	ug/l	97
41) Tetrahydrofuran	5.039	42	59857	22.028	ug/l	98
42) 1-Chlorobutane	5.444	56	318733	10.043	ug/l	100
43) Dibromomethane	6.904	93	95134	10.064	ug/l	99
44) Bromodichloromethane	7.094	83	225708	10.259	ug/l	98

Data Path : Z:\voasrv\HPCHEM1\MSVOA_U\Data\VU021025\
 Data File : VU063231.D
 Acq On : 10 Feb 2025 20:54
 Operator : MD/SY
 Sample : VSTDCCC010
 Misc : 25.0mL/MSVOA_U/WATER
 ALS Vial : 19 Sample Multiplier: 1

Instrument :
 MSVOA_U
ClientSampleId :

Quant Time: Feb 11 04:30:09 2025
 Quant Method : Z:\voasrv\HPCHEM1\MSVOA_U\Method\524U021025DW.M
 Quant Title : METHOD 524.2 VOLATILES DRINKING WATER
 QLast Update : Tue Feb 11 04:17:17 2025
 Response via : Initial Calibration

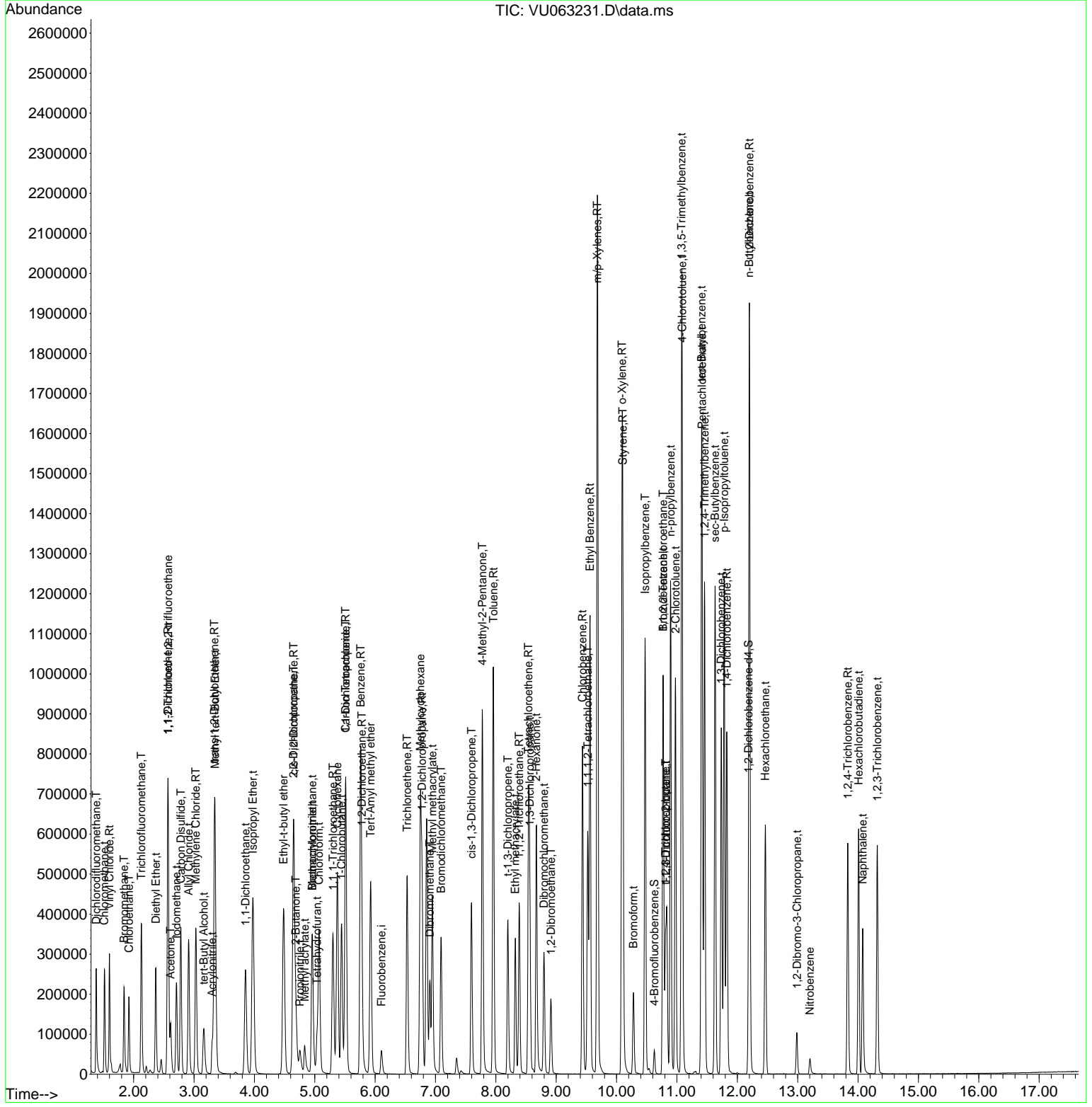
Compound	R. T.	QI on	Response	Conc	Units	Dev(Min)
45) 4-Methyl -2-Pentanone	7.775	43	572626	57.782	ug/l	100
46) t-1, 4-Di chloro-2-butene	10.814	75	227746	48.886	ug/l #	53
47) Methyl methacrylate	6.949	69	184386	23.158	ug/l	99
48) Ethyl methacrylate	8.322	69	178914	11.967	ug/l	99
49) Toluene	7.959	92	424364	10.346	ug/l	99
50) t-1, 3-Di chloropropene	8.200	75	217346	10.790	ug/l	100
51) cis-1, 3-Di chloropropene	7.595	75	255685	10.276	ug/l	99
52) 1, 1, 2-Tri chloroethane	8.386	97	133552	10.479	ug/l	99
53) 1, 3-Di chloropropane	8.563	76	234480	10.363	ug/l	99
54) 2-Hexanone	8.669	43	394615	58.350	ug/l	99
55) Dibromochloromethane	8.798	129	155344	10.594	ug/l	99
56) 1, 2-Dibromoethane	8.914	107	128027	10.710	ug/l	99
58) Tetrachloroethene	8.541	164	140811	10.074	ug/l	98
59) Chlorobenzene	9.434	112	437137	10.099	ug/l	100
60) 1, 1, 1, 2-Tetrachloroethane	9.521	131	158239	10.171	ug/l	99
61) Pentachloroethane	11.415	117	137502	9.894	ug/l	99
62) Hexachloroethane	12.463	117	125289	10.190	ug/l	100
63) Ethyl Benzene	9.560	91	802752	10.754	ug/l	100
64) m/p-Xylenes	9.682	106	607939	21.803	ug/l	99
65) o-Xylene	10.090	106	294222	10.779	ug/l	98
66) Styrene	10.103	104	491754	11.320	ug/l	99
67) Bromoform	10.280	173	91338	10.976	ug/l	100
69) Isopropyl benzene	10.473	105	693458	10.806	ug/l	99
70) 1, 1, 2, 2-Tetrachloroethane	10.769	83	181075	10.541	ug/l	100
71) 1, 2, 3-Tri chloropropane	10.814	75	227746	17.647	ug/l #	73
72) Bromobenzene	10.772	156	180941	10.465	ug/l	100
73) n-propyl benzene	10.894	120	207215	11.278	ug/l	98
74) 2-Chlorotoluene	10.975	126	183507	10.837	ug/l	97
75) 1, 3, 5-Tri methyl benzene	11.078	105	661158	11.119	ug/l	100
76) 4-Chlorotoluene	11.087	126	189495	10.913	ug/l	96
77) tert-Butyl benzene	11.409	119	636025	10.576	ug/l	100
78) 1, 2, 4-Tri methyl benzene	11.457	105	668611	11.332	ug/l	99
79) sec-Butyl benzene	11.631	105	837377	10.936	ug/l	100
80) Nitrobenzene	13.203	77	23403	46.299	ug/l #	98
81) p-Isopropyl toluene	11.782	119	675250	11.175	ug/l	100
82) 1, 3-Di chlorobenzene	11.733	146	348126	10.380	ug/l	100
83) 1, 4-Di chlorobenzene	11.827	146	351795	10.724	ug/l	99
84) n-Butyl benzene	12.196	91	615701	11.363	ug/l	99
85) 1, 2-Di chlorobenzene	12.200	146	338915	10.516	ug/l	99
86) 1, 2-Dibromo-3-Chloropropane	12.987	75	26996	11.196	ug/l	98
87) 1, 2, 4-Tri chlorobenzene	13.830	180	181158	11.525	ug/l	97
88) Hexachlorobutadiene	14.010	225	109859	9.779	ug/l	99
89) Naphthalene	14.077	128	305890	9.363	ug/l	99
90) 1, 2, 3-Tri chlorobenzene	14.319	180	177916	11.568	ug/l	98

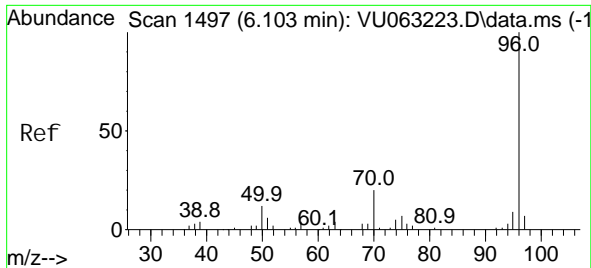
(#) = qualifier out of range (m) = manual integration (+) = signals summed

Data Path : Z:\voasrv\HPCHEM1\MSVOA_U\Data\VU021025\
 Data File : VU063231.D
 Acq On : 10 Feb 2025 20: 54
 Operator : MD/SY
 Sample : VSTDCCO10
 Mi sc : 25. 0mL/MSVOA_U/WATER
 ALS Vial : 19 Sample Multi plier: 1

Instrument :
 MSVOA_U
 ClientSampleId :

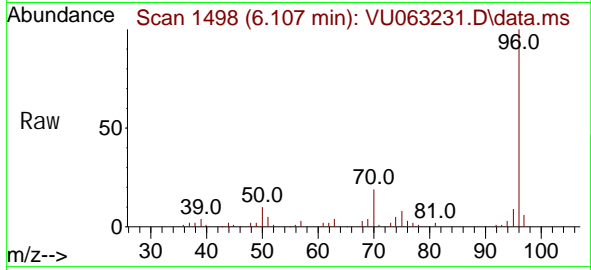
Quant Time: Feb 11 04: 30: 09 2025
 Quant Method : Z:\voasrv\HPCHEM1\MSVOA_U\Method\524U021025DW.M
 Quant Title : METHOD 524.2 VOLATILES DRINKING WATER
 QLast Update : Tue Feb 11 04: 17: 17 2025
 Response via : Initial Calibration



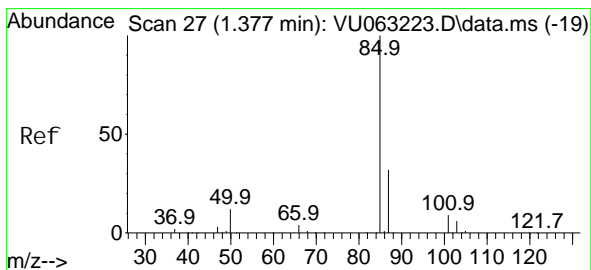
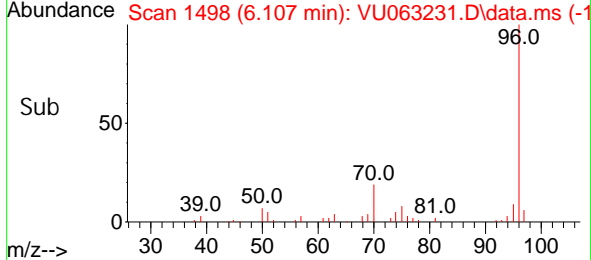
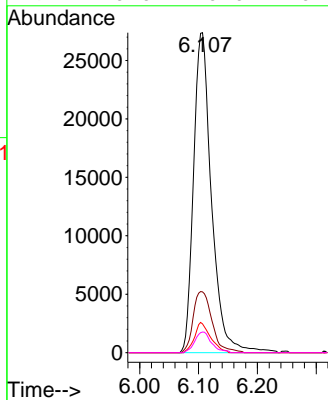


#1
 Fluorobenzene
 Concen: 1.000 ug/l
 RT: 6.107 min Scan# 1497
 Delta R.T. 0.004 min
 Lab File: VU063231.D
 Acq: 10 Feb 2025 20:54

Instrument : MSVOA_U
 ClientSampleId :

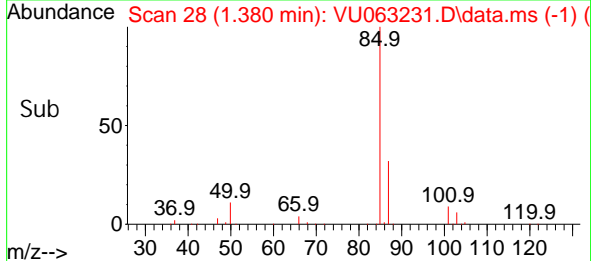
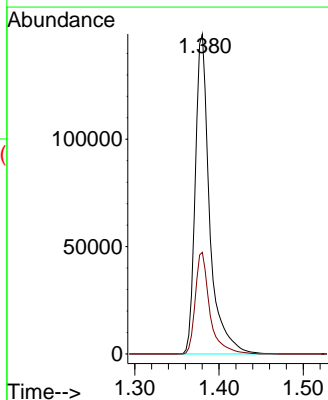
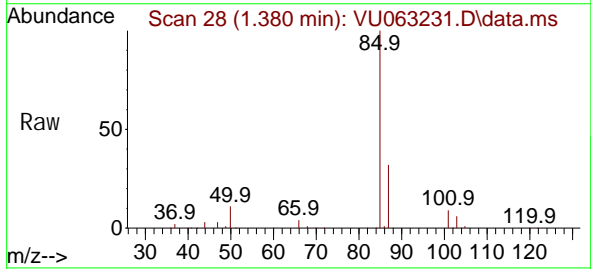


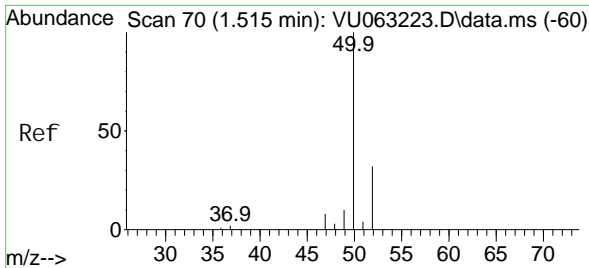
Tgt Ion: 96 Resp: 58046
 Ion Ratio Lower Upper
 96 100
 70 20.1 15.6 23.4
 95 8.4 7.3 10.9
 97 0.0 0.0 0.0



#2
 Dichlorodifluoromethane
 Concen: 9.355 ug/l
 RT: 1.380 min Scan# 28
 Delta R.T. 0.003 min
 Lab File: VU063231.D
 Acq: 10 Feb 2025 20:54

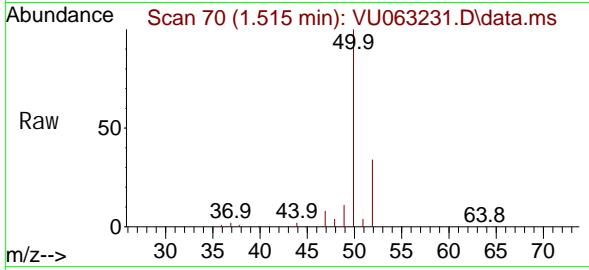
Tgt Ion: 85 Resp: 176432
 Ion Ratio Lower Upper
 85 100
 87 31.8 16.0 48.0



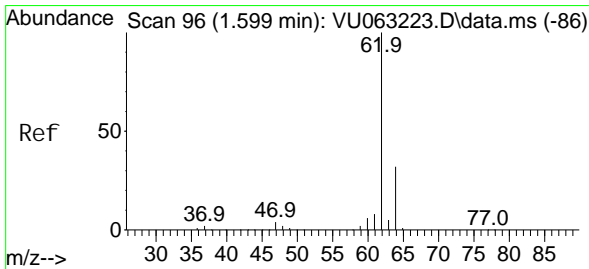
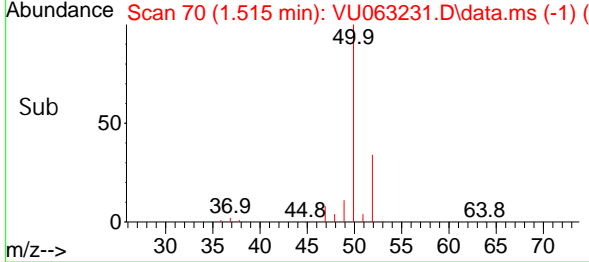
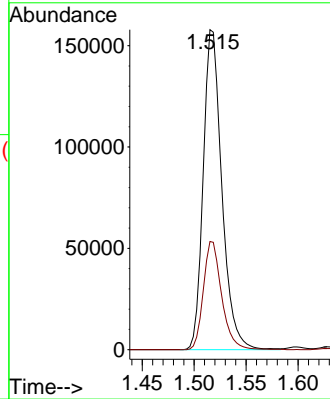


#3
 Chloromethane
 Concen: 9.053 ug/l
 RT: 1.515 min Scan# 70
 Delta R.T. 0.000 min
 Lab File: VU063231.D
 Acq: 10 Feb 2025 20:54

Instrument : MSVOA_U
 ClientSampleId :

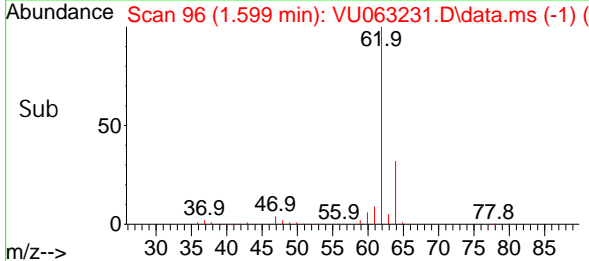
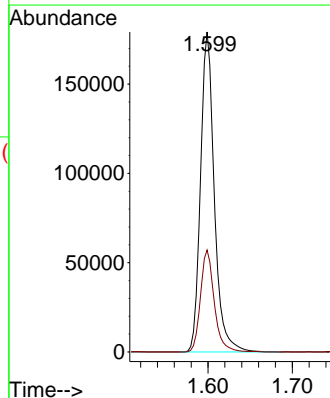
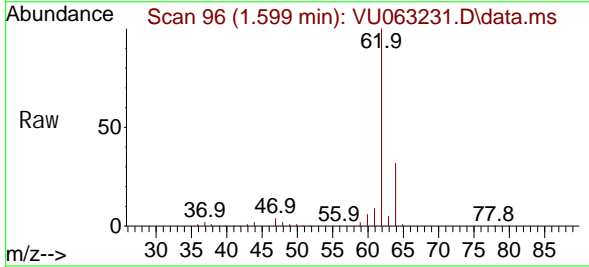


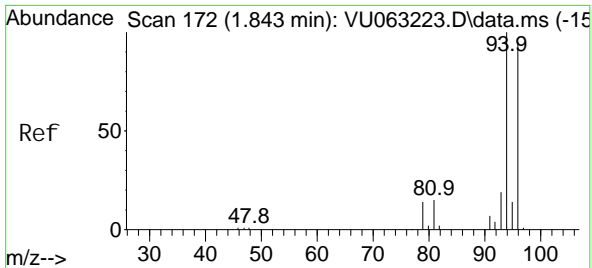
Tgt Ion: 50 Resp: 196633
 Ion Ratio Lower Upper
 50 100
 52 33.8 25.8 38.8



#4
 Vinyl Chloride
 Concen: 9.501 ug/l
 RT: 1.599 min Scan# 96
 Delta R.T. 0.000 min
 Lab File: VU063231.D
 Acq: 10 Feb 2025 20:54

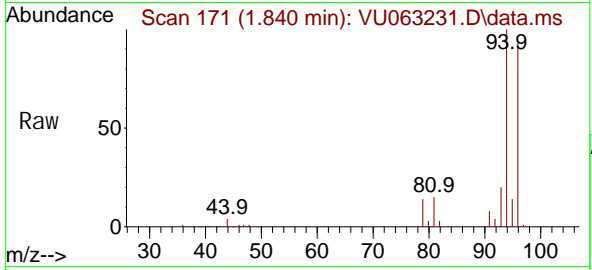
Tgt Ion: 62 Resp: 204165
 Ion Ratio Lower Upper
 62 100
 64 31.8 25.4 38.0



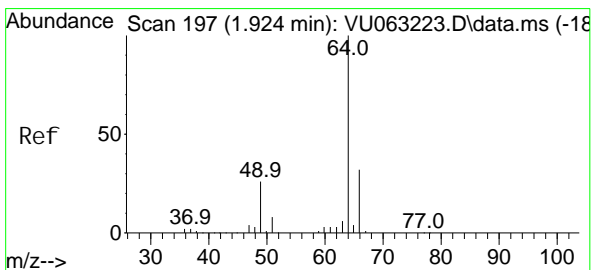
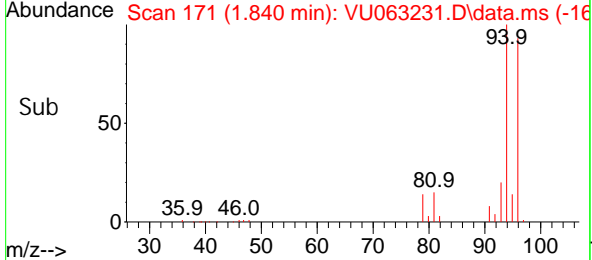
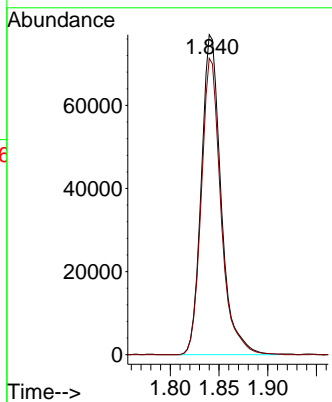


#5
 Bromomethane
 Concen: 10.890 ug/l
 RT: 1.840 min Scan# 11
 Delta R.T. -0.003 min
 Lab File: VU063231.D
 Acq: 10 Feb 2025 20:54

Instrument :
 MSVOA_U
 ClientSampleId :

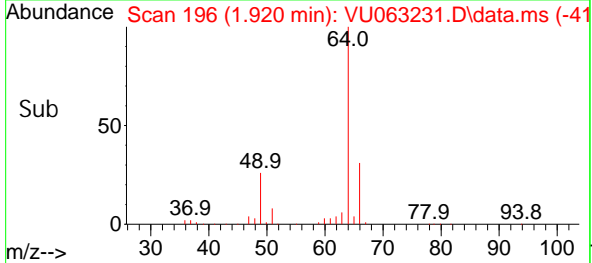
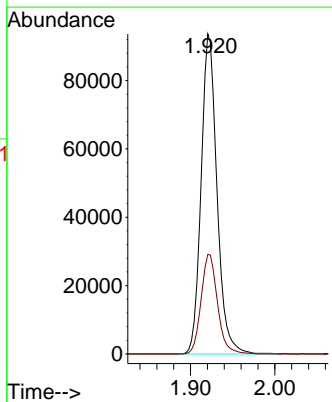
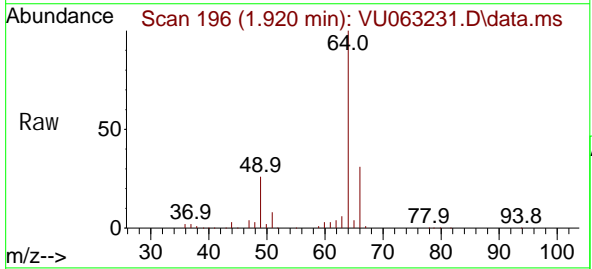


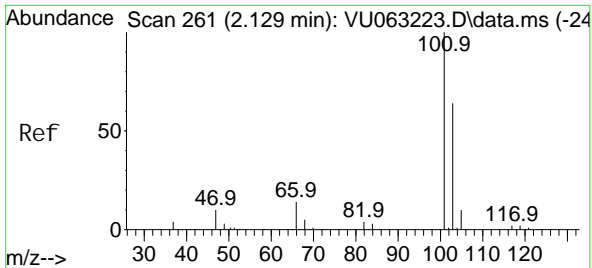
Tgt Ion: 94 Resp: 108228
 Ion Ratio Lower Upper
 94 100
 96 92.6 75.7 113.5



#6
 Chloroethane
 Concen: 9.092 ug/l
 RT: 1.920 min Scan# 196
 Delta R.T. -0.003 min
 Lab File: VU063231.D
 Acq: 10 Feb 2025 20:54

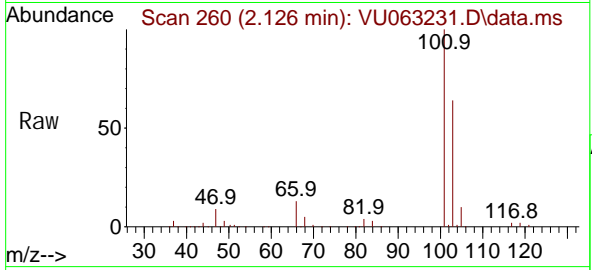
Tgt Ion: 64 Resp: 123053
 Ion Ratio Lower Upper
 64 100
 66 31.1 25.8 38.8



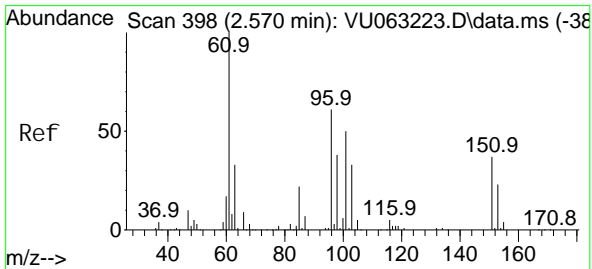
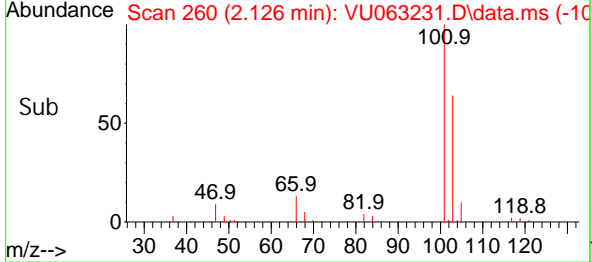
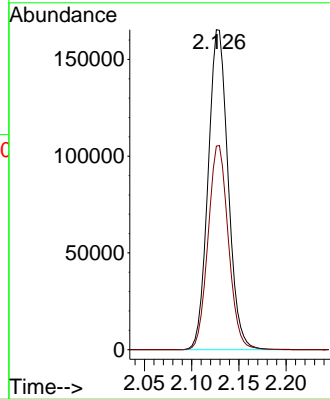


#7
 Trichlorofluoromethane
 Concen: 9.563 ug/l
 RT: 2.126 min Scan# 261
 Delta R.T. -0.003 min
 Lab File: VU063231.D
 Acq: 10 Feb 2025 20:54

Instrument : MSVOA_U
 ClientSampleId :

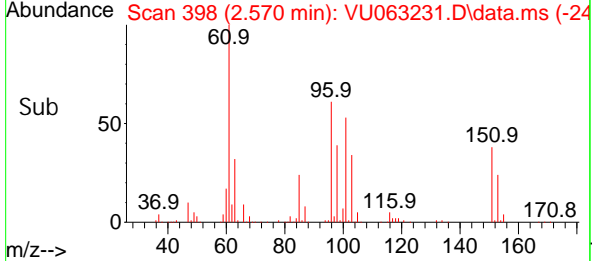
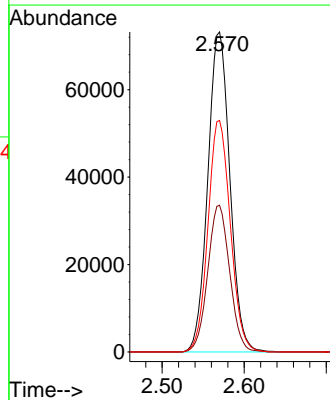
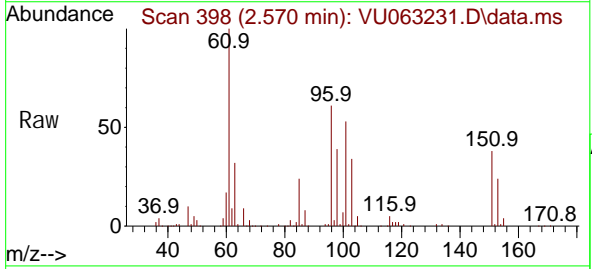


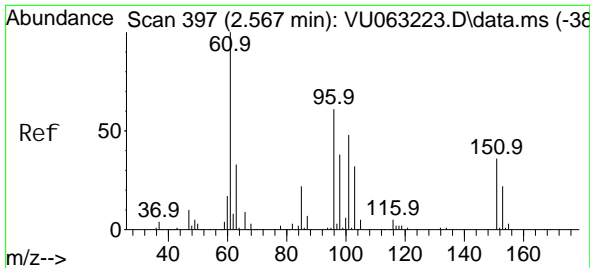
Tgt Ion: 101 Resp: 243498
 Ion Ratio Lower Upper
 101 100
 103 63.6 51.4 77.2



#8
 1,1,2-Trichloro-1,2,2-trifluoroethane
 Concen: 9.495 ug/l
 RT: 2.570 min Scan# 398
 Delta R.T. 0.000 min
 Lab File: VU063231.D
 Acq: 10 Feb 2025 20:54

Tgt Ion: 101 Resp: 137233
 Ion Ratio Lower Upper
 101 100
 85 45.5 35.4 53.0
 151 73.4 58.5 87.7

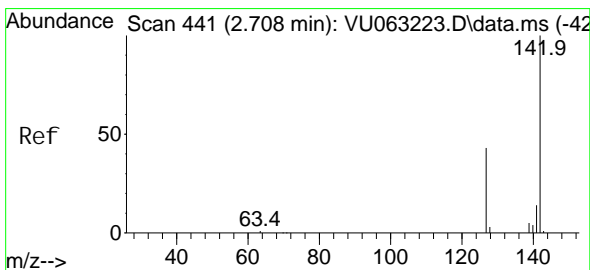
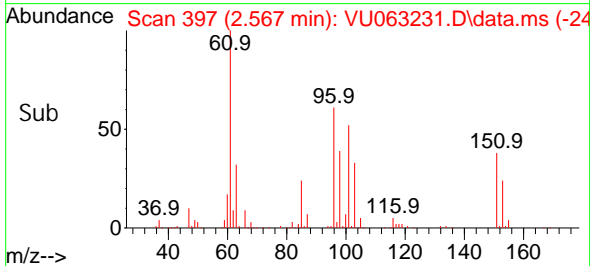
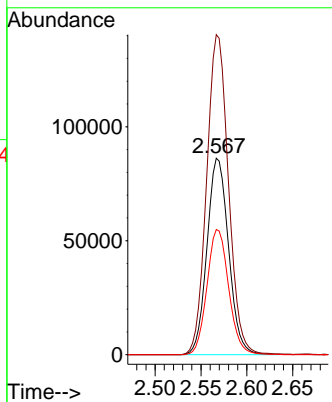
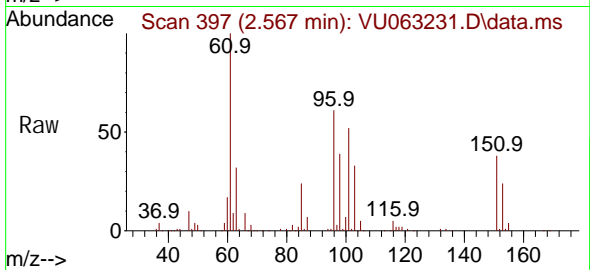




#9
 1,1-Dichloroethene
 Concen: 9.617 ug/l
 RT: 2.567 min Scan# 397
 Delta R.T. 0.000 min
 Lab File: VU063231.D
 Acq: 10 Feb 2025 20:54

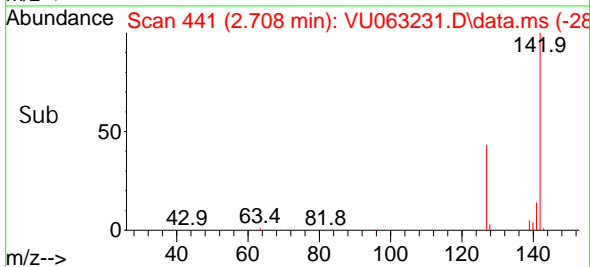
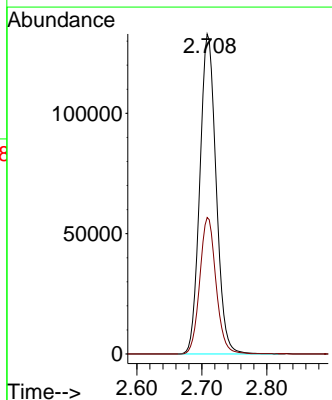
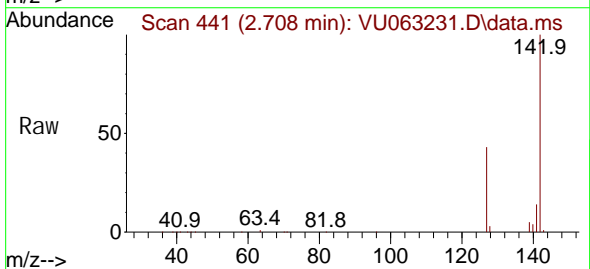
Instrument : MSVOA_U
 ClientSampleId :

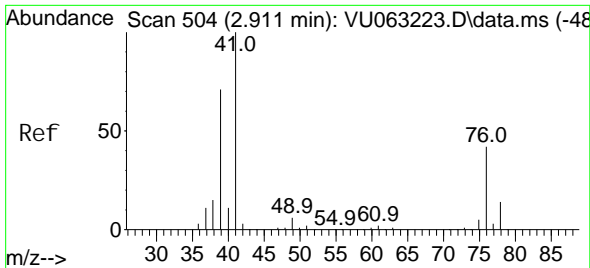
Tgt Ion	Resp	Lower	Upper
96	141614		
96	100		
61	162.9	0.0	492.9
98	63.7	0.0	124.0



#10
 Iodomethane
 Concen: 10.032 ug/l
 RT: 2.708 min Scan# 441
 Delta R.T. 0.000 min
 Lab File: VU063231.D
 Acq: 10 Feb 2025 20:54

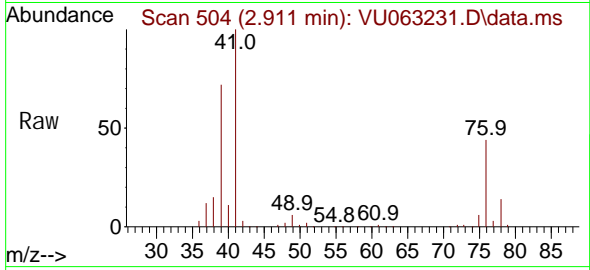
Tgt Ion	Resp	Lower	Upper
142	232265		
142	100		
127	42.6	34.5	51.7



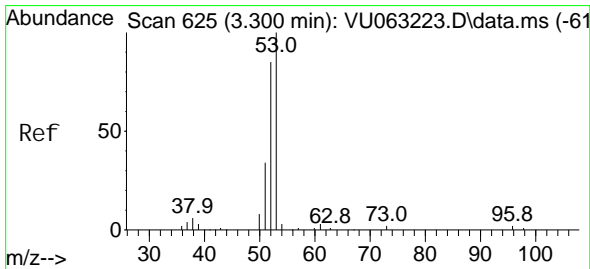
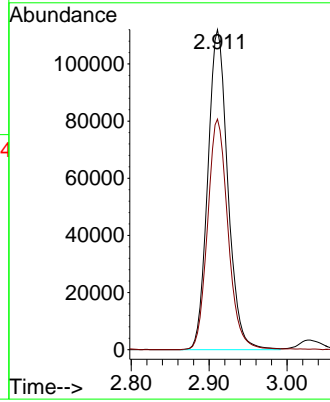
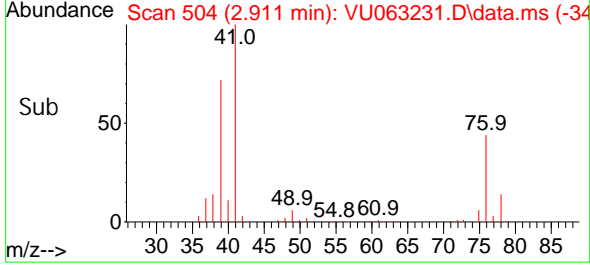


#11
 Allyl Chloride
 Concen: 9.474 ug/l
 RT: 2.911 min Scan# 504
 Delta R.T. 0.000 min
 Lab File: VU063231.D
 Acq: 10 Feb 2025 20:54

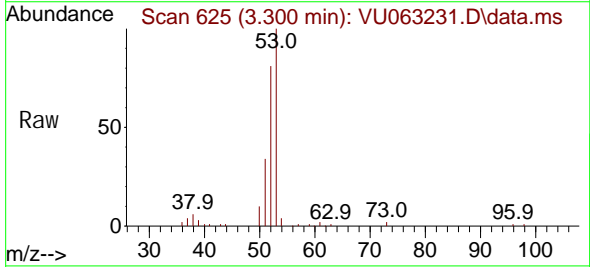
Instrument : MSVOA_U
 Client SampleId :



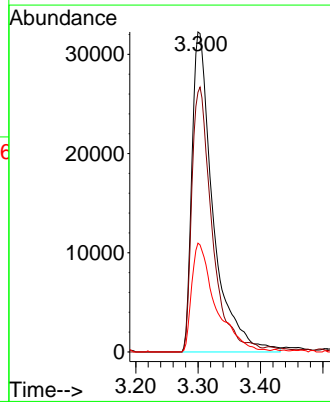
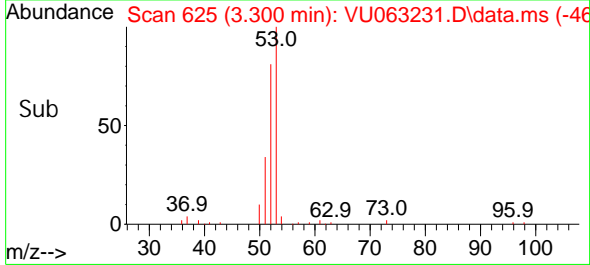
Tgt Ion: 41 Resp: 200425
 Ion Ratio Lower Upper
 41 100
 39 73.6 57.9 86.9

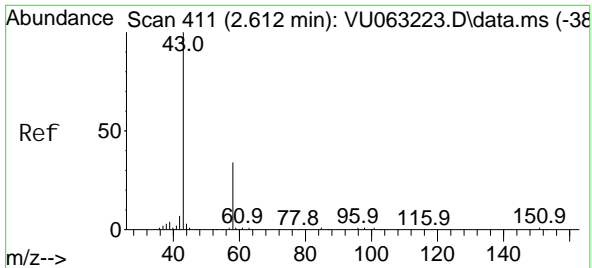


#12
 Acrylonitrile
 Concen: 22.329 ug/l
 RT: 3.300 min Scan# 625
 Delta R.T. 0.000 min
 Lab File: VU063231.D
 Acq: 10 Feb 2025 20:54



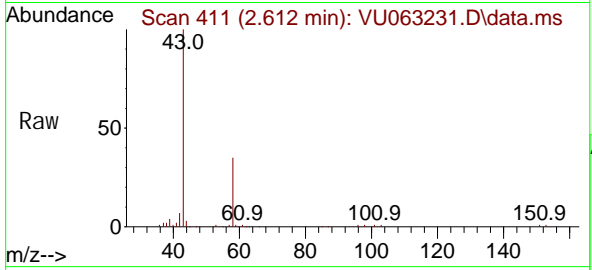
Tgt Ion: 53 Resp: 75844
 Ion Ratio Lower Upper
 53 100
 52 79.6 64.2 96.2
 51 38.5 30.8 46.2



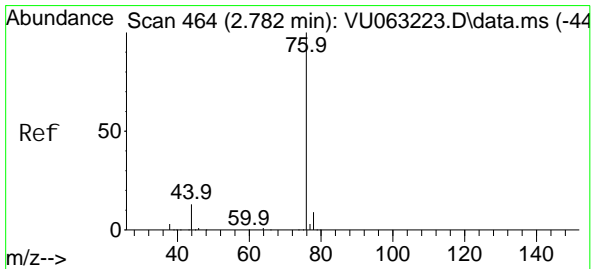
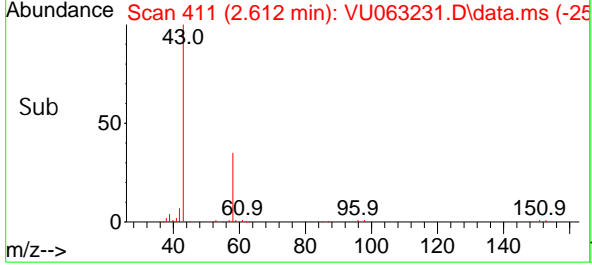
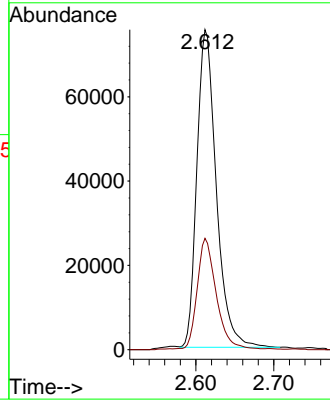


#13
 Acetone
 Concen: 49.937 ug/l
 RT: 2.612 min Scan# 411
 Delta R.T. 0.000 min
 Lab File: VU063231.D
 Acq: 10 Feb 2025 20:54

Instrument : MSVOA_U
 ClientSampleId :

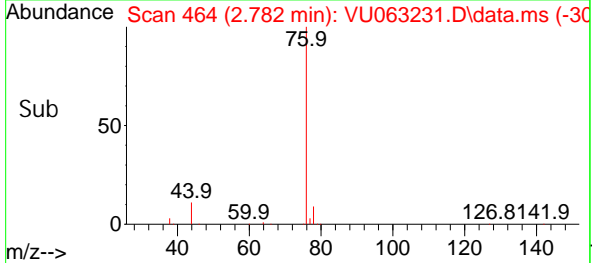
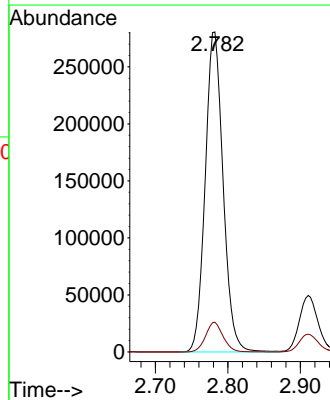
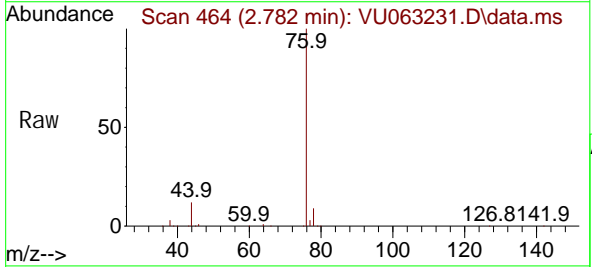


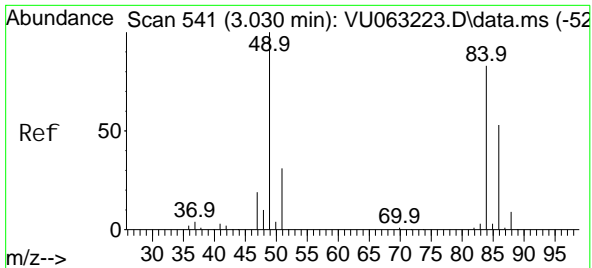
Tgt Ion: 43 Resp: 130426
 Ion Ratio Lower Upper
 43 100
 58 34.9 27.4 41.0



#14
 Carbon Di sul fi de
 Concen: 9.338 ug/l
 RT: 2.782 min Scan# 464
 Delta R.T. 0.000 min
 Lab File: VU063231.D
 Acq: 10 Feb 2025 20:54

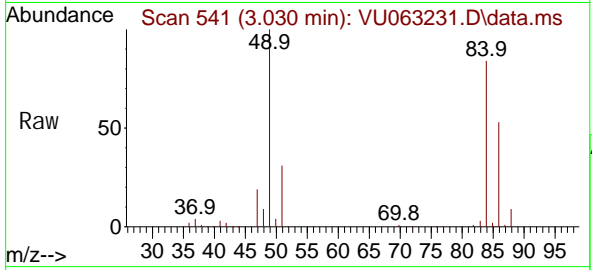
Tgt Ion: 76 Resp: 480834
 Ion Ratio Lower Upper
 76 100
 78 9.3 7.2 10.8





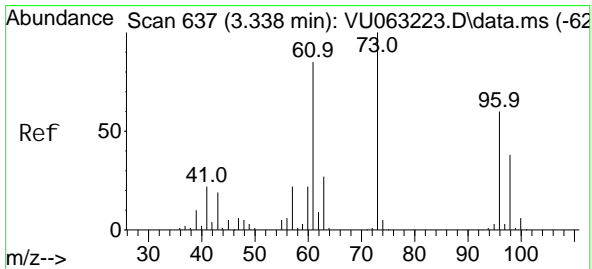
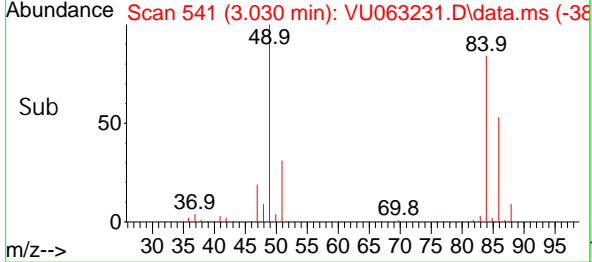
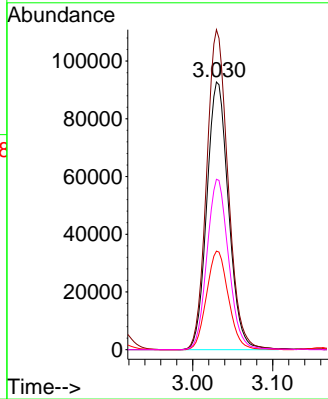
#15
Methylene Chloride
Concen: 9.619 ug/l
RT: 3.030 min Scan# 541
Delta R.T. 0.000 min
Lab File: VU063231.D
Acq: 10 Feb 2025 20: 54

Instrument : MSVOA_U
ClientSampleId :

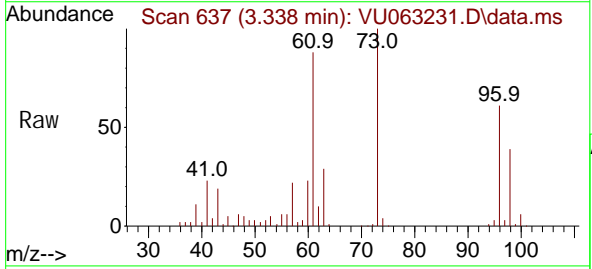


Tgt Ion: 84 Resp: 174994

Ion	Ratio	Lower	Upper
84	100		
49	119.6	96.4	144.6
51	36.9	0.0	74.8
86	63.7	51.3	76.9

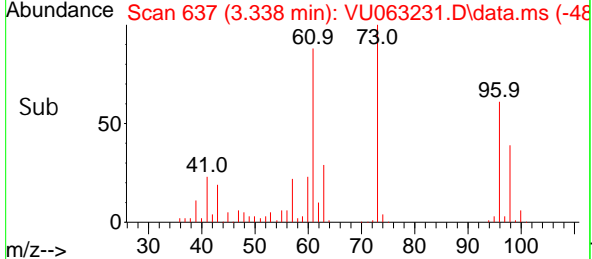
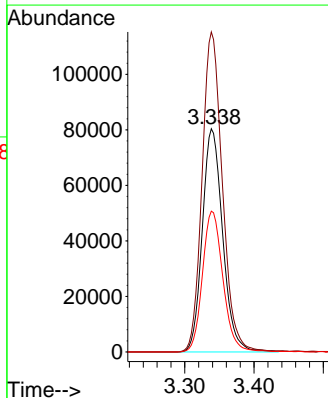


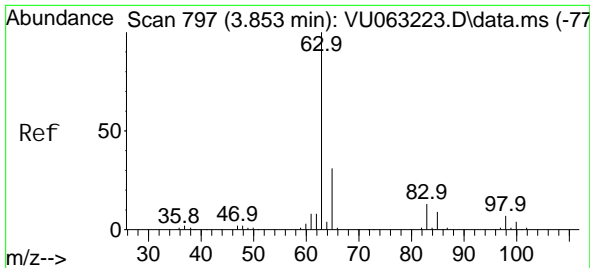
#16
trans-1,2-Dichloroethene
Concen: 9.761 ug/l
RT: 3.338 min Scan# 637
Delta R.T. 0.000 min
Lab File: VU063231.D
Acq: 10 Feb 2025 20: 54



Tgt Ion: 96 Resp: 164065

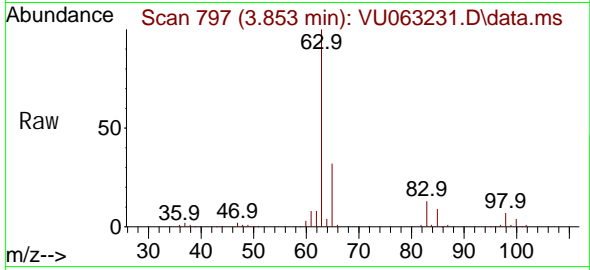
Ion	Ratio	Lower	Upper
96	100		
61	143.4	113.4	170.2
98	63.1	51.2	76.8





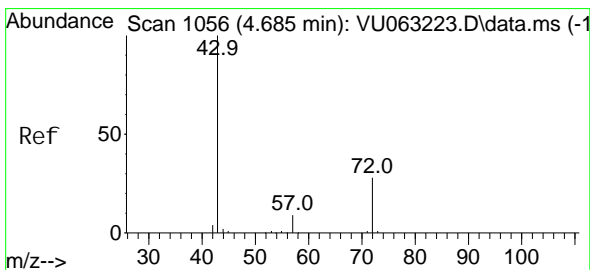
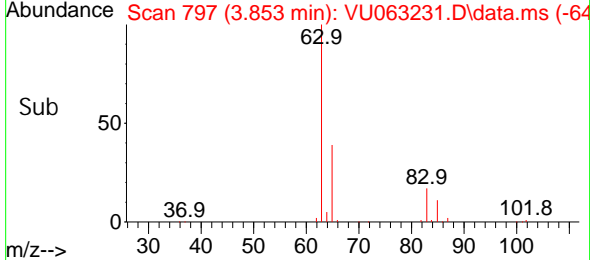
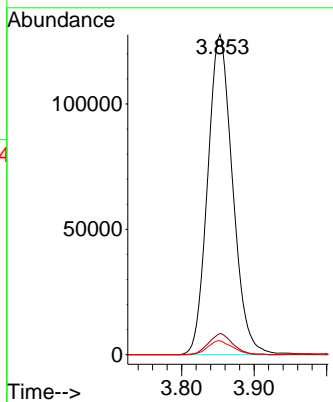
#17
 1,1-Dichloroethane
 Concen: 9.638 ug/l
 RT: 3.853 min Scan# 797
 Delta R.T. 0.000 min
 Lab File: VU063231.D
 Acq: 10 Feb 2025 20:54

Instrument : MSVOA_U
 ClientSampleId :



Tgt Ion: 63 Resp: 305345

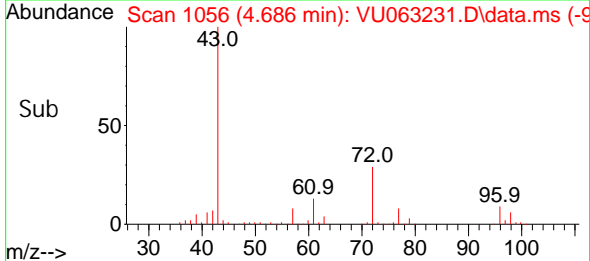
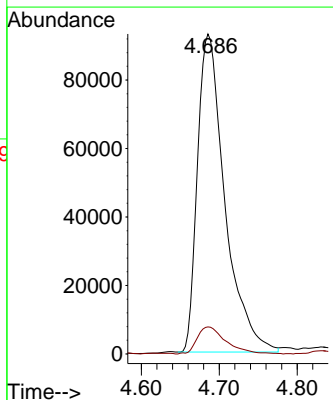
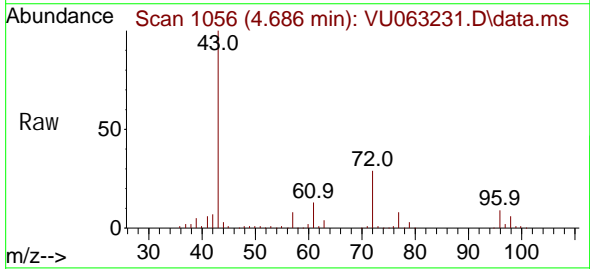
Ion	Ratio	Lower	Upper
63	100		
98	6.6	3.3	9.9
100	4.4	2.1	6.2

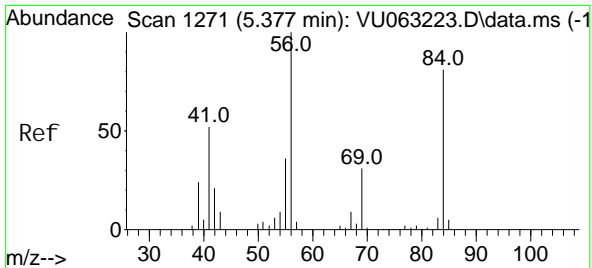


#18
 2-Butanone
 Concen: 54.586 ug/l
 RT: 4.686 min Scan# 1056
 Delta R.T. 0.000 min
 Lab File: VU063231.D
 Acq: 10 Feb 2025 20:54

Tgt Ion: 43 Resp: 226899

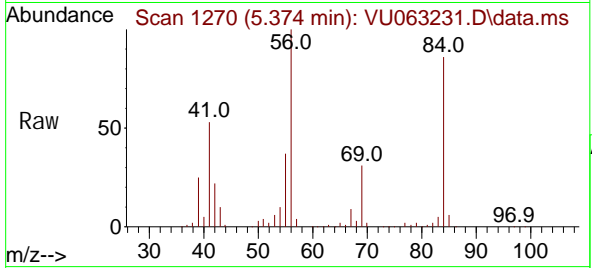
Ion	Ratio	Lower	Upper
43	100		
57	8.5	0.0	17.0





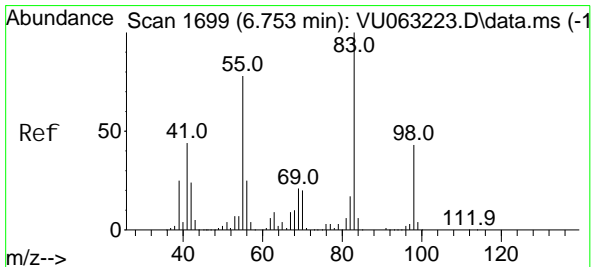
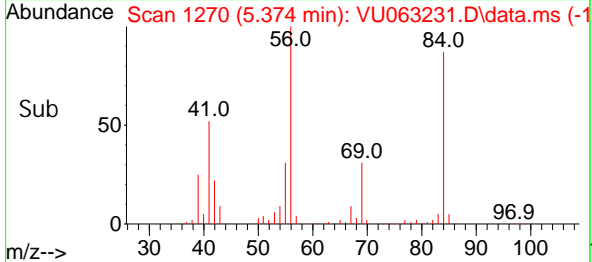
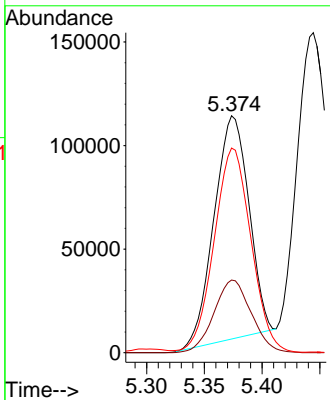
#19
 Cycl ohexane
 Concen: 8.897 ug/l
 RT: 5.374 min Scan# 11
 Delta R.T. -0.003 min
 Lab File: VU063231.D
 Acq: 10 Feb 2025 20:54

Instrument :
 MSVOA_U
 ClientSampleId :



Tgt Ion: 56 Resp: 226501

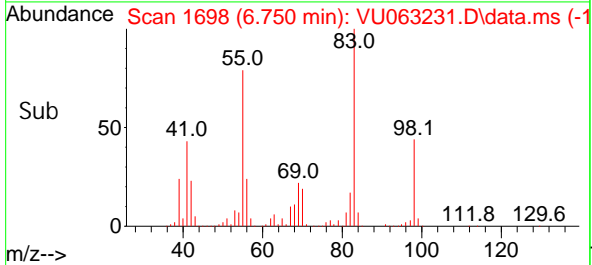
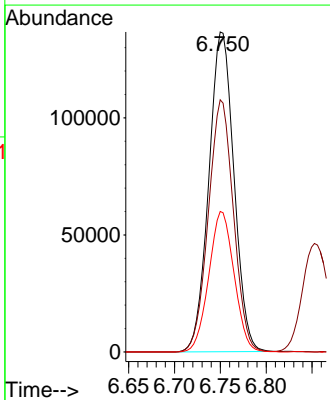
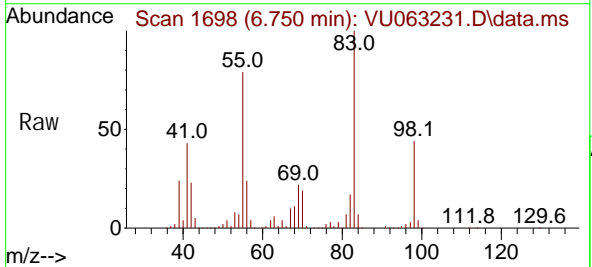
Ion	Ratio	Lower	Upper
56	100		
69	34.7	24.5	36.7
84	95.6	65.2	97.8

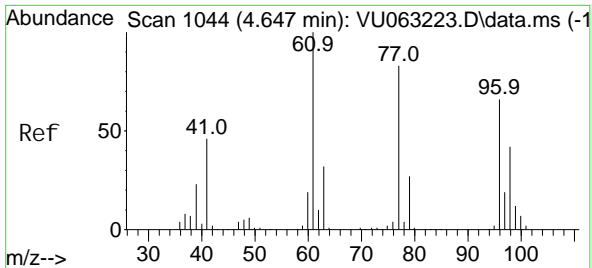


#20
 Methyl cycl ohexane
 Concen: 10.317 ug/l
 RT: 6.750 min Scan# 1698
 Delta R.T. -0.003 min
 Lab File: VU063231.D
 Acq: 10 Feb 2025 20:54

Tgt Ion: 83 Resp: 260433

Ion	Ratio	Lower	Upper
83	100		
55	78.7	63.1	94.7
98	44.2	35.2	52.8

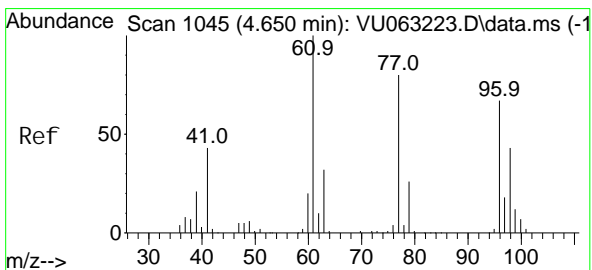
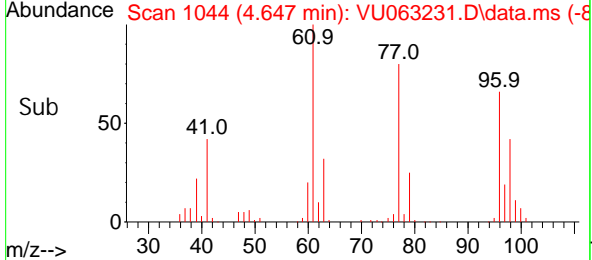
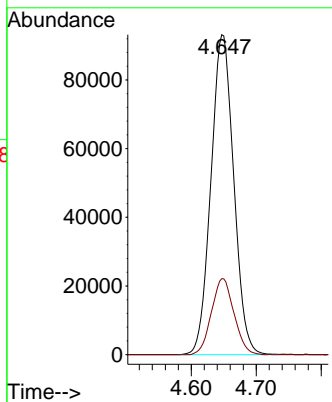
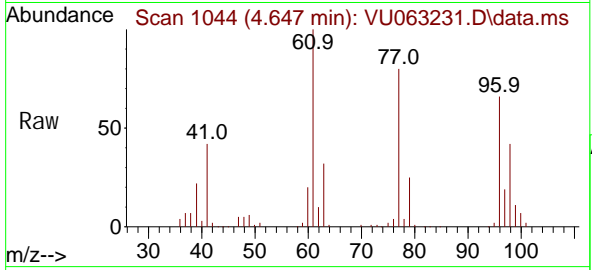




#21
 2, 2-Di chl oropropane
 Concen: 9.180 ug/l
 RT: 4.647 min Scan# 1044
 Delta R.T. 0.000 min
 Lab File: VU063231.D
 Acq: 10 Feb 2025 20: 54

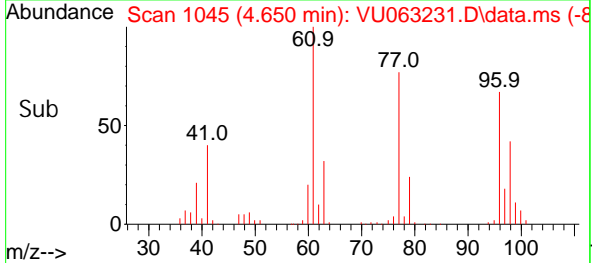
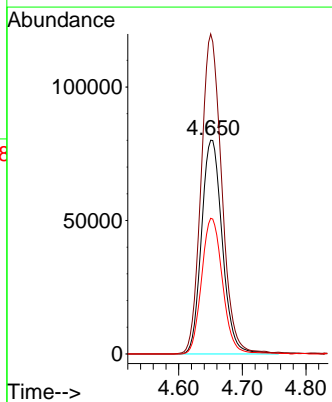
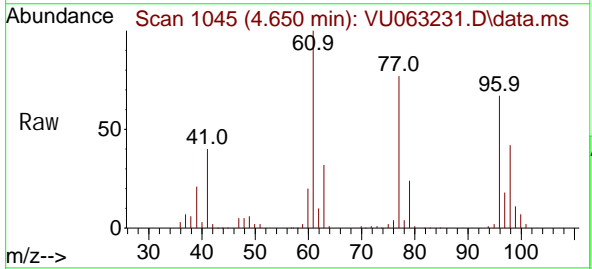
Instrument : MSVOA_U
 ClientSampleId :

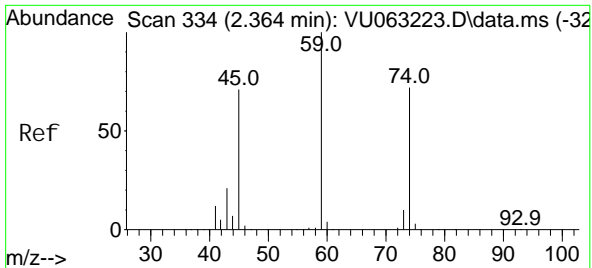
Tgt Ion: 77 Resp: 226891
 Ion Ratio Lower Upper
 77 100
 97 23.5 18.5 27.7



#22
 ci s-1, 2-Di chl oroethene
 Concen: 10.012 ug/l
 RT: 4.650 min Scan# 1045
 Delta R.T. 0.000 min
 Lab File: VU063231.D
 Acq: 10 Feb 2025 20: 54

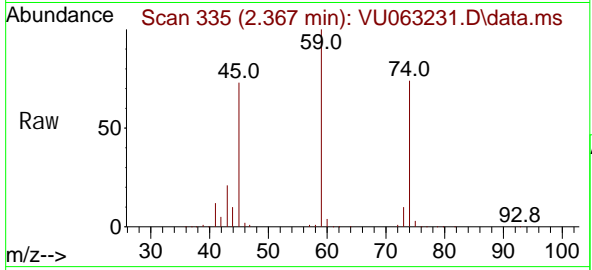
Tgt Ion: 96 Resp: 181812
 Ion Ratio Lower Upper
 96 100
 61 148.5 0.0 373.3
 98 63.8 31.9 95.9





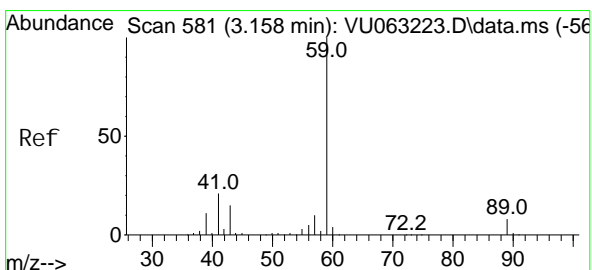
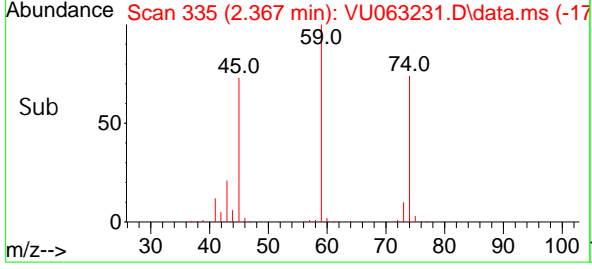
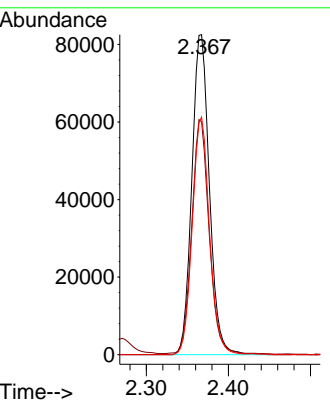
#23
 Diethyl Ether
 Concen: 9.724 ug/l
 RT: 2.367 min Scan# 335
 Delta R.T. 0.003 min
 Lab File: VU063231.D
 Acq: 10 Feb 2025 20:54

Instrument : MSVOA_U
 ClientSampleId :



Tgt Ion: 59 Resp: 122874

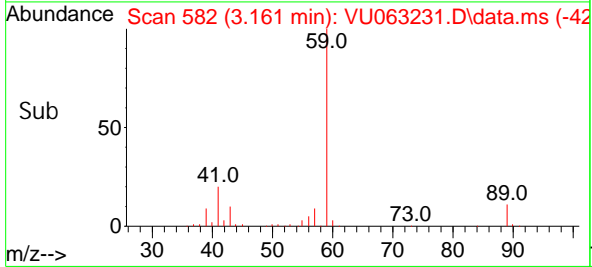
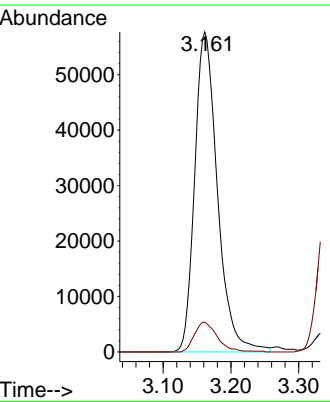
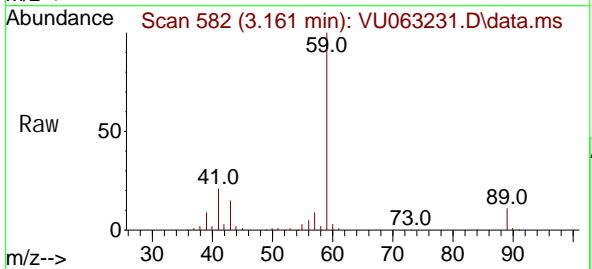
Ion	Ratio	Lower	Upper
59	100		
45	72.3	57.8	86.6
74	72.8	57.7	86.5

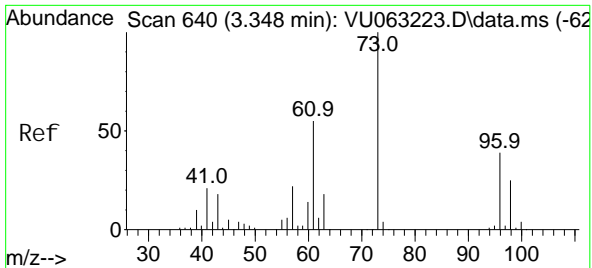


#24
 tert-Butyl Alcohol
 Concen: 104.515 ug/l
 RT: 3.161 min Scan# 582
 Delta R.T. 0.003 min
 Lab File: VU063231.D
 Acq: 10 Feb 2025 20:54

Tgt Ion: 59 Resp: 134480

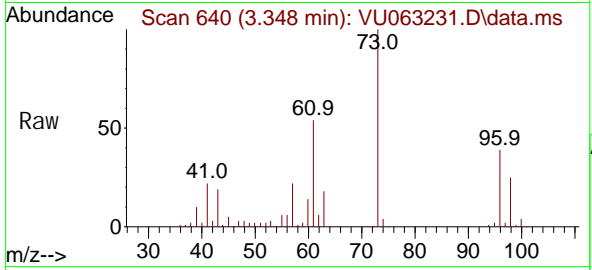
Ion	Ratio	Lower	Upper
59	100		
57	9.3	7.5	11.3



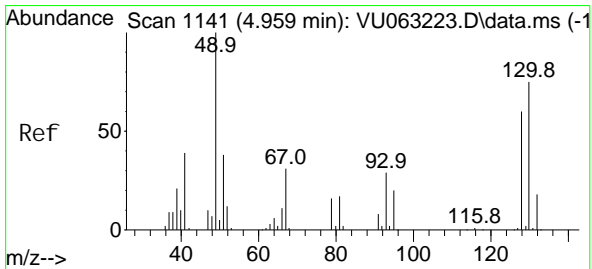
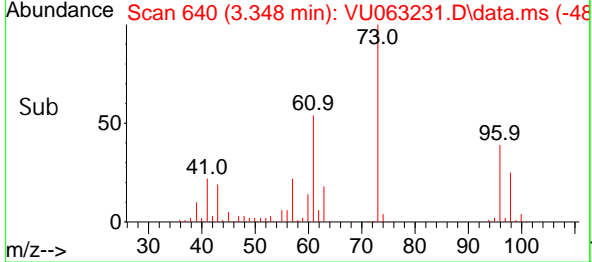
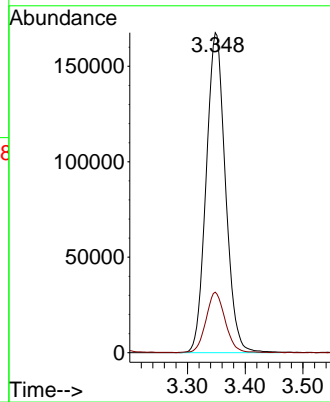


#25
 Methyl tert-Butyl Ether
 Concen: 10.551 ug/l
 RT: 3.348 min Scan# 640
 Delta R.T. 0.000 min
 Lab File: VU063231.D
 Acq: 10 Feb 2025 20:54

Instrument : MSVOA_U
 ClientSampleId :

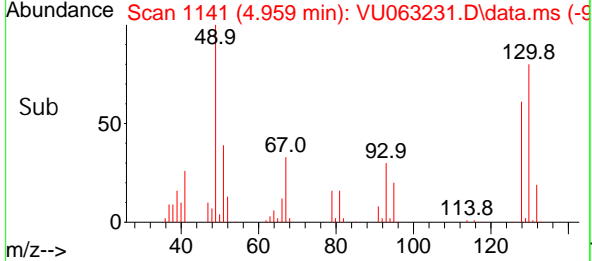
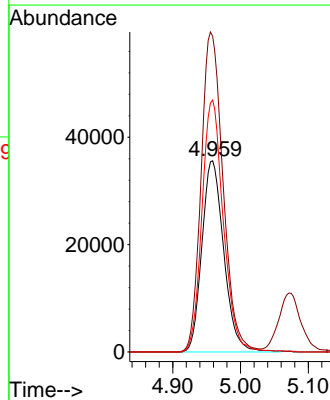
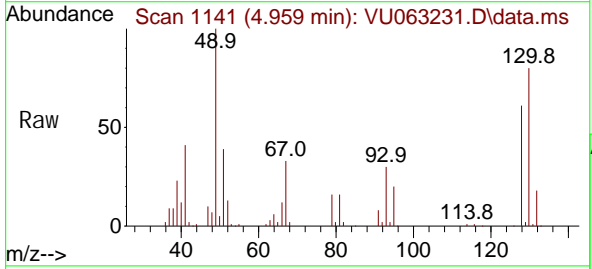


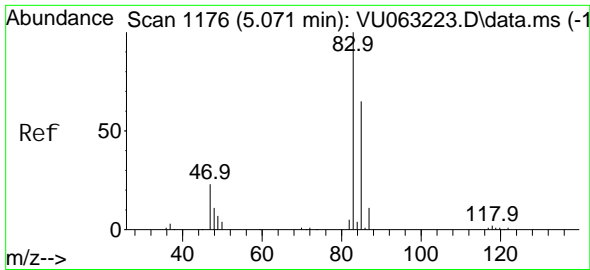
Tgt Ion: 73 Resp: 388082
 Ion Ratio Lower Upper
 73 100
 43 19.0 14.9 22.3



#26
 Bromochloromethane
 Concen: 10.057 ug/l
 RT: 4.959 min Scan# 1141
 Delta R.T. 0.000 min
 Lab File: VU063231.D
 Acq: 10 Feb 2025 20:54

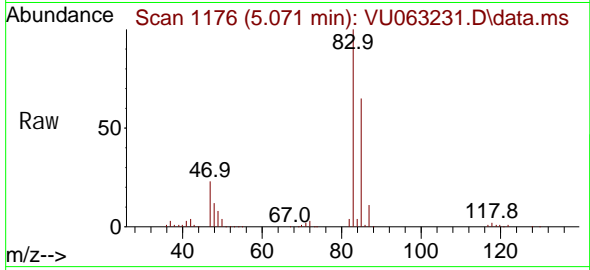
Tgt Ion: 128 Resp: 79830
 Ion Ratio Lower Upper
 128 100
 49 167.8 0.0 343.4
 130 128.9 102.9 154.3



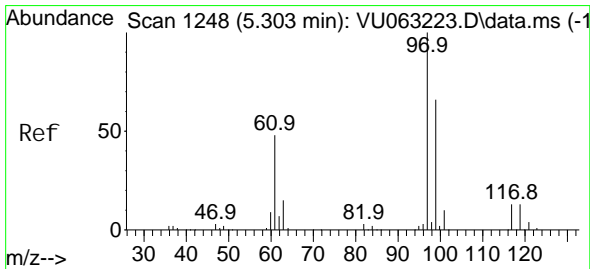
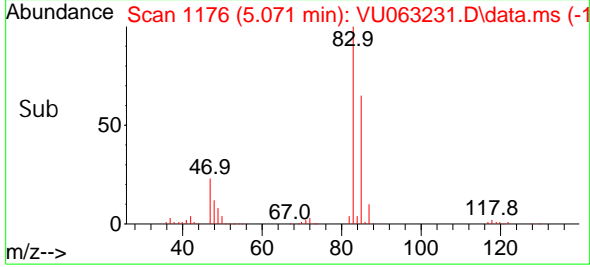
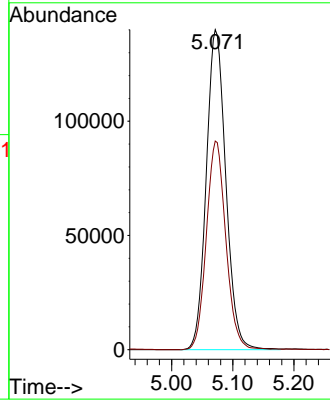


#27
 Chloroform
 Concen: 9.736 ug/l
 RT: 5.071 min Scan# 1176
 Delta R.T. 0.000 min
 Lab File: VU063231.D
 Acq: 10 Feb 2025 20:54

Instrument : MSVOA_U
 ClientSampleId :

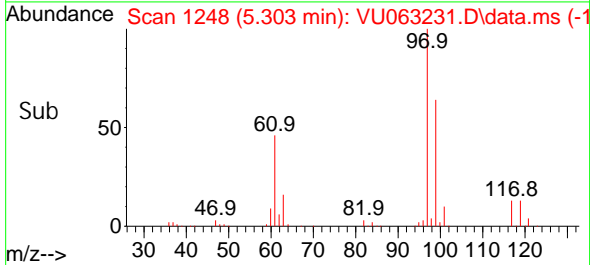
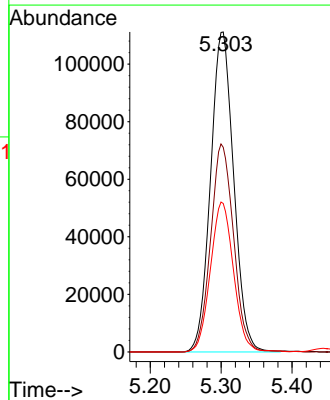
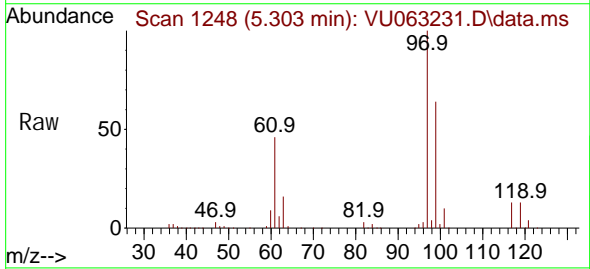


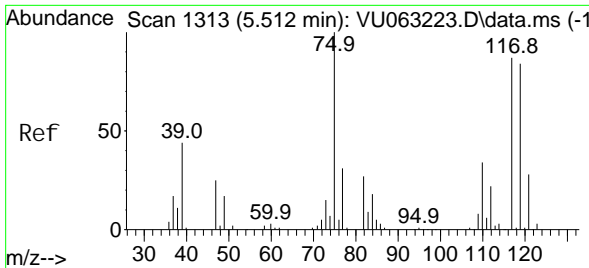
Tgt Ion: 83 Resp: 311275
 Ion Ratio Lower Upper
 83 100
 85 65.2 0.0 129.8



#28
 1,1,1-Tri chloroethane
 Concen: 9.747 ug/l
 RT: 5.303 min Scan# 1248
 Delta R.T. 0.000 min
 Lab File: VU063231.D
 Acq: 10 Feb 2025 20:54

Tgt Ion: 97 Resp: 252423
 Ion Ratio Lower Upper
 97 100
 99 64.6 32.4 97.0
 61 46.6 23.8 71.2



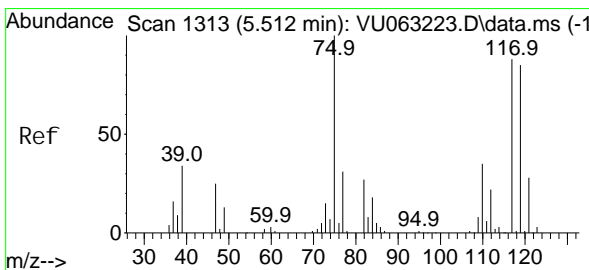
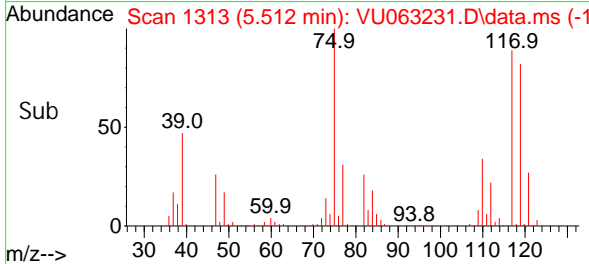
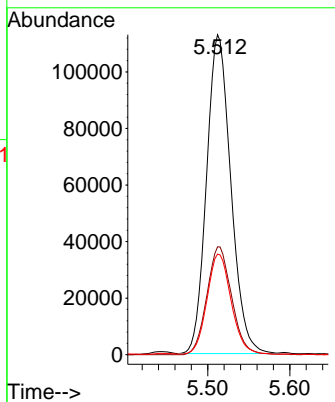
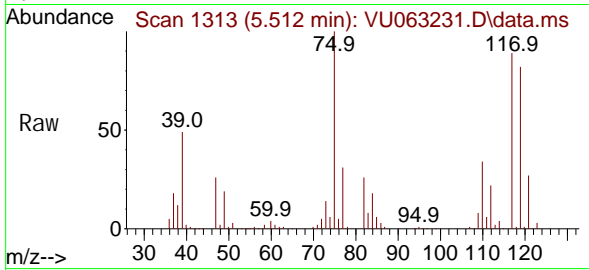


#29
 1, 1-Di chl oropropene
 Concen: 10.023 ug/l
 RT: 5.512 min Scan# 1313
 Delta R.T. 0.000 min
 Lab File: VU063231.D
 Acq: 10 Feb 2025 20:54

Instrument : MSVOA_U
 ClientSampleId :

Tgt Ion: 75 Resp: 232502

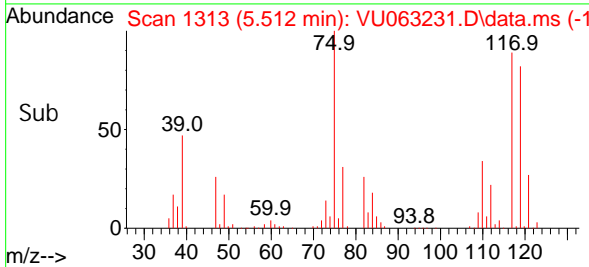
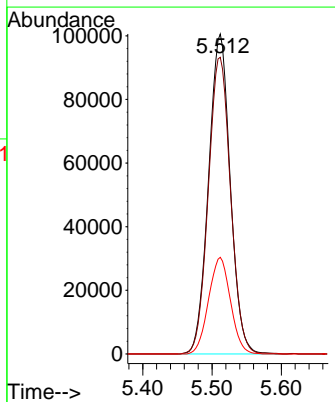
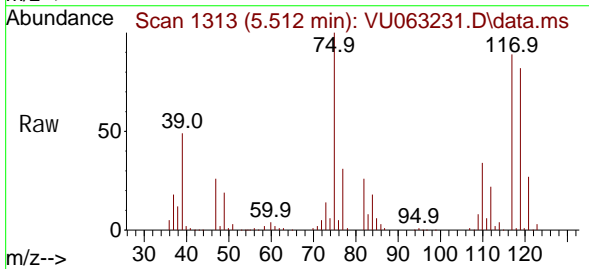
Ion	Ratio	Lower	Upper
75	100		
110	34.5	17.2	51.5
77	31.1	24.6	37.0

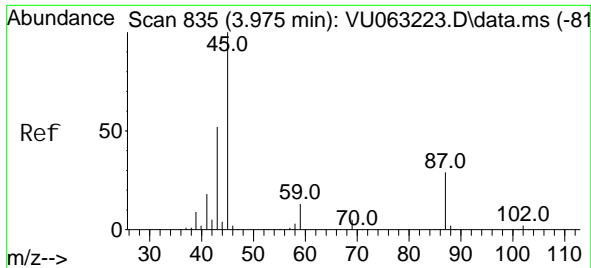


#30
 Carbon Tetrachloride
 Concen: 9.836 ug/l
 RT: 5.512 min Scan# 1313
 Delta R.T. 0.000 min
 Lab File: VU063231.D
 Acq: 10 Feb 2025 20:54

Tgt Ion: 117 Resp: 218463

Ion	Ratio	Lower	Upper
117	100		
119	92.7	76.7	115.1
121	30.2	25.5	38.3

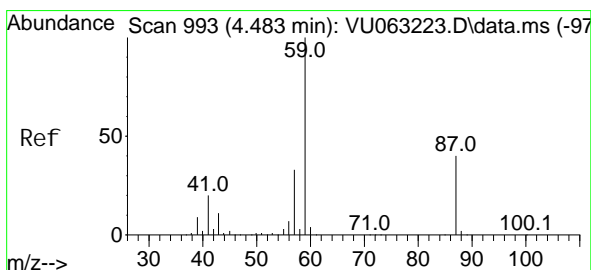
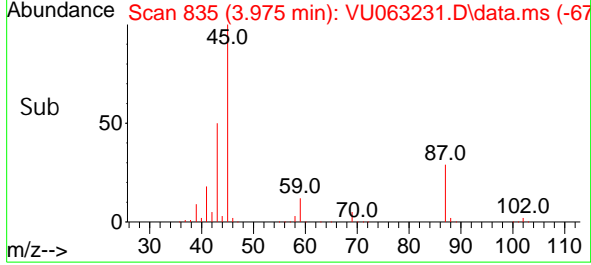
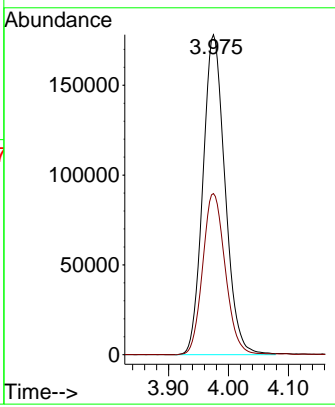
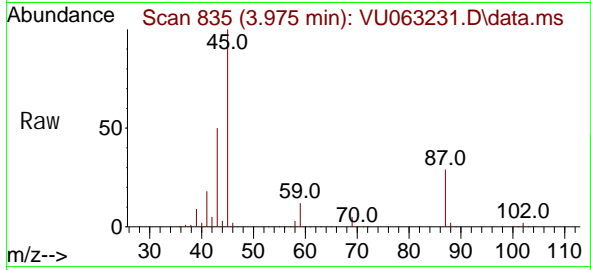




#31
 Isopropyl Ether
 Concen: 10.109 ug/l
 RT: 3.975 min Scan# 835
 Delta R.T. 0.000 min
 Lab File: VU063231.D
 Acq: 10 Feb 2025 20:54

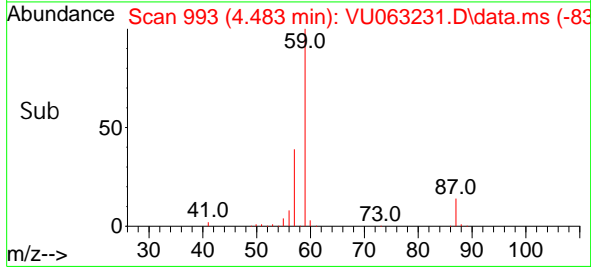
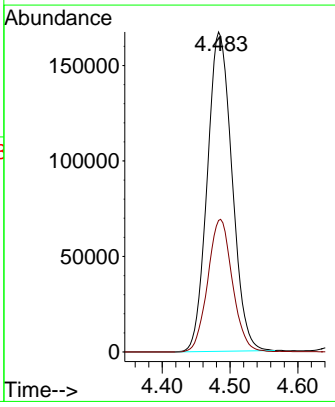
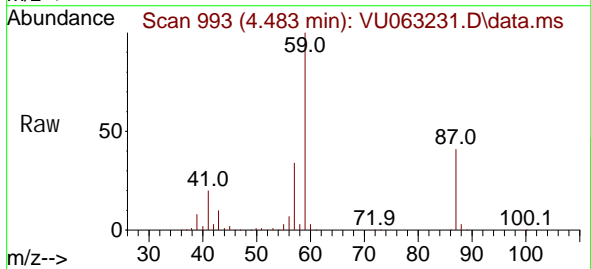
Instrument :
 MSVOA_U
 ClientSampleId :

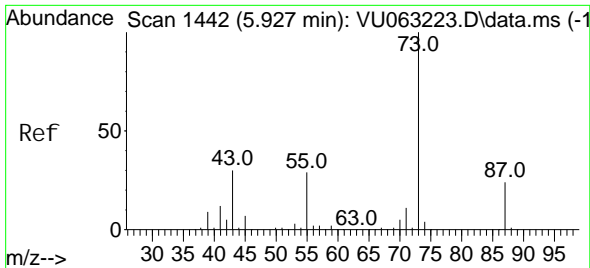
Tgt Ion: 45 Resp: 457226
 Ion Ratio Lower Upper
 45 100
 43 51.4 25.7 77.1



#32
 Ethyl-t-butyl ether
 Concen: 10.297 ug/l
 RT: 4.483 min Scan# 993
 Delta R.T. 0.000 min
 Lab File: VU063231.D
 Acq: 10 Feb 2025 20:54

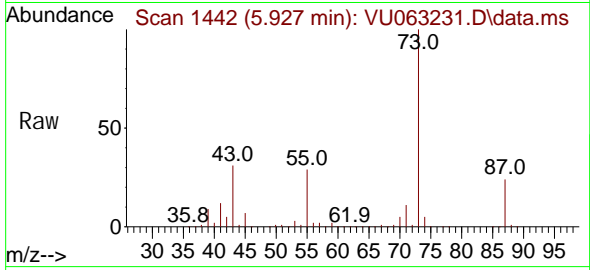
Tgt Ion: 59 Resp: 423524
 Ion Ratio Lower Upper
 59 100
 87 41.2 32.6 49.0



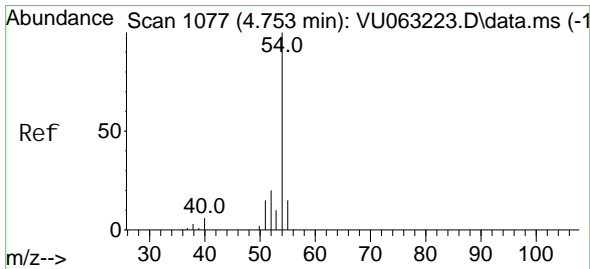
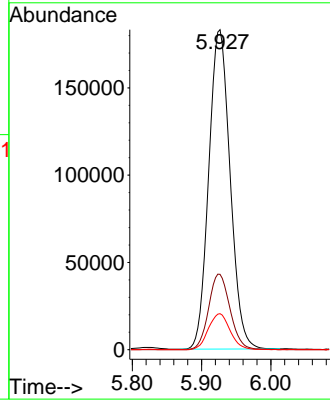
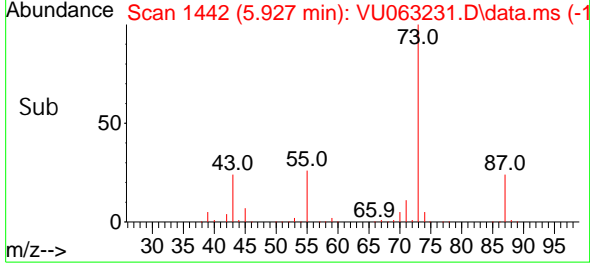


#33
 Tert-Amyl methyl ether
 Concen: 10.889 ug/l
 RT: 5.927 min Scan# 1442
 Delta R.T. 0.000 min
 Lab File: VU063231.D
 Acq: 10 Feb 2025 20:54

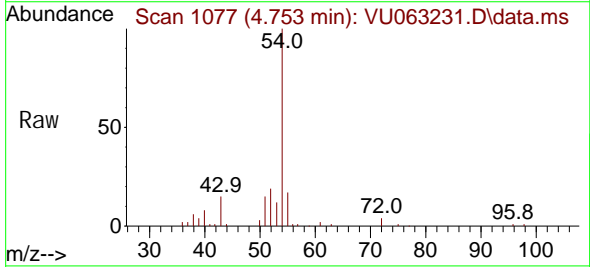
Instrument : MSVOA_U
 ClientSampleId :



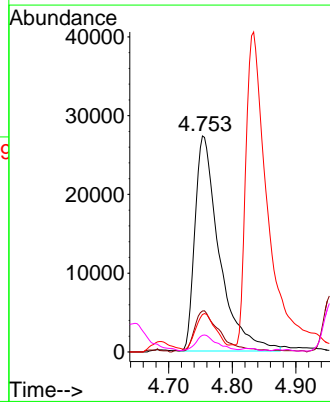
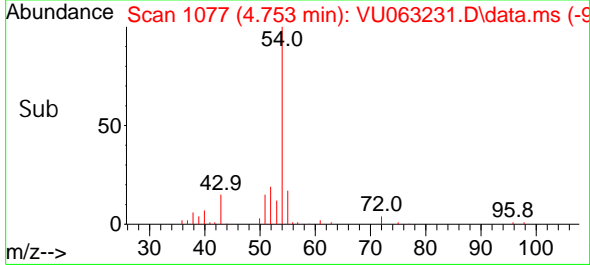
Tgt Ion: 73 Resp: 391316
 Ion Ratio Lower Upper
 73 100
 87 23.8 18.9 28.3
 71 11.5 9.0 13.4

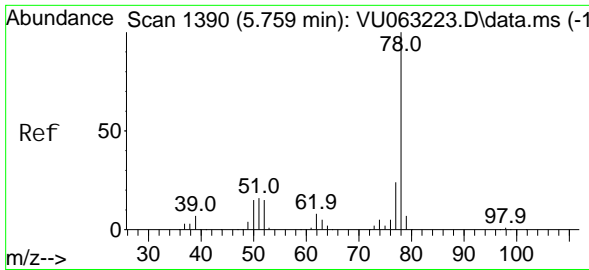


#34
 Propioni trile
 Concen: 57.921 ug/l
 RT: 4.753 min Scan# 1077
 Delta R.T. 0.000 min
 Lab File: VU063231.D
 Acq: 10 Feb 2025 20:54



Tgt Ion: 54 Resp: 72617
 Ion Ratio Lower Upper
 54 100
 52 18.2 16.3 24.5
 55 14.7 11.8 17.6
 40 6.2 4.3 6.5

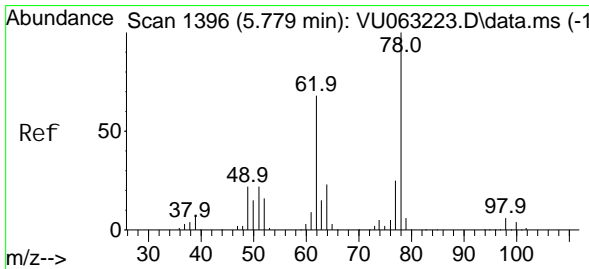
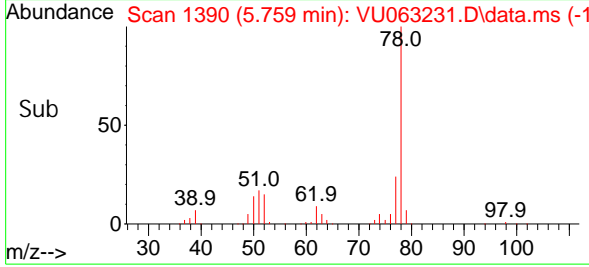
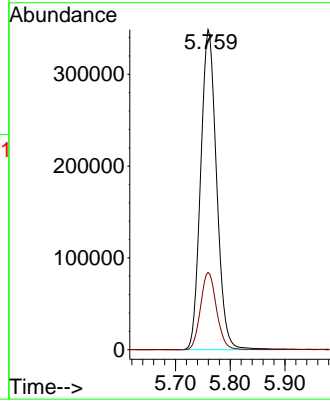
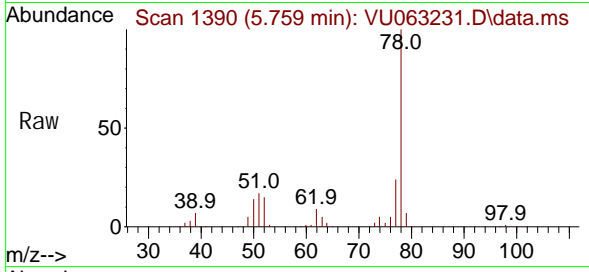




#35
Benzene
Concen: 9.873 ug/l
RT: 5.759 min Scan# 1390
Delta R.T. 0.000 min
Lab File: VU063231.D
Acq: 10 Feb 2025 20:54

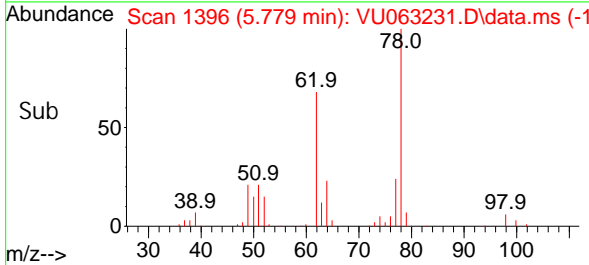
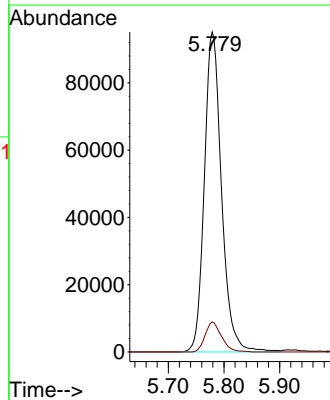
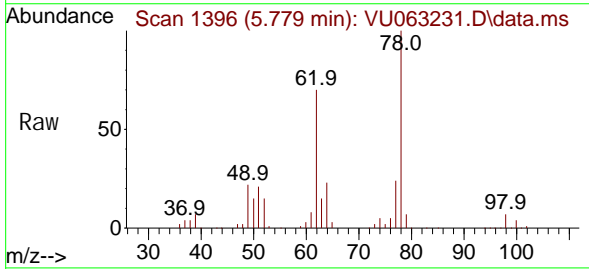
Instrument :
MSVOA_U
ClientSampleId :

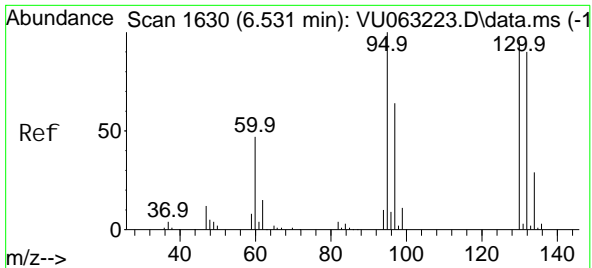
Tgt Ion: 78 Resp: 704143
Ion Ratio Lower Upper
78 100
77 24.2 19.0 28.4



#36
1,2-Di chloroethane
Concen: 9.915 ug/l
RT: 5.779 min Scan# 1396
Delta R.T. 0.000 min
Lab File: VU063231.D
Acq: 10 Feb 2025 20:54

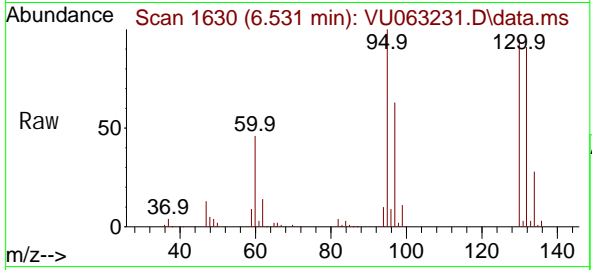
Tgt Ion: 62 Resp: 204095
Ion Ratio Lower Upper
62 100
98 8.9 6.9 10.3



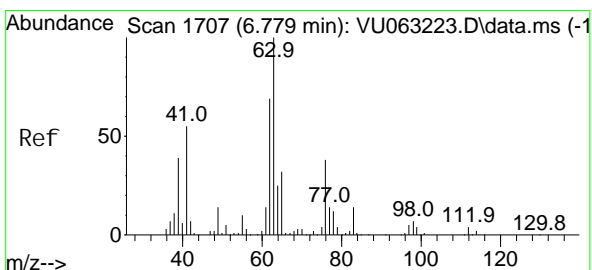
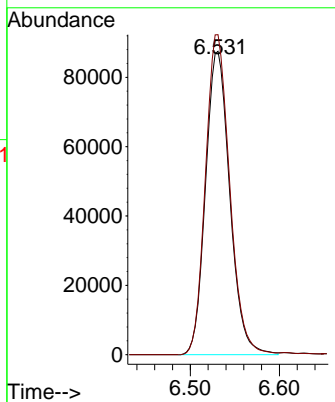
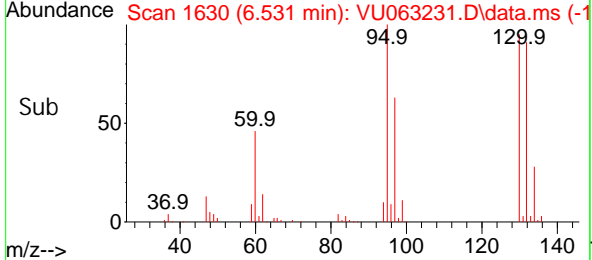


#37
 Tri chloroethene
 Concen: 9.738 ug/l
 RT: 6.531 min Scan# 10
 Delta R.T. 0.000 min
 Lab File: VU063231.D
 Acq: 10 Feb 2025 20:54

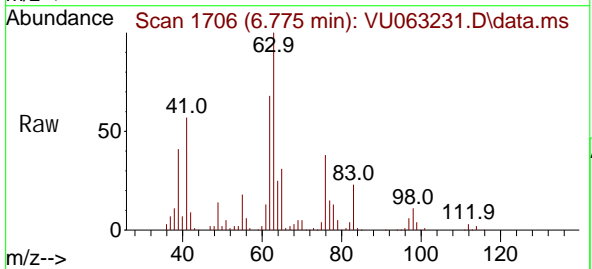
Instrument :
 MSVOA_U
 ClientSampleId :



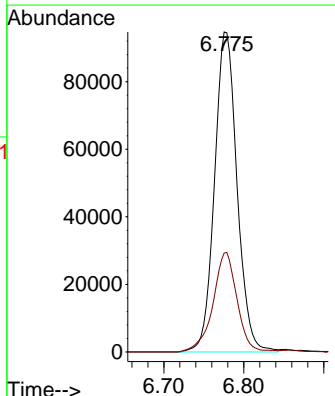
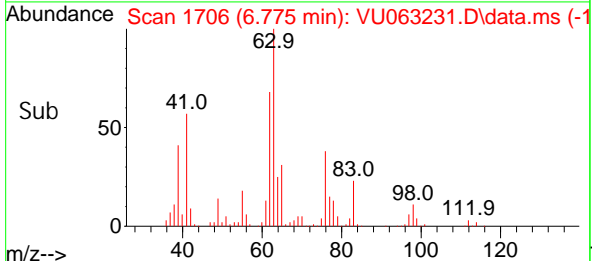
Tgt Ion: 130 Resp: 165166
 Ion Ratio Lower Upper
 130 100
 95 105.5 83.2 124.8

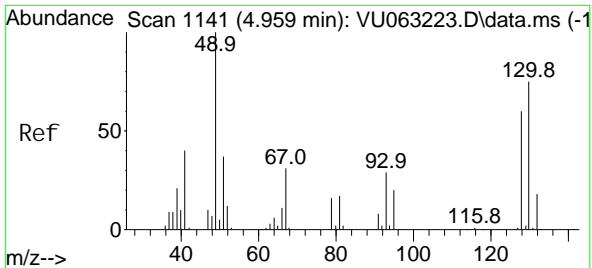


#38
 1,2-Di chloropropane
 Concen: 9.907 ug/l
 RT: 6.775 min Scan# 1706
 Delta R.T. -0.003 min
 Lab File: VU063231.D
 Acq: 10 Feb 2025 20:54



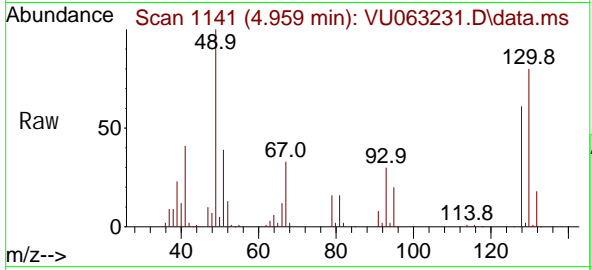
Tgt Ion: 63 Resp: 184933
 Ion Ratio Lower Upper
 63 100
 65 30.9 25.3 37.9





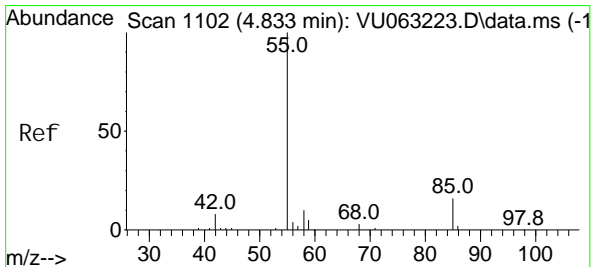
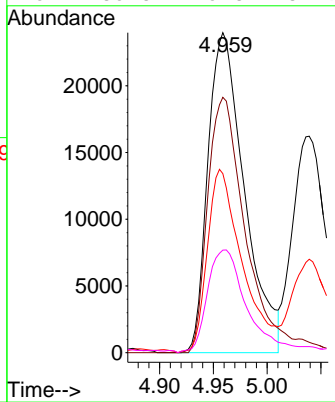
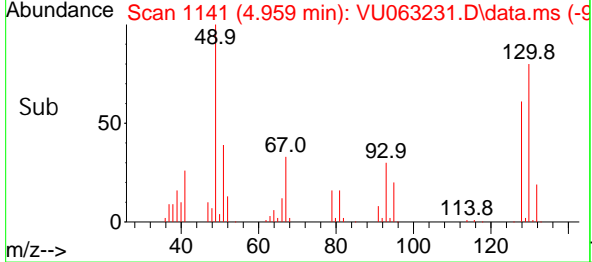
#39
 Methacrylonitrile
 Concen: 12.093 ug/l
 RT: 4.959 min Scan# 1141
 Delta R.T. 0.000 min
 Lab File: VU063231.D
 Acq: 10 Feb 2025 20:54

Instrument :
 MSVOA_U
 ClientSampleId :

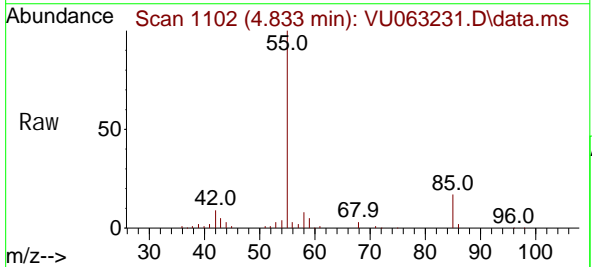


Tgt Ion: 41 Resp: 56502

Ion	Ratio	Lower	Upper
41	100		
67	84.5	64.5	96.7
39	55.0	43.0	64.6
52	35.3	25.3	37.9

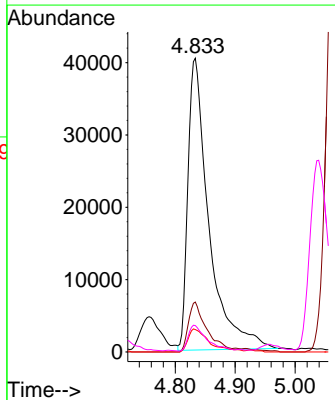
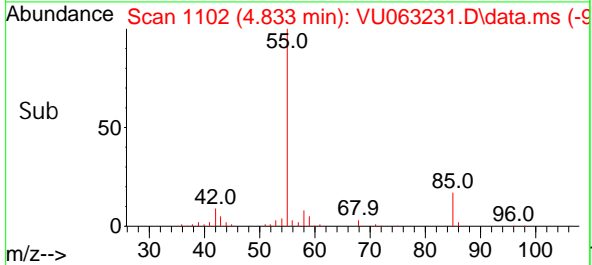


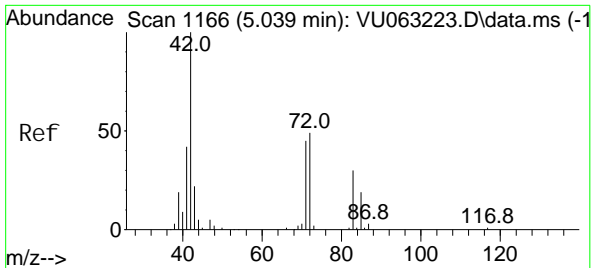
#40
 Methyl acrylate
 Concen: 11.372 ug/l
 RT: 4.833 min Scan# 1102
 Delta R.T. 0.000 min
 Lab File: VU063231.D
 Acq: 10 Feb 2025 20:54



Tgt Ion: 55 Resp: 97926

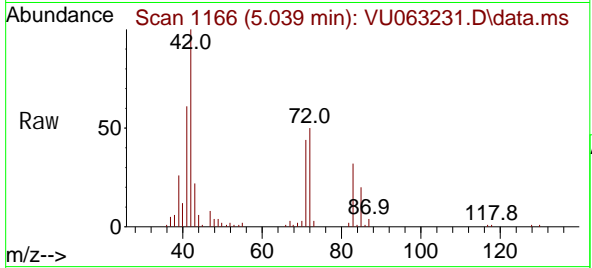
Ion	Ratio	Lower	Upper
55	100		
85	14.9	13.3	19.9
58	7.9	7.3	10.9
42	7.9	6.9	10.3



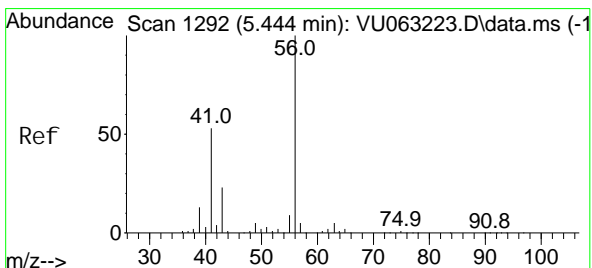
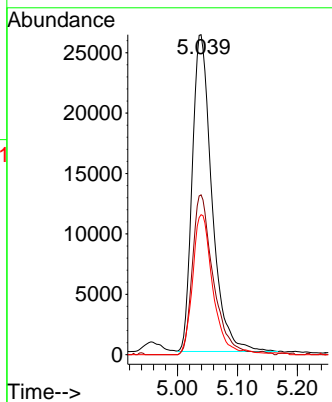
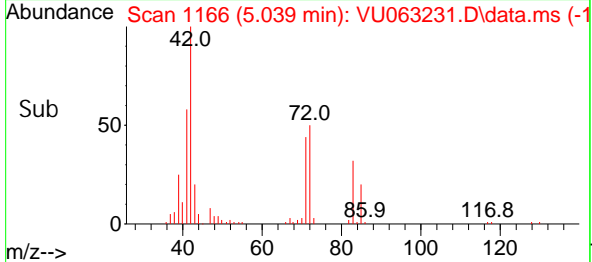


#41
 Tetrahydrofuran
 Concen: 22.028 ug/l
 RT: 5.039 min Scan# 1166
 Delta R.T. 0.000 min
 Lab File: VU063231.D
 Acq: 10 Feb 2025 20:54

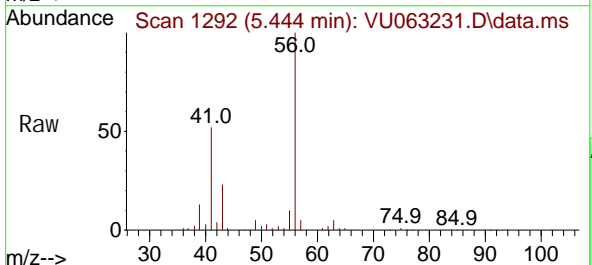
Instrument :
 MSVOA_U
 ClientSampleId :



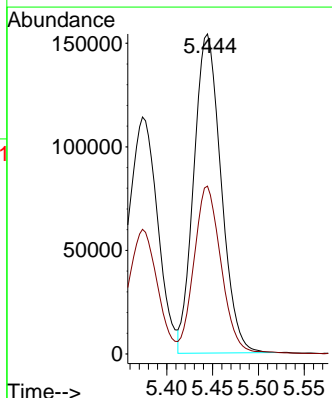
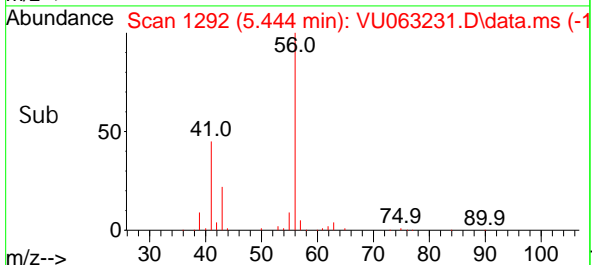
Tgt Ion: 42 Resp: 59857
 Ion Ratio Lower Upper
 42 100
 72 53.5 41.5 62.3
 71 44.7 37.2 55.8

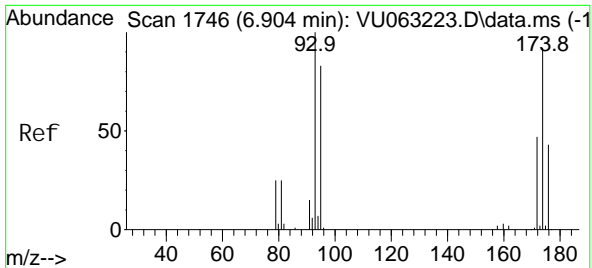


#42
 1-Chlorobutane
 Concen: 10.043 ug/l
 RT: 5.444 min Scan# 1292
 Delta R.T. 0.000 min
 Lab File: VU063231.D
 Acq: 10 Feb 2025 20:54



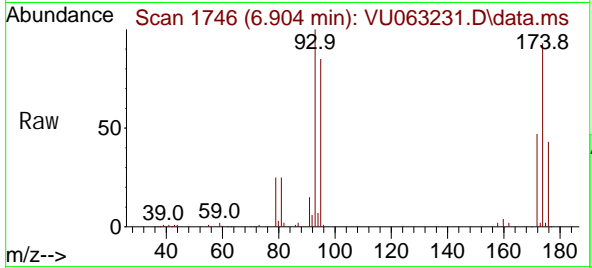
Tgt Ion: 56 Resp: 318733
 Ion Ratio Lower Upper
 56 100
 41 52.4 26.3 78.8



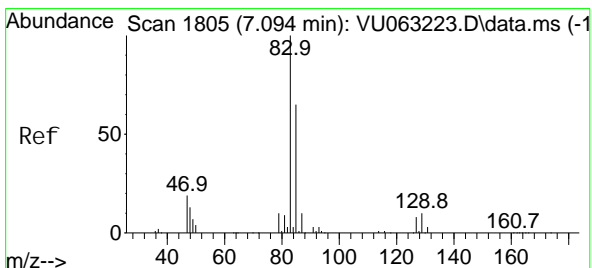
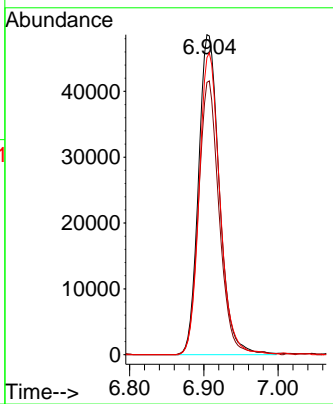
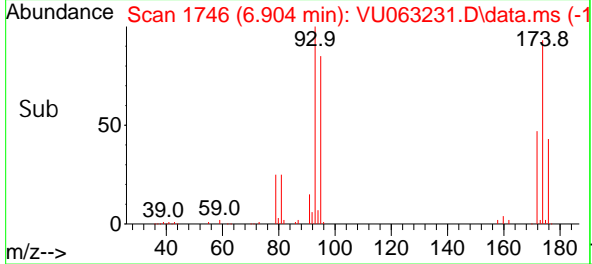


#43
 Di bromomethane
 Concen: 10.064 ug/l
 RT: 6.904 min Scan# 1746
 Delta R.T. 0.000 min
 Lab File: VU063231.D
 Acq: 10 Feb 2025 20:54

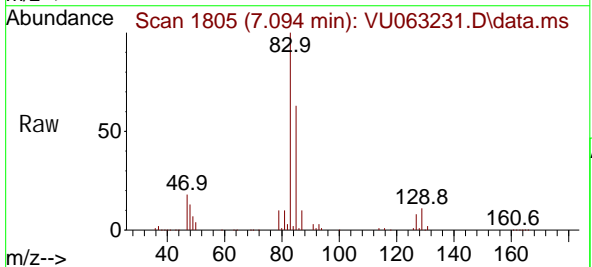
Instrument :
 MSVOA_U
 ClientSampleId :



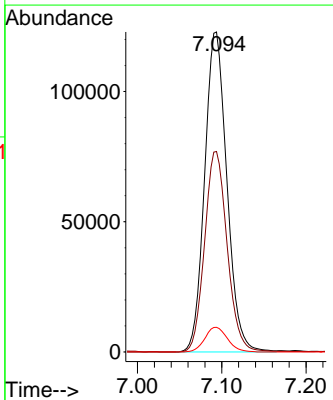
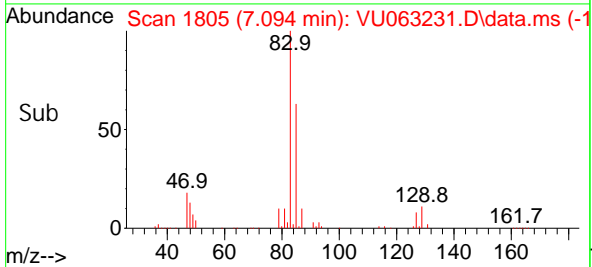
Tgt Ion: 93 Resp: 95134
 Ion Ratio Lower Upper
 93 100
 95 84.2 67.2 100.8
 174 93.3 75.7 113.5

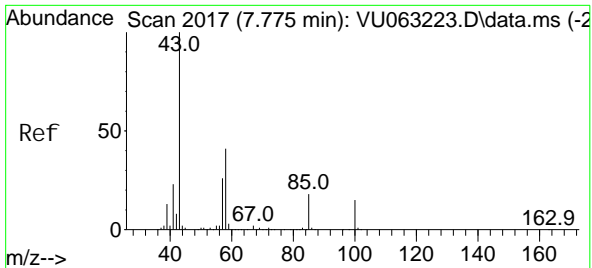


#44
 Bromodi chloromethane
 Concen: 10.259 ug/l
 RT: 7.094 min Scan# 1805
 Delta R.T. 0.000 min
 Lab File: VU063231.D
 Acq: 10 Feb 2025 20:54



Tgt Ion: 83 Resp: 225708
 Ion Ratio Lower Upper
 83 100
 85 62.6 51.7 77.5
 127 7.7 6.7 10.1

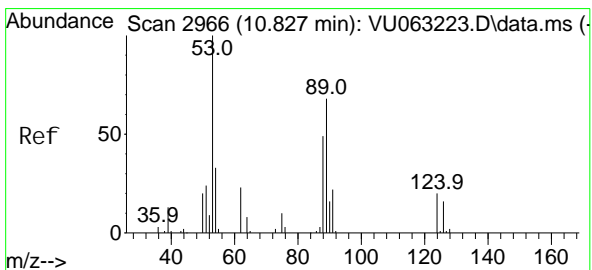
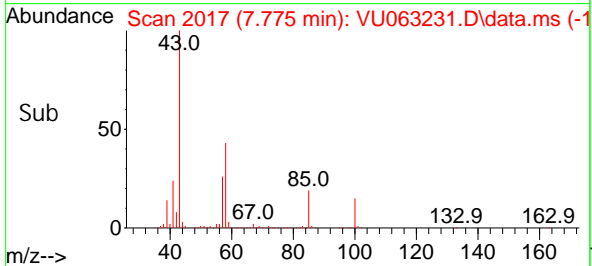
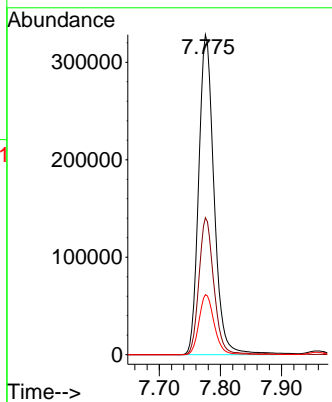
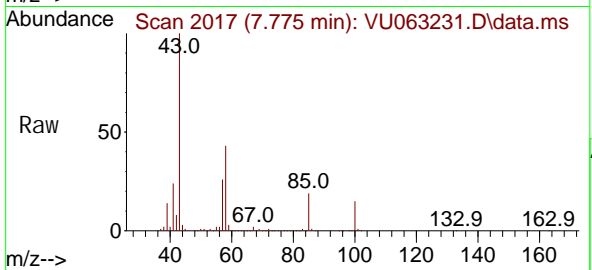




#45
 4-Methyl -2-Pentanone
 Concen: 57.782 ug/l
 RT: 7.775 min Scan# 2017
 Delta R.T. 0.000 min
 Lab File: VU063231.D
 Acq: 10 Feb 2025 20:54

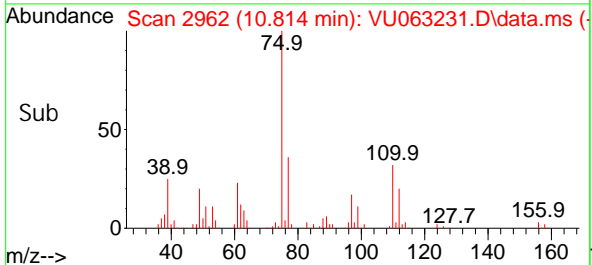
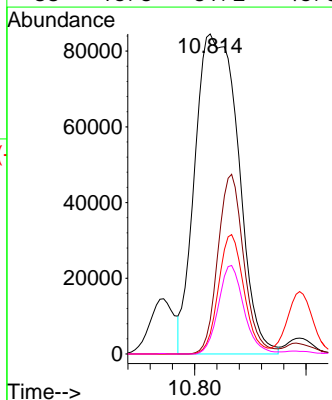
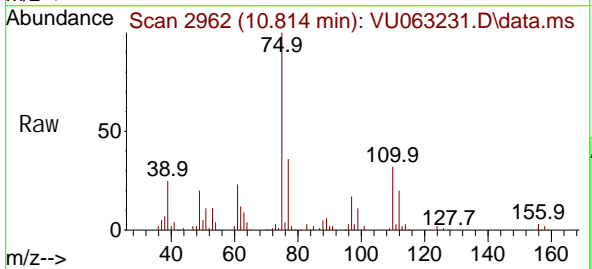
Instrument : MSVOA_U
 ClientSampleId :

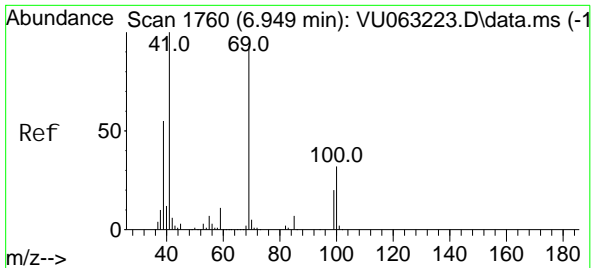
Tgt Ion	Resp	Lower	Upper
43	572626		
58	41.6	20.8	62.5
85	18.7	14.8	22.2



#46
 t-1,4-Di chloro-2-butene
 Concen: 48.886 ug/l
 RT: 10.814 min Scan# 2962
 Delta R.T. -0.013 min
 Lab File: VU063231.D
 Acq: 10 Feb 2025 20:54

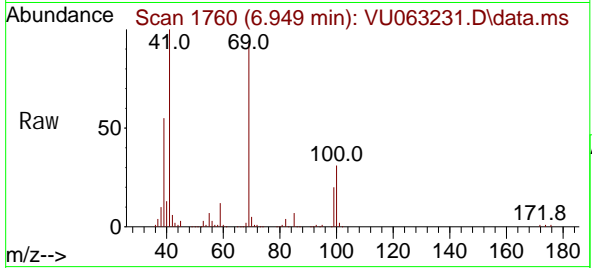
Tgt Ion	Resp	Lower	Upper
75	227746		
53	33.8	64.5	96.7#
89	22.1	43.4	65.2#
88	16.3	31.2	46.8#





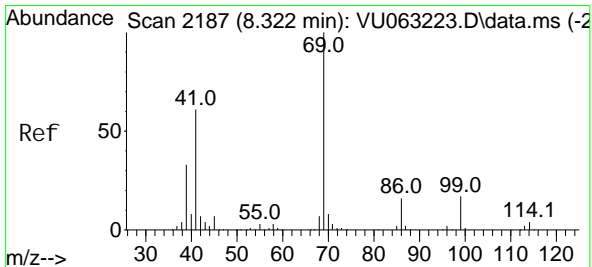
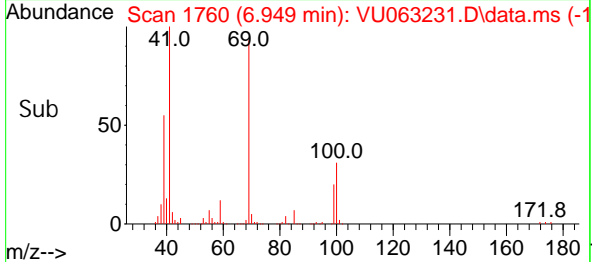
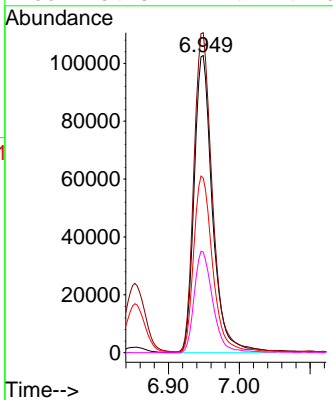
#47
 Methyl methacrylate
 Concen: 23.158 ug/l
 RT: 6.949 min Scan# 1760
 Delta R.T. 0.000 min
 Lab File: VU063231.D
 Acq: 10 Feb 2025 20:54

Instrument : MSVOA_U
 ClientSampleId :



Tgt Ion: 69 Resp: 184386

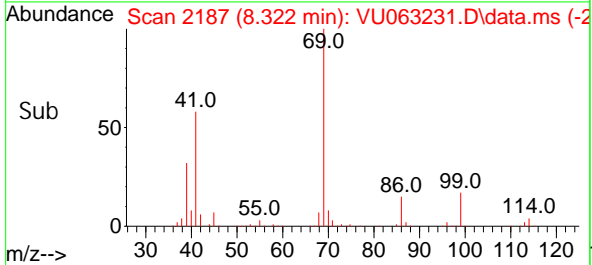
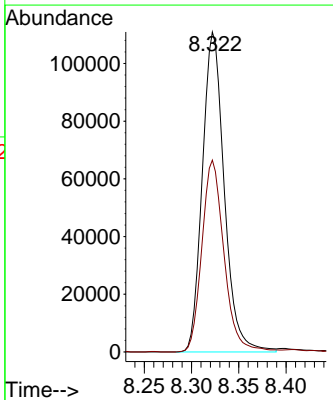
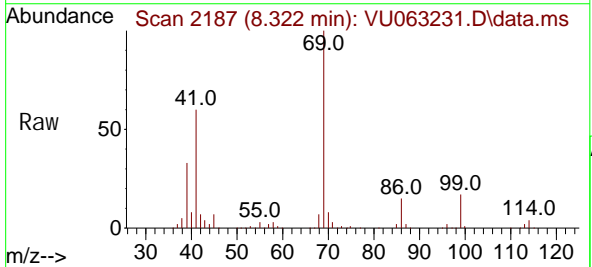
Ion	Ratio	Lower	Upper
69	100		
41	108.4	0.0	217.0
39	60.8	47.7	71.5
100	34.8	27.4	41.0

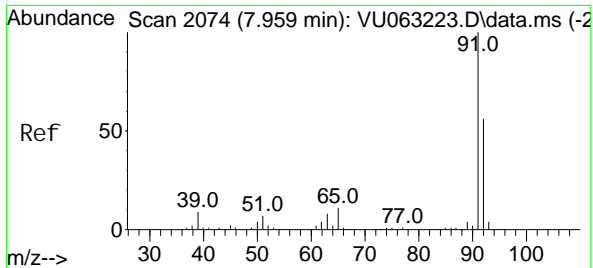


#48
 Ethyl methacrylate
 Concen: 11.967 ug/l
 RT: 8.322 min Scan# 2187
 Delta R.T. 0.000 min
 Lab File: VU063231.D
 Acq: 10 Feb 2025 20:54

Tgt Ion: 69 Resp: 178914

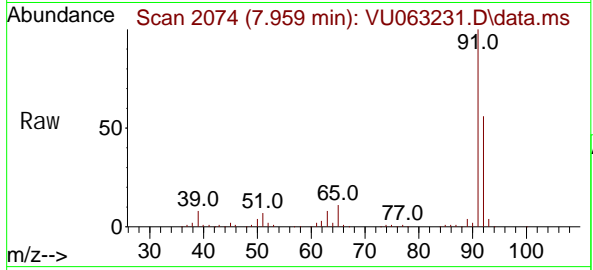
Ion	Ratio	Lower	Upper
69	100		
41	60.6	30.6	92.0



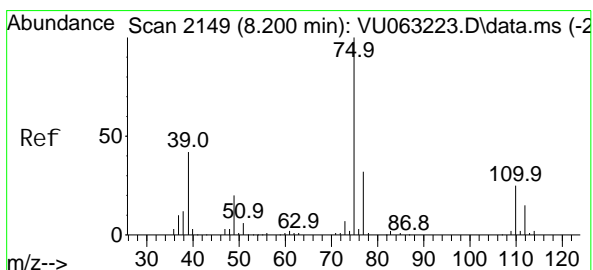
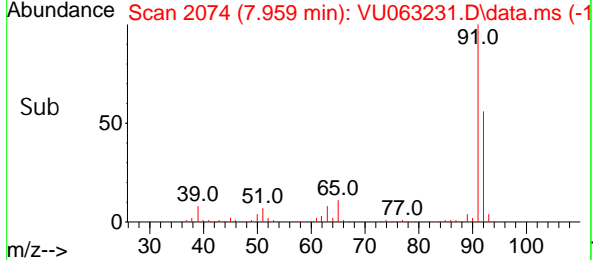
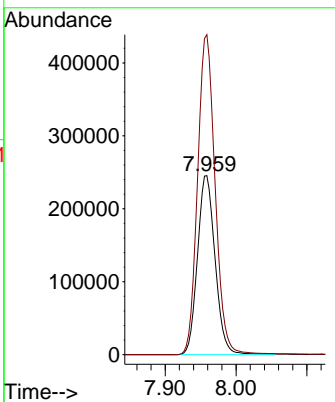


#49
 Tol uene
 Concen: 10.346 ug/l
 RT: 7.959 min Scan# 2074
 Delta R.T. 0.000 min
 Lab File: VU063231.D
 Acq: 10 Feb 2025 20:54

Instrument : MSVOA_U
 ClientSampleId :

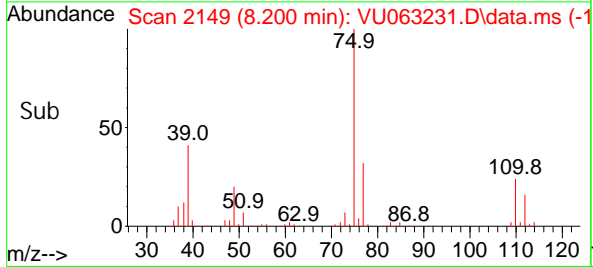
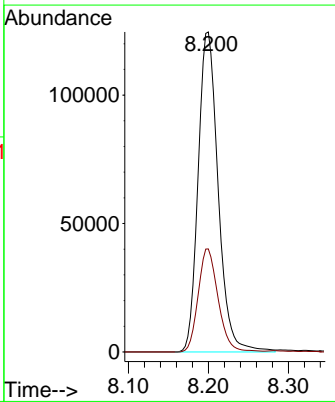
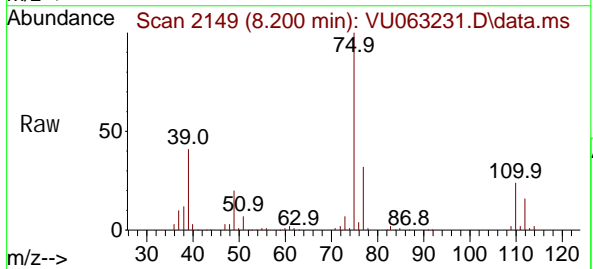


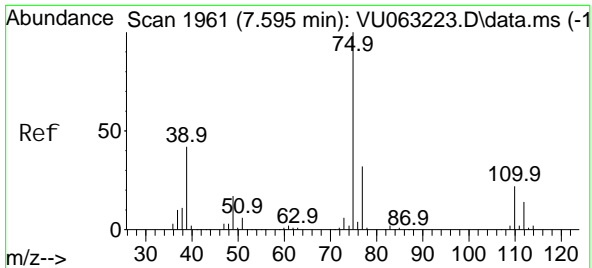
Tgt Ion: 92 Resp: 424364
 Ion Ratio Lower Upper
 92 100
 91 178.0 141.8 212.6



#50
 t-1,3-Di chl oropropene
 Concen: 10.790 ug/l
 RT: 8.200 min Scan# 2149
 Delta R.T. 0.000 min
 Lab File: VU063231.D
 Acq: 10 Feb 2025 20:54

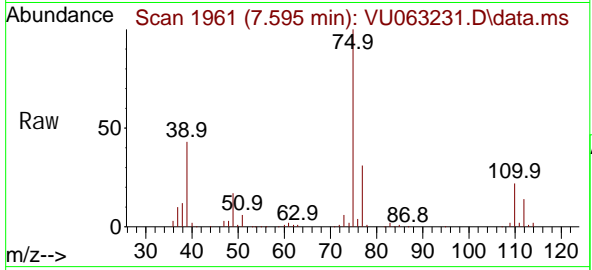
Tgt Ion: 75 Resp: 217346
 Ion Ratio Lower Upper
 75 100
 77 32.2 25.9 38.9





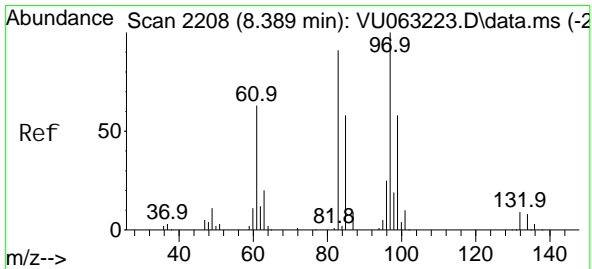
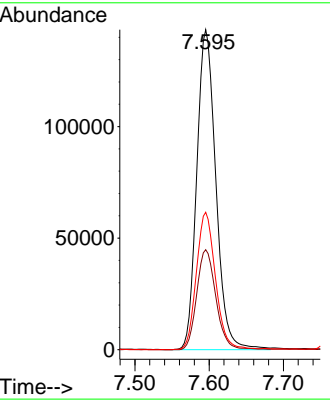
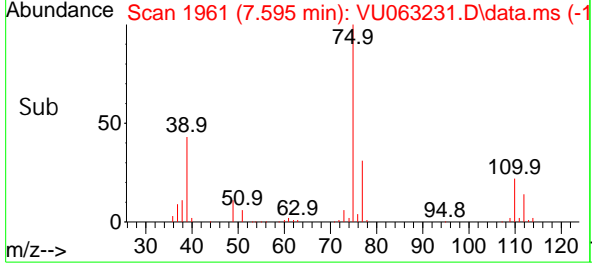
#51
 cis-1,3-Dichloropropene
 Concen: 10.276 ug/l
 RT: 7.595 min Scan# 1961
 Delta R.T. 0.000 min
 Lab File: VU063231.D
 Acq: 10 Feb 2025 20:54

Instrument : MSVOA_U
 ClientSampleId :

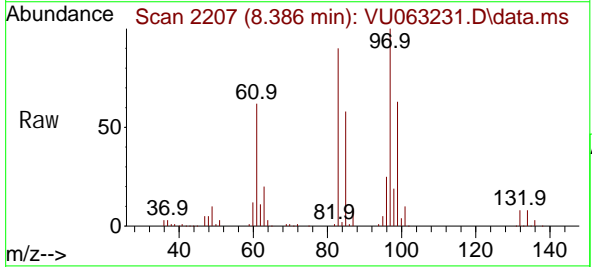


Tgt Ion: 75 Resp: 255685

Ion	Ratio	Lower	Upper
75	100		
77	31.3	25.3	37.9
39	43.0	33.5	50.3

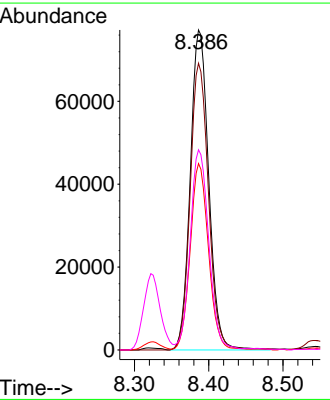
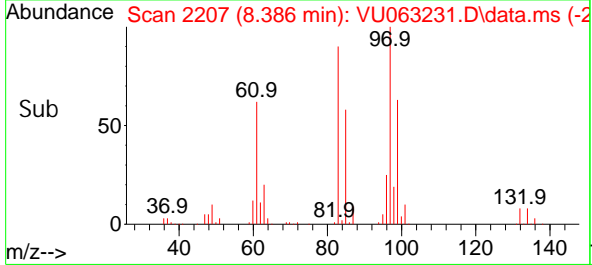


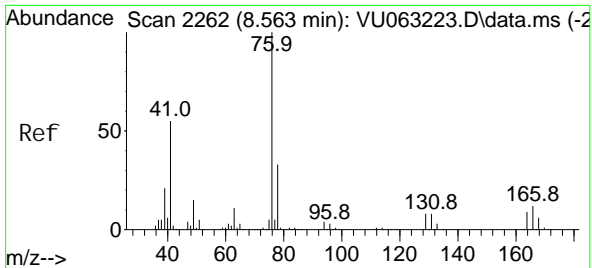
#52
 1,1,2-Trichloroethane
 Concen: 10.479 ug/l
 RT: 8.386 min Scan# 2207
 Delta R.T. -0.003 min
 Lab File: VU063231.D
 Acq: 10 Feb 2025 20:54



Tgt Ion: 97 Resp: 133552

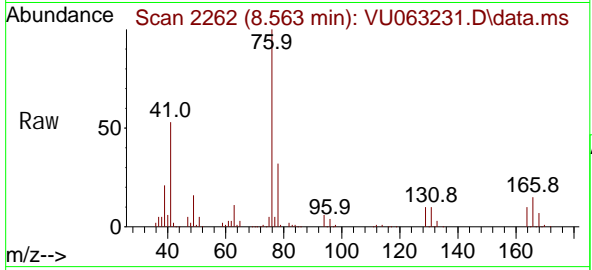
Ion	Ratio	Lower	Upper
97	100		
83	89.6	73.0	109.4
85	58.1	46.3	69.5
99	62.3	48.5	72.7



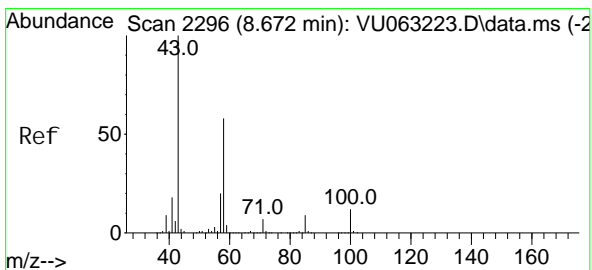
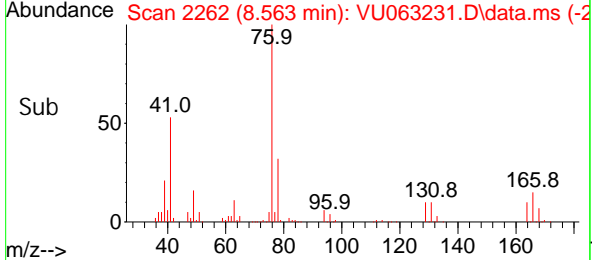
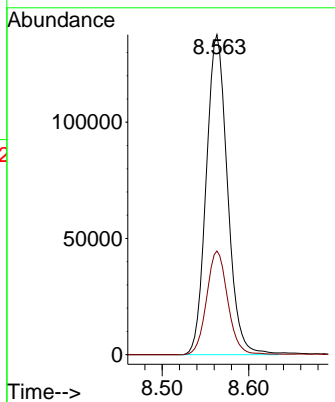


#53
 1, 3-Di chl oropropane
 Concen: 10.363 ug/l
 RT: 8.563 min Scan# 2262
 Delta R.T. 0.000 min
 Lab File: VU063231.D
 Acq: 10 Feb 2025 20: 54

Instrument :
 MSVOA_U
 ClientSampleId :

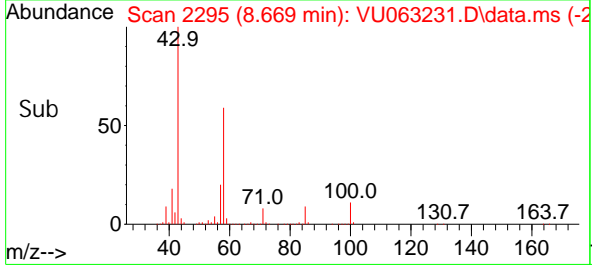
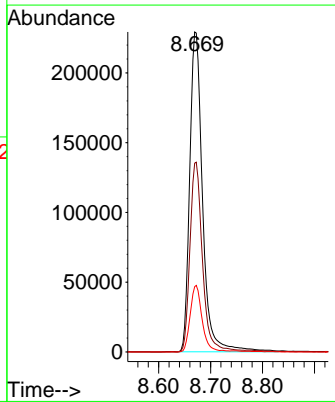
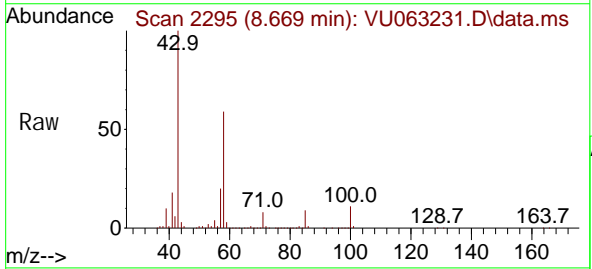


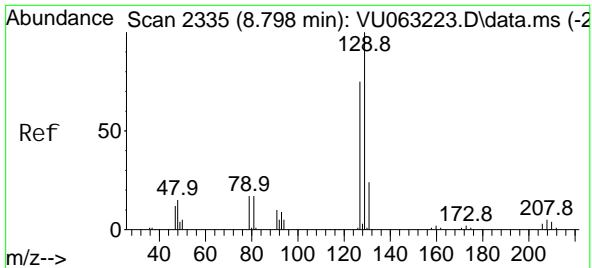
Tgt Ion: 76 Resp: 234480
 Ion Ratio Lower Upper
 76 100
 78 32.3 26.3 39.5



#54
 2-Hexanone
 Concen: 58.350 ug/l
 RT: 8.669 min Scan# 2295
 Delta R.T. -0.003 min
 Lab File: VU063231.D
 Acq: 10 Feb 2025 20: 54

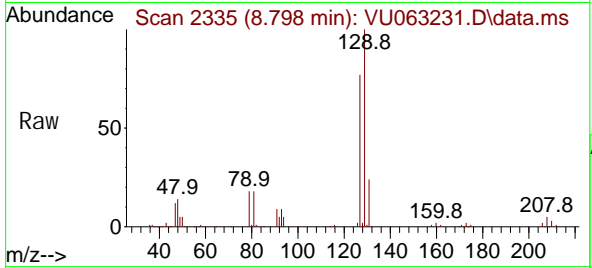
Tgt Ion: 43 Resp: 394615
 Ion Ratio Lower Upper
 43 100
 58 57.6 38.0 78.0
 57 19.4 0.0 39.1



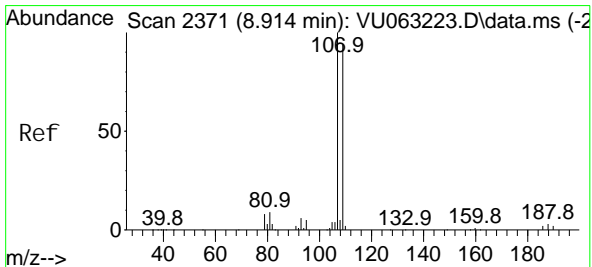
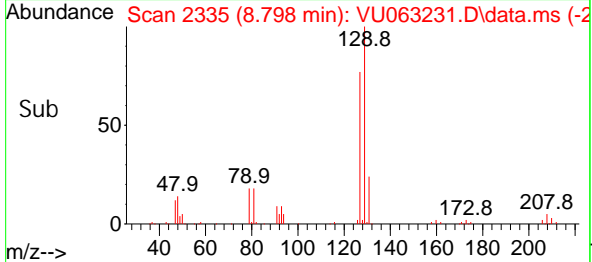
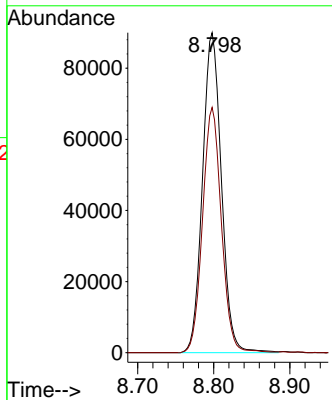


#55
 Di bromochloromethane
 Concen: 10.594 ug/l
 RT: 8.798 min Scan# 2335
 Delta R.T. 0.000 min
 Lab File: VU063231.D
 Acq: 10 Feb 2025 20:54

Instrument : MSVOA_U
 ClientSampleId :

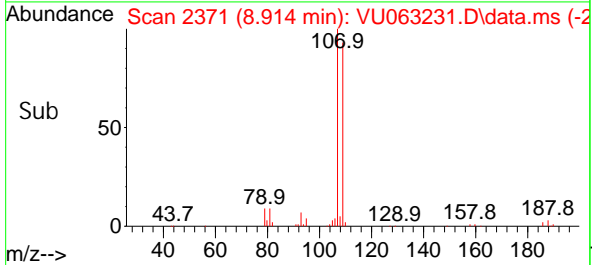
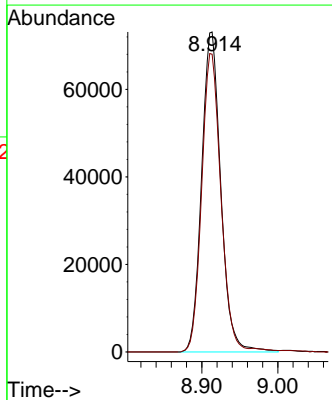
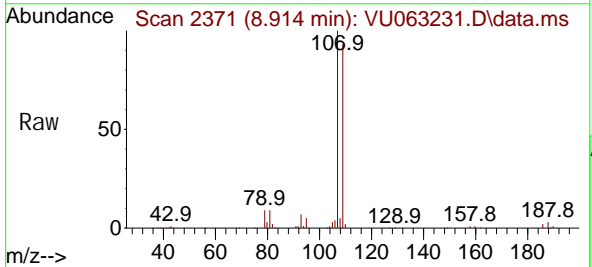


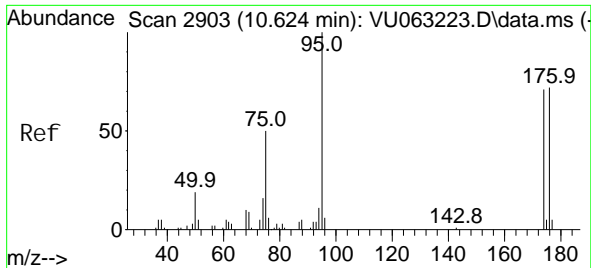
Tgt Ion: 129 Resp: 155344
 Ion Ratio Lower Upper
 129 100
 127 76.4 60.4 90.6



#56
 1,2-Di bromoethane
 Concen: 10.710 ug/l
 RT: 8.914 min Scan# 2371
 Delta R.T. 0.000 min
 Lab File: VU063231.D
 Acq: 10 Feb 2025 20:54

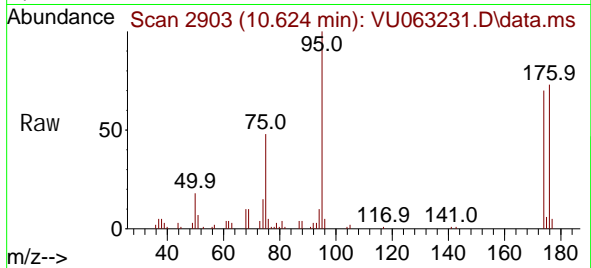
Tgt Ion: 107 Resp: 128027
 Ion Ratio Lower Upper
 107 100
 109 93.1 0.0 187.8



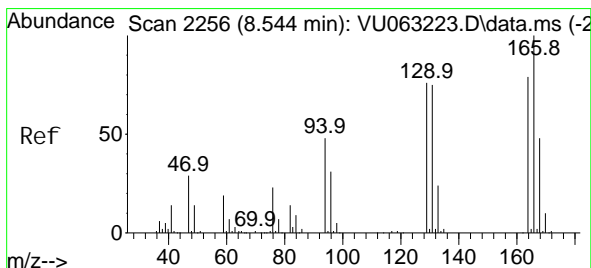
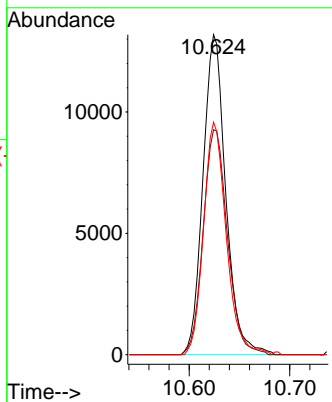
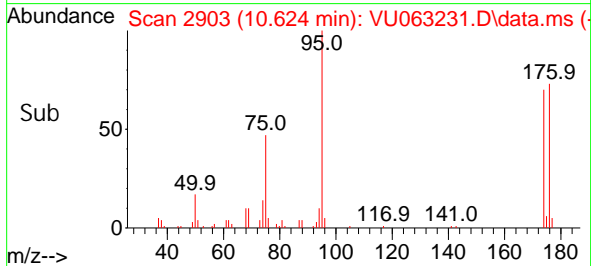


#57
 4-Bromofluorobenzene
 Concen: 1.085 ug/l
 RT: 10.624 min Scan# 2903
 Delta R.T. 0.000 min
 Lab File: VU063231.D
 Acq: 10 Feb 2025 20:54

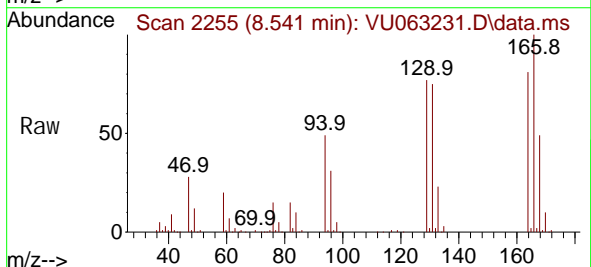
Instrument : MSVOA_U
 ClientSampleId :



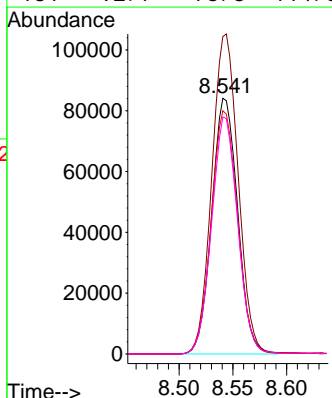
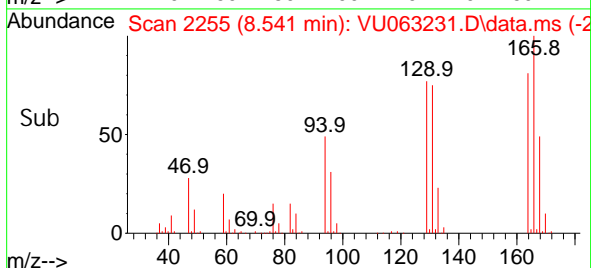
Tgt Ion: 95 Resp: 20765
 Ion Ratio Lower Upper
 95 100
 174 74.8 58.6 88.0
 176 72.2 58.2 87.4

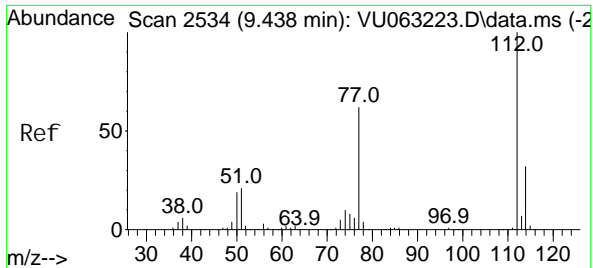


#58
 Tetrachloroethene
 Concen: 10.074 ug/l
 RT: 8.541 min Scan# 2255
 Delta R.T. -0.003 min
 Lab File: VU063231.D
 Acq: 10 Feb 2025 20:54



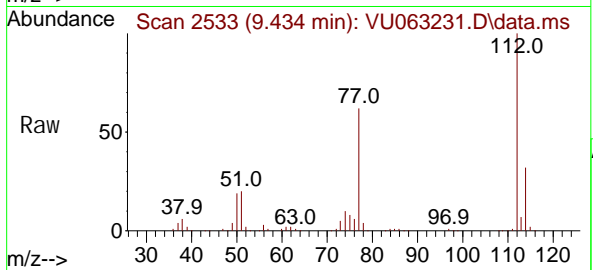
Tgt Ion: 164 Resp: 140811
 Ion Ratio Lower Upper
 164 100
 166 124.2 101.4 152.0
 129 95.1 77.0 115.4
 131 92.7 76.3 114.5



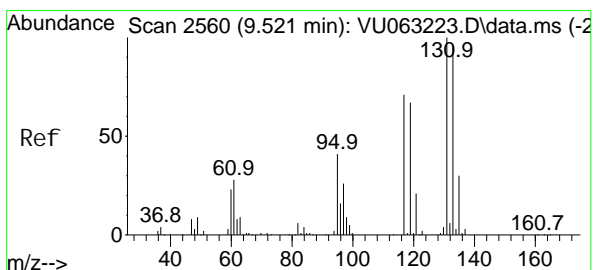
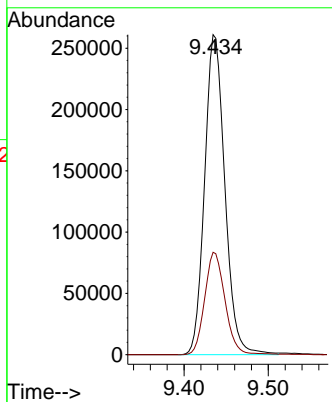
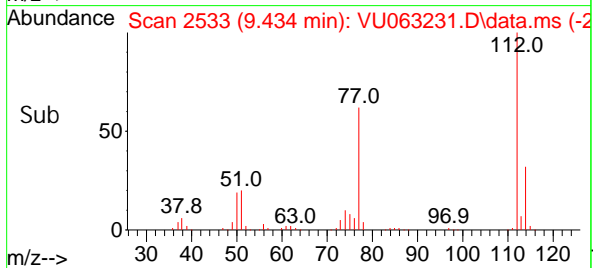


#59
 Chlorobenzene
 Concen: 10.099 ug/l
 RT: 9.434 min Scan# 2534
 Delta R.T. -0.003 min
 Lab File: VU063231.D
 Acq: 10 Feb 2025 20:54

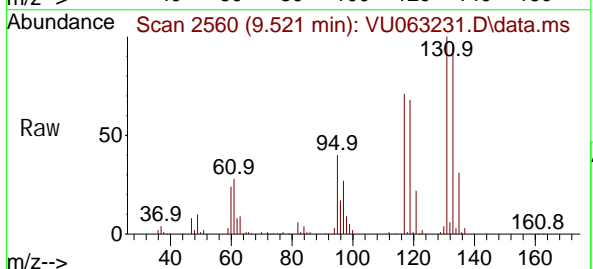
Instrument : MSVOA_U
 ClientSampleId :



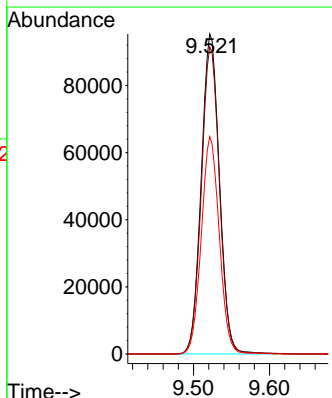
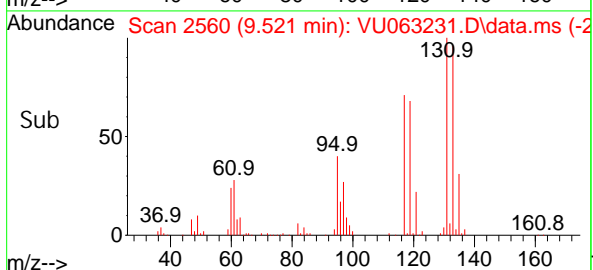
Tgt Ion: 112 Resp: 437137
 Ion Ratio Lower Upper
 112 100
 114 32.0 25.7 38.5

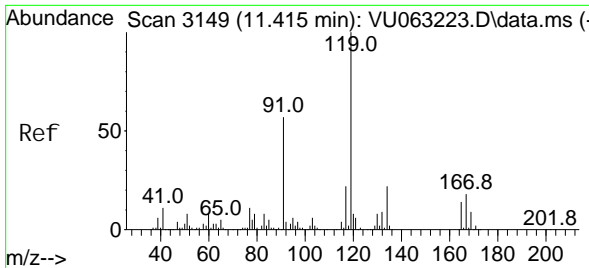


#60
 1,1,1,2-Tetrachloroethane
 Concen: 10.171 ug/l
 RT: 9.521 min Scan# 2560
 Delta R.T. 0.000 min
 Lab File: VU063231.D
 Acq: 10 Feb 2025 20:54



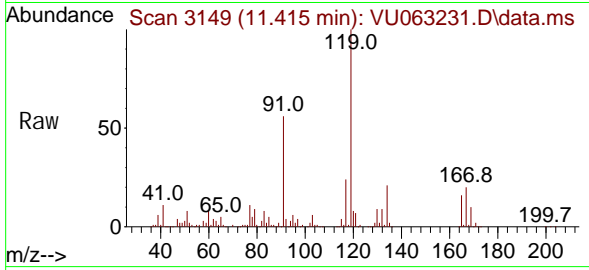
Tgt Ion: 131 Resp: 158239
 Ion Ratio Lower Upper
 131 100
 133 96.1 76.7 115.1
 119 67.2 54.4 81.6



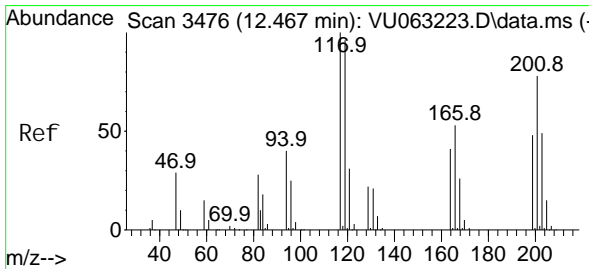
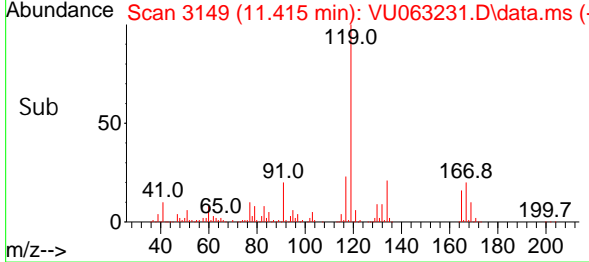
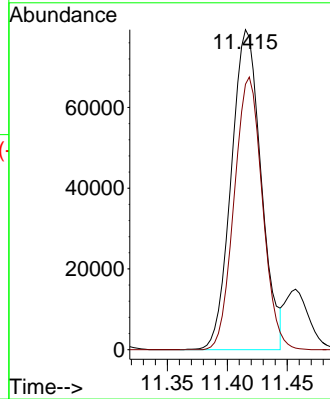


#61
 Pentachloroethane
 Concen: 9.894 ug/l
 RT: 11.415 min Scan# 3149
 Delta R.T. 0.000 min
 Lab File: VU063231.D
 Acq: 10 Feb 2025 20:54

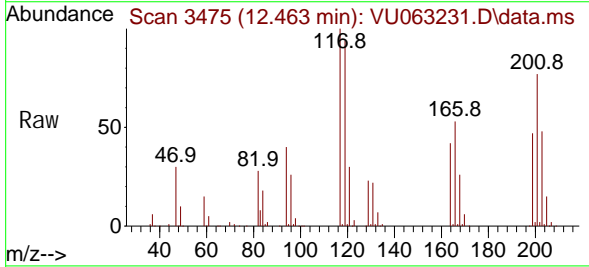
Instrument : MSVOA_U
 ClientSampleId :



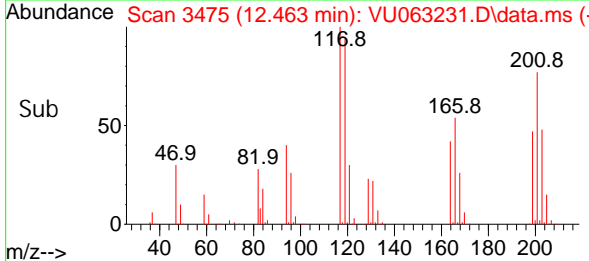
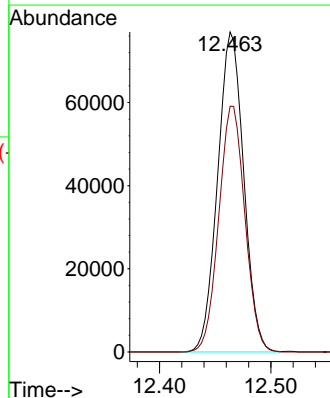
Tgt Ion: 117 Resp: 137502
 Ion Ratio Lower Upper
 117 100
 167 80.6 65.0 97.6

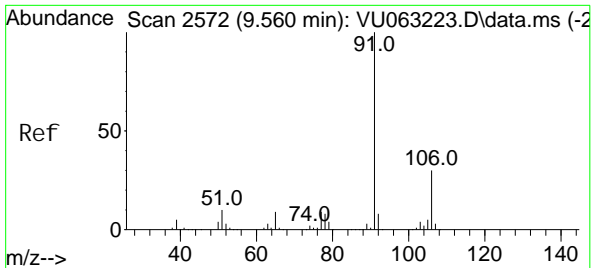


#62
 Hexachloroethane
 Concen: 10.190 ug/l
 RT: 12.463 min Scan# 3475
 Delta R.T. -0.003 min
 Lab File: VU063231.D
 Acq: 10 Feb 2025 20:54



Tgt Ion: 117 Resp: 125289
 Ion Ratio Lower Upper
 117 100
 201 77.0 61.3 91.9

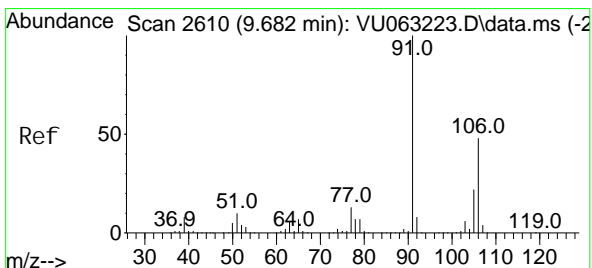
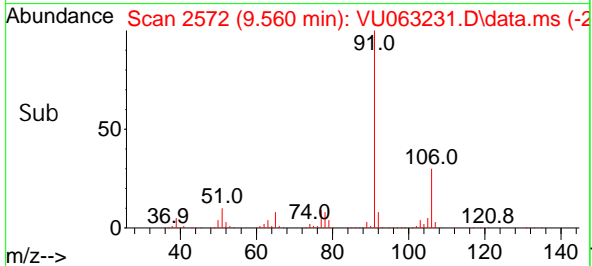
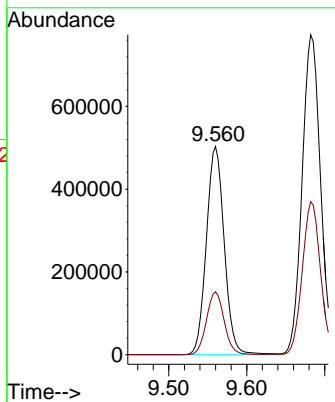
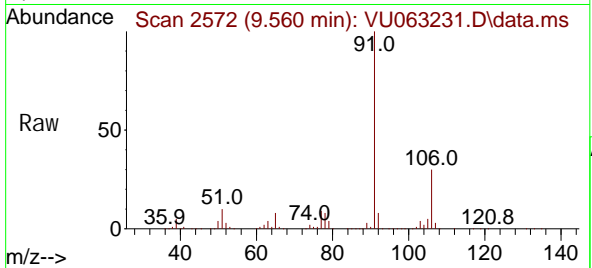




#63
 Ethyl Benzene
 Concen: 10.754 ug/l
 RT: 9.560 min Scan# 2572
 Delta R.T. 0.000 min
 Lab File: VU063231.D
 Acq: 10 Feb 2025 20:54

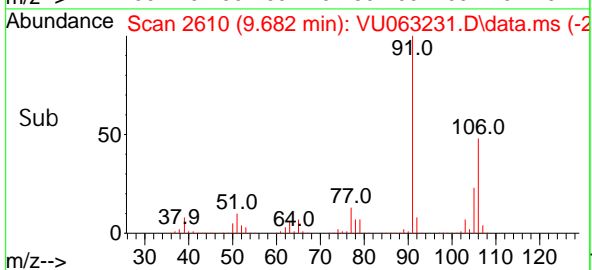
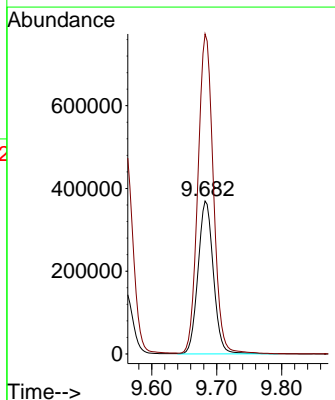
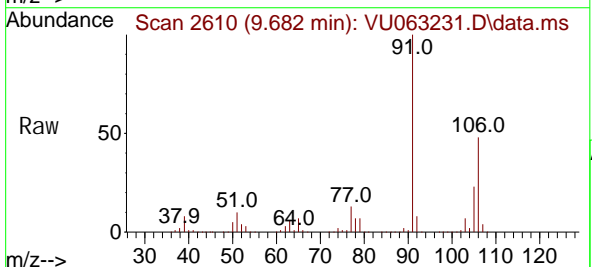
Instrument :
 MSVOA_U
 ClientSampleId :

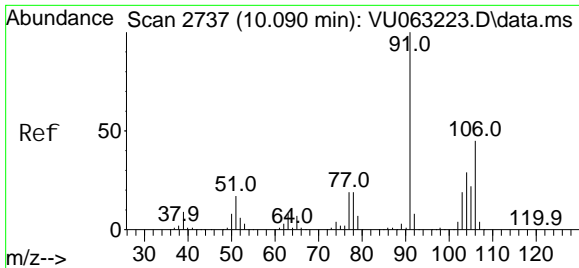
Tgt Ion: 91 Resp: 802752
 Ion Ratio Lower Upper
 91 100
 106 30.2 24.2 36.2



#64
 m/p-Xyl enes
 Concen: 21.803 ug/l
 RT: 9.682 min Scan# 2610
 Delta R.T. 0.000 min
 Lab File: VU063231.D
 Acq: 10 Feb 2025 20:54

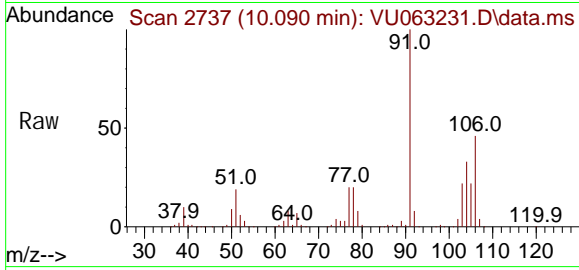
Tgt Ion: 106 Resp: 607939
 Ion Ratio Lower Upper
 106 100
 91 210.9 166.9 250.3



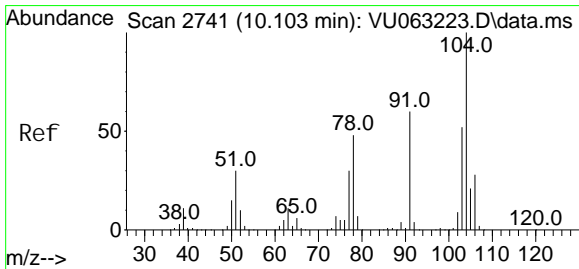
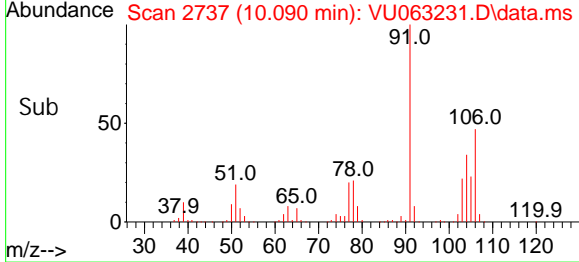
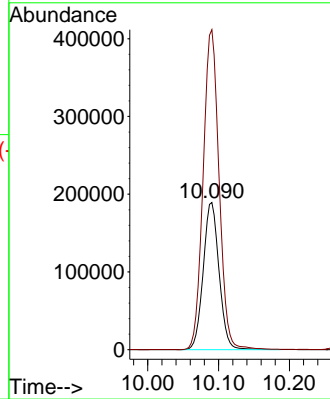


#65
 o-Xyl ene
 Concen: 10.779 ug/l
 RT: 10.090 min Scan# 2737
 Delta R.T. 0.000 min
 Lab File: VU063231.D
 Acq: 10 Feb 2025 20:54

Instrument :
 MSVOA_U
 ClientSampleId :

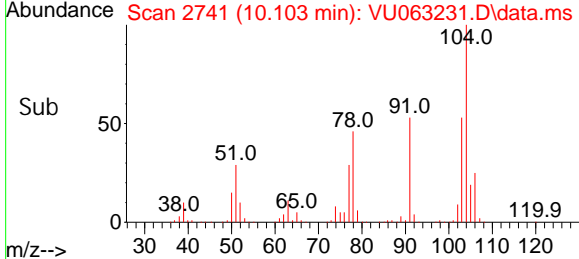
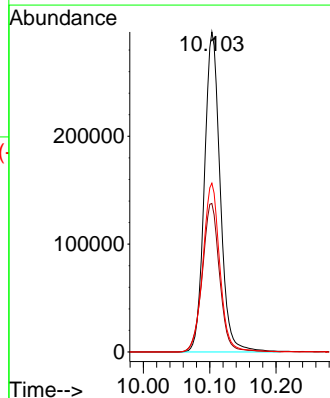
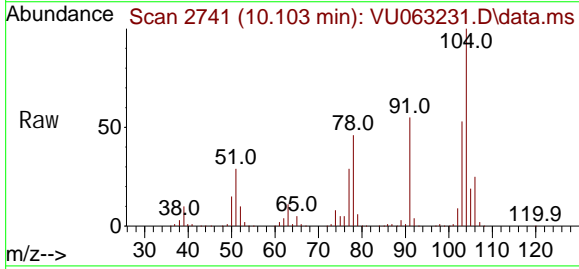


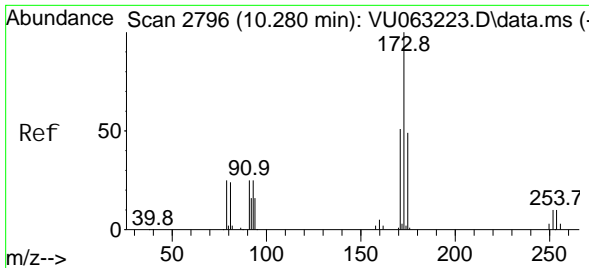
Tgt Ion: 106 Resp: 294222
 Ion Ratio Lower Upper
 106 100
 91 219.3 110.9 332.9



#66
 Styrene
 Concen: 11.320 ug/l
 RT: 10.103 min Scan# 2741
 Delta R.T. 0.000 min
 Lab File: VU063231.D
 Acq: 10 Feb 2025 20:54

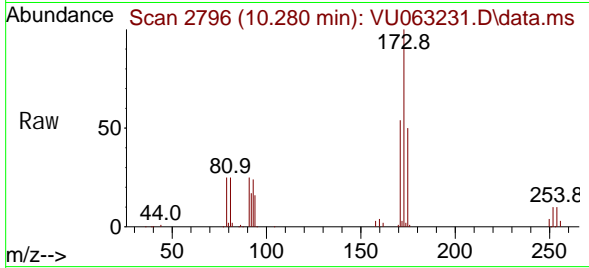
Tgt Ion: 104 Resp: 491754
 Ion Ratio Lower Upper
 104 100
 78 50.8 41.2 61.8
 103 56.5 44.8 67.2



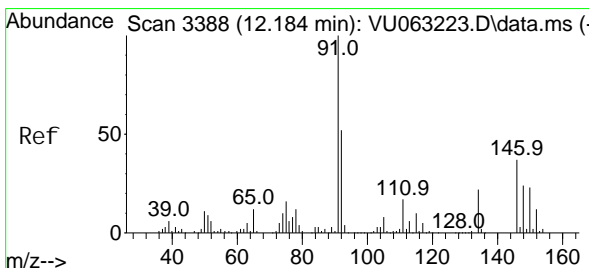
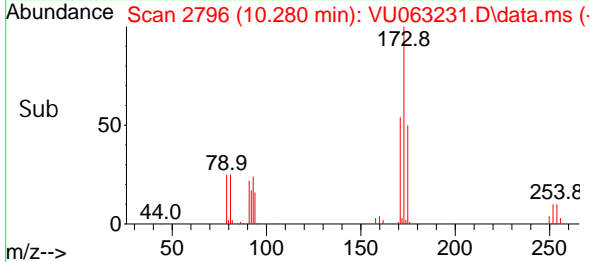
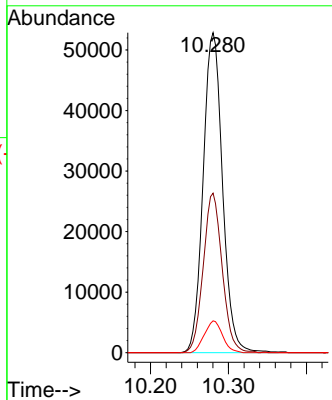


#67
 Bromoform
 Concen: 10.976 ug/l
 RT: 10.280 min Scan# 2796
 Delta R.T. 0.000 min
 Lab File: VU063231.D
 Acq: 10 Feb 2025 20:54

Instrument :
 MSVOA_U
 ClientSampleId :

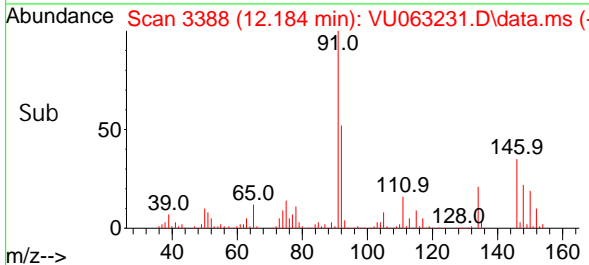
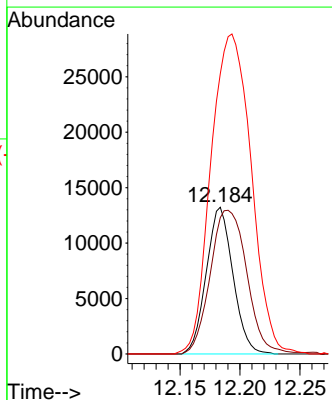
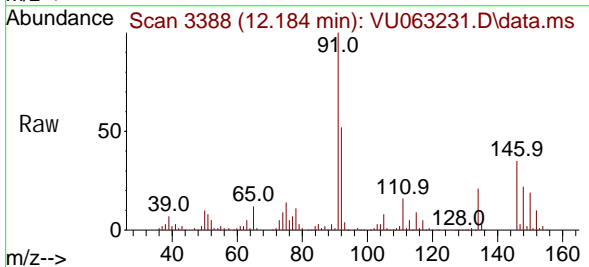


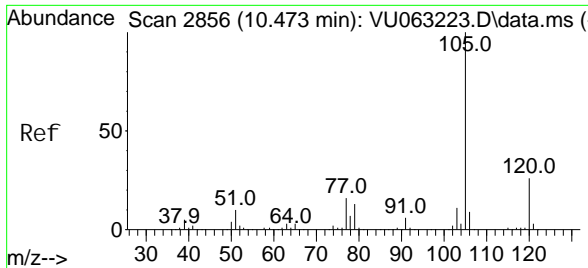
Tgt Ion	Resp	Lower	Upper
173	100		
175	48.7	39.0	58.4
254	9.3	7.7	11.5



#68
 1,2-Di chlorobenzene-d4
 Concen: 1.029 ug/l
 RT: 12.184 min Scan# 3388
 Delta R.T. 0.000 min
 Lab File: VU063231.D
 Acq: 10 Feb 2025 20:54

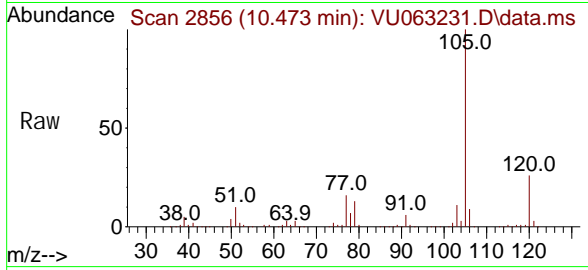
Tgt Ion	Resp	Lower	Upper
152	100		
115	134.3	0.0	275.2
150	328.4	0.0	658.4



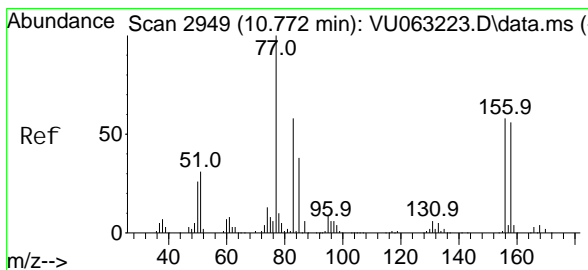
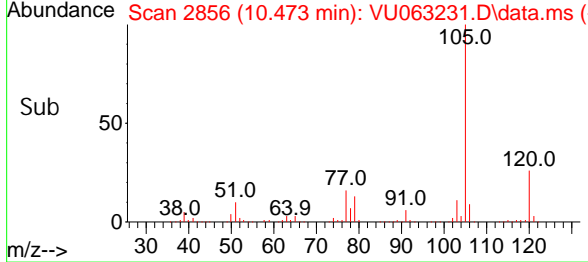
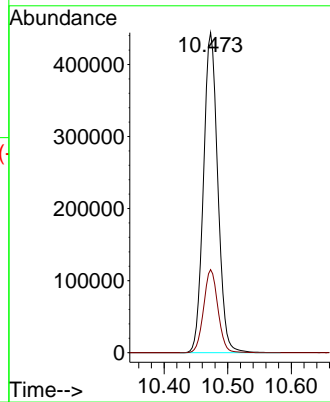


#69
 Isopropyl benzene
 Concen: 10.806 ug/l
 RT: 10.473 min Scan# 2856
 Delta R.T. 0.000 min
 Lab File: VU063231.D
 Acq: 10 Feb 2025 20: 54

Instrument :
 MSVOA_U
 ClientSampleId :

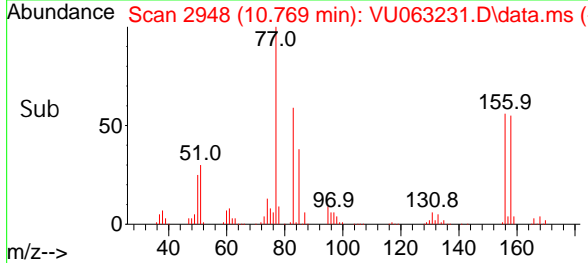
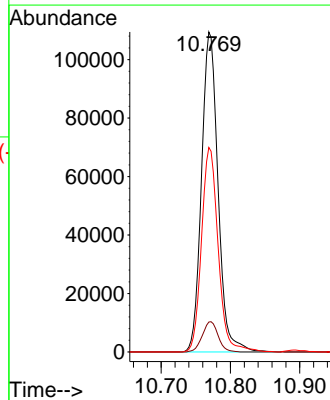
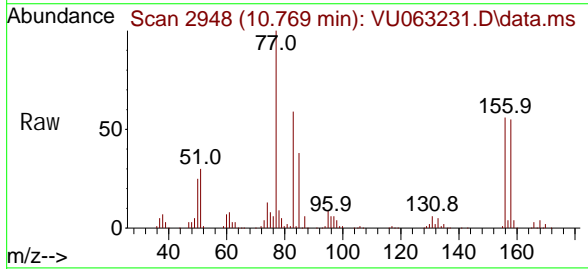


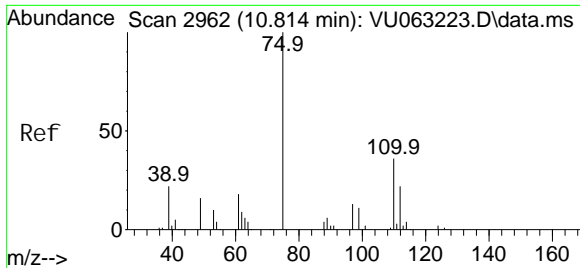
Tgt Ion: 105 Resp: 693458
 Ion Ratio Lower Upper
 105 100
 120 25.9 12.8 38.4



#70
 1,1,2,2-Tetrachloroethane
 Concen: 10.541 ug/l
 RT: 10.769 min Scan# 2948
 Delta R.T. -0.003 min
 Lab File: VU063231.D
 Acq: 10 Feb 2025 20: 54

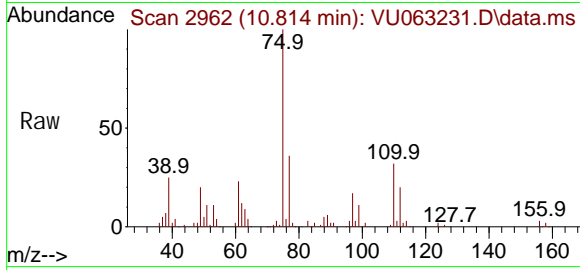
Tgt Ion: 83 Resp: 181075
 Ion Ratio Lower Upper
 83 100
 131 9.0 7.4 11.0
 85 64.5 51.8 77.8





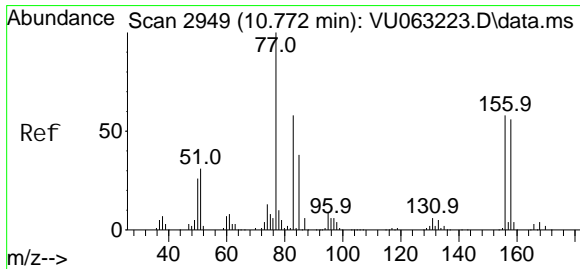
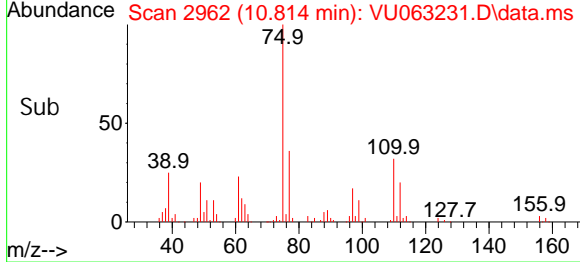
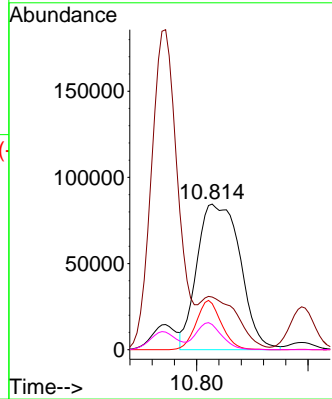
#71
 1, 2, 3-Tri chloropropane
 Concen: 17.647 ug/l
 RT: 10.814 min Scan# 2962
 Delta R.T. 0.000 min
 Lab File: VU063231.D
 Acq: 10 Feb 2025 20:54

Instrument : MSVOA_U
 ClientSampleId :



Tgt Ion: 75 Resp: 227746

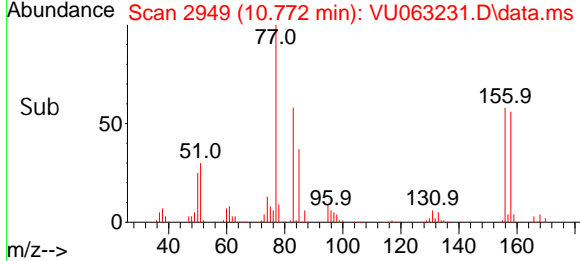
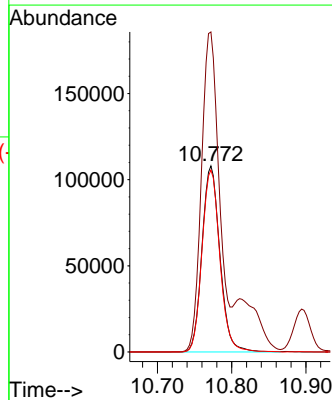
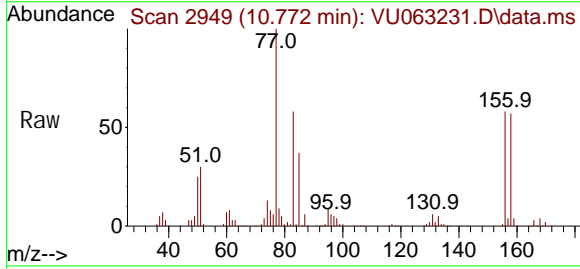
Ion	Ratio	Lower	Upper
75	100		
77	0.0	0.0	0.0
110	19.9	0.0	77.0
97	11.3	0.0	42.2

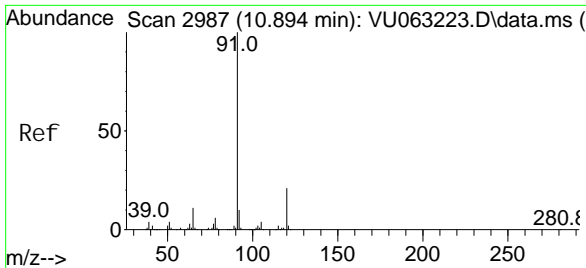


#72
 Bromobenzene
 Concen: 10.465 ug/l
 RT: 10.772 min Scan# 2949
 Delta R.T. 0.000 min
 Lab File: VU063231.D
 Acq: 10 Feb 2025 20:54

Tgt Ion: 156 Resp: 180941

Ion	Ratio	Lower	Upper
156	100		
77	171.5	0.0	343.6
158	97.2	0.0	193.0

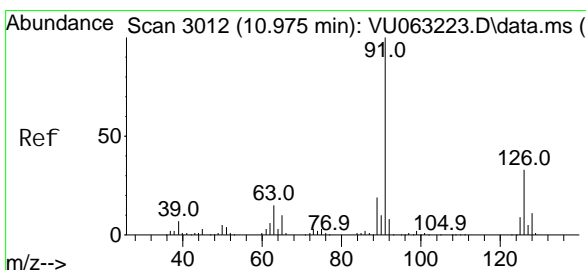
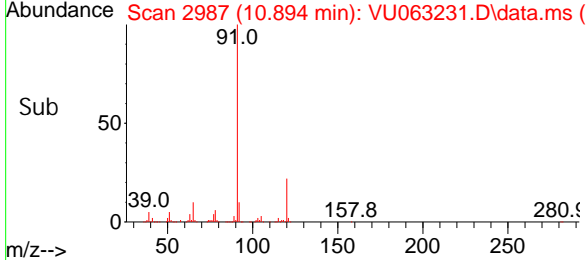
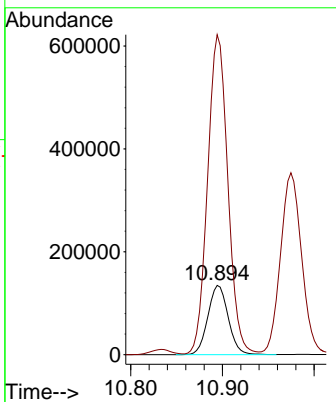
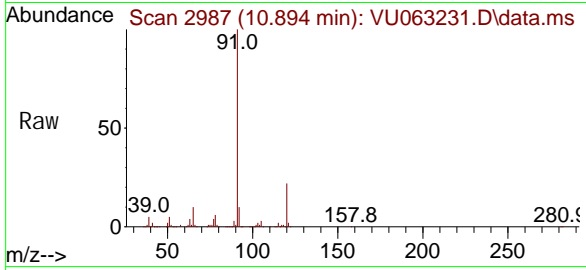




#73
 n-propyl benzene
 Concen: 11.278 ug/l
 RT: 10.894 min Scan# 2987
 Delta R.T. 0.000 min
 Lab File: VU063231.D
 Acq: 10 Feb 2025 20: 54

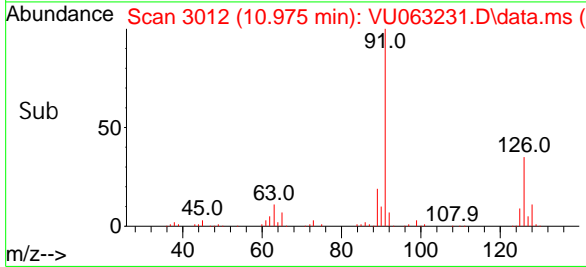
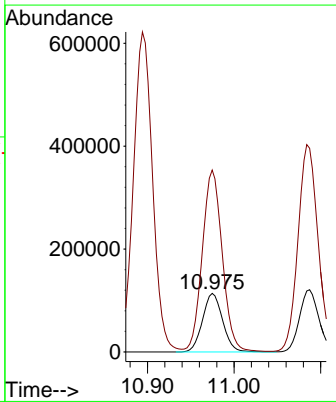
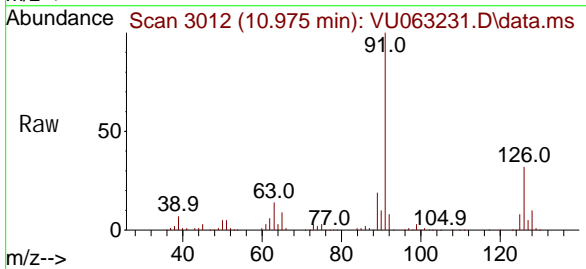
Instrument : MSVOA_U
 ClientSampleId :

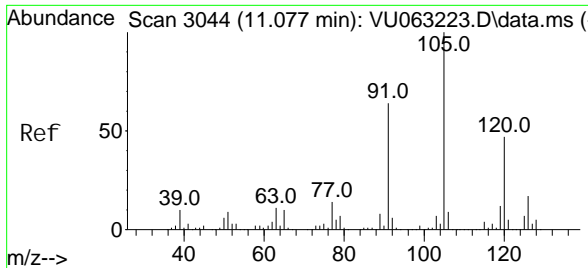
Tgt Ion: 120 Resp: 207215
 Ion Ratio Lower Upper
 120 100
 91 457.5 369.8 554.6



#74
 2-Chlorotoluene
 Concen: 10.837 ug/l
 RT: 10.975 min Scan# 3012
 Delta R.T. 0.000 min
 Lab File: VU063231.D
 Acq: 10 Feb 2025 20: 54

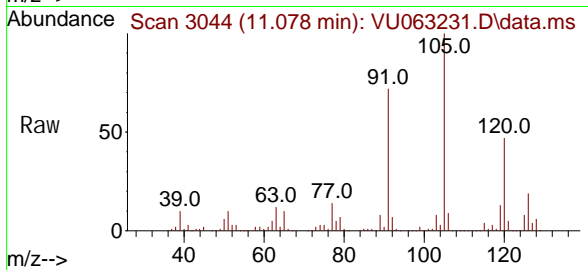
Tgt Ion: 126 Resp: 183507
 Ion Ratio Lower Upper
 126 100
 91 306.7 0.0 623.8



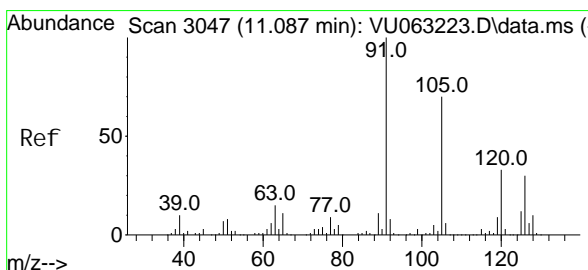
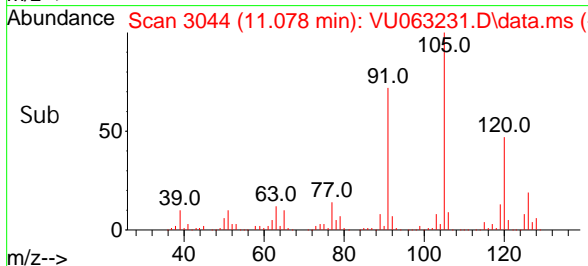
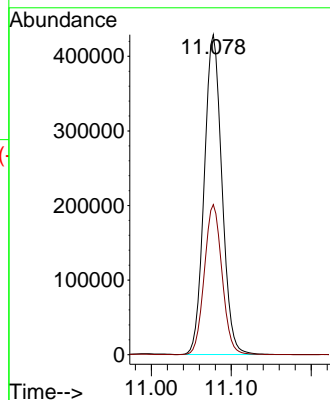


#75
 1, 3, 5-Tri methyl benzene
 Concen: 11.119 ug/l
 RT: 11.078 min Scan# 3044
 Delta R.T. 0.000 min
 Lab File: VU063231.D
 Acq: 10 Feb 2025 20:54

Instrument : MSVOA_U
 ClientSampleId :

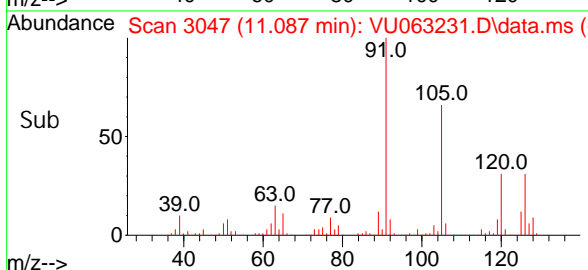
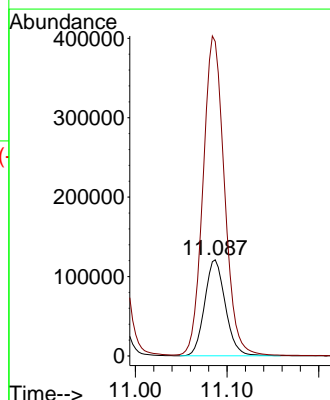
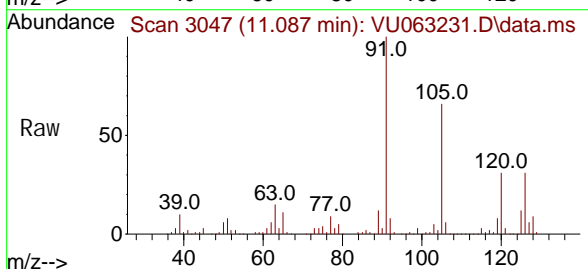


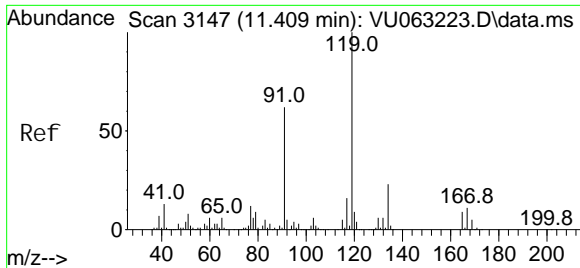
Tgt Ion: 105 Resp: 661158
 Ion Ratio Lower Upper
 105 100
 120 46.8 37.3 55.9



#76
 4-Chlorotoluene
 Concen: 10.913 ug/l
 RT: 11.087 min Scan# 3047
 Delta R.T. 0.000 min
 Lab File: VU063231.D
 Acq: 10 Feb 2025 20:54

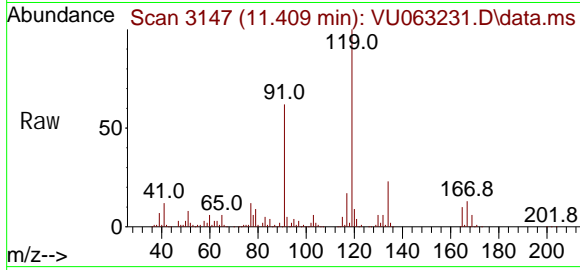
Tgt Ion: 126 Resp: 189495
 Ion Ratio Lower Upper
 126 100
 91 343.6 0.0 703.6





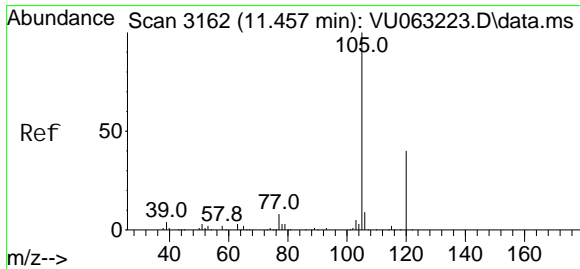
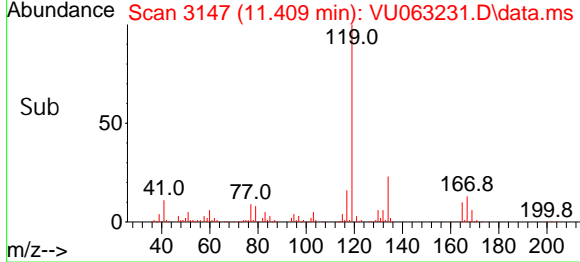
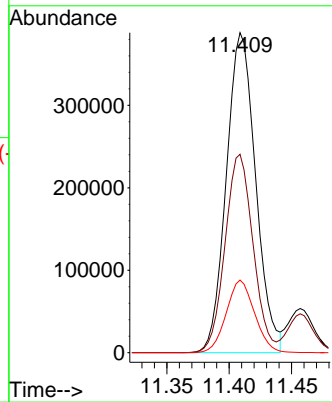
#77
 tert-Butyl benzene
 Concen: 10.576 ug/l
 RT: 11.409 min Scan# 3147
 Delta R.T. 0.000 min
 Lab File: VU063231.D
 Acq: 10 Feb 2025 20:54

Instrument : MSVOA_U
 ClientSampleId :



Tgt Ion: 119 Resp: 636025

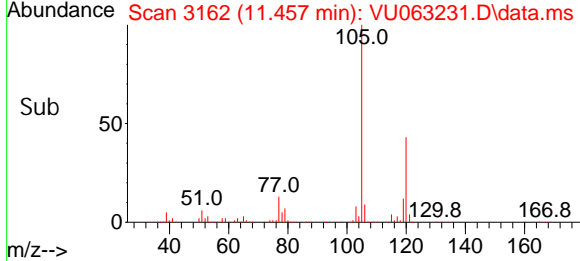
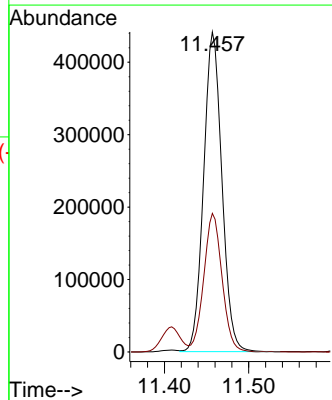
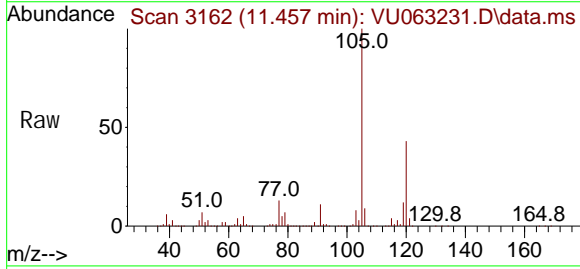
Ion	Ratio	Lower	Upper
119	100		
91	59.1	29.4	88.3
134	21.9	17.6	26.4

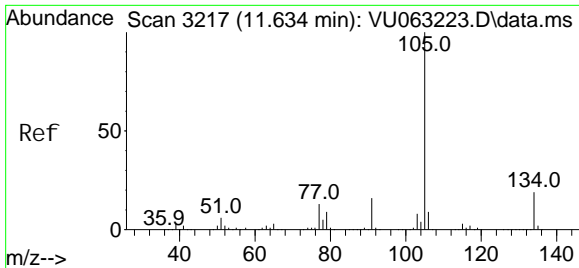


#78
 1,2,4-Tri methyl benzene
 Concen: 11.332 ug/l
 RT: 11.457 min Scan# 3162
 Delta R.T. 0.000 min
 Lab File: VU063231.D
 Acq: 10 Feb 2025 20:54

Tgt Ion: 105 Resp: 668611

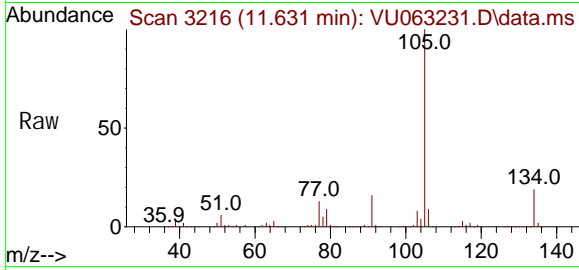
Ion	Ratio	Lower	Upper
105	100		
120	43.2	21.9	65.7



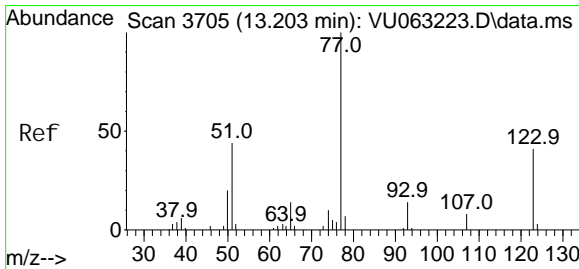
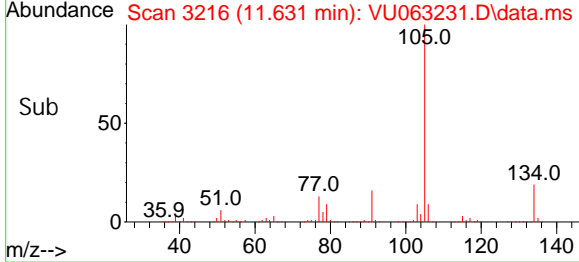
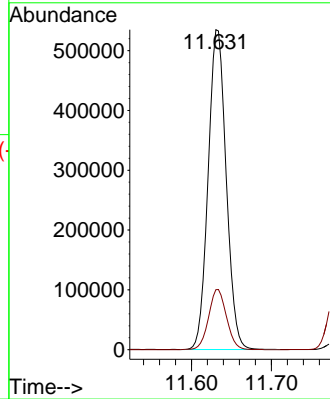


#79
 sec-Butyl benzene
 Concen: 10.936 ug/l
 RT: 11.631 min Scan# 311
 Delta R.T. -0.003 min
 Lab File: VU063231.D
 Acq: 10 Feb 2025 20:54

Instrument : MSVOA_U
 ClientSampleId :

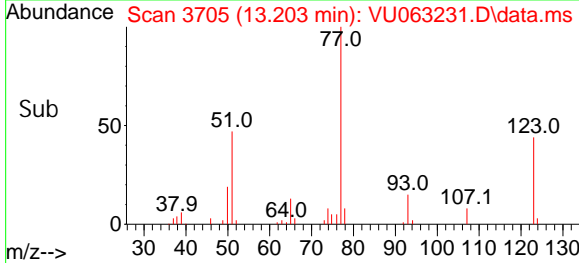
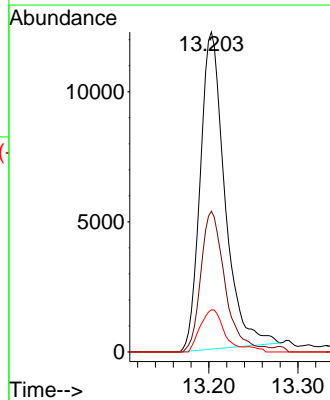
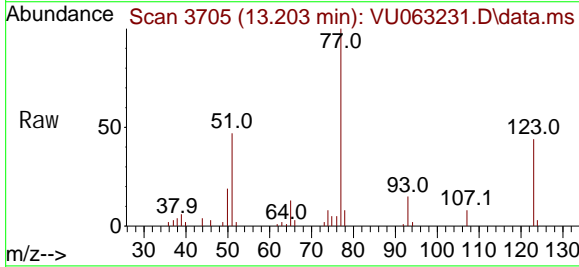


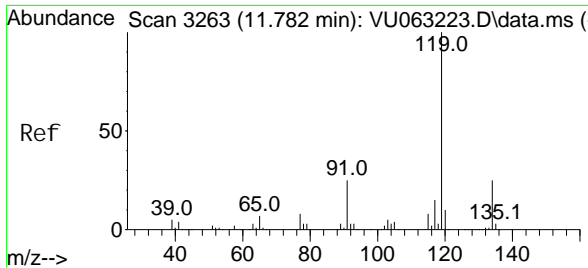
Tgt Ion: 105 Resp: 837377
 Ion Ratio Lower Upper
 105 100
 134 18.8 15.1 22.7



#80
 Ni trobenzene
 Concen: 46.299 ug/l
 RT: 13.203 min Scan# 3705
 Delta R.T. 0.000 min
 Lab File: VU063231.D
 Acq: 10 Feb 2025 20:54

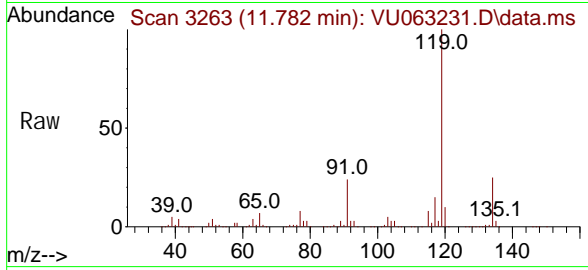
Tgt Ion: 77 Resp: 23403
 Ion Ratio Lower Upper
 77 100
 123 42.1 18.9 67.1
 65 11.3 11.9 15.1#



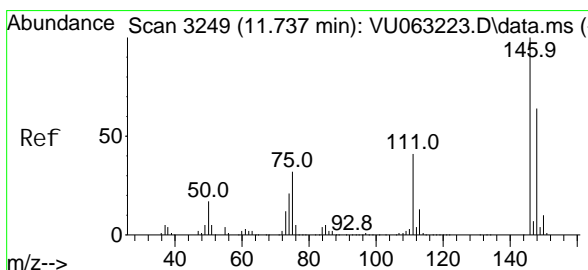
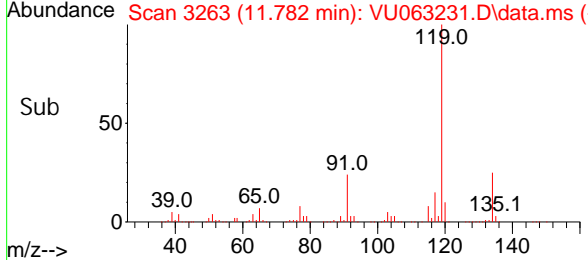
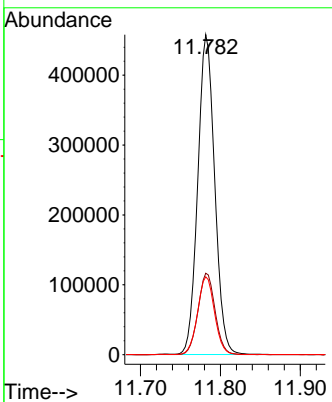


#81
 p-Iso propyl toluene
 Concen: 11.175 ug/l
 RT: 11.782 min Scan# 31
 Delta R.T. 0.000 min
 Lab File: VU063231.D
 Acq: 10 Feb 2025 20: 54

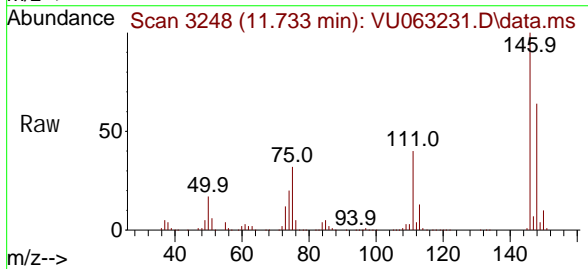
Instrument :
 MSVOA_U
 ClientSampleId :



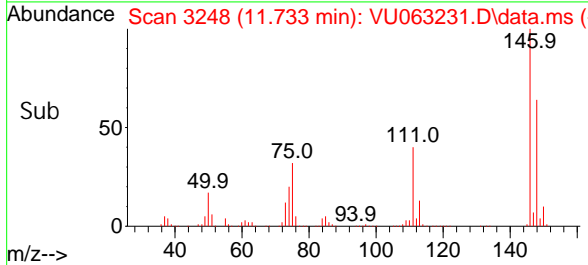
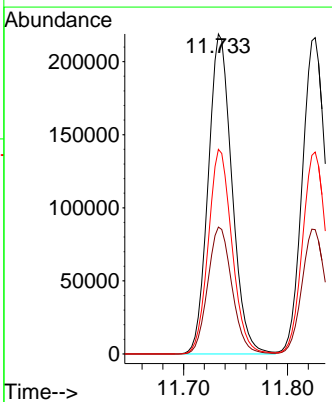
Tgt Ion: 119 Resp: 675250
 Ion Ratio Lower Upper
 119 100
 134 25.6 20.3 30.5
 91 24.4 19.4 29.2

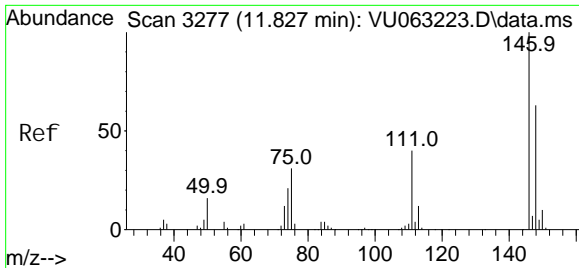


#82
 1,3-Di chl orobenzene
 Concen: 10.380 ug/l
 RT: 11.733 min Scan# 3248
 Delta R.T. -0.003 min
 Lab File: VU063231.D
 Acq: 10 Feb 2025 20: 54



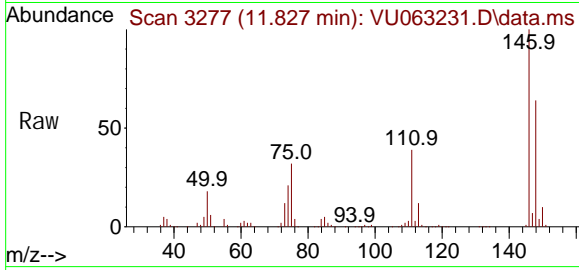
Tgt Ion: 146 Resp: 348126
 Ion Ratio Lower Upper
 146 100
 111 40.4 32.8 49.2
 148 63.8 51.1 76.7



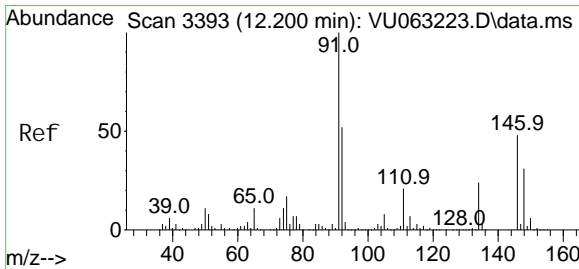
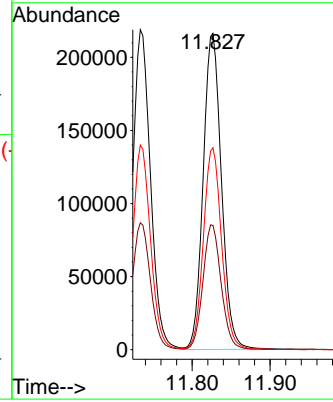
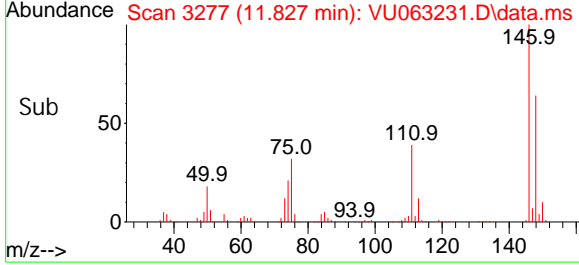


#83
 1,4-Dichlorobenzene
 Concen: 10.724 ug/l
 RT: 11.827 min Scan# 31
 Delta R.T. 0.000 min
 Lab File: VU063231.D
 Acq: 10 Feb 2025 20:54

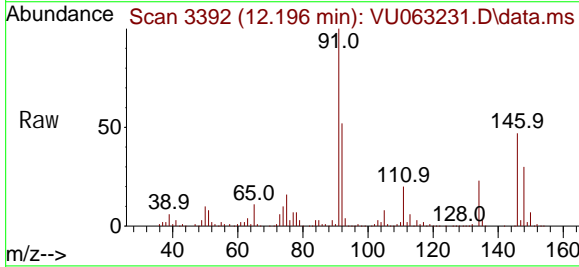
Instrument :
 MSVOA_U
 ClientSampleId :



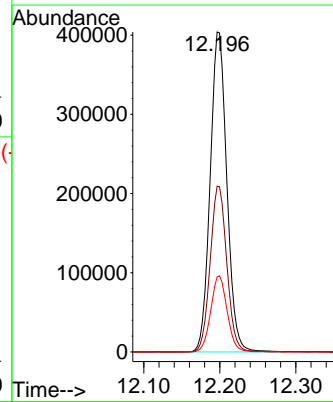
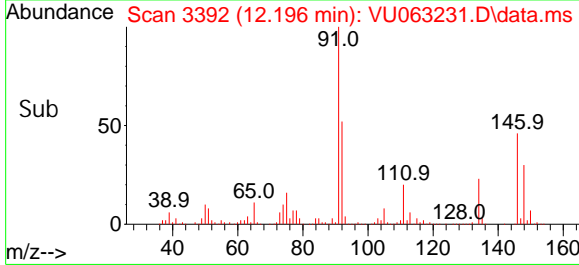
Tgt Ion: 146 Resp: 351795
 Ion Ratio Lower Upper
 146 100
 111 39.4 32.1 48.1
 148 63.7 50.2 75.4

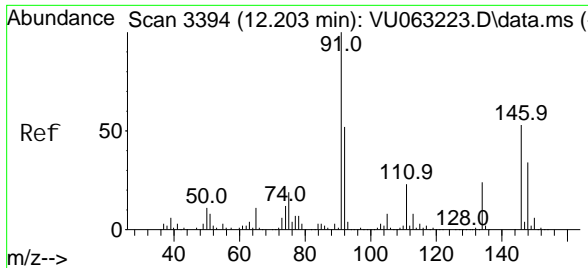


#84
 n-Butyl benzene
 Concen: 11.363 ug/l
 RT: 12.196 min Scan# 3392
 Delta R.T. -0.003 min
 Lab File: VU063231.D
 Acq: 10 Feb 2025 20:54



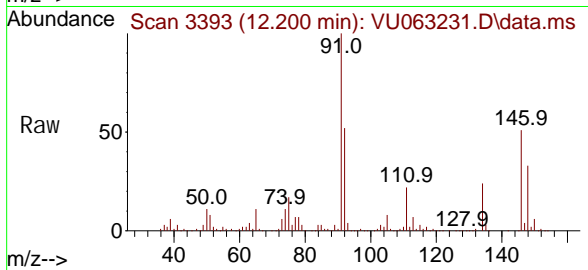
Tgt Ion: 91 Resp: 615701
 Ion Ratio Lower Upper
 91 100
 92 51.7 41.8 62.8
 134 23.5 18.6 28.0



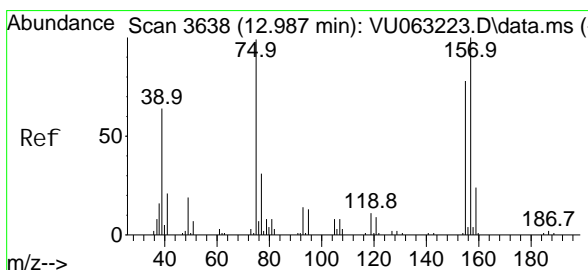
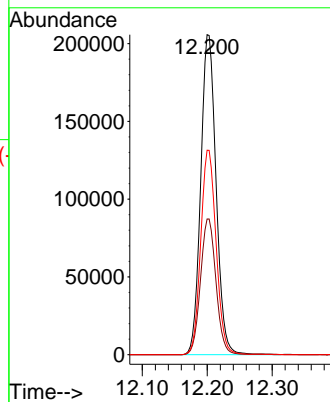
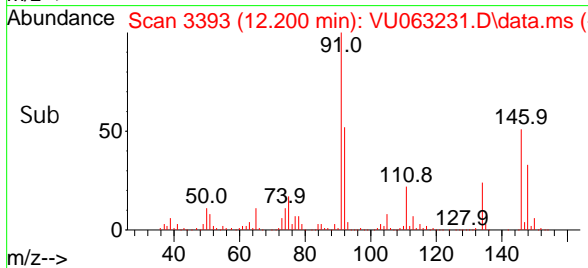


#85
 1, 2-Di chl orobenzene
 Concen: 10.516 ug/l
 RT: 12.200 min Scan# 3393
 Delta R.T. -0.003 min
 Lab File: VU063231.D
 Acq: 10 Feb 2025 20:54

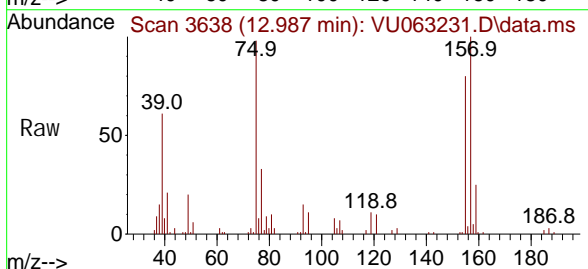
Instrument : MSVOA_U
 ClientSampleId :



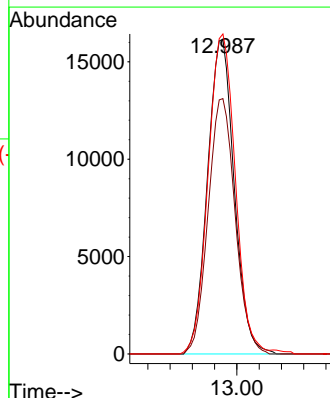
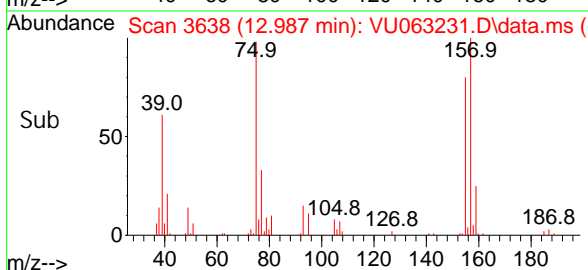
Tgt Ion: 146 Resp: 338915
 Ion Ratio Lower Upper
 146 100
 111 42.7 21.9 65.7
 148 64.1 32.3 96.9

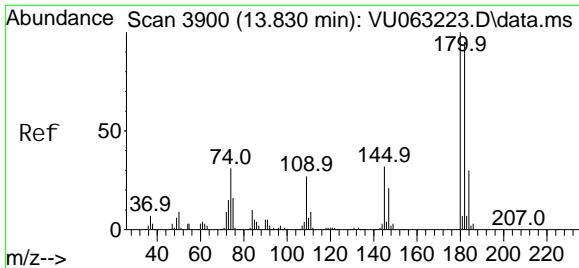


#86
 1, 2-Di bromo-3-Chl oropropane
 Concen: 11.196 ug/l
 RT: 12.987 min Scan# 3638
 Delta R.T. 0.000 min
 Lab File: VU063231.D
 Acq: 10 Feb 2025 20:54



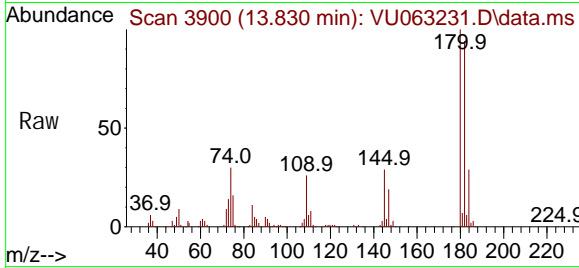
Tgt Ion: 75 Resp: 26996
 Ion Ratio Lower Upper
 75 100
 155 82.0 63.5 95.3
 157 103.9 81.8 122.6



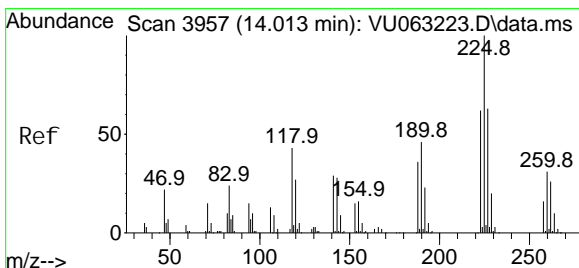
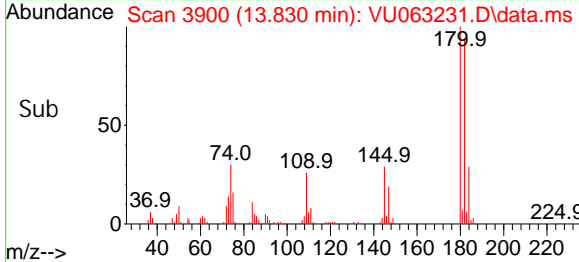
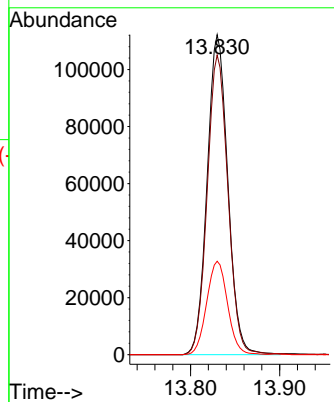


#87
 1, 2, 4-Tri chlorobenzene
 Concen: 11.525 ug/l
 RT: 13.830 min Scan# 3900
 Delta R.T. 0.000 min
 Lab File: VU063231.D
 Acq: 10 Feb 2025 20:54

Instrument : MSVOA_U
 ClientSampleId :

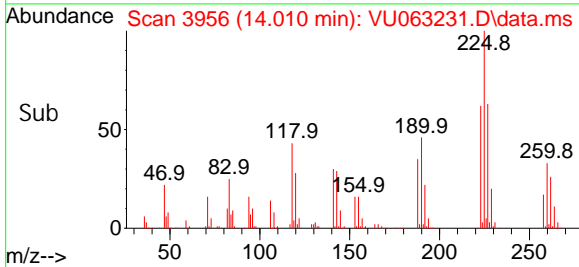
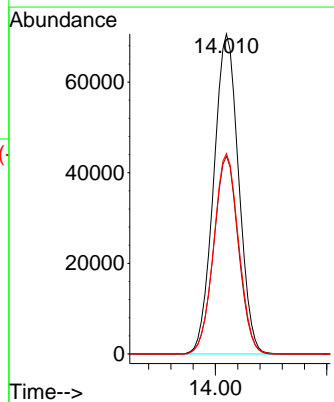
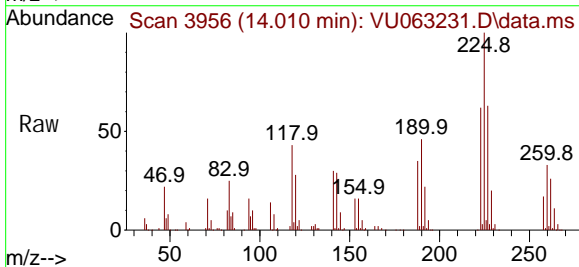


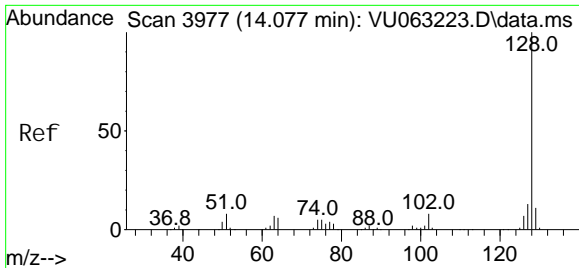
Tgt Ion: 180 Resp: 181158
 Ion Ratio Lower Upper
 180 100
 182 93.9 76.6 115.0
 145 29.5 25.4 38.2



#88
 Hexachl orobutadi ene
 Concen: 9.779 ug/l
 RT: 14.010 min Scan# 3956
 Delta R.T. -0.003 min
 Lab File: VU063231.D
 Acq: 10 Feb 2025 20:54

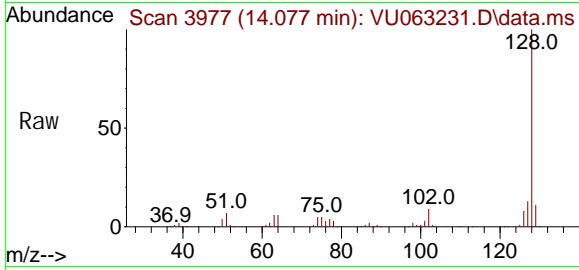
Tgt Ion: 225 Resp: 109859
 Ion Ratio Lower Upper
 225 100
 223 61.1 49.5 74.3
 227 62.6 51.0 76.4



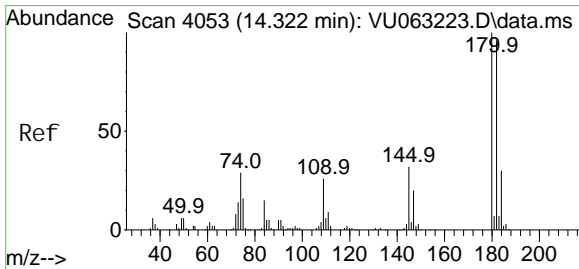
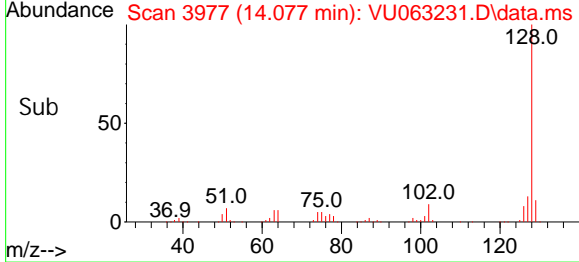
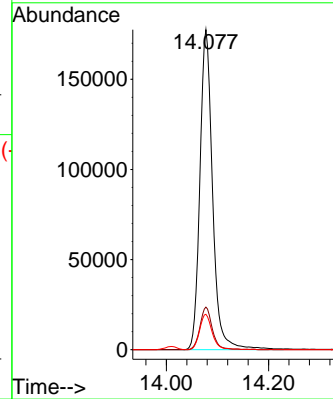


#89
 Naphthalene
 Concen: 9.363 ug/l
 RT: 14.077 min Scan# 3977
 Delta R.T. 0.000 min
 Lab File: VU063231.D
 Acq: 10 Feb 2025 20:54

Instrument :
 MSVOA_U
 ClientSampleId :



Tgt Ion: 128 Resp: 305890
 Ion Ratio Lower Upper
 128 100
 127 12.9 10.6 16.0
 129 10.8 8.6 13.0



#90
 1,2,3-Trichlorobenzene
 Concen: 11.568 ug/l
 RT: 14.319 min Scan# 4052
 Delta R.T. -0.003 min
 Lab File: VU063231.D
 Acq: 10 Feb 2025 20:54

Tgt Ion: 180 Resp: 177916
 Ion Ratio Lower Upper
 180 100
 182 94.7 78.2 117.2
 145 32.1 26.1 39.1

