

Data Path : Z:\voasrv\HPCHEM1\MSVOA_U\Data\VU030722\
 Data File : VU047362.D
 Acq On : 07 Mar 2022 13:10
 Operator : SY/MD
 Sample : VIBLK
 Misc : 25.0mL/MSVOA_U/WATER
 ALS Vial : 8 Sample Multiplier: 1

Instrument :
 MSVOA_U
 ClientSampleId :
 VIBLK008

Quant Time: Mar 08 03:00:21 2022
 Quant Method : Z:\voasrv\HPCHEM1\MSVOA_U\Method\SFAMUTR030422WMA.M
 Quant Title : TRACE VOA SFAM1.0
 QLast Update : Fri Mar 04 23:20:39 2022
 Response via : Initial Calibration

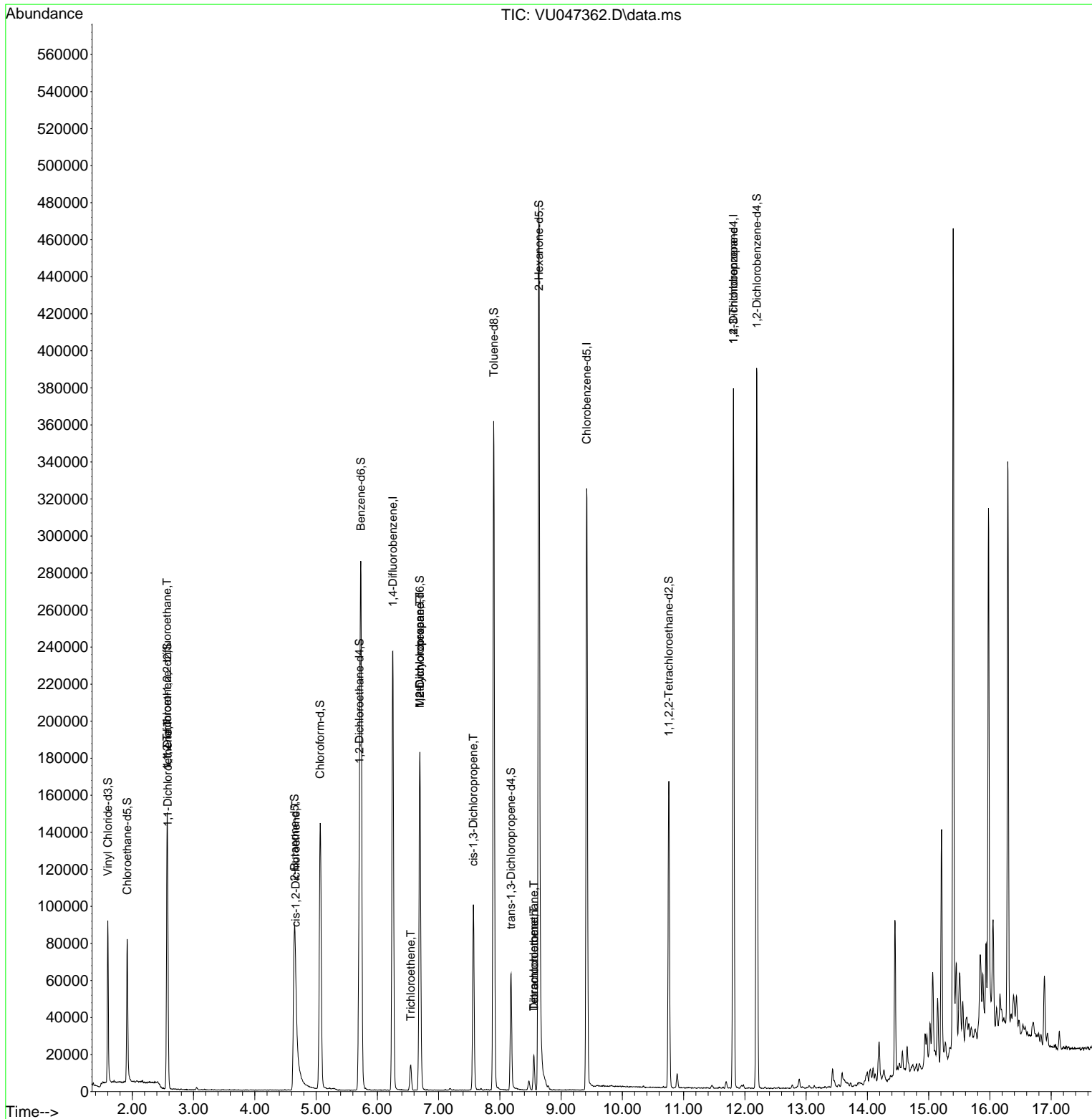
Compound	R.T.	QIon	Response	Conc	Units	Dev(Min)
Internal Standards						
1) 1,4-Difluorobenzene	6.253	114	205807	5.000	ug/L	0.00
28) Chlorobenzene-d5	9.417	117	193081	5.000	ug/L	0.00
58) 1,4-Dichlorobenzene-d4	11.813	152	107017	5.000	ug/L	0.00
System Monitoring Compounds						
4) Vinyl Chloride-d3	1.601	65	62645	4.289	ug/L	0.00
Spiked Amount	5.000	Range 40 - 130	Recovery	=	85.800%	
7) Chloroethane-d5	1.916	69	58726	4.819	ug/L	0.00
Spiked Amount	5.000	Range 65 - 130	Recovery	=	96.400%	
11) 1,1-Dichloroethene-d2	2.572	65	27514	4.460	ug/L	0.00
Spiked Amount	5.000	Range 60 - 125	Recovery	=	89.200%	
20) 2-Butanone-d5	4.649	46	204682	42.682	ug/L	0.00
Spiked Amount	50.000	Range 40 - 130	Recovery	=	85.360%	
24) Chloroform-d	5.067	84	135165	5.008	ug/L	0.00
Spiked Amount	5.000	Range 70 - 125	Recovery	=	100.200%	
26) 1,2-Dichloroethane-d4	5.707	65	76104	5.024	ug/L	0.00
Spiked Amount	5.000	Range 70 - 130	Recovery	=	100.400%	
32) Benzene-d6	5.732	84	275295	5.062	ug/L	0.00
Spiked Amount	5.000	Range 70 - 125	Recovery	=	101.200%	
36) 1,2-Dichloropropane-d6	6.694	67	88093	5.201	ug/L	0.00
Spiked Amount	5.000	Range 60 - 140	Recovery	=	104.000%	
41) Toluene-d8	7.899	98	247613	4.823	ug/L	0.00
Spiked Amount	5.000	Range 70 - 130	Recovery	=	96.400%	
43) trans-1,3-Dichloroprop...	8.182	79	35197	4.729	ug/L	0.00
Spiked Amount	5.000	Range 55 - 130	Recovery	=	94.600%	
46) 2-Hexanone-d5	8.636	63	193948	45.788	ug/L	0.00
Spiked Amount	50.000	Range 45 - 130	Recovery	=	91.580%	
56) 1,1,2,2-Tetrachloroeth...	10.758	84	82464	4.779	ug/L	0.00
Spiked Amount	5.000	Range 65 - 120	Recovery	=	95.600%	
66) 1,2-Dichlorobenzene-d4	12.195	152	109010	5.198	ug/L	0.00
Spiked Amount	5.000	Range 80 - 120	Recovery	=	104.000%	
Target Compounds						
10) 1,1,2-Trichloro-1,2,2-...	2.569	101	737	0.074	ug/L #	21
12) 1,1-Dichloroethene	2.578	96	1805	0.179	ug/L #	1
22) cis-1,2-Dichloroethene	4.668	96	2264	0.190	ug/L	94
34) Trichloroethene	6.546	95	4298	0.375	ug/L	93
35) Methylcyclohexane	6.694	83	20203	1.150	ug/L #	18
37) 1,2-Dichloropropane	6.694	63	9455	0.875	ug/L #	88
39) cis-1,3-Dichloropropene	7.565	75	2270	0.132	ug/L #	51
47) Tetrachloroethene	8.555	164	4444	0.455	ug/L	90
49) Dibromochloromethane	8.555	129	4112	0.374	ug/L #	10
61) 1,2,3-Trichloropropane	11.813	75	11086	1.248	ug/L #	67

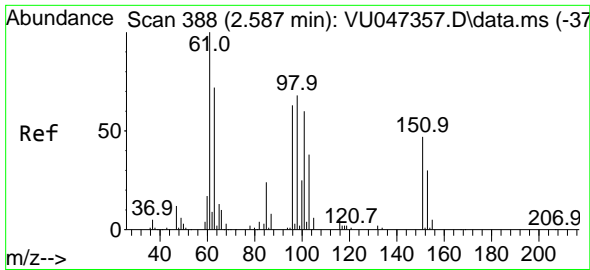
(#) = qualifier out of range (m) = manual integration (+) = signals summed

Data Path : Z:\voasrv\HPCHEM1\MSVOA_U\Data\VU030722\
 Data File : VU047362.D
 Acq On : 07 Mar 2022 13:10
 Operator : SY/MD
 Sample : VIBLK
 Misc : 25.0mL/MSVOA_U/WATER
 ALS Vial : 8 Sample Multiplier: 1

Instrument :
 MSVOA_U
 ClientSampleId :
 VIBLK008

Quant Time: Mar 08 03:00:21 2022
 Quant Method : Z:\voasrv\HPCHEM1\MSVOA_U\Method\SFAMUTR030422WMA.M
 Quant Title : TRACE VOA SFAM1.0
 QLast Update : Fri Mar 04 23:20:39 2022
 Response via : Initial Calibration



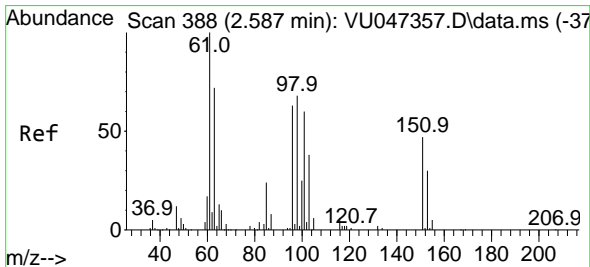
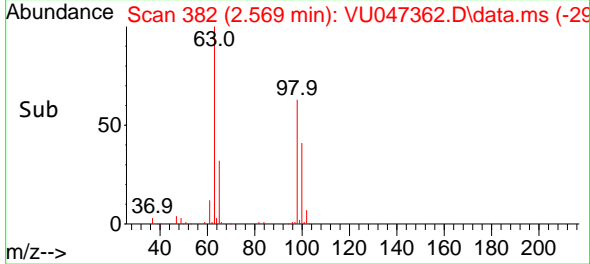
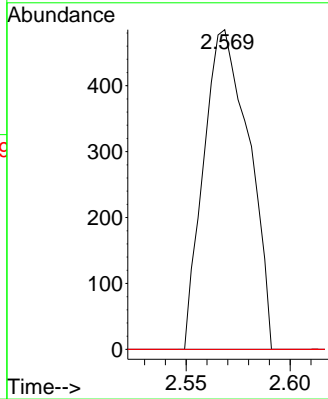
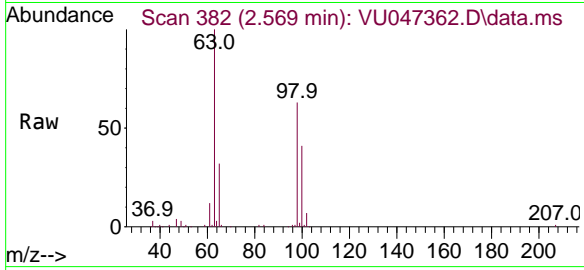


#10
 1,1,2-Trichloro-1,2,2-trifluoroethane
 Concen: 0.074 ug/L
 RT: 2.569 min Scan# 382
 Delta R.T. -0.019 min
 Lab File: VU047362.D
 Acq: 07 Mar 2022 13:10

Instrument :
 MSVOA_U
 ClientSampleId :
 VIBLK008

Tgt Ion:101 Resp: 737

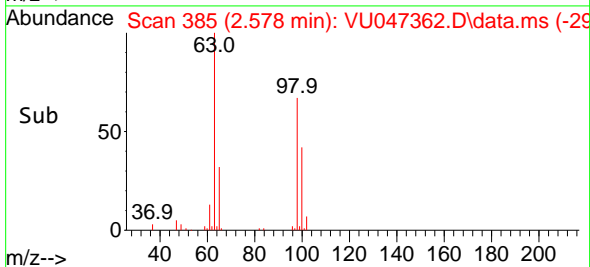
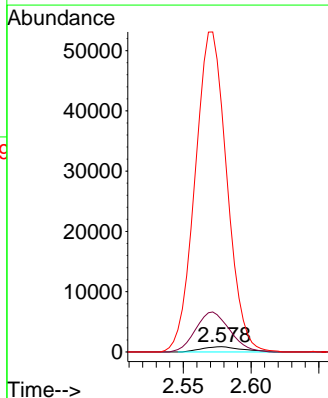
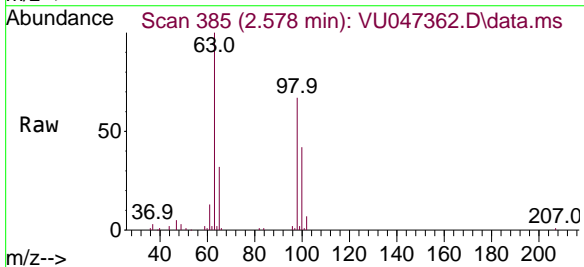
Ion	Ratio	Lower	Upper
101	100		
85	0.0	34.6	51.8#
151	0.0	56.1	84.1#

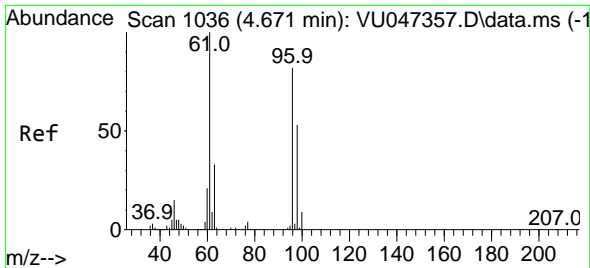


#12
 1,1-Dichloroethene
 Concen: 0.179 ug/L
 RT: 2.578 min Scan# 385
 Delta R.T. -0.009 min
 Lab File: VU047362.D
 Acq: 07 Mar 2022 13:10

Tgt Ion: 96 Resp: 1805

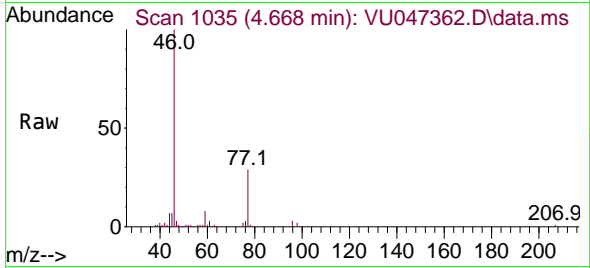
Ion	Ratio	Lower	Upper
96	100		
61	604.0	124.7	231.5#
63	4577.1	105.2	195.4#





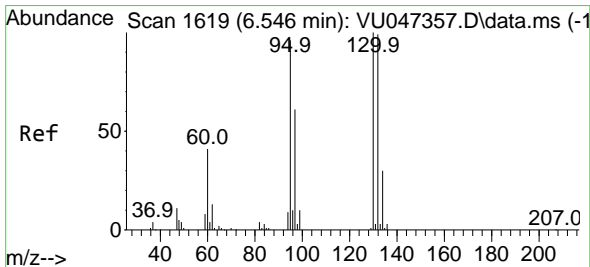
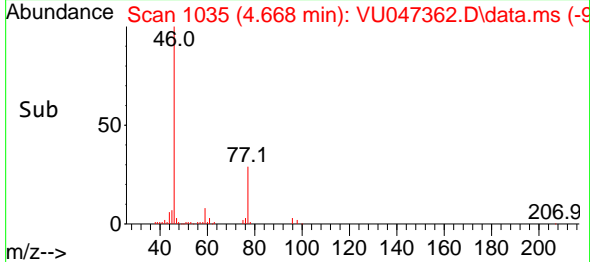
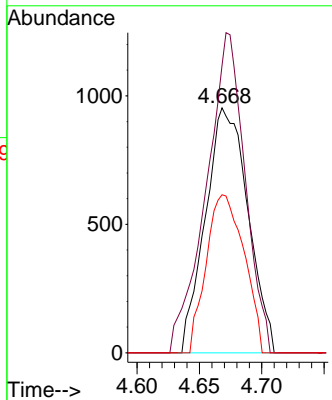
#22
 cis-1,2-Dichloroethene
 Concen: 0.190 ug/L
 RT: 4.668 min Scan# 1035
 Delta R.T. -0.003 min
 Lab File: VU047362.D
 Acq: 07 Mar 2022 13:10

Instrument : MSVOA_U
 ClientSampleId : VIBLK008



Tgt Ion: 96 Resp: 2264

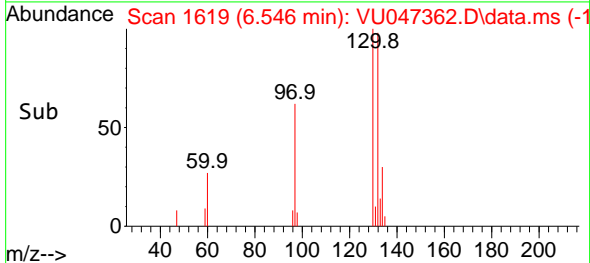
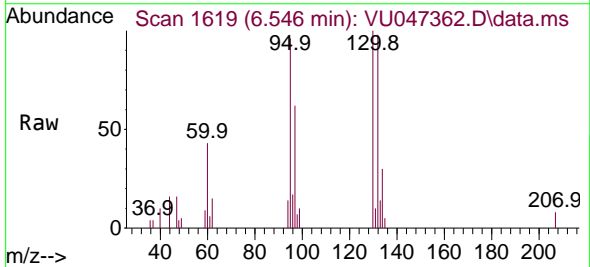
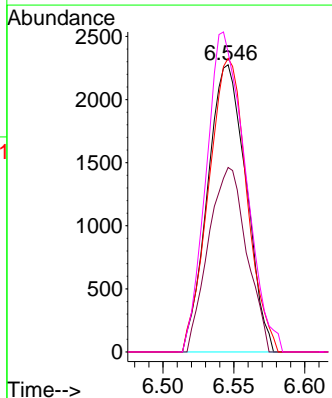
Ion	Ratio	Lower	Upper
96	100		
61	117.4	88.5	164.3
98	64.5	44.4	82.5

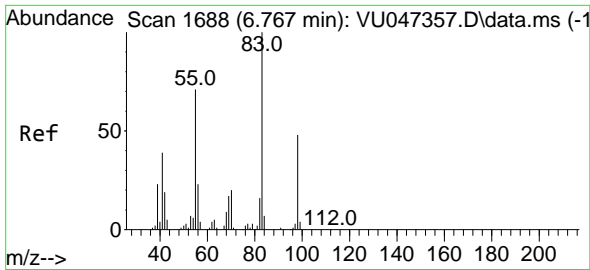


#34
 Trichloroethene
 Concen: 0.375 ug/L
 RT: 6.546 min Scan# 1619
 Delta R.T. 0.000 min
 Lab File: VU047362.D
 Acq: 07 Mar 2022 13:10

Tgt Ion: 95 Resp: 4298

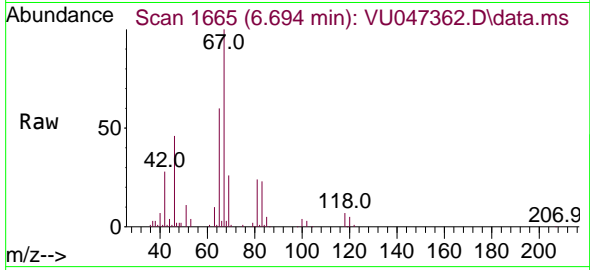
Ion	Ratio	Lower	Upper
95	100		
97	64.2	46.5	86.5
132	102.2	65.1	120.9
130	104.3	67.3	124.9



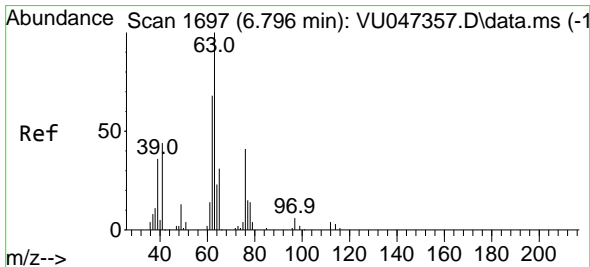
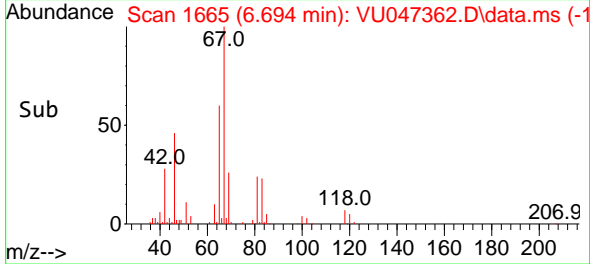
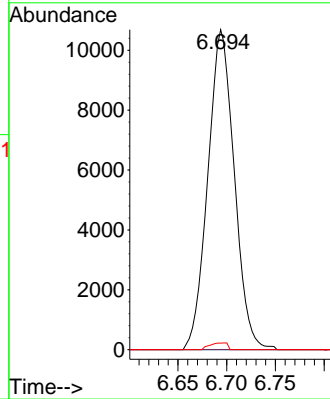


#35
 Methylcyclohexane
 Concen: 1.150 ug/L
 RT: 6.694 min Scan# 1665
 Delta R.T. -0.074 min
 Lab File: VU047362.D
 Acq: 07 Mar 2022 13:10

Instrument : MSVOA_U
 ClientSampleId : VIBLK008

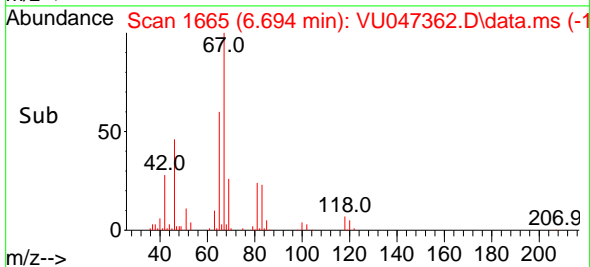
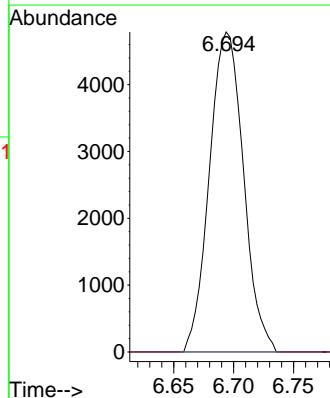
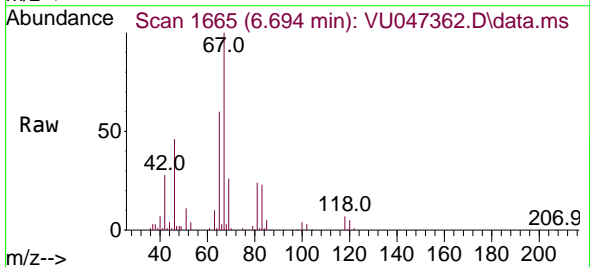


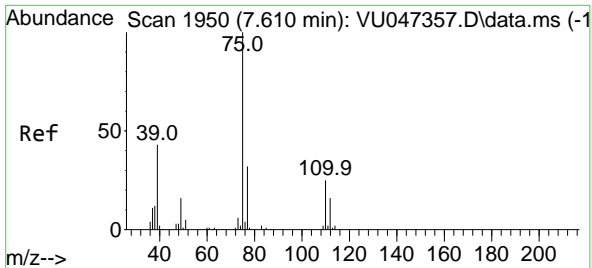
Tgt Ion: 83 Resp: 20203
 Ion Ratio Lower Upper
 83 100
 55 0.0 61.9 92.9#
 98 1.4 39.0 58.6#



#37
 1,2-Dichloropropane
 Concen: 0.875 ug/L
 RT: 6.694 min Scan# 1665
 Delta R.T. -0.099 min
 Lab File: VU047362.D
 Acq: 07 Mar 2022 13:10

Tgt Ion: 63 Resp: 9455
 Ion Ratio Lower Upper
 63 100
 112 0.0 3.2 4.8#

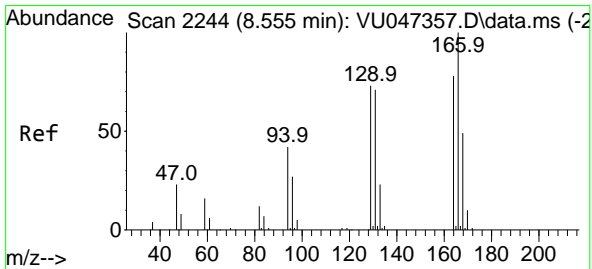
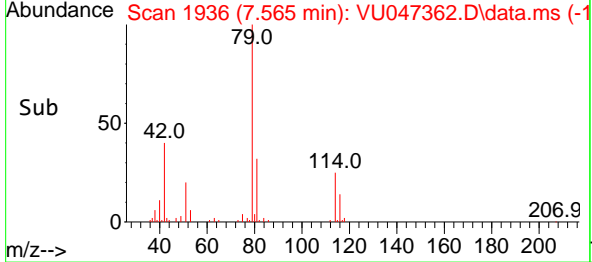
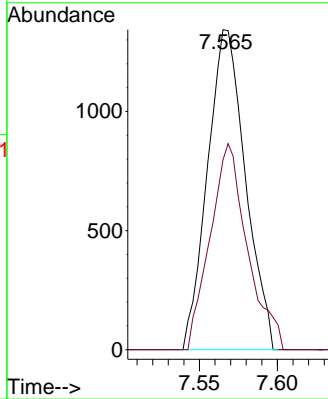
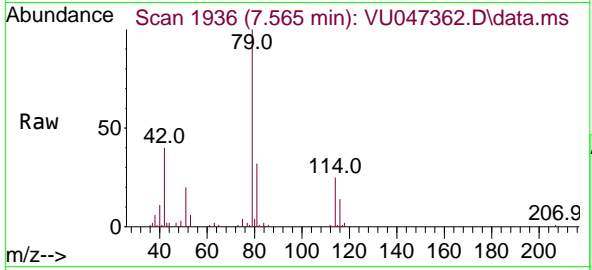




#39
 cis-1,3-Dichloropropene
 Concen: 0.132 ug/L
 RT: 7.565 min Scan# 1950
 Delta R.T. -0.045 min
 Lab File: VU047362.D
 Acq: 07 Mar 2022 13:10

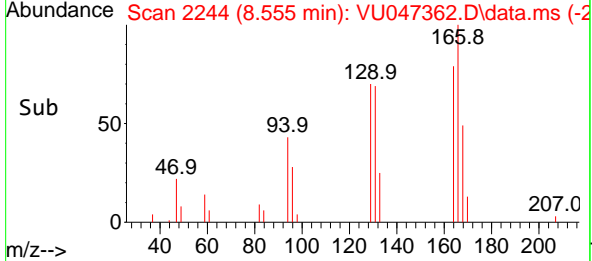
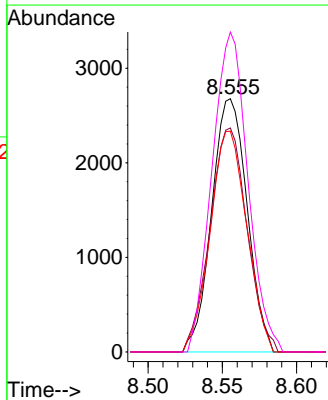
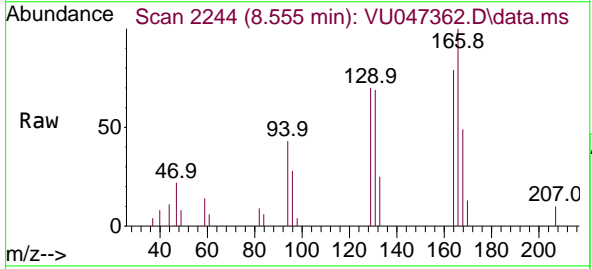
Instrument : MSVOA_U
 ClientSampleId : VIBLK008

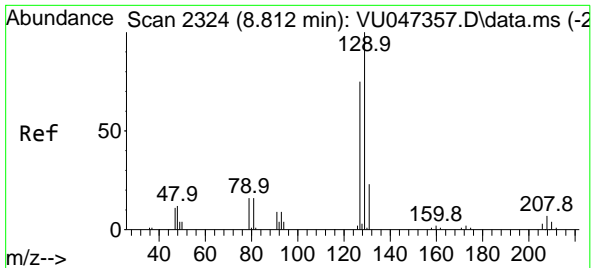
Tgt Ion: 75 Resp: 2270
 Ion Ratio Lower Upper
 75 100
 77 59.3 22.5 41.9#



#47
 Tetrachloroethene
 Concen: 0.455 ug/L
 RT: 8.555 min Scan# 2244
 Delta R.T. 0.000 min
 Lab File: VU047362.D
 Acq: 07 Mar 2022 13:10

Tgt Ion:164 Resp: 4444
 Ion Ratio Lower Upper
 164 100
 129 88.4 71.8 133.4
 131 87.2 68.5 127.3
 166 126.3 94.1 174.8

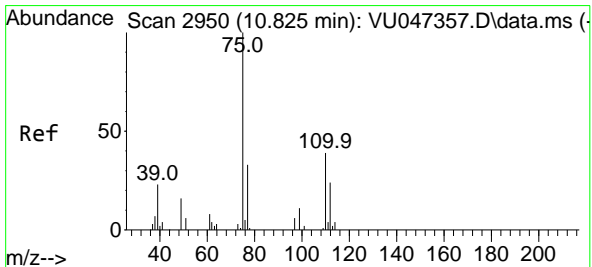
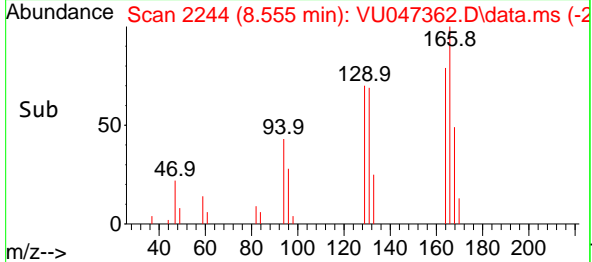
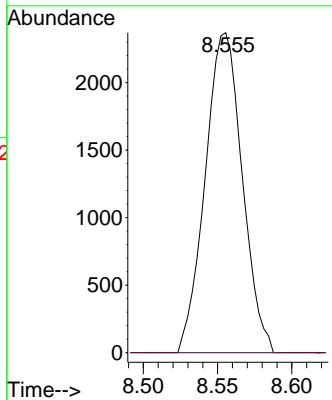
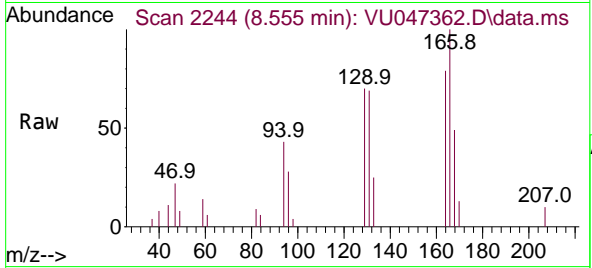




#49
 Dibromochloromethane
 Concen: 0.374 ug/L
 RT: 8.555 min Scan# 2111
 Delta R.T. -0.257 min
 Lab File: VU047362.D
 Acq: 07 Mar 2022 13:10

Instrument : MSVOA_U
 ClientSampleId : VIBLK008

Tgt Ion:129 Resp: 4112
 Ion Ratio Lower Upper
 129 100
 127 0.0 55.4 102.8#



#61
 1,2,3-Trichloropropane
 Concen: 1.248 ug/L
 RT: 11.813 min Scan# 3257
 Delta R.T. 0.987 min
 Lab File: VU047362.D
 Acq: 07 Mar 2022 13:10

Tgt Ion: 75 Resp: 11086
 Ion Ratio Lower Upper
 75 100
 110 2.1 29.9 44.9#
 77 30.7 25.5 38.3

