

Data Path : Z:\voasrv\HPCHEM1\MSVOA\_U\Data\VU030922\  
 Data File : VU047435.D  
 Acq On : 10 Mar 2022 04:55  
 Operator : SY/MD  
 Sample : N1857-05  
 Misc : 25.0mL/MSVOA\_U/WATER  
 ALS Vial : 40 Sample Multiplier: 1

Instrument :  
 MSVOA\_U  
 ClientSampleId :  
 ETNH3

Quant Time: Mar 10 06:33:50 2022  
 Quant Method : Z:\voasrv\HPCHEM1\MSVOA\_U\Method\SFAMUTR030922WMA.M  
 Quant Title : TRACE VOA SFAM1.0  
 QLast Update : Thu Mar 10 03:57:44 2022  
 Response via : Initial Calibration

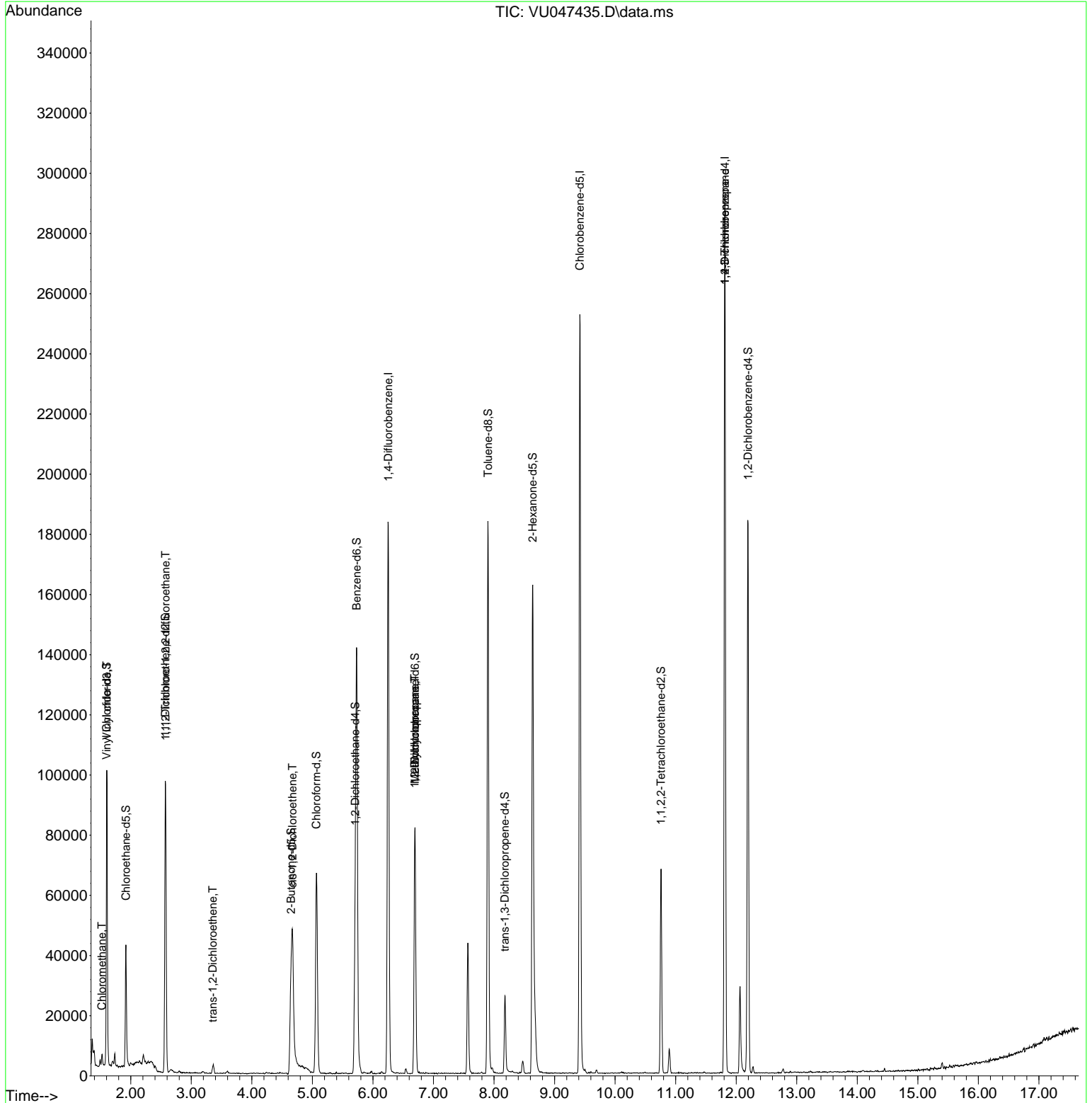
Compound	R.T.	QIon	Response	Conc	Units	Dev(Min)
-----						
Internal Standards						
1) 1,4-Difluorobenzene	6.253	114	160138	5.000	ug/L	0.00
28) Chlorobenzene-d5	9.417	117	150583	5.000	ug/L	0.00
58) 1,4-Dichlorobenzene-d4	11.813	152	81785	5.000	ug/L	0.00
System Monitoring Compounds						
4) Vinyl Chloride-d3	1.601	65	40327	4.643	ug/L	0.00
Spiked Amount	5.000	Range 40 - 130	Recovery	=	92.800%	
7) Chloroethane-d5	1.919	69	30067	4.716	ug/L	0.00
Spiked Amount	5.000	Range 65 - 130	Recovery	=	94.400%	
11) 1,1-Dichloroethene-d2	2.572	65	17353	4.524	ug/L	0.00
Spiked Amount	5.000	Range 60 - 125	Recovery	=	90.400%	
20) 2-Butanone-d5	4.649	46	65752	42.522	ug/L	0.00
Spiked Amount	50.000	Range 40 - 130	Recovery	=	85.040%	
24) Chloroform-d	5.067	84	63056	4.557	ug/L	0.00
Spiked Amount	5.000	Range 70 - 125	Recovery	=	91.200%	
26) 1,2-Dichloroethane-d4	5.707	65	33894	4.837	ug/L	0.00
Spiked Amount	5.000	Range 70 - 130	Recovery	=	96.800%	
32) Benzene-d6	5.732	84	137056	4.839	ug/L	0.00
Spiked Amount	5.000	Range 70 - 125	Recovery	=	96.800%	
36) 1,2-Dichloropropane-d6	6.694	67	40200	4.797	ug/L	0.00
Spiked Amount	5.000	Range 60 - 140	Recovery	=	96.000%	
41) Toluene-d8	7.900	98	129370	4.647	ug/L	0.00
Spiked Amount	5.000	Range 70 - 130	Recovery	=	93.000%	
43) trans-1,3-Dichloroprop...	8.179	79	15674	4.406	ug/L	0.00
Spiked Amount	5.000	Range 55 - 130	Recovery	=	88.200%	
46) 2-Hexanone-d5	8.636	63	70623	45.063	ug/L	0.00
Spiked Amount	50.000	Range 45 - 130	Recovery	=	90.120%	
56) 1,1,2,2-Tetrachloroeth...	10.758	84	33169	4.542	ug/L	0.00
Spiked Amount	5.000	Range 65 - 120	Recovery	=	90.800%	
66) 1,2-Dichlorobenzene-d4	12.195	152	51057	4.924	ug/L	0.00
Spiked Amount	5.000	Range 80 - 120	Recovery	=	98.400%	
-----						
Target Compounds						Qvalue
3) Chloromethane	1.524	50	2748	0.230	ug/L	95
5) Vinyl chloride	1.607	62	32550	2.764	ug/L	99
10) 1,1,2-Trichloro-1,2,2-...	2.575	101	471	0.049	ug/L #	17
18) trans-1,2-Dichloroethene	3.356	96	1367	0.136	ug/L	86
22) cis-1,2-Dichloroethene	4.671	96	16073	1.441	ug/L	97
35) Methylcyclohexane	6.694	83	9509	0.554	ug/L #	20
37) 1,2-Dichloropropane	6.691	63	4100	0.405	ug/L #	88
61) 1,2,3-Trichloropropane	11.813	75	8475	1.119	ug/L #	67
-----						

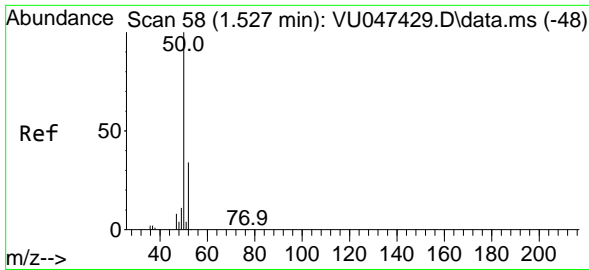
(#) = qualifier out of range (m) = manual integration (+) = signals summed

Data Path : Z:\voasrv\HPCHEM1\MSVOA\_U\Data\VU030922\  
 Data File : VU047435.D  
 Acq On : 10 Mar 2022 04:55  
 Operator : SY/MD  
 Sample : N1857-05  
 Misc : 25.0mL/MSVOA\_U/WATER  
 ALS Vial : 40 Sample Multiplier: 1

Instrument :  
 MSVOA\_U  
 ClientSampleId :  
 ETNH3

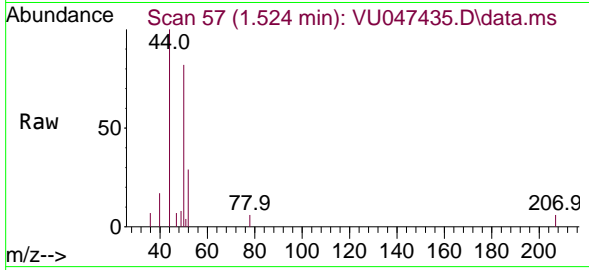
Quant Time: Mar 10 06:33:50 2022  
 Quant Method : Z:\voasrv\HPCHEM1\MSVOA\_U\Method\SFAMUTR030922WMA.M  
 Quant Title : TRACE VOA SFAM1.0  
 QLast Update : Thu Mar 10 03:57:44 2022  
 Response via : Initial Calibration



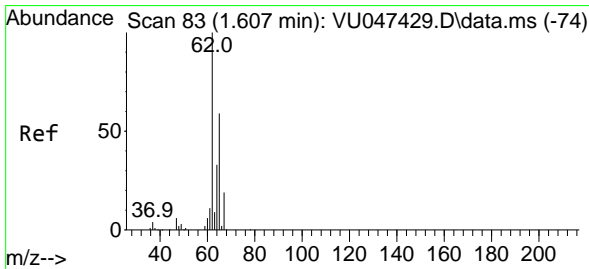
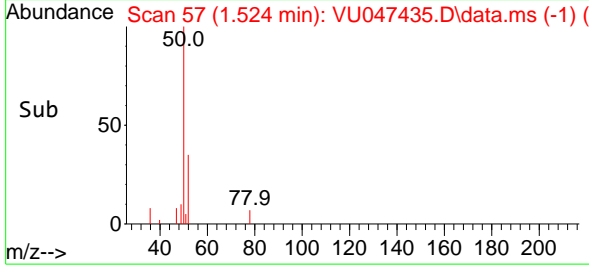
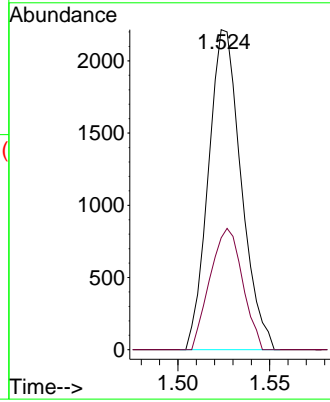


#3  
 Chloromethane  
 Concen: 0.230 ug/L  
 RT: 1.524 min Scan# 51  
 Delta R.T. -0.003 min  
 Lab File: VU047435.D  
 Acq: 10 Mar 2022 04:55

Instrument :  
 MSVOA\_U  
 ClientSampleId :  
 ETNH3

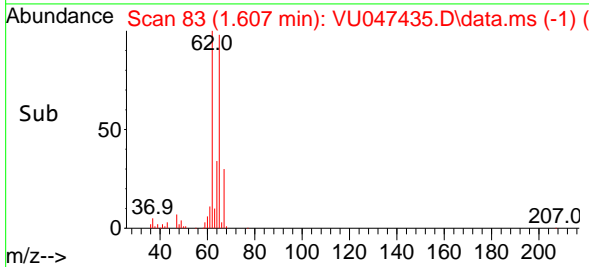
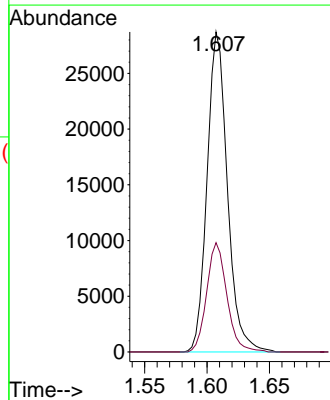
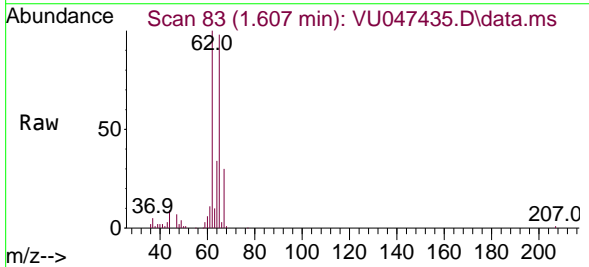


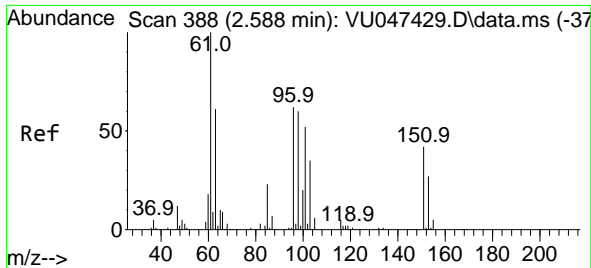
Tgt Ion: 50 Resp: 2748  
 Ion Ratio Lower Upper  
 50 100  
 52 35.0 22.5 41.9



#5  
 Vinyl chloride  
 Concen: 2.764 ug/L  
 RT: 1.607 min Scan# 83  
 Delta R.T. 0.000 min  
 Lab File: VU047435.D  
 Acq: 10 Mar 2022 04:55

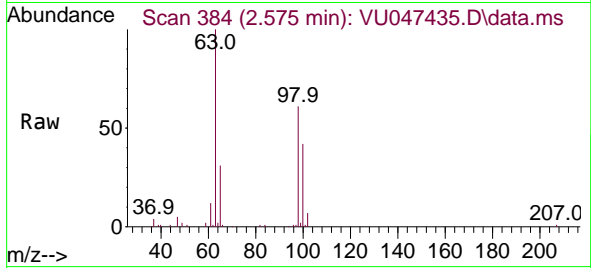
Tgt Ion: 62 Resp: 32550  
 Ion Ratio Lower Upper  
 62 100  
 64 34.2 23.7 43.9



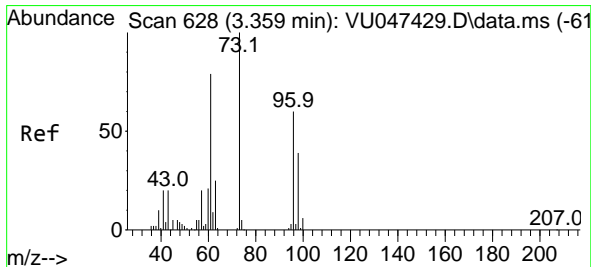
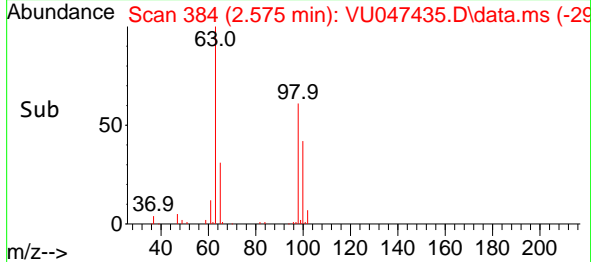
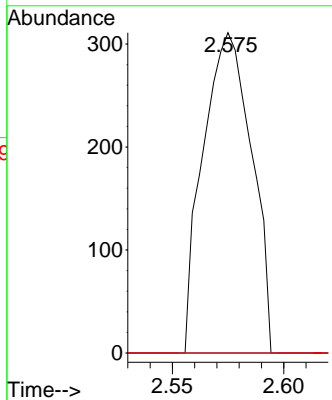


#10  
 1,1,2-Trichloro-1,2,2-trifluoroethane  
 Concen: 0.049 ug/L  
 RT: 2.575 min Scan# 311  
 Delta R.T. -0.013 min  
 Lab File: VU047435.D  
 Acq: 10 Mar 2022 04:55

Instrument : MSVOA\_U  
 ClientSampleId : ETNH3

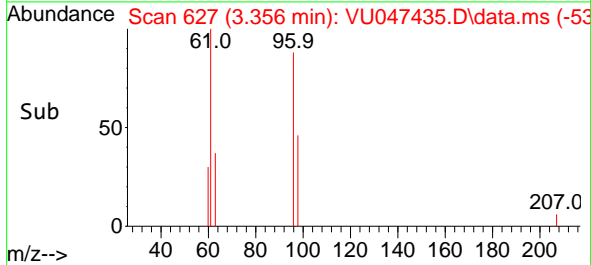
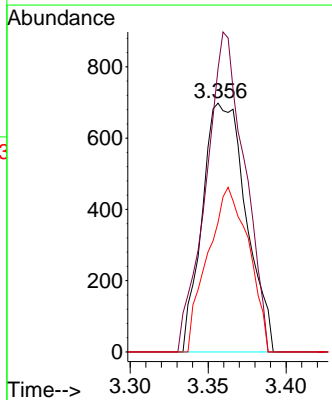
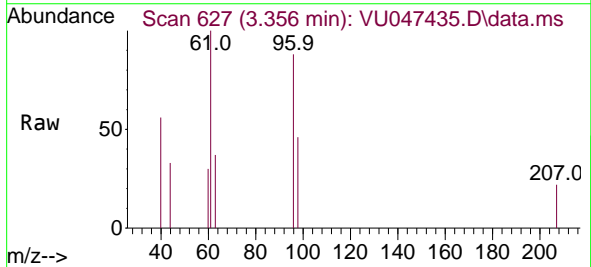


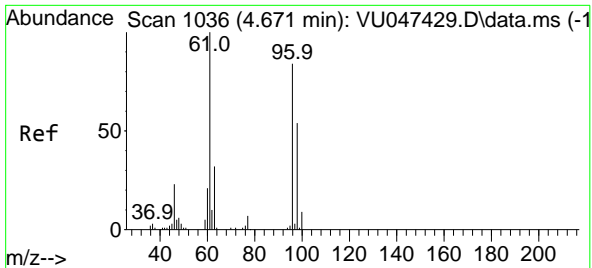
Tgt Ion	Resp	Lower	Upper
101	100		
85	0.0	33.8	50.6#
151	0.0	64.8	97.2#



#18  
 trans-1,2-Dichloroethene  
 Concen: 0.136 ug/L  
 RT: 3.356 min Scan# 627  
 Delta R.T. -0.003 min  
 Lab File: VU047435.D  
 Acq: 10 Mar 2022 04:55

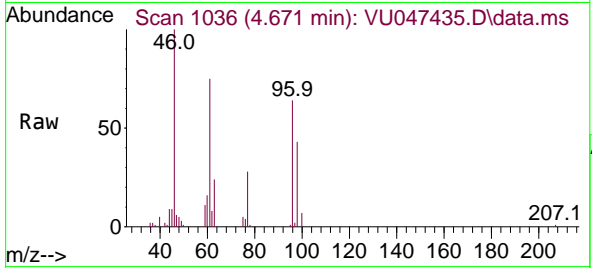
Tgt Ion	Resp	Lower	Upper
96	100		
61	113.9	90.4	167.8
98	52.0	45.0	83.6





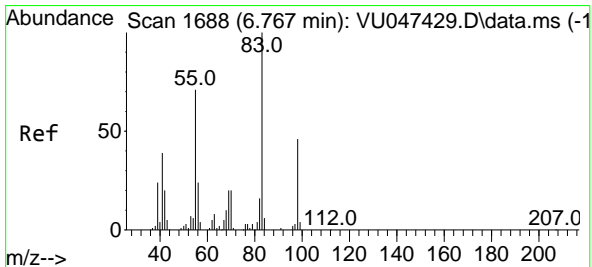
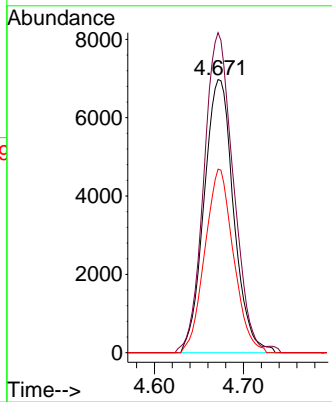
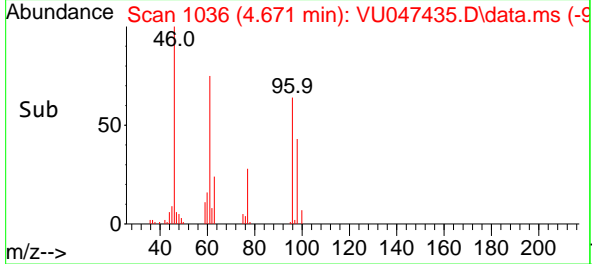
#22  
 cis-1,2-Dichloroethene  
 Concen: 1.441 ug/L  
 RT: 4.671 min Scan# 1036  
 Delta R.T. 0.000 min  
 Lab File: VU047435.D  
 Acq: 10 Mar 2022 04:55

Instrument : MSVOA\_U  
 ClientSampleId : ETNH3

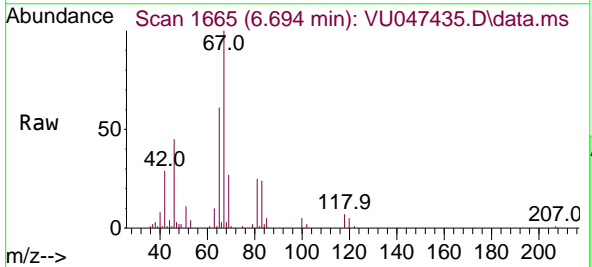


Tgt Ion: 96 Resp: 16073

Ion	Ratio	Lower	Upper
96	100		
61	117.1	80.8	150.0
98	67.2	44.7	83.1

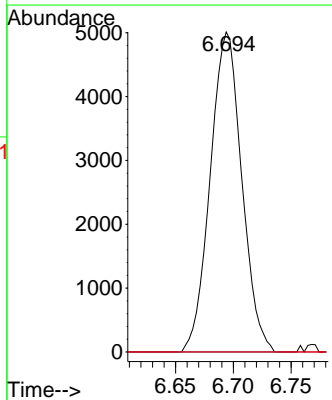
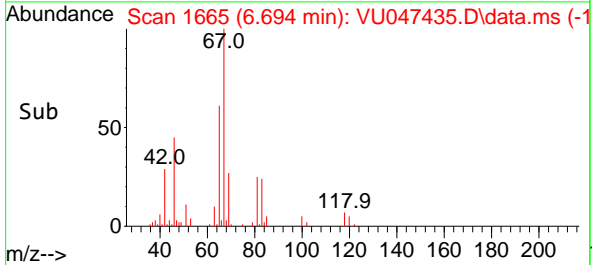


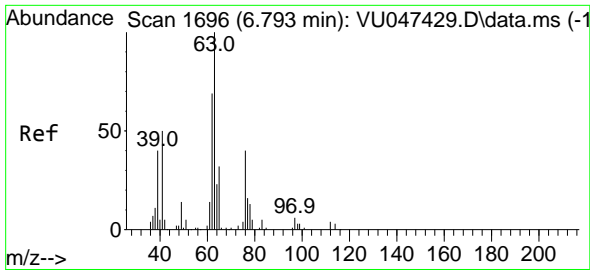
#35  
 Methylcyclohexane  
 Concen: 0.554 ug/L  
 RT: 6.694 min Scan# 1665  
 Delta R.T. -0.074 min  
 Lab File: VU047435.D  
 Acq: 10 Mar 2022 04:55



Tgt Ion: 83 Resp: 9509

Ion	Ratio	Lower	Upper
83	100		
55	0.0	57.8	86.8#
98	0.0	38.0	57.0#

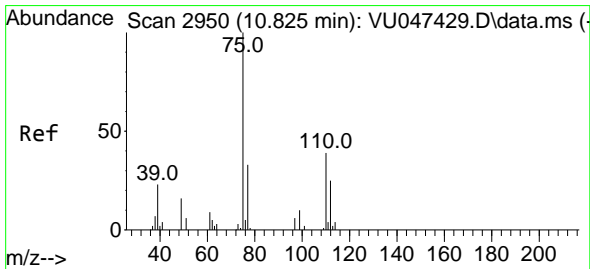
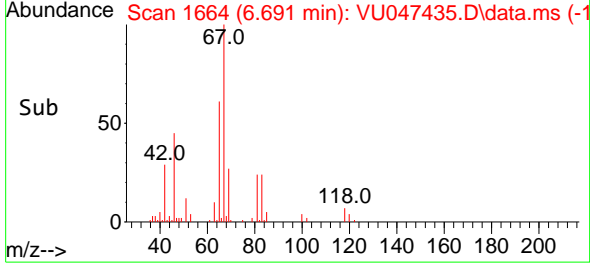
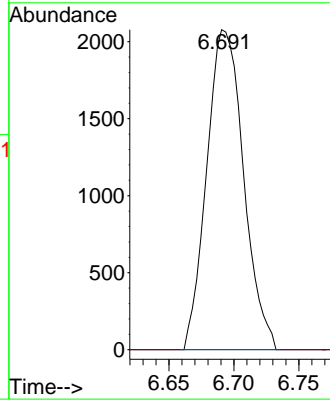
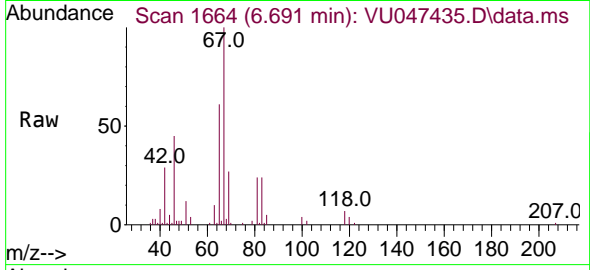




#37  
 1,2-Dichloropropane  
 Concen: 0.405 ug/L  
 RT: 6.691 min Scan# 1111  
 Delta R.T. -0.103 min  
 Lab File: VU047435.D  
 Acq: 10 Mar 2022 04:55

Instrument : MSVOA\_U  
 ClientSampleId : ETNH3

Tgt Ion: 63 Resp: 4100  
 Ion Ratio Lower Upper  
 63 100  
 112 0.0 3.3 4.9#



#61  
 1,2,3-Trichloropropane  
 Concen: 1.119 ug/L  
 RT: 11.813 min Scan# 3257  
 Delta R.T. 0.987 min  
 Lab File: VU047435.D  
 Acq: 10 Mar 2022 04:55

Tgt Ion: 75 Resp: 8475  
 Ion Ratio Lower Upper  
 75 100  
 110 2.0 31.0 46.4#  
 77 33.3 26.2 39.4

