

Data Path : Z:\voasrv\HPCHEM1\MSVOA_U\Data\VU031022\
 Data File : VU047471.D
 Acq On : 10 Mar 2022 20:23
 Operator : SY/MD
 Sample : N1861-05DL 10X
 Misc : 25.0mL/MSVOA_U/WATER
 ALS Vial : 21 Sample Multiplier: 1

Instrument :
 MSVOA_U
 ClientSampleId :
 YATL9DL

Quant Time: Mar 11 00:58:06 2022
 Quant Method : Z:\voasrv\HPCHEM1\MSVOA_U\Method\SFAMUTR030922WMA.M
 Quant Title : TRACE VOA SFAM1.0
 QLast Update : Fri Mar 11 00:52:41 2022
 Response via : Initial Calibration

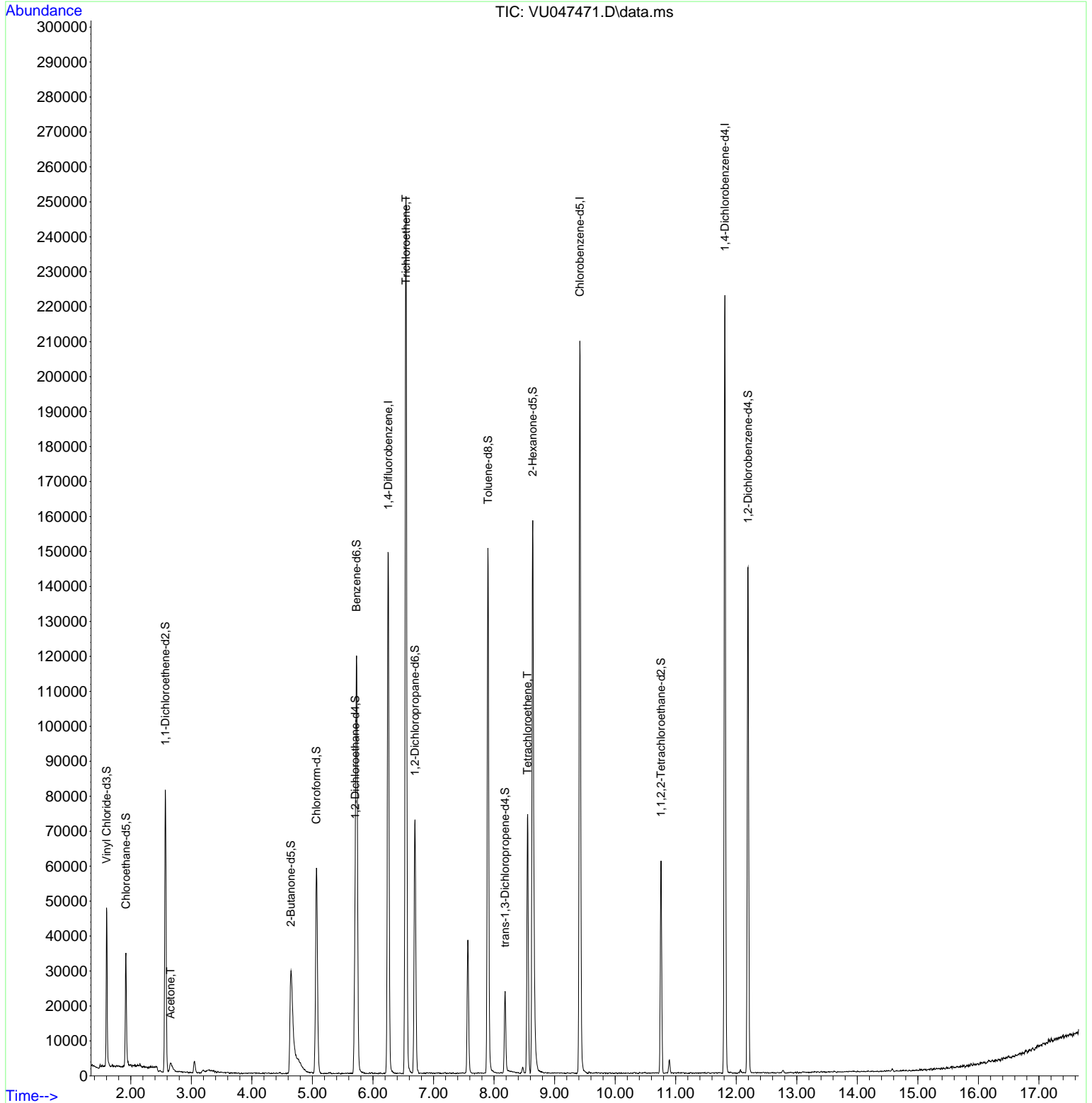
| Compound | R.T. | QIon | Response | Conc | Units | Dev(Min) |
|-------------------------------|--------|----------------|----------|--------|----------|----------|
| ----- | | | | | | |
| Internal Standards | | | | | | |
| 1) 1,4-Difluorobenzene | 6.253 | 114 | 126572 | 5.000 | ug/L | 0.00 |
| 28) Chlorobenzene-d5 | 9.417 | 117 | 123852 | 5.000 | ug/L | 0.00 |
| 58) 1,4-Dichlorobenzene-d4 | 11.812 | 152 | 62877 | 5.000 | ug/L | 0.00 |
| System Monitoring Compounds | | | | | | |
| 4) Vinyl Chloride-d3 | 1.601 | 65 | 33043 | 4.813 | ug/L | 0.00 |
| Spiked Amount | 5.000 | Range 40 - 130 | Recovery | = | 96.200% | |
| 7) Chloroethane-d5 | 1.919 | 69 | 25116 | 4.984 | ug/L | 0.00 |
| Spiked Amount | 5.000 | Range 65 - 130 | Recovery | = | 99.600% | |
| 11) 1,1-Dichloroethene-d2 | 2.572 | 65 | 15124 | 4.988 | ug/L | 0.00 |
| Spiked Amount | 5.000 | Range 60 - 125 | Recovery | = | 99.800% | |
| 20) 2-Butanone-d5 | 4.645 | 46 | 66510 | 54.419 | ug/L | 0.00 |
| Spiked Amount | 50.000 | Range 40 - 130 | Recovery | = | 108.840% | |
| 24) Chloroform-d | 5.067 | 84 | 55285 | 5.055 | ug/L | 0.00 |
| Spiked Amount | 5.000 | Range 70 - 125 | Recovery | = | 101.200% | |
| 26) 1,2-Dichloroethane-d4 | 5.707 | 65 | 29655 | 5.355 | ug/L | 0.00 |
| Spiked Amount | 5.000 | Range 70 - 130 | Recovery | = | 107.000% | |
| 32) Benzene-d6 | 5.729 | 84 | 116029 | 4.980 | ug/L | 0.00 |
| Spiked Amount | 5.000 | Range 70 - 125 | Recovery | = | 99.600% | |
| 36) 1,2-Dichloropropane-d6 | 6.694 | 67 | 35410 | 5.138 | ug/L | 0.00 |
| Spiked Amount | 5.000 | Range 60 - 140 | Recovery | = | 102.800% | |
| 41) Toluene-d8 | 7.899 | 98 | 104931 | 4.582 | ug/L | 0.00 |
| Spiked Amount | 5.000 | Range 70 - 130 | Recovery | = | 91.600% | |
| 43) trans-1,3-Dichloroprop... | 8.182 | 79 | 13435 | 4.591 | ug/L | 0.00 |
| Spiked Amount | 5.000 | Range 55 - 130 | Recovery | = | 91.800% | |
| 46) 2-Hexanone-d5 | 8.639 | 63 | 65804 | 51.050 | ug/L | 0.00 |
| Spiked Amount | 50.000 | Range 45 - 130 | Recovery | = | 102.100% | |
| 56) 1,1,2,2-Tetrachloroeth... | 10.758 | 84 | 29548 | 4.920 | ug/L | 0.00 |
| Spiked Amount | 5.000 | Range 65 - 120 | Recovery | = | 98.400% | |
| 66) 1,2-Dichlorobenzene-d4 | 12.195 | 152 | 41268 | 5.177 | ug/L | 0.00 |
| Spiked Amount | 5.000 | Range 80 - 120 | Recovery | = | 103.600% | |
| Target Compounds | | | | | | |
| 13) Acetone | 2.658 | 43 | 5692 | 5.069 | ug/L | 98 |
| 34) Trichloroethene | 6.546 | 95 | 84435 | 9.443 | ug/L | 98 |
| 47) Tetrachloroethene | 8.552 | 164 | 17297 | 2.280 | ug/L | 96 |
| ----- | | | | | | |

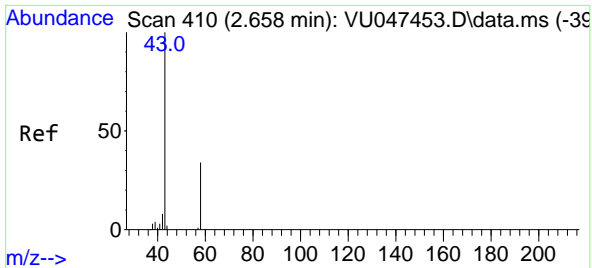
(#) = qualifier out of range (m) = manual integration (+) = signals summed

Data Path : Z:\voasrv\HPCHEM1\MSVOA_U\Data\VU031022\
 Data File : VU047471.D
 Acq On : 10 Mar 2022 20:23
 Operator : SY/MD
 Sample : N1861-05DL 10X
 Misc : 25.0mL/MSVOA_U/WATER
 ALS Vial : 21 Sample Multiplier: 1

Instrument :
 MSVOA_U
 ClientSampleId :
 YATL9DL

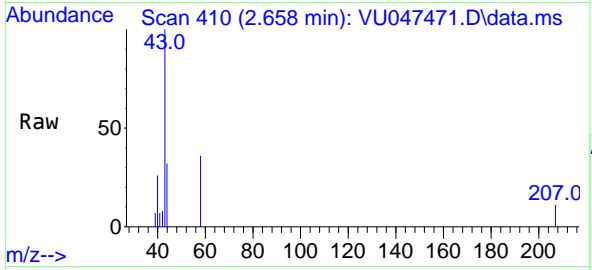
Quant Time: Mar 11 00:58:06 2022
 Quant Method : Z:\voasrv\HPCHEM1\MSVOA_U\Method\SFAMUTR030922WMA.M
 Quant Title : TRACE VOA SFAM1.0
 QLast Update : Fri Mar 11 00:52:41 2022
 Response via : Initial Calibration



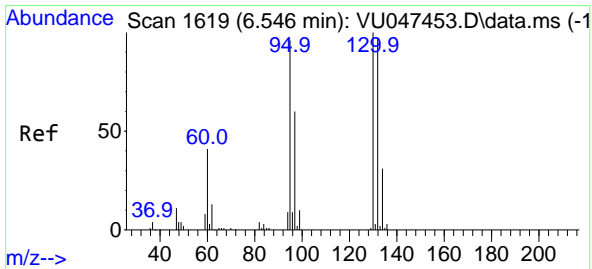
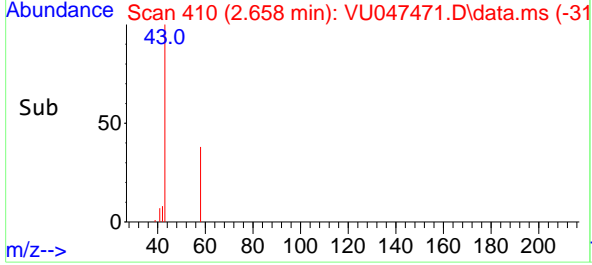
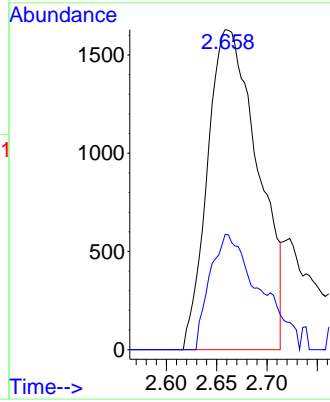


#13
 Acetone
 Concen: 5.069 ug/L
 RT: 2.658 min Scan# 410
 Delta R.T. 0.000 min
 Lab File: VU047471.D
 Acq: 10 Mar 2022 20:23

Instrument : MSVOA_U
 ClientSampleId : YATL9DL

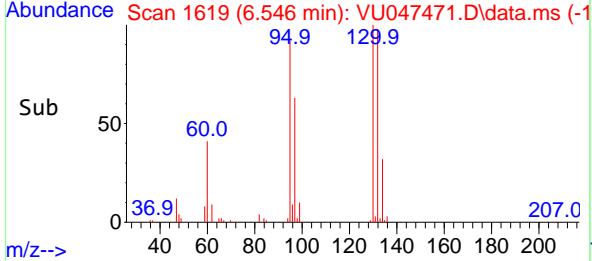
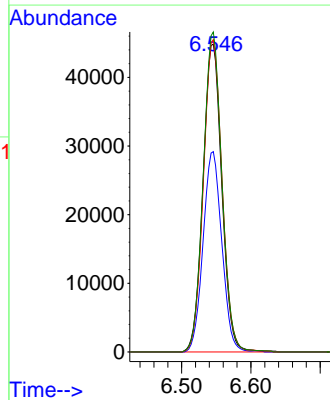
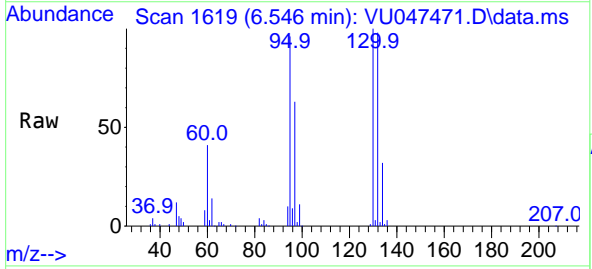


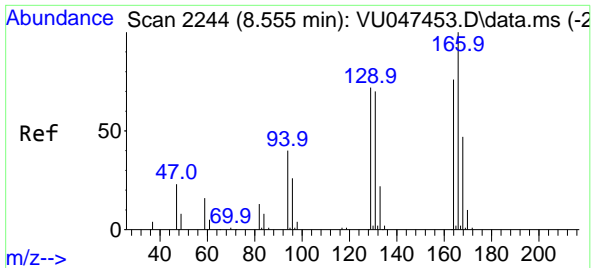
Tgt Ion: 43 Resp: 5692
 Ion Ratio Lower Upper
 43 100
 58 35.3 0.0 72.6



#34
 Trichloroethene
 Concen: 9.443 ug/L
 RT: 6.546 min Scan# 1619
 Delta R.T. 0.000 min
 Lab File: VU047471.D
 Acq: 10 Mar 2022 20:23

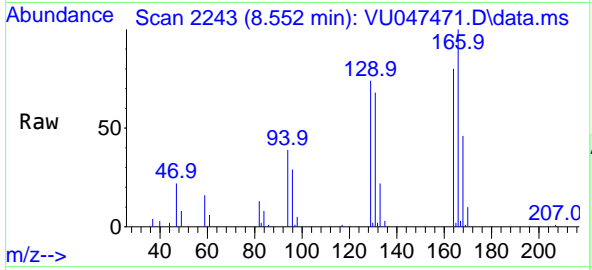
Tgt Ion: 95 Resp: 84435
 Ion Ratio Lower Upper
 95 100
 97 65.1 46.3 85.9
 132 101.4 71.7 133.1
 130 103.9 75.0 139.2





#47
 Tetrachloroethene
 Concen: 2.280 ug/L
 RT: 8.552 min Scan# 21
 Delta R.T. -0.003 min
 Lab File: VU047471.D
 Acq: 10 Mar 2022 20:23

Instrument : MSVOA_U
 ClientSampleId : YATL9DL



Tgt Ion:164 Resp: 17297

| Ion | Ratio | Lower | Upper |
|-----|-------|-------|-------|
| 164 | 100 | | |
| 129 | 92.4 | 64.9 | 120.5 |
| 131 | 85.4 | 63.6 | 118.2 |
| 166 | 125.0 | 91.4 | 169.8 |

