

Data Path : Z:\voasrv\HPCHEM1\MSVOA\_U\Data\VU031022\  
 Data File : VU047472.D  
 Acq On : 10 Mar 2022 20:47  
 Operator : SY/MD  
 Sample : N1861-06DL 5X  
 Misc : 25.0mL/MSVOA\_U/WATER  
 ALS Vial : 22 Sample Multiplier: 1

Instrument :  
 MSVOA\_U  
 ClientSampleId :  
 YATMODL

Integration Parameters: rteint.p  
 Integrator: RTE  
 Smoothing : ON                   Filtering: 5  
 Sampling : 1                   Min Area: 3 % of largest Peak  
 Start Thrs: 0.1               Max Peaks: 100  
 Stop Thrs : 0               Peak Location: TOP

If leading or trailing edge < 100 prefer < Baseline drop else tangent >  
 Peak separation: 5

Method : Z:\voasrv\HPCHEM1\MSVOA\_U\Method\SFAMUTR030922WMA.M  
 Title : TRACE VOA SFAM1.0

Signal : TIC: VU047472.D\data.ms

peak #	R.T. min	first scan	max scan	last scan	PK TY	peak height	corr. area	corr. % max.	% of total
1	1.600	73	81	95	rVB	47880	55771	16.18%	1.638%
2	1.919	171	180	193	rBV	35430	48080	13.95%	1.412%
3	2.571	370	383	400	rBV	85941	140533	40.76%	4.127%
4	3.054	524	533	543	rVB4	3724	6931	2.01%	0.204%
5	4.648	1014	1029	1058	rBV	28319	106051	30.76%	3.114%
6	5.066	1141	1159	1179	rVB	61541	136658	39.64%	4.013%
7	5.729	1344	1365	1389	rBV2	125135	321193	93.16%	9.432%
8	6.250	1511	1527	1551	rBV	147904	279236	80.99%	8.200%
9	6.545	1606	1619	1636	rBV	169349	316044	91.67%	9.281%
10	6.693	1650	1665	1686	rBV	74649	145296	42.14%	4.267%
11	7.568	1926	1937	1953	rBV	40046	69241	20.08%	2.033%
12	7.899	2027	2040	2059	rBV	157016	275175	79.81%	8.081%
13	8.182	2117	2128	2142	rBV2	24084	41967	12.17%	1.232%
14	8.555	2232	2244	2258	rBV	60975	101295	29.38%	2.975%
15	8.639	2258	2270	2296	rBV	153510	321730	93.32%	9.448%
16	9.417	2500	2512	2532	rBV	201783	339361	98.43%	9.966%
17	10.758	2917	2929	2944	rBV	62392	99582	28.88%	2.924%
18	10.893	2962	2971	2982	rBV2	3679	5651	1.64%	0.166%
19	11.812	3243	3257	3276	rBV	220839	344770	100.00%	10.125%
20	12.195	3361	3376	3396	rBV	154200	250663	72.70%	7.361%

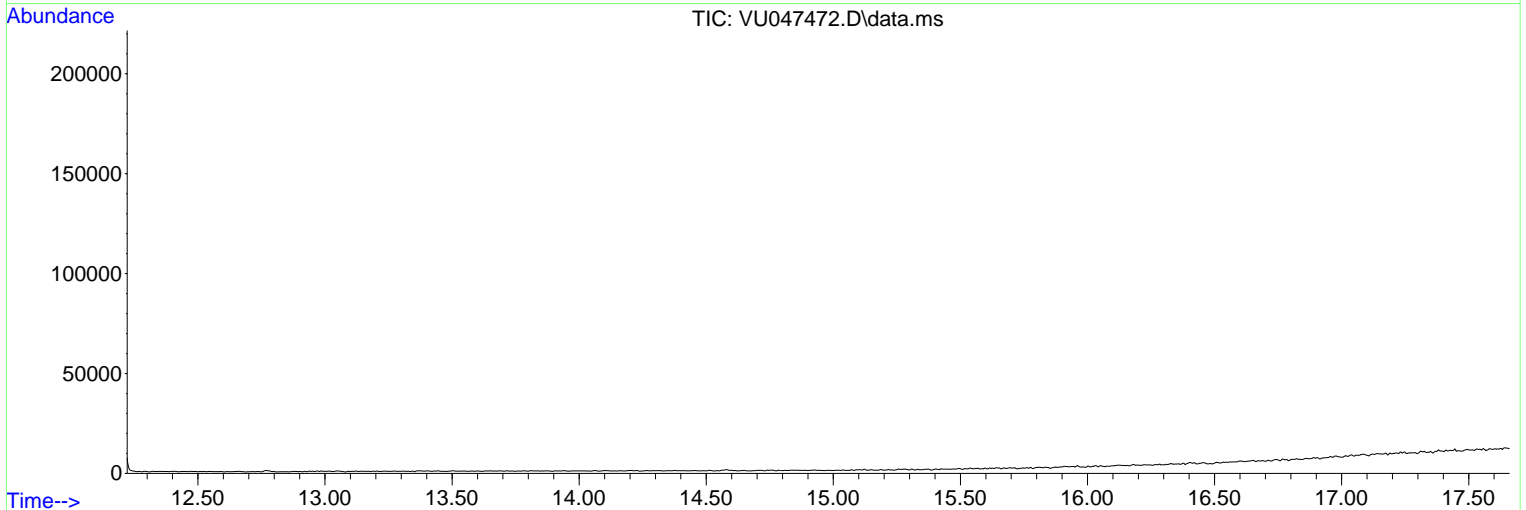
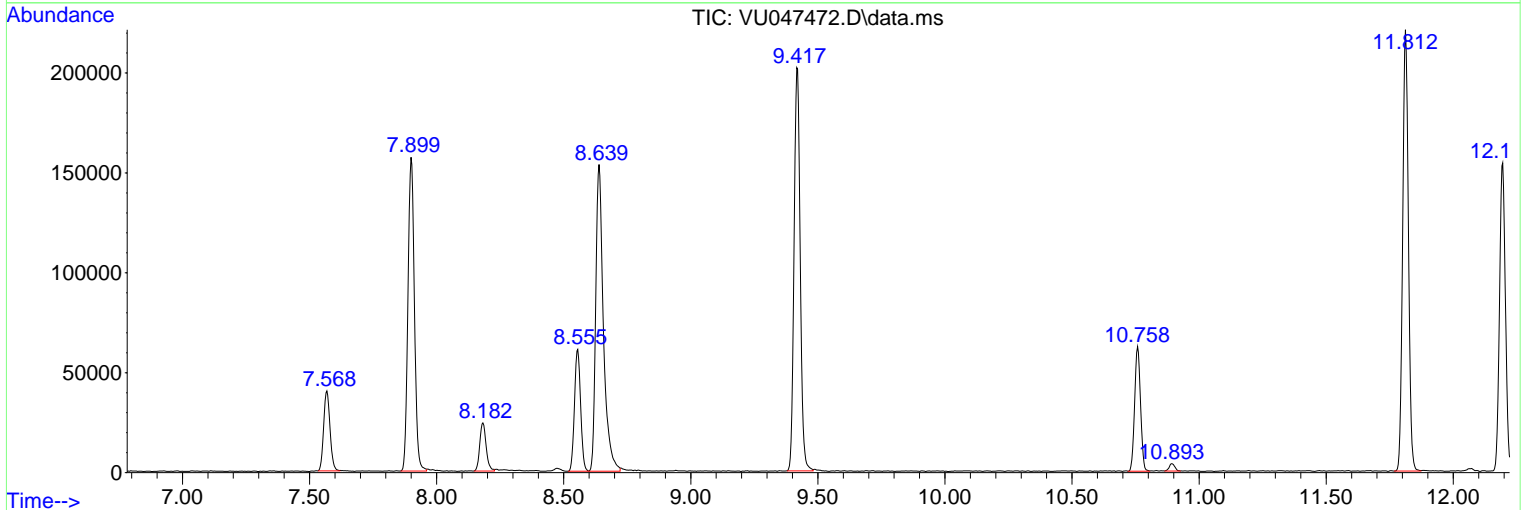
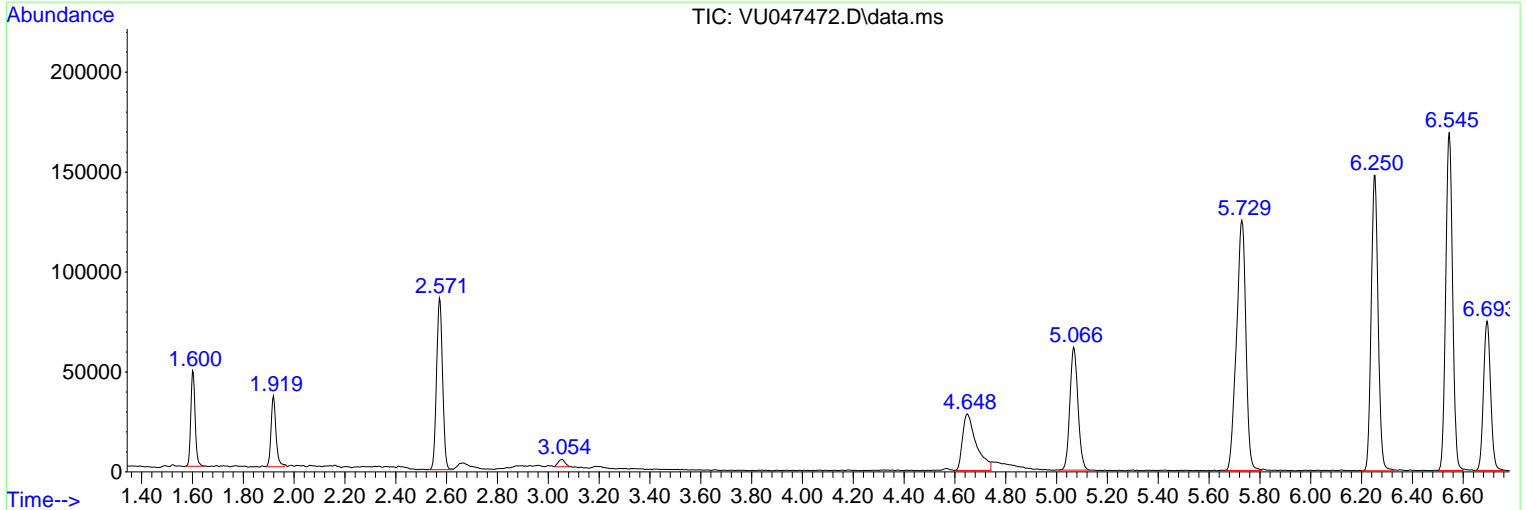
Sum of corrected areas: 3405228

Data Path : Z:\voasrv\HPCHEM1\MSVOA\_U\Data\VU031022\  
 Data File : VU047472.D  
 Acq On : 10 Mar 2022 20:47  
 Operator : SY/MD  
 Sample : N1861-06DL 5X  
 Misc : 25.0mL/MSVOA\_U/WATER  
 ALS Vial : 22 Sample Multiplier: 1

Instrument :  
 MSVOA\_U  
 ClientSampleId :  
 YATMODL

Quant Method : Z:\voasrv\HPCHEM1\MSVOA\_U\Method\SFAMUTR030922WMA.M  
 Quant Title : TRACE VOA SFAM1.0

TIC Library : C:\Database\NIST20.L  
 TIC Integration Parameters: LSCINT.P



Library Search Compound Report

Data Path : Z:\voasrv\HPCHEM1\MSVOA\_U\Data\VU031022\  
Data File : VU047472.D  
Acq On : 10 Mar 2022 20:47  
Operator : SY/MD  
Sample : N1861-06DL 5X  
Misc : 25.0mL/MSVOA\_U/WATER  
ALS Vial : 22 Sample Multiplier: 1

Instrument :  
MSVOA\_U  
ClientSampleId :  
YATMODL

Quant Method : Z:\voasrv\HPCHEM1\MSVOA\_U\Method\SFAMUTR030922WMA.M  
Quant Title : TRACE VOA SFAM1.0

TIC Library : C:\Database\NIST20.L  
TIC Integration Parameters: LSCINT.P

No Library Search Compounds Detected

\*\*\*\*\*

Data Path : Z:\voasrv\HPCHEM1\MSVOA\_U\Data\VU031022\  
Data File : VU047472.D  
Acq On : 10 Mar 2022 20:47  
Operator : SY/MD  
Sample : N1861-06DL 5X  
Misc : 25.0mL/MSVOA\_U/WATER  
ALS Vial : 22 Sample Multiplier: 1

Instrument :  
MSVOA\_U  
ClientSampleId :  
YATMODL

Quant Method : Z:\voasrv\HPCHEM1\MSVOA\_U\Method\SFAMUTR030922WMA.M  
Quant Title : TRACE VOA SFAM1.0

TIC Library : C:\Database\NIST0.L  
TIC Integration Parameters: LSCINT.P

TIC Top Hit name	RT	EstConc	Units	Response	--Internal Standard--			
					#	RT	Resp	Conc

---