

Data Path : Z:\voasrv\HPCHEM1\MSVOA_U\Data\VU031124\
 Data File : VU058040.D
 Acq On : 11 Mar 2024 14:04
 Operator : MD/SY
 Sample : P1715-05 25X
 Misc : 25.0mL/MSVOA_U/WATER
 ALS Vial : 13 Sample Multiplier: 1

Instrument :
 MSVOA_U
 ClientSampleId :
 BGQN5

Integration Parameters: rteint.p
 Integrator: RTE
 Smoothing : ON Filtering: 5
 Sampling : 1 Min Area: 3 % of largest Peak
 Start Thrs: 0.1 Max Peaks: 100
 Stop Thrs : 0 Peak Location: TOP

If leading or trailing edge < 100 prefer < Baseline drop else tangent >
 Peak separation: 5

Method : Z:\voasrv\HPCHEM1\MSVOA_U\Method\SFAMUTR022924WMA.M
 Title : TRACE VOA SFAM1.0

Signal : TIC: VU058040.D\data.ms

peak #	R.T. min	first scan	max scan	last scan	PK TY	peak height	corr. area	corr. % max.	% of total
1	2.560	382	395	406	rBV2	96192	165057	1.28%	0.820%
2	4.653	1022	1046	1074	rBV2	498848	1301742	10.10%	6.465%
3	5.052	1154	1170	1196	rBV2	98020	241746	1.88%	1.201%
4	5.717	1355	1377	1406	rBV2	187812	495974	3.85%	2.463%
5	6.242	1527	1540	1563	rBV	179884	348189	2.70%	1.729%
6	6.534	1616	1631	1666	rBV	1235008	2343251	18.18%	11.638%
7	6.682	1666	1677	1698	rVB	117895	237197	1.84%	1.178%
8	7.891	2038	2053	2070	rBV	224833	399613	3.10%	1.985%
9	8.547	2241	2257	2274	rBV	7694712	12888028	100.00%	64.008%
10	8.627	2274	2282	2326	rVB2	236306	557719	4.33%	2.770%
11	9.412	2513	2526	2550	rBV	247333	427981	3.32%	2.126%
12	11.807	3260	3271	3293	rBV	240495	397543	3.08%	1.974%
13	12.190	3375	3390	3408	rBV	194365	330958	2.57%	1.644%

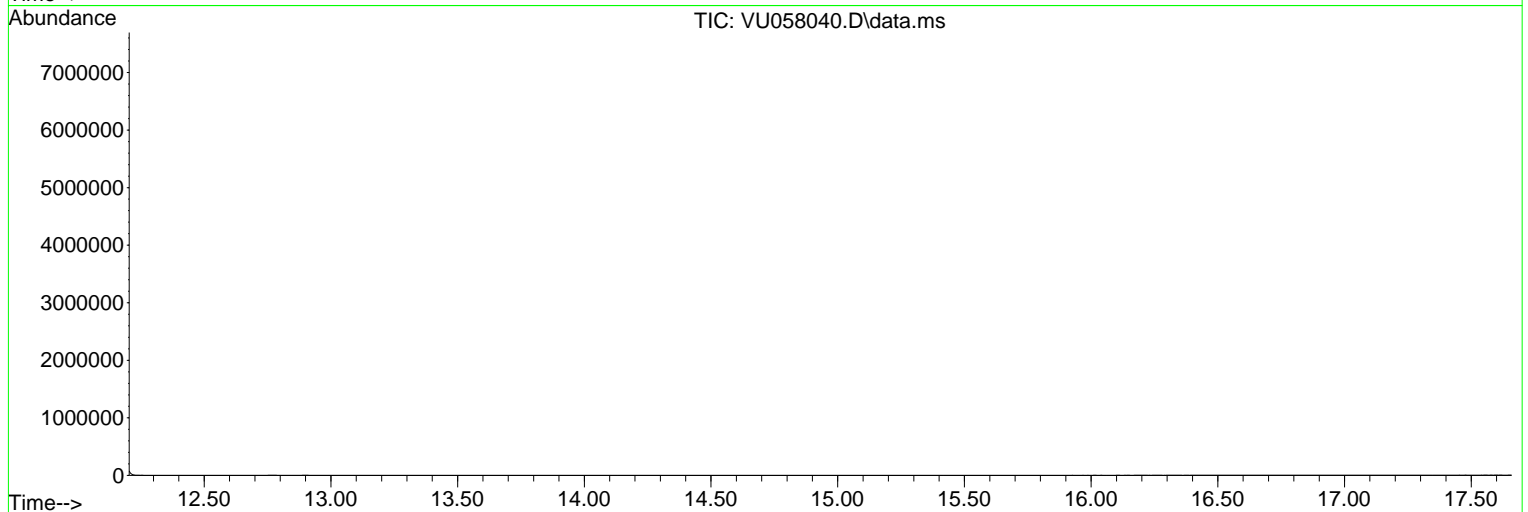
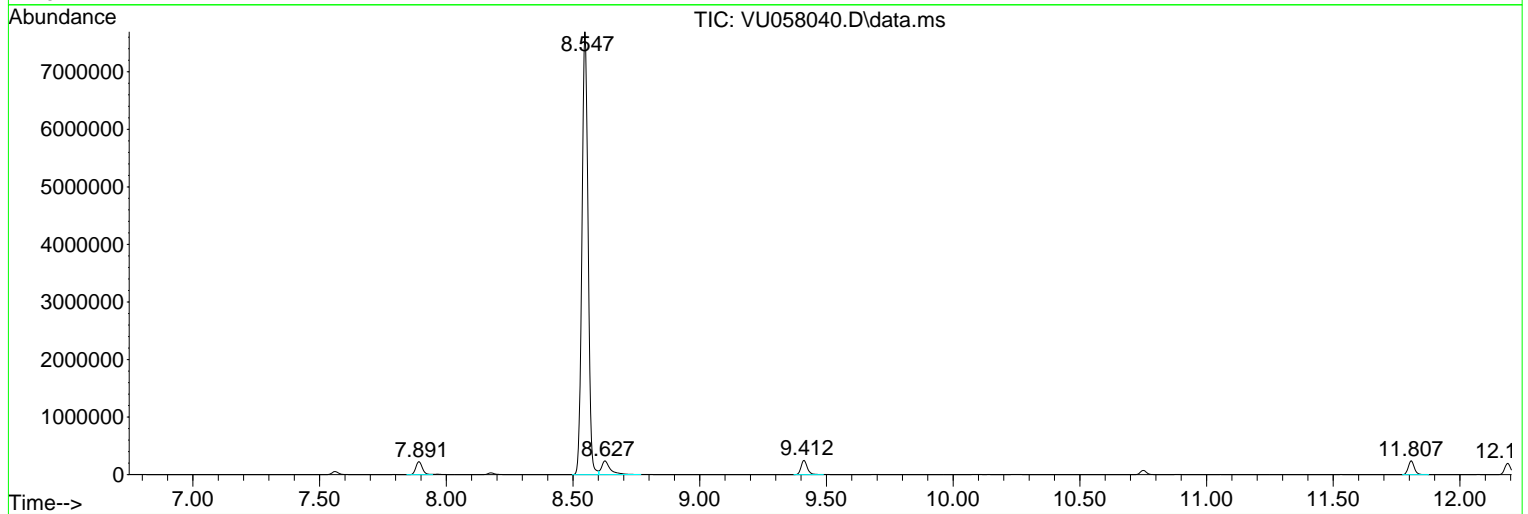
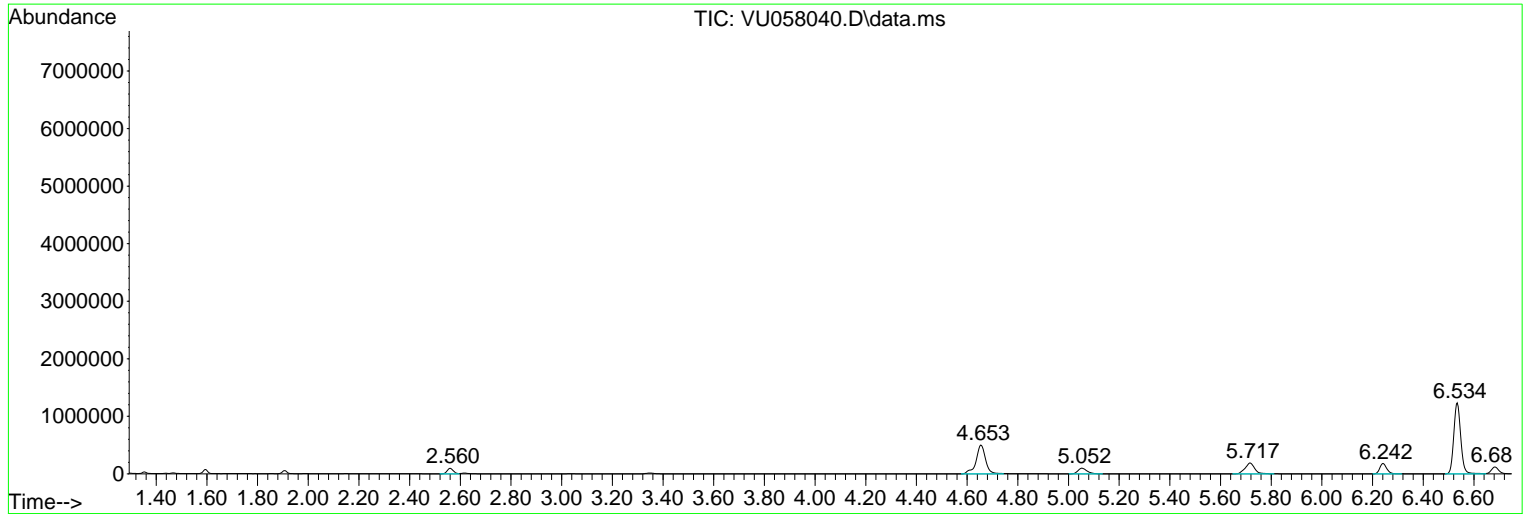
Sum of corrected areas: 20134998

Data Path : Z:\voasrv\HPCHEM1\MSVOA_U\Data\VU031124\
 Data File : VU058040.D
 Acq On : 11 Mar 2024 14:04
 Operator : MD/SY
 Sample : P1715-05 25X
 Misc : 25.0mL/MSVOA_U/WATER
 ALS Vial : 13 Sample Multiplier: 1

Instrument :
 MSVOA_U
 ClientSampleId :
 BGQN5

Quant Method : Z:\voasrv\HPCHEM1\MSVOA_U\Method\SFAMUTR022924WMA.M
 Quant Title : TRACE VOA SFAM1.0

TIC Library : C:\Database\NIST20.L
 TIC Integration Parameters: LSCINT.P



Library Search Compound Report

Data Path : Z:\voasrv\HPCHEM1\MSVOA_U\Data\VU031124\
Data File : VU058040.D
Acq On : 11 Mar 2024 14:04
Operator : MD/SY
Sample : P1715-05 25X
Misc : 25.0mL/MSVOA_U/WATER
ALS Vial : 13 Sample Multiplier: 1

Instrument :
MSVOA_U
ClientSampleId :
BGQN5

Quant Method : Z:\voasrv\HPCHEM1\MSVOA_U\Method\SFAMUTR022924WMA.M
Quant Title : TRACE VOA SFAM1.0

TIC Library : C:\Database\NIST20.L
TIC Integration Parameters: LSCINT.P

No Library Search Compounds Detected

Data Path : Z:\voasrv\HPCHEM1\MSVOA_U\Data\VU031124\
Data File : VU058040.D
Acq On : 11 Mar 2024 14:04
Operator : MD/SY
Sample : P1715-05 25X
Misc : 25.0mL/MSVOA_U/WATER
ALS Vial : 13 Sample Multiplier: 1

Instrument :
MSVOA_U
ClientSampleId :
BGQN5

Quant Method : Z:\voasrv\HPCHEM1\MSVOA_U\Method\SFAMUTR022924WMA.M
Quant Title : TRACE VOA SFAM1.0

TIC Library : C:\Database\NIST0.L
TIC Integration Parameters: LSCINT.P

TIC Top Hit name	RT	EstConc	Units	Response	--Internal Standard--		
					#	RT	Resp Conc
