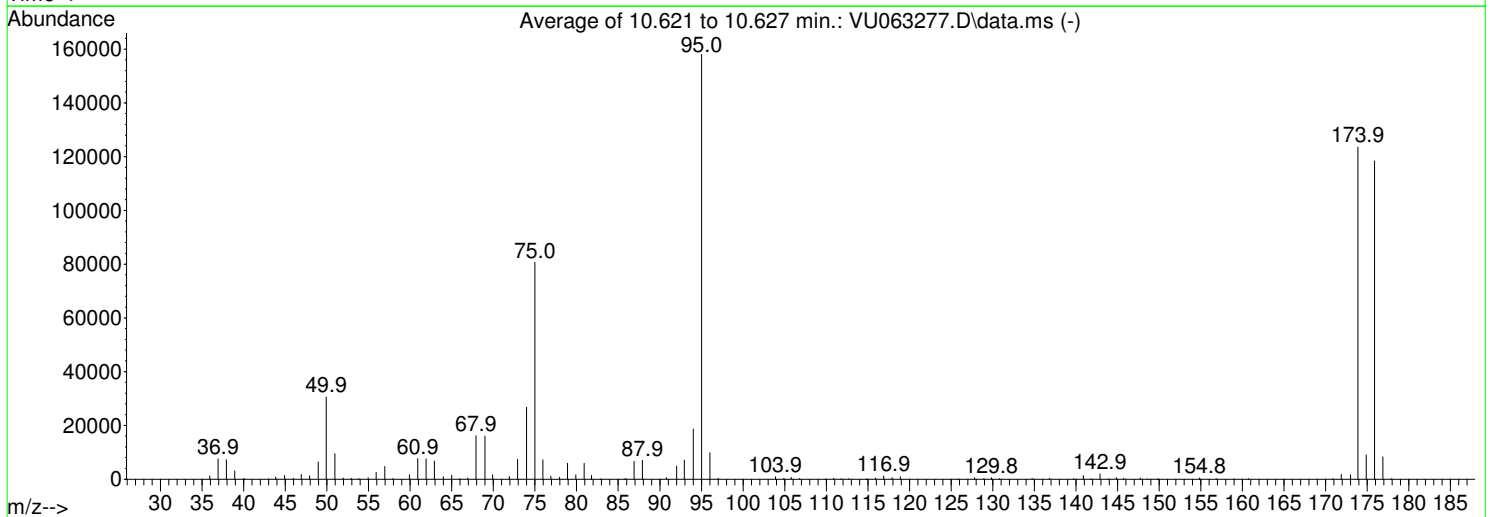
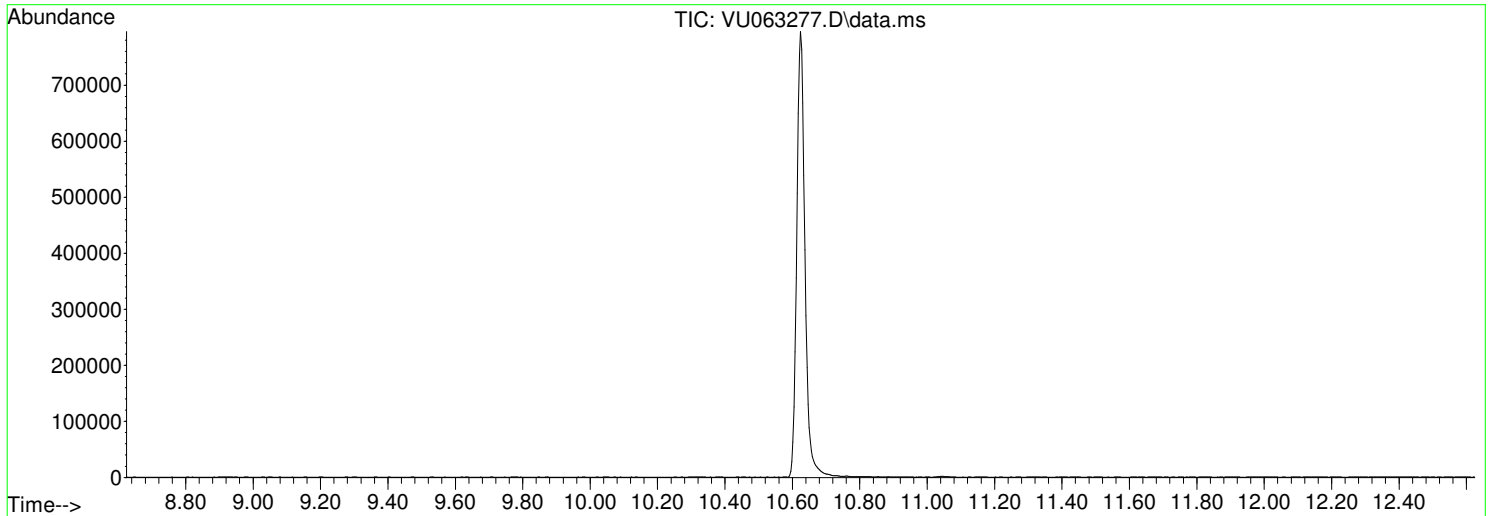


Data Path : D:\MassHunter\GCMS\1\data\VU031325\  
 Data File : VU063277.D  
 Acq On : 13 Mar 2025 09:47  
 Operator : MD/SY  
 Sample : BFB  
 Misc : 25.0mL/MSVOA\_U/WATER  
 ALS Vial : 1 Sample Multiplier: 1

Instrument :  
 MSVOA\_U  
 ClientSampleId :  
 BFB079

Integration File: rteint.p

Method : Z:\voasrv\HPCHEM1\MSVOA\_U\Method\SFAMUTR022125WMA.M  
 Title : TRACE VOA SFAM1.0  
 Last Update : Fri Mar 14 10:17:41 2025



AutoFind: Scans 2902, 2903, 2904; Background Corrected with Scan 2889

Target	Rel. to	Lower	Upper	Rel.	Raw	Result
Mass	Mass	Limit%	Limit%	Abn%	Abn	Pass/Fail
50	95	15	40	19.3	30531	PASS
75	95	30	80	51.1	80715	PASS
95	95	100	100	100.0	158080	PASS
96	95	5	9	6.2	9843	PASS
173	174	0.00	2	1.3	1600	PASS
174	95	50	120	78.2	123555	PASS
175	174	5	9	7.3	9048	PASS
176	174	95	101	95.8	118384	PASS
177	176	5	9	7.0	8299	PASS

m/z	Abundance
39.80	214.0
43.80	517.0

**Instrument :**  
MSVOA\_U  
**ClientSampleId :**  
BFB079

m/z	Abundance
35.90	1247.0
36.90	7683.0
37.90	7158.0
38.90	2949.0
39.80	264.0
40.00	265.0
43.00	129.0
43.90	1199.0
44.90	1391.0
45.90	343.0
46.90	1754.0
47.90	1127.0
48.90	6297.0
49.90	31008.0
51.00	9021.0
51.90	389.0
52.90	259.0
53.80	113.0
55.00	510.0
55.90	2738.0
56.90	4597.0
57.90	226.0
59.90	1548.0
60.90	7362.0
61.90	7774.0
62.90	6622.0
64.00	892.0
65.00	1375.0
66.00	143.0
66.90	384.0
67.90	16226.0
69.00	16226.0
69.90	1498.0
71.90	950.0
72.90	7295.0
74.00	26440.0
75.00	79240.0
75.90	7168.0
76.90	1004.0
77.90	594.0
78.90	5707.0
79.90	1616.0
80.90	5909.0
81.80	1415.0
85.70	166.0
86.90	6547.0
87.90	6674.0
90.80	547.0
92.00	4613.0
92.90	6945.0
94.00	18272.0
95.00	154880.0
96.00	9825.0
97.00	346.0
103.90	932.0
104.90	285.0
105.80	624.0
106.80	209.0
110.90	260.0
111.80	131.0
112.70	150.0
114.80	154.0
115.90	458.0
116.90	1033.0
117.90	592.0
118.90	967.0
125.80	107.0
127.80	489.0
128.90	197.0
129.80	555.0
130.80	174.0
134.80	224.0
136.80	339.0
139.80	181.0
140.90	1377.0
141.80	230.0
142.90	1859.0
143.90	104.0
144.80	585.0
145.80	284.0
147.80	420.0
149.90	152.0
154.90	446.0
156.80	189.0
159.00	108.0
160.70	139.0
170.90	226.0
171.90	1752.0
173.00	1511.0
173.90	118240.0
174.90	9103.0
175.90	114496.0

Instrument :  
MSVOA\_U  
ClientSampleId :  
BFB079

176.90  
177.90

8120.0  
236.0

**Instrument :**

MSVOA\_U

**ClientSampleId :**

BFB079

m/z	Abundance
35.90	1218.0
36.90	7886.0
37.90	7371.0
38.90	3058.0
40.10	265.0
43.00	140.0
43.90	1326.0
44.90	1433.0
45.90	335.0
46.90	1767.0
47.90	1265.0
48.90	6548.0
49.90	31432.0
50.90	9824.0
51.90	415.0
52.90	249.0
53.90	146.0
55.00	553.0
55.90	2681.0
57.00	4828.0
57.90	223.0
59.90	1593.0
60.90	7950.0
61.90	7724.0
62.90	6996.0
64.00	960.0
65.00	1528.0
66.00	166.0
66.90	397.0
67.90	16784.0
69.00	16592.0
69.90	1687.0
71.90	1144.0
72.90	7455.0
74.00	27496.0
75.00	83168.0
75.90	7573.0
76.90	1165.0
77.90	662.0
78.90	6066.0
79.90	1624.0
80.90	6111.0
81.80	1390.0
82.80	119.0
85.90	218.0
86.90	6770.0
87.90	7183.0
90.80	555.0
92.00	5048.0
93.00	7358.0
94.00	19240.0
95.00	163392.0
96.00	10237.0
97.00	361.0
103.90	922.0
104.90	302.0
105.80	672.0
106.80	201.0
110.80	307.0
111.80	157.0
112.70	166.0
114.80	153.0
115.90	461.0
116.90	1139.0
117.90	572.0
118.90	1002.0
125.80	118.0
127.80	508.0
129.00	199.0
129.90	603.0
130.80	221.0
134.80	255.0
136.80	387.0
139.80	202.0
140.90	1448.0
141.80	247.0
142.90	1983.0
144.90	625.0
145.70	269.0
147.80	393.0
148.60	101.0
149.80	163.0
154.80	477.0
156.80	227.0
159.00	118.0
160.80	194.0
170.80	177.0
171.90	1783.0
173.00	1694.0
173.90	127392.0
174.90	9341.0
175.90	122064.0

Instrument :  
MSVOA\_U  
ClientSampleId :  
BFB079

176.90  
177.90

8723.0  
197.0

**Instrument :**

MSVOA\_U

**ClientSampleId :**

BFB079

m/z	Abundance
35.90	1212.0
36.90	7278.0
37.90	6941.0
38.90	2973.0
39.90	252.0
43.00	103.0
43.90	1384.0
44.90	1356.0
46.00	286.0
46.90	1653.0
47.90	1216.0
49.00	6251.0
49.90	29152.0
50.90	9635.0
52.00	376.0
52.90	236.0
53.90	144.0
54.90	510.0
55.90	2315.0
57.00	4772.0
57.90	190.0
59.90	1548.0
60.90	7890.0
61.90	7198.0
62.90	6619.0
64.00	950.0
65.00	1560.0
65.90	161.0
66.90	426.0
67.90	15405.0
69.00	15252.0
69.90	1574.0
71.90	1103.0
72.90	7118.0
74.00	26304.0
75.00	79736.0
76.00	7049.0
76.90	1144.0
78.00	763.0
78.90	5972.0
79.90	1495.0
80.90	5834.0
81.80	1193.0
82.90	160.0
85.90	226.0
86.90	6460.0
87.90	6918.0
90.80	600.0
92.00	4910.0
93.00	7032.0
94.00	18344.0
95.00	155968.0
96.00	9466.0
97.00	294.0
103.90	707.0
104.90	279.0
105.80	707.0
106.80	145.0
109.90	105.0
110.80	298.0
111.80	123.0
112.70	140.0
114.90	189.0
115.90	431.0
116.90	1130.0
117.90	490.0
118.90	901.0
127.80	479.0
129.00	236.0
129.90	597.0
130.80	246.0
134.70	289.0
136.80	363.0
139.70	168.0
140.90	1431.0
141.80	235.0
142.90	1955.0
144.90	573.0
145.70	202.0
147.70	411.0
149.80	134.0
154.80	459.0
156.90	237.0
158.90	119.0
160.80	248.0
170.80	143.0
171.90	1661.0
173.00	1594.0
173.90	125032.0
174.90	8699.0
175.90	118592.0
176.90	8055.0

Instrument :  
MSVOA\_U  
ClientSampleId :  
BFB079

177.90

139.0

**Instrument :**

MSVOA\_U

**ClientSampleId :**

BFB079