

Data Path : Z:\voasrv\HPCHEM1\MSVOA_U\Data\VU031622\
 Data File : VU047586.D
 Acq On : 16 Mar 2022 12:02
 Operator : SY/MD
 Sample : VU0316WBL01
 Misc : 25.0mL/MSVOA_U/WATER
 ALS Vial : 3 Sample Multiplier: 1

Instrument :
 MSVOA_U
 ClientSampleId :
 VBLK082

Quant Time: Mar 17 00:51:09 2022
 Quant Method : Z:\voasrv\HPCHEM1\MSVOA_U\Method\SFAMUTR031422WMA.M
 Quant Title : TRACE VOA SFAM1.0
 QLast Update : Thu Mar 17 00:50:30 2022
 Response via : Initial Calibration

Compound	R.T.	QIon	Response	Conc	Units	Dev(Min)

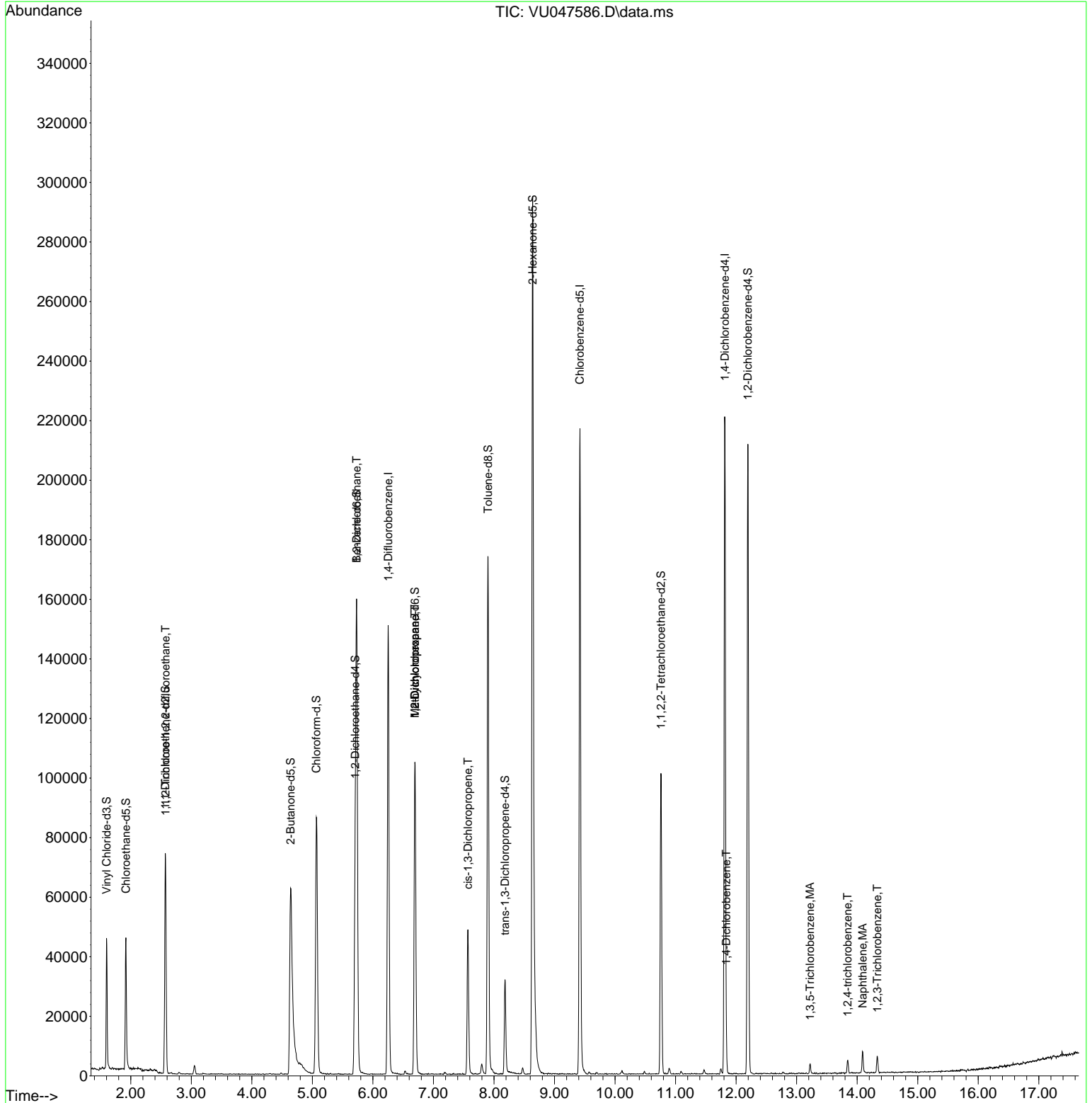
Internal Standards						
1) 1,4-Difluorobenzene	6.253	114	128609	5.000	ug/L	0.00
28) Chlorobenzene-d5	9.420	117	127096	5.000	ug/L	0.00
58) 1,4-Dichlorobenzene-d4	11.815	152	63824	5.000	ug/L	0.00
System Monitoring Compounds						
4) Vinyl Chloride-d3	1.600	65	31080	3.695	ug/L	0.00
Spiked Amount	5.000	Range 40 - 130	Recovery	=	74.000%	
7) Chloroethane-d5	1.919	69	33839	4.433	ug/L	0.00
Spiked Amount	5.000	Range 65 - 130	Recovery	=	88.600%	
11) 1,1-Dichloroethene-d2	2.571	65	13741	3.484	ug/L	0.00
Spiked Amount	5.000	Range 60 - 125	Recovery	=	69.600%	
20) 2-Butanone-d5	4.642	46	130957	54.112	ug/L	0.00
Spiked Amount	50.000	Range 40 - 130	Recovery	=	108.220%	
24) Chloroform-d	5.067	84	81672	4.422	ug/L	0.00
Spiked Amount	5.000	Range 70 - 125	Recovery	=	88.400%	
26) 1,2-Dichloroethane-d4	5.706	65	46191	4.616	ug/L	0.00
Spiked Amount	5.000	Range 70 - 130	Recovery	=	92.400%	
32) Benzene-d6	5.732	84	150837	4.077	ug/L	0.00
Spiked Amount	5.000	Range 70 - 125	Recovery	=	81.600%	
36) 1,2-Dichloropropane-d6	6.694	67	52094	4.477	ug/L	0.00
Spiked Amount	5.000	Range 60 - 140	Recovery	=	89.600%	
41) Toluene-d8	7.902	98	123477	3.559	ug/L	0.00
Spiked Amount	5.000	Range 70 - 130	Recovery	=	71.200%	
43) trans-1,3-Dichloroprop...	8.182	79	18947	3.873	ug/L	0.00
Spiked Amount	5.000	Range 55 - 130	Recovery	=	77.400%	
46) 2-Hexanone-d5	8.639	63	112358	44.312	ug/L	0.00
Spiked Amount	50.000	Range 45 - 130	Recovery	=	88.620%	
56) 1,1,2,2-Tetrachloroeth...	10.758	84	50564	4.352	ug/L	0.00
Spiked Amount	5.000	Range 65 - 120	Recovery	=	87.000%	
66) 1,2-Dichlorobenzene-d4	12.195	152	58421	4.380	ug/L	0.00
Spiked Amount	5.000	Range 80 - 120	Recovery	=	87.600%	
Target Compounds						
						Qvalue
10) 1,1,2-Trichloro-1,2,2-...	2.575	101	348	0.053	ug/L #	18
27) 1,2-Dichloroethane	5.732	62	874	0.103	ug/L #	74
35) Methylcyclohexane	6.694	83	12058	1.101	ug/L #	20
37) 1,2-Dichloropropane	6.694	63	5404	0.734	ug/L #	87
39) cis-1,3-Dichloropropene	7.571	75	1196	0.105	ug/L	83
65) 1,4-Dichlorobenzene	11.838	146	1218	0.074	ug/L	94
69) 1,3,5-Trichlorobenzene	13.221	180	1497	0.110	ug/L	90
70) 1,2,4-trichlorobenzene	13.841	180	1959	0.164	ug/L	98
71) Naphthalene	14.092	128	6388	0.288	ug/L	97
72) 1,2,3-Trichlorobenzene	14.333	180	2339	0.204	ug/L	98

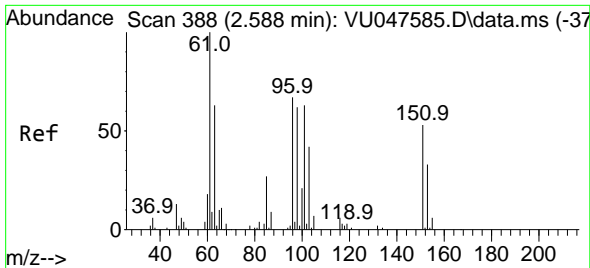
(#) = qualifier out of range (m) = manual integration (+) = signals summed

Data Path : Z:\voasrv\HPCHEM1\MSVOA_U\Data\VU031622\
 Data File : VU047586.D
 Acq On : 16 Mar 2022 12:02
 Operator : SY/MD
 Sample : VU0316WBL01
 Misc : 25.0mL/MSVOA_U/WATER
 ALS Vial : 3 Sample Multiplier: 1

Instrument :
 MSVOA_U
 ClientSampleId :
 VBLK082

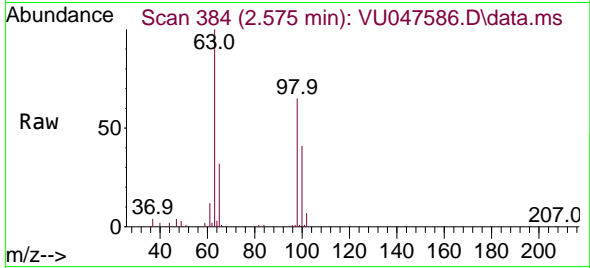
Quant Time: Mar 17 00:51:09 2022
 Quant Method : Z:\voasrv\HPCHEM1\MSVOA_U\Method\SFAMUTR031422WMA.M
 Quant Title : TRACE VOA SFAM1.0
 QLast Update : Thu Mar 17 00:50:30 2022
 Response via : Initial Calibration





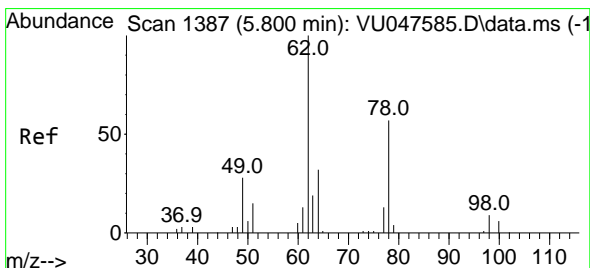
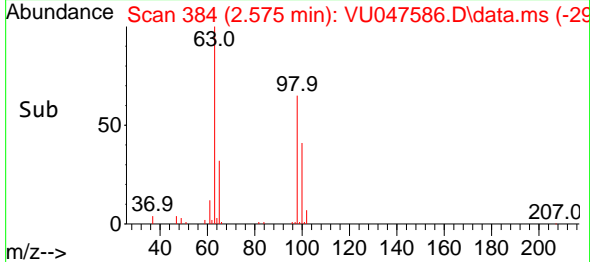
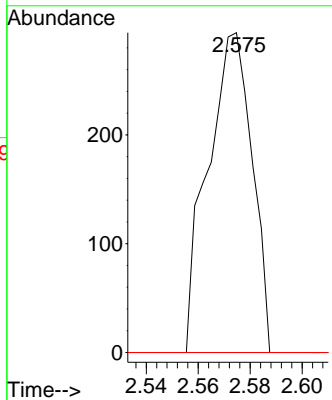
#10
 1,1,2-Trichloro-1,2,2-trifluoroethane
 Concen: 0.053 ug/L
 RT: 2.575 min Scan# 31
 Delta R.T. -0.013 min
 Lab File: VU047586.D
 Acq: 16 Mar 2022 12:02

Instrument :
 MSVOA_U
 ClientSampleId :
 VBLK082



Tgt Ion: 101 Resp: 348

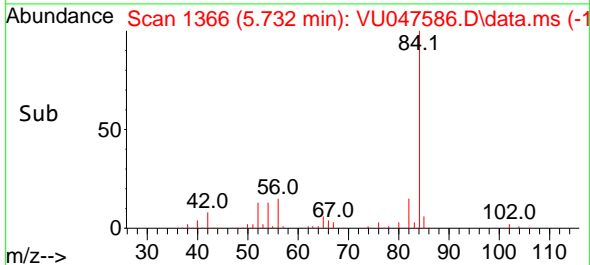
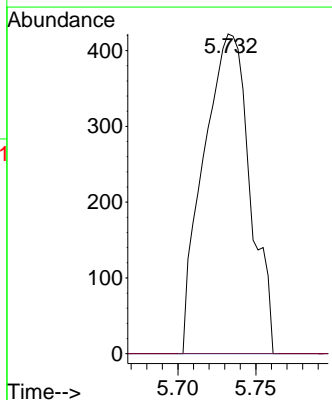
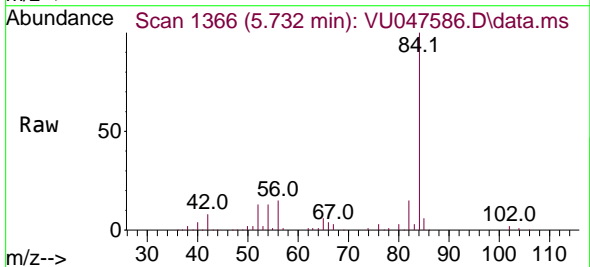
Ion	Ratio	Lower	Upper
101	100		
85	0.0	34.0	51.0#
151	0.0	63.8	95.6#

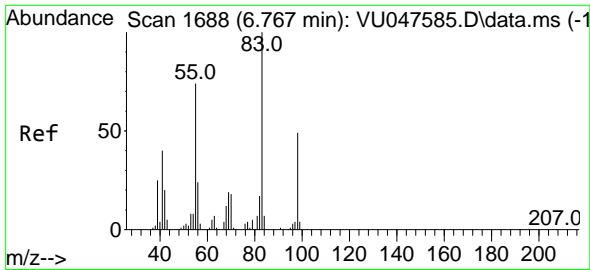


#27
 1,2-Dichloroethane
 Concen: 0.103 ug/L
 RT: 5.732 min Scan# 1366
 Delta R.T. -0.067 min
 Lab File: VU047586.D
 Acq: 16 Mar 2022 12:02

Tgt Ion: 62 Resp: 874

Ion	Ratio	Lower	Upper
62	100		
98	0.0	7.7	11.5#

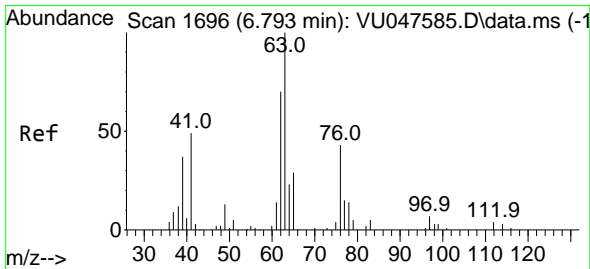
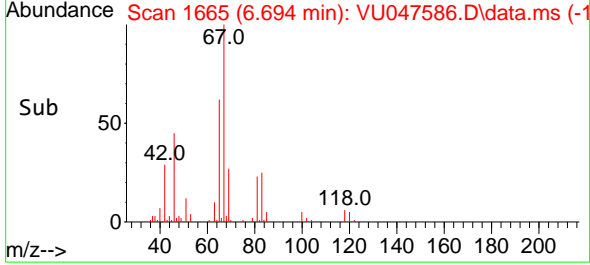
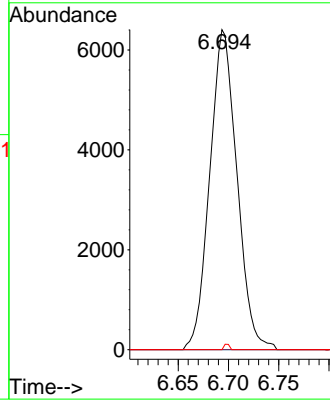
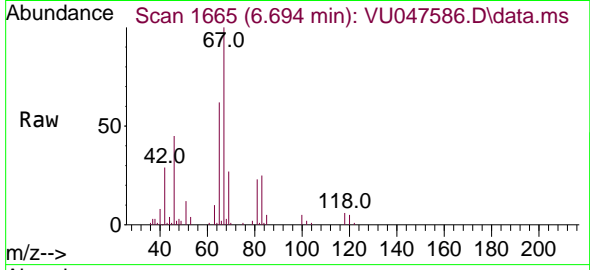




#35
 Methylcyclohexane
 Concen: 1.101 ug/L
 RT: 6.694 min Scan# 1665
 Delta R.T. -0.074 min
 Lab File: VU047586.D
 Acq: 16 Mar 2022 12:02

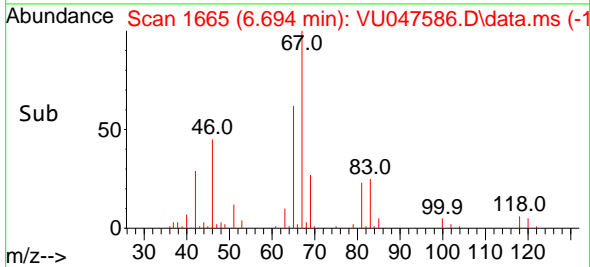
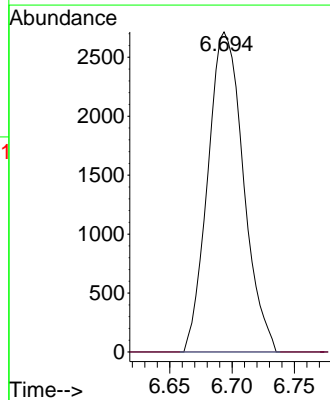
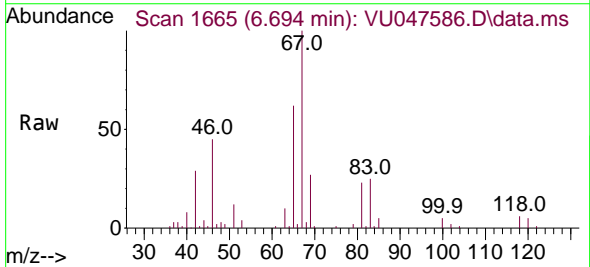
Instrument : MSVOA_U
 ClientSampleId : VBLK082

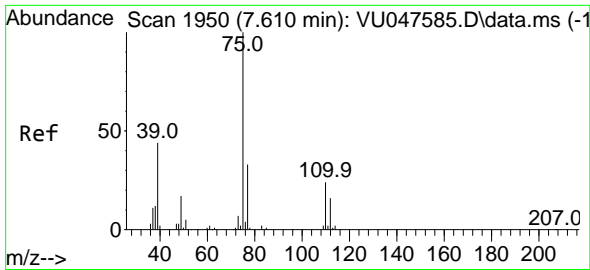
Tgt Ion	Resp	Lower	Upper
83	12058		
55	0.0	57.3	85.9#
98	0.3	37.5	56.3#



#37
 1,2-Dichloropropane
 Concen: 0.734 ug/L
 RT: 6.694 min Scan# 1665
 Delta R.T. -0.100 min
 Lab File: VU047586.D
 Acq: 16 Mar 2022 12:02

Tgt Ion	Resp	Lower	Upper
63	5404		
112	0.0	3.4	5.0#

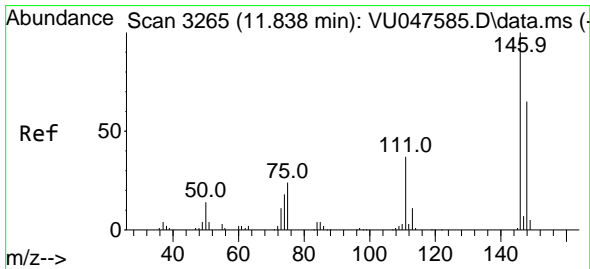
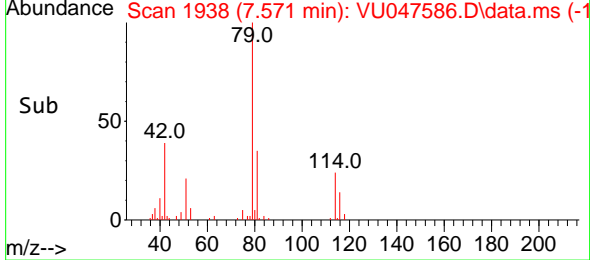
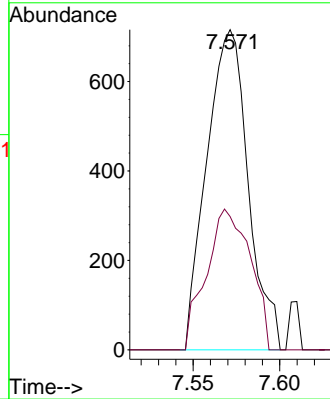
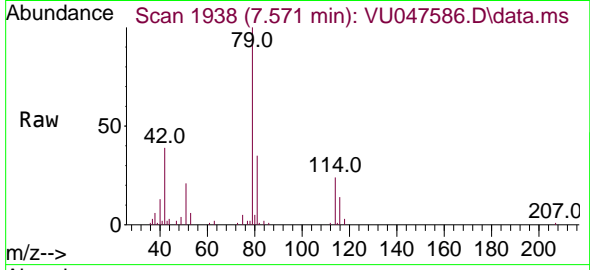




#39
 cis-1,3-Dichloropropene
 Concen: 0.105 ug/L
 RT: 7.571 min Scan# 1950
 Delta R.T. -0.039 min
 Lab File: VU047586.D
 Acq: 16 Mar 2022 12:02

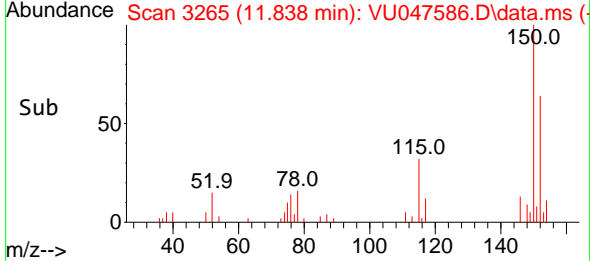
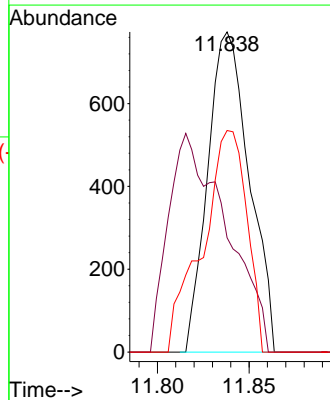
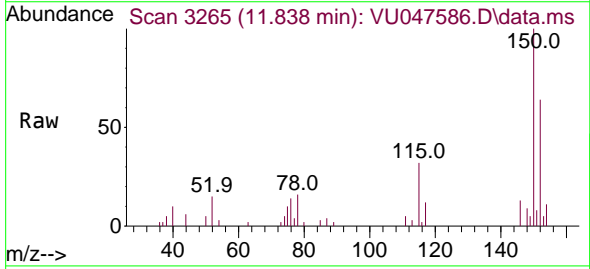
Instrument : MSVOA_U
 ClientSampleId : VBLK082

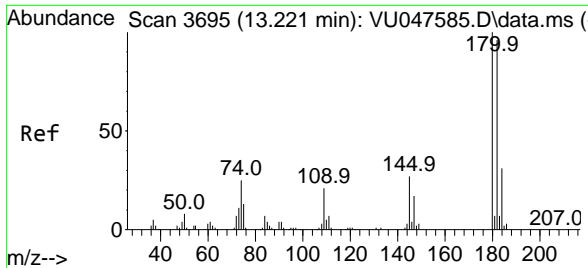
Tgt Ion: 75 Resp: 1196
 Ion Ratio Lower Upper
 75 100
 77 41.6 22.6 42.0



#65
 1,4-Dichlorobenzene
 Concen: 0.074 ug/L
 RT: 11.838 min Scan# 3265
 Delta R.T. 0.000 min
 Lab File: VU047586.D
 Acq: 16 Mar 2022 12:02

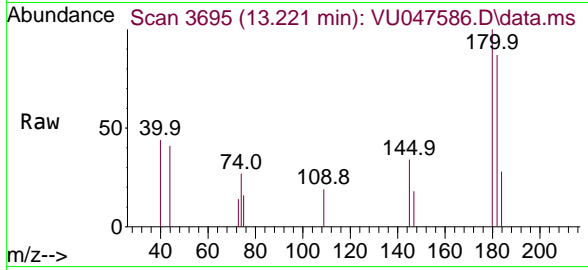
Tgt Ion:146 Resp: 1218
 Ion Ratio Lower Upper
 146 100
 111 35.7 26.2 48.8
 148 69.2 44.3 82.3





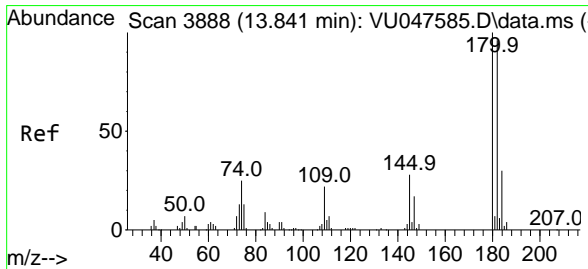
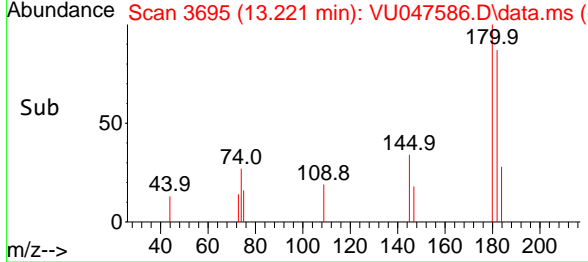
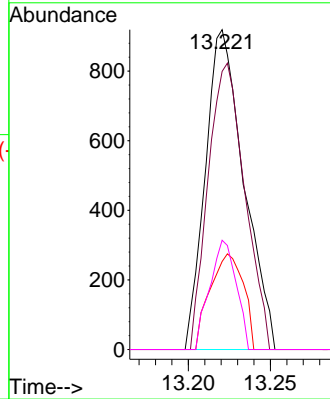
#69
 1,3,5-Trichlorobenzene
 Concen: 0.110 ug/L
 RT: 13.221 min Scan# 3695
 Delta R.T. 0.000 min
 Lab File: VU047586.D
 Acq: 16 Mar 2022 12:02

Instrument :
 MSVOA_U
 ClientSampleId :
 VBLK082

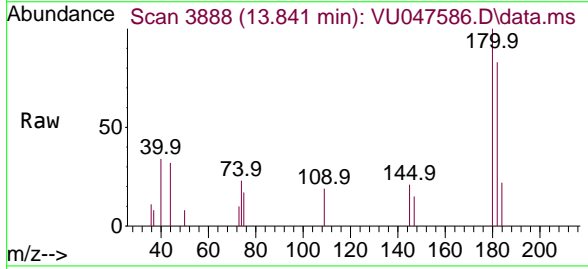


Tgt Ion:180 Resp: 1497

Ion	Ratio	Lower	Upper
180	100		
182	85.1	77.3	115.9
184	25.9	24.3	36.5
145	23.5	21.8	32.6

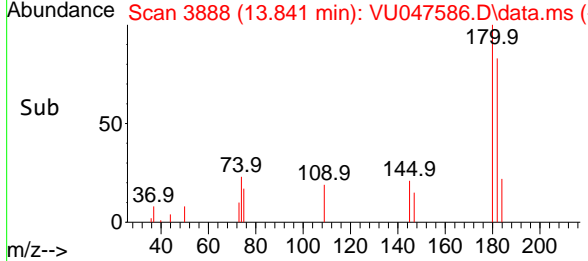
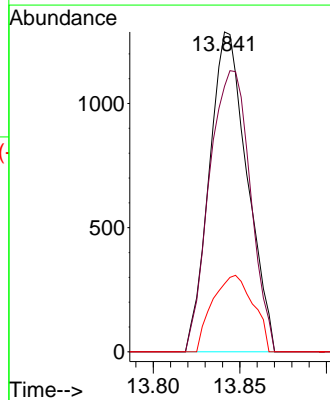


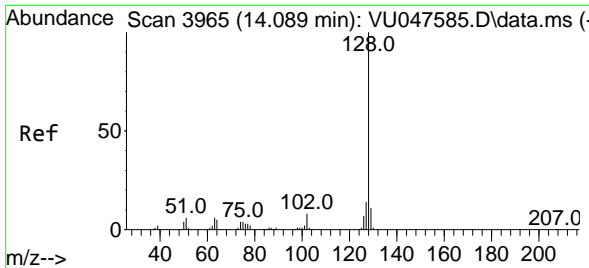
#70
 1,2,4-trichlorobenzene
 Concen: 0.164 ug/L
 RT: 13.841 min Scan# 3888
 Delta R.T. 0.000 min
 Lab File: VU047586.D
 Acq: 16 Mar 2022 12:02



Tgt Ion:180 Resp: 1959

Ion	Ratio	Lower	Upper
180	100		
182	94.9	76.6	114.8
145	25.8	22.5	33.7



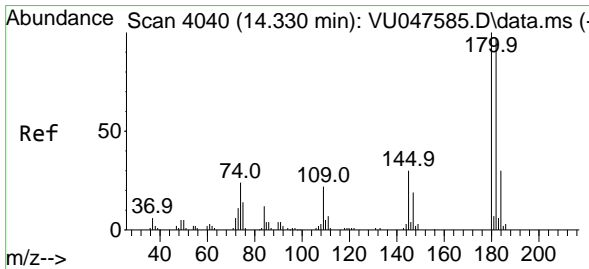
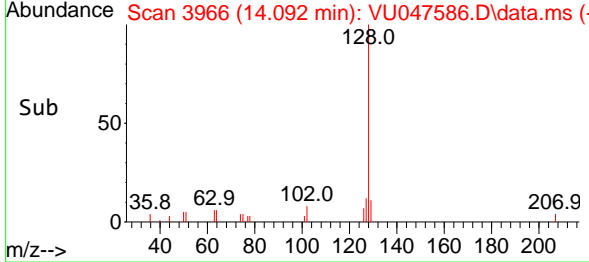
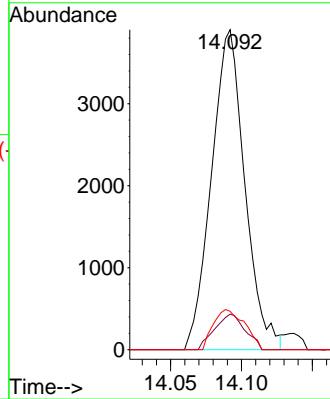
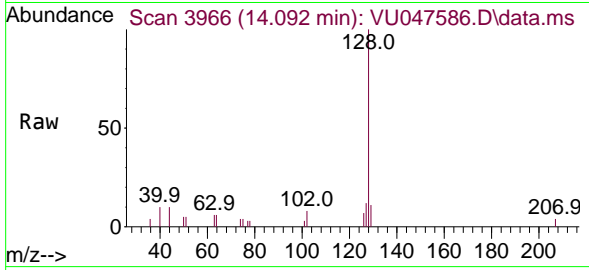


#71
 Naphthalene
 Concen: 0.288 ug/L
 RT: 14.092 min Scan# 3966
 Delta R.T. 0.003 min
 Lab File: VU047586.D
 Acq: 16 Mar 2022 12:02

Instrument : MSVOA_U
 ClientSampleId : VBLK082

Tgt Ion:128 Resp: 6388

Ion	Ratio	Lower	Upper
128	100		
129	10.1	8.7	13.1
127	11.8	10.4	15.6



#72
 1,2,3-Trichlorobenzene
 Concen: 0.204 ug/L
 RT: 14.333 min Scan# 4041
 Delta R.T. 0.003 min
 Lab File: VU047586.D
 Acq: 16 Mar 2022 12:02

Tgt Ion:180 Resp: 2339

Ion	Ratio	Lower	Upper
180	100		
182	97.7	77.8	116.8
145	25.0	23.7	35.5

