

Data Path : Z:\VOASRV\HPCHEM1\MSVOA U\DATA\VU032820\
 Data File : VU037420.D
 Acq On : 28 Mar 2020 16:32
 Operator : JC/MD
 Sample : L2002-02
 Misc : 25.0mL/MSVOA U/WATER
 ALS Vial : 1 Sample Multiplier: 1

Instrument :
 MSVOA_U
 ClientSampleId :
 GAWG6

Quant Time: Mar 30 01:04:16 2020
 Quant Method : Z:\VOASRV\HPCHEM1\MSVOA_U\METHOD\SOMUTR032820WMA.M
 Quant Title : TRACE VOA SOM01.0
 QLast Update : Mon Mar 30 00:15:54 2020
 Response via : Initial Calibration

Internal Standards	R.T.	QIon	Response	Conc	Units	Dev(Min)
1) 1,4-Difluorobenzene	6.28	114	123789	5.00	ug/L	0.00
28) Chlorobenzene-d5	9.44	117	117152	5.00	ug/L	0.00
60) 1,4-Dichlorobenzene-d4	11.83	152	59680	5.00	ug/L	0.00

System Monitoring Compounds

4) Vinyl Chloride-d3	1.61	65	39743	4.35	ug/L	0.00
Spiked Amount	5.000	Range	40 - 130	Recovery	=	87.00%
7) Chloroethane-d5	1.93	69	32077	4.69	ug/L	0.00
Spiked Amount	5.000	Range	65 - 130	Recovery	=	93.80%
11) 1,1-Dichloroethene-d2	2.59	63	61903	3.47	ug/L	0.00
Spiked Amount	5.000	Range	60 - 125	Recovery	=	69.40%
20) 2-Butanone-d5	4.66	46	113526	45.58	ug/L	-0.02
Spiked Amount	50.000	Range	40 - 130	Recovery	=	91.16%
24) Chloroform-d	5.10	84	77838	4.31	ug/L	0.00
Spiked Amount	5.000	Range	70 - 125	Recovery	=	86.20%
26) 1,2-Dichloroethane-d4	5.74	65	44074	4.44	ug/L	0.00
Spiked Amount	5.000	Range	70 - 130	Recovery	=	88.80%
32) Benzene-d6	5.76	84	154539	4.57	ug/L	0.00
Spiked Amount	5.000	Range	70 - 125	Recovery	=	91.40%
36) 1,2-Dichloropropane-d6	6.72	67	50643	4.52	ug/L	0.00
Spiked Amount	5.000	Range	60 - 140	Recovery	=	90.40%
41) Toluene-d8	7.92	98	145630	4.54	ug/L	0.00
Spiked Amount	5.000	Range	70 - 130	Recovery	=	90.80%
43) trans-1,3-Dichloropropene-	8.20	79	23584	4.48	ug/L	0.00
Spiked Amount	5.000	Range	55 - 130	Recovery	=	89.60%
46) 2-Hexanone-d5	8.66	63	96654	46.15	ug/L	0.00
Spiked Amount	50.000	Range	45 - 130	Recovery	=	92.30%
57) 1,1,2,2-Tetrachloroethane-	10.77	84	41130	4.37	ug/L	0.00
Spiked Amount	5.000	Range	65 - 120	Recovery	=	87.40%
64) 1,2-Dichlorobenzene-d4	12.21	152	55113	4.69	ug/L	0.00
Spiked Amount	5.000	Range	80 - 120	Recovery	=	93.80%

Target Compounds

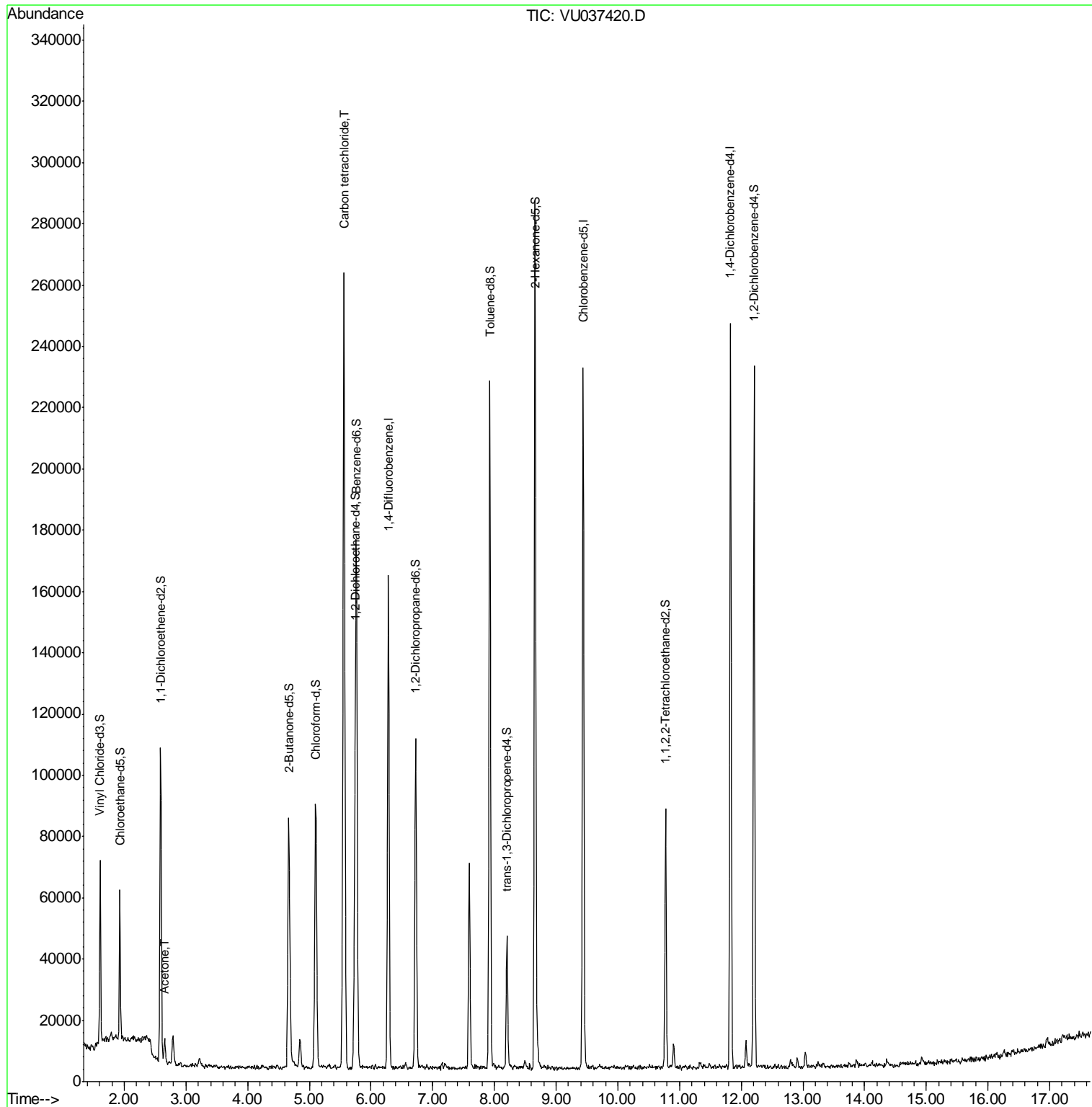
					Ovalue
13) Acetone	2.66	43	8708	6.085	ug/L 94
31) Carbon tetrachloride	5.56	117	170621	13.420	ug/L 100

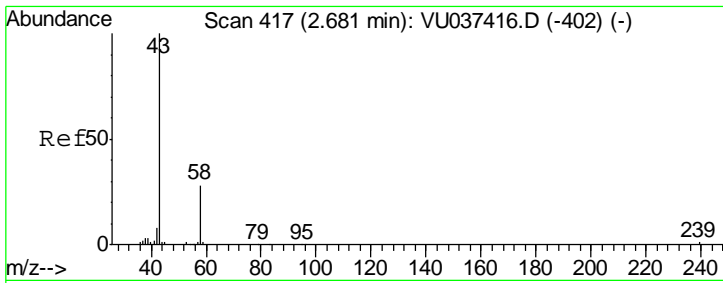
(#) = qualifier out of range (m) = manual integration (+) = signals summed

Data Path : Z:\VOASRV\HPCHEM1\MSVOA U\DATA\VU032820\
 Data File : VU037420.D
 Acq On : 28 Mar 2020 16:32
 Operator : JC/MD
 Sample : L2002-02
 Misc : 25.0mL/MSVOA U/WATER
 ALS Vial : 1 Sample Multiplier: 1

Instrument :
 MSVOA_U
 Client Sampled :
 GAWG6

Quant Time: Mar 30 01:04:16 2020
 Quant Method : Z:\VOASRV\HPCHEM1\MSVOA_U\METHOD\SOMUTR032820WMA.M
 Quant Title : TRACE VOA SOM01.0
 QLast Update : Mon Mar 30 00:15:54 2020
 Response via : Initial Calibration

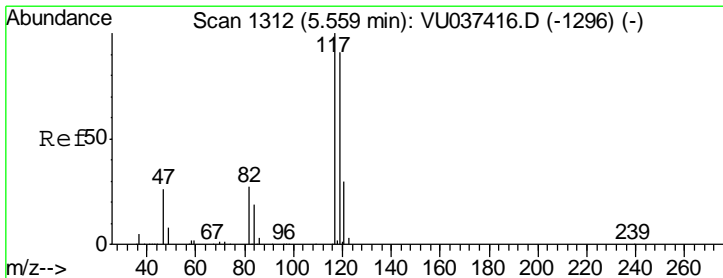
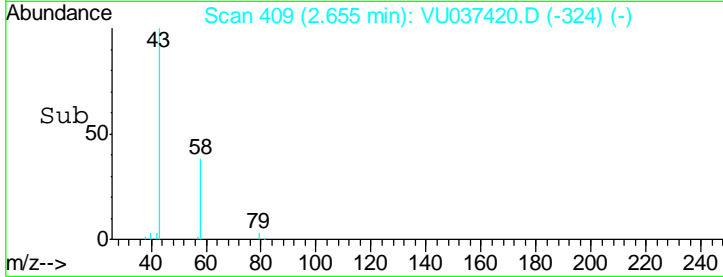
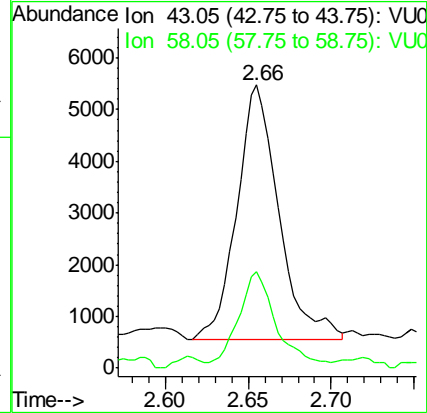
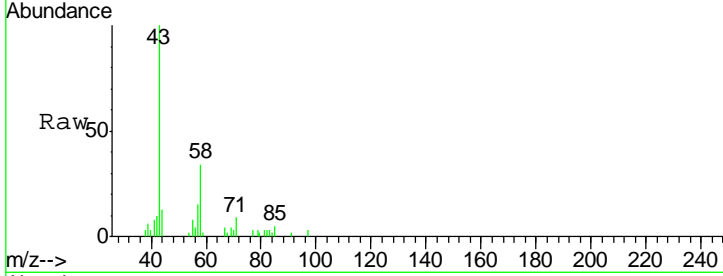




#13
 Acetone
 Concen: 6.085 ug/L
 RT: 2.66 min Scan# 409
 Delta R.T. -0.03 min
 Lab File: VU037420.D
 Acq: 28 Mar 2020 16:32

Instrument :
 MSVOA_U
 ClientSampled :
 GAWG6

Tgt Ion: 43 Resp: 8708
 Ion Ratio Lower Upper
 43 100
 58 29.4 0.0 66.0



#31
 Carbon tetrachloride
 Concen: 13.420 ug/L
 RT: 5.56 min Scan# 1313
 Delta R.T. 0.00 min
 Lab File: VU037420.D
 Acq: 28 Mar 2020 16:32

Tgt Ion: 117 Resp: 170621
 Ion Ratio Lower Upper
 117 100
 119 97.5 77.7 116.5

